

X-CHAIR

This is Not Your Grandfather's Office Chair!



ELEMAX

Cooling, Heat & Massage Chair

Contents

ELEMAX™	2
Ergonomics	3
Dynamic Variable Lumbar (DVL) Support	6
X ¹ -Task	7
X ² -MGMT	9
X ³ -MGMT	11
X ⁴ -EXEC	13
X-BASIC	15
X ⁵ -VISION	17
X ⁶ -WING	19
X-PROJECT	20
X-SIDE	21
X-STACK	21
X-YoYo	22
Textiles & Bases	23
X77 Massage Chair	25
X-Table	27
X-FlexTop	28
Accessories	28
Coming Soon	29
Warranty & Certifications	30
In the Media	31

ELEMAX

Introducing

An Office Cooling & Heat Massage Chair for Work and Home

Perfect for those that run hot and/or cold. The ELEMAX is designed to keep you cool or warm 365 days out of the year. All while bringing relaxing massage therapy to your current X-Chair. Easy to install and easily the most versatile and powerful tool to join you during the work day.



Cooling

ELEMAX is powered by dual fans to keep your body temperature cool and comfortable.



Heat

Relax your muscles with the fast warming technology of the ELEMAX.



Modes

There are two different massage mode settings on the ELEMAX - Constant and Variable. The Constant setting is a steady vibration pulse and the Variable setting is a rhythmic vibration.



Massage Intensity

The ELEMAX has two levels of massage intensity - Gentle and Powerful.

New X-Chair Products!



X-CHAIR

This is not your grandfather's office chair!

It's a motivator – a tool to make you more productive. It's an investment in your health – support to keep you comfortable while you work long hours. It's a work of art – a new aesthetic for your workspace. It's a symbol that you're serious about where you're at and where you're going but determined to have fun along the way. This is the X-Chair.

Key Ergonomic Features



Dynamic Variable Lumbar (DVL)[™] Support

The Dynamic Variable Lumbar (DVL) support is X-Chair's greatest ergonomic feat of all – one that needs no adjusting. The DVL Support intuitively adjusts itself to your body every time you move. Responding to your weight, height, position, and the amount of pressure you place on it, the DVL Support pivots with you, keeping you comfortable and supported even as you change positions throughout the day. Be free to keep your mind on your work, not your back.



Tilt Tension & Tilt Lock

We made a masterful office chair, you get to adjust it to suit your preferences. Adjust the tilt tension to change the amount of resistance you feel as you recline. Whether you like a little or a lot of resistance, X-Chair's got you covered. Lock the chair in a reclined position for those times you need to put your feet up.



Extensive Variable Recline

Extensive Variable Recline (EVR) is specific to the X¹ task chair. X¹ users will find that EVR provides a level of customizable comfort previously unimaginable.



SciFloat Infinite Recline

Created specifically for X-Chair, SciFloat Infinite Recline facilitates motion throughout your day. Movement increases circulation, concentration, and energy levels—everything you need to boost both comfort and productivity in your workspace. Wheels are no longer the only thing a good office chair needs to keep you moving.



Outfitting an entire office?

X-Chair's ergonomic design facilitates movement and improved circulation, which increases focus and productivity. Imagine what an entire office can accomplish in the X-Chair.



Adjustable Seat Height

You may be skeptical of our one-size-fits-all approach. It's true -- we don't know how tall you are but you certainly do. Easily adjust the seat height so your feet rest flat on the ground and your knees are positioned at a 90° angle.



Height-Adjustable Backrest

X-Chair's independently adjustable backrest lets you raise the Dynamic Variable Lumbar (DVL)TM support to fit the curve of your back. Bring the DVL support to a comfortable position and relax while it supports the natural shape of your spine.



Adjustable Seat Depth

At a proper seat depth, your lower back should be against the DVL support and you should be able to fit 2 to 3 fingers between the edge of your seat and the backs of your knees. An improper seat depth puts undue pressure on the veins and lymph nodes behind your knee, and often leads to poor circulation, leg cramps, or your legs falling asleep. This is all avoidable with the X-Chair's adjustable seat depth.



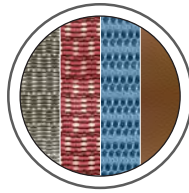
Adjustable Headrest Angle

Your head and neck do not stay in the same place all day, so neither should your headrest. Easily adjust the angle of X-Chair's headrest to find comfort no matter what position you want to sit in.



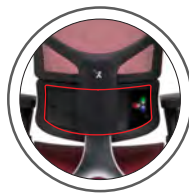
4-Dimensional Arms

4-Dimensional armrests adjust forward and back, side-to-side, up and down, and pivot to an angle. No one keeps their arms in the same position all day, and X-Chair is ready to move with you. Now available, new armrests with or without height locking adjustment.



6 Unique Textiles + NEW Brisa Soft-Touch

X¹ comes with Flex Mesh Technology, a breathable and durable mesh that is up to the task of supporting you all day. X² has K-Sport advanced performance material, which features a tighter weave for a softer feel. X³ has the Advanced Tensile Recovery Fabric, (ATR) that adds a springy soft feel. The X⁴ is covered in supple, ultra-comfortable top grain, premium leather, or Brisa soft-touch that looks as luxurious as it feels. Each fabric is available in your choice of color.

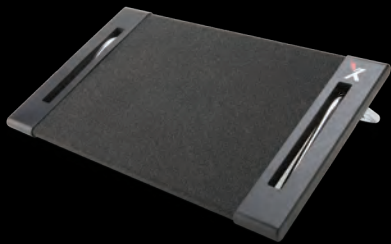


ELEMAX Cooling, Heat and Massage Chair

The ELEMAX Cooling, Heat and Massage Chair enhances your workday. It has 4 massage combinations, dual-fan cooling, and fast warming technology that make this the most dynamic office massage chair on the market.

Customer Focused

X-Chair's marketing strategy is innovative. X-Chair is going straight to the consumer and the consumer is telling us what they like. Without seeing the chair in person before they buy it, 97% of consumers who purchase the chair online are extremely satisfied with their X-Chair. This is the best gauge possible of how good a job X-Chair is doing at meeting the end user's needs.



Comfort Beyond the Seat

Improve your leg circulation with the X-Chair Under the Desk Footrest. This is designed to keep your lower body in motion throughout the day. Whether you are working from your home or work office this footrest provides added comfort.



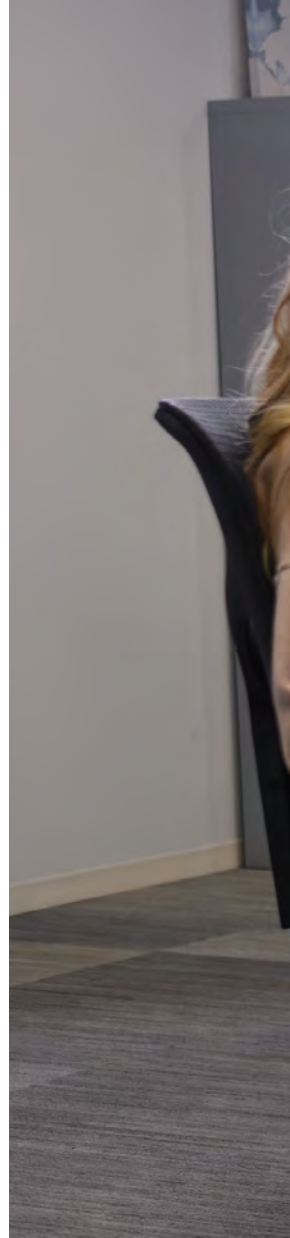
Dynamic Variable Lumbar (DVL)[™]

X-Chair's remarkable Dynamic Variable Lumbar (DVL)[™] support provides better support and a more comfortable fit and sit than anything else on the market. The DVL support needs absolutely no adjusting because it intuitively adjusts itself to your body every time you move. Responding to your weight, height, position, and the amount of pressure you place on it, the DVL Support pivots with you, keeping you comfortable and supported even as you change positions throughout the day. Be free to keep your mind on your work, not your back.

Welcome to the 21st Century

There is a new standard in office seating. With 10 ergonomic adjustments, the X-Chair[™] is able to fit your body like a glove. Fine-tune the arms, seat, back, headrest, and lumbar until you're relaxing in the most comfortable seat of your life. SciFloat Infinite Recline, Dynamic Variable Lumbar (DVL)[™] support, Tilt Lock, and Flex Mesh technologies combine to vault the X-Chair[™] to the head of the pack, making it the most technologically ergonomic chair in the world. Choose from vibrant color and material options to create a truly individualized workspace.





“

Great chair, great price. I love my X-chair. I sit at my home office desk 10+ hours per day, and the X-chair has really made a difference. I can feel that I am more the right height for the computer screen, my arms and back are better supported. I have far less pain at the end of the day.

Teresa, ★★★★★

”

X-TASK

X's classic black base pairs with the black and gray mesh color options to create an aesthetic that works in any office environment. The bold curves of the X-Chair deliver modern technology and comfort that can't be found in any other office chair. You'll notice your posture, concentration, and energy levels improve substantially soon after sitting in this dynamic chair.

Headrest Optional

Easily added
or removed

**X-Wheels
Optional**

Easily added
or removed



Fabric Options
Flex Mesh Technology



Black



Gray

Maximum Capacity
300 Pounds



Extensive Variable Recline (EVR)

Extensive Variable Recline is specific to the X¹ task chair. X¹ users will find that EVR provides a level of customizable comfort previously unimaginable.

Packed with Features

- Dynamic Variable Lumbar (DVL)[™] Support
- Tilt Tension & Tilt Lock
- Extensive Variable Recline (EVR)
- Adjustable Seat Height
- Height Adjustable Backrest
- Adjustable Seat Depth
- Adjustable Headrest Angle
- 4-Dimensional Arms

ELEMAX Cooling, Heat & Massage Chair Available



Learn more about the ELEMAX Cooling, Heat & Massage Chair on page 2.



“

I am very pleased with the quality of this chair. It was very easy to assemble and it looks cool and is very comfortable. If any of your prospective buyers are on the fence, rest assured that this is a high quality product.

John, ★★★★★

”

X²-MGMT

A striking polished aluminum base and four soft-to-the-touch K-Sport advanced performance material color options, from vibrant red to classic black, let you individualize your X² like never before. With its ergonomic Dynamic Variable Lumbar (DVL)[™] support, SciFloat Infinite Recline, bold curves, and advanced technology you'll never want to get up. Transform your work space into an unbelievably comfortable oasis.

Headrest Optional

Easily added or removed

Now Available in Wide Seat Option

Black Only

X-Wheels Optional

Easily added or removed



Fabric Options

K-Sport Advanced Performance Material



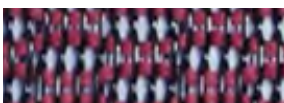
Black



Gray



White



Red



SciFloat Infinite Recline

Created specifically for X-Chair, SciFloat Infinite Recline facilitates motion throughout your day. Movement increases circulation, concentration, and energy levels—everything you need to boost both comfort and productivity in your workspace. Wheels are no longer the only thing a good office chair needs to keep you moving.

Maximum Capacity

Standard Seat
300 Pounds

Wide Seat
340 Pounds

Packed with Features

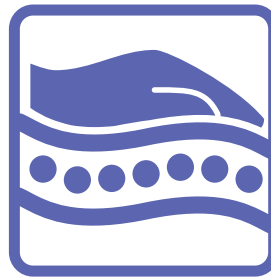
- Dynamic Variable Lumbar (DVL)™ Support
- Tilt Tension & Tilt Lock
- SciFloat Infinite Recline
- Adjustable Seat Height
- Height Adjustable Backrest
- Adjustable Seat Depth
- Adjustable Headrest Angle
- 4-Dimensional Arms
- K-Sport Performance Material

ELEMAX Cooling, Heat & Massage Chair Available





Learn more about the ELEMAX Cooling, Heat & Massage Chair on page 2.



**Now Available with
M-Foam Seat Option**

“

This is a very high quality, sturdy chair that has eased the discomfort of sitting for hours in a day. Everything works well and will last a long time. Easy to assemble. Really impressed with the quality of everything about it and even purchased the ELEMEX, and the headrest separately.

Stephen S, ★★★★★

”

X³-MGMT X³ incorporates most of the same design and features as X² but replaces the X²'s K-Sport material with the latest advancement in fabric technology, Advanced Tensile Recovery Fabric (ATR), a high resiliency molded foam seat (memory foam optional) and a full polished aluminum frame. In addition, ATR is water, spill and stain resistant, meaning your chair will continue to look good as new for years to come. When you feel the ATR difference you will wonder how you ever were satisfied with traditional fabric.

Headrest Optional

Easily added or removed

Now Available in Wide Seat Option

Black Only

X-Wheels Optional

Easily added or removed

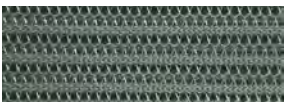


Fabric Options

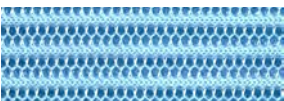
Advanced Tensile Recovery Fabric



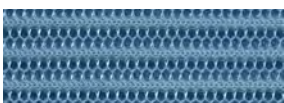
Black



Gray



Glacier

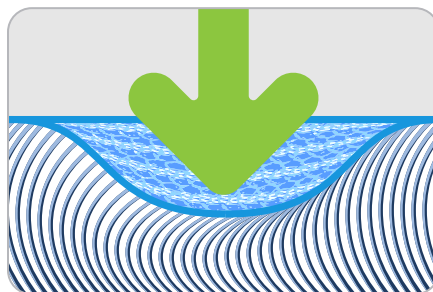


Blue

Maximum Capacity

Standard Seat
300 Pounds

Wide Seat
340 Pounds



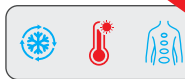
Advanced Tensile Recovery Fabric

Drawing its inspiration from modern material designs and ancient buttressing principles, ATR is a woven multi-layered nylon that is both responsive and supportive. Comparing to traditional fabrics, it has more give and spring and as a result it provides an enhancing layer to the X³'s already remarkable underlying molded seating support surface.

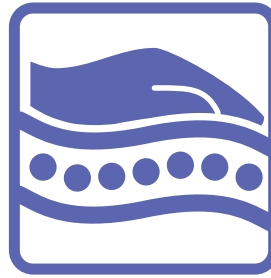
Packed with Features

- Dynamic Variable Lumbar (DVL)[™] Support
- Tilt Tension & Tilt Lock
- Advanced Tensile Recovery Fabric
- SciFloat Infinite Recline
- Adjustable Seat Height
- Height Adjustable Backrest
- Adjustable Seat Depth
- Adjustable Headrest Angle
- 4-Dimensional Arms

ELEMAX Cooling, Heat & Massage Chair Available



Learn more about the ELEMAX Cooling, Heat & Massage Chair on page 2.



**Now Available with
M-Foam Seat Option**

“

Prior to the X-Chair I had a \$150 chair I sat in 12 hours a day - that doesn't make sense. I wanted the Cadillac of office chairs. The X-Chair is that or maybe even the Rolls Royce of office chairs - this chair feels amazing, looks terrific, and the ELEMEX addition is amazing - I couldn't possibly have a higher opinion on this - yes it's expensive but it helps with virtually everything about your day sitting in a chair. Good for your back, posture, aches, and pains, and so on and so forth - If you can't afford this high end model, get a lower end one - don't buy a \$200 chair you sit in 10+ hours a day - you'll not be happy.

Michael, ★★★★★

”

X⁴-EXEC X⁴ is draped in your choice of top grain leather, premium leather or luxurious & incredibly soft Brisa. The seat, back, and optional headrest deliver delicious comfort from the moment you sit. X⁴ still utilizes a tight mesh weave in the seat back behind the leather to deliver the support and breath-ability you need with the comfort and style you deserve. X⁴ makes a loud statement without saying a single word.

Headrest Optional

Easily added or removed

Now Available in Wide Seat Option

Black Only

X-Wheels Optional

Easily added or removed



Fabric Options

Top Grain Leather, Premium Leather, and Brisa Soft-Touch



Black
/ Brisa Black



Brown
/ Brisa Brown



Cognac



Red
/ Brisa Rose



White



New Brisa Soft-Touch

Brisa fabric is crafted for the senses. Engineered from one-of-a-kind materials that create a soft yet durable fabric that is easy to maintain. Brisa is the first breathable performance fabric in it's class with a proprietary ventilation system. With Brisa, you can get the look and feel of premium leather in an advanced material.

Maximum Capacity

Standard Seat
300 Pounds

Wide Seat
340 Pounds

Packed with Features

- Dynamic Variable Lumbar (DVL)™ Support
- Tilt Tension & Tilt Lock
- Optional Brisa Soft-Touch
- SciFloat Infinite Recline
- Adjustable Seat Height
- Height Adjustable Backrest
- Adjustable Seat Depth
- Adjustable Headrest Angle
- 4-Dimensional Arms
- Top Grain or Premium Leather
- High Resiliency Molded Foam Seat

ELEMAX Cooling, Heat & Massage Chair Available

Learn more about the ELEMAX Cooling, Heat & Massage Chair on page 2.



“

Easy assembly, great product. I have sciatica and some lumbar issues so sitting is my enemy. This chair is beyond comfortable and does not bother my back at all after sitting in this for any length of time. Highly recommended.

Sandra, ★★★★★

”

X-BASIC

X-Basic has maintained the benefits of the DVL and Flex mesh, but we have limited some of the other features found on the X¹ through X⁴ lineup.

The mechanism has the tension control underneath and is less precise than the mechanisms on our other chairs. There is no seat slide functionality, and the arms are only height adjustable.

The foam seat offers a comfortable, supportive feel.

Headrest Optional

Easily added
or removed

X-Wheels Optional

Easily added
or removed



Fabric Options

Flex Mesh Technology



Maximum Capacity

280 Pounds



Dynamic Variable Lumbar (DVL)TM Support

The Dynamic Variable Lumbar (DVL)TM Support intuitively adjusts itself to your body every time you move. Responding to your weight, height, position, and the amount of pressure you place on it, the DVL Support pivots with you, keeping you comfortable and supported even as you change positions throughout the day. Be free to keep your mind on your work, not your back.

- Packed with Features**
 - Dynamic Variable Lumbar (DVL)TM Support
 - Height Adjustable Backrest
 - High Resiliency Molded Foam Seat
 - Under Seat Tension Adjustment
 - Adjustable Seat Height
 - Tilt Lock
 - Height Adjustable Arms
 - Flex Mesh Technology
- Learn more about X-Chairs features on page 4.



- **Smaller users:**
- **5'4" and below**
- **150 lbs or less**
- **Great fit for petite people**



“

Finally, a desk chair for smaller framed people. It's comfortable, sized just right, great back support, and easy to adjust. This was a great purchase in all ways.

Barbara, ★★★★★

”

X^S-VISION Every superhero needs a sidekick. That is what X^S-Vision is to our traditional flagship X-Chair number models. Smaller in size and stature, X^S-Vision packs a very powerful punch while filling the need for smaller end users without sacrificing any key features. Available with black or grey K-Sport material, the X^S-Vision is the only chair in the X-Chair lineup that features a white frame and base. With features like Dynamic Variable Lumbar (DVL)[™] support, height adjustable arms, adjustable chair height and seat depth, Extensive Variable Recline and tilt lock, the vision of your future productivity has never been more clear.

Headrest Optional

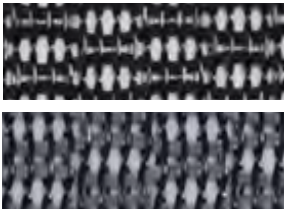
Easily added or removed

X-Wheels Optional

Easily added or removed



Fabric Options
Flex Mesh Technology



Black

Gray



White Chair Frame

Who said office chairs have to come in all black? X^S-Vision breaks away from the standard and is only available with a distinct white frame.

Maximum Capacity
250 Pounds

- Packed with Features**
- Dynamic Variable Lumbar (DVL)[™] Support
 - Tilt Tension & Tilt Lock
 - Extensive Variable Recline
 - Adjustable Variable Recline
 - Adjustable Seat Height
 - Adjustable Seat Depth
 - Height Adjustable Headrest
 - Height Adjustable Arms
 - K-Sport Performance Material
 - White Chair Frame

Learn more about X-Chairs features on page 3.



“

This chair was easy to put together and is really comfortable. It took a little while to get used to the adjustments and find the perfect position and now it's amazing. No turning back from here!!!!

Scott, ★★★★★

”

X^G-WING

While incorporating the same design and features as the X², the X^G-Wing adds a split back element for greater flexibility and performance. The X^G-Wing retains the lines of its classic cousin the X², but we have learned from our customers and created an innovative flexible upper back. In the same way that the Dynamic Variable Lumbar (DVL)[™] support already adjusts to meet each individual's need for proper lumbar support, the X^G-Wing Split Back adjusts to match each individual.

Maximum Capacity

340 Pounds

**X-Wheels
Optional**

Easily added
or removed



Optional Adjustable Headrest

X-Project is also compatible with X-Chair's adjustable headrest. Easily adjust the angle of X-Chair's headrest to find comfort no matter what position you want to sit in.



“

Best office chair I have ever used. So comfortable. Now work at home full time and I love this chair. Supportive, adjustable, flexible, quality. Don't do the office stores, nothing compares there.

Sandra, ★★★★★

”

Headrest Optional

Easily added or removed

X-Wheels Optional

Easily added or removed

X-PROJECT

The X-Project from X-Chair offers many of the incredible features and the unique styling you would expect from an industry leader, with a value never before seen in the X-Chair lineup! Utilizing Advanced Tensile Recovery™ (ATR) fabric, a three-dimensional multi-layered knit polymer that is both forgiving and supportive, the X-Project combines a sophisticated look and satisfying sit unparalleled by any other chair in its class. Equipped with all the key features to fit the majority of users – including your choice – with or without headrest, X-Project is an excellent solution for outfitting an entire workspace or office on a budget.

Maximum Capacity
250 Pounds

X-SIDE You ask and we deliver. The incredible ergonomic comfort of X-Chair's proprietary Dynamic Variable Lumbar (DVL)[™] support is now available in a side chair. No matter how many people use it each day, the X-Side's backrest adjusts automatically to provide personalized support for everyone. Flex Mesh Technology in the seat and back delivers additional ergonomic comfort and facilitates improved concentration. The X-Side features a striking polished aluminum uni-body frame that has been molded from a single piece of metal for maximum strength and a beautiful composition. Experience the responsive comfort of X-Chair in this stunning and versatile new design.



Maximum Capacity

250 Pounds

“

Combined with some ergonomic and physiotherapy techniques, this chair ended what I thought was becoming chronic low back pain. Fits perfectly under my desk as well. Very satisfied!

Patrick, ★★★★★

”



X-STACK Imagine a folding chair that's actually comfortable, a folding chair that provides ergonomic support and the freedom of motion. It was unheard of...until now. The X-Stack has raised the bar for space-saving seating solutions. Its extraordinary Pivot Backrest moves with the user, facilitating improved circulation and concentration by allowing natural movement. And when X-Stack's job is done, the ergonomically contoured seat neatly folds up for compact storage. Multiple X-Stacks fit comfortably together to form a space-saving and organized queue. Convenience, comfort and style have come together at last. The Pivot Backrest is unique to the X-Stack. As you lean back, the backrest moves with you, maintaining its ergonomic contour and granting freedom of motion for extraordinary comfort.

Maximum Capacity

250 Pounds



“

I've had the YoYo for a few days now. Great height for my standing desk, I can lean against the stool or sit fully on it. Very comfortable in both cases. The post's camber is solid and steady. Core feels great!

Michael, ★★★★★

”

Fabric Options



Black

24" - 34" Height Range

Maximum Capacity

250 Pounds

X-YOYO

Looking for more support in your less than traditional work-space? Meet X-YoYo, the first model available in the new X-Chair Active-X seating collection. X-YoYo features our exclusive Ergo-Saddle™ and patented Norwegian designed Floating Pitch™ mechanism. Together, they provide a comfortable seating position that allows for your natural posture to take hold. You'll lose track of whether you are sitting or standing, and for that, your body and productivity will thank you. Featuring 360° swivel, tilting and auto-return, X-YoYo provides exquisite movement, support and comfort unlike any stool or active seat before it. Simple, flexible, fully loaded, and ready for any work environment.

Textiles & Bases

X-Chair's fabric suspension system disperses your weight evenly across the chair to remove weight from sensitive pressure points. This improves circulation and keeps you comfortable so you can sit as long as you like without feeling that you need to change positions. The X⁴ is covered in supple top grain leather, ultra-comfortable premium leather or Brisa soft touch that looks as luxurious as it feels. Each fabric is available in your choice of color.



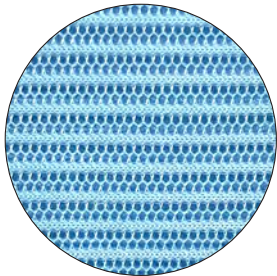
Flex Mesh Technology

X¹ comes with Flex Mesh Technology, a breathable and durable mesh that is up to the task of supporting you all day.



K-Sport Advanced Performance Material

X² has K-Sport advanced performance material, which features a tighter weave for a softer feel.



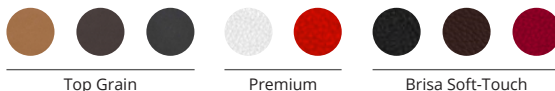
Advanced Tensile Recovery Fabric

ATR Fabric on X³ is a woven multi-layered nylon that is both forgiving and supportive.



Top Grain Leather, Premium Leather, and Soft-Touch Brisa.

The X⁴ is covered in supple top grain leather, ultra-comfortable premium leather or Brisa soft touch that looks as luxurious as it feels.





Satin Black Base

standard on X¹



Polished Aluminum Base

standard on X², X³, X⁴



Polished Aluminum Stool Base

featuring 24" Large Stool Ring optional on all models



Cylinder Height Options

optional on all models



Short
14.5" - 18.5"



Standard
15.75" - 19.75"



Tall
16.5" - 20.75"



Stool
21.5" - 28.5"



New Product



X77 MASSAGE CHAIR

Introducing the X77 Massage Chair, designed to achieve total-body well-being through innovative massage technology. No matter your age or activity level, your body experiences daily stress. Work, sleep, exercise, travel, and eating. Everything you do puts stress on your body. For years, X-Chair's line of office seating products has been able to reduce the amount of stress your body endures while working with its staple ergonomic offerings. Now, we're tackling the stress your body endures outside of the office.

HIGHLIGHTED PROGRAMMED FUNCTIONS



Quick

This massage session prepares your body for the day. It's characterized by gentle massage movements, gentle stretching, mobilization movements to loosen your back and peripheral air massage to encourage blood flow to your calves and arms.



X-Stretch

Carefully crafted stretching movements including hip rotation and back extension. Designed to help stretch and loosen the muscles of the entire body.



X-Sport

Vigorous roller and air massage actions are combined to maximize blood flow to all the large muscle areas. Back massage and back mobilization help loosen and relax tight muscles, providing inter-vertebral traction through back extensions.



Zero Gravity Recline

Improve blood circulation, breathe more easily and deeply and alleviate pressure on the joints and spine in the True Zero Gravity position.

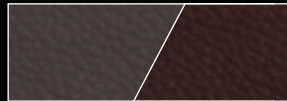


COLORS & FABRICS

Brisa Soft-Touch



Red Brisa / Black Brisa



Brown Brisa / Brown



Black Brisa / Black

Synflex



Black / Black



Brown / Brown



TOP FEATURES



Heat



Full-Body Air Massage



Foot Roller



Acupressure Point Locator Function

New Product



iPad Holder

The X-Table comes fitted with an iPad holder freeing up additional space on the tabletop for more items. It fits the regular sized iPad, iPad Air and/or iPad mini.



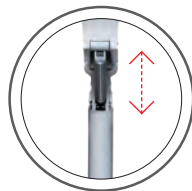
Durable Ergonomic Curved Desktop

The X-Table surface is 27.5" x 19" which is more than enough for an iPad, a laptop computer, and a cup of coffee. Its unique curved design provides ergonomic comfort for those wanting to slide it closer to them while working.



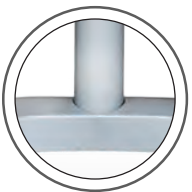
Locking Casters

The X-Table casters are fully lockable. Allowing you to keep your laptop, monitor, and other work valuables safe while being stationary.



Height-Adjustable Desktop

Effortlessly adjust the height of X-Table from 28" to 41". The smooth action of the arm provides plenty of legroom for individuals 4'11" tall and up to 6'11".



Silver Frame

The X-Table's silver frame sustains a maximum weight capacity of 29.74 pounds. Giving users the ability to hold multiple items at one time.



X-TABLE

The X-Table is a height-adjustable and mobile laptop desk which offers a unique, simplistic, yet contemporary design. Easily move from a sitting to a standing position while working in your home, the office, dorm or workspace. Adjusting the desk up and down is an effortless transition that helps you increase your blood flow and focus. The X-Table is also designed to move with you when you need it to, making your daily tasks a breeze. Enhanced with locking wheel casters, it gives you confidence that your desk contents will remain where they're supposed to.

Desktop Color Options



Cherry



White



Black

New & Improved Product

X-FLEXTOP The X-FlexTop rises to the occasion. This dynamic desk easily allows you to work while standing, increases daily comfort and allows you to move around while you work. You can also use the X-FlexTop to slightly change your desk height to make sure your monitor or laptop are at a comfortable eye level when sitting in your X-Chair. The X-FlexTop and an X-Chair are the perfect combination, creating a healthy and productive work environment.



30.1"W x 20.1"D x 2.2"H 16.9"H fully lifted



Available in Standard or Locking
Easily added or removed



X-FOOTREST

X-Chair's Under Desk Footrest allows your lower body to stay in movement throughout the day. The footrest is placed on, not screwed onto, its polished aluminum frame so that the surface of the footrest can move with you throughout the day. It slides easily across the frame so you can change the angle of your feet as many times as you like. This helps keep your legs in motion even when you sit for long periods, and makes it easy to find a comfortable position. In addition to keeping your legs comfortable, lifting your feet even slightly helps tip your pelvis backward so you sit further back in your seat where you can feel the full effect of your chair's lumbar support. X-Chair's advanced Dynamic Variable Lumbar (DVL) support is made to give ideal support to any user, but it can't do anything for you if you sit on the edge of the seat without touching the backrest. The Under the Desk Footrest helps you maximize the ergonomic benefits of the X-Chair.

X-WHEELS

X-Wheel Blade Casters represent a breakthrough in seating technology and comfort. Just like a building, a chair is only as good as its foundation; and like a person, core stability is the key to health. The wheels on your chair are the foundation that creates core stability and leads to healthy, smooth, ergonomic movement. Featuring 100% rubberized blade wheels and a free ball-bearing core, X-Wheel Blade Casters are quieter and smoother. They work better on hardwood and pile carpet alike, and they are more gentle on tile, hardwood, vinyl, carpet, and almost any surface. Ball bearing swivels spin easily, preventing scuffing and scratching. And they look great! Simply put, for a small investment you can upgrade your chair's performance and enhance your seating experience.

Coming Soon

New products arriving in 2022



X-Chair is expanding its office chair lineup with the X9 C-Suite. This premium chair is beautifully designed for an executive look, ergonomically enhanced, featuring DVL and luxurious M-Foam throughout.



X-Chair is soon to introduce X-Advanced Armrests. The armrests and arm pads rotate a full 360 degrees, shifting forward, back, left, right and diagonally. X-Advanced Armrests feature perpendicular locking, and provide superior ergonomic support during your workday. With endless configurations and a sleek design, these are the most versatile ergonomic armrests available on the market.



360° Armrest Rotation



Arm Pad 360° Swivel





RETAILERS

X-Chair is committed to supporting a carefully selected group of nationwide retailers.



E-TAILERS

X-Chair is available online through xchair.com and a very small group of authorized retailers.



TERRITORY REPS

X-Chair will consider working with individual reps or rep groups in selected regions.



OFFICE FURNITURE DEALERS

X-Chair is committed to making its chairs and accessories available to companies, large and small, through a curated network of high quality mid-market office furniture dealers located throughout the USA.



INTERNATIONAL DEALERS & MASTER LICENSEES

X-Chair is open to exploring international master licensee relationships and, in select situations, opening individual international dealers.



X-CHAIR AMBASSADORS

X-Chair's unique ambassador program enables individual evangelists for the chair to earn affiliate commissions by selling the chair to other individuals.



IN-STOCK SHIPS WITHIN 24 HOURS

Generally, all shipping orders are processed within 24 business hours and shipped directly to the location chosen.

Certifications

All X-Chairs are ANSI/BIFMA X5.1 certified. This standard is intended to provide manufacturers, specifiers, and users with a common basis for evaluating the safety, durability, and structural adequacy of general-purpose office chairs.

General-purpose office chairs are normally used in an office environment and may include, but are not limited to those seating styles typically referred to as: executive/management, task/secretarial, side/guest chairs, nesting folding chairs, tablet arm chairs and stools.

This standard describes the means of evaluating general-purpose office chairs, independent of construction materials, manufacturing processes, mechanical designs or aesthetic designs. All X-Chairs are also ANSI/BIFMA E3 Furniture Sustainability Level 2 certified. The purpose of this voluntary standard is to provide measurable market-based definitions of progressively more sustainable furniture by establishing performance criteria that address environmental and social aspects throughout the supply chain. It addresses product-based characteristics in the general areas of materials, energy usage, human and ecosystem health, and social responsibility impacts. The standard was designed to allow for multiple levels of achievement and to provide an open alternative to proprietary protocols.



Office Chairs Warranty

X-Chair warrants this product for a period of 15 years, subject to the following exceptions:

All parts and materials are warranted for 5 years. During this time, X-Chair™ will provide replacement parts for any damage that is due to defect in material or workmanship. For the first 2 years, X-Chair™ will bear the entire cost of replacement parts and shipping. For the next 3 years, X-Chair™ will bear the cost of the replacement parts, but the customer will be liable for the cost of shipping. All non-moving metal components of the chair are warranted for an additional 10 years (for a total of 15 years).

The customer must provide appropriate pictures of their damaged product if requested. A defect in material or workmanship does not include damage to a product, or failure of a product to operate or perform properly or to maintain appearance, caused by (1) misuse or abuse of the product; (2) improper assembly or assembly that was not as recommended by the written assembly instructions; (3) normal wear and tear; (4) a natural disaster or an Act of God; (5) transportation; (6) an unauthorized modification made without the express written consent of X-Chair™; (7) improper storage; (8) the natural aging of materials such as wood, leather, and fabric which results in colors shifting during use; (9) crocking or reverse crocking of dyes from clothing on our seating materials.

Products damaged in these ways will not be considered defective and will therefore not be repaired, replaced, or refunded. We shall not have tort liability with respect to a product, and we shall not be liable for any consequential, economic, indirect, special, punitive, or incidental damages arising from a product defect.

ELEMAX/X-HMT Warranty

All parts and materials are warranted for 3 years. During this time, Future Seating will provide replacement parts for any damage that is due to defects in material or workmanship. For the first 2 years, Future Seating will bear the entire cost of replacement parts and shipping. For the 3rd year, Future Seating will bear the cost of the replacement parts, but the customer will be liable for the cost of shipping. The customer must provide appropriate pictures of their damaged product if requested. A defect in material or workmanship does not include damage to a product, or failure of a product to operate or perform properly or to maintain the appearance, caused by (1) misuse or abuse of the product; (2) improper assembly or assembly that was not as recommended by the written assembly instructions; (3) normal wear and tear; (4) a natural disaster or an Act of God; (5) transportation; (6) an unauthorized modification made without the express written consent of Future Seating; (7) improper storage; (8) the natural aging of materials such as wood, leather, and fabric which results in colors shifting during use; (9) crocking or reverse crocking of dyes from clothing on our seating materials. Products damaged in these ways will not be considered defective and will therefore not be repaired, replaced, or refunded. Future Seating shall not have tort liability with respect to a product, and shall not be liable for any consequential, economic, indirect, special, punitive, or incidental damages arising from a product defect.

XT-Massage Warranty

Our X-Chair XT-Massage Chair 3-Year Limited Warranty offers you the peace of mind and confidence that comes with owning this high-quality product. Years of trouble-free relaxation await. For an additional fee, we also offer a 5-Year Extended Limited Warranty. Our limited warranty includes on-site service, parts, and labor in most locations in the United States and Canada. Some restrictions apply.

Patents

We hold US Patents on both our SciFloat Infinite Recline mechanism and our Dynamic Variable Lumbar™ (DVL) support. Both patents will help to protect our wholesalers and allow them to flourish with a unique and powerful product, knowing they have market protection in place.



Advertising

X-CHAIR advertises on mainstream and local media platforms. Spending \$14 million a year on print, radio and TV placements.



Times Square NYC
X-HMT

Print Outlets

The New York Times



THE WALL STREET JOURNAL

The Miami Herald

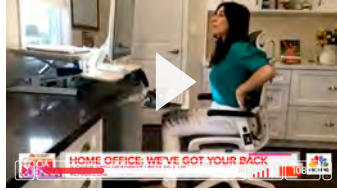


The Chicago Tribune
The Los Angeles Times
Austin American
Boston Globe
Philadelphia Inquirer
Houston Chronicle
San Francisco Chronicle
Seattle Times
Dallas Morning News
Louisville Courier

Miami Herald
Nashville Tennessean
Colorado Springs Gazette
Bloomberg Businessweek
Southwest: The Magazine
United Hemispheres
Sky-Delta Magazine
Kiplinger Personal Finance

RTB Catalog | ELEMEX

TV Outlets



See us on the Today Show!
XChair.com/video



- | | |
|-------------------|--------------------|
| Bloomberg | Golf Channel |
| CNBC | Headline News |
| CNN | MSNBC |
| ESPN News | BBC |
| ESPN | TNT |
| Fox Business News | TBS |
| Fox News | Shannon Bream Show |

History of Sitting | X-HMT

Radio Outlets



- Bloomberg
- Fox Business News
- National Public Radio (NPR)
- CNBC
- Patriot
- ESPN
- Fox News
- CNN
- iHeart Radio

- The Dennis Prager Show
- The Stephanie Miller Show
- The Hugh Hewitt Show
- The Thom Hartman Program
- The Herd with Colin Cowherd
- Glenn Beck
- Mark Levin
- Sean Hannity Show



 **X-CHAIR**

X77 MASSAGE CHAIR

Live the Dream



Features

- Intelligent 4D Massage Mechanism
- L-Track Massage Path
- Acupressure Point Locator Function
- Heated Rollers
- Pinpoint Calf Massage
- Foot Rollers
- Heat
- Full Body Air Massage
- Chromotherapy
- Automatic Recline
- Zero Gravity Recline
- USB Charger Port
- Stylish and Simple Remote Control

LEARN MORE ABOUT THE X77 MASSAGE CHAIR ON PAGE 26

www.xchair.com | 844-4-XCHAIR | sales@xchair.com