

RESERVA  
— AT LA MONTAÑA —

*Villas del Mar, Palmilla*







*“A stretch  
of private luxury.”*



# *First come, first served.*

A story that starts back in '56, when the son of a Mexican president set his sights on a particular stretch of land in San José del Cabo and founded Palmilla. With the addition of Villas Del Mar in '96 the rest is history that continues to be written.

Having had first dibs back then, Palmilla is the definition of strategical positioning. No other place in town offers the same level of effortless luxury and contact with nature. From sunrise to sun down you are immersed in the lightness of the surroundings.







## *There are two sides to every story.*

Within Villas Del Mar and sitting atop La Montaña is Reserva. A boutique community of only eight two-story buildings composed of sixteen luxury villas all favored by unbeatable high vistas of the Sea of Cortez.

With eight penthouse villas and eight ground level villas, Reserva provides an effortless way of experiencing the luxury and comfort of the neighborhood.

Designed to provide a sense of ease with every step, from the moment you get off the car to standing at the edge of your striking infinity pool you will stay on a single level environment.






## *Classic,*

While retaining the classic allure of Palmilla's signature colonial style, this new enclave is in complete sync with the times, each unit is built with a unique and contemporary identity; reflecting those who inhabit them.

A well-thought distribution of space that has taken into account privacy as a top priority. From the insulation space between all eight buildings and its respective two units per building to the design elements of each home so that you are in the presence of yours and nature only. We did not sacrifice privacy for convenience, that is the beauty of Reserva's design.

*with a twist.*





*The only source for  
knowledge, is experience.*



Brought forth by over thirty years of experience developing properties in Los Cabos, Reserva is a rather studied project that takes full advantage of its topography, the lifestyle of the area as well as climate and its location. Pristine and immaculately kept private beaches are thriving with marine wildlife as a testament of the care and attention to detail that the community is well known for.



An aerial photograph of a tropical beach resort. The image shows a wide, sandy beach with turquoise water and white waves crashing against dark rocks. In the foreground, there are several buildings with red-tiled roofs and white walls, surrounded by palm trees. The sky is a deep blue, and the overall scene is bright and sunny.

*There really is such a thing as a  
soaring property value.*

Residents of Reserva enjoy access to all Villas Del Mar amenities and services like the community's Private Beach, Club 96, Espíritu Fitness Club, Organic Community Gardens, Cafe Espíritu, Palmilla Shoppes and the world renowned One & Only Palmilla Hotel.

The community's staff is a key element of life at Reserva, they are onsite and available to homeowners 24/7 for any and all needs.

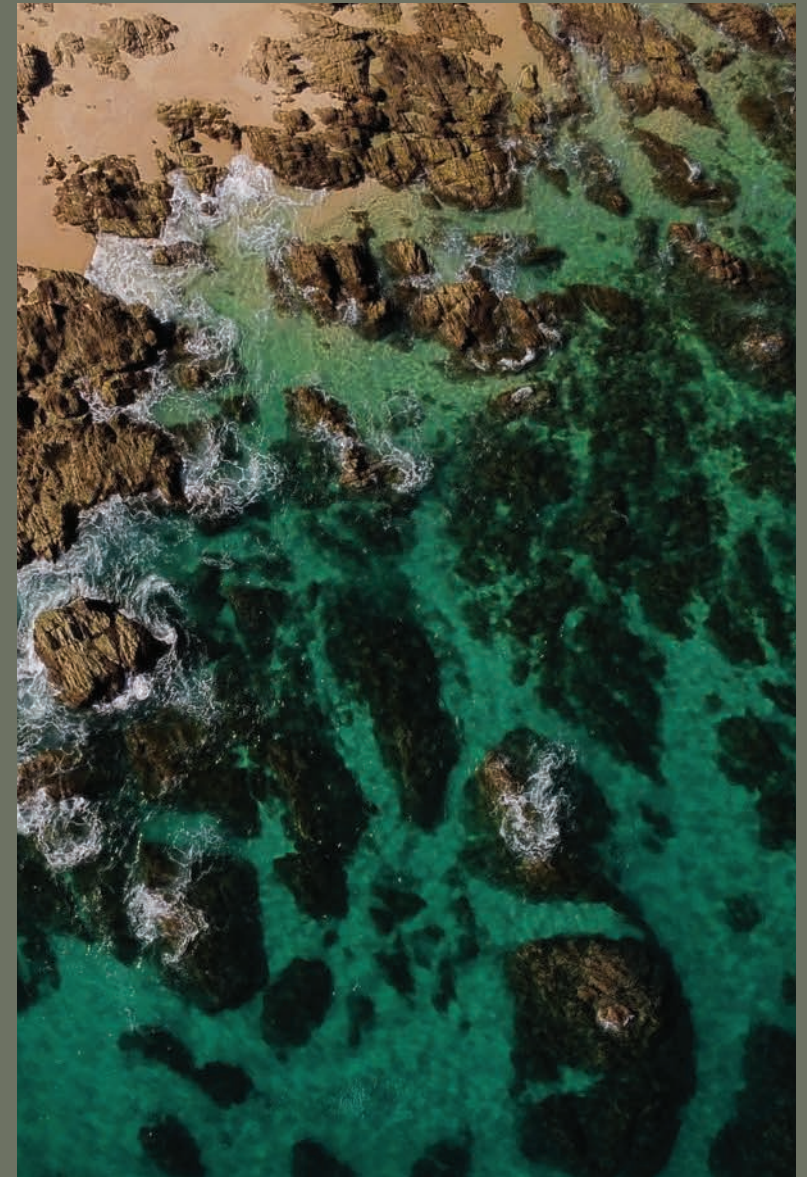




*Golf Course*



*Organic Garden*



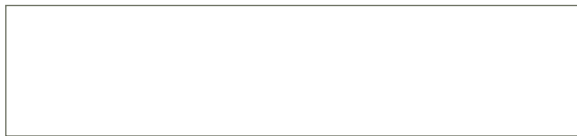
*Private Beach*







*The neihghborhood*







*Club Espiritu*







*Club 96*







*Palmilla Shoppes*



*Fitness Center*







# *All you have to do is get here.*

Del Mar's residential management company is available for homeowners to provide excellence in service.

Each homeowner is assigned a Guest Services Manager, a single-point of contact for personalized services needed.

A Guest Services Manager oversees the care and maintenance of the home, so homeowners experience the luxury and comfort that comes from knowing that your asset is wholly managed, inside and out. Del Mar Management offers a vast menu of personal in-home services including but not limited to:

- Airport transfers, private transportation & chauffeur services
- Grocery shopping
- Butler & chef services
- Housekeeping & babysitting
- Storm preparation & reset
- Maintaining local vehicles
- Even coordination such as beach BBQs and bonfire or cocktail parties.
- Activities coordination





## *Key features*

High ceilings make the already vast space of up to 4,000 square feet feel more spacious. Ready to move in with top of the line appliances from Wolf and Sub Zero are included and along floor to ceiling sliding pocket doors they are but a few of the many luxurious features this property has to offer.



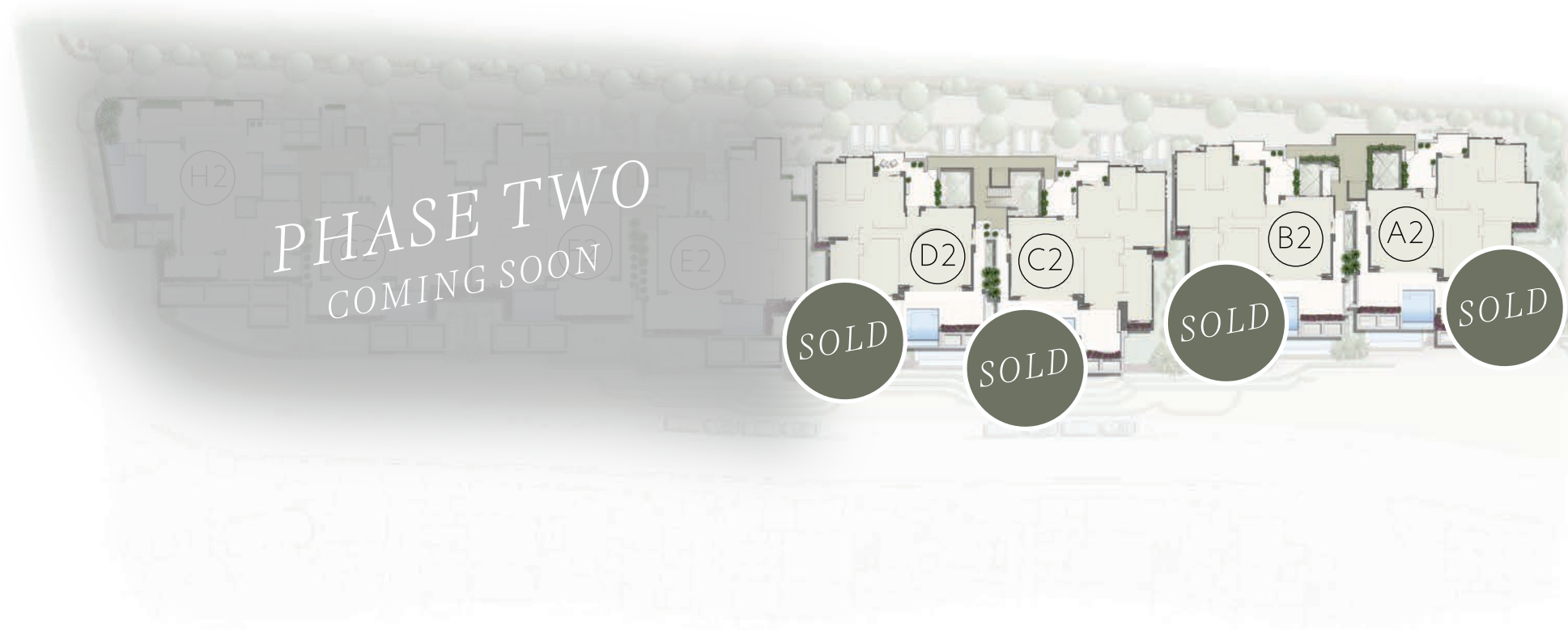


*Lower-Level Distribution*

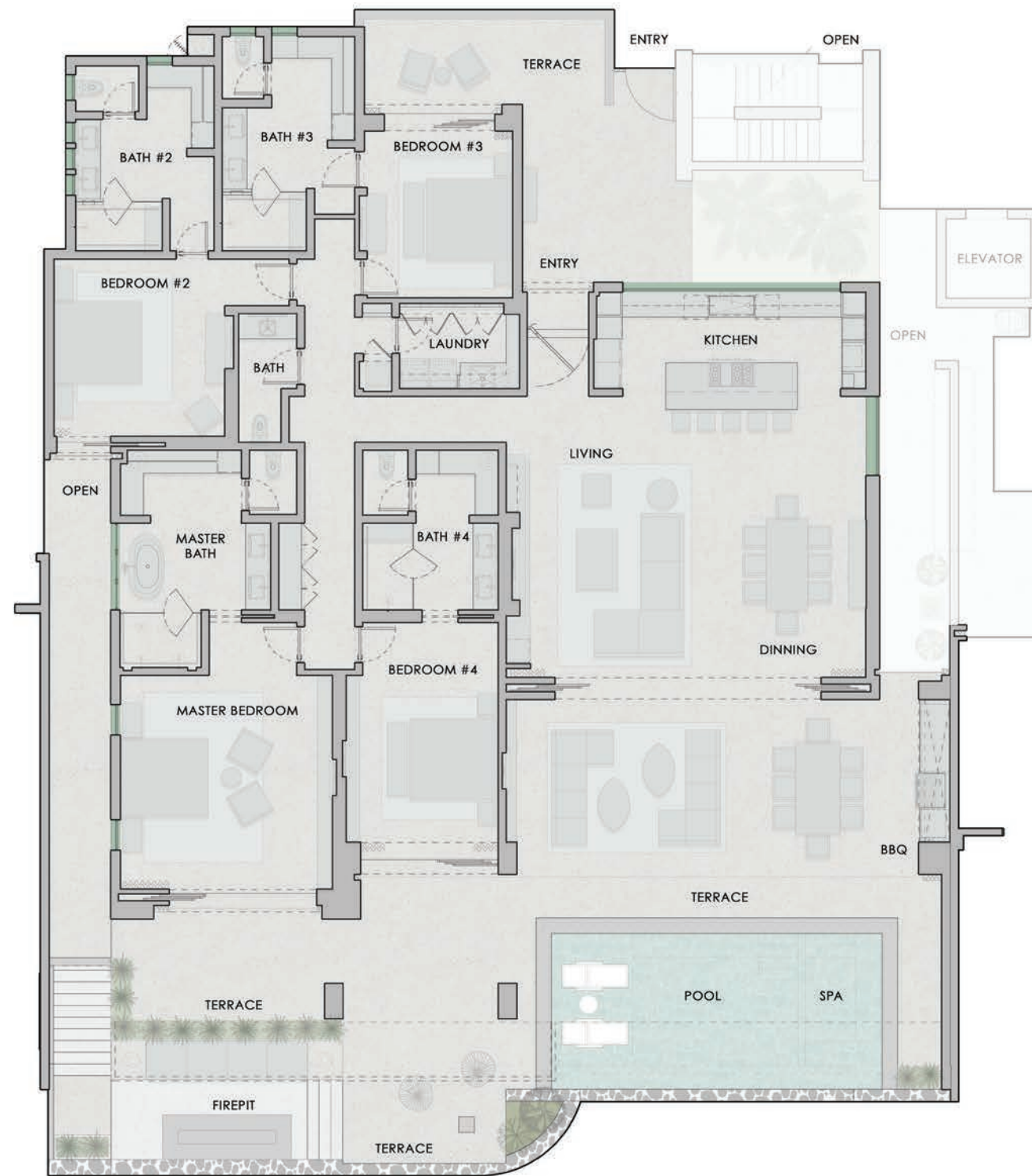




## *Upper-Level Distribution*







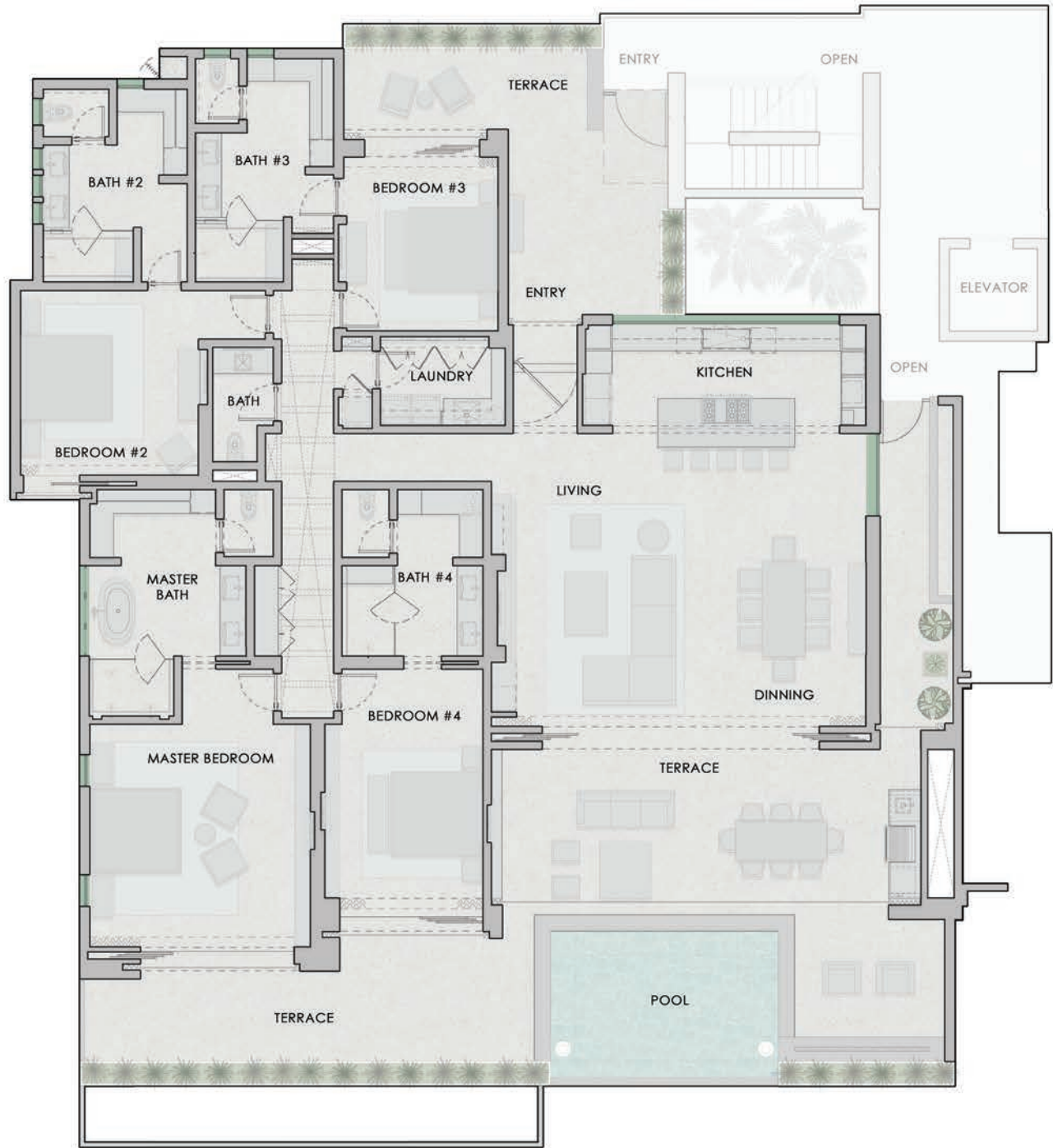
## Ground Level Layout

INTERIOR AREA	3,600 SQ FT
TERRACES	2,350 SQ FT
GARAGE	550 SQ FT
POOL	350 SQ FT
TOTAL	6,850SQ FT

\* Areas are approximate and  
can vary depending on unit.



Penthouse Layout



INTERIOR AREA	3,600 SQ FT
TERRACES	1,650 SQ FT
GARAGE	550 SQ FT
POOL	220 SQ FT
TOTAL	6,020 SQ FT

\* Areas are approximate and can vary depending on unit.



# COMMUNITY MAP

OASIS PALMILLA  
I  
PALMILLA DUNES

THE SHOPPES  
AT PALMILLA

SAN JOSE DEL CABO  
10 MIN DRIVE

MAIN AIRPORT  
20 MIN DRIVE

H I G H W A Y

H+  
HOSPITAL

< CABO SAN LUCAS  
20 MIN DRIVE

RESERVA  
— AT LA MONTAÑA —

L A M O N T A Ñ A

LEGADO

SUNSET  
PAVILION

ENTR  
GATE

LA MONTAÑA

H2	G2	F2	E2	D2	C2	B2	A2
H1	G1	F1	E1	D1	C1	B1	A1

PRIVAT  
BEACH  
TRAM

FITNES  
CENTE

**BEACH  
ACCESS**

BEAC  
100%

BEAC



One&Only  
PALMILLA HOTEL

VILLAS DEL MAR

# S F A O F C O R T E Z



*Do you see it?*







RESERVA  
AT LA MONTAÑA