

TIPPECANOE SOIL & WATER CONSERVATION DISTRICT



2015 ANNUAL REPORT

The Tippecanoe County Soil and Water Conservation District is committed to provide quality technical, educational, and informational resources for the community through leadership, service, and citizen involvement to foster natural resource conservation and environmental stewardship.

SUPERVISORS AND STAFF

The official governing body of a Soil & Water Conservation District (SWCD) consists of five supervisors. Three supervisors are elected (one each year for a three year term) at a district annual meeting. Two are appointed (also for staggered three year terms) by the State Soil Conservation Board based on recommendations of the current supervisors in the district. As a result, the selection of all five supervisors is based on local input and through election of the local people they serve.

SWCD Board of Supervisors:

Josh Cox, Chairman ~ Elected - Term Expires 2016
Curt Vanderkleed, Vice Chairman ~ Elected -Term Expires 2018
Dan Smith, Supervisor ~ Appointed - Term Expires 2017
Roger Strasubrger, Supervisor ~ Elected -Term Expires 2017
Krista Ziller, Supervisor ~ Appointed - Term Expires 2018

SWCD Staff:

Angie Miller, Rural Conservationist
Chris Remley, District Administrator

Partnership Staff:

Mark Eastman, District Conservationist
USDA Natural Resources Conservation Service

Katie Fagan, Soil Conservationist
USDA Natural Resources Conservation Service



2015 SWCD Board of Supervisors

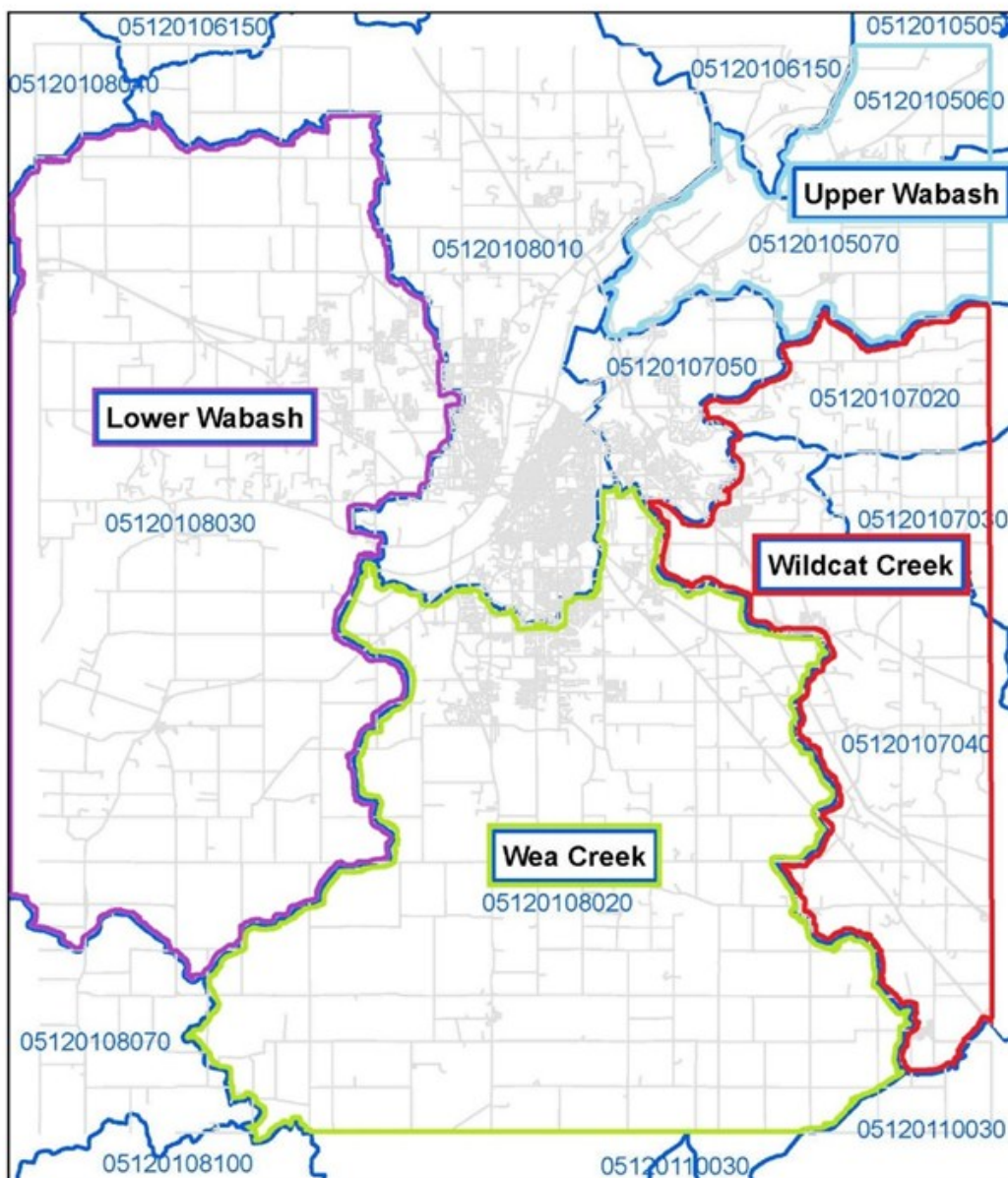
We are pleased to reflect on our accomplishments of 2015 that follow and hope that you enjoy your fellowship with others who share our commitment to Tippecanoe County's natural resources. These resources sustain our economy and provide the quality of life we seek in clean air, water and soil.

WHAT IS A WATERSHED?

A watershed is an area of land that collects and drains to one location, such as a river. When rain falls in a watershed, water travels toward the lowest point. Watersheds vary in size and they are identified by numbers called Hydrologic Unit Codes (HUCs).

No matter the size, watersheds are important because they supply us with water that we rely on for survival. Lakes, rivers, and wetlands provide habitat for countless species of animals, insects, and plants. Human activities within a watershed can ultimately impact the water resources of the area.

Tippecanoe County HUC 11 Watersheds

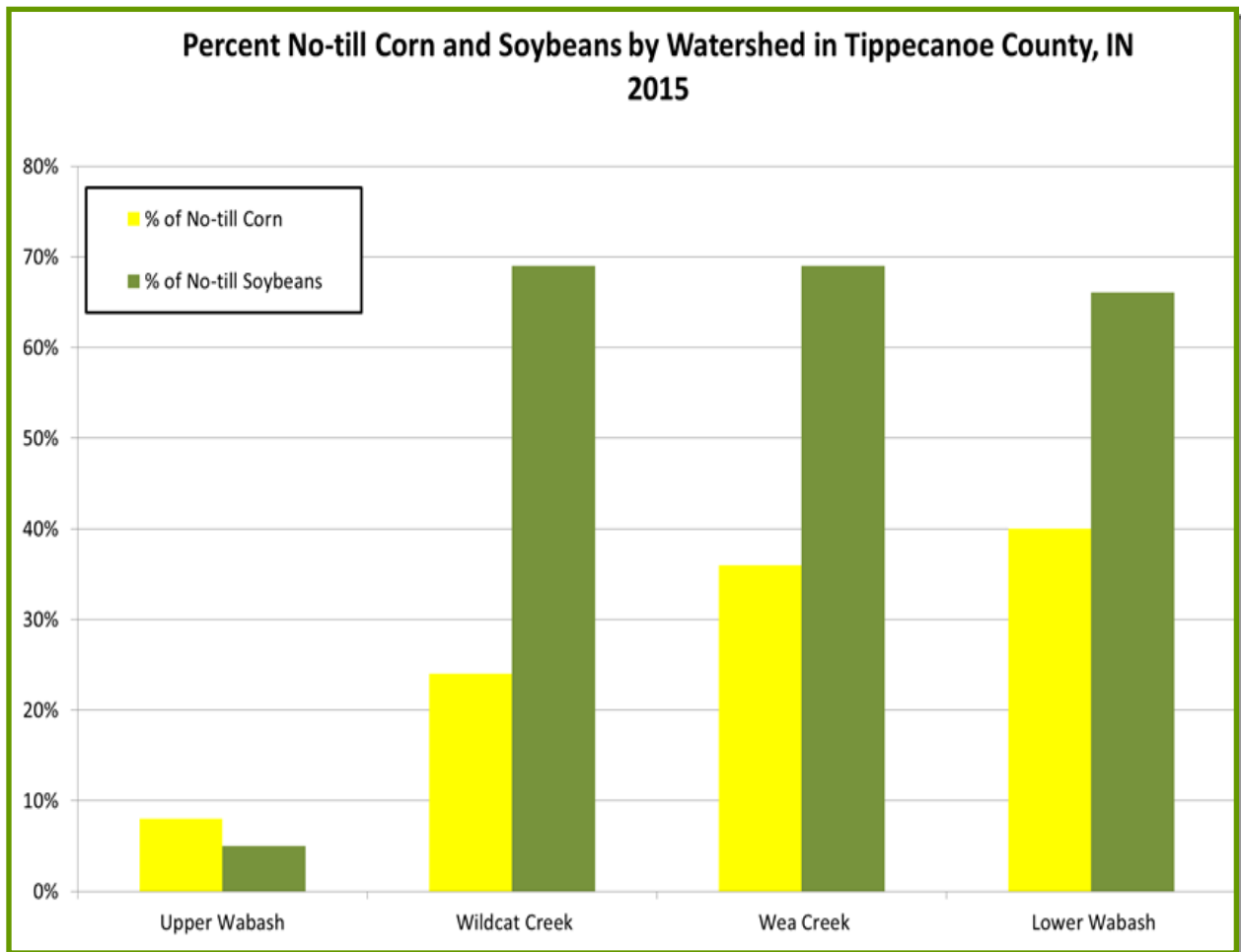


STABLE SOILS AND SOIL QUALITY

RESOURCE CONCERN — SOIL EROSION & SEDIMENTATION

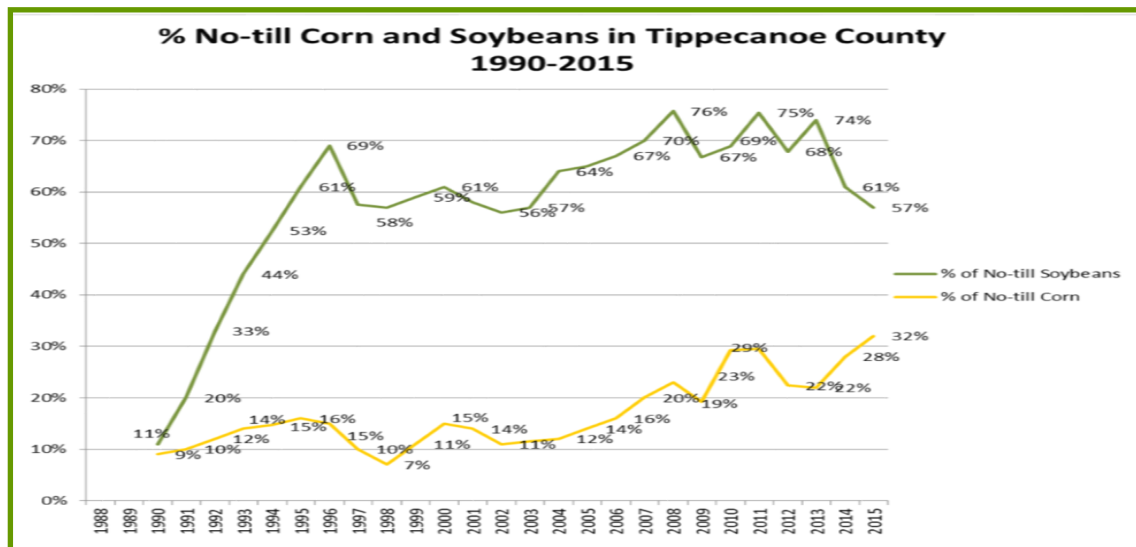
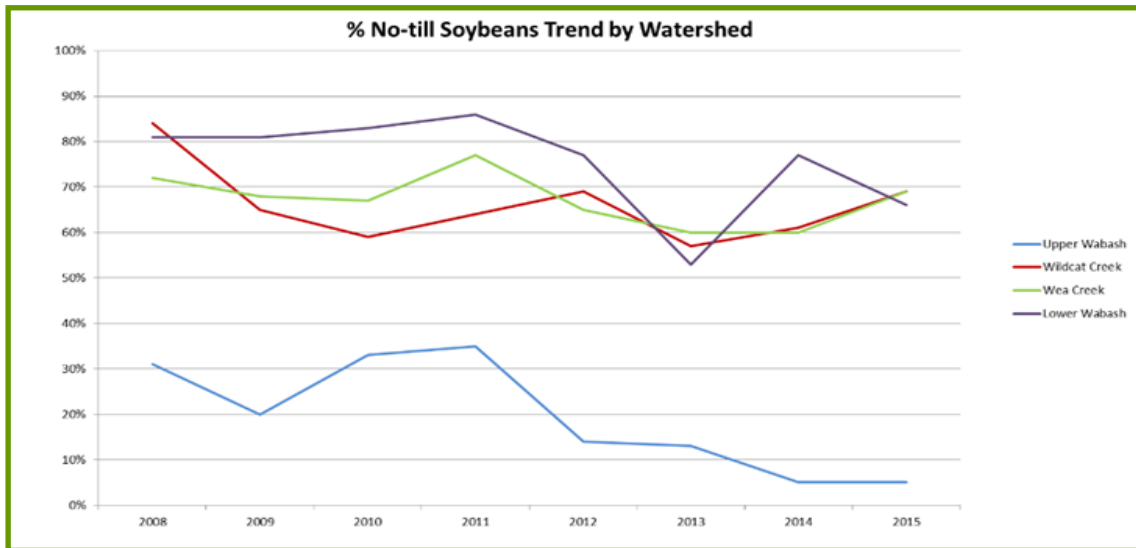
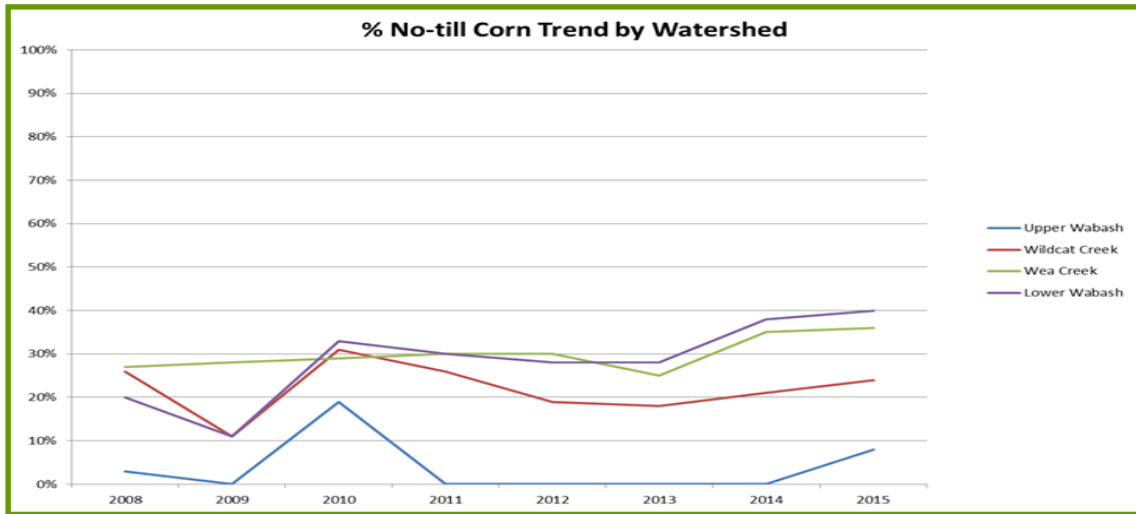
Our Goal: No till practices shall be increased by 2,500 acres in Tippecanoe County by 2020. **What we've accomplished...**

- *Performed annual tillage transect*
- *995 acres converted to no-till*
- *Hosted a bi-annual conservation system workshop “Emerging Ag Technologies” with a focus on no-till in partnership with Greater Wabash River RC&D*
- *Conducted ongoing site visits with landowners promoting conservation systems*
- *Promotion of no-till as part of conservation cropping system through website and social media*
- *Promotion of no-till and soil health at :*
 - *Little Wea Creek “MRBI and Pie” outreach meeting (MRBI - Mississippi River Basin Initiative)*
 - *4-H Fair “Soil Health” display*
 - *Women Caring for the Land event*



STABLE SOILS AND SOIL QUALITY

ADDITIONAL NO-TILL GRAPHS:

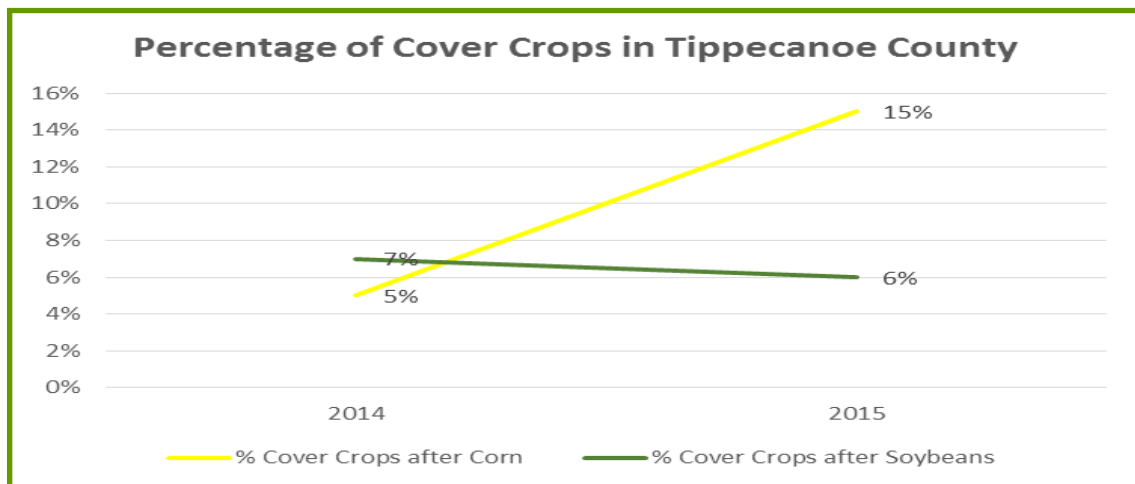
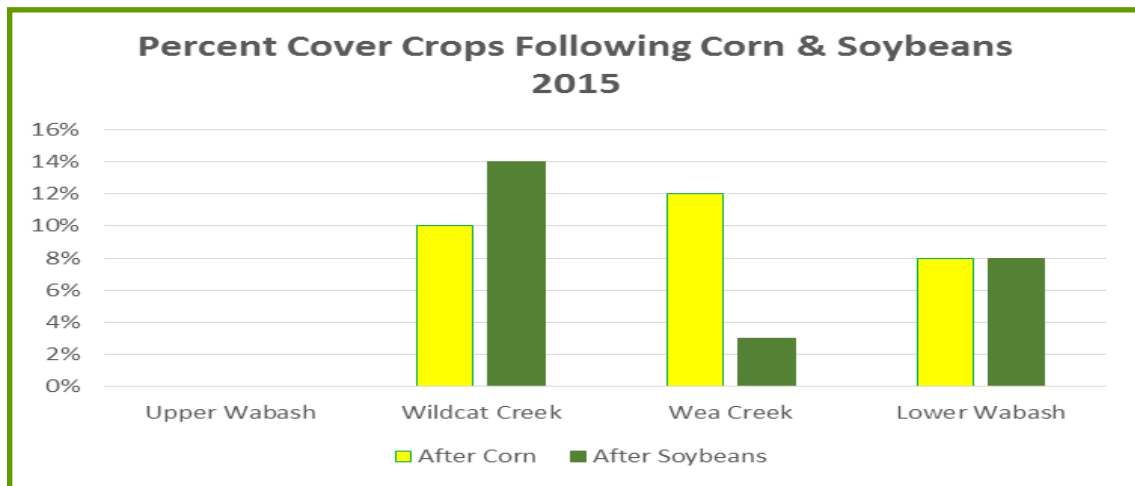


STABLE SOILS AND SOIL QUALITY

RESOURCE CONCERN — SOIL EROSION & SEDIMENTATION

Our Goal: Cover crops shall be increased by 3,000 acres in Tippecanoe County by 2020. **What we've accomplished...**

- Conducted annual cover crop transect
- 6,829 acres of cover crops planted in 2015
- Hosted a bi-annual conservation system workshop “Emerging Ag Technologies” with a focus on no-till in partnership with Greater Wabash River RC&D
- Conducted ongoing site visits with landowners promoting conservation systems
- Promotion of use of cover crops as part of conservation cropping system through website and social media
- Promotion of cover crops and soil health at :
 - Little Wea Creek “MRBI and Pie” outreach meeting (MRBI - Mississippi River Basin Initiative)
 - 4-H Fair “Soil Health” display
 - Women Caring for the Land event



STABLE SOILS AND SOIL QUALITY

RESOURCE CONCERN — SOIL EROSION & SEDIMENTATION

Our Goal: Identify fifty (50) erosive areas for stabilization by 2020. **What we've accomplished...**

- *Conducted 12 site visits with landowners to discuss soil stabilization options*
- *Distributed “Residential Guide for Soils, Drainage & Erosion Control” that highlights streambank stabilization and other conservation best management practices*



Streambank Erosion

RESOURCE CONCERN — SOIL QUALITY AND RESILIENCE

Our Goal: One hundred twenty five landowners will be educated to improve soil quality and resilience by 2020. **What we've accomplished...**

- *Promotion of the importance of soil health and conservation cropping systems through website and social media*
- *Promotion of cover crops and soil health at :*
 - *Little Wea Creek “MRBI and Pie” outreach meeting (MRBI - Mississippi River Basin Initiative) - 15 landowners*
 - *4-H Fair “Soil Health” display –1000 landowners (general public)*
 - *Women Caring for the Land event - 12 landowners*



Tippecanoe County 4-H Fair



Women Caring for the Land

CLEAN STREAMS AND WATER RESOURCES

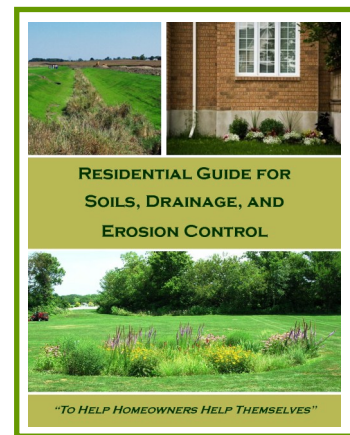
RESOURCE CONCERN — EXCESS CHEMICALS, NUTRIENTS, PATHOGENS & SEDIMENTATION

Our Goal: One hundred twenty five acres of buffers will be installed by 2020.
What we've accomplished...

- 16 acres installed in 2015
- Promoted installation of buffers as part of Mississippi River Basin Initiative outreach meeting “MRBI and Pie”

Our Goal: Fifty (50) landowners will be educated on streambank stabilization by 2020. **What we've accomplished...**

- Conducted 8 site visits with landowners, primarily along the Wildcat Creek, to discuss streambank stabilization options
- Distributed “Residential Guide for Soils, Drainage & Erosion Control” that highlights streambank stabilization and other conservation best management practices



Our Goal: Twenty (20) Landowners who are located in high manure application areas will be educated on best management practices by 2020. **What we've accomplished...**

- Provided educational materials and information to 3 landowners in high manure application areas in 2015.

Our Goal: Two hundred (200) Landowners will be educated on best management practices to address excess chemicals, nutrients, pathogens and sedimentation by 2020. **What we've accomplished...**

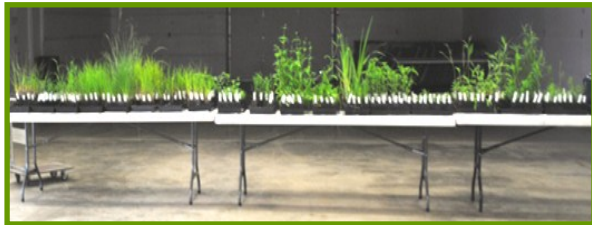
- Promotion of best management practices to address excess chemicals, nutrients, pathogens and sediment at:
 - Little Wea Creek “MRBI and Pie” outreach meeting (MRBI - Mississippi River Basin Initiative) - 15 landowners
 - 4-H Fair “Soil Health” display –1000 landowners (general public)
 - Women Caring for the Land event - 12 landowners

CLEAN STREAMS AND WATER RESOURCES

RESOURCE CONCERN — STORMWATER RUNOFF

Our Goal: Participate in four (4) community events to promote best management practices to reduce stormwater runoff by 2020. **What we've accomplished...**

- *Conducted Spring Native Plant Sale*
- *Conducted Fall Native Tree and Shrub Sale*
- *Promotion and distribution of Residential Guide for Soils, Drainage, and Erosion Control at Riverfest and 4-H Fair*



Spring Plant Sale



Fall Tree & Shrub Sale

Cardinal Flower

Lobelia cardinalis

Communities: Bioretention, Sedge Meadow, Wet Woods

Sun: sun to shade

Height: 1 – 3 ft.

Color: Red

Flower Season: Aug - Sep

Notes: Attracts hummingbirds and other pollinators. Requires moist soil.



Allegheny Serviceberry

Amelanchier laevis

Height: 15-35'

Spread: 15-25'

Sun: Full sun to part shade

Site conditions: moist, well-drained soils

Notes:

- Tolerates a variety of soil types
- Small, multi-trunked understory tree
- White flowers in spring
- Edible, dark purple berries (Juneberry)
- Foliage is bronze-purple in spring, dark green in summer and red-orange in fall
- Berries are food source for birds
- Sensitive to drought



Lance-Leaf Coreopsis

Coreopsis lanceolata

Communities: Dry Prairie

Sun: Sun

Height: 1 - 2 ft.

Color: Yellow

Flower Season: May - Jun

Notes: Drought-tolerant. Deadheading spent flowers encourages additional blooms. Self seeds.



Flowering Dogwood

Cornus florida

Height: 15-30'

Spread: 15-30'

Sun: full sun to part shade, shade-tolerant

Site conditions: moist to well-drained

Notes:

- Showy flowers in spring
- Red fall color
- Red berries eaten by birds
- Short trunk and full, rounded crown
- Nearly horizontal branches

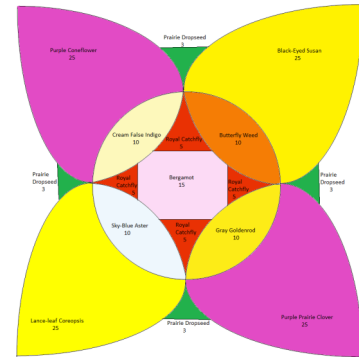


SUSTAINABLE COMMUNITIES

RESOURCE CONCERN - WILDLIFE HABITAT LOSS, DEGRADATION & FRAGMENTATION

Our Goal: Three hundred twenty five (325) acres of wildlife and pollinator habitat will be installed in Tippecanoe County by 2020. **What we've accomplished...**

- Installed 62 acres of wildlife and pollinator habitat
- Promoted native pollinators and habitat creation at Tippecanoe County Home and Garden Show, Women Caring for the Land event and Outdoor Explore! Event
- Supported Million Pollinator Garden Challenge through promotion and sale of native plants
- Developed pollinator garden at Cole Elementary School Outdoor Learning Center



Cole Pollinator Garden Plan



Butterfly Shaped Pollinator Garden @ Cole Elementary Outdoor Learning Center - From Start to Finish

RESOURCE CONCERN - INVASIVE SPECIES

Our Goal: Three hundred (300) landowners will be educated about the negative impacts of invasive species by 2020. **What we've accomplished...**

- Discussed invasive species with 15 landowners
- Conducted five invasive species site visits
- Three landowners enrolled in the Environmental Quality Incentive Program (EQIP) to address invasive species
- Indiana Master Naturalist Invasive Species Program -10 participants
- Outreach at Greater Lafayette Home and Garden Show - 250 participants
- Outreach at Outdoor Explore! Event—50 participants
- Outreach at Riverfest—200 participants
- Website/social media outreach

2015 SPECIAL EVENTS AND PROGRAMS

“AT A GLANCE”

ADULT CONSERVATION FIELD DAYS, WORKSHOPS, AND EVENTS

TWELVE (12) EVENTS: APPROXIMATELY 1900 PARTICIPANTS

- Aldo Leopold “Green Fire” Film Screening (40)
- Annual Meeting (60)
- Home & Garden Show (250)
- Spring Sampling Blitz (100)
- SHT 101 Hoop House Workshop (20)
- Riverfest (200)
- 4-H Fair (1000)
- Emerging Ag Technology Workshop (50)
- Fall Sampling Blitz (100)
- Indiana Master Naturalist Program (10)
- Outdoor Explore (50)
- MRBI & Pie (15)



YOUTH CONSERVATION EDUCATION PROGRAMS, PRESENTATIONS AND EVENTS

SEVEN (7) EVENTS: APPROXIMATELY 1200 PARTICIPANTS



Wonders on the Wabash

- 4-H Soil & Water Program (5)
- Ag Days (500)
- Lilly Nature Field Day (60)
- Wonders On the Wabash Rafting Event (80)
- Make A Splash (500)
- Outdoor Explore (20)

EQUIPMENT RENTAL - NO-TILL DRILLS, HAND SEEDERS, AND BACKPACK SPRAYERS

TWENTY SIX (26) RENTALS

SALE ITEMS - CONTAINER TREES, NATIVE PLANT PLUGS AND SEEDS, FLAGS, PLAT BOOKS AND “AN INDIANA LANDOWNER’S GUIDE TO NATIVE PRAIRIE PLANTS” BOOKS
ONE HUNDRED TWENTY ONE (121) SALES

FIFTY (50) GIVEAWAY SEED PACKETS (MILKWEED & NATIVE WILDFLOWERS)

APPROXIMATELY 3200 FACE-TO-FACE EDUCATION, IN-OFFICE, AND OUTREACH CONTACTS. THESE NUMBERS DO NOT INCLUDE SOCIAL MEDIA OUTREACH.

2015 ANNUAL MEETING MINUTES

February 25, 2015

The Tippecanoe County Soil and Water Conservation District Annual Meeting was held on Wednesday, February 25, 2015 at the Wright Forestry Center, 1007 North 725 West, West Lafayette, Indiana. Supervisor, Krista Ziller introduced herself and shared with those in attendance that tonight we are celebrating the 75th Anniversary of the creation of the Tippecanoe County Soil and Water Conservation District. She also shared that as part of that celebration, there were many who attended the afternoon screening of “Green Fire - Aldo Leopold and a Land Ethic for our Time” at the event site.

The meeting was then called to order at 6:45 p.m. by Ziller. Participants were provided information on the meeting’s agenda, and supervisor and staff introductions were made. Following introductions, Ziller recommended that in the interest of time, the actual reading of the 2014 Annual Meeting Minutes and Financial Report be foregone and requested a motion to accept both as presented. Said motion was made and seconded, carrying unanimously. At this time, the Election Committee was recognized along with elected supervisor nominee, Curt Vanderkleed. Vanderkleed provided information about his background and continued interest in conservation. Ziller presided over the supervisor election calling for nominations from the floor. A motion was made and seconded that nominations be closed, carrying unanimously. With only one nominee, a written ballot is not required. By a simple show of hands with the majority voting in favor of Curt Vanderkleed’s nomination, he was duly elected for a second term, expiring in 2018. Nola Gentry of the Indiana State Soil Conservation Board then came forward to assist with swearing in Curt Vanderkleed as a Soil and Water Conservation District official.

SWCD traditional conservation awards were then presented, beginning with the 2014 River Friendly Farmer award being presented to Vince Winkler and Family. Lenny Farlee received the 2014 Friend of Conservation award, and the 2014 Conservation Farmer of the Year Award was presented to Jack Lahrman who was unable to attend. Finally, the Conservation Lifetime Achievement Award for 2014 was next presented to Nola Gentry.

Following the awards, Buddy Huffaker, Executive Director of the Aldo Leopold Foundation, was introduced and presented a 30 minute “A Land Ethic for Our Time” presentation. At the conclusion of the presentation and with no further business at hand, Ziller called for a motion to adjourn. A motion was made, seconded and carried unanimously, and the meeting was adjourned at 8:15 p.m.

Meeting attendance – 53

Minutes recorded by Chris Remley.

ANNUAL FINANCIAL REPORT

January 1, 2015 through December 31, 2015

Balance Brought Forward	28,060.36
RECEIPTS	
State for District Operations	10,000.00
County for District Operations	15,000.00
Total Intergovernmental Receipts	25,000.00
Equipment Rental & Farm Income	3,157.50
Donations & Memberships	5,045.33
Total Charges for Services	8,202.83
Annual Meeting Income	440.00
Reimbursements & Refunds	1,246.78
Sales Income	8,287.63
Other Miscellaneous Revenue - Sales Tax	577.78
Total Miscellaneous Revenue	10,552.19
Sub-Total (before investment activity)	43,755.02
Sale of Investments (CDs, saving accounts, transfers)	5,000.00
TOTAL (balance forward + receipts + investments)	76,815.38
DISBURSEMENTS	
Capital Outlays (Equipment)	3,220.88
Annual Meeting Expenses	2,303.15
Bonding and Liability Insurance	2,002.34
Conservation Education Programs	10,159.06
Dues & Subscriptions	3,775.00
Office Supplies	659.81
Other Services & Charges	743.00
Postage & Delivery Expenses	215.99
Printing/Copying Expense	682.83
Rent	2,960.00
Repair Expenses	458.39
Sales Tax Paid to IN Dept. of Revenue	539.21
Supplies for Resale	5,974.49
Telephone or Other Utilities	1,279.78
Travel/Lodging/Mileage/Registration/Meals	1,846.94
Other Disbursements - Advertising & Marketing	3,595.64
Other Disbursements - Awards	368.59
Other Disbursements - Training	2,191.74
Other Disbursements - KSB Grant Reimbursement	5,000.00
Total General Government Disbursements	47,976.84
Sub-Total (before investment activity)	47,976.84
Purchase of Investments (CDs saving accounts, transfers)	\$0.00
TOTAL DISBURSEMENTS (disbursements + investments)	47,976.84
BALANCE AT DECEMBER 31	28,838.54
CLAIMS PAID BY COUNTY	
Salaries + Fringe	165,702.01
Other	0.00
INVESTMENT INVENTORY	
Beginning Investments	20,012.94
Ending Investments	15,020.75
Change (+/-)	-4,992.19
CASH BOXES	
Petty Cash	300.00
Cash Change	25.00

TIPPECANOE COUNTY TECHNICAL ASSISTANCE

*Summary of Conservation Practices Provided by USDA Natural Resources Conservation Service
Fiscal Year 2015 ~ 10/01/14 through 09/30/15*

Summary Conservation Practices	Planned	Applied
Brush Management (314) (ac)	350	50
Conservation Cover (327) (ac)	64	5
Conservation Crop Rotation (328) (ac)	2,781	3,257
Cover Crop (340) (ac)	681	6,829
Critical Area Planting (342) (ac)	7	11
Denitrifying Bioreactor (747) (ac)	1	0
Drainage Water Management (554) (ac)	18	0
Drainage Water Management Plan Written (130) no	1	1
Early Successional Habitat Development/Management (647) (ac)	72	70
Fence (382) (ft)	1,200	1,350
Field Border (386) (ac)	31	18
Forage and Biomass Planting (512) (ac)	18	83
Forage Harvest Management (511) (ac)	76	76
Forest Stand Improvement (666) (ac)	25	25
Grassed Waterway (412) (ac)	37	14
Integrated Pest Management (IPM) (595) (ac)	1,259	258
Lined Waterway or Outlet (468) (ft)	60	20
Mulching (484) (ac)	8	8
Nutrient Management (590) (ac)	3,034	903
Prescribed Grazing (528) (ac)	8	8
Residue and Tillage Management, No-Till (329) (ac)	250	995
Residue and Tillage Management, Reduced Till (345) (ac)	2,062	621
Restoration and Management of Rare & Declining Habitats (643) (ac)	4	4
Riparian Forest Buffer (391) (ac)	5	5
Seasonal High Tunnel System for Crops (798) (sq ft)	3,210	1,050
Subsurface Drain (606) (ft)	14,300	14,300
Tree/Shrub Establishment (612) (ac)	1	16
Underground Outlet (620) (ft)	60	20
Upland Wildlife Habitat Management (645) (ac)	12	12
Wetland Restoration (657) (ac)	25	25
Wetland Wildlife Habitat Management (644) (ac)	32	32
Windbreak/Shelterbelt Establishment (380) (ft)	2,790	0

SAVE THE DATE!

COVER CROP WORKSHOP AND ROOT DIG



being held at Geswein Farms

7504 South 625 West, West Point, IN

For more information, please contact us 474-9992, Ext. 3

WEDNESDAY, MARCH 30, 2016

2016 SPRING PLANT SALE ORDER FORM

NAME: _____
 ADDRESS: _____
 CITY, ST, ZIP: _____
 PHONE: _____
 EMAIL: _____

REMIT ORDER & PAYMENT TO:
 Tippecanoe SWCD
 1812 Troxel Drive, Suite C3
 Lafayette, IN 47909-7367
www.tippecanoe-county-swcd.org

Botanical Name	Common Name	Flower Season	Mature Height	Exposure	Quantity	Price	Total \$\$
FORBS (WILDFLOWERS): 2-3/8" pot							
<i>Asclepias incarnata</i>	Marsh Milkweed	July-Aug	3 - 4 ft.	sun	x	2.50	\$ -
<i>Asclepias sullivantii</i>	Sullivant's Milkweed	July-Aug	3 - 4 ft.	sun	x	2.50	\$ -
<i>Asclepias tuberosa</i>	Butterfly Weed	Jun-Aug	1 - 2 ft.	sun	x	2.50	\$ -
<i>Aster azureus</i>	Sky Blue Aster	Sept	1 - 2 ft.	sun-psun	x	2.50	\$ -
<i>Aster novae-angliae</i>	New England Aster	Sep-Oct	3 - 5 ft.	sun	x	2.50	\$ -
<i>Baptisia australis</i>	Blue False Indigo	May-Jun	2 - 4 ft.	sun-psun	x	2.50	\$ -
<i>Chelone obliqua</i>	Pink Turtlehead	Aug-Sep	2 - 4 ft.	pshade	x	2.50	\$ -
<i>Coreopsis lanceolata</i>	Lance-Leaf Coreopsis	May-Jun	1 - 2 ft.	sun	x	2.50	\$ -
<i>Echinacea purpurea</i>	Purple Coneflower	Jun-Aug	3 - 4 ft.	sun-psun	x	2.50	\$ -
<i>Eupatorium purpureum</i>	Sweet Joe Pye Weed	July-Aug	4 - 6 ft.	psun-shade	x	2.50	\$ -
<i>Filipendula rubra</i>	Queen of the Prairie	Jun-Jul	4 - 6 ft.	pshade-sun	x	2.50	\$ -
<i>Gentiana andrewsii</i>	Bottle Gentian	Sep-Oct	1 - 2 ft.	pshade-sun	x	2.50	\$ -
<i>Geranium maculatum</i>	Wild Geranium	Apr-May	1 ft.	psun-shade	x	2.50	\$ -
<i>Hibiscus palustris</i>	Swamp Rose Mallow	July-Sept	3 - 6 ft.	sun	x	2.50	\$ -
<i>Iris versicolor</i>	Wild Iris	May-Jun	2 - 3 ft.	sun-psun	x	2.50	\$ -
<i>Liatris spicata</i>	Dense Blazing Star	Jul-Aug	3 - 5 ft.	sun	x	2.50	\$ -
<i>Lobelia cardinalis</i>	Cardinal Flower	Aug-Sep	1 - 3 ft.	sun-shade	x	2.50	\$ -
<i>Lobelia siphilitica</i>	Great Blue Lobelia	Aug-Sep	1 - 3 ft.	sun-shade	x	2.50	\$ -
<i>Mertensia virginica</i>	Virginia Bluebell	Mar-Apr	1 - 2 ft.	pshade-shade	x	2.50	\$ -
<i>Monarda fistulosa</i>	Bergamot	Jul-Aug	2 - 4 ft.	pshade-sun	x	2.50	\$ -
<i>Oenothera pilosella</i>	Prairie Sundrops	June-July	1 ft.	sun	x	2.50	\$ -
<i>Penstemon calycosus</i>	Smooth Penstemon	May-Jun	2 - 3 ft.	sun-shade	x	2.50	\$ -
<i>Physostegia virginiana</i>	Obedient Plant	Aug-Sep	2 - 4 ft.	sun	x	2.50	\$ -
<i>Pycnanthemum tenuifolium</i>	Narrow-Leaf Mountain Mint	July-Aug	1 - 2 ft.	sun	x	2.50	\$ -
<i>Rudbeckia fulgida speciosa</i>	Orange Coneflower	Aug-Sep	2 - 3 ft.	sun	x	2.50	\$ -
<i>Scutellaria incana</i>	Downy Scuticap	Jun-Jul	2 ft.	psun-shade	x	2.50	\$ -
<i>Silene regia</i>	Royal Catchfly	Jul-Aug	2 - 4 ft.	pshade-sun	x	2.50	\$ -
<i>Stylophorum diphyllum</i>	Celandine Poppy	Apr-May	1 - 2 ft.	shade	x	2.50	\$ -
<i>Tradescantia ohlensis</i>	Ohio Spiderwort	June-July	2 - 3 ft.	sun	x	2.50	\$ -
<i>Veronicastrum virginicum</i>	Culvers Root	July-Aug	3 - 6 ft.	sun-psun	x	2.50	\$ -
GRAMINOIDS (GRASSES & SEDGES): 2-3/8" pot							
<i>Andropogon gerardii</i>	Big Bluestem	Jul-Oct	4 - 8 ft.	sun	x	2.50	\$ -
<i>Carex radiata</i>	Straight-Styled Wood Sedge	Apr-May	1 ft.	shade	x	2.50	\$ -
<i>Chasmanthium latifolium</i>	Northern Sea Oats	July-Aug	2 - 3 ft.	psun-shade	x	2.50	\$ -
<i>Schizachyrium scoparium</i>	Little Bluestem	Aug-Sep	2 - 3 ft.	sun	x	2.50	\$ -
<i>Sporobolus heterolepis</i>	Prairie Dropseed	Jul-Sep	1 - 3 ft.	sun	x	2.50	\$ -
PRESELECTED MIXES (INCLUDES FORBS & GRAMINOIDS): 2-3/8" pot (see descriptions)							
Pollinator Mix (34 plants) Nine species of wildflowers & one grass species, adapted to full sun.					x	80.00	\$ -
Rain Garden Mix (34 plants) Eight species of wildflowers & two grass/sedge species, adapted to wet conditions.					x	80.00	\$ -
Shade/Woodland Mix (34 plants) Eight species of wildflowers & two species of grass/sedge, shade tolerant.					x	80.00	\$ -
TOTAL							
7% SALES TAX							
TOTAL DUE							

Please make checks payable to: Tippecanoe SWCD

PREORDER PICK-UP: Friday, April 29, 2016 from 5:00 - 8:00 pm
 Saturday, April 30, 2016 from 9:00 am - 12:00 pm

PUBLIC SALE: Saturday, April 30, 2016 from 9:00 am - 3:00 pm

For a complete order form including plant descriptions, please visit our website at www.tippecanoe-county-swcd.org or call our office. Plant photos can also be found on our website. THINK SPRING!!!



2015 FRIEND OF CONSERVATION AWARD WINNERS TIPPECANOE COUNTY PARK & RECREATION DEPARTMENT AND TIPPECANOE COUNTY PARTNERSHIP FOR WATER QUALITY



The Friend of Conservation award promotes & recognizes conservation efforts by community or civic leaders, homeowners, businesses, volunteers, teachers, students, and student organizations.

Our Friend of Conservation Award winners this year have made a positive contribution to soil and water conservation and we are pleased to recognize them for the Wonders on the Wabash education initiative.

For the past two years, sixth grade students from Faith Christian School learned about the natural history of the Wabash River and local water quality issues as they embarked on a river raft trip from Mascouten Park to Fort Ouiatenon. Approximately 50 students and dozens of volunteers learned about Indiana's most famous river, the animals who call it home, and what they can do to keep it clean. They learned about watersheds, the relationship between macroinvertebrates and water quality, they participated in hands-on water quality testing, saw fish from the Wabash River up close and personal, and learned about the history of the river. Just a handful of the students and volunteers had ever been on the Wabash River, and as a result of the experience, now view it in a very different way.

Mary Cutler of the Tippecanoe County Park and Recreation Department and Monica Christopher of the Tippecanoe County Partnership for Water Quality recognized the value of combining resources and working closely with each other and the Soil and Water Conservation District. The end result is an amazing conservation education program that could not have been accomplished by one agency alone, that fulfilled each agency's mission, and gave the students of Tippecanoe County an experience they'll never forget. Many thanks to Mary and Monica. Both of these individuals and organizations are assets to Tippecanoe County, and are indeed, Friends of Conservation!

2014 RIVER FRIENDLY FARMER - MADDUX FARMS, INC.

The River Friendly Farmer (RFF) statewide initiative recognizes farmers, who through good production management practices helps keep Indiana's rivers, lakes and streams clean, and Maddux Farms, Inc. was selected as Tippecanoe County's award recipient.

Our award for the Tippecanoe Country River Friendly Farmer of the Year goes to Maddux Farms Incorporated. Located in the southwestern portion on the county, Maddux Farms consists of Jeff and Areaka Maddux, and their daughter and son-in-law Evan and Katie Cox. Their cropping system includes the use of no-till, nutrient management, and cover crops. They utilize grassed waterways, filter strips and a wetland to help protect water quality and to provide wildlife habitat. Maddux Farms Inc. is viewed as a "generational farm," where resources are cared for in order to provide a sustainable farm for future generations. Congratulations to the Maddux family in being recognized as the 2016 River Friendly Farmer of the Year.





TIPPECANOE COUNTY SOIL & WATER CONSERVATION DISTRICT
1812 TROXEL DRIVE, SUITE C3
LAFAYETTE, IN 47909-7367
PH: 765-474-9992, EXT. 3
www.tippecanoecountyswcd.org

"To waste, to destroy, our natural resources, to skin and exhaust the land instead of using it so as to increase it's usefulness, will result in undermining in the days of our children the very prosperity which we ought by right to hand down to them amplified and developed." - Theodore Roosevelt



Outdoor Explore! Participants

All programs and services of the Soil and Water Conservation District are offered on a nondiscriminatory basis without regard to race, color, age, gender, national origin, religion, marital status, or handicap.