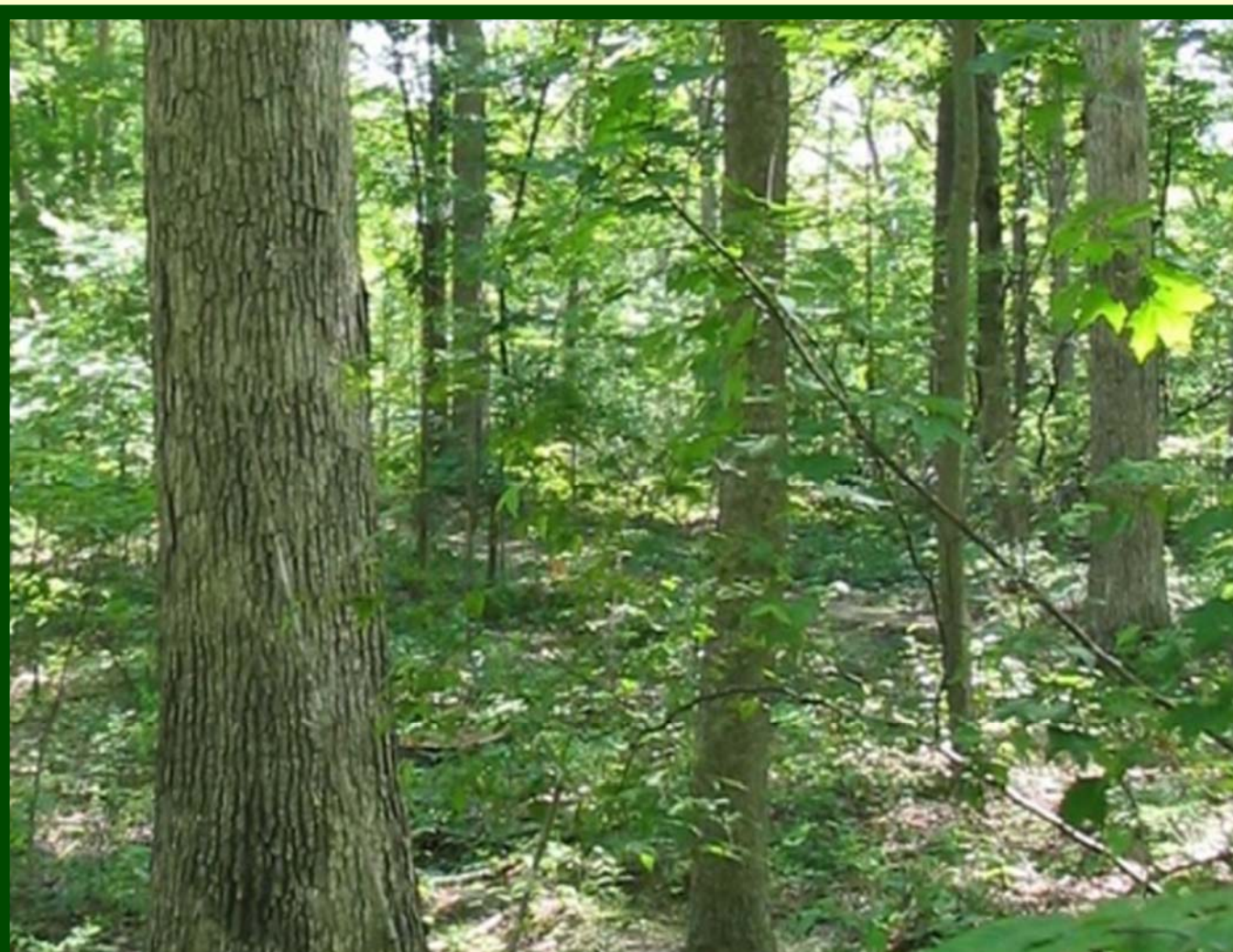


TIPPECANOE SOIL & WATER CONSERVATION DISTRICT



2016 ANNUAL REPORT

The Tippecanoe County Soil and Water Conservation District is committed to provide quality technical, educational, and informational resources for the community through leadership, service, and citizen involvement to foster natural resource conservation and environmental stewardship.

SUPERVISORS AND STAFF

The official governing body of a Soil & Water Conservation District (SWCD) consists of five supervisors. Three supervisors are elected (one each year for a three year term) at a district annual meeting. Two are appointed (also for staggered three year terms) by the State Soil Conservation Board based on recommendations of the current supervisors in the district. As a result, the selection of all five supervisors is based on local input and through election of the local people they serve.

SWCD Board of Supervisors:

Josh Cox, Chairman ~ Elected - Term Expires 2019
Curt Vanderkleed, Vice Chairman ~ Elected -Term Expires 2018
Dan Smith, Supervisor ~ Appointed - Term Expires 2017
Roger Strasburger, Supervisor ~ Elected -Term Expires 2017
Krista Ziller, Supervisor ~ Appointed - Term Expires 2018

SWCD Staff:

Angie Miller, Rural Conservationist
Chris Remley, District Administrator

Partnership Staff:

Mark Eastman, District Conservationist
USDA Natural Resources Conservation Service

Katie Fagan, Soil Conservationist
USDA Natural Resources Conservation Service



2016 SWCD Board of Supervisors

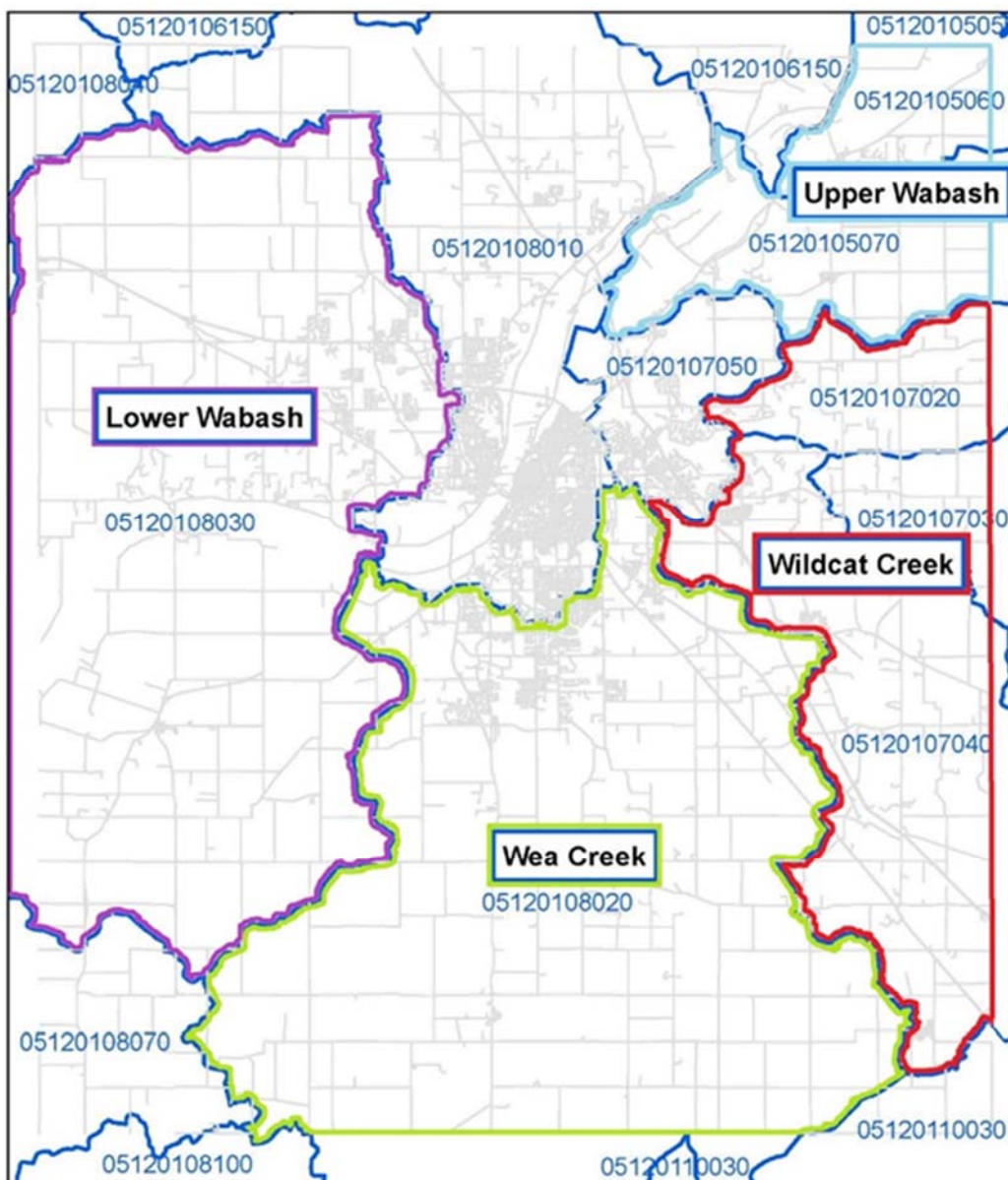
We are pleased to reflect on our accomplishments of 2016 that follow and hope that you enjoy your fellowship with others who share our commitment to Tippecanoe County's natural resources. These resources sustain our economy and provide the quality of life we seek in clean air, water and soil.

WHAT IS A WATERSHED?

A watershed is an area of land that collects and drains to one location, such as a river. When rain falls in a watershed, water travels toward the lowest point. Watersheds vary in size and they are identified by numbers called Hydrologic Unit Codes (HUCs).

No matter the size, watersheds are important because they supply us with water that we rely on for survival. Lakes, rivers, and wetlands provide habitat for countless species of animals, insects, and plants. Human activities within a watershed can ultimately impact the water resources of the area.

Tippecanoe County HUC 11 Watersheds

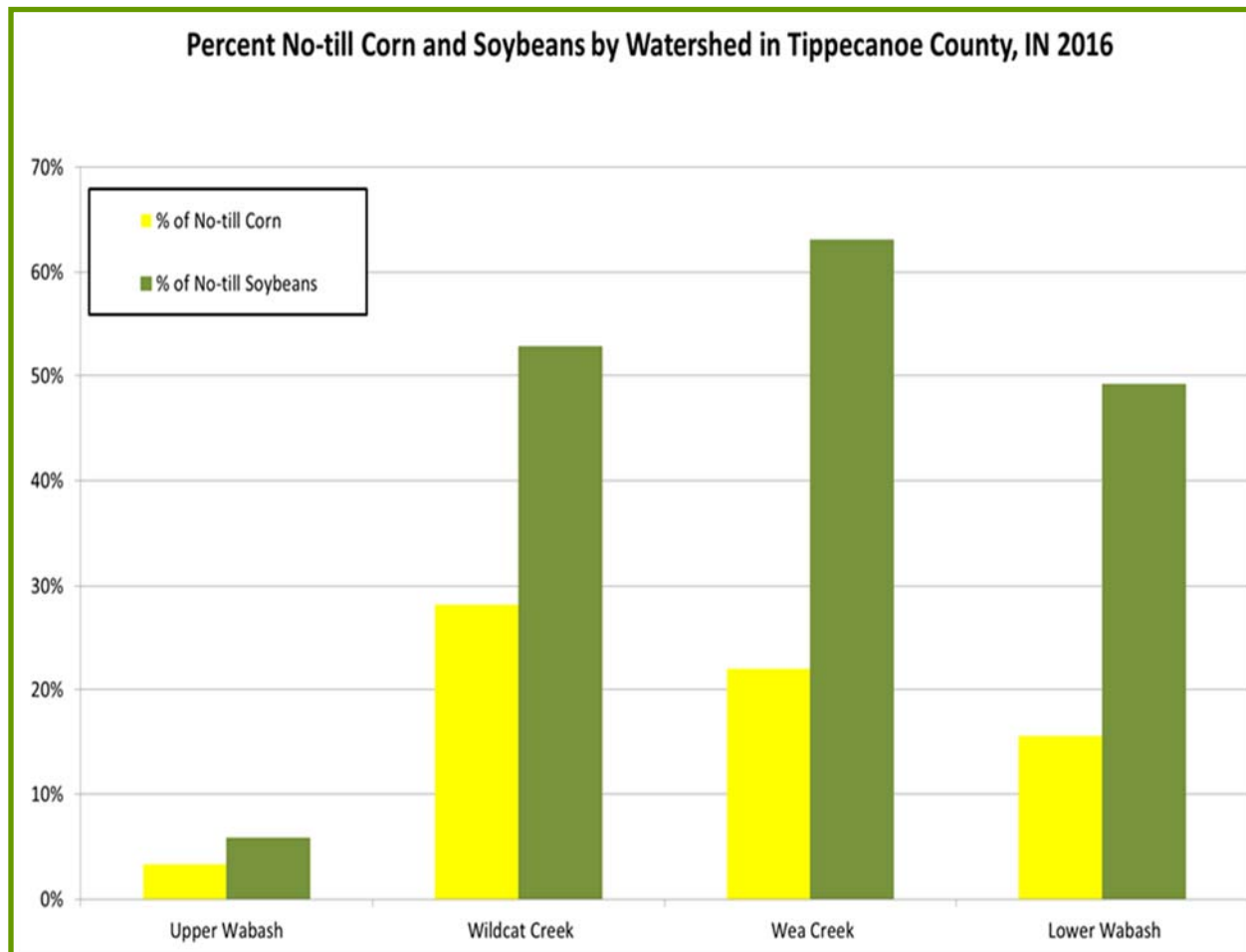


STABLE SOILS AND SOIL QUALITY

RESOURCE CONCERN — SOIL EROSION & SEDIMENTATION

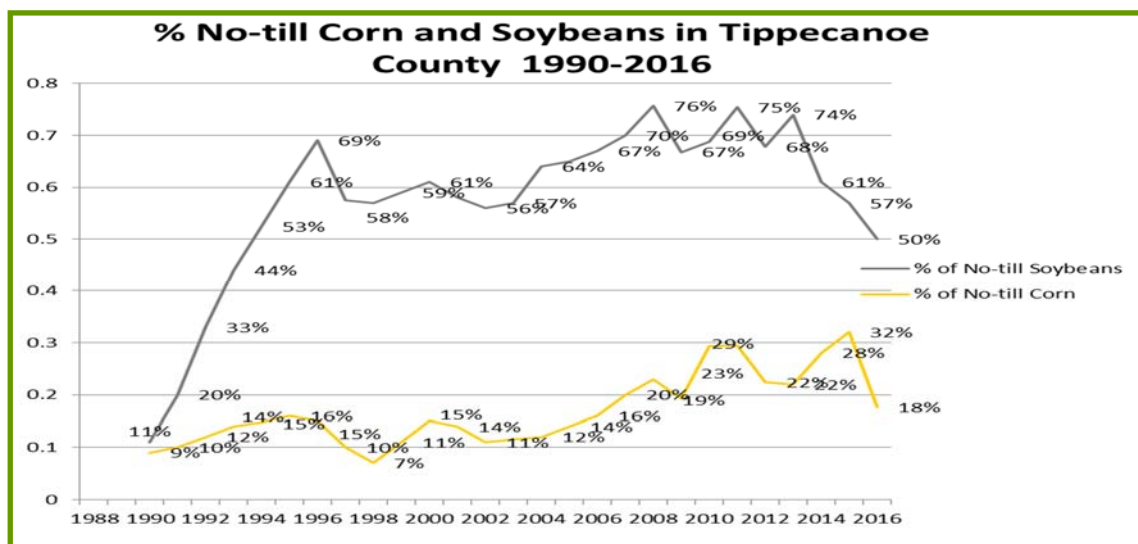
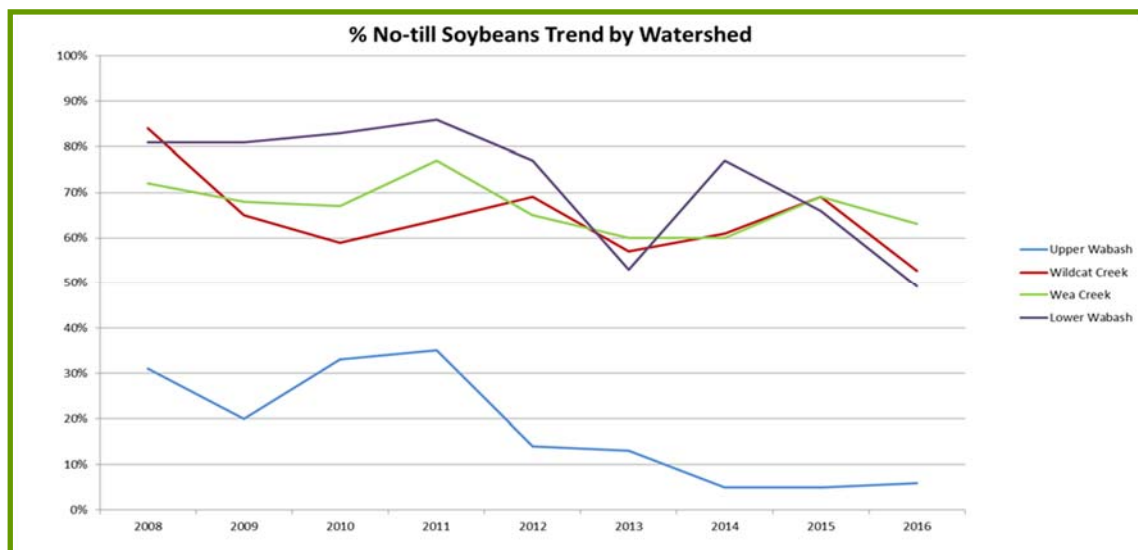
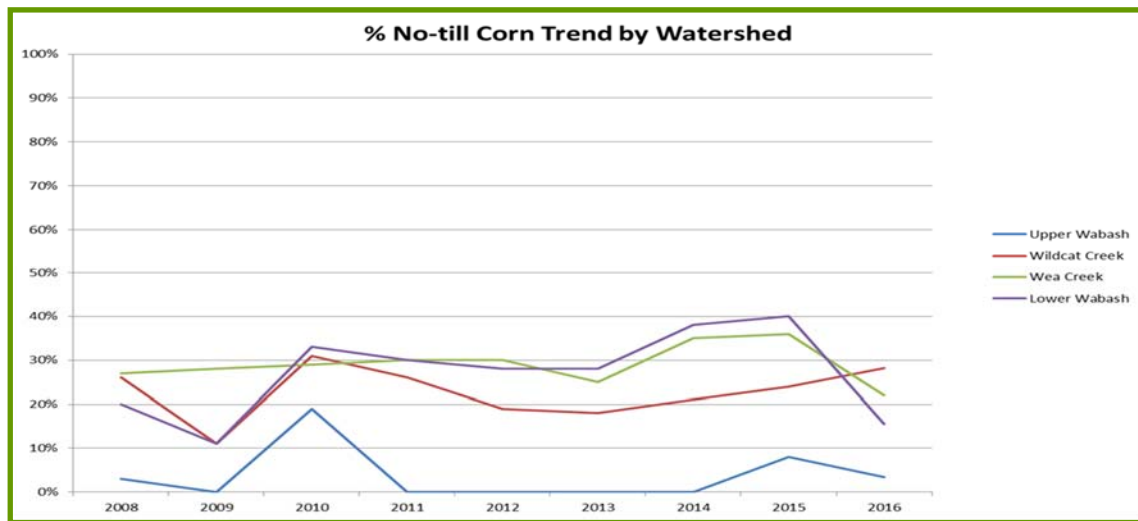
Our Goal: No till practices shall be increased by 2,500 acres from 84,127 acres in 2014 to 86,627 acres in Tippecanoe County by 2020. **What we've accomplished...**

- *Performed annual tillage transect*
- *Conducted site visits with landowners promoting conservation systems on an ongoing basis*
- *Promotion of no-till as part of conservation cropping system through website and social media*
- *Promotion of no-till and soil health at :*
 - *Little Wea Creek “MRBI and Pie” outreach meeting (MRBI - Mississippi River Basin Initiative)*
 - *4-H Fair “Soil Health” display*
 - *Women Caring for the Land event*
 - *Cover Crop “Root Dig” event*



STABLE SOILS AND SOIL QUALITY

ADDITIONAL NO-TILL GRAPHS:

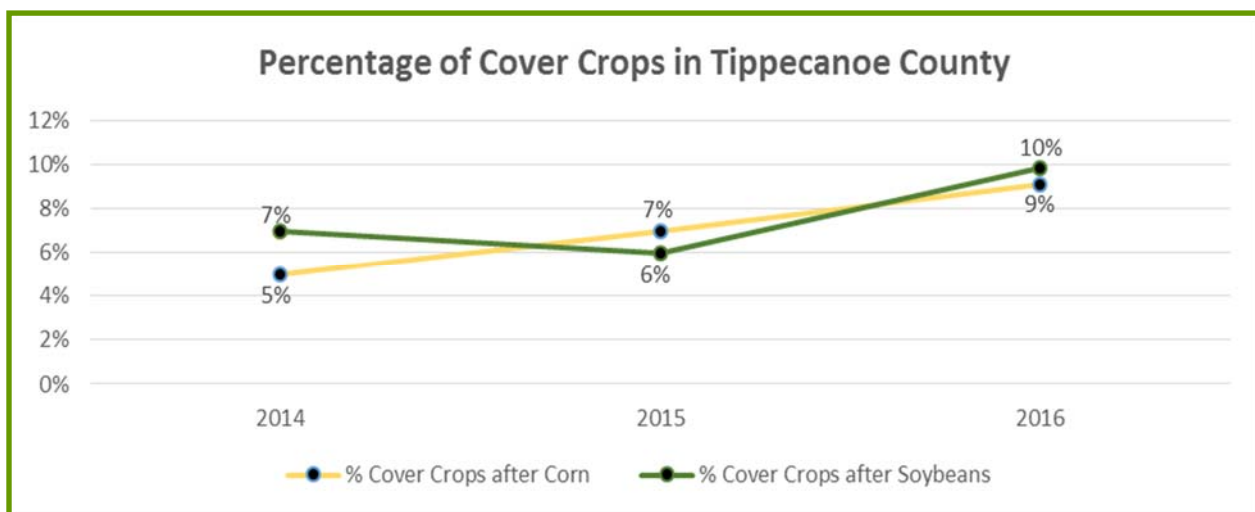
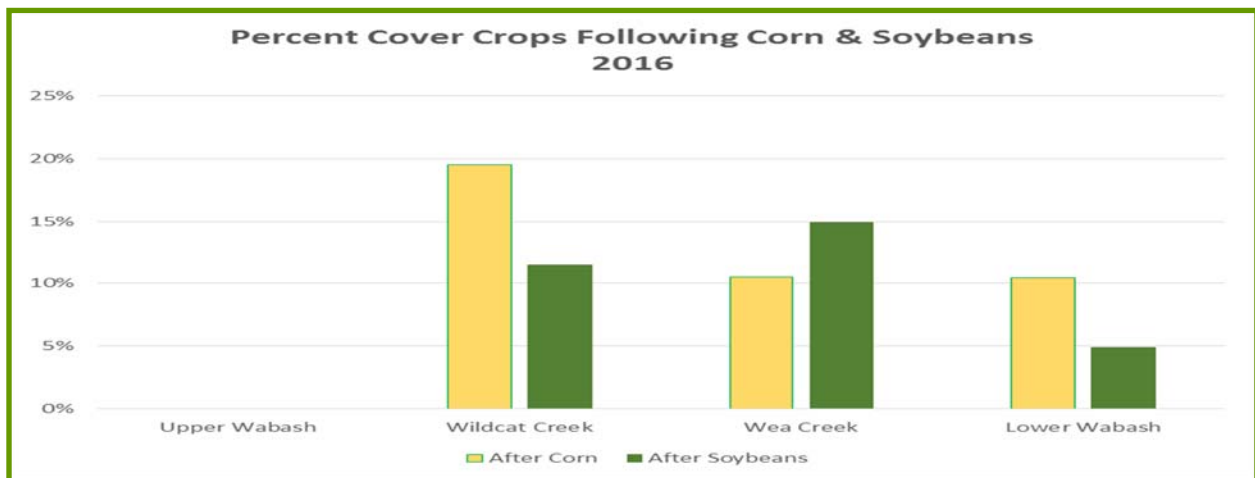


STABLE SOILS AND SOIL QUALITY

RESOURCE CONCERN — SOIL EROSION & SEDIMENTATION

Our Goal: Cover crops shall be increased by 3,000 acres from 11,523 acres in 2014 to 14,523 acres in Tippecanoe County by 2020. **What we've accomplished...**

- Conducted annual cover crop transect
- Conducted site visits with landowners promoting conservation systems on an ongoing basis
- Promotion of use of cover crops as part of conservation cropping system through website and social media
- Promotion of cover crops and soil health at :
 - Little Wea Creek “MRBI and Pie” outreach meeting (MRBI - Mississippi River Basin Initiative)
 - 4-H Fair “Soil Health” display
 - Women Caring for the Land event
 - Cover Crop “Root Dig” event



STABLE SOILS AND SOIL QUALITY

RESOURCE CONCERN — SOIL EROSION & SEDIMENTATION

Our Goal: Identify fifty (50) erosive areas for stabilization by 2020. **What we've accomplished...**

- *Conducted 12 site visits with landowners in 2015 and 15 site visits in 2016 to discuss soil stabilization options*
- *Distributed “Residential Guide for Soils, Drainage & Erosion Control” that highlights streambank stabilization and other conservation best management practices*



Streambank Erosion

RESOURCE CONCERN — SOIL QUALITY AND RESILIENCE

Our Goal: One hundred twenty five landowners will be educated to improve soil quality and resilience by 2020. **What we've accomplished...**

- *Promotion of the use of soil health as part of a conservation cropping system at :*
 - *Little Wea Creek “MRBI and Pie” outreach meeting (MRBI - Mississippi River Basin Initiative) - 15 landowners in 2015; 3 landowners in 2016*
 - *4-H Fair “Soil Health” display –1000 landowners (general public) annually*
 - *Women Caring for the Land event - 12 landowners in 2015; 8 landowners in 2016*
 - *Cover Crop “Root Dig” event - 20 landowners in 2016*
- *Promotion of the importance of soil health and conservation cropping systems through website and social media*



Cover Crop “Root Dig”



Women Caring for the Land

CLEAN STREAMS AND WATER RESOURCES

RESOURCE CONCERN — EXCESS CHEMICALS, NUTRIENTS, PATHOGENS & SEDIMENTATION

Our Goal: One hundred twenty five acres of buffers will be installed by 2020.
What we've accomplished...

- *16 acres installed in 2015; 22 acres installed in 2016*
- *Promoted installation of buffers as part of Mississippi River Basin Initiative outreach meeting “MRBI and Pie” and “Women’s Conservation Learning Circle*

Our Goal: Fifty (50) landowners will be educated on streambank stabilization by 2020. **What we've accomplished...**

- *Conducted 8 site visits with landowners, primarily along the Wildcat Creek, to discuss streambank stabilization options in 2015 and 8 additional site visits in 2016*
- *Distributed “Residential Guide for Soils, Drainage & Erosion Control” that highlights streambank stabilization and other conservation best management practices*

Our Goal: Twenty (20) Landowners who are located in high manure application areas will be educated on best management practices by 2020. **What we've accomplished...**

- *Provided educational materials and information to 3 landowners in high manure application areas in 2015 and an additional 4 landowners in 2016*

Our Goal: Two hundred (200) Landowners will be educated on best management practices to address excess chemicals, nutrients, pathogens and sedimentation by 2020. **What we've accomplished...**

- *Promotion of best management practices to address excess chemicals, nutrients, pathogens and sediment at:*
 - *Little Wea Creek “MRBI and Pie” outreach meeting (MRBI - Mississippi River Basin Initiative) - 15 landowners in 2015; 3 landowners in 2016*
 - *4-H Fair “Soil Health” display –1000 landowners (general public) annually*
 - *Women Caring for the Land event - 12 landowners in 2015; 8 landowners in 2016*
 - *Cover Crop “Root Dig - 20 landowners in 2016*

CLEAN STREAMS AND WATER RESOURCES

RESOURCE CONCERN — STORMWATER RUNOFF

Our Goal: Participate in four (4) community events to promote best management practices to reduce stormwater runoff by 2020. **What we've accomplished...**

- *Conducted Spring Native Plant Sale*
- *Conducted Fall Native Tree and Shrub Sale*
- *Promotion and distribution of Residential Guide for Soils, Drainage, and Erosion Control at Riverfest, 4-H Fair, and Outdoor Explore!*

Lance-Leaf Coreopsis
Coreopsis lanceolata

Communities: Dry Prairie

Sun: Sun

Height: 1 - 2 ft.

Color: Yellow

Flower Season: May - Jun

Notes: Drought-tolerant. Deadheading spent flowers encourages additional blooms. Self seeds.



Flowering Dogwood
Cornus florida

Height: 15-30'

Spread: 15-30'

Sun: full sun to part shade, shade-tolerant

Site conditions: moist to well-drained

Notes:

- Showy flowers in spring
- Red fall color
- Red berries eaten by birds
- Short trunk and full, rounded crown
- Nearly horizontal branches





Allegheny Serviceberry
Amelanchier laevis

Height: 15-35'

Spread: 15-25'

Sun: Full sun to part shade

Site conditions: moist, well-drained soils

Notes:

- Tolerates a variety of soil types
- Small, multi-trunked understory tree
- White flowers in spring
- Edible, dark purple berries (Juneberry)
- Foliage is bronze-purple in spring, dark green in summer and red-orange in fall
- Berries are food source for birds
- Sensitive to drought



Cardinal Flower
Lobelia cardinalis

Communities: Bioretention, Sedge Meadow, Wet Woods



Sun: sun to shade

Height: 1 - 3 ft.

Color: Red

Flower Season: Aug - Sep

Notes: Attracts hummingbirds and other pollinators. Requires moist soil.





SUSTAINABLE COMMUNITIES

RESOURCE CONCERN - WILDLIFE HABITAT LOSS, DEGRADATION & FRAGMENTATION

Our Goal: Three hundred twenty five (325) acres of wildlife and pollinator habitat will be installed in Tippecanoe County by 2020. **What we've accomplished...**

- *Installed 62 acres of wildlife and pollinator habitat in 2015; 296 acres in 2016*
- *Promoted native pollinators and habitat creation at Tippecanoe County Home and Garden Show, Women Caring for the Land event and Outdoor Explore! Event*
- *Supported Million Pollinator Garden Challenge through promotion and sale of native plants*
- *Developed pollinator garden at Cole Elementary School Outdoor Learning Center in 2015*
- *Developed pollinator garden at Battle Field Park in the town of Battle Ground in cooperation with Tippecanoe County Park & Recreation Department and Battle Ground Elementary School in 2016*



RESOURCE CONCERN - INVASIVE SPECIES

Our Goal: Three hundred (300) landowners will be educated about the negative impacts of invasive species by 2020. **What we've accomplished...**

- *Discussed invasive species with 15 landowners in 2015; 35 Landowners in 2016*
- *Conducted 5 invasive species site visits in 2015; 8 site visits in 2016*
- *3 landowners enrolled in the Environmental Quality Incentive Program (EQIP) to address invasive species in 2015; 4 Landowners in 2016*
- *Indiana Master Naturalist Invasive Species Program -10 participants in 2015*
- *Outreach at Greater Lafayette Home and Garden Show - 250 participants in 2015*
- *Outreach at Riverfest—200 participants in 2015*
- *Outreach at Outdoor Explore! Event—50 participants in 2015; 500 participants in 2016*
- *Website/social media outreach*

2016 SPECIAL EVENTS AND PROGRAMS

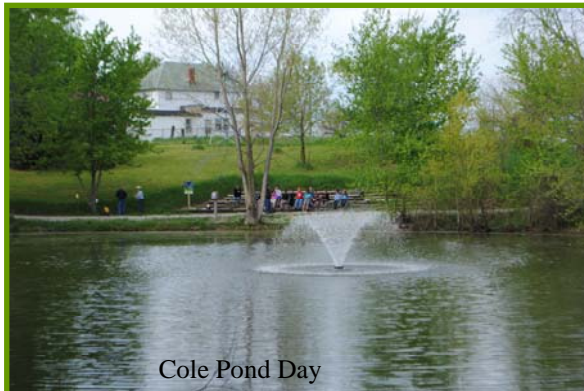
“AT A GLANCE”

TWELVE (12) ADULT CONSERVATION FIELD DAYS, WORKSHOPS, AND EVENTS IN 2015 WITH APPROXIMATELY 1900 PARTICIPANTS; NINE (9) IN 2016 WITH APPROXIMATELY 1800 PARTICIPANTS

- Annual Meeting (60)
- Cover Crop “Root Dig” (20)
- Spring Sampling Blitz (100)
- Outdoor Explore (200)
- 4-H Fair (1000)
- Women’s Caring for the Land (8)
- Fall Sampling Blitz (100)
- Power of Partnership River School (20)
- MRBI & Pie (3)



SEVEN (7) YOUTH CONSERVATION EDUCATION PROGRAMS, PRESENTATIONS AND EVENTS IN 2016 WITH APPROXIMATELY 1200 PARTICIPANTS; FIVE (5) IN 2016 WITH APPROXIMATELY 1500 PARTICIPANTS



- Ag Days (500)
- Cole Pond Day (60)
- Battlefield Pollinator Project (150)
- Outdoor Explore (300)
- Make A Splash (500)

***EQUIPMENT RENTAL - NO-TILL DRILLS, HAND SEEDERS, AND BACKPACK SPRAYERS
TWENTY SIX (26) RENTALS IN 2015; THIRTY SEVEN (37) IN 2016***

***SALE ITEMS - CONTAINER TREES, NATIVE PLANT PLUGS AND SEEDS, FLAGS, PLAT BOOKS AND “AN INDIANA LANDOWNER'S GUIDE TO NATIVE PRAIRIE PLANTS” BOOKS
ONE HUNDRED TWENTY ONE (121) SALES IN 2015; ONE HUNDRED SIXTY FIVE (165) IN 2016.***

FIFTY (50) GIVEAWAY SEED PACKETS (MILKWEED & NATIVE WILDFLOWERS) IN 2015 & FIFTY (50) IN 2016.

APPROXIMATELY 3200 FACE-TO-FACE EDUCATION, IN-OFFICE, AND OUTREACH CONTACTS IN 2015 AND 3600 IN 2016. THESE NUMBERS DO NOT INCLUDE SOCIAL MEDIA OUTREACH.

2016 ANNUAL MEETING MINUTES

March 15, 2016

The Tippecanoe County Soil and Water Conservation District Annual Meeting was held on Tuesday, March 15, 2016 at the Wright Forestry Center, 1007 North 725 West, West Lafayette, Indiana.

After dinner was served at 6:00 p.m., the meeting was called to order at 6:45 p.m. by SWCD Supervisor, Krista Ziller. Participants were provided information on the meeting's agenda, and supervisor and staff introductions were made. Following introductions, Ziller recommended that in the interest of time, the actual reading of the 2015 Annual Meeting Minutes and Financial Report be foregone and requested a motion to accept both as presented. Said motion was made by Nola Gentry and seconded by Joe Rund, carrying unanimously.

At this time, the Election Committee was recognized along with elected supervisor nominee, Josh Cox. Cox provided information about his background sharing his passion for conservation with those in attendance and expressed his continued interest in serving as a SWCD supervisor. Ziller presided over the supervisor election calling for nominations from the floor. A motion was made by Joe Rund and seconded by Micki Penrod that nominations be closed, carrying unanimously. With only one nominee, a written ballot was not required. By a simple show of hands with the majority voting in favor of Josh Cox's nomination, he was duly elected for a third term, expiring in 2019. Nola Gentry of the Indiana State Soil Conservation Board then came forward to assist with swearing in Josh Cox as a Soil and Water Conservation District official.

SWCD conservation awards were then presented, beginning with the 2015 River Friendly Farmer award being presented to the Maddux Family, accepted by Evan Cox. The Tippecanoe County Park and Recreation Department and the Tippecanoe County Partnership for Water Quality shared the 2015 Friend of Conservation award for their Wonders on the Wabash environmental education project. The awards were accepted by Mary Cutler on behalf of the Tippecanoe County Park and Recreation Department and Monica Christopher, Vanessa Rainwater, & Zach Beasley, representing the Tippecanoe County Partnership for Water Quality.

Following the awards, Tom Turpin, creator of Purdue University's Bug Bowl, was introduced and presented a 30 minute "Pollen's the Word, Spread it Around!" presentation. At the conclusion of the presentation and with no further business at hand, Ziller called for a motion to adjourn. A motion was made, seconded and carried unanimously, and the meeting was adjourned at 8:30 p.m.

Meeting attendance – 62

Minutes recorded by Chris Remley.

ANNUAL FINANCIAL REPORT

January 1, 2016 through December 31, 2016

| | |
|----------------------------------------------------------|---------------------|
| Balance Brought Forward | \$28,838.54 |
| RECEIPTS | |
| State for District Operations | 10,000.00 |
| County for District Operations | 15,000.00 |
| Federal and State Funds (not CWI) | 2,992.50 |
| Total Intergovernmental Receipts | 27,992.50 |
| Equipment Rental & Farm Income | 12,125.52 |
| Donations & Memberships | 6,280.00 |
| Total Charges for Services | 18,405.52 |
| Annual Meeting Income | 588.00 |
| Interest from Checking, CDs, Savings, Etc. | 10.09 |
| Reimbursements & Refunds | 9,017.74 |
| Sales Income | 56,415.66 |
| Other Miscellaneous Revenue (Describe) | 3,479.05 |
| Other Miscellaneous Revenue Finance Charges | 364.81 |
| Total Miscellaneous Revenue | 69,875.35 |
| Sub-Total (before investment activity) | \$116,273.37 |
| Sale of Investments (CDs, saving accounts, transfers) | \$99.07 |
| TOTAL (balance forward + receipts + investments) | \$145,210.98 |
| DISBURSEMENTS | |
| Annual Meeting Expenses | 1,679.35 |
| Audit Expense | 2,840.00 |
| Conservation Education Programs | 10,244.12 |
| Contractual Services | 800.00 |
| Dues & Subscriptions | 3,807.00 |
| Office Supplies | 862.56 |
| Other Services & Charges | 423.77 |
| Postage & Delivery Expenses | 247.94 |
| Rent | 2,960.04 |
| Repair Expenses | 3,866.50 |
| Sales Tax Paid to IN Dept. of Revenue | 3,477.78 |
| Supplies for Resale | 46,151.93 |
| Telephone or Other Utilities | 1,104.30 |
| Travel/Lodging/Mileage/Registration/Meals | 1,238.35 |
| Other Disbursements - Advertising & Marketing | 8,559.55 |
| Other Disbursements - Awards | 246.00 |
| Other Disbursements - Training | 406.00 |
| Other Disbursements - Insurance | 1,957.00 |
| Total General Government Disbursements | 90,872.19 |
| Sub-Total (before investment activity) | \$90,872.19 |
| Purchase of Investments (CDs saving accounts, transfers) | \$35,000.00 |
| TOTAL DISBURSEMENTS (disbursements + investments) | \$125,872.19 |
| BALANCE AT DECEMBER 31 | \$19,338.79 |
| CLAIMS PAID BY COUNTY | |
| Salaries + Fringe | \$123,536.69 |
| INVESTMENT INVENTORY | |
| Beginning Investments | 15,020.75 |
| Ending Investments | 49,921.68 |
| Change (+/-) | 34,900.93 |
| CASH BOXES | |
| Petty Cash | 300.00 |
| Cash Change | 25.00 |

TIPPECANOE COUNTY TECHNICAL ASSISTANCE

*Summary of Conservation Practices Provided by USDA Natural Resources Conservation Service
Fiscal Year 2016 ~ 10/01/15 through 09/30/16*

| Summary Conservation Practices | Planned | Applied |
|----------------------------------------------------------------------|---------|---------|
| Brush Management (314) (ac) | 25 | 168 |
| Conservation Cover (327) (ac) | 174 | 48.5 |
| Conservation Crop Rotation (328) (ac) | 2763 | 3848 |
| Contour Buffer Strip (332) (ac) | 1 | 0 |
| Cover Crop (340) (ac) | 4643 | 4857 |
| Critical Area Planting (342) (ac) | 1 | 2 |
| Denitrifying Bioreactor (747) (ac) | 1 | 1 |
| Drainage Water Management (554) (ac) | 16 | 16 |
| Early Successional Habitat Development/Management (647) (ac) | 256 | 43 |
| Field Border (386) (ac) | 35 | 22 |
| Filter Strip (393) (ac) | 6 | 0 |
| Forage and Biomass Planting (512) (ac) | 12 | 20 |
| Forage Harvest Management (511) (ac) | 12 | 12 |
| Forest Stand Improvement (666) (ac) | 56 | 25 |
| Grassed Waterway (412) (ac) | 15 | 7.11 |
| Heavy Use Area Protection (561) (sq ft) | 900 | 0 |
| Integrated Pest Management (595) (ac) | 258 | 258 |
| Lined Waterway or Outlet (468) (ft) | 20 | 20 |
| Livestock Pipeline (516) (ft) | 950 | 0 |
| Mulching (484) (ac) | 1 | 2 |
| Nutrient Management (590) (ac) | 483 | 612 |
| Prescribed Grazing (528) (ac) | 8 | 0 |
| Pumping Plant (533) (no) | 1 | 0 |
| Residue and Tillage Management, No-Till (329) (ac) | 1148 | 760 |
| Residue and Tillage Management, Reduced Till (345) (ac) | 1894 | 619 |
| Restoration and Management of Rare and Declining Habitats (643) (ac) | 16 | 16 |
| Riparian Forest Buffer (391) (ac) | 0 | 4 |
| Season High Tunnel System for Crops (798) (sq ft) | 2400 | 4320 |
| Subsurface Drain (606) (ft) | 800 | 2000 |
| Tree/Shrub Establishment (612) (ac) | 3 | 3 |
| Underground Outlet (620) (ft) | 2 | 2 |
| Upland Wildlife Habitat Management (645) (ac) | 39 | 52.8 |
| Water Well (642) (no) | 1 | 0 |
| Watering Facility (614) (no) | 2 | 0 |
| Wetland Restoration (657) (ac) | 9 | 11 |
| Wetland Wildlife Habitat Management (644) (ac) | 9 | 11 |
| Windbreak/Shelterbelt Establishment (380) (ft) | 2840 | 2840 |

SAVE THE DATE!

FORESTRY & WILDLIFE HABITAT FIELD DAY



being held at the Wright Forestry Center
1007 North 725 West, West Lafayette, IN 47906
For more information, please contact us 474-9992, Ext. 3

THURSDAY, JUNE 22, 2017

2017 SPRING PLANT SALE ORDER FORM

NAME: _____
 ADDRESS: _____
 CITY, ST, ZIP: _____
 PHONE: _____
 EMAIL: _____

REMIT ORDER & PAYMENT TO:
 Tippecanoe SWCD
 1812 Troxel Drive, Suite C3
 Lafayette, IN 47909-7367
www.tippecanoe-county-swcd.org

| Botanical Name | Common Name | Flower Season | Mature Height | Exposure | Quantity | Price | Total \$\$ |
|-----------------------------------------------------------------------------------------------------|----------------------------|---------------|---------------|------------|----------|-------|------------|
| FORBS (WILDFLOWERS): 2-3/8" pot | | | | | | | |
| Aquilegia canadensis | Columbine | May-Jun | 2 - 3 ft. | psun-shade | x | 2.50 | |
| Asclepias incarnata | Marsh Milkweed | July-Aug | 3 - 4 ft. | sun | x | 2.50 | \$ - |
| Asclepias tuberosa | Butterfly Weed | Jun-Aug | 1 - 2 ft. | sun | x | 2.50 | \$ - |
| Aster azureus | Sky Blue Aster | Sept | 1 - 2 ft. | sun-psun | x | 2.50 | \$ - |
| Aster novae-angliae | New England Aster | Sep-Oct | 3 - 5 ft. | sun | x | 2.50 | \$ - |
| Baptisia australis | Blue False Indigo | May-Jun | 2 - 4 ft. | sun-psun | x | 2.50 | \$ - |
| Chelone glabra | White Turtlehead | Aug-Sep | 2 - 4 ft. | pshade | x | 2.50 | \$ - |
| Coreopsis lanceolata | Lance-Leaf Coreopsis | May-Jun | 1 - 2 ft. | sun | x | 2.50 | \$ - |
| Echinacea purpurea | Purple Coneflower | Jun-Aug | 3 - 4 ft. | sun-psun | x | 2.50 | \$ - |
| Eryngium yuccifolium | Rattlesnake Master | July-Sept | 3 - 4 ft. | sun | x | 2.50 | \$ - |
| Eupatorium purpureum | Sweet Joe Pye Weed | July-Aug | 4-6 ft. | psun-shade | x | 2.50 | \$ - |
| Geranium maculatum | Wild Geranium | Apr-May | 1 ft. | psun-shade | x | 2.50 | \$ - |
| Helianthus occidentalis | Western Sunflower | Aug-Sep | 2 - 3 ft. | sun | x | 2.50 | \$ - |
| Hibiscus palustris | Swamp Rose Mallow | July-Sept | 3 - 6 ft. | sun | x | 2.50 | \$ - |
| Iris versicolor | Wild Iris | May-Jun | 2 - 3 ft. | sun-psun | x | 2.50 | \$ - |
| Liatris aspera | Rough Blazing Star | Aug-Sep | 1 - 3 ft. | sun | x | 2.50 | \$ - |
| Lobelia cardinalis | Cardinal Flower | Aug-Sep | 1 - 3 ft. | sun-shade | x | 2.50 | \$ - |
| Lobelia siphilitica | Great Blue Lobelia | Aug-Sep | 1 - 3 ft. | sun-shade | x | 2.50 | \$ - |
| Monarda fistulosa | Bergamot | Jul-Aug | 2 - 4 ft. | pshade-sun | x | 2.50 | \$ - |
| Oenothera pilosella | Prairie Sundrops | June-July | 1 ft. | sun | x | 2.50 | \$ - |
| Penstemon hirsutus | Hairy Penstemon | May-Jun | 1 - 2 ft. | sun-psun | x | 2.50 | \$ - |
| Physostegia virginiana | Obedient Plant | Aug-Sep | 2 - 4 ft. | sun | x | 2.50 | \$ - |
| Petalostemum purpureum | Purple Prairie Clover | July-Aug | 1 - 2 ft. | sun | x | 2.50 | \$ - |
| Rudbeckia fulgida speciosa | Orange Coneflower | Aug-Sep | 2 - 3 ft. | sun | x | 2.50 | \$ - |
| Scutellaria incana | Downy Scullcap | Jun-Jul | 2 ft. | psun-shade | x | 2.50 | \$ - |
| Sedum ternatum | Wild Stonecrop | May | 3 in. | shade | x | 2.50 | \$ - |
| Silene regia | Royal Catchfly | Jul-Aug | 2 - 4 ft. | pshade-sun | x | 2.50 | \$ - |
| Solidago speciosa | Showy Goldenrod | Sept-Oct | 1 - 3 ft. | sun-psun | x | 2.50 | \$ - |
| Stylophorum diphyllum | Celadine Poppy | Apr-May | 1 - 2 ft. | shade | x | 2.50 | \$ - |
| Zizia aurea | Golden Alexanders | May | 2 - 3 ft. | sun-psun | x | 2.50 | \$ - |
| GRAMINOIDS (GRASSES & SEDGES): 2-3/8" pot | | | | | | | |
| Carex radiata | Straight-Styled Wood Sedge | Apr-May | 1 ft. | shade | x | 2.50 | \$ - |
| Chasmanthium latifolium | Northern Sea Oats | July-Aug | 2 - 3 ft. | psun-shade | x | 2.50 | \$ - |
| Schizachyrium scoparium | Little Bluestem | Aug-Sep | 2 - 3 ft. | sun | x | 2.50 | \$ - |
| Sorghastrum nutans | Indian Grass | Aug-Sep | 4 - 6 ft. | sun | x | 2.50 | \$ - |
| Sporobolus heterolepis | Prairie Dropseed | Jul-Sep | 1 - 3 ft. | sun | x | 2.50 | \$ - |
| PRESELECTED MIXES (INCLUDES FORBS & GRAMINOIDS): 2-3/8" pot (see | | | | | | | |
| Pollinator Mix (34 plants) 9 species of wildflowers & 1 grass species, adapted to full sun. | | | | | x | 80.00 | \$ - |
| Rain Garden Mix (34 plants) 8 species of wildflowers & 2 grass/sedge species, wet tolerant. | | | | | x | 80.00 | \$ - |
| Shade/Woodland Mix (34 plants) 8 species of wildflowers & 2 species of grass/sedge, shade tolerant. | | | | | x | 80.00 | \$ - |

Please make checks payable to: Tippecanoe SWCD

| |
|--------------|
| TOTAL |
| 7% SALES TAX |
| TOTAL DUE |

ORDER DEADLINE: APRIL 21, 2017

PLANT SALE PICK-UP: Friday, April 28, 2017 from 5:00 - 8:00 p.m.
 Saturday, April 29, 2017 from 9:00 a.m. - 12:00 p.m.



2016 RIVER FRIENDLY FARMER - CHUCK BRETTNACHER

The River Friendly Farmer (RFF) statewide initiative recognizes farmers, who through good production management practices helps keep Indiana's rivers, lakes and streams clean.

Our award for the Tippecanoe Country River Friendly Farmer of the Year goes to Chuck Brettnacher of Brettnacher Farms, LLC. Chuck has fields that run along the main and south fork of the Wildcat Creek, and he utilizes a variety of conservation practices as a part of a cropping system. Practices include spray adaptations to reduce pesticide drift. Herbicides are applied at the right rate, time, method and location. Controlled traffic methods and awareness of soil conditions are used to minimize soil compaction. Soil testing is conducted and nutrients are applied accordingly. His nutrient management practices ensure that herbicides and fertilizers are applied correctly to keep soil and fertilizers out of water, where they become pollutants. Chuck practices no-till which is essential in maintaining soil health, including increased water-holding capacity and decreased erosion. Chuck's has installed a variety of conservation best management practices benefitting wildlife and water quality. These practices include field borders, riparian forest buffers, warm season grass plantings and woodlands.

Congratulations Chuck in being recognized as the 2016 River Friendly Farmer of the Year!

2016 FRIEND OF CONSERVATION AWARD WINNER KEEP STOCKWELL BEAUTIFUL, INC.

The Friend of Conservation award promotes & recognizes conservation efforts by community or civic leaders, homeowners, businesses, volunteers, teachers, students, and student organizations.

Our Friend of Conservation Award winner this year is Keep Stockwell Beautiful, Inc. Keep Stockwell Beautiful, Inc. (KSB) began in 2007 with an emphasis on litter prevention, beautification, education, and waste reduction. Practices and programs that have been established by KSB are as follows:

1) \$20,000 renovation of the James Cole Outdoor Education Center; 2) Establishment of educational areas within the Cole Outdoor Education Center, including rain garden, butterfly garden, rain barrels, windmill, etc.; 3) Co-hosting an annual Pond Day for 4th & 5th Graders with emphasis on soil, water, and wildlife habitat in Cole Outdoor Education Center; 4) Marking of stormwater drains at James Cole Elementary School; 5) Establishment of a recycling program which has now collected 1.4 million pounds; 6) Establishment of an annual Bulky Trash, Tire & Electronic collection event; 7) Provision of pollinator educational materials ; 8) Provision of a purple coneflower to each Stockwell citizen at no charge; 9) Establishment of a cost-share program for the purchase of rain barrels; and 10) Establishment of a Town Clean-up and ongoing leadership of James Cole Elementary school's students "Cole Cubs" who assist in clean-up and beautification efforts.



We are pleased to recognize Keep Stockwell Beautiful for their efforts in the town of Stockwell and at James Cole Elementary School Outdoor Learning Center!

2016 CONSERVATION STEWARDSHIP - KERKHOFF RANCH, INC.

This award was created by the Tippecanoe County Soil and Water Conservation District in 2016. The Conservation Stewardship Award is a local initiative to provide recognition to a producer or landowner who has recently adopted conservation practice(s) which improve soil and water resources.

Gary Kerkhoff of Kerkhoff Ranch Inc. is our first ever recipient. Gary farms along with his son-in-law, John Kendell, in the southern portion of Tippecanoe County where they produce corn and soybeans. The farm has implemented conservation buffers planted to prairie grasses that provide wildlife habitat. There is also an interest in installing grassed waterways to control soil erosion. Cover crops have recently been incorporated into their cropping system, providing conservation benefits associated with soil health, such as erosion control and increased soil organic matter.

Congratulations Kerkhoff Ranch Inc. on your conservation efforts!



TIPPECANOE COUNTY SOIL & WATER CONSERVATION DISTRICT
1812 TROXEL DRIVE, SUITE C3
LAFAYETTE, IN 47909-7367
PH: 765-474-9992, EXT. 3
www.tippecanoecountyswcd.org

*"Time spent among trees is never wasted time."
~ Katrina Mayer*



Outdoor Explore! Participants

All programs and services of the Soil and Water Conservation District are offered on a nondiscriminatory basis without regard to race, color, age, gender, national origin, religion, marital status, or handicap.