

Large Trees



Red Maple

Acer rubrum



Height: 80'

Spread: 50'

Sun: sun to part shade

Site conditions: tolerates a wide array of conditions

Notes:

- Younger trees have pyramid shape, but crown becomes more round with age
- Not tolerant of salt or drought
- Showy red fall color
- Small, red flowers in late March/early April
- Fast growing
- Shallow-rooted

3 gal, 3-4' tall



Pawpaw

Asimina triloba

Height: 15 - 30'

Spread: 15 - 30'

Sun: full sun to part-shade

Site conditions: moist, well-drained soils

Notes:

- Produces fruits commonly called “Indiana Banana” for their banana-like flavor and consistency
- Smell/taste of foliage deters deer browse
- Suckers to form colonies
- Genetically different trees required to produce flowers and fruits

1 gal, 1-2' tall



River Birch

Betula nigra

Height: 40 - 70'

Spread: 40 - 60'

Sun: full sun to part shade

Site conditions: moist to wet

Notes:

- Peeling bark provides winter interest
- Fast-growing
- Irregular, spreading crown
- Well suited for areas that are seasonally wet
- Seeds eaten by wildlife

3 gal, 4-5' tall



Northern Catalpa

Catalpa speciosa

Height: 40 - 70'

Spread: 20 - 50'

Sun: full sun to part shade

Site conditions: moist to wet



Notes:

- Tolerant of a wide range of soil conditions
- Large, showy flowers in late spring
- Long, green bean-like seed pods in summer
- Host to Catalpa Sphinx moth and caterpillars can be found in large numbers
- Produces ground litter through shed branches, flowers, seed pods

3 gal, 4-5' tall



American Hornbeam

Carpinus caroliniana

Height: 35'

Spread: 35'

Sun: shade to part shade

Site conditions: moist to wet acidic soils

Notes:

- Also called Musclewood because bark has smooth, muscular appearance
- Another name is Ironwood
- Slow-growing
- New leaves are reddish-purple, then turn green, and are red-yellow in the fall
- Tolerates dry, sandy sites, sun and clay



Eastern Red Cedar

Juniperus virginiana

Height: 40 - 50'

Spread: 8 - 20'

Sun: full sun

Site conditions: dry or moist, well-drained soils

Notes:

- Important for wildlife cover
- Prefers alkaline (basic) soil
- Type of juniper, not a true cedar
- Tolerant of many site conditions
- Needles of young trees are sharp, and become flat and scale-like as it matures
- Often found in old fields or roadsides

3 gal, 2-3' tall



Tulip Poplar

Liriodendron tulipifera

Height: 60 - 90'

Spread: 30 - 50'

Sun: full sun to part-shade

Site conditions: moist to well-drained

Notes:

- State Tree of Indiana
- Large, yellow, tulip-like flowers in spring
- Yellow foliage in fall
- Oval-shaped crown
- Intolerant of compacted soils
- Flowers attract pollinators
- Tall, straight trunk
- Fast growing

3 gal, 4-5' tall



Black Gum

Nyssa sylvatica



Height: 30 - 50'

Spread: 20 - 30'

Sun: full sun to part shade

Site conditions: moist to wet

Notes:

- Also called Black Tupelo
- Tolerates poorly drained soils, and somewhat drought tolerant
- Need a male and female tree to set fruit
- Fruit is dark blue
- Wildlife eat fruit
- Slow-growing
- Rounded crown
- Small flowers excellent for pollinators
- Showy fall foliage (ranges from yellow, orange, red, burgundy)



White Pine

Pinus strobus

Height: 50 – 100'

Spread: 20 – 40'

Sun: full sun to part shade

Site conditions: moist soils

Notes:

- Fast growing and long-lived
- Whorls of horizontal branches
- Provide excellent cover for birds
- Can be planted in rows as a windbreak
- Not tolerant of pollution, clay or compacted soils

3 gal, 2-3' tall



Pin Oak

Quercus palustris

Height: 50 - 70'

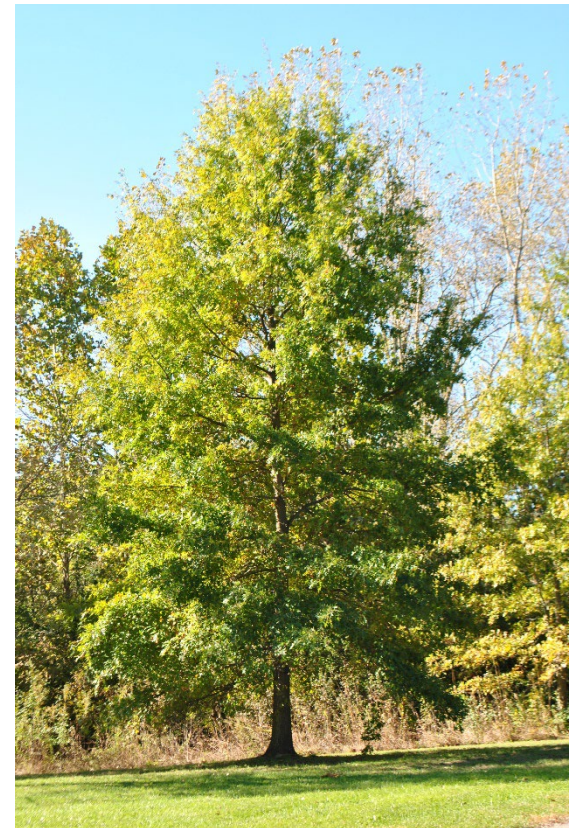
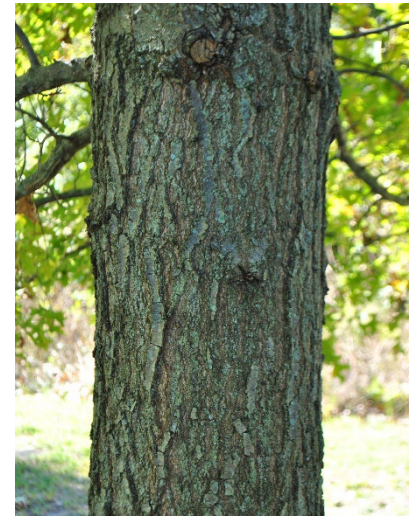
Spread: 40 - 60'

Sun: full sun

Site conditions: moist, acidic soils

Notes:

- Tolerates poor drainage
- Russet/red fall color
- Grows quickly
- Pyramid-shaped crown, with upper branches angling up and lower branches angling down
- Named for many short “pin-like” branches



Northern Red Oak

Quercus rubra

Height: 60 - 75'

Spread: 60 - 75'

Sun: full sun to part shade

Site conditions: moist, well-drained soil

Notes:

- Acorns produced every 3 years on average
- Best in sandy/loam soil
- Broad, symmetrical, low crowns

3 gal, 4-5' tall



Canadian Hemlock

Tsuga canadensis

Height: 40 - 70'

Spread: 25 - 35'

Sun: Full to part shade

Site conditions: moist, acidic, well-drained sites

Notes:

- Also known as Eastern Hemlock
- Found in moist ravines
- Not drought tolerant
- Slow-growing and very long-lived
- Evergreen with feathery needles
- Can be trimmed to form a hedge



Small Trees & Shrubs



Allegheny Serviceberry

Amelanchier laevis

Height: 15 - 30'

Spread: 15 - 30'

Sun: full sun to part shade

Site conditions: moist to well-drained sites

Notes:

- Also called Juneberry, for the dark purple fruit produced in June
- Usually multi-trunked understory tree
- Often found at the edge of woods
- White flowers in spring before leaves
- Red-orange fall foliage
- Birds feed on berries
- Not tolerant of salt or drought
- Tolerant of black walnut toxicity

3 gal, 4-5' tall



Red Chokeberry

Aronia arbutifolia

Height: 6 - 10'

Spread: 3 - 6'

Sun: full sun to part shade

Site conditions: tolerates a range of soils, including wet conditions

Notes:

- Best fruit and flower production in full sun
- Spreads by root suckers
- White flowers in spring
- Red berries in fall
- Red-orange fall foliage

3 gal, 2-3' tall



Redbud

Cercis canadensis



Height: 20 - 30'

Spread: 15 - 25'

Sun: full sun to part shade

Site conditions: moist, well-drained

Notes:

- Shade tolerant
- Doesn't do well in poorly drained soils
- Multi-trunked
- Understory tree
- Rounded crown
- Pink flowers in early spring
- Pollinators feed on flowers
- Short trunk

3 gal, 5-6' tall



Pagoda Dogwood

Cornus alternifolia



Height: 15 - 25'

Spread: 20 - 32'

Sun: full sun to part shade

Site conditions: moist to well-drained

Notes:

- Also called Alternate Dogwood
- Shade tolerant
- Small, multi-stemmed tree
- Small, fragrant, cream-colored flowers
- Blue-black fruit in late summer
- Reddish-purple fall foliage
- Horizontal branches give it a unique "layered" appearance
- Wildlife eat fruit



Red Osier Dogwood

Cornus sericea

Height: 5 - 8'

Spread: 5 - 8'

Sun: full sun to part shade

Site conditions: wet or moist, well-drained soil

Notes:

- Stems dark red in winter
- Rounded shape, forms thicket
- Important for bird food and shelter

3 gal, 2-3' tall



Hazelnut

Corylus americana

Height: 10 - 16'

Spread: 8 - 13'

Sun: full sun to part shade, shade-tolerant

Site conditions: moist to well-drained



Notes:

- Also called American Filbert
- Rounded, multi-stemmed shrub
- Edible nuts in summer
- Wildlife eat nuts
- Can form thickets (tends to sucker from roots)
- Need two trees for pollination
- Fall color varies from yellow to red

3 gal, 2-3' tall



American Witchhazel

Hamamelis virginiana

Height: 15 - 20'

Spread: 15 - 20'

Sun: full sun to part shade

Site conditions: moist to well-drained

Notes:

- Shade tolerant
- Tolerates heavy clay soils
- Produces root suckers to form colonies
- Fragrant, yellow flowers in late fall
- Yellow foliage in fall
- Often multi-trunked
- Irregular, open crown
- Seeds eaten by wildlife

3 gal, 2-3' tall



Shrubby St. John's Wort

Hypericum prolificum

Height: 2 - 5'

Spread: 2 - 4'

Sun: full sun to part-shade

Site conditions: medium, well-drained

Notes:

- Drought tolerant
- Compact, rounded form
- Can be grown as a hedgerow
- Tolerant of clay soils

3 gal, 2-3' tall



Spicebush

Lindera benzoin

Height: 6 - 12'

Spread: 6 - 12'

Sun: full sun to part shade

Site conditions: moist to well-drained

Notes:

- Shade tolerant
- Small, fragrant green flowers in spring
- Need male and female plants to produce fruit
- Flowers of female plants develop red fruit
- Yellow foliage in fall
- Leaves have fragrant, spicy aroma when crushed



Common Ninebark

Physocarpus opulifolius

Height: 5 - 10'

Spread: 5 - 10'

Sun: full sun to part sun

Site conditions: moist to dry soils



Notes:

- Named for layers of reddish-brown peeling bark
- White flowers in spring attract a variety of pollinators
- Flower buds and young fruit are pink
- Yellow fall foliage
- Fast growing
- Can be cut back for a shorter shrub

3 gal, 2-3' tall



UGA5142099

Shrubby Cinquefoil

Potentilla fruticosa

Height: 2 - 4'

Spread: 3 - 5'

Sun: sun to part-shade

Site conditions: moist to dry sites

Notes:

- Drought tolerant
- Abundant yellow flowers in summer
- Does well in a variety of soil types, but prefers slight acidity
- Nectar source for honeybees
- Host plant for caterpillars of the Dorcas Copper butterfly

3 gal, 2-3' tall



American Plum

Prunus americana

Height: 15 - 25'

Spread: 15 - 25'

Sun: full sun to part shade

Site conditions: moist to dry

Notes:

- Shade tolerant
- Small tree/large shrub
- Produces root suckers
- Can form thickets
- White flowers in early spring
- Edible plums produced in early summer
- All parts of tree except for plums are toxic
- Can have thorns
- Provide good wildlife habitat
- Wildlife eat fruit



Smooth Sumac

Rhus glabra

Height: 8 - 10'

Spread: 4 - 6'

Sun: full sun

Site conditions: dry to moist soil,
well-drained

Notes:

- Can form colonies
- Stem provides food and cover
- Fruits provide food for wildlife
- Beautiful fall colors



Pussy Willow

Salix discolor

Height: 6 - 15'

Spread: 4 - 12'

Sun: full sun to part shade

Site conditions: moist to wet

Notes:

- Shrub that can form thickets due to root suckering
- Intolerant of dry soils
- Separate male and female trees
- Males have showier catkins in late winter
- Catkins said to resemble cat's paw
- Can be regularly cut back for smaller shrub
- Fast-growing
- Provides food source for wildlife in late winter



Elderberry

Sambucus canadensis

Height: 5 - 12'

Spread: 5 - 12'

Sun: full sun to part shade

Site conditions: moist to wet soils

Notes:

- Spreads by root suckers to form colonies
- Also known as American Elder
- Large white flowers in summer, followed by black fruit
- Fruit often used in jellies, pie and wine
- Fruit attractive to wildlife

3 gal, 2-3' tall



Blackhaw Viburnum

Viburnum prunifolium

Height: 12 - 15'

Spread: 6 - 12'

Sun: full sun to part shade

Site conditions: moist to dry sites

Notes:

- Spring leaves are copper colored
- White flowers in spring
- Black/blue fruit in fall
- Pinkish buds in winter
- Produces more flowers/fruit in full sun
- Fruit persists into winter and eaten by a variety of wildlife species
- Form can be a small tree or a thicket of shrubs

1 gal, 2-3' tall

