

# BRIDGEPOINT

## LIGHTART FIXTURE OFFERING REVIEW

PID # 309839



## OVERVIEW

1. Revised RCP - Fixtures and Counts
2. New Acoustic Conical Pendants (alt for Buzzispace fixtures)
3. Contour (alt fixture option)
4. Static Beams + Baffles (War Room)
5. Fixture Type A - Static Alternative
6. Mobile - Inspiration + Request for Info

# REVIEW OF RCP + FIXTURE COUNT

## 1ST FLOOR

### TYPE // QUANTITY // FIXTURE NAME // DIMENSIONS

U - (40) - ECHO Pendants 47" dia, 8-Fin (various grids) - 47" dia x 14"H

X - (1) - LA2 Connected Square Configuration *(remove from scope?)*

Y - (1) - LA2 Connected Rectangle Configuration *(remove from scope?)*

Z - (1) - LA2 Connected Linear Configuration - 6"D x 32'6"L x 8"H

AA - (6) - I/O BOX - 36" x 36" x 12"H

BB - (13) - LA2 ONE Medium - 30" x 12"H

KK - (3) - \*Need more details (LA2 ONE Medium specified but dimensions match I/O Drum 48 - 48" dia x 12"H)

### BUZZISPACE FIXTURES > LIGHTART ALTERNATE OPTIONS

#### TYPE // QUANTITY // FIXTURE NAME // DIMENSIONS

CC - (5) - Buzzishade Pendant Medium - 24" dia

DD - (3) - Buzzishade Pendant Large - 44" dia

HH - (4) - Buzzijet Pendant Medium - TBD

*Seeking Clarification...*

**1st floor NW Room, long and linear, with all of the R-Type Fixtures:**

- Are fixtures LightArt Static Baffles to be specified and quoted?

## 2ND FLOOR

### TYPE // QUANTITY // FIXTURE NAME // DIMENSIONS

L - (2) - Ribbon Clouds - 48" dia

N - (3) - I/O Box - 60" x 60" x X"H (TBD)

O - (9) - LA2 TWO Large - 48" x 48" x 12"H

AA - (2) - I/O BOX - 36" x 36" x 12"H

BB - (7) - LA2 ONE Medium - 30" x 12"H

GG - (10) - Static 8ft Beams - 96"L x 16"H x 4"D

### BUZZISPACE FIXTURES > LIGHTART ALTERNATE OPTIONS

#### TYPE // QUANTITY // FIXTURE NAME // DIMENSIONS

CC - (7) - Buzzishade Pendant Medium - 24" dia

DD - (3) - Buzzishade Pendant Large - 44" dia

HH - (6) - Buzzijet Pendant Medium - TBD

*Seeking Clarification...*

**2nd floor NW Room, with FF-Type fixtures + (2) Rooms with GG-Type fixtures:**

- Are fixtures LightArt Static Baffles to be specified and quoted? Approx. (42) qty

- War Room - How many Static Beams (Lit) + Static Unlit Baffles specified?

## NEW! ACOUSTIC CONICAL PENDANTS

### DOUBLE WALL FELT PENDANTS

#### STYLE A

36" dia (bottom) x 18"H - \$1,925 ea.

#### STYLE B

32" dia (bottom) x 20"H - \$1,825 ea.

*\*Suggested alternative in Cafe area or as Buzzispace fixture alternative.*



# CONTOUR COLLECTION

## ROUND OVER

### SMALL

21" dia x 11"H - \$995 ea.

### MEDIUM

27" dia x 14"H - \$1,295 ea.

### LARGE

39" dia x 18"H - \$1,990 ea.



## BEVEL

### SMALL

36" dia (bottom) x 18"H - \$1,925 ea.

### MEDIUM

36" dia (bottom) x 18"H - \$1,925 ea.



## CHAMFER

### SMALL

21" dia x 15"H - \$995 ea.

### LARGE

21" dia x 21"H - \$1,290 ea.

## DOVETAIL

### SMALL

18" dia x 12"H - \$995 ea.

### LARGE

19" dia x 21"H - \$1,290 ea.

*\*Suggested fixture alternative - please clarify which fixture type this would be relating.*

# STATIC BEAMS + BAFFLES COLLECTION



## STATIC LIT BEAMS

**Static 48-4** (*indirect light only; no direct light*)

49.375"L x 4"W x 4"H - \$600 ea.

**Static 48-6**

49.375"L x 4"W x 6"H - \$630 ea.

**Static 48-12**

49.375"L x 4"W x 12"H - \$660 ea.

**Static 48-16**

49.375"L x 4"W x 16"H - \$690 ea.

**Static 96-4** (*indirect light only; no direct light*)

97.25"L x 4"W x 4"H - \$1,080 ea.

**Static 96-6**

97.25"L x 4"W x 6"H - \$1,200 ea.

**Static 96-12**

97.25"L x 4"W x 12"H - \$1,320 ea.

**Static 96-16**

97.25"L x 4"W x 16"H - \$1,440 ea.

## STATIC BAFFLES

**Baffle 48-4**

49.375"L x 4"W x 4"H - \$325 ea.

**Baffle 48-6**

49.375"L x 4"W x 6"H - \$350 ea.

**Baffle 48-12**

49.375"L x 4"W x 12"H - \$375 ea.

**Baffle 48-16**

49.375"L x 4"W x 16"H - \$395 ea.

**Baffle 96-4** (*indirect light only; no direct light*)

97.25"L x 4"W x 4"H - \$575 ea.

**Baffle 96-6**

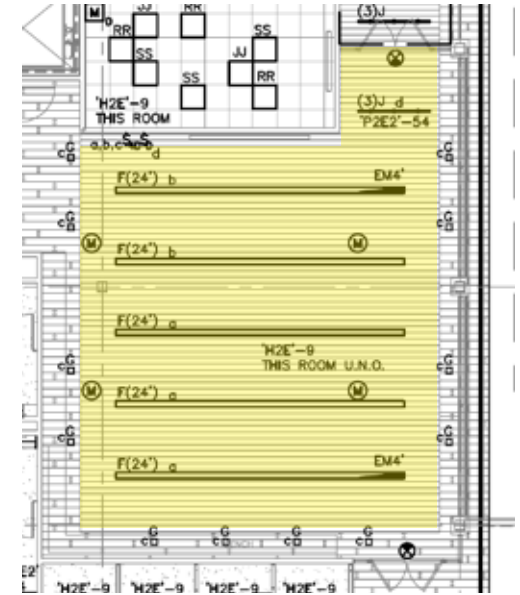
97.25"L x 4"W x 6"H - \$650 ea.

**Baffle 96-12**

97.25"L x 4"W x 12"H - \$725 ea.

**Baffle 96-16**

97.25"L x 4"W x 16"H - \$775 ea.



\*Suggested alternative in War Room on 1st Floor.



## STATIC SLIM BAFFLES

**Slim Baffle 48-12**

49.375"L x 2"W x 12"H - \$275 ea.

**Slim Baffle 48-16**

49.375"L x 2"W x 16"H - \$295 ea.

**Slim Baffle 96-12**

97.25"L x 2"W x 12"H - \$475 ea.

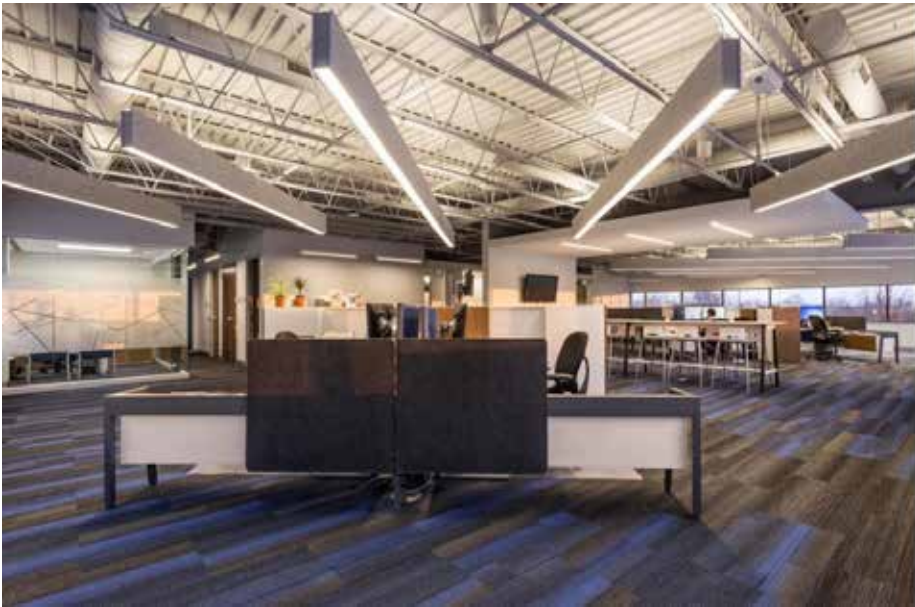
**Slim Baffle 96-16**

97.25"L x 2"W x 16"H - \$550 ea.

## STATIC - FIXTURE TYPE A - ALTERNATIVE



\* Can be connected up to 32'0"L per (1) power cord/power supply, longer lengths possible however will have additional power cords per every 32' run.



\* ABOVE: Images of LightArt Static connected Beams project, showing 12"H fixtures used for light and acoustical needs throughout the open office environment.

# LIGHTART MOBILE

## DETAILS NEEDED FOR QUOTE

### LOCATION IN REFLECTED CEILING PLAN

- 1st or 2nd floor, which Phase in project: 1, 2, or 3

### DIMENSIONS

- Hanging length
- Width and Depth of area space to be filled

### CEILING CONDITIONS

- Can 1/4-20 threaded rod be installed for mobile hardware to connect to ceiling?

### CONCEPT

- Do you have inspiration images?
- Color(s) material desired?
- Shape + size of Varia mobile pieces?

