

Custom Health Care Wayfinding Light Boxes

Rush Medical

Health Care Renovation
Custom Wayfinding
Light Boxes
Oak Brook, Illinois



Custom Health Care Wayfinding Light Boxes

Rush Medical

Project: Rush Oak Brook Outpatient Center (ROBOC)

Completed: 2019

Location: Oak Brook, Illinois

Specifier: Cannon Design (Title Page Photo Credit: Craig Dugan)

Project Overview

My Role - Project Manager

The 100,000 SF, three stories tall, outpatient care facility houses 65 patient exam rooms, outpatient surgery center, physical and occupational therapy, a sports performance center, and medical laboratory with imaging capabilities. With all of these functions happening within one center the modern facility goal was to make healthcare more collaborative and accessible. With accessibility in mind also came a need to create an ease of the user moving within the space using wayfinding with color and light - enter LightArt to create custom wall mounted light boxes.

During my initial concept call with the designer I had determined that specific design details were necessary based upon the human behavior in the space for navigating, maintenance, and meeting code requirements. The size was as large as we could seamlessly make with our material, the fixture required it be CSA approved and meet ADA standards, the color matching was important. Additionally, upon thinking about cleaning standards, I initially designed a base/kick plate to protect the fixture from moisture and collisions with cleaning devices, but later removed it from the design after additional design development.



Rendering above courtesy of Cannon Design

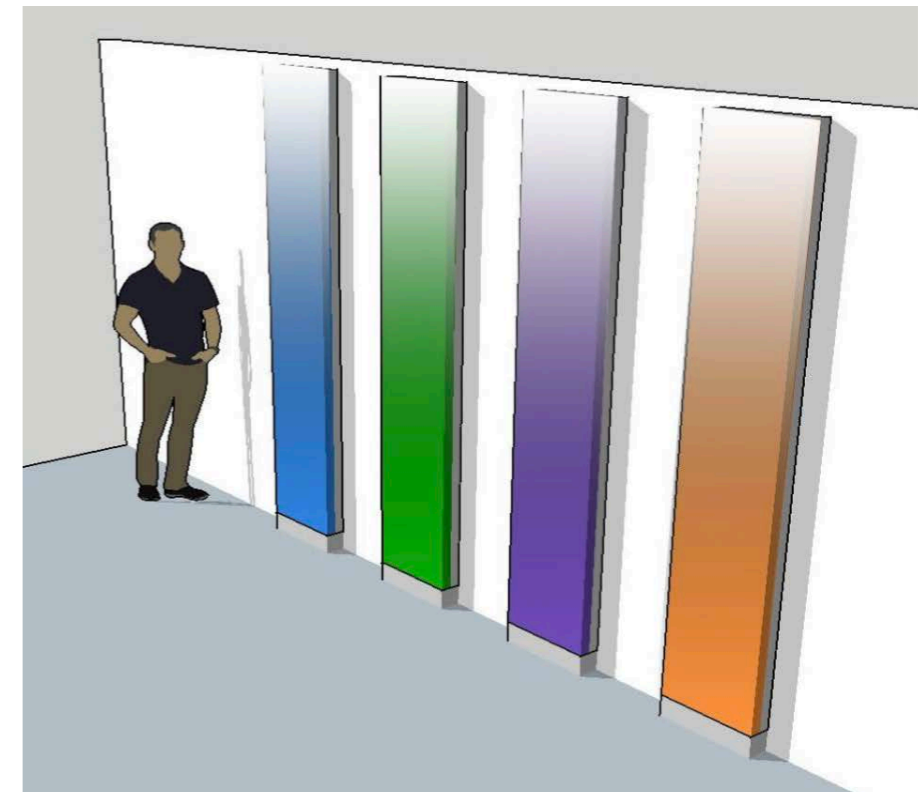


LIGHTART CUSTOM
LIGHT BOX

108"H x 24"W x 4"D

Gradient High-Res
Graphic Print on Varia
Eco Resin Sheet

(1) Blue, (1) Green,
(1) Purple, (1) Orange



Custom Health Care Wayfinding Light Boxes

Obstacles

Photo 4. The sales rep had worked with the designer matching paint colors to color films without taking into consideration light (backlight).

Photo 1. After the sales rep sent the selected samples to me for fabrication testing (routing and gluing) I noticed the striations and uneven color in the sample gradient print, when backlit.



1.



2.



3.

Photo 5. I sourced an outside local printing vendor, as our parent company was unable to manufacture the printed material without striations.

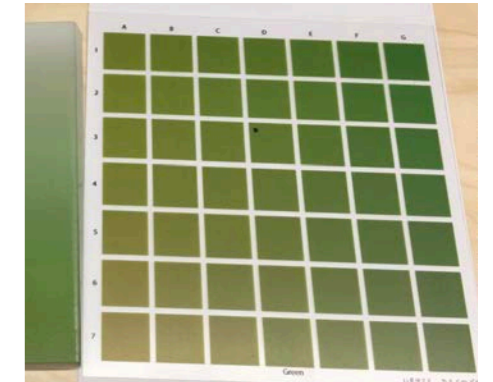
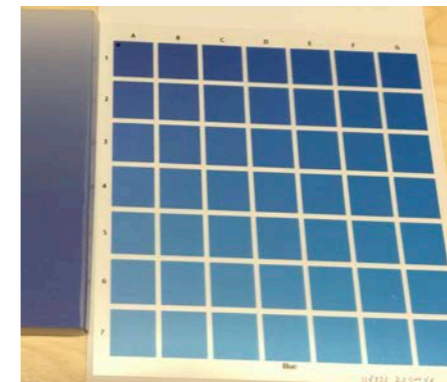
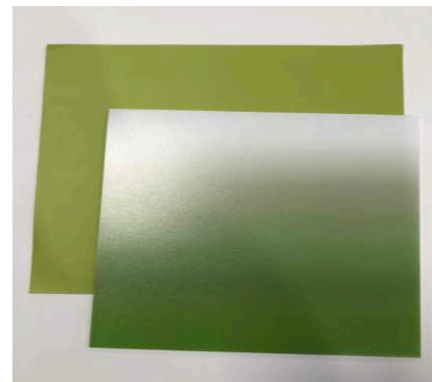
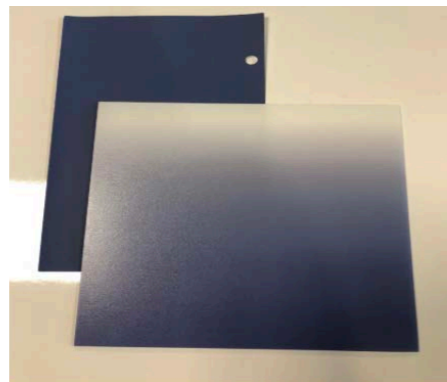
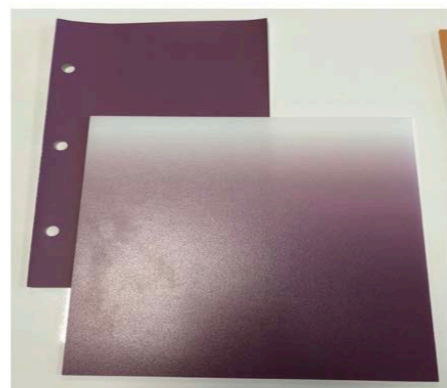
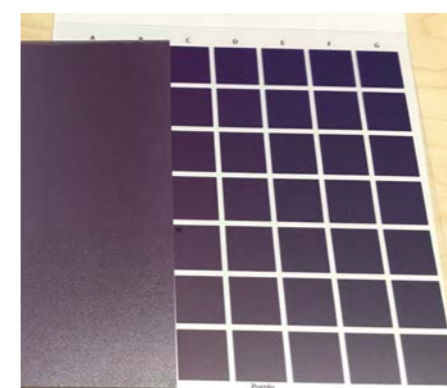
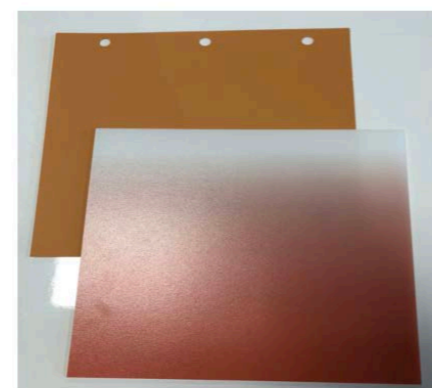


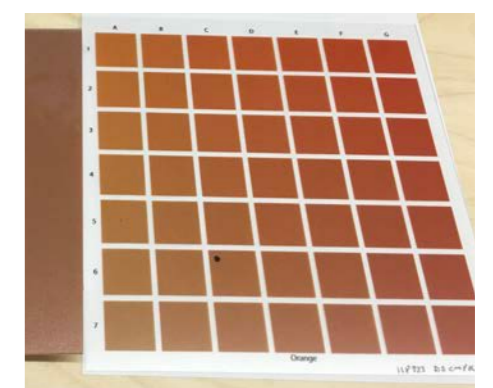
Photo 2. After confirming the colors I did a full scale test shade build and realized that the light output was too much for the diffusion layers initially sampled and *Photo 3.* Shows the remedied added diffusion for the final built product.



4.



5.



Custom Health Care Wayfinding Light Boxes

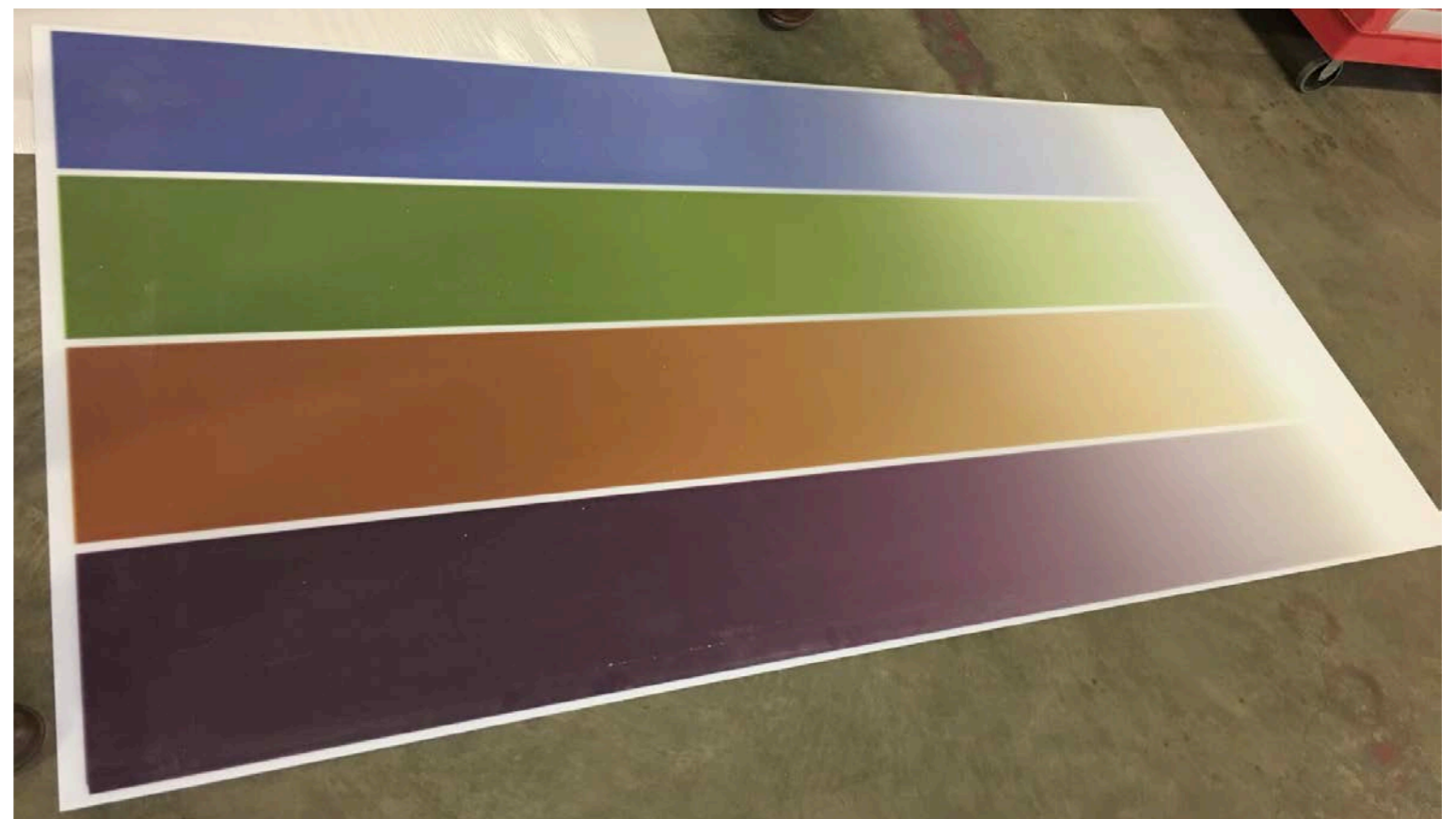
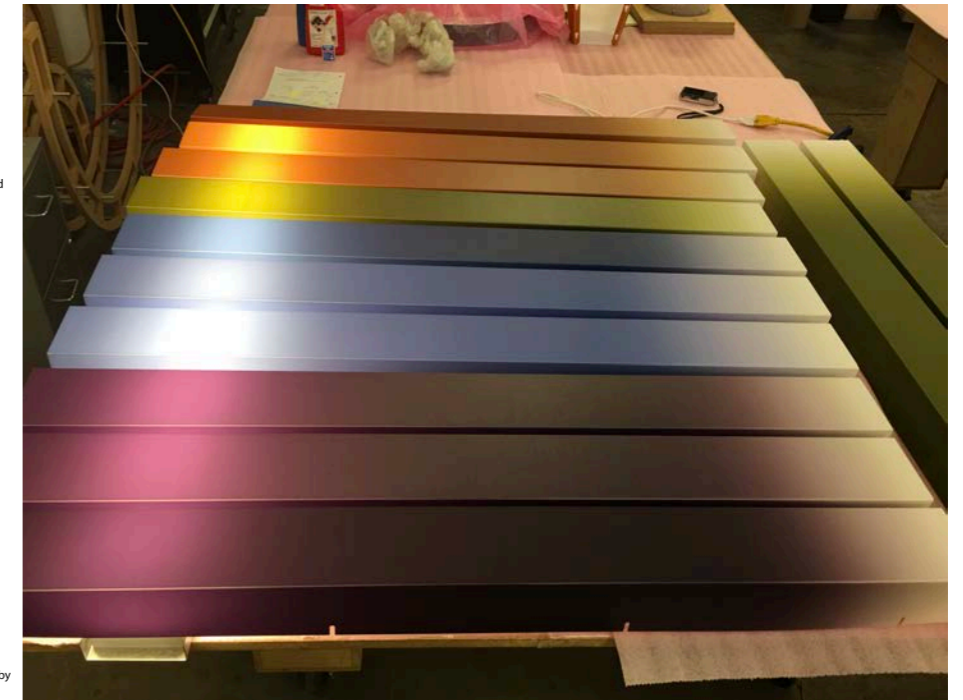
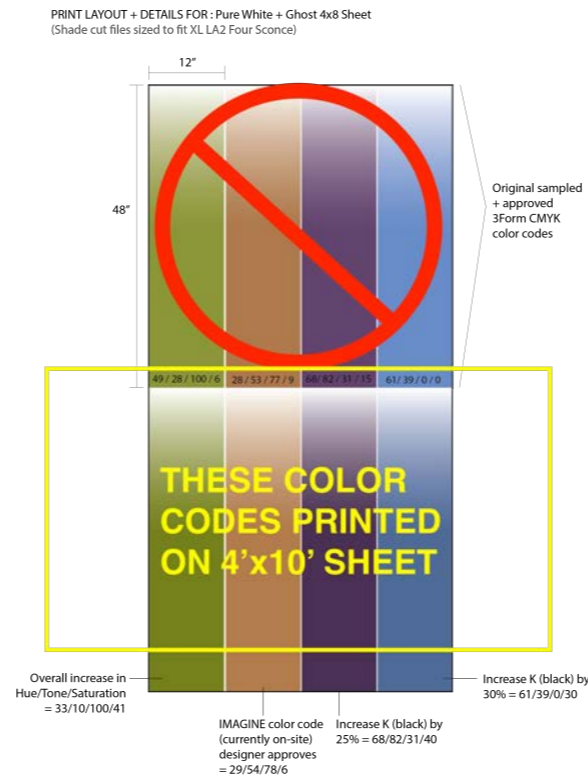
Project Process Details

Having experience in graphic printing on a variety of mediums (textiles, films, packaging materials) and working with outside printing vendors, the task felt manageable of executing a solution and refining color codes for new sample options for the designer to review and approve.

Shown in the photos on the right are the detailed drawings and specifications I had made for the printing vendor, which included multiple rounds of documentation. Along with the photo of the 12 scaled down light boxes (3 in each color code for designer review and selection). Lastly, the final full scale gradient test print of the 4 final selected and approved colors.

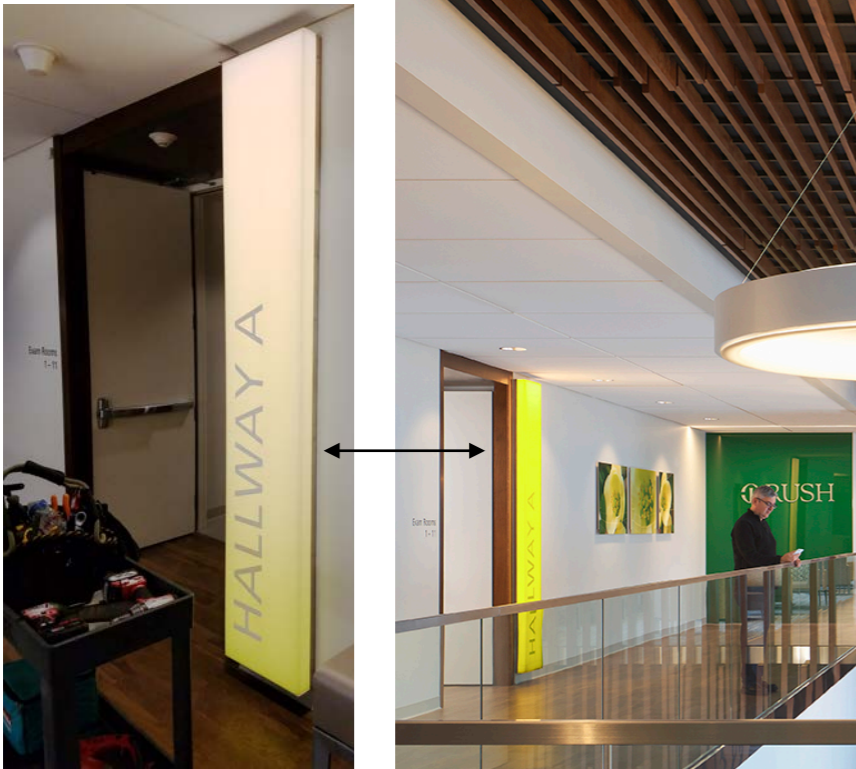
To adequately show the LED lighting along with the color options, we created the custom color shades in a scaled smaller version, from LightArt's existing stock LA2 Four sconces. After the designer made her color selection, the sconces would then be repurposed and redistributed to some of LightArt's nationwide sales reps to be used as a sales tool.

To provide extra custom care and support, we sent the LightArt Light Lab manager to the site to assist the installer with the correct installation and calibration of the dimmable fixtures so that they were set at the approved and desired visual output level.



Custom Health Care Wayfinding Light Boxes

Final installation photos of the light boxes, I received from the LightArt Light Lab Manager, during on-site installation.



Final Green Fixture

Photo Credit: Craig Dugan



Final Orange Fixture



Photo Credit: Craig Dugan



Final Blue Fixture



Final Purple Fixture

Custom Health Care Wayfinding Light Boxes

Project Takeaways

- It is important as the project manager, to be a part of the initial sampling to best understand the product intent with the client and the sales rep, to offer advice, alternatives and to save time and money.
- Budgeting a full scale sample into the cost quoting structure would allow for the best review and understanding of how the light and color will interact to best color match interior wall paint. However, it is always wise to set expectations with the client and explain the science of light and color to the best of ones ability, so they can understand why/how the wall paint and lit printed color will appear slightly different together in the final space.
- Using a local printing provider creates a faster turn around for sampling, reduces costs and production lead time, and can build relationships with local manufacturers for future business initiatives.
- Although there were a few trials and tribulations, this project still did end within budget and completed on time for the professional site photography to be taken by Craig Dugan.
- This project was shared as a learning tool to the sales team and the samples made from this project were able to be repurposed and distributed as sales tools.



Photo Credit: Craig Dugan