



xTerra Pro

USA Distributor of

RoadPacker Technology

THE ROADPACKER SOLUTION

RoadPacker Group is the first company to seriously address the challenges of soil stabilization for the creation and maintenance of hard-wearing roads.

We identified chemical soil stabilization as an ideal solution and have since maintained a program of research and development to provide products for many types of roads.



RoadPacker are full time practitioners in the chemical soil stabilization industry. Most of our competitors include their stabilization products as second or third-string lines of their core business.

Save from 30-45% of capital road building costs with RoadPacker eco-friendly chemical soil stabilization products.



RoadPacker roads are dust free in the dry season and solid as a rock in the rainy season.

RoadPacker increases the density, strength and CBR values of roads significantly; it reduces base depths by more than 50%, saving on the quantity of gravel, handling and other associated costs.

RoadPacker greatly reduces maintenance by minimizing the damaging effects of water and traffic.

RoadPacker is easy to store and transport

RoadPacker uses chemicals to modify the properties of soil to make it more dense, increasing binding of the soil particles which **improves the soil's ability to bear load without deformation.**

xTerra Pro

THE ROADPACKER STORY

Machines used for RP+ Road are same for Standard Roads Construction

1. Grader or Rotovator:

For ripping, mixing, shaping, and leveling soil



2. Water Tank:

For spraying RP+ solution to ripped soil



3. Vibrating compactor:

For compacting the soil/road



Our technology can use the different types of soils as long as we have a clay content of 15% to 50% of the soils to be treated.

Clay is the essential component of our technology as it provides the binding element. By the use of compaction we irreversibly change the chemical composition of clay into a material that will bind all the elements of the treated soils into a very solid mass.

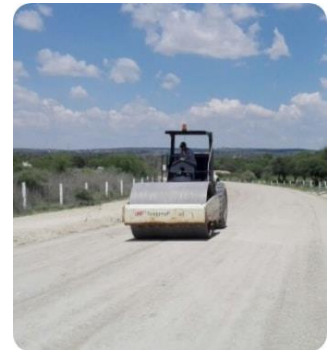
Our treatment requires that the pH values of the soils be between 7-8.



A Cost-Effective Method of Road Construction

RoadPacker has been used all over the World to produce **low cost, low maintenance and long-lasting roads**. We have a range of chemical products that will stabilize ALL clay-based soils.

- **RoadPacker** stabilizes soils and gravels which contain clay.
- **RoadPacker** is a very powerful chemical agent which ionizes water and induces ionic exchange at the surface of clay particles.
- **RoadPacker** acts as a super plasticizer and greatly increases the compactability of the treated soil.
- **RoadPacker** is a de-watering agent and rejects water over long periods of time.
- **RoadPacker** is a permanent process application.



Proven to Work in Real World Environments

Our proprietary formula has been used successfully on many projects since 1989, and we continue to invest in R&D to produce new and enhanced products.

THE ROADPACKER STORY



Quite Simply - Your Road in a Drum

Just **1 gallon of RoadPacker Plus** is needed to **treat approximately 150 square yards** (6-inch base depth) of road. Our drums of eco-friendly soil stabilization chemicals can be delivered directly to you.



Usable on Projects of All Shapes and Sizes

We work closely with Government departments, Federal, Municipal and City, world-wide to offer an alternative to the traditional road construction industry.



XTERRAPRO LLC
info@xterrapro.com
+1.678.341.0177

RoadPacker soil stabilization products work with ALL clay-based soils

RoadPacker Plus™ when applied correctly to a dirt or gravel road, near eliminates costly maintenance, whilst improving pavement life and durability.

Its use as a surface stabilizer is **ideal for rural communities and back-roads** whilst its use as a sub-grade stabilizer ensures huge cost savings in paved road construction.



A Solution to Building Roads with Local Labor

RoadPacker soil stabilization projects can be undertaken by local labor under supervision of a RoadPacker specialist. This makes it a great option for emerging markets and budget minded departments.

XTERRA Pro