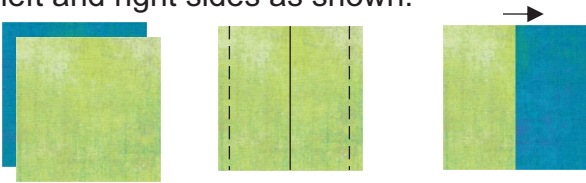


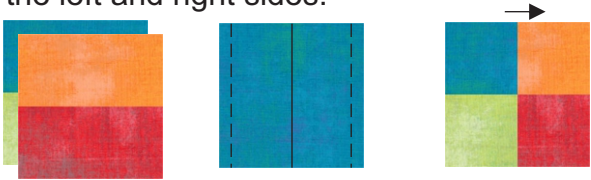
"Mystery Quilt-Along" - Clue 1

40" x 40"

- Layer (2) Assorted "A" Squares on top of each other and sew a 1/4" seams down the left and right sides as shown.



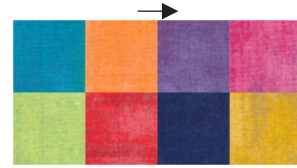
- Cut in half down the middle (Solid line) to make (2) Pieced Rectangle Units. Press seam in either direction.
- Repeat previous (2) steps to make a total of (16) Pieced Rectangles
- Layer (2) Pieced Rectangles on top of each other as shown and sew a 1/4" seams down the left and right sides.



- Cut in half down the middle (Solid line) to make (2) 4-patch Units. Press seam in either direction. Unit should measure:
 - Small Version 4-1/2" x 4-1/2"
 - Large Version 9-1/2" x 9-1/2"
- Repeat previous (2) steps to make a total of (16) 4-patch Units.

- Layout (2) 4-patch units as shown and sew units together, pressing seam in the direction of the arrow to make (1) 8-patch unit. Unit should measure

- Small Version 4-1/2" x 8-1/2"
- Large Version 9-1/2" x 18-1/2"



- Repeat previous (2) steps to make a total of (4) 8-patch Units.
- Layout (4) 4-patch units as shown and sew units together, pressing seams in the direction of the arrows to make (1) 16-patch unit. Unit should measure:

- Small Version 8-1/2" x 8-1/2"
- Large Version 18-1/2" x 18-1/2"



- Set aside the (4) remaining 4-patch units for use later.