
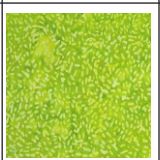
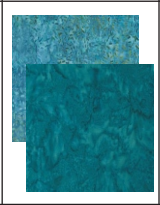


# “Feathered Star Sampler Revisited”

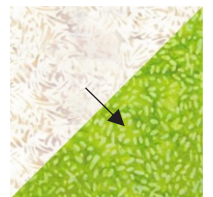
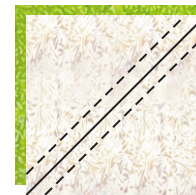
## Feathered Star

<p>Light Background</p>		<p>- (1) 9-1/4" x 9-1/4" Subcut in half diagonally both directions to make (4) QST's (A)          - (8) 4" x 4" (B)          - (20) 3" x 3" (C)          - (4) 2-7/8" x 2-7/8" Subcut in half diagonally once to make (8) HST's (D)          - (4) 2-1/2" x 12-1/2" (E)          - (8) 2-1/2" x 2-1/2" (F)</p>
<p>From the Med Lime Green cut:</p>		<p>- (8) 4" x 4" (B)          - (4) 3-3/8" x 3-3/8" (G)          - (20) 3" x 3" (C)          - (4) 2-1/2" x 2-1/2" (F)*  <i>*For Week 7</i></p>
<p>From the Each of the Dk Teal &amp; Med Teal cut:</p>		<p>- (2) 7" x 7" Subcut in half diagonally once to make (4) HST's (H)          - (4) 2-1/2" x 6-1/2" (I)</p>



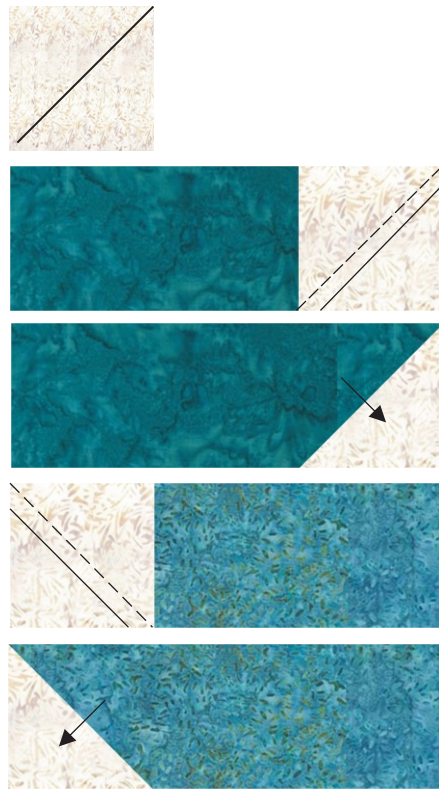
### Piecing Instructions

- Mark a diagonal line from corner to corner on the backside of:
  - (8) Background “B”
  - (20) Background “C”
- Layer (1) Background “B” Square on top of (1) Med Lime Green “B” Square as shown.
- Sew 1/4” seam on both sides of the drawn line.
- Cut in half on the diagonal line, pressing in the direction of the arrow to make (2) Large HST Blocks Square blocks up to 3-3/8” x 3-3/8”
- Repeat previous (3) steps to make a total of:
  - (16) Large HST’s
  - (40) Small HST’s using Background “C” and Med Lime “C” Squares. Square up to 2-1/2” x 2-1/2”

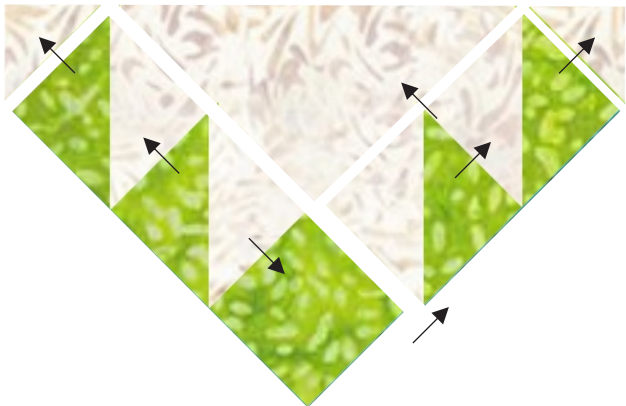


*Note: these will be used in Week 7*

- Mark a diagonal line from corner to corner on the backside of (8) Background “F” Squares as shown.
- Layer (1) Background “F” square on top of (1) Dk Teal “I” Rectangle (right side) as shown, paying attention to orientation of the drawn line.
- Sew on the drawn line and trim 1/4” from sewn line, pressing in the direction of the arrows make (1) Left Unit. Unit should measure 2-1/2” x 6-1/2”
- Repeat previous (2) steps to make a total of (4) Left Units
- Layer (1) Background “F” square on top of (1) Med Teal “I” Rectangle (left side) as shown, paying attention to orientation of the drawn line.
- Sew on the drawn line and trim 1/4” from sewn line, pressing in the direction of the arrows make (1) Right Unit. Unit should measure 2-1/2” x 6-1/2”
- Repeat previous (2) steps to make a total of (4) Right Units



- Layout: (4) Large HST’s (1) Background “A” QST  
(2) Background “D” HSTs  
(1) Med Lime Green “G” as shown.



- Sew units together, pressing seams in the direction of the arrows to make (1) Unit A.

- Layout: (1) Unit A (1) Dk Teal “H” HST  
(1) Med Teal “H” HST  
(1) Background “E” as shown.  
(1) Left Unit (1) Right Unit as shown.

- Sew units together, pressing seams in the direction of the arrows to make (1) Feathered Star Block.

*Note: The two bottom seams are pressed open to relive bulk*

- Block should measure 12-1/2” x 12-1/2”.

- Repeat previous (5) steps to make a total of (4) Feathered Star Blocks

