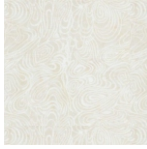
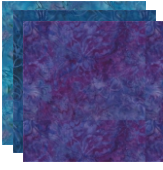
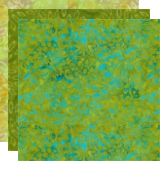



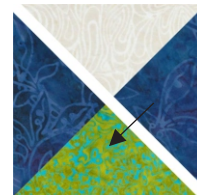
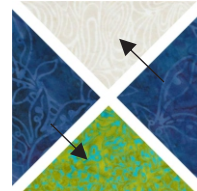
# Summer Solstice Sampler Week 9

Light Background		- (12) 3-1/2" x 3-1/2". Subcut in half diagonally both directions to make a total of (48) QST's (A) - (48) 2-1/2" x 2-1/2" (B) - (4) 6-1/2" x 6-1/2" (C) - (4) 6-1/2" x 12-1/2" (D)
From Assorted Blues cut a total of		- (24) 3-1/2" x 3-1/2". Subcut in half diagonally both directions to make a total of (96) QST's (A)
From Assorted Greens cut a total of		- (12) 3-1/2" x 3-1/2". Subcut in half diagonally both directions to make a total of (48) QST's (A)
From Assorted Prints cut a total of		- (12) 2-1/2" x 2-1/2" (B)

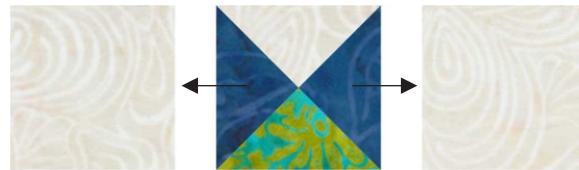


## Piecing Instructions

- Layout: (1) Light Background "A" QST  
(2) Blue "A" QST  
(1) Green "A" QST
- Sew QST's together along the short side, pressing in the direction of the arrows to make (2) Pieced HST's
- Sew Pieced HST's together along the long side, pressing in the direction of the arrow to make (1) QST Unit.  
Square QST Unit up to 2-1/2" x 2-1/2".
- Repeat previous (3) Steps to make a total of (48) QST Units.

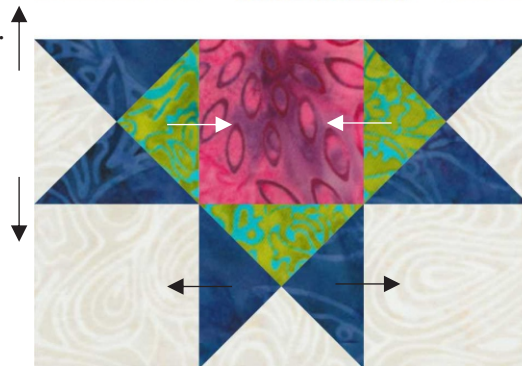


- Layout (4) QST Units, (4) Background “B” Squares, and (1) Assorted “B” Squares as shown.



- Sew units into rows, pressing seams in the direction of the arrows.

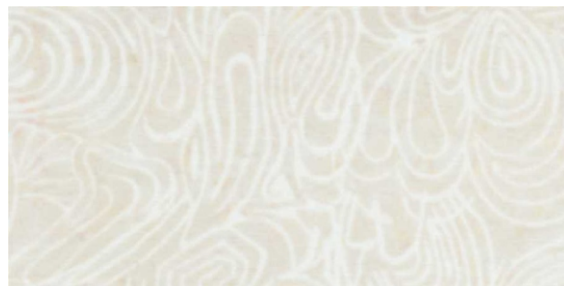
- Sew rows together, pressing seams in the direction of the arrows to make (1) Week 8 Block.  
Block should measure 6-1/2” x 6-1/2”



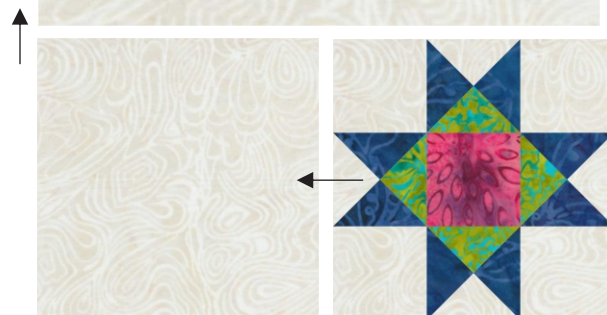
- Repeat previous (3) Steps to make a total of (12) QST Units.

- Layout (1) Week 8 Block, (1) Background “C”, and (1) Background “A” as shown.

- Sew units into rows, pressing seams in the direction of the arrows.



- Sew rows together, pressing seams in the direction of the arrows to make (1) Corner Unit.  
Unit should measure 12-1/2” x 12-1/2”



- Repeat previous (3) Steps to make a total of (4) Corner Units.