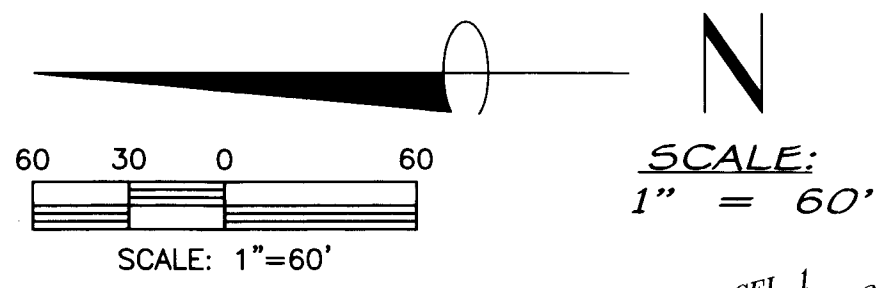


BELLA RIDGE ESTATES

A REPLAT OF PARCEL 1 - PARTITION PLAT 2010-017
 NE1/4 SECTION 30, T8N, R9W, W.M.
 CLATSOP COUNTY, OREGON
 APRIL 4, 2018

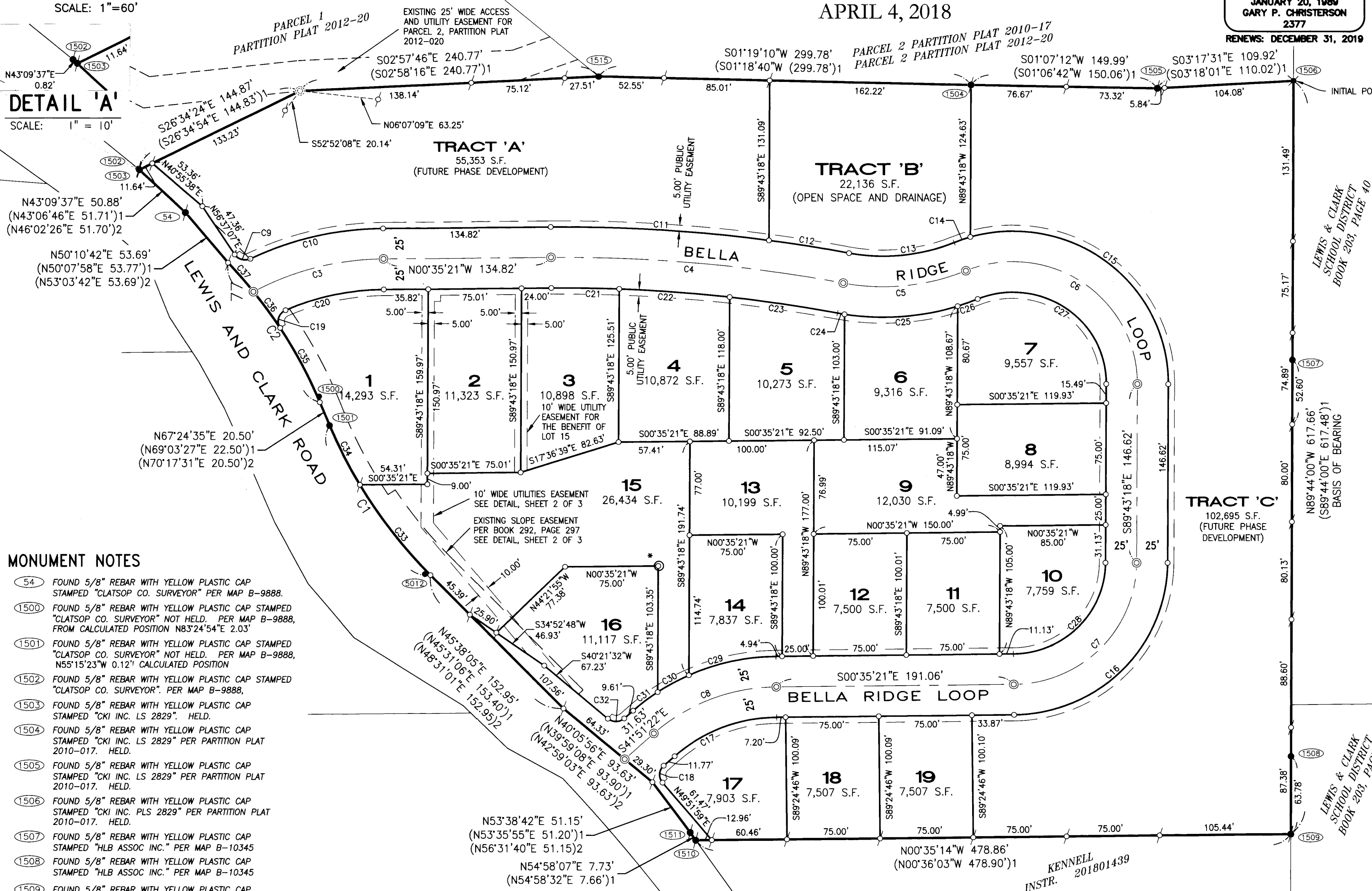
REGISTERED PROFESSIONAL LAND SURVEYOR
Gary P. Christerson
OREGON
JANUARY 20, 1989
GARY P. CHRISTERSON
2377
 RENEWS: DECEMBER 31, 2019

Otak
 • SURVEYING
 • CIVIL ENGINEERING
 • PLANNING
 • WATER & NATURAL RESOURCES
 • WETLAND CONSULTING
CLATSOP COUNTY
 4253-A HWY 101 N.
 GEARHART, OR 97138
 (503) 738-3425
 FAX: (503) 738-7455
TILLAMOOK COUNTY
 PHONE (503) 368-5394
PACIFIC COUNTY
 PHONE (360) 642-4454
 WWW.OTAK.COM



- LEGEND**
- ⊙ INDICATES RIGHT-OF-WAY GEOMETRY POINT, MONUMENT NOT SET.
 - ⊕ INDICATES SET 5/8" REBAR 30" IN LENGTH WITH YELLOW PLASTIC CAP STAMPED "OTAK INC."
 - INDICATES 5/8" REBAR 30" IN LENGTH WITH YELLOW PLASTIC CAP STAMPED "OTAK INC." TO BE POST MONUMENTED ON OR BEFORE APRIL 3, 2019. * S&F LAND SERVICES
 - ⊗ INDICATES 3" MAG NAIL WITH 1-1/2" STEEL WASHER STAMPED "OTAK INC." TO BE POST MONUMENTED ON OR BEFORE APRIL 3, 2019. * S&F LAND SERVICES
 - ◆ INDICATES FOUND MONUMENT AS NOTED AND HELD FOR CONTROL.
 - INDICATES FOUND MONUMENT AS NOTED NOT HELD FOR CONTROL.
 - ⊗ INDICATES 5/8" REBAR NOT FOUND, PER PARTITION PLAT 2012-020.
 - (XXXX) INDICATES MONUMENT NUMBER SEE MONUMENT NOTES
 - ()1 INDICATES RECORD PARTITION PLAT 2010-17
 - ()2 INDICATES RECORD OF SURVEY B-9888

DETAIL 'A'
 SCALE: 1" = 10'



- MONUMENT NOTES**
- (54) FOUND 5/8" REBAR WITH YELLOW PLASTIC CAP STAMPED "CLATSOP CO. SURVEYOR" PER MAP B-9888.
 - (1500) FOUND 5/8" REBAR WITH YELLOW PLASTIC CAP STAMPED "CLATSOP CO. SURVEYOR" NOT HELD. PER MAP B-9888, FROM CALCULATED POSITION N83°24'54"E 2.03'
 - (1501) FOUND 5/8" REBAR WITH YELLOW PLASTIC CAP STAMPED "CLATSOP CO. SURVEYOR" NOT HELD. PER MAP B-9888, N55°15'23"W 0.12' CALCULATED POSITION
 - (1502) FOUND 5/8" REBAR WITH YELLOW PLASTIC CAP STAMPED "CLATSOP CO. SURVEYOR". PER MAP B-9888, HELD.
 - (1503) FOUND 5/8" REBAR WITH YELLOW PLASTIC CAP STAMPED "CKI INC. LS 2829". HELD.
 - (1504) FOUND 5/8" REBAR WITH YELLOW PLASTIC CAP STAMPED "CKI INC. LS 2829" PER PARTITION PLAT 2010-017. HELD.
 - (1505) FOUND 5/8" REBAR WITH YELLOW PLASTIC CAP STAMPED "CKI INC. LS 2829" PER PARTITION PLAT 2010-017. HELD.
 - (1506) FOUND 5/8" REBAR WITH YELLOW PLASTIC CAP STAMPED "CKI INC. PLS 2829" PER PARTITION PLAT 2010-017. HELD.
 - (1507) FOUND 5/8" REBAR WITH YELLOW PLASTIC CAP STAMPED "HLB ASSOC INC." PER MAP B-10345
 - (1508) FOUND 5/8" REBAR WITH YELLOW PLASTIC CAP STAMPED "HLB ASSOC INC." PER MAP B-10345
 - (1509) FOUND 5/8" REBAR WITH YELLOW PLASTIC CAP STAMPED "CKI INC. PLS 2829" PER PARTITION PLAT 2010-017. HELD.
 - (1510) FOUND 5/8" REBAR WITH YELLOW PLASTIC CAP STAMPED "CKI INC. PLS 2829" PER PARTITION PLAT 2010-017. HELD.
 - (1511) FOUND 5/8" REBAR WITH YELLOW PLASTIC CAP STAMPED "CLATSOP CO. SURVEYOR" PER MAP B-9888. HELD.
 - (5012) FOUND 5/8" REBAR WITH YELLOW PLASTIC CAP STAMPED "CLATSOP CO. SURVEYOR" PER MAP B-9888, BEARS N8°59'26"E, 0.86' FROM CALCULATED POSITION
 - (1515) FOUND 5/8" REBAR WITH PLASTIC CAP PER MAP B-12565 UNREADABLE UNDER TURBULENT WATER. BEARS S64°48'52"E 0.14' FROM CALCULATED POSITION

SHEET INDEX

MAPPING OF LOTS 1 THROUGH 19 AND TRACTS A THROUGH C	SHEET 1 OF 3
EXISTING EASEMENT AND POWER EASEMENT DETAIL	SHEET 2 OF 3
BASIS OF BEARING, NARRATIVE, SURVEYOR'S CERTIFICATE, PLAT NOTES, DECLARATION, ACKNOWLEDGEMENT, APPROVALS, CERTIFICATE OF COUNTY CLERK, AND CONDITIONS, COVENANTS, AND RESTRICTIONS	SHEET 3 OF 3

BOUNDARY CURVE TABLE

CURVE #	DELTA	RADIUS	LENGTH	BEARING	DISTANCE
C1	21°46'30"	389.26'	147.94'	N56°31'20"E	147.05'
(C1)1	21°40'23"	389.26'	147.24'	N56°43'58"E	146.37'
(C1)2		389.26'			
C2	20°42'14"	378.10'	136.63'	N57°03'28"E	135.88'
(C2)1	20°24'38"	378.10'	134.69'	N56°39'43"E	133.98'
(C2)2		378.10'			

ROAD CENTERLINE

CURVE #	DELTA	RADIUS	LENGTH	BEARING	DISTANCE
C3	027°48'58"	225.00'	109.23'	N14°29'50"W	108.16'
C4	011°17'24"	1200.00'	236.45'	N05°03'21"E	236.07'
C5	032°58'34"	175.00'	100.72'	N05°47'14"W	99.34'
C6	112°33'13"	100.00'	196.44'	N34°00'06"E	166.35'
C7	089°07'57"	100.00'	155.57'	S45°09'19"E	140.35'
C8	041°16'01"	150.00'	108.04'	S21°13'21"E	105.72'

LOT CURVE TABLE

CURVE #	DELTA	RADIUS	LENGTH	BEARING	DISTANCE
C9	82°35'16"	10.00'	14.41'	S15°19'29"W	13.20'
C10	25°22'48"	250.00'	110.74'	N13°16'45"W	109.84'
C11	8°14'21"	1225.00'	176.16'	N03°31'50"E	176.00'
C12	3°03'03"	1225.00'	65.23'	N09°10'32"E	65.22'
C13	32°58'34"	150.00'	86.33'	N05°47'14"W	85.14'
C14	6°21'53"	125.00'	13.89'	N19°05'34"W	13.88'
C15	106°11'20"	125.00'	231.67'	N37°11'03"E	199.91'
C16	89°07'57"	125.00'	194.46'	S45°09'19"E	175.43'
C17	41°16'01"	125.00'	90.03'	S21°13'21"E	88.10'
C18	88°16'39"	10.00'	15.41'	N85°59'41"W	13.93'
C19	99°01'45"	10.00'	17.28'	N73°29'21"W	15.21'
C20	23°23'08"	200.00'	81.63'	N12°16'55"W	81.07'
C21	2°39'54"	1175.00'	54.65'	N00°44'36"E	54.65'
C22	4°20'44"	1175.00'	89.12'	N04°14'55"E	89.10'
C23	4°16'45"	1175.00'	87.76'	N08°33'40"E	87.74'
C24	1°38'47"	200.00'	5.75'	N09°52'39"E	5.75'
C25	26°24'08"	200.00'	92.16'	N04°08'48"W	91.35'
C26	4°55'39"	200.00'	17.20'	N19°48'41"W	17.19'
C27	112°33'13"	75.00'	147.33'	N34°00'06"E	124.76'
C28	89°07'57"	75.00'	116.67'	S45°09'19"E	105.26'
C29	23°40'52"	175.00'	72.33'	S12°25'47"E	71.82'
C30	9°23'24"	175.00'	28.68'	S28°57'55"E	28.65'
C31	8°11'45"	175.00'	25.03'	S37°45'29"E	25.01'
C32	82°12'54"	10.00'	14.35'	S00°44'55"E	13.15'
C33	13°45'06"	389.26'	93.43'	N52°30'38"E	93.20'
C34	8°01'24"	389.26'	54.51'	N63°23'53"E	54.46'
C35	10°24'48"	378.10'	68.72'	N62°12'11"E	68.62'
C36	5°33'34"	378.10'	36.69'	N54°13'00"E	36.67'
C37	4°43'52"	378.10'	31.22'	N49°04'17"E	31.21'

EXACT COPY
 I DO HEREBY CERTIFY THAT THIS IS A FULL, COMPLETE AND TRUE COPY OF THE ORIGINAL PLAT.
 BY: *Gary P. Christerson*
 CLATSOP COUNTY CLERK
 I, GARY P. CHRISTERSON, DO HEREBY CERTIFY THAT THIS IS A FULL, COMPLETE AND TRUE COPY OF THE ORIGINAL PLAT.
Gary P. Christerson
 GARY P. CHRISTERSON, PLS 2377