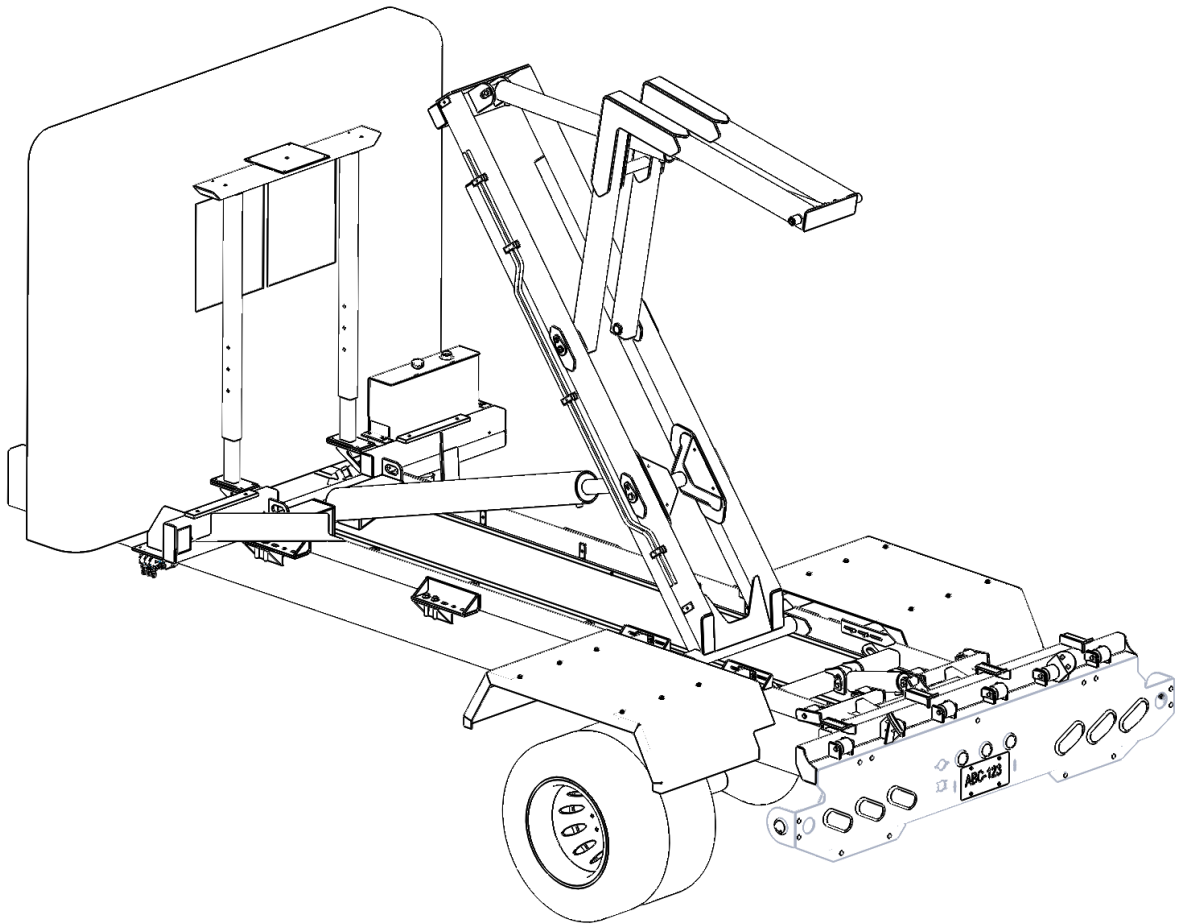


# KARGO KING

## Parts Manual



## Reading the Kargo King Serial Plate

**C6      -      14                      V300                      0040**

<b>Model Number</b>	<b>Length of System</b>	<b>Version Level</b>	<b>Serial Number</b>
C2 = CTwo system	8 = 8' long system	V100 = Version 1.00	These 4 digits are the serial number
C5 = CFive system	11 = 11' long system	V200 = Version 2.00	
C6 = CSix system	125 = 12'6" long system	V300 = Version 3.00	
	14 = 14' long system		
	18 = 18' long system		

- This Style of Serial Plate was implemented June - July 2020

### Version 1.00

Original version of the system

### Version 2.00

Upgraded to Hard Hydraulic Lines running along the Main and Subframe

Upgraded to New Galtech Hydraulic Valve

### Version 3.00

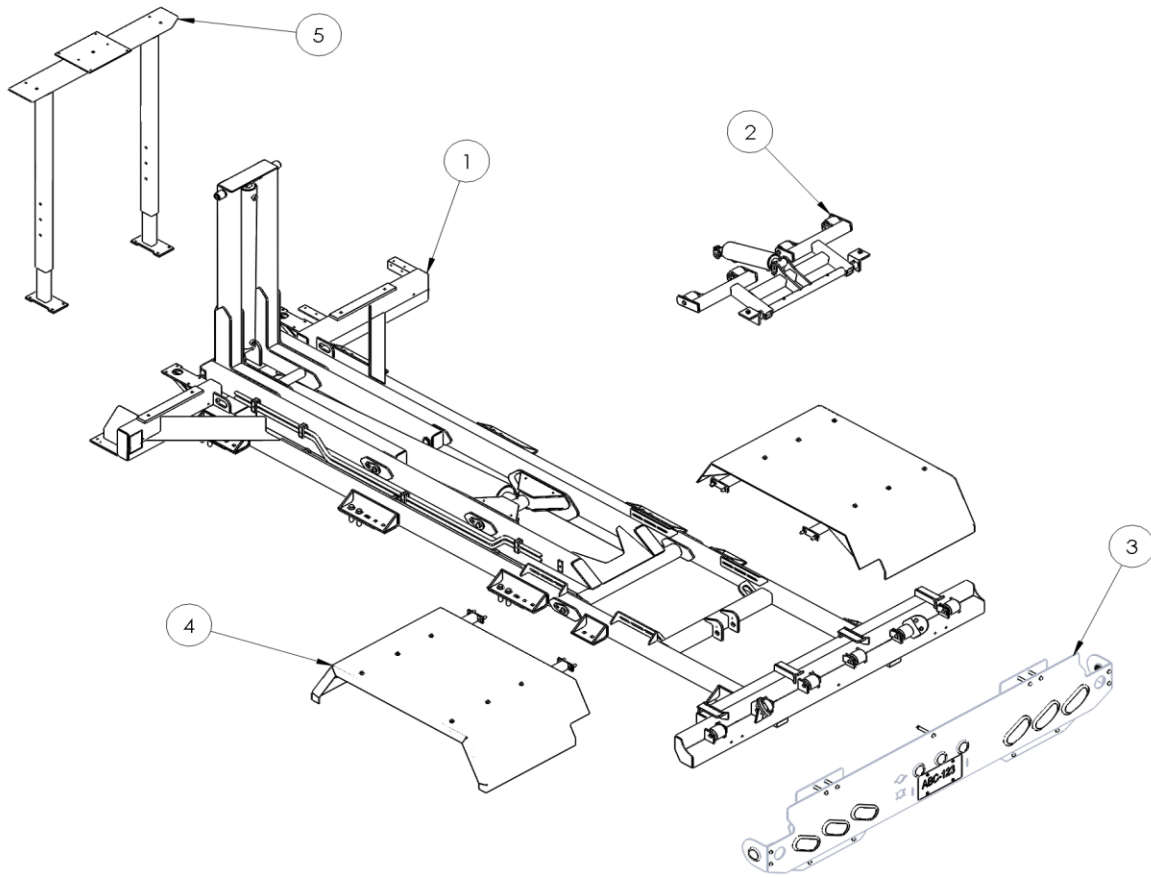
Upgraded to New Mounting Brackets along subframe

Upgraded to New Mounting Brackets for Fenders on Subframe

Upgraded to New Mounting Plate for Galtech Valve (no need for adaptor plate)

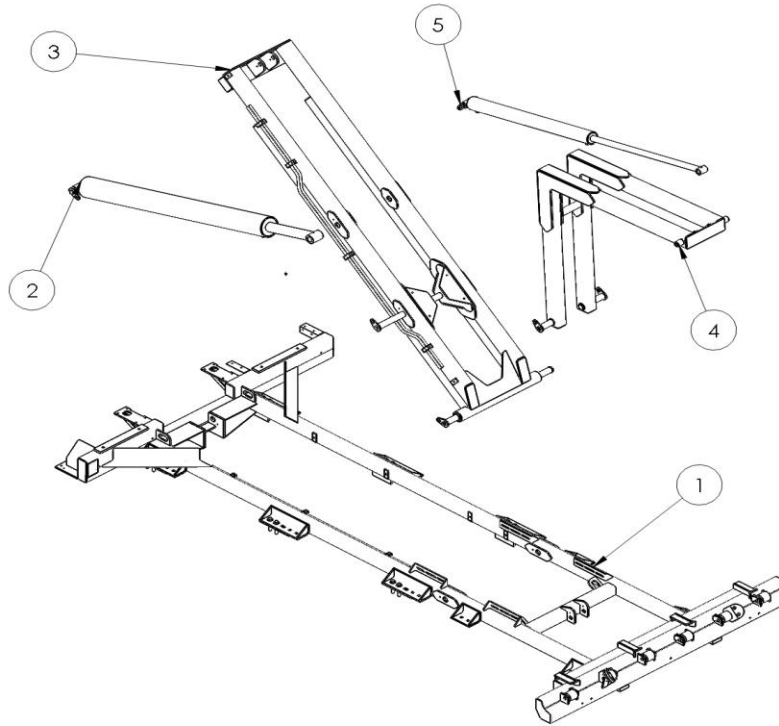
Moved Rear Moving Hooks forward so they won't interfere with the Hoses on the CSix 11' system

## Kargo King Subframe & Accessories



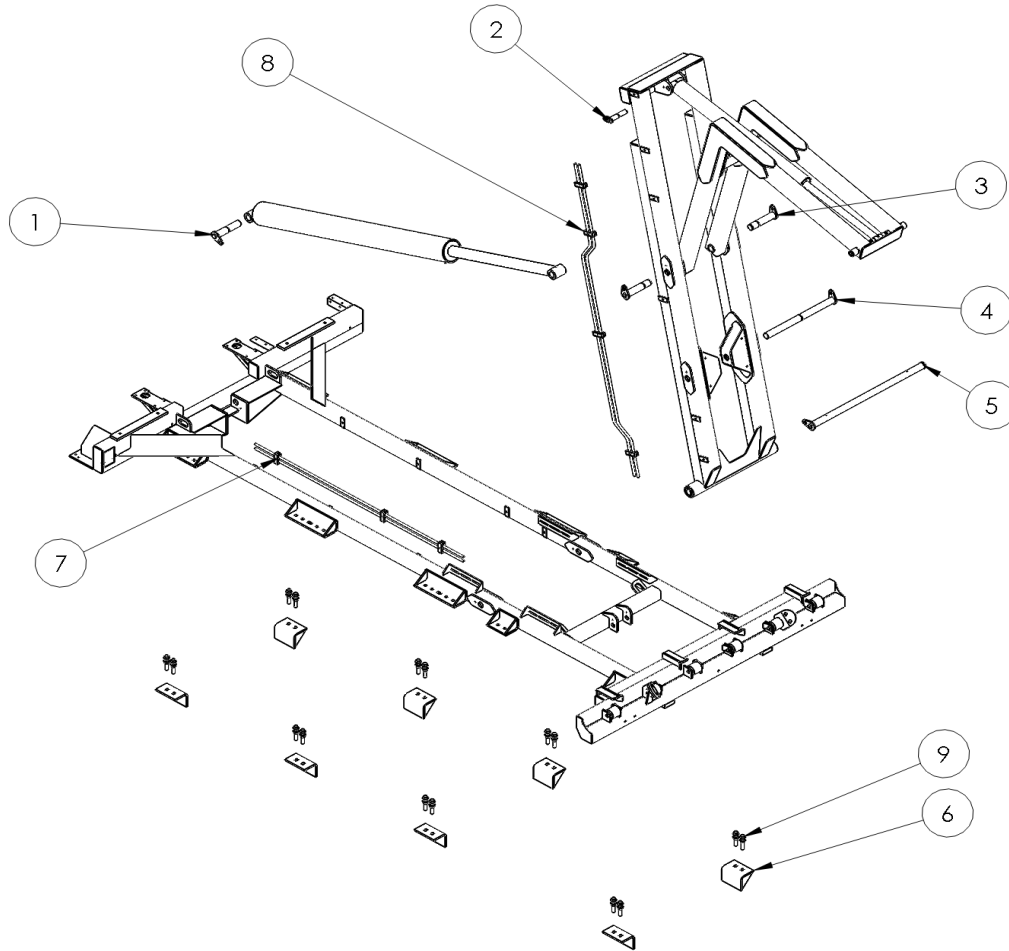
ITEM NO.	PART NUMBER	RE V.	DESCRIPTION	QTY.
1	KK 11' SF - 12K Rated System - KK-12-110-12 KK 11' SF C5- 08K Rated System - KK-08-110-12V KK 12.5' SF- 12K Rated System - KK-12-125-14 KK 14' SF- 12K Rated System - KK-12-140-16 KK 18' SF- 12K Rated System - KK-12-180-21		KARGO KING ROLL-OFF SYSTEM	1
2	0807842 + 0807848 + 0310919		DOCK LEVELER ASSY - KIT	1
3	KK12971	0	KARGO KING LIGHT BUMPER	1
4	30-30FEN-SA-KLP (Tire Size 30") 37-30FEN-SA-KLP (Tire Size 37")	0	FENDER ASSEMBLY	2
5	0807867	7	PYLON LIGHT BAR ASSY	1

## 1.1 Kargo King Part Numbers & Nomenclature



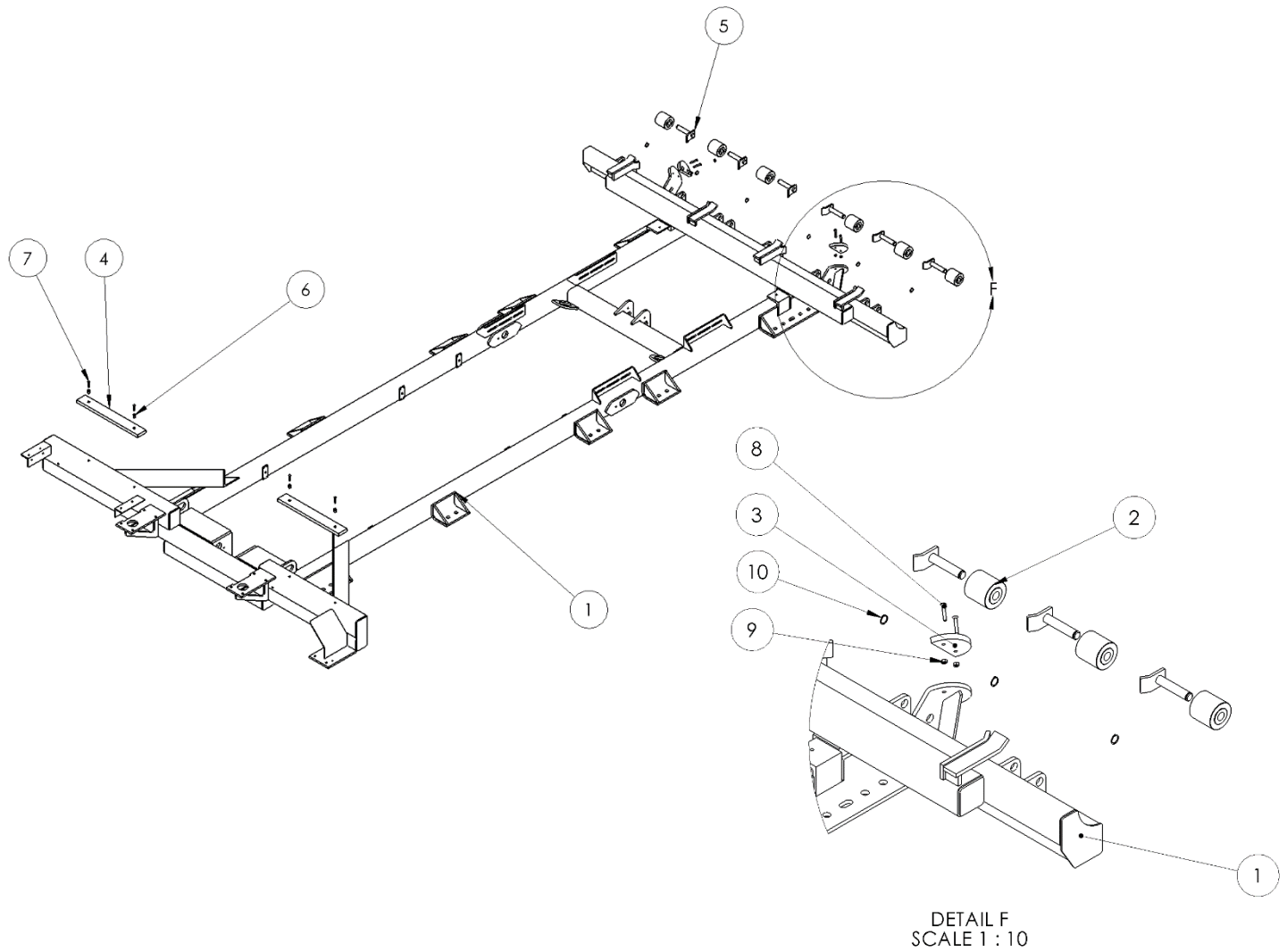
ITEM NO.	PART NUMBER	DESCRIPTION	QTY.
1	KK 11' SF - 12K Rated System – 0807887 KK <b>C5</b> -11' SF - 08K Rated System – 0807921 KK 12.5' SF - 12K Rated System – 0807839 KK 14' SF - 12K Rated System – 0807887 KK 18' SF - 12K Rated System – 0807924	SUBFRAME ASSEMBLY	1
2	11' – 0311054 11' <b>C5</b> - 0316004 12.5' – 0310917 14' – 0311053 18' – 0316002	LIFT ARM CYLINDER	1
3	11' – 0807892 11' <b>C5</b> - 0807931 12.5' – 0807839 14' – 0807887 18' – 0807887	LIFT ARM	1
4	FOR 11', 12.5', 14' – 0807841 11' <b>C5</b> - 0810250 18' – 0807925	JIB ARM	1
5	FOR 11', 11'- <b>C5</b> , 12.5', 14' - <b>0310918</b> 18' - <b>0316001</b>	JIB CYLINDERS	1

**1.2 Kargo King Part Numbers & Nomenclature (Continue ....)**



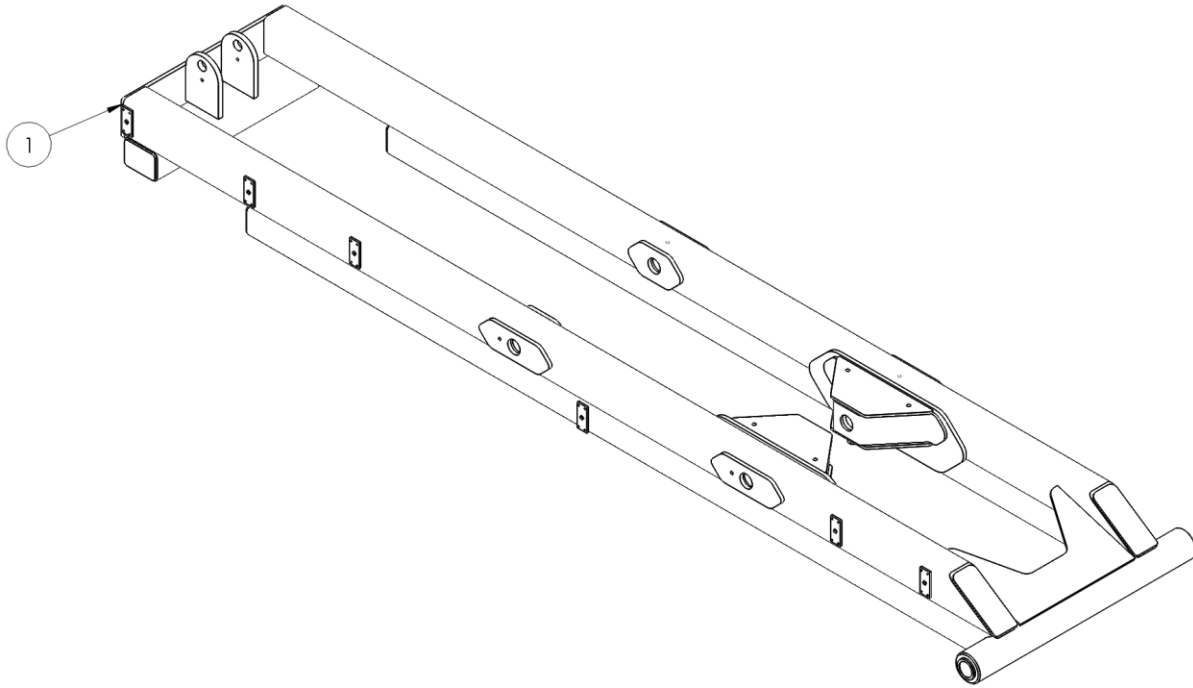
ITEM NO.	PART NUMBER	DESCRIPTION	QTY.
1	0807854	1.5" CYL PIN (LIFT CYLINDER TO SUBFRAME)	1
2	0807853	1" PIN (JIB CYLINDER TO LIFT ARM)	1
3	0807851	PIN JIB PIVOT (JIB ARM TO LIFT AM)	2
4	0807858	MAIN LIFT CYLINDER PIN (LIFT CYLINDER TO LIFT ARM)	1
5	0807850	PIN-MAIN LIFT PIVOT (LIFT ARM TO SUBFRAME)	1
6	0807907	MTG BRCKET LOOSE (REFER INSTALLATION MANUAL FOR QTY)	
7	0725054-110-SA 0725054-125-SA 0725054-140-SA 0725054-180-SA	HARD PIPE ASSEMBLY FOR SUBFRAME FOR – 11' SF - 12.5' SF - 14' SF - 18' SF	1
8	0725036-110-SA 0725036-110-LD-SA 0725036-125-SA 0725036-140-SA 0725036-180-SA	HARD PIPE ASSEMBLY FOR LIFT ARM FOR – 11' SF - C5 - 11' SF - 12.5' SF - 14' SF - 18' SF	1
9	5/8" HARDWARE KIT	HARDWARE KIT AS PER LOOSE BRKT QTY (5/8" BOLT, NUT AND WASHERS)	

**1.1.1 KARGO KING 11'/11'- C5/12.5'/14'/18' SUBFRAME ASSEMBLY**



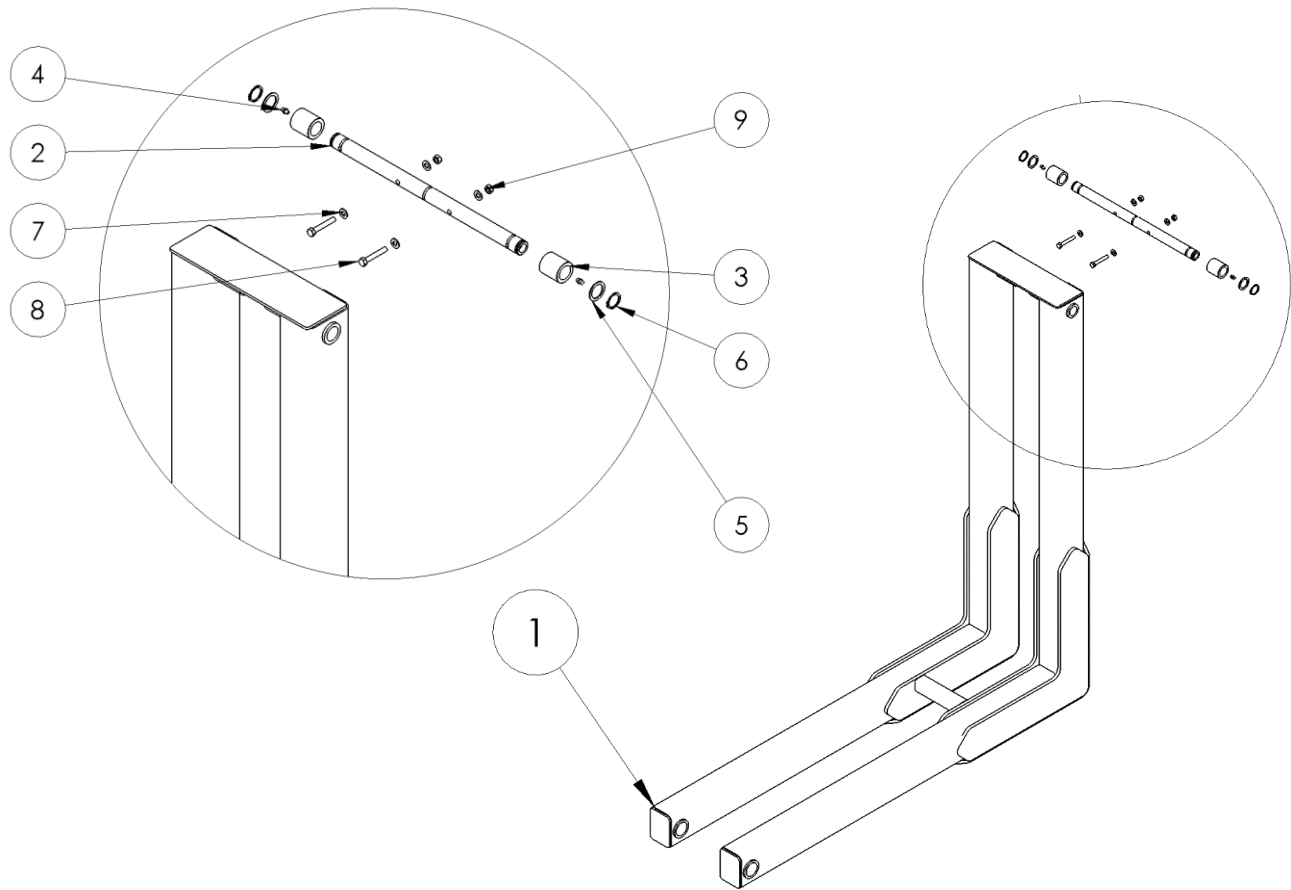
ITEM NO.	PART NUMBER	REV.	DESCRIPTION	QTY.
1	11' - 0807904/ 11' C5 - 0807921 12.5' - 0807839/ 14' - 0807887/ 18' - 0807924	NA	SUBFRAME WELDMENT	1
2	0723852	0	*KARGO KING ROLLER	6
3	0310935	0	PAD -DECK CENTERING	2
4	0311045-1-DPI	0	PAD-KL FRONT DECK	2
5	0807855	0	*ROLLER PIN ASSY	6
6	95105A147	0	RIVET NUT-SF FRNT PAD MOUNT	4
7	CSBOLT 0.2500-20x1.25x0.75		CSBOLT 1/4"-20 X 1.25L GR.8	4
8	CSBOLT 0.2500-20x1.5x0.75		CSBOLT 1/4"-20 X 1.5L GR.8	4
9	HNUT 0.2500-20-D-N		HNUT 1/4"-20 GR.8	4
10	97633A250	0	3/4" EXTERNAL CIRCLIPS	6

**1.1.3 LIFT ARM**



ITEM NO.	PART NUMBER	REV.	DESCRIPTION	QTY.
1	11' SF - 0807892	NA	LIFT ARM WELDMENT	1
	C5 - 11' SF - 0807931			1
	12.5' SF - 0807840			1
	14' SF - 0807888			1
	18' SF - 0807928			1

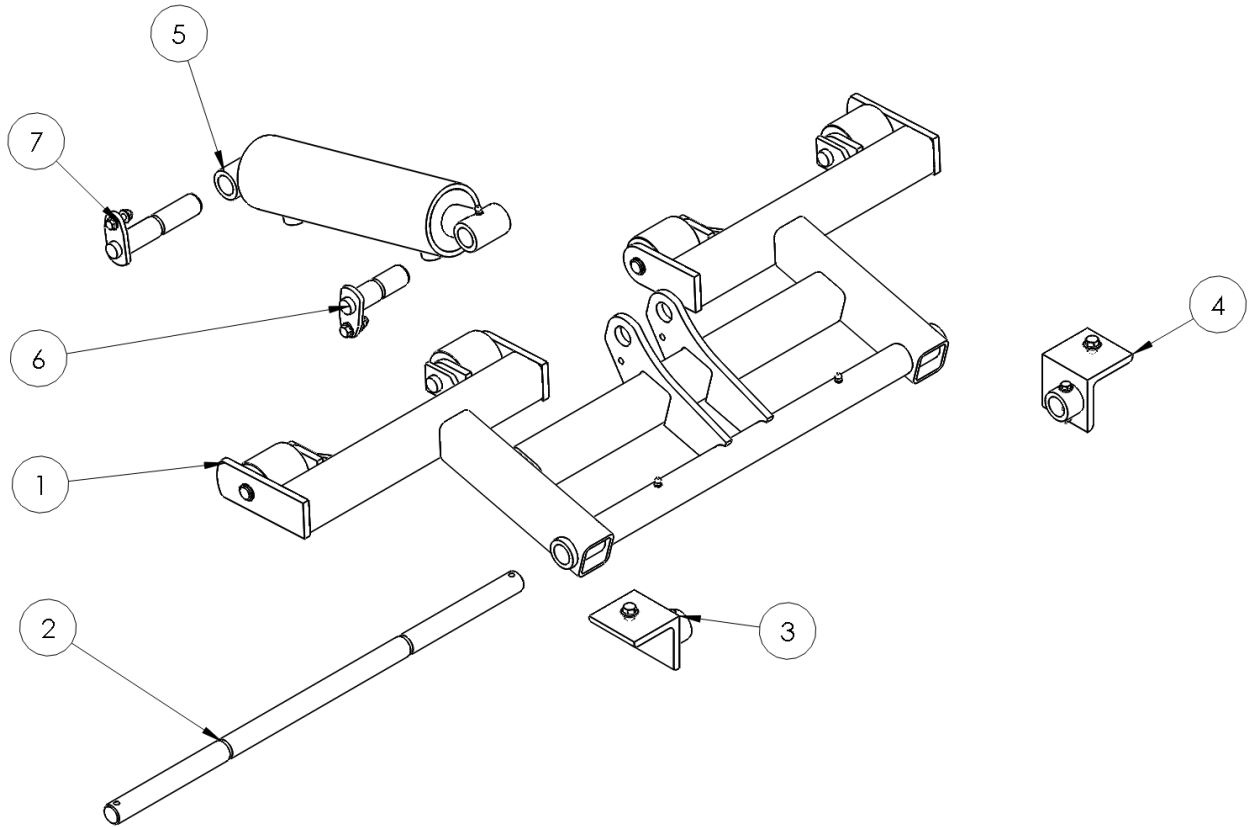
### 1.1.4 JIB ARM



ITEM NO.	PART NUMBER	REV.	DESCRIPTION	QTY.
1	11',12.5' & 14' SF - 0807841 C5 11' SF -0810250 18' - 0807925	NA	JIB ARM WELDMENT	1
2	0723881	0	PIN -LIFT PIVOT	1
3	0310938	0	*BEARING – MAIN LIFT	2
4	0300113	0	1/4"- 28 STR GREASE FITTING	2
5	0723912	0	*WASHER	2
6	9056098	0	1" EXTERNAL CIRCLIPS	2
7	Preferred Narrow FW 0.3125		WASHER 5/16"	4
8	HBOLT 0.3125-18x2x0.875-N		HBOLT 5/16-18 X 2 L GR.8	2
9	HNUT 0.3125-18-D-N		HNUT 5/16-18 GR.8	2

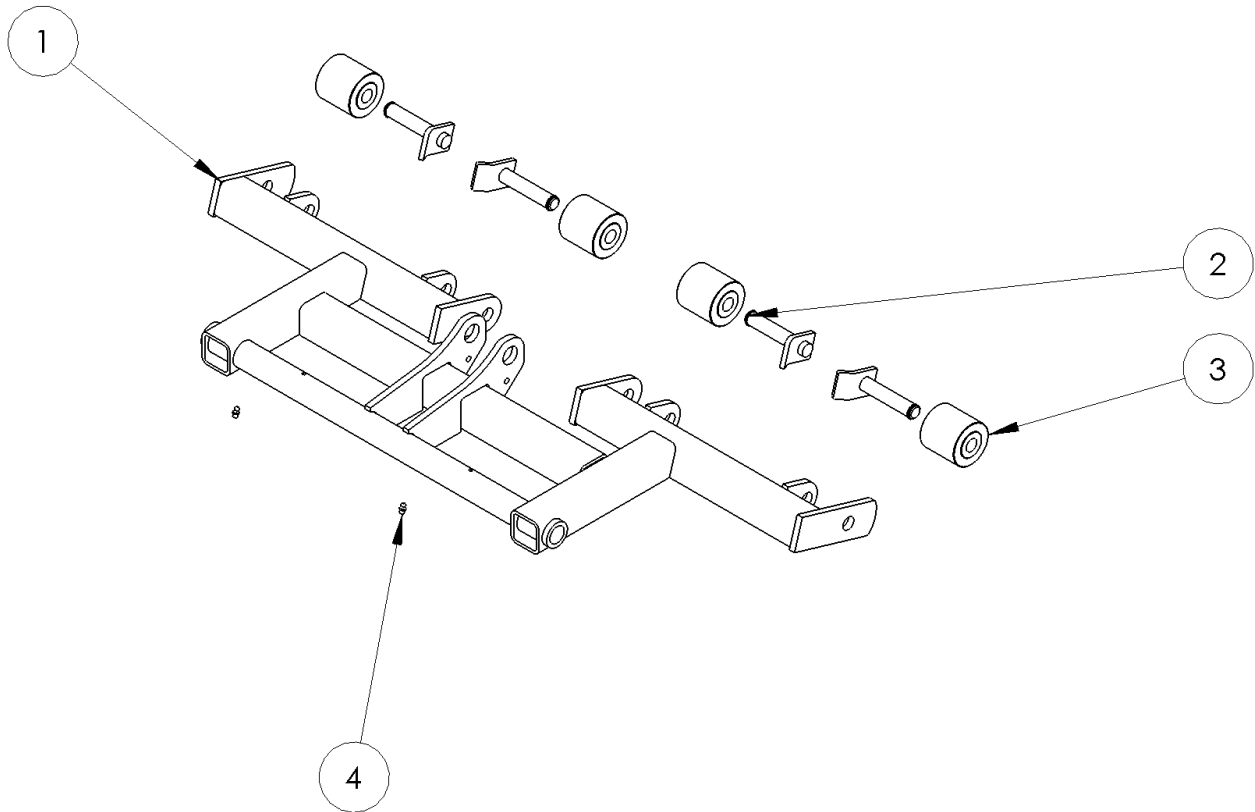
ITEM NO.	PART NUMBER	REV.	DESCRIPTION	QTY.
1.2.1	0807854	0	1.5" CYL PIN (LIFT CYLINDER TO SUBFRAME)	1
	5/16"-18 X 1-1/2" Gr.5		5/16' HEX HEAD CAP SCREW	1
	5/16"-18 LOCK NUT		5/16" LOCK NUT	1
	5/16" WASHER		5/16" FLAT WASHER	2
1.2.2	0807853	0	1" PIN (JIB CYLINDER TO LIFT ARM)	1
	¼-20"x 1-1/2" Gr.5		¼' HEX HEAD CAP SCREW	2
	¼-20 LOCK NUT		¼" LOCK NUT	2
	¼" WASHER		¼" FLAT WASHER	4
1.2.3	0807851	0	PIN JIB PIVOT (JIB ARM TO LIFT AM)	2
	3/8"-16 X 5/8" GR. 5		3/8" HEX HEAD CAP SCREW	2
	3/8" WASHER		3/8" FLAT WASHER	2
1.2.4	0807858	0	MAIN LIFT CYLINDER PIN (LIFT CYLINDER TO LIFT ARM)	1
	3/8"-16 X 5/8" GR. 5		3/8" HEX HEAD CAP SCREW	1
	3/8" WASHER		3/8" FLAT WASHER	1
1.2.5	0807850	0	PIN-MAIN LIFT PIVOT (LIFT ARM TO SUBFRAME)	1
	3/8"-16 X 5/8" GR. 5		3/8" HEX HEAD CAP SCREW	2
	1/8" NPT STR		1/8 NPT GREASE FITTING	2
1.2.8	0725054-110-SA 0725054-125-SA 0725054-140-SA 0725054-180-SA	0	HARD PIPE ASSEMBLY FOR SUBFRAME (PLEASE ASK FOR DRAWINGS & DETAILS)	1
1.2.9	0725036-110-SA 0725036-110-LD-SA 0725036-125-SA 0725036-140-SA 0725036-180-SA	0	HARD PIPE ASSEMBLY FOR LIFT ARM (PLEASE ASK FOR DRAWINGS & DETAILS)	1

## 2. DOCK LEVELER ASSEMBLY - KIT



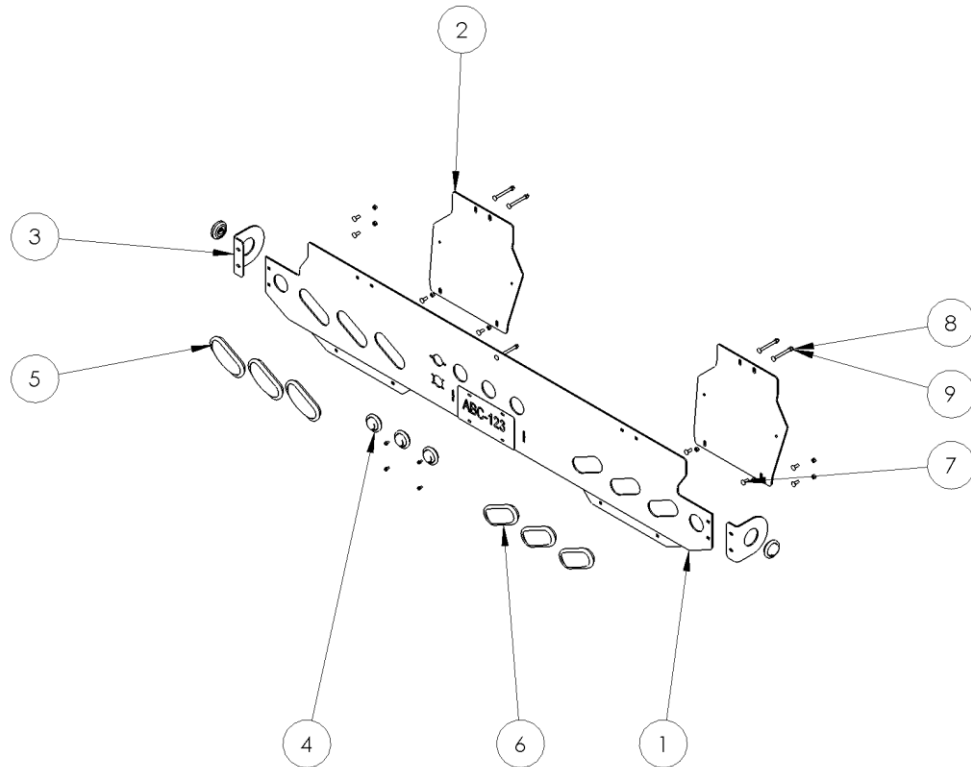
ITEM NO.	PART NUMBER	REV.	DESCRIPTION	QTY.
1	0807842-SA	0	DOCK LEVELER ASSEMBLY	1
2	0723884	0	PIN – DOCL LEVELER PIVOT	1
3	0807848	1	DOCK LEVELER MOUNT BRACKET LH	1
4	0807849	1	DOCK LEVELER MOUNT BRACKET RH	1
5	0310919	0	DOCK LEVELR CYLINDER	1
6	0807856	0	DL PIN CYLINDER ROD END	1
	5/16"-18 X 1-1/2" Gr.5		5/16' HEX HEAD CAP SCREW	1
	5/16"-18 LOCK NUT		5/16" LOCK NUT	1
	5/16" WASHER		5/16" FLAT WASHER	2
7	0807853	0	DL PIN CYLINDER ROD END	1
	¼-20"x 1-1/2" Gr.5		¼' HEX HEAD CAP SCREW	1
	¼-20 LOCK NUT		¼" LOCK NUT	1
	¼" WASHER		¼" FLAT WASHER	2

## 2.1 DOCK LEVELER ASSEMBLY



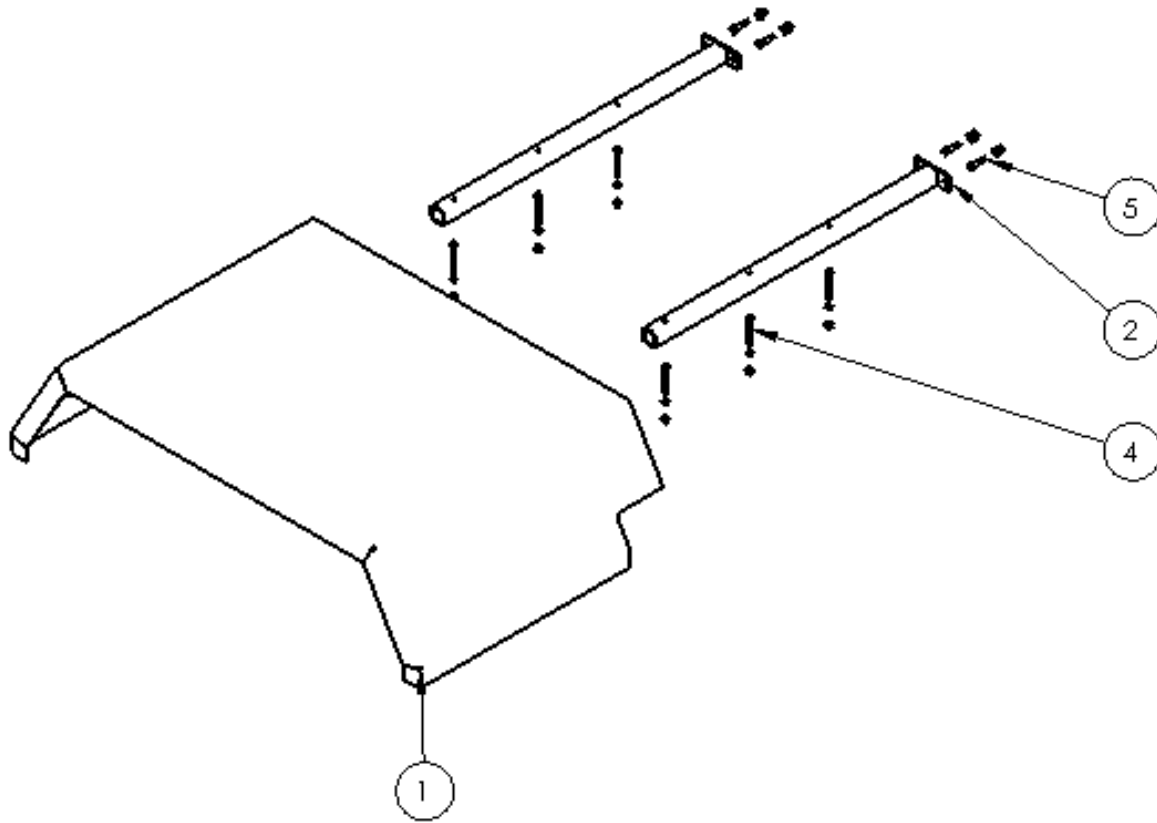
ITEM NO.	PART NUMBER	REV.	DESCRIPTION	QTY.
1	0807842	0	DOCK LEVELER WELDMNT	1
2	0807855	0	ROLLER PIN ASSY	4
3	0723852	0	KARGO KING ROLLER	4
4	0300113	0	1/4"- 28 STR GREASE FITTING	2

### 3. KARGO KING LIGHT BUMPER



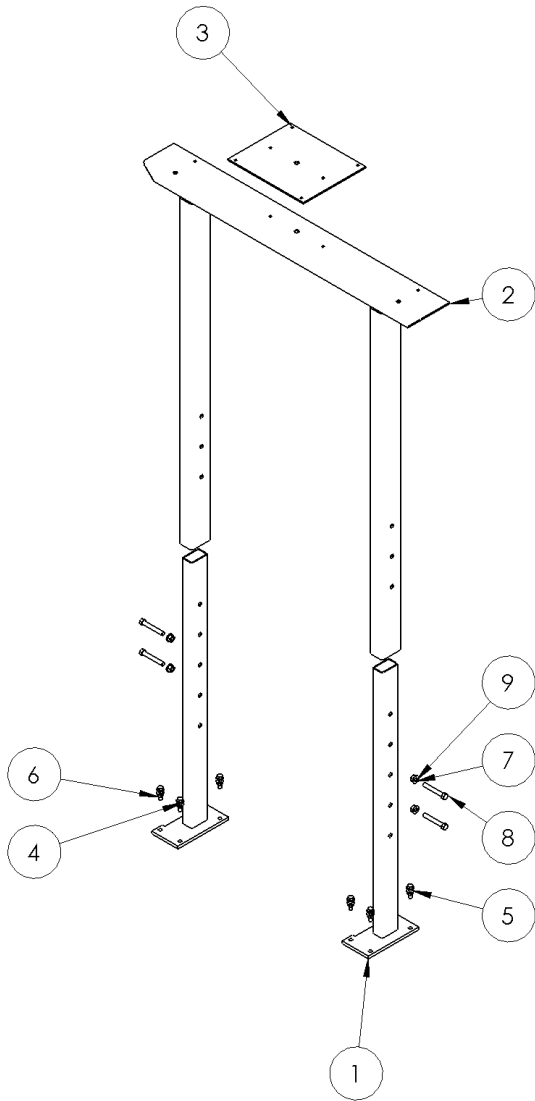
ITEM NO.	PART NUMBER	REV.	DESCRIPTION	QTY.
1	KK12971-PLT	0	KARGO KING BUMPER PLATE	1
2	KK12971-GU	0	KARGO KING BUMPER GUSSET	2
3	KK12971-EC	0	KARGO KING BUMPER ENDCAP	2
4	GR2000		2" LIGHT/WITH GROMMET	5
5	GR2238		LIGHT/WITH GROMMET	4
6	GR2238-C		LIGHT/WITH GROMMET	2
7	RHSNBOLT 0.375-16x1x1-N	-	RHS BOLT	8
8	RHSNBOLT 0.375-16x4x1-N	-	RHS BOLT	5
9	70712	-	3/8"-16 SS NUT	13
10	IN-HWMS 0.25-20x0.5x0.5-N	-	BOLT	4

**4. KARGO KING FENDER ASSEMBLY**



ITEM NO.	PART NUMBER	REV.	DESCRIPTION	QTY.
1	30-30FEN-SA-KLP 37-30FEN-KLP	1	FENDER BRACKET 37X30 TOP	1
2	0807941	0	FENDER TUBE SUB-ASSY	2
3	HBOLT 5/16"-24x2.75-N GR.8/NUT/WASHER		5/16" BOLT KIT GR. 8	6
4	HBOLT 3/8"-24x1.5x1-N GR.8		3/8" BOLT KIT GR. 8	4

## 5. KARGO KING LIGHT PYLON BAR



ITEM NO.	PART NUMBER	REV.	DESCRIPTION	QTY.
1	0807899	2	LIGHT BAR BOTTOM ASSY	2
2	0807899	0	LIGHT BAR TOP SA	1
3	0725033	0	PLATE TOP MTG LIGHTBAR	1
4	Preferred Narrow FW 0.375YZ		3/8" FLAT WASHER YZ	16
5	HBOLT 0.3750-24x1.375x1-N		HEX BOLT 3/8"-24 X 1-3/8" L	8
6	HNUT 0.3750-24-D-N GR.8		HNUT 3/8"-24 GR.8	8
7	Preferred Narrow FW 0.4375YZ		7/16" FLAT WASHER	4
8	HBOLT 0.4375-14x3x1.125-N		7/16"-14 x 1.125 HEX BOLT	4
9	HNUT 0.4375-14-D-N		7/16-14 NUT	4



Note: This manual is subjected to change without any notification.

**PROPRIETARY AND CONFIDENTIAL:**

**THE INFORMATION CONTAINED IN THIS DOCUMENT/DRAWING IS THE SOLE PROPERTY OF DRIVE PRODUCTS INC. ANY REPRODUCTION IN PART OR AS A WHOLE WITHOUT THE WRITTEN PERMISSION OF DRIVE PRODUCTS INC IS STRICKLY PROHIBITED.**

Call our Customer service at 1-800-668-6012 for any inquires.

Drive Products  
1665 Shawson Dr  
Mississauga, Ontario  
Canada. L4W 1T7

<http://www.driveproducts.com/>