



**CTEZEED 25**

[www.Geminiindia.com](http://www.Geminiindia.com)

ISO 9001: 2015  
ISO45001: 2018

# ZED25

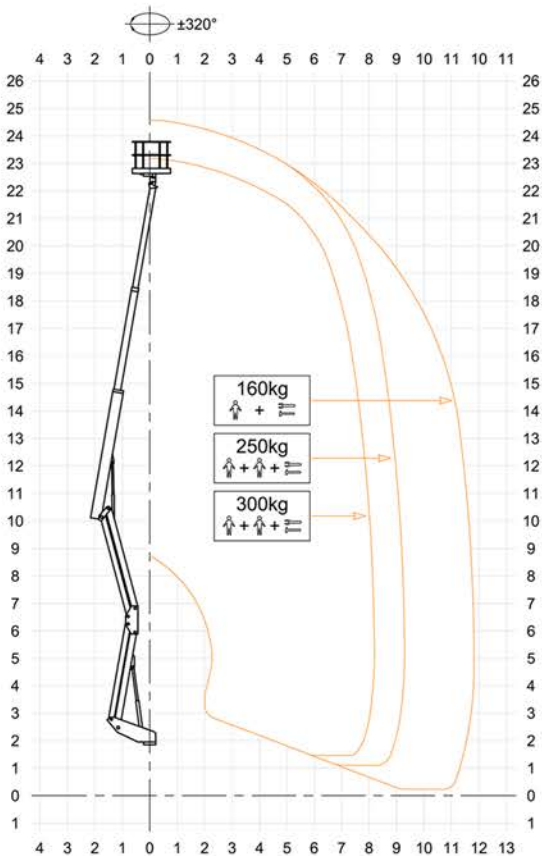
## TECHNICAL SPECIFICATIONS

Platform Height	24.70 m
Working Height	22.70 m
Weight Lifting Capacity	300 kg
Working Outreach	11.8 m
Basket Dimensions	1400 x 700 x 1170 mm
Basket material	Aluminium basket
Basket Levelling	Hydraulic actioned basket levelling
Basket Rotation	+/- 90°
Turret rotation	+/- 320°
Travelling Dimensions (L x H x W)	6.9 x 2.2 x 2.9 m
Recommended vehicle	Ashok Leyland Partner 6 Tyre
GVW	7200 kg
Min. WB	3955 mm
Boom Structure	Articulating+telescopic
Control Type	Proportional electro-hydraulic
Stabilizers	No. 4 hydraulic outriggers
Stabilizers	HS type
Maximum tolerated wind speed	12.5 m/sec

## FEATURES

- Compact dimensions
- Ergonomic boom design
- Made of SSAB Strenx high-strength steel
- Double pantograph facilitates passing over barriers
- Possibility of "leadwire" movements
- New electronic management system
- S3 smart stability system
- Basket load sensing device
- EN 280 CE certified
- Diagnostic control system
- No. 04 hydraulic outriggers A type
- 230V AC EC electric socket in the basket

## WORKING ENVELOPE



## OPTIONS

- Glass filled nylon base with fibre-glass frame
- Emergency manual pump
- Working light in the basket
- Hourmeter
- Anemometer in basket
- Flood light in the basket
- Beacon light
- Airline / waterline to basket

## Dimensions

