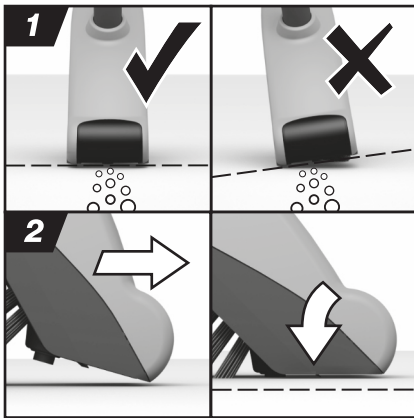


# IMPORTANT

## Please read these usage instructions carefully before using your new Easy Sweep broom.

The Easy Sweep is great for picking up small piles of dust and debris, but it is important to follow these simple steps to make sure the power brush collects the dust piles effectively. **It takes only a few minutes practice to pick up the piles quickly and easily!**



**First, try to sweep the debris on the floor into a line – its easier to pick everything up in one go this way.**

### Using the power brush.

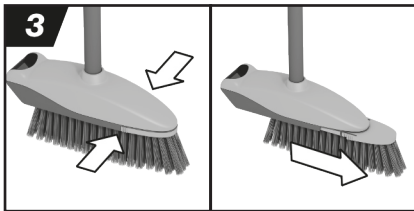
**1.** Tilt the broom and lay the front edge of the power brush flat and even against the floor a few inches away from the debris pile.

**2.** Pull the broom towards the debris, bringing the lower surface flat against the floor. As this happens the red smart switch is activated, starting up the power brush and lifting away the debris.



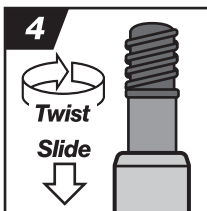
### A HANDY TIP

It is important to make sure the whole surface of the power brush is flat against the floor - this takes a few tries to get right but it is easy and effective once you get the hang of it.



### Emptying the debris compartment.

**3.** Over your dustbin, press the brush plate tabs inwards on both sides and slide the brush head out to release the dirt and debris.



### Inserting/changing the batteries.

**3.** Slide the brush plate out fully to reveal the battery compartment. Now press and slide the battery cover open.

### Extending the telescopic handle.

**4.** Always extend the handle before screwing it into the brush head.

For a video demonstration visit  
[www.kleensmart.co.uk](http://www.kleensmart.co.uk)