



Technical Information

Address: 3351 Sand Hollow Rd, Hurricane, UT 84737

Website: www.thetrailhero.com

General Information

Rich Klein:	President	530-409-4548	thetrailhero@gmail.com
Brandi Farra:	Project Manager	702-769-3259	brandifarra@gmail.com
Darillyn Southworth:	Production Manager	435-705-8786	darillyn@libertyentertainment.live
Gina Juliano:	Booking/Sponsorships	310-733-8602	ginaj25@gmail.com
Joe Duran	Lighting Designer	951-400-8643	djwho8802@gmail.com
Jeff Hardy	Audio Lead	435-669-7071	jeff@precision.productions
Steve Lemmon	Video Lead	435-313-3111	swlemmon@gmail.com



Trail Hero Music Fest is part of the Trail Hero event.

Join us to have the most fun you can have in 4-wheel drive! Come for one day or the whole week! This is one event you are sure to create a lot of memories and new friendships.

TRAIL HERO, sponsored by Monster Energy, is a family orientated off-roading event that takes place this October 2nd-7th, two hours north of Las Vegas in the beautiful Sand Hollow State Park (Utah). Trail Hero's off-roading event focuses on trail riding and rock crawling across amazing landscapes with large mountainscape backdrops.

CAMPING open NOW!!! All of this year's camping reservations will be ran through the Trail Hero website. Click the "[Camping at Trail Hero](#)" bock below to reserve your prime location for this year's event. There is no better place to be then front row to Utah's largest off-roading event. The beautiful State Park facilities offer full hook up, partial hook up, and primitive campsites. All campsite reservations are for one week, Sunday, October 1st- Sunday October 8th.

COMMUNITY OUTREACH PROGRAMS AND CHARITABLE EFFORTS

This is what it's all about! We are here with a major focus on how to help our community support the needs of our Veterans who fought for our freedoms and give special needs children and adults access to public lands. Our vehicles are their legs, an extension of their body, giving them the ability to enjoy the beauty of our lands through motorized access. Throughout the week of Trail Hero events are built to raise funds and awareness to our 501c3 beneficiaries. Click on the "**BECOME A HERO**" link above for more info on ways for you to become a hero by donating time, money, and/or resources during the week of Trail Hero.

BECOME A HERO is our charitable moto that highlights the charity aspect of the event. Our charity efforts have assisted over a 1000 special needs Riders and 4000 veterans over the last seven years. Our Heros volunteer their time to take veterans and special needs adults and children on trail rides, they volunteer their time to recover vehicles on trials, the volunteer to guide our trail riders through various levels of trails, they donate money by purchasing raffle tickets or purchasing spots in our charity golf tournament, and they do so much more for our community. Check back for more information on our new program "War Hero to Trail Hero"!

CHARITY GOLF TOURNAMENT

Trail Hero will host the eighth annual Charity Golf Tourney at the award winning [Sand Hollow Resort & Golf Course](#), benefiting 4Wheel to Heal. This is the only location that entails a **5 star resort retreat** complete with 18 hole golf course, villas, a restaurant, and spa services. We had a blast last year, and encourage anyone to join in, participate, heckle.... let's just say it's not your average golf tourney:

- Play the 18-hole course with a shotgun start
- Access to the driving range and putting green
- Additional challenges for participants to win prizes

[Become a Hero](#) by participating in this charity event. A percentage of the golfer registration fees, sponsorships, money raised through the raffles, and more help benefit 4 Wheel to Heal.

All Veterans will also get one FREE general admission ticket with proof of service. At the **TRAIL HERO MUSIC FEST**, October 5th-7th, you may hear several genres of music but they all have the same goal in mind. You will experience music that falls in line with our patriotic and off-roading culture. Trail Hero Music Fest's lake front, open air, concert venue is located across from Sand Hollow's beach. You'll want to park your 4WD vehicle in the drive-in section of the concert venue and put your toes in the sand while enjoying live music under the stars. Super VIP, VIP, Three Day, and Single Day Concert passes will be available soon. Tickets will be available for sale on: <https://thmf.ticketspice.com/trailheromusicfest>.

Check out the **140+ OFF-ROAD VENDOR SHOW** while you're waiting on the music to start. Watch off-roading events on the Jumbotron TVs, sign up for free SXS rides, try all the tasty food vendors, and more. We are working with our top of the line vendors to bring you show discounts and roll outs for new products.

FREE VENDOR SHOW AND CHARITABLE ACTIVITIES

Trail Hero brings the industry together with a very formidable vendor show that features:

- **Charitable Raffles** tickets for sale at Hero 4 a Day booth for over \$80,000 in raffle items provided by all the vendors
- **Over 140 world class vendors** featuring your favorite manufacturers from across the country. All with the ability to purchase products
- **Power Hour** - Major show discounts between the hours of 4pm-5pm Thurs-Sat
- **Monster sample stage** with daily line dancing lessons from The Crew
- **Food Vendors**

SAND HOLLOW STATE PARK IS A 4-WHEEL DRIVE MECCA FOR OFF-ROADING ENTHUSIASTS

To understand this event, you must first look at the world class facility of Sand Hollow, in Hurricane, Utah. It is a mecca for 4-wheel drive enthusiasts and offers:

- Various terrain from mild to wild
- **Thousands of all-access, off-road acreage** embedded with trails ranging from Mild to Wild
- New trails continually being built
- **Lake access year-round**
- Both **dry and wet camping** facilities
- **Very off-road friendly City of Hurricane**, only 3 miles away all make this a prime location such as hotels, RV campsites, grocery stores, gas stations, restaurants, and more!

TRAIL RIDING, & ROCK CRAWLING, & BONFIRES OH MY!!!

Trail Hero concentrates on a 5-day **Trail Ride** that is designed to keep the entertainment flowing. After the trails are done for the day, participants can take part or watch our afternoon activities that include:

- Attempting to conquer the Amateur **Rock Crawl** event
- Break new ground on the hardest trail in the country at the Trail Breaker
- Party at the beach and hang out at the nightly bonfire behind our concert venue

THE TRAIL HERO HUNT

Hunt 4 Prizes and Trail Hero provides Trail Hero attendees with a self-guided Sand Hollow State Park tour that helps you, your family, and/or friends explore iconic locations and beautiful views while qualifying for prize drawings worth thousands of dollars for FREE. The Trail Hero Hunt is a virtual scavenger hunt allows participants to qualify for FREE prize drawings. Play any time, any day before October 7th. You can play for FREE or double your odds of winning even BIGGER prizes by boosting your registration for only \$25! Official rules and more information online at TrailHeroHunt.com

Simply put, no single event has ever had every aspect of our sport on one platform until now!

Sand Hollow State Park: 3351 Sand Hollow Rd, Hurricane, UT 84737

Trail Hero takes place at Sand Hollow State Park in Hurricane, Utah.

The beautiful red rocks and rolling red sand hills near the lake make for a beautiful venue surrounded by mountains and lots of sunshine. The 1,322-acre Reservoir and extensive off highway vehicle recreation area on Sand Mountain includes campsites, riding trails, water activities, and an assortment of adventure rentals nearby making it an ideal host for Trail Hero.



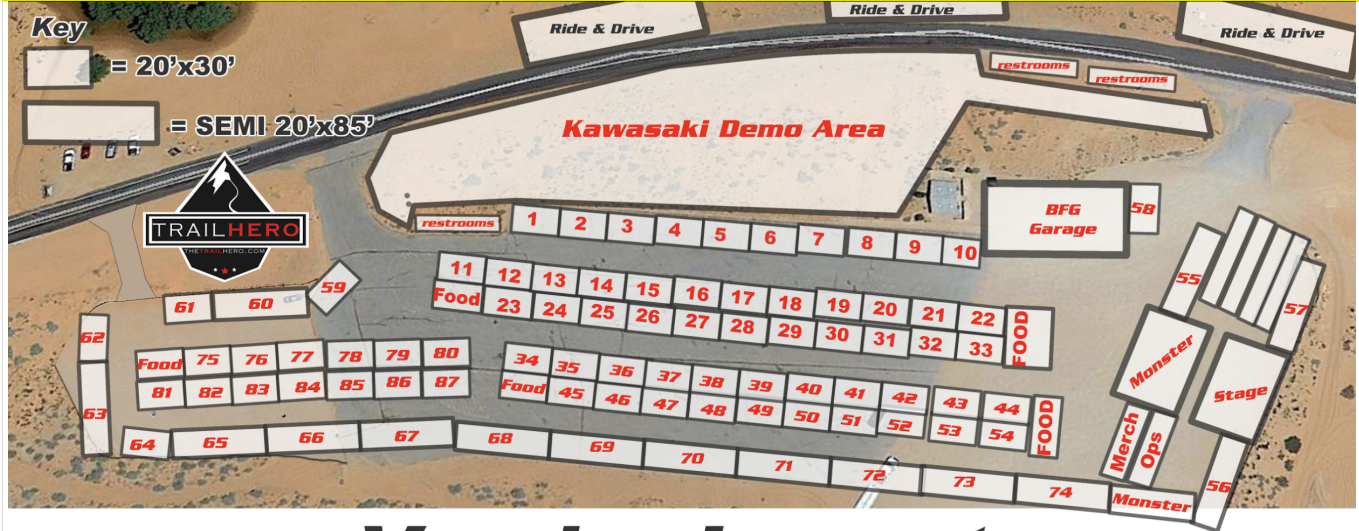


Sand Hollow State Park is 23 minutes from the St. George Airport (SGU)





EXPO LAYOUT



Vendor Layout



Loading Information

Backstage area will be fenced off with security at the entrance gate. Artists may pull into the secure area to unload gear at their designated time on the production schedule. Artist guests are not allowed backstage unless pre-approved and carrying provided credentials.

**No dock, No ramp, No forklift on site.
Stair access to stage (left and right).**

Stage Dimensions

The Stage is a Stage Line 440, roughly 32' X 24' without utilizing the top level and tent. Main stage is covered with uncovered thrust extension and wing for DJ position.

**** Full Tech Drawings *included*.**

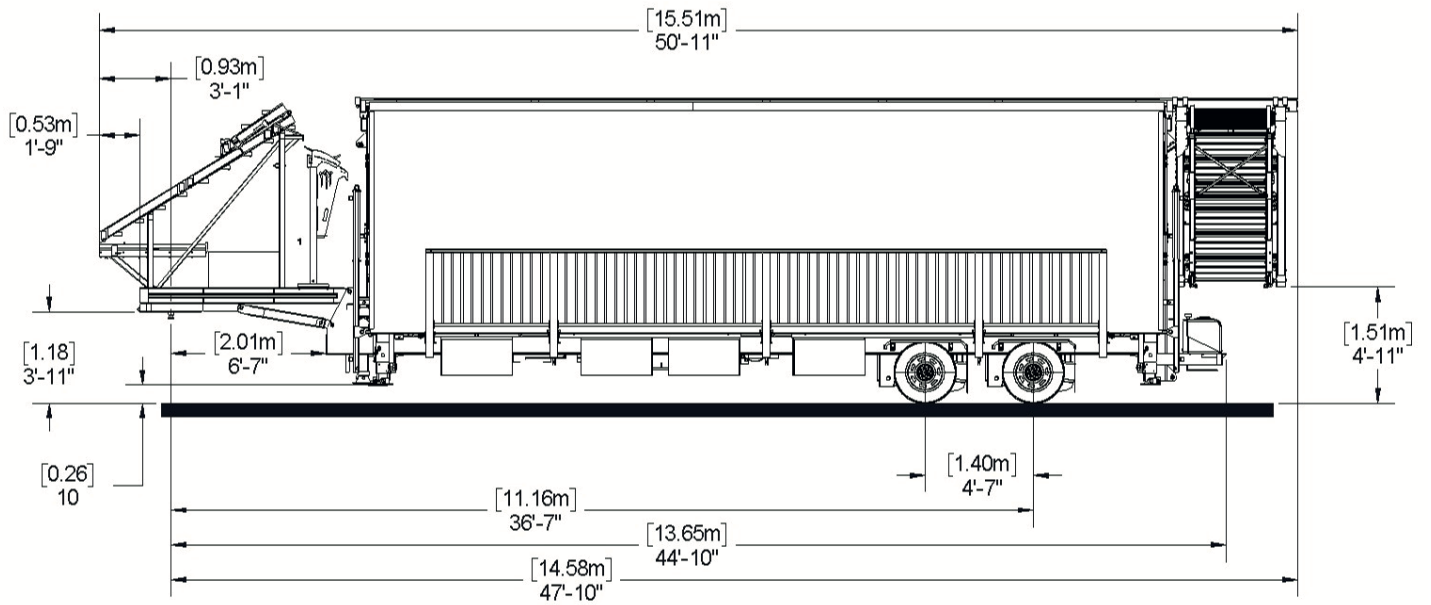
All stage power is run on a generator, No Shore Power.



STAGE
LINE

PROMOBILE
TECHNICAL DRAWINGS
ADDITIONAL INFORMATIONS
#430 & #440
2016

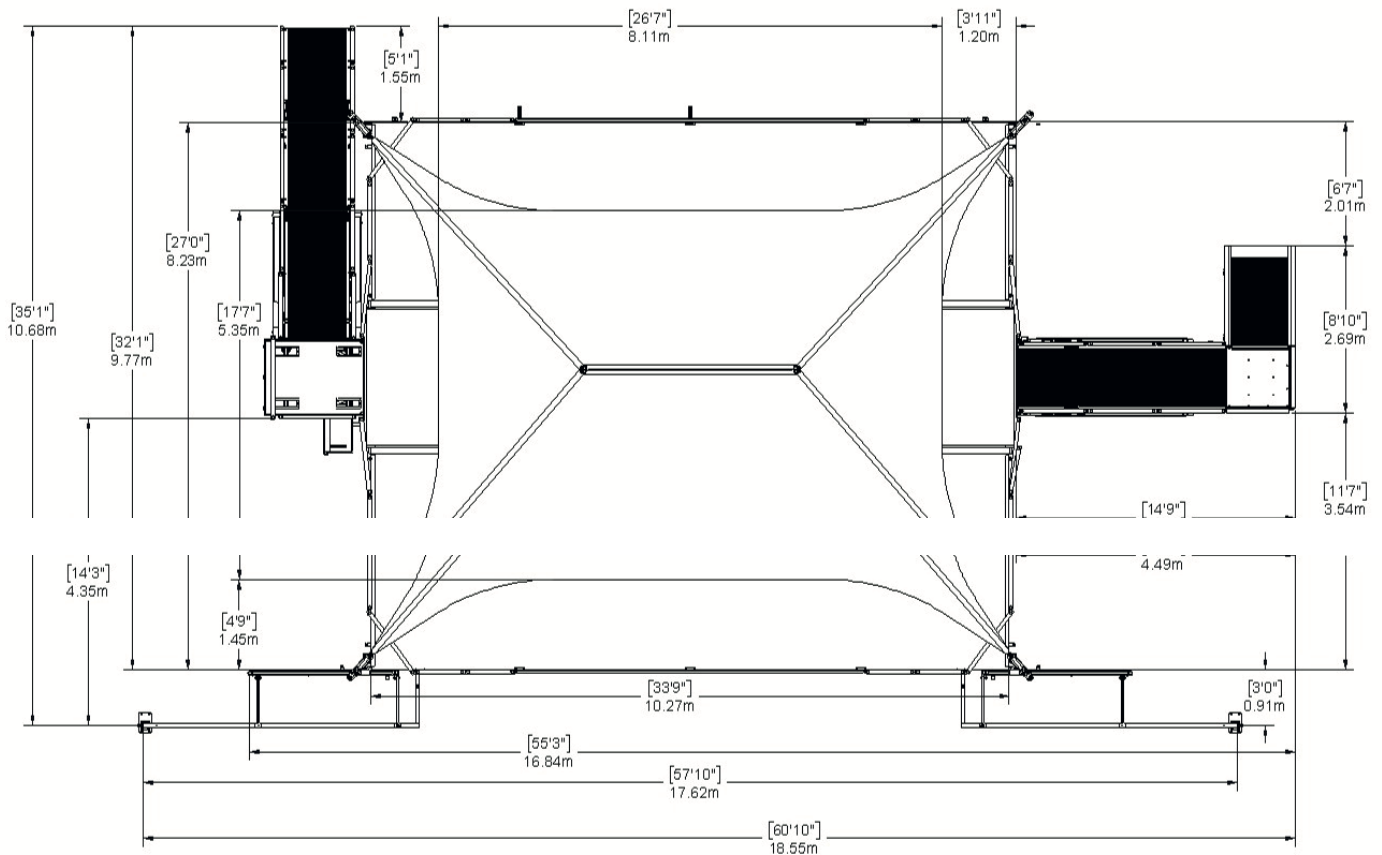
trailer side view

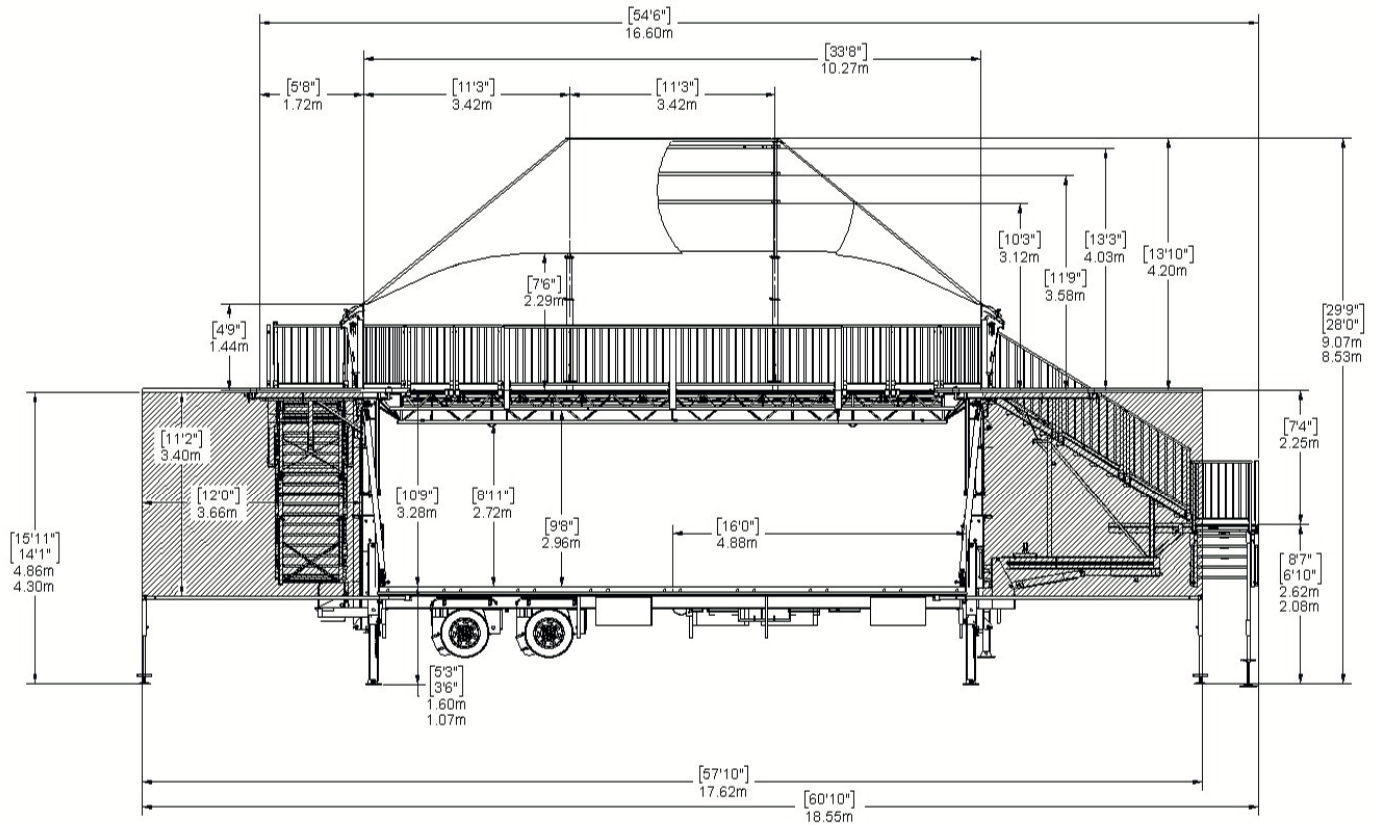


Drawings may show stage equipped with optional accessories. May be sold separately.

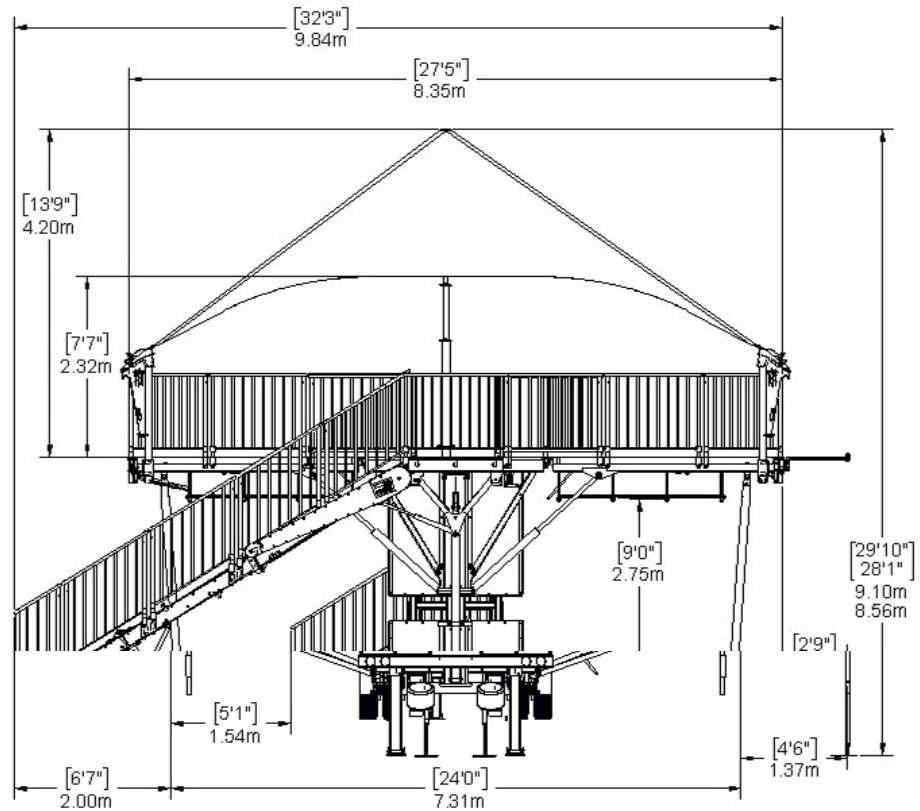
stageline.com | info@stageline.com 5.

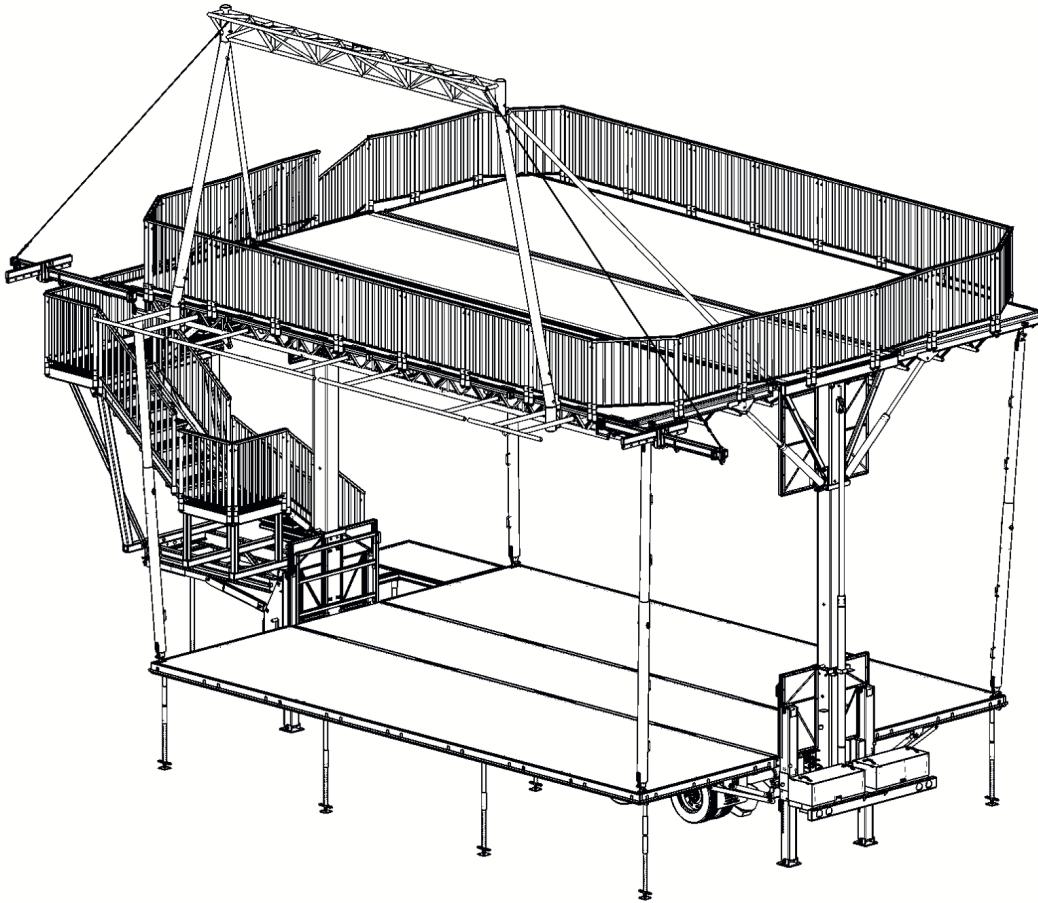
top view with tent





side view low position





A thorough understanding of the inter-related loadings shown in this rigging plan is needed in order to safely use this mobile stage roof and take full advantage of the many rigging opportunities it offers.

This mobile stage roof offers a variety of rigging options with regard to load capacity, placement and type.

There are rigging pipes, trusses, roof rigging points and side overhang rigging beams.

This rigging plan locates and defines these rigging features, includes load capacity for each and describes maximum combinations of loads amongst features.

Take note of exclusions, maximum sub-totals in a group, load balance requirements, maximum lifting capacity of roof and maximum rigging load on roof.

The maximum load on the roof is less than the sum of the maximum load on each rigging feature.

Refer to Operator's Manual for procedures in regards to proper setup and setup methods of the stage and its options.

The information contained in the current document are final and must be considered as such. They are derived from design briefs and summarized to help the user plan rigging configurations safely. It is therefore mandatory that the user follows and respects the capabilities and limitations described herein. Overloading of stage components above their specified capacity may result in structural failure, equipment damage, injury or death. Stageline cannot be held responsible if the user, himself or subcontractors under his supervision, derogate from this document and/or the approved rigging plan. If a desired configuration cannot meet these requirements, the user must contact Stageline to analyse the case and obtain further instructions. Special restrictions and limitations may apply.

Certain authorities may require that a rig configuration plan, signed and sealed by a recognized member of a professional body, be available to allow the stage to be setup on their territory. This document was not intended to and cannot be used or considered as an official document or certificate to serve this purpose. Contact responsible authorities or Stageline for details.

Rigging Restrictions

- **MAXIMUM LOAD BEARING CAPACITY:** 29 500 lb (13 379 kg). All corner posts must be installed and pinned, and telescopic columns pinned and secured. Mezzanine is not in use.
- Load on P17 FOHs must be uniformly distributed, with a maximum load of 350 lb (159 kg).
- Load on P22 FOHs must be concentrated at steel hook (location shown on diagram).
- Total load of both P17s and P22s must not exceed 2000 lb (908 kg).
- Never use trusses T1C concurrently with P16s. Never use T1s, T1C or P16 when the tent is installed on the upper floor.
- Never use trusses T6 and T7 concurrently.
- Never use P18 or P19 concurrently with P20 or P21 on any side.
- Total load of P18 to P21 on each side must not exceed 2225 lb (1009 kg) once all corner posts have been installed and lateral banners are installed. Capacity can be increased to 2500 lb (1134 kg) if all corner posts are installed and lateral banners are not installed.
- Never use Downstage truss T2, P17 and P22 when screen support is installed.

LIFTING RESTRICTIONS

- **MAXIMUM LIFTING CAPACITY :** 12 000 lb (5443 kg).
- Maximum asymmetric load difference between downstage and upstage roof panels must not exceed 2600 lb (1179 kg) including loads on T1 and T1C trusses.
- When lifting, make sure loads are evenly divided between right and left side of roof.
- Raise screen only when roof is lifted with corner posts and telescopic columns pinned and secured.



Audio Information

Preliminary Audio Design:

PA

Line Array L'Acoustics, D&B, JBL, or similar with subs
Front fills
FOH console – Avid Profile or Yamaha CL5 or similar

Monitors

8ch IEM Sennheiser G4 or similar
12" bi-amped wedges
Monitor console – Avid Profile or Yamaha CL5 or similar

Mic Package

- Assorted instrument and vocal mics
- Four RF mics, Shure QLXD or similar
- XLR cable
- Sub snakes
- Mic Stands

Stage Power

Stage power for instruments

Staff

FOH Engineer
Monitor Engineer
A2



Lighting

Preliminary Light Design:

- (4) Rogue Outcast 1 hybrid
- (18) Rogue Outcast 1L beam
- (6) Sharpy beams
- (18) 18X18 LED RGBW par
- (9) Colordash par H12 IP
- Ion XE20, ETCnomad Puck, or similar

*** Lighting plot will listed equipment or similar*



Video

Preliminary Video Design:

- Two 17' X 10' LED walls Stage left & right (*dimensions may vary*)
- iMag package/Camera operators
- Trailer high trim 17' X 10' LED Wall (vendor village)
- Trail Hero Sponsorship loops
- Live broadcast motor vehicle sports
- Camera production trailer

*** preliminary video package, may be equal to or similar*



