

RE
MARK
ABLE.

 lappato
COLLECTION

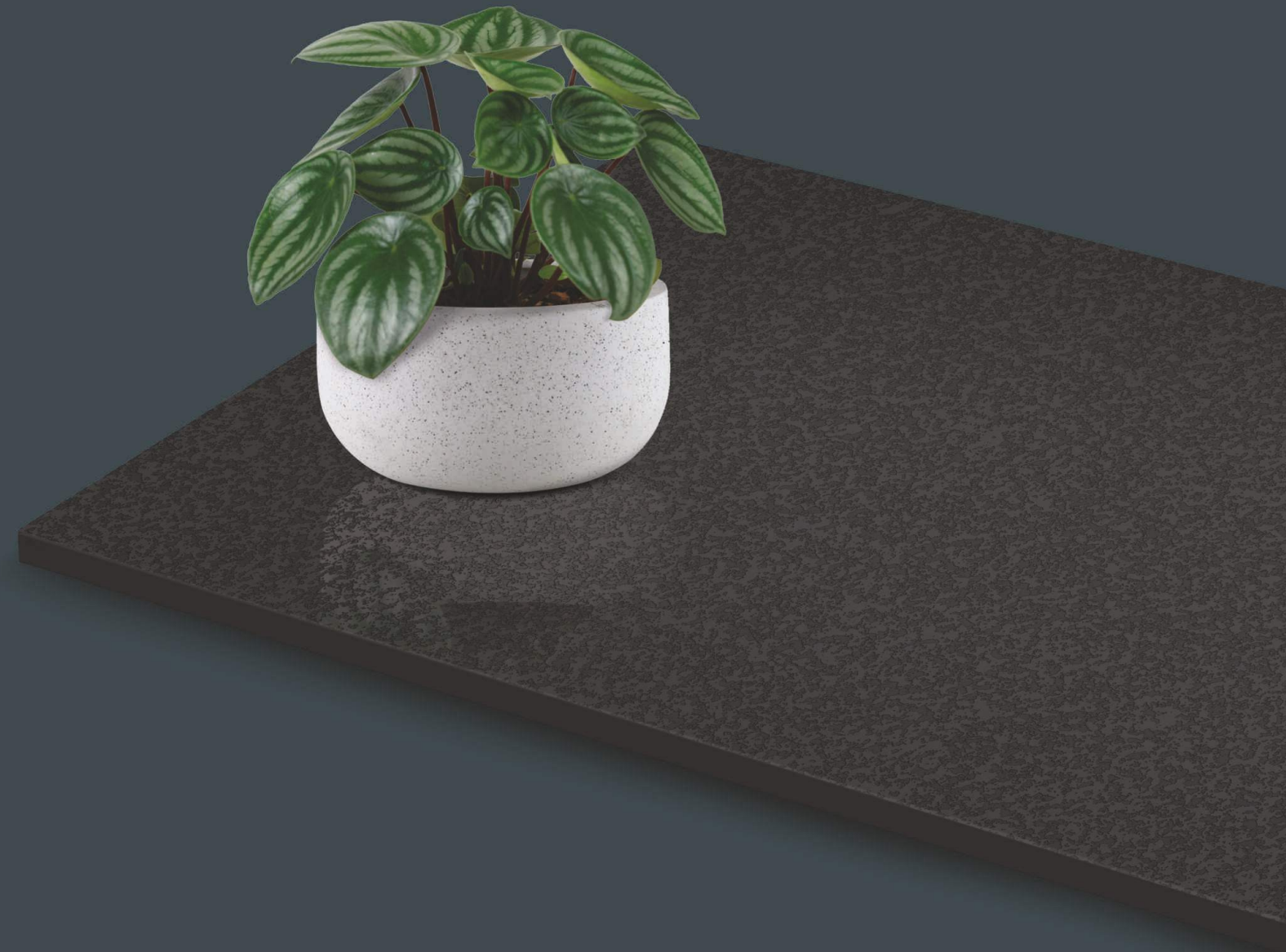
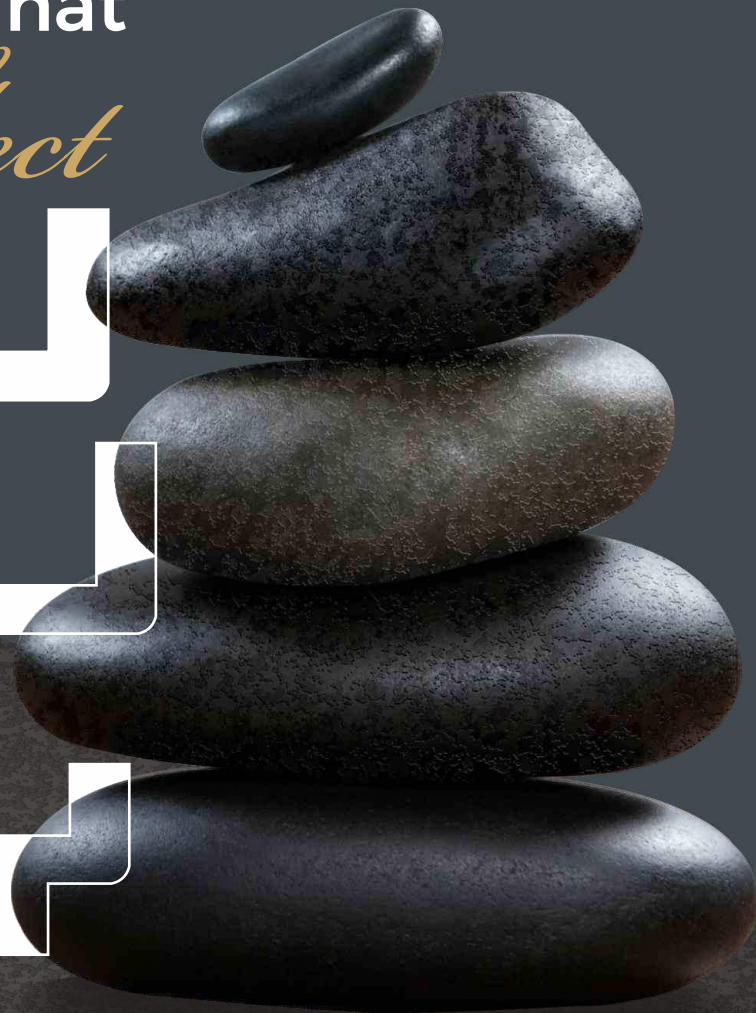
Surface That

Reflect

LU

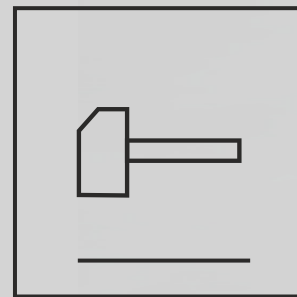
XL

R4



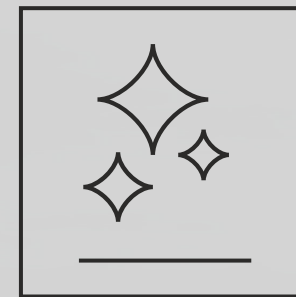
Solid, strong and uniform, it maintains its appearance even in the event of extreme wear and damage.





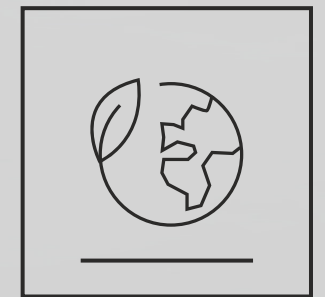
Solid

Solid, strong and uniform, it maintains its appearance even in the event of extreme wear and damage.



Safe, Clean, Fireproof

Sanitisable, resistant to acid, easy to clean, does not burn and does not release harmful substances



Highly Sustainable

Porcelain stoneware reduced with maximum respect for the environment and for workers. Long-lasting

Finish

Lappato
COLLECTION

Preview Shown :
COSMIC CREMA DIAMOND
& COSMIC CREMA

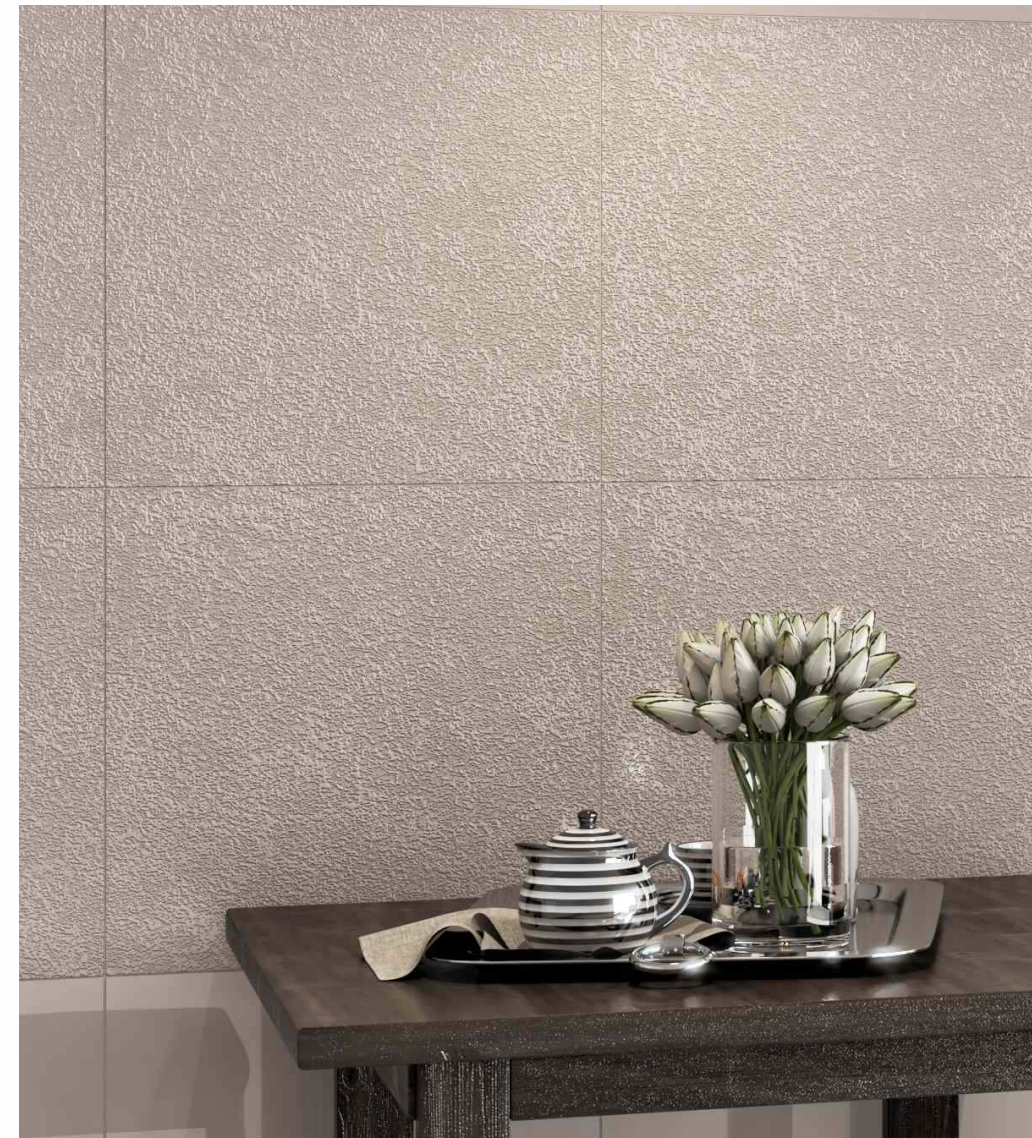
Size :
600 x 600 mm



Preview Shown :
COSMIC CREMA ROCK
& COSMIC CREMA

Size :
600 x 600 mm

Finish :
Lappato



Preview Shown :
COSMIC CREMA ROCK
& COSMIC CREMA

Size :
600 x 600 mm

Finish :
Lappato

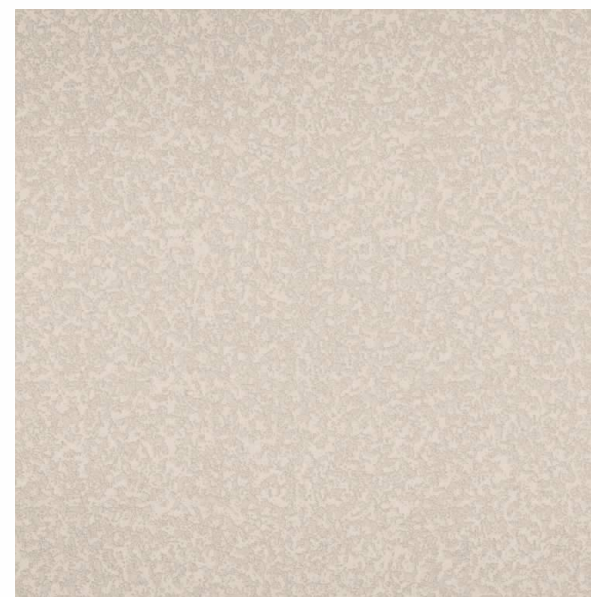


COSMIC CREMA

LIGHT
series

Finish
Lappato
COLLECTION

COSMIC CREMA
DIAMOND



600 x 600 mm | LAPPATO FINISH

COSMIC CREMA
ROCK



600 x 600 mm | LAPPATO FINISH

Finish

Lappato
COLLECTION

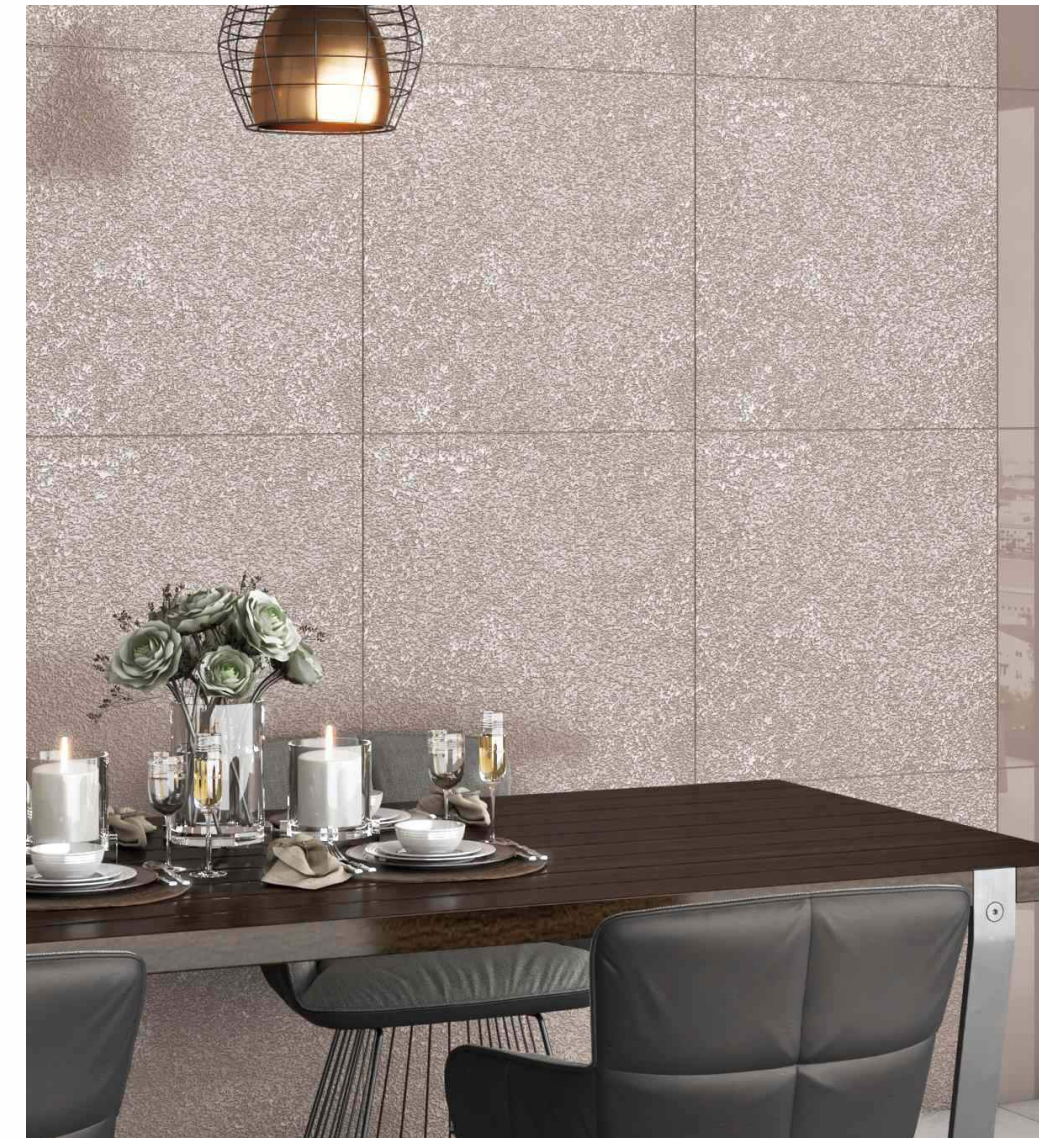
Preview Shown : SILK ROUTE DIAMOND & SILK ROUTE
Size : 600 x 600 mm



Preview Shown : SILK ROUTE ROCK & SILK ROUTE

Size : 600 x 600 mm

Finish : Lappato

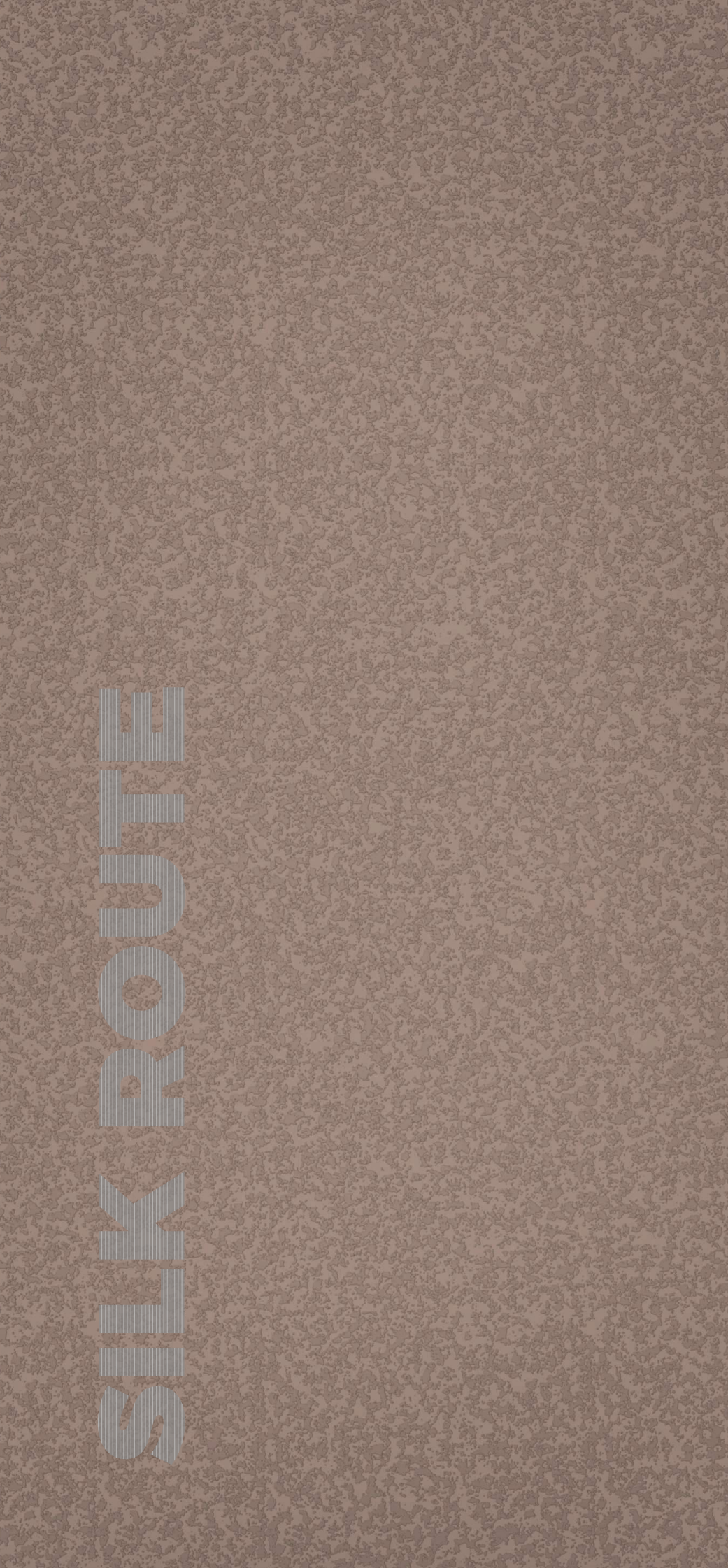


Preview Shown :
SILK ROUTE ROCK
& SILK ROUTE

Size :
600 x 600 mm

Finish :
Lappato

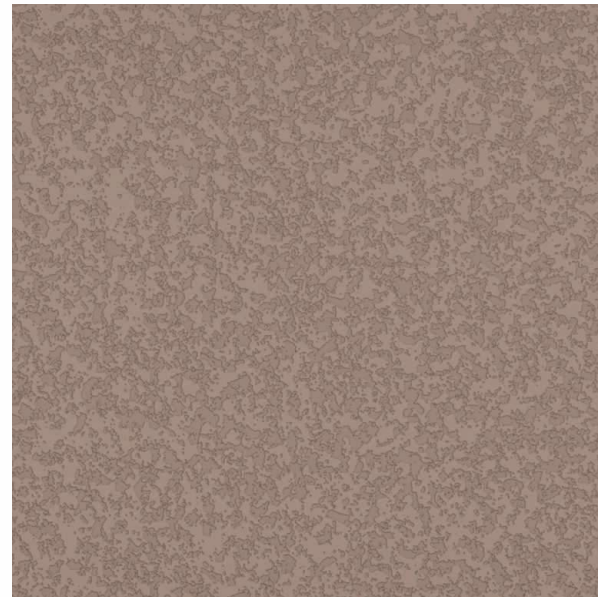




LIGHT
series

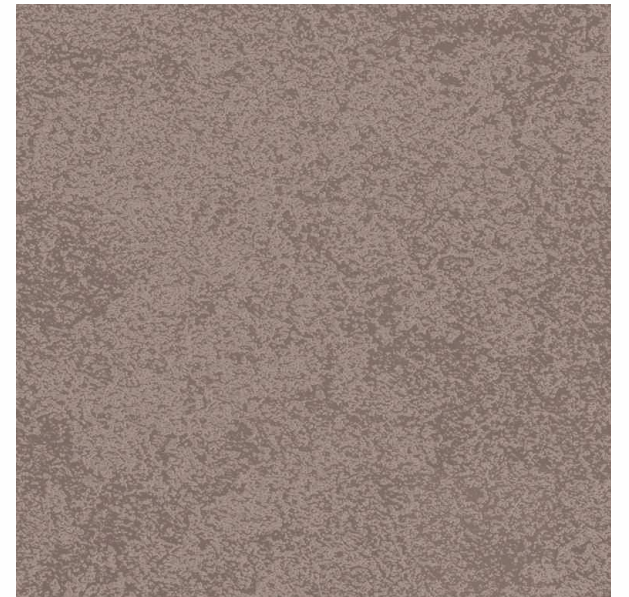
Finish
lappato
COLLECTION

SILK ROUTE
DIAMOND



600 x 600 mm | LAPPATO FINISH

SILK ROUTE
ROCK



600 x 600 mm | LAPPATO FINISH

Finish



Preview Shown : STEEL GREY Diamond & STEEL GREY
Size : 600 x 600 mm



Preview Shown : STEEL GREY ROCK & STEEL GREY

Size : 600 x 600 mm

Finish : Lappato



Preview Shown :
STEEL GREY ROCK
& STEEL GREY

Size :
600 x 600 mm

Finish :
Lappato

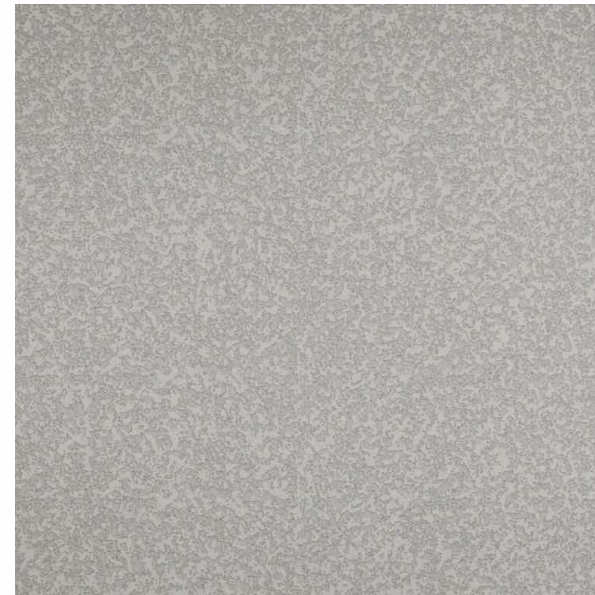


STEEL GREY

LIGHT
series

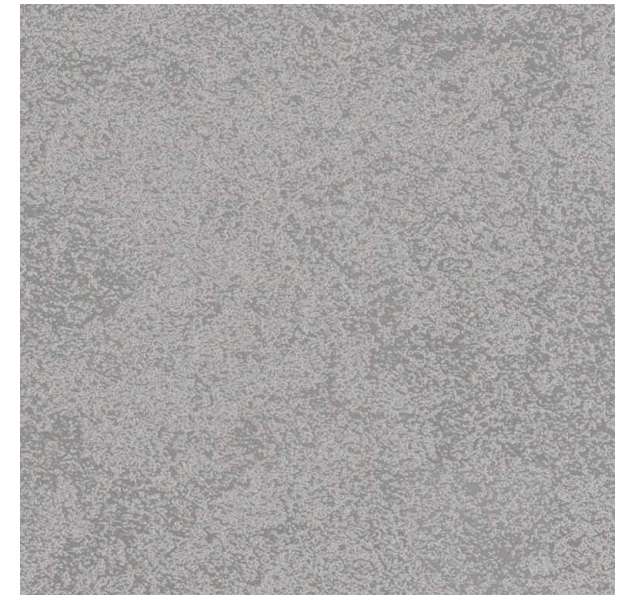
Finish
Lappato
COLLECTION

STEEL GREY
DIAMOND



600 x 600 mm | LAPPATO FINISH

STEEL GREY
ROCK



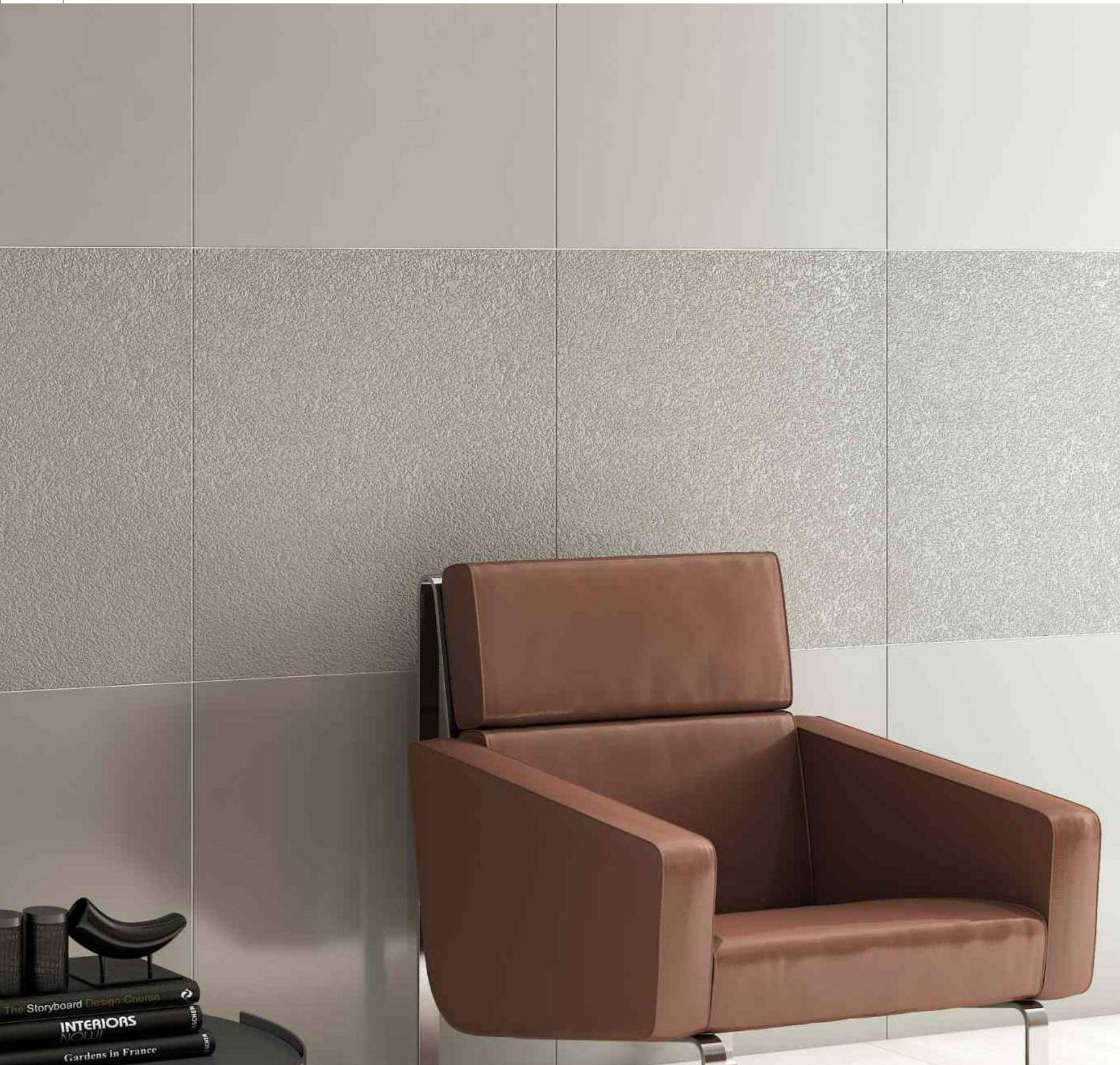
600 x 600 mm | LAPPATO FINISH

Finish



Preview Shown :
SLATE GREY DIAMOND
& SLATE GREY

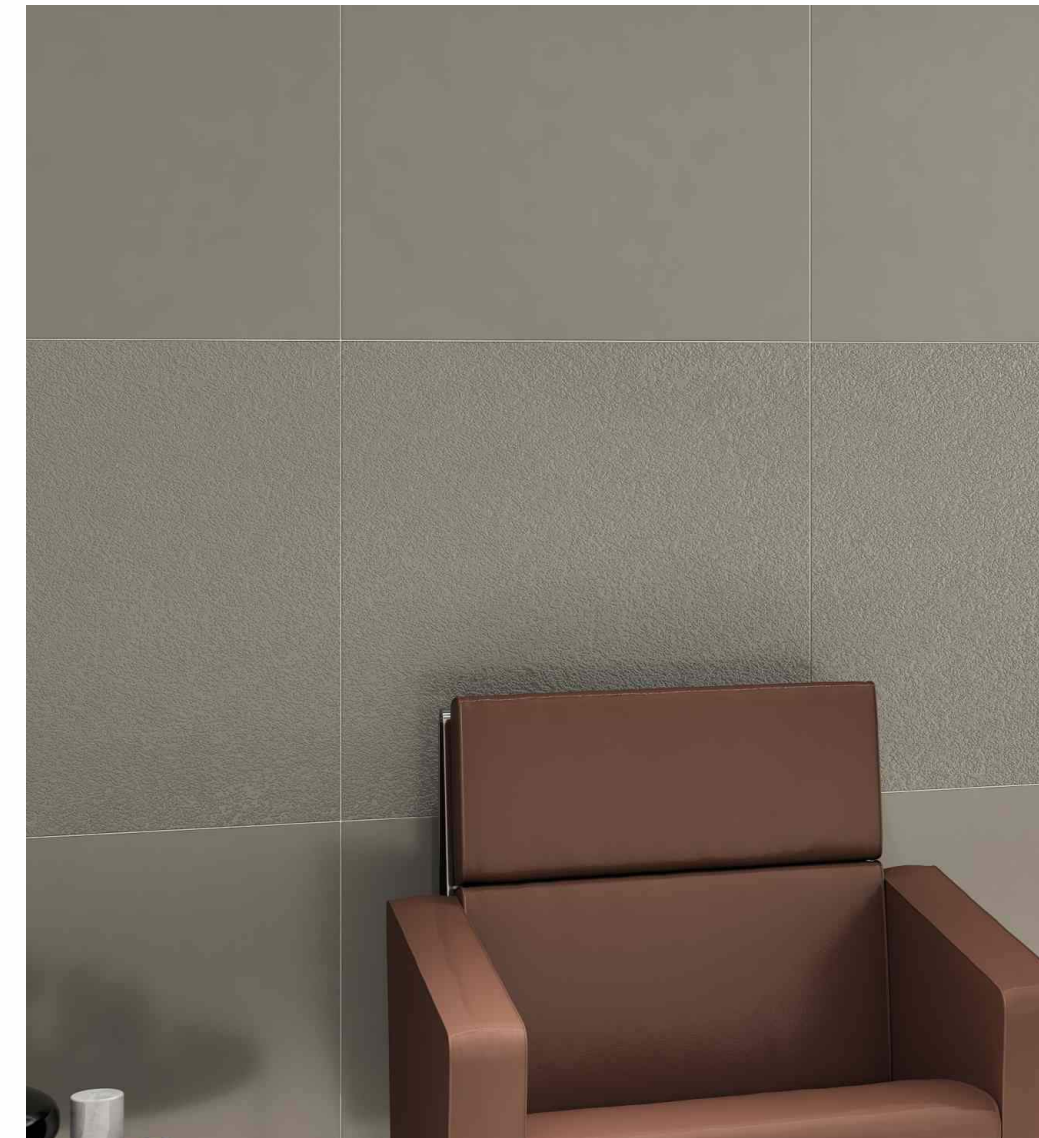
Size :
600 x 600 mm



Preview Shown :
SLATE GREY ROCK
& SLATE GREY

Size :
600 x 600 mm

Finish :
Lappato



Preview Shown :
SLATE GREY ROCK
&SLATE GREY

Size :
600 x 600 mm

Finish :
Lappato

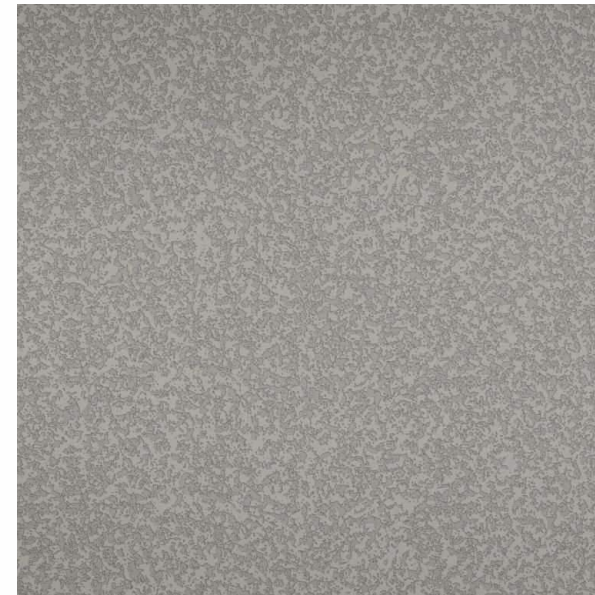


SLATE GREY

LIGHT
series

Finish
lappato
COLLECTION

SLATE GREY
DIAMOND



600 x 600 mm | LAPPATO FINISH

SLATE GREY
ROCK



600 x 600 mm | LAPPATO FINISH

Finish

Lappato
COLLECTION

Preview Shown :
AUTHENTIC WHITE DIAMOND
& AUTHENTIC WHITE

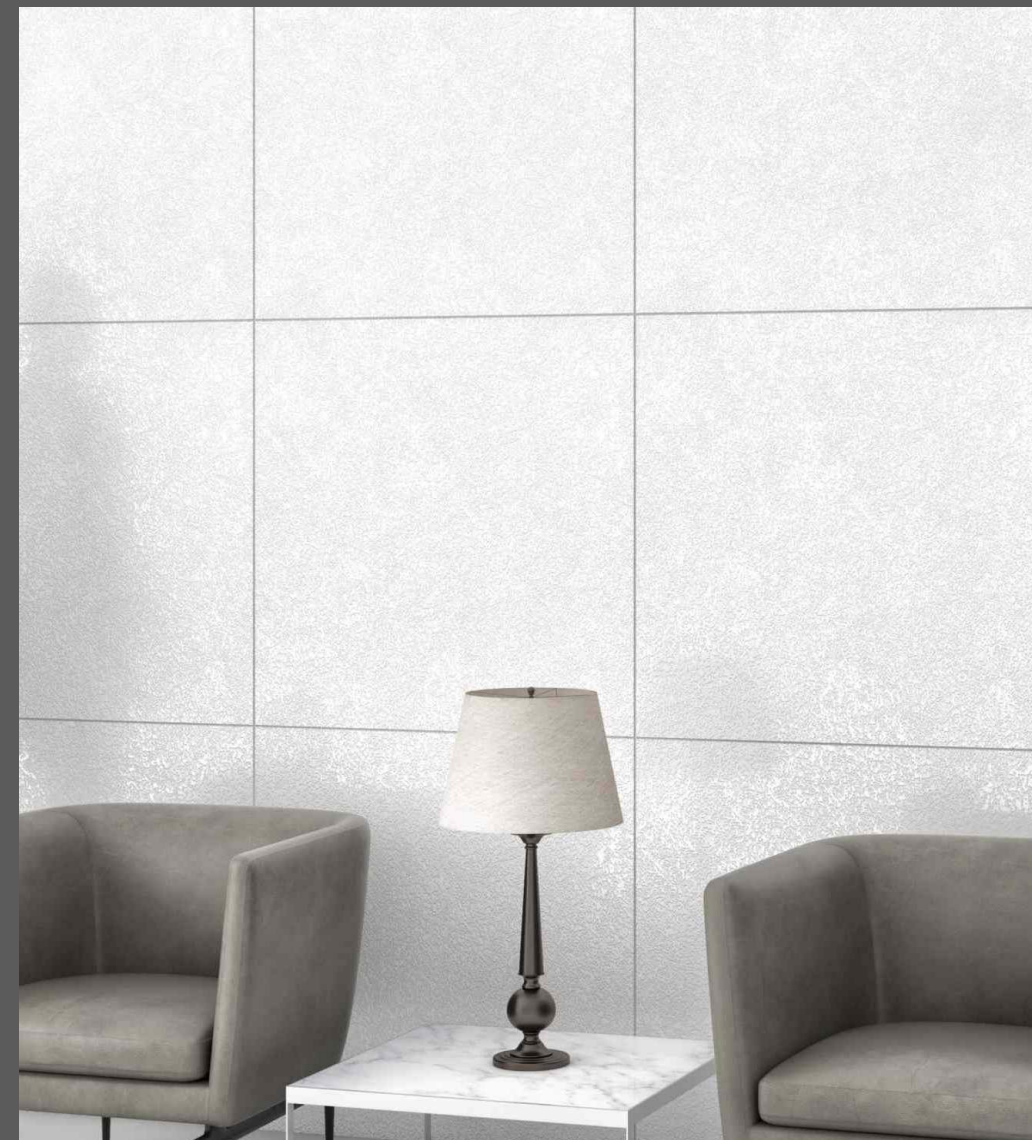
Size :
600 x 600 mm



Preview Shown :
AUTHENTIC WHITE ROCK
& AUTHENTIC WHITE

Size :
600 x 600 mm

Finish :
Lappato



Preview Shown :
AUTHENTIC WHITE ROCK
& AUTHENTIC WHITE

Size :
600 x 600 mm

Finish :
Lappato

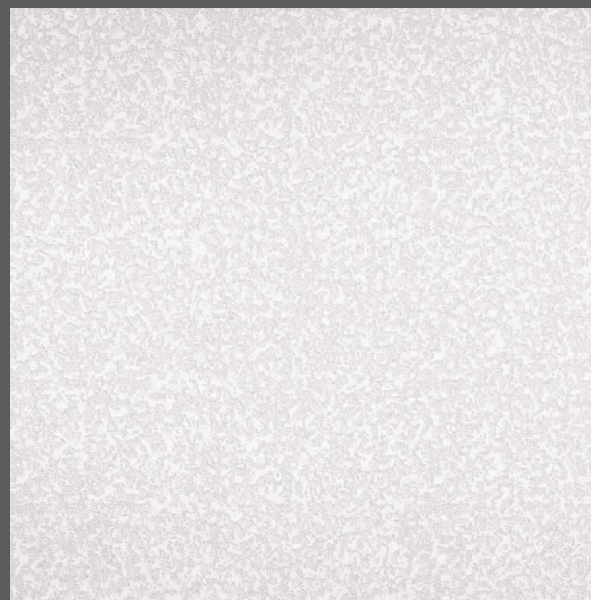


AUTHENTIC WHITE

SPECIAL
series

Finish
Lappato
Collection

AUTHENTIC WHITE
DIAMOND



600 x 600 mm | LAPPATO FINISH

AUTHENTIC WHITE
ROCK



600 x 600 mm | LAPPATO FINISH

Finish

Lappato
COLLECTION

Preview Shown : RICH BLACK ROCK | **Size :** 600 x 600 mm



Preview Shown : RICH BLACK DIAMOND & RICH BLACK

Size : 600 x 1200 mm

Finish : Lappato



Preview Shown :
RICH BLACK DIAMOND
& RICH BLACK

Size :
600 x 1200 mm

Finish :
Lappato



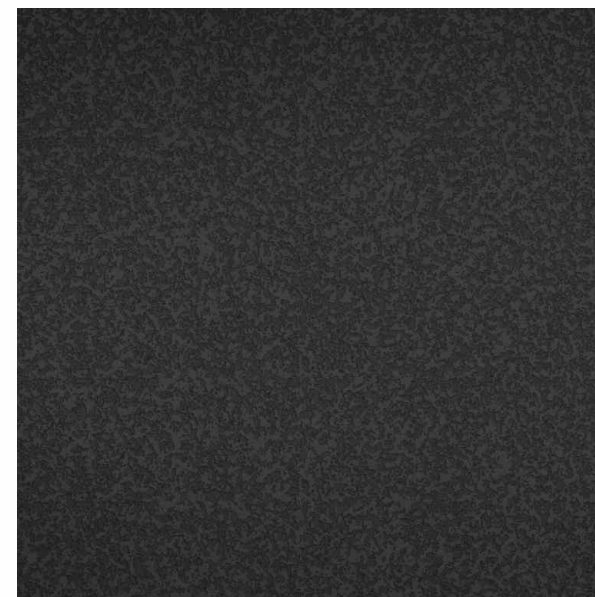
RICH BLACK

S SPECIAL
series

Finish
lappato
COLLECTION

RICH BLACK
DIAMOND

600 x 600 mm | LAPPATO FINISH



RICH BLACK
ROCK

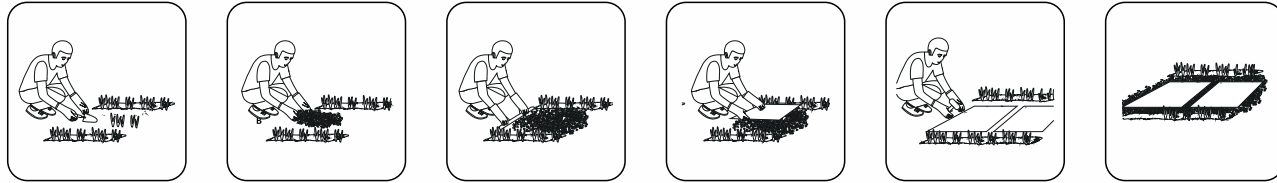
600 x 600 mm | LAPPATO FINISH



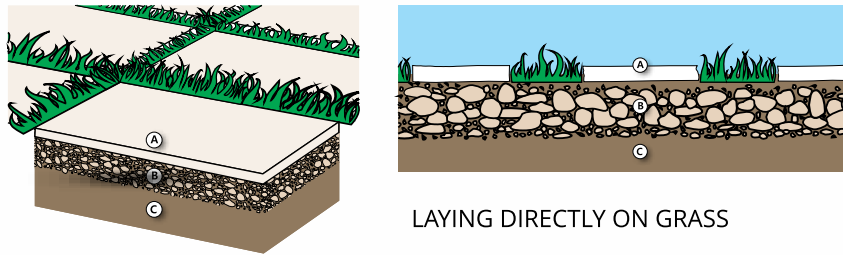
Direct Installation On Grass

Ideal for: Gardens, gazebos, walkways.

- 1- Remove the soil below the area where the sheet will be laid to a thickness of about 5-6 cm
- 2- apply gravel to a thickness of about 3-4 cm and compact the foundation
- 3- Rest the sheets - with at least 1 cm of gap - on the gravel bed and use a rubber hammer to eliminate any unevenness.

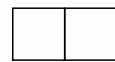


Installation On Gravel And Sand



LAYING DIRECTLY ON GRASS

Laying With Close Joints



Laying With Close Joints

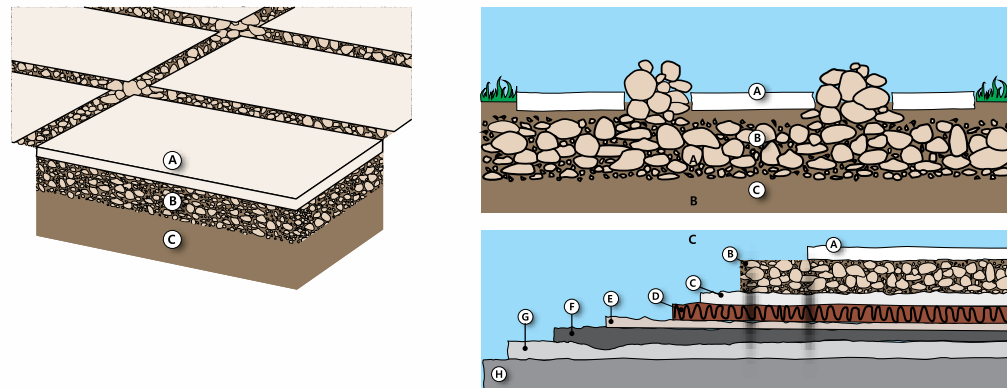


- A. Tile
- B. Fine gravel or sandy laying bed
- C. Ground

Installation On Gravel And Sand

Ideal for: gardens, patios, courtyards, pedestrian walkways, beach resorts, perimeter areas in pools.

- 1- Compact the level of the resting layer (sand or gravel)
- 2- Lay the sheet on the bed of gravel or sand, maintaining a minimum gap of 1 cm or wider
- 3- Use a rubber hammer to eliminate any unevenness
- 4- Fill in the joints between the sheets with gravel or sand to provide greater stability to the surface



- A. Tile
- B. Fine gravel or sandy laying bed
- C. Concrete screed (may include electro welded mesh)
- D. Reinforcement layer
- E. Concrete screed
- F. Loose stone foundation (gravel)
- G. Soil

TECHNICAL SPECIFICATION

| TECHNICAL DETAILS | STANDARD AS PER ISO-13006/EN176 GROUP BIa | MEAN VALUE OF OUR FULL BODY VITRIFIED TILES | METHOD OF TEST |
|---|---|---|----------------|
| Deviation In Length & Width | ±0.60% | ±0.10% | ISO-10545-2 |
| Deviation In Thickness | ±5.00% | ±2.00% | ISO-10545-2 |
| Straightness Of Sides | ±0.50% | ±0.10% | ISO-10545-2 |
| Rectangularity | ±0.60% | ±0.10% | ISO-10545-2 |
| Surface Flatness | ±0.50% | ±0.10% | ISO-10545-2 |
| Glossiness | Gloss Meter | Min. 90% | Glossmeter |
| Water Absorption | ≤0.50% | E≤0.05% | ISO-10545-3 |
| Breaking Strength | 1300 N | 2000 N | ISO-10545-4 |
| Abrasion Resistance | Max. 175mm ³ | Max. 145mm ³ | ISO-10545-6 |
| Moh's Hardness | Min. 6 | ≥ 6* | EN 101 |
| Frost Resistance | Frost Proof | Frost Proof | ISO-10545-12 |
| Thermal Shock | No Damage | No Damage | ISO-10545-9 |
| Moisture Expansion | Nil | Nil | ISO-10545-10 |
| Thermal Expansion | <9x10 ⁻⁶ | ≥ 6 x 10 ⁻⁶ | ISO-10545-8 |
| Resistance of House Hold Chemical | No Damage | No Damage | ISO-10545-13 |
| Stain Resistance | Resistance | Resistance | ISO-10545-14 |
| Slip Resistance (friction Co Efficient) | > 0.40 | > 0.40 | ISO-10545-17 |

DISCLAIMER :
Icon reserves the right to delete & amend either totally or partially, any of the colors, shapes, sizes, references and other technical specifications contained in this catalogue at anytime. The colors of tiles shown in this catalogue are purely illustrative and limited to printing process. Please refer actual sample before final selection. The details of sizes, colors and references should be verified for typographical errors.

PACKING DETAILS

| | SIZE | Pcs. / Box | Weight / Box (Approx.) | Coverage Area / Box | |
|------------------|--------------|------------|------------------------|---------------------|-------------------------|
| | | | Matt | | |
| FULL BODY | 600 x 600 mm | 4 pcs. | 28 Kg | 15.5 / Sq. Feet | 1.44 / Mtr ² |

THANK YOU