

**Raduno 2022 - Saturday Morning “The Long City Ride: Italian Embassy Party, Glen Echo Carousel, Rock Creek Park, Lunch at I’m Eddie Cano”**



**Date** > **Saturday 17 September 2022**

**Time** > **9:00** am for Meet & Greet / Kickstands up at **10:00 am SHARP - NOT “scooter time”** - you should be at the **pre-ride briefing at 9:45. We must arrive at the Italian Embassy by 10:30.**

**Route** > Distance is about **35** miles round trip. Speed will be **0-50 MPH**, mostly city boulevards with some traffic lights, varying from stop and go Georgetown traffic to George Washington Parkway speed.

**Description:**

Join us for some of DC’s best sights, a real Italian welcome at the embassy, an old-fashioned carousel ride, Rock Creek Park’s natural beauty, and more. Our ride will have

4 segments of about 30 minutes riding time each, with stops at the Italian Embassy, Glen Echo amusement park, and at I'm Eddie Cano restaurant for lunch.

We will scoot down Spout Run, then over the Key Bridge through Georgetown to the Italian Embassy for cappucinos and pastries.

**Note: you MUST provide your license plate number at registration on Friday night in order to be allowed on the Embassy property. Your full name and plate number will be provided to the Embassy to expedite security screening. If you do not wish to provide this info, you will not be allowed on to the Embassy property and will have to wait outside the gates during the stop, from 10:30-11:30am.**

Then we will ride up MacArthur Boulevard to the beautiful and historic Glen Echo Amusement Park. Most of us will shell out the \$2 to ride the carousel while we spend about 45 minutes there. Then we will ride through Rock Creek Park and end up for lunch at I'm Eddie Cano Italian restaurant on Connecticut Avenue. Depending on time and traffic, we may extend the ride through Rock Creek Park a bit. Finally, with full bellies we will ride down Foxhall Road to Canal Road and back over the Key Bridge to join the rest of the afternoon festivities at Mason Plaza.

**RIDE TEAM:**

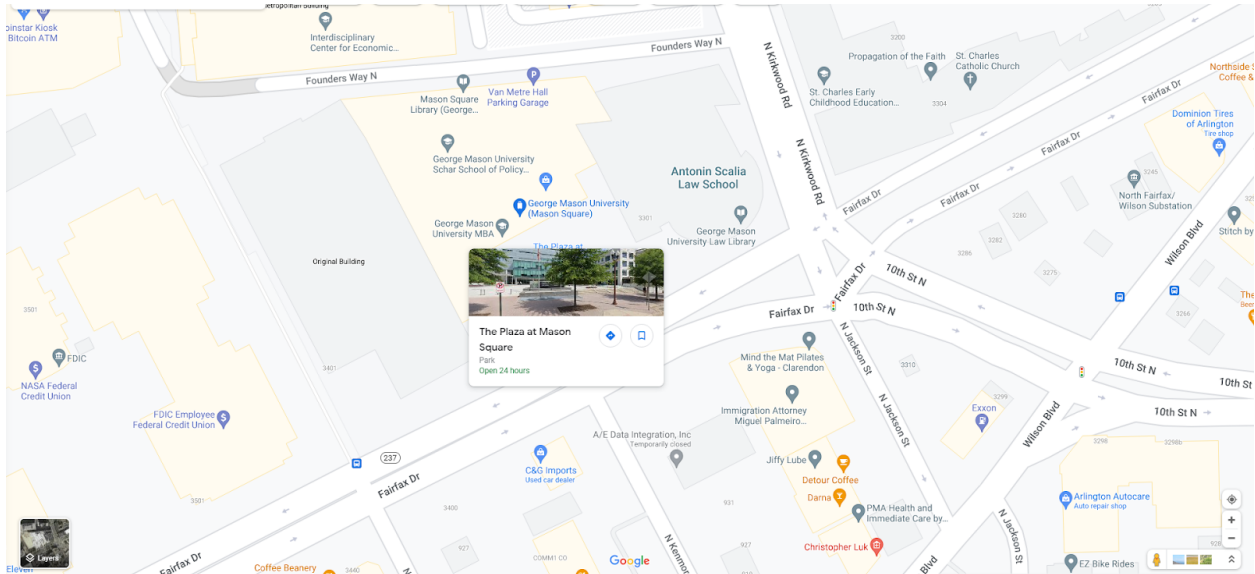
- Ride Leader: Bobo - special cell number for Raduno only 212-537-6426
- Sweep: Sunny Howe (ask her to share cell number)
- Blocker(s): Ed Howe (Other Vespa Committee members who are on the ride are not known in advance but will be asked to identify themselves.)

**Important:**

1. Bring water
2. Start with a full gas tank! But our ride distance is only 35 miles, and gas is across the street from our Glen Echo stop 15 miles into the ride.
3. All riders will be asked to show their wristbands at the start point, to show that they have signed the Vespa Committee liability waiver

**Start/End Location** > Mason Plaza, 3301 Fairfax Dr., Arlington VA 22201

📍 George Mason University (Mason Square)

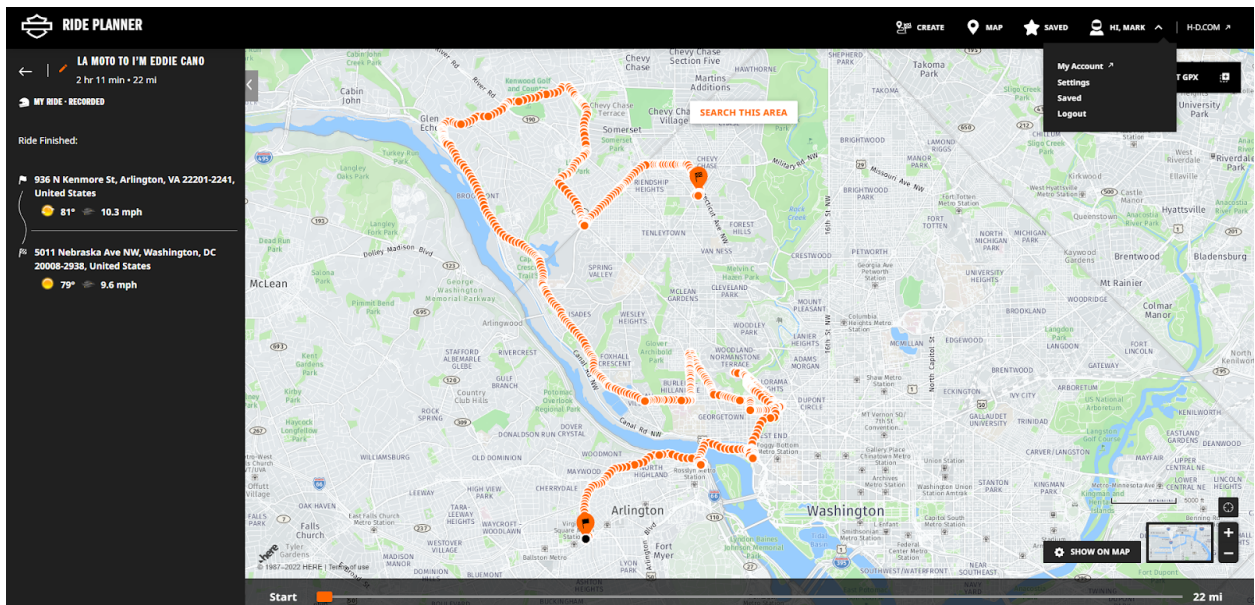


**The route:**

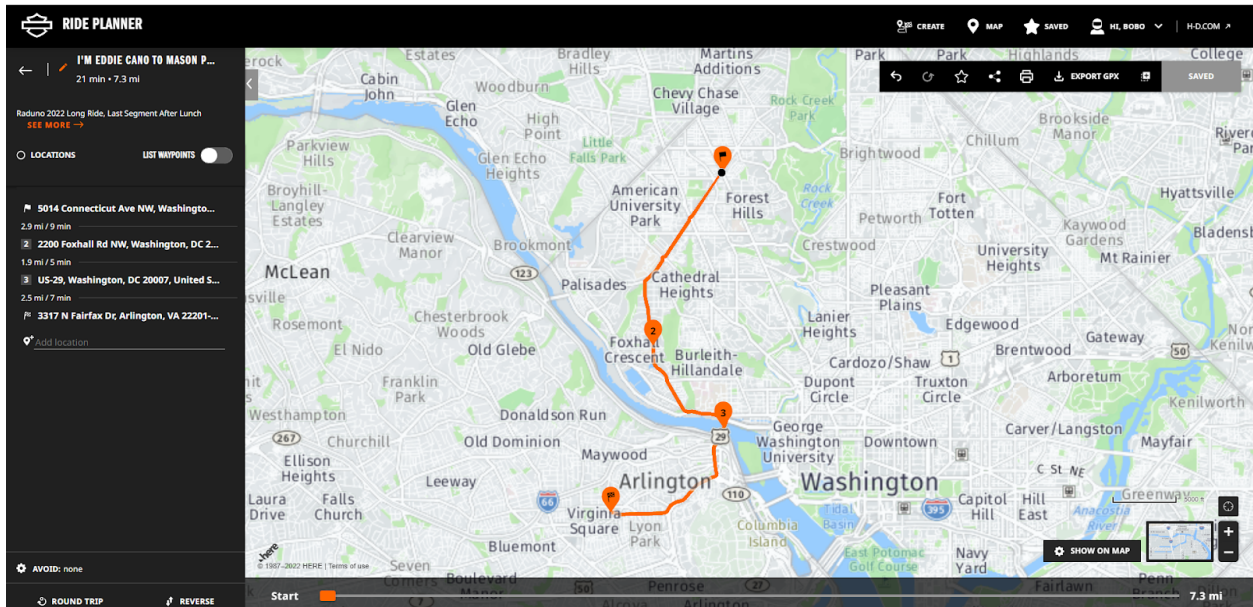
The first 3 segments of our ride are shown on the first map, and the final segment, after lunch, is on the second map.

First map: <https://maps.harley-davidson.com/share/rides/4T9gKL3eE>

Second Map: [https://maps.harley-davidson.com/share/rides/INK\\_4JeJE](https://maps.harley-davidson.com/share/rides/INK_4JeJE)







**Lunch/Food** > Lunch purchase is on your own. We will stop for lunch at “I’m Eddie Cano” (say that fast a couple of times and you’ll get it), a well-loved Italian place at 5014 Connecticut Ave. NW. There are several other places to eat on the same block if you’ve had enough Italian already for one Raduno.

**Fuel** > There are NO planned gas stops during the ride, so please arrive with a full tank if your tank is small. Our ride is about 35 miles total. There is a gas station across the street from the Glen Echo park stop, which is roughly 18 miles into our ride. The nearest gas station to the start point is the Exxon right across the street at 10th Street and Wilson Blvd. in Arlington.

**Safety** > We will practice safe group riding practices and will review them before the start of the ride. Reckless riding is not tolerated; you’ll be asked to leave the ride and the rally.

**Breakdowns** > In the event of a breakdown, we will pull over to make sure no-one is hurt / in trouble. If the issue creates a total stop for your scooter, please have a backup plan to call your insurance or tow company. The ride will have to continue on to the destination.

## Ride Agenda / Stops

Our ride will have 4 segments of about 30 minutes riding time each.

We will scoot down Spout Run, then over the Key Bridge through Georgetown to the Italian Embassy for cappuccinos and pastries and a welcome by the Ambassador. Then we will ride up MacArthur Boulevard to the beautiful and historic Glen Echo Amusement Park. Most of us will shell out the \$2 to ride the carousel while we spend about 45 minutes there. Then we will ride through Rock Creek Park and end up for lunch at I'm Eddie Cano Italian restaurant on Connecticut Avenue. Depending on time and traffic, we may extend the ride through Rock Creek Park a bit. Finally, with full bellies we will ride down Foxhall Road to Canal Road and back over the Key Bridge to join the rest of the festivities at Mason Plaza.

Bathrooms are available at each stop. A gas station is across the street from Glen Echo park, and another one is near the restaurant. There are other food options on the same block as our chosen restaurant.

Schedule:

10:00am SHARP: Depart Start-Point: Mason Plaza, 3100 N Fairfax Dr. in Arlington, VA

📍 George Mason University (Mason Square)

10:30am - 11:30am Embassy of Italy 📍 Embassy of Italy

12:00 - 12:45 Glen Echo Amusement Park & Carousel 📍 Glen Echo Park

1:30 - 2:30 I'm Eddie Cano Restaurant 📍 I'm Eddie Cano

3:00 pm Arrive at End-Point (Same as Start)

We look forward to seeing everyone there!

Vespa Committee of Washington, DC