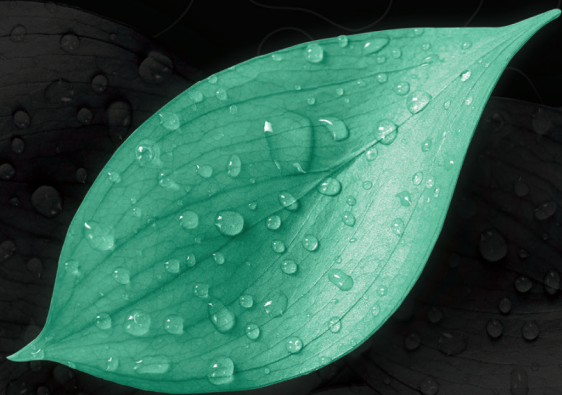


AGROVIVE™

SEED
COAT

ION_{fx} SEED
COAT™

MULTI CROP



8 56304 00800 4

Net Contents 2.5 GALLONS (9.46 Liters)



IONfx Seed Coat 0-0-1

Guaranteed Analysis

Soluble Potash (K_2O) 1.00%

Derived from: Potassium carbonate

NONPLANT FOOD INGREDIENTS: Contains 400 million total colony forming units per gallon (4.0x10⁹) total CFU/gallon) of the following bacteria:

Pseudomonas fluorescence 1.0 x 10⁵ CFU/ml

MIXING INSTRUCTIONS

1. Application equipment must be clean and free of previously used chemical residues before applying Seed Coat.
2. Shake well or agitate Seed Coat prior to use.
3. Mixing Seed Coat with tank - mix partners: add the required water and add Seed Coat and tank mix - partners to the mix tank. Start and maintain constant mechanical and by pass agitation throughout the entire mixing and treating process.
4. Accurate calibration of the application equipment and frequent checks of this calibration is recommended to insure proper seed coverage.

CONDITIONS OF SALE AND LIMITATION OF WARRANTY AND LIABILITY

Limitation of Liability: In no event shall seller or manufacturer be liable for special, incidental or consequential damages, or for damages in the nature of penalties. Seller or manufacturer shall not be liable to buyer, by way of indemnification to customer or buyer, if any, for any damages, sums of money, claims or demands whatsoever, resulting from or by reason of, or rising out of the misuse or the failure to follow label warnings or instructions for use of the goods sold by the seller or manufacturer to buyer. Buyer's or user's exclusive remedy and seller's or manufacturer's total liability shall be for damages not exceeding the cost of the product. **Warranty disclaimer:** Ineffectiveness or other unintended consequences may result because of such factors as presence of other materials or the

Directions for use:

SHAKE WELL, Store between 50°F and 97°F, Store in Dark Place Apply at a rate of 4 ounces (118.3 ml) per 100 lbs. (45.4 KG) of seed.

STATEMENT OF PRACTICAL TREATMENT

IF IN EYES: Immediately flush eyes with plenty of water for at least 15 minutes. Get medical attention if irritation occurs.

IF ON SKIN: Wash with plenty of soap and water.

Get medical attention if irritation occurs.

IF INGESTED: Induce Vomiting. Contact a physician or poison control center immediately. Offer small amounts of water or milk.

Purpose of ingredients: Improves soil structure.

Approved Crops: Corn, Sorghum, Canola (Rapeseed), Cotton, Flax, Hemp

Microorganisms exempt from CFR requirements: 40 CFR 725.

Handling Instructions: Store in a cool, dark place to maximize shelf life.

5. Uniform coating of the seed is necessary to insure proper efficacy.
6. Depending on the type of seed treating equipment a small amount of water can be added to the product to facilitate product flow through the spray nozzles. Do not exceed five (5) fluid ounces of water per one gallon of IONFX.
7. Environmental conditions such as temperature and humidity could have an effect on handling and during the drying of seed just after treatment.

manner of use or application, all of which are beyond the control of the seller or manufacturer. In no case shall seller or manufacturer be liable for consequential, special or indirect damages resulting from the use or handling of this product. The buyer or its customers shall assume all such risks. Tests have not been carried out under all possible conditions and seller or manufacturer cannot and does not warrant that the product is compatible with all other chemicals. Seller or manufacturer warrants that product is adequately contained, packaged and labeled and conforms to the affirmation of fact made on the container and label. Seller or manufacturer makes no other warranties, guarantees, or representations of any kind, either expressed or implied, or by usage of

**Must Be Used Within 72 Hours of Breaking
Foil Seal Due To Potential Contamination,
otherwise the product is to be disposed of.**

Unopened Bottle Expires 12 Months From:

Precautions

IMPORTANT NOTE: TEST PRODUCT AND TANK MIX ON SMALL TEST AREA OF CROP TO DETERMINE POSSIBLE PHYTOTOXICITY BEFORE APPLYING TO WHOLE OF FIELD OR CROP.

**Never mix spray concentrates
directly together. Do "jar test"
before mixing with other materials**

Caution: Do not use with antimicrobial water conditioners, or water containing levels not approved under EPA human drinking water standards. This includes but is not limited to Copper, Bleach, Fluoride, Chloramines, Chloride, Bacteriocides, Propiconazole (Slant™, Tilt™), Phosphoric Acid, Sulfuric acid.

trade, statutory or otherwise, with regard to the product sold, including, but not limited to merchantability, fitness for a particular purpose, use or eligibility of the product for any particular trade usage. Company and seller offer this product, and Buyer and User accept it, subject to the foregoing conditions of sale and limitations of warranty and of liability, which may not be modified except by written agreement signed by a duly authorized representative of Agrovive.

AGROVIVE™

315 North Heritage Parkway, Tea, SD 57064
agrovive.com | 1.888.638.2861

For proper agronomic application rates suitable for your geographical area or the maximum allowable non-nutrient application rate per acre, consult a trained soil specialist at Agrovive™ or call or write to Agrovive™ with the address provided.



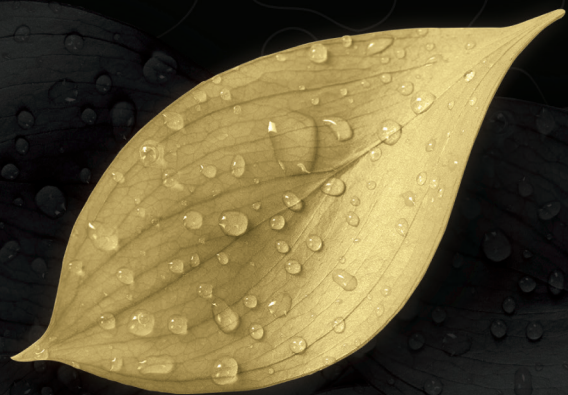
2.5 U.S. GAL (9.46L) ...Net Weight 25.03 LBS. (11.35KGS)
275 U.S. GAL (1040L) ...Net Weight 2752.75 LBS. (1248.6 KGS)

AGROVIVE™

SEED
COAT

Crown *fx* SEED
COAT™

SMALL GRAIN



8 56304 00804 9

Net Contents 2.5 GALLONS (9.46 Liters)



Crownfx Seed Coat 0-0-1

Guaranteed Analysis

Soluble Potash (K_2O) 1.00%

Derived from: Potassium carbonate

NONPLANT FOOD INGREDIENTS: Contains 1 million total colony forming units per gallon (1.0x10⁷) total CFU/gallon) of the following bacteria:

Bacillus megaterium 1.0 x 10⁵ CFU/ml
Bacillus licheniformis 1.0 x 10² CFU/ml

MIXING INSTRUCTIONS

1. Application equipment must be clean and free of previously used chemical residues before applying Seed Coat.
2. Shake well or agitate Seed Coat prior to use.
3. Mixing Seed Coat with tank - mix partners: add the required water and add Seed Coat and tank mix - partners to the mix tank. Start and maintain constant mechanical and by pass agitation throughout the entire mixing and treating process.
4. Accurate calibration of the application equipment and frequent checks of this calibration is recommended to insure proper seed coverage.

CONDITIONS OF SALE AND LIMITATION OF WARRANTY AND LIABILITY

Limitation of Liability: In no event shall seller or manufacturer be liable for special, incidental or consequential damages, or for damages in the nature of penalties. Seller or manufacturer shall not be liable to buyer, by way of indemnification to customer or buyer, if any, for any damages, sums of money, claims or demands whatsoever, resulting from or by reason of, or rising out of the misuse or the failure to follow label warnings or instructions for use of the goods sold by the seller or manufacturer to buyer. Buyer's or user's exclusive remedy and seller's or manufacturer's total liability shall be for damages not exceeding the cost of the product. **Warranty disclaimer:** Ineffectiveness or other unintended consequences may result because of such factors as presence of other materials or the

Directions for use:

SHAKE WELL, Store between 50°F and 97°F, Store in Dark Place Apply at a rate of 4 ounces (118.3 ml) per 100 lbs. (45.4 KG) of seed.

STATEMENT OF PRACTICAL TREATMENT

IF IN EYES: Immediately flush eyes with plenty of water for at least 15 minutes. Get medical attention if irritation occurs.

IF ON SKIN: Wash with plenty of soap and water.

Get medical attention if irritation occurs.

IF INGESTED: Induce Vomiting. Contact a physician or poison control center immediately. Offer small amounts of water or milk.

Purpose of ingredients: Improves soil structure.

Approved Crops: Small Grains (Wheat, Barley, Oats, Rye, Rice, Millet, Quinoa, Buck Wheat, Amaranth Grain, Chia, Teff, Triticale, Spelt, Fonio, Coix Lacrymajobi, Bulgur)

Microorganisms exempt from CFR requirements: 40 CFR 725.

Handling Instructions: Store in a cool, dark place to maximize shelf life.

5. Uniform coating of the seed is necessary to insure proper efficacy.
6. Depending on the type of seed treating equipment a small amount of water can be added to the product to facilitate product flow through the spray nozzles. Do not exceed five (5) fluid ounces of water per one gallon of CrownFX.
7. Environmental conditions such as temperature and humidity could have an effect on handling and during the drying of seed just after treatment.

manner of use or application, all of which are beyond the control of the seller or manufacturer. In no case shall seller or manufacturer be liable for consequential, special or indirect damages resulting from the use or handling of this product. The buyer or its customers shall assume all such risks. Tests have not been carried out under all possible conditions and seller or manufacturer cannot and does not warrant that the product is compatible with all other chemicals. Seller or manufacturer warrants that product is adequately contained, packaged and labeled and conforms to the affirmation of fact made on the container and label. Seller or manufacturer makes no other warranties, guarantees, or representations of any kind, either expressed or implied, or by usage of

**Must Be Used Within 72 Hours of Breaking
Foil Seal Due To Potential Contamination,
otherwise the product is to be disposed of.**

Unopened Bottle Expires 12 Months From:

Precautions

IMPORTANT NOTE: TEST PRODUCT AND TANK MIX ON SMALL TEST AREA OF CROP TO DETERMINE POSSIBLE PHYTOTOXICITY BEFORE APPLYING TO WHOLE OF FIELD OR CROP.

**Never mix spray concentrates
directly together. Do "jar test"
before mixing with other materials**

Caution: Do not use with antimicrobial water conditioners, or water containing levels not approved under EPA human drinking water standards. This includes but is not limited to Copper, Bleach, Fluoride, Chloramines, Chloride, Bacteriocides, Propiconazole (Slant™, Tilt™), Phosphoric Acid, Sulfuric acid.

trade, statutory or otherwise, with regard to the product sold, including, but not limited to merchantability, fitness for a particular purpose, use or eligibility of the product for any particular trade usage. Company and seller offer this product, and Buyer and User accept it, subject to the foregoing conditions of sale and limitations of warranty and of liability, which may not be modified except by written agreement signed by a duly authorized representative of Agrovive.

AGROVIVE™

315 North Heritage Parkway, Tea, SD 57064
agrovive.com | 1.888.638.2861

For proper agronomic application rates suitable for your geographical area or the maximum allowable non-nutrient application rate per acre, consult a trained soil specialist at Agrovive™ or call or write to Agrovive™ with the address provided.



2.5 U.S. GAL (9.46L) Net Weight 25.03 LBS. (11.35KGS)
275 U.S. GAL (1040L) Net Weight 2752.75 LBS. (1248.6 KGS)

AGROVIVE™

SEED
COAT

Soyfx<sup>SEED
COAT™</sup>

SOYBEANS



8 56304 00804 5

Net Contents 2.5 GALLONS (9.46 Liters)



Soyfx Seed Coat 0-0-1

Guaranteed Analysis

Soluble Potash (K_2O) 1.00%

Derived from: Potassium carbonate

NONPLANT FOOD INGREDIENTS: Contains 1 million total colony forming units per gallon (1.0×10^7) total CFU/gallon) of the following bacteria:

Bacillus megaterium 1.0×10^5 CFU/ml
Bacillus Pumilus 1.0×10^2 CFU/ml

MIXING INSTRUCTIONS

1. Application equipment must be clean and free of previously used chemical residues before applying Seed Coat.
2. Shake well or agitate Seed Coat prior to use.
3. Mixing Seed Coat with tank - mix partners: add the required water and add Seed Coat and tank mix - partners to the mix tank. Start and maintain constant mechanical and by pass agitation throughout the entire mixing and treating process.
4. Accurate calibration of the application equipment and frequent checks of this calibration is recommended to insure proper seed coverage.

CONDITIONS OF SALE AND LIMITATION OF WARRANTY AND LIABILITY

Limitation of Liability: In no event shall seller or manufacturer be liable for special, incidental or consequential damages, or for damages in the nature of penalties. Seller or manufacturer shall not be liable to buyer, by way of indemnification to customer or buyer, if any, for any damages, sums of money, claims or demands whatsoever, resulting from or by reason of, or rising out of the misuse or the failure to follow label warnings or instructions for use of the goods sold by the seller or manufacturer to buyer. Buyer's or user's exclusive remedy and seller's or manufacturer's total liability shall be for damages not exceeding the cost of the product. **Warranty disclaimer:** Ineffectiveness or other unintended consequences may result because of such factors as presence of other materials or the

Directions for use:

SHAKE WELL, Store between 50°F and 97°F, Store in Dark Place Apply at a rate of 4 ounces (118.3 ml) per 100 lbs. (45.4 KG) of seed.

STATEMENT OF PRACTICAL TREATMENT

IF IN EYES: Immediately flush eyes with plenty of water for at least 15 minutes. Get medical attention if irritation occurs.

IF ON SKIN: Wash with plenty of soap and water.

Get medical attention if irritation occurs.

IF INGESTED: Induce Vomiting. Contact a physician or poison control center immediately. Offer small amounts of water or milk.

Purpose of ingredients: Improves soil structure.

Approved Crops: Soybean

Microorganisms exempt from CFR requirements: 40 CFR 725.

Handling Instructions: Store in a cool, dark place to maximize shelf life.

5. Uniform coating of the seed is necessary to insure proper efficacy.
6. Depending on the type of seed treating equipment a small amount of water can be added to the product to facilitate product flow through the spray nozzles. Do not exceed five (5) fluid ounces of water per one gallon of SoyFX.
7. Environmental conditions such as temperature and humidity could have an effect on handling and during the drying of seed just after treatment.

manner of use or application, all of which are beyond the control of the seller or manufacturer. In no case shall seller or manufacturer be liable for consequential, special or indirect damages resulting from the use or handling of this product. The buyer or its customers shall assume all such risks. Tests have not been carried out under all possible conditions and seller or manufacturer cannot and does not warrant that the product is compatible with all other chemicals. Seller or manufacturer warrants that product is adequately contained, packaged and labeled and conforms to the affirmation of fact made on the container and label. Seller or manufacturer makes no other warranties, guarantees, or representations of any kind, either expressed or implied, or by usage of

**Must Be Used Within 72 Hours of Breaking
Foil Seal Due To Potential Contamination,
otherwise the product is to be disposed of.**

Unopened Bottle Expires 12 Months From:

Precautions

IMPORTANT NOTE: TEST PRODUCT AND TANK MIX ON SMALL TEST AREA OF CROP TO DETERMINE POSSIBLE PHYTOTOXICITY BEFORE APPLYING TO WHOLE OF FIELD OR CROP.

**Never mix spray concentrates
directly together. Do "jar test"
before mixing with other materials**

Caution: Do not use with antimicrobial water conditioners, or water containing levels not approved under EPA human drinking water standards. This includes but is not limited to Copper, Bleach, Fluoride, Chloramines, Chloride, Bacteriocides, Propiconazole (Slant™, Tilt™), Phosphoric Acid, Sulfuric acid.

trade, statutory or otherwise, with regard to the product sold, including, but not limited to merchantability, fitness for a particular purpose, use or eligibility of the product for any particular trade usage. Company and seller offer this product, and Buyer and User accept it, subject to the foregoing conditions of sale and limitations of warranty and of liability, which may not be modified except by written agreement signed by a duly authorized representative of Agrovive.

AGROVIVE™

315 North Heritage Parkway, Tea, SD 57064
agrovive.com | 1.888.638.2861

For proper agronomic application rates suitable for your geographical area or the maximum allowable non-nutrient application rate per acre, consult a trained soil specialist at Agrovive™ or call or write to Agrovive™ with the address provided.



2.5 U.S. GAL (9.46L) ...Net Weight 25.03 LBS. (11.35KGS)
275 U.S. GAL (1040L) ...Net Weight 2752.75 LBS. (1248.6 KGS)