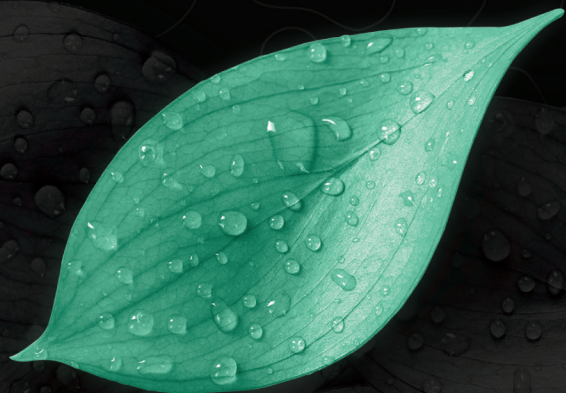


AGROVIVE™

IONTM*fx*

MULTI CROP



Net Contents 2.5 GALLONS (9.46 Liters)



8 56304 00800 1



IONfx 0-0-1

Guaranteed Analysis

Soluble Potash (K_2O) 1.00%

Derived from: Potassium carbonate

NONPLANT FOOD INGREDIENTS: Contains 400 million total colony forming units per gallon (4.0x10⁸) total CFU/gallon) of the following bacteria:

Pseudomonas fluorescence 1.0 x 10⁵ CFU/ml

Purpose of ingredients: Improves soil structure.

Approved Crops: Corn, Sorghum, Canola (Rapeseed), Cotton, Flax, Hemp, Triticale, Rye, Wheat

Microorganisms exempt from CFR requirements: 40 CFR 725.

Handling Instructions: Store in a cool, dark place to maximize shelf life.

Precautions

IMPORTANT NOTE: TEST PRODUCT AND TANK MIX ON SMALL TEST AREA OF CROP TO DETERMINE POSSIBLE PHYTOTOXICITY BEFORE APPLYING TO WHOLE OF FIELD OR CROP.

Never mix spray concentrates directly together. Do "jar test" before mixing with other materials

IMPORTANT NOTE: TEST PRODUCT AND TANK MIX ON SMALL TEST AREA OF CROP TO DETERMINE POSSIBLE PHYTOTOXICITY BEFORE APPLYING TO WHOLE OF FIELD OR CROP

MIXING INSTRUCTIONS:

1. Product may settle, shake container well before mixing.
2. Put 2/3 of water in tank.
3. Add correct amount of Product
4. Add other chemicals or fertilizers, if any.
5. Fill tank with balance of water, agitate until thoroughly mixed.
6. Agitation may be required to maintain uniform mixing.

Caution: Do not use with antimicrobial water conditioners, or water containing levels not approved under EPA human drinking water standards. This includes but is not limited to Copper, Bleach, Fluoride, Chloramines, Chloride, Bactericides, Propiconazole (Slant™, Tilt™), Phosphoric Acid, Sulfuric acid.

CONDITIONS OF SALE AND LIMITATION OF WARRANTY AND LIABILITY

Limitation of Liability: In no event shall seller or manufacturer be liable for special, incidental or consequential damages, or for damages in the nature of penalties. Seller or manufacturer shall not be liable to buyer, by way of indemnification to customer or buyer, if any, for any damages, sums of money, claims or demands whatsoever, resulting from or by reason of, or rising out of the misuse or the failure to follow label warnings or instructions for use of the goods sold by the seller or manufacturer to buyer. Buyer's or user's exclusive remedy and seller's or manufacturer's total liability shall be for damages not exceeding the cost of the product. **Warranty disclaimer:** Ineffectiveness or other unintended consequences may result because of such factors as presence of other materials or the

manner of use or application, all of which are beyond the control of the seller or manufacturer. In no case shall seller or manufacturer be liable for consequential, special or indirect damages resulting from the use or handling of this product. The buyer or its customers shall assume all such risks. Tests have not been carried out under all possible conditions and seller or manufacturer cannot and does not warrant that the product is compatible with all other chemicals. Seller or manufacturer warrants that product is adequately contained, packaged and labeled and conforms to the affirmation of fact made on the container and label. Seller or manufacturer makes no other warranties, guarantees, or representations of any kind, either expressed or implied, or by usage of

trade, statutory or otherwise, with regard to the product sold, including, but not limited to merchantability, fitness for a particular purpose, use or eligibility of the product for any particular trade usage. Company and seller offer this product, and Buyer and User accept it, subject to the foregoing conditions of sale and limitations of warranty and of liability, which may not be modified except by written agreement signed by a duly authorized representative of Agrovive.

Directions for use:

SHAKE WELL, Store between 50°F and 97°F,
Store in Dark Place

Apply at rate of one (1) quart (946 ml) per acre.

Mix one (1) quart (946 ml) with approximately
10 Gallons of water for foliar application.

**Must Be Used Within 72 Hours of Breaking
Foil Seal Due To Potential Contamination,
otherwise the product is to be disposed of.**

Unopened Bottle Expires 12 Months From:

AGROVIVE™

315 North Heritage Parkway, Tea, SD 57064
agrovive.com | 1.888.638.2861

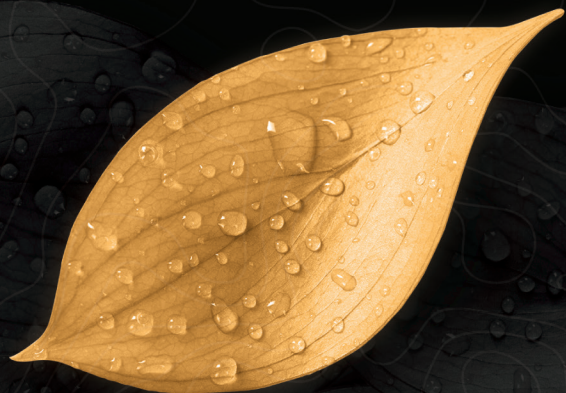
For proper agronomic application rates suitable for your geographical area or the maximum allowable non-nutrient application rate per acre, consult a trained soil specialist at Agrovive™ or call or write to Agrovive™ with the address provided.

2.5 U.S. GAL (9.46L).....Net Weight 25.03 LBS. (11.35KGS)
275 U.S. GAL (1040L).....Net Weight 2752.75LBS. (1248.6 KGS)

AGROVIVE™

hydra^{val}™

SUNFLOWER



Net Contents 2.5 GALLONS (9.46 Liters)



8 56304 00800 2



Hydraval 0-0-1

Guaranteed Analysis

Soluble Potash (K_2O) 1.00%

Derived from: Potassium carbonate

NONPLANT FOOD INGREDIENTS: Contains 400 million total colony forming units per gallon (4.0×10^8) total CFU/gallon) of the following bacteria:

Pseudomonas fluorescence 1.0×10^5 CFU/ml

Bacillus subtilis 1.0×10^2 CFU/ml

Purpose of ingredients: Improves soil structure.

Approved Crops: Sunflower, Safflower

Microorganisms exempt from CFR requirements: 40 CFR 725.

Handling Instructions: Store in a cool, dark place to maximize shelf life.

Precautions

IMPORTANT NOTE: TEST PRODUCT AND TANK MIX ON SMALL TEST AREA OF CROP TO DETERMINE POSSIBLE PHYTOTOXICITY BEFORE APPLYING TO WHOLE OF FIELD OR CROP.

Never mix spray concentrates directly together. Do "jar test" before mixing with other materials

IMPORTANT NOTE: TEST PRODUCT AND TANK MIX ON SMALL TEST AREA OF CROP TO DETERMINE POSSIBLE PHYTOTOXICITY BEFORE APPLYING TO WHOLE OF FIELD OR CROP

MIXING INSTRUCTIONS:

1. Product may settle, shake container well before mixing.
2. Put 2/3 of water in tank.
3. Add correct amount of Product
4. Add other chemicals or fertilizers, if any.
5. Fill tank with balance of water, agitate until thoroughly mixed.
6. Agitation may be required to maintain uniform mixing.

Caution: Do not use with antimicrobial water conditioners, or water containing levels not approved under EPA human drinking water standards. This includes but is not limited to Copper, Bleach, Fluoride, Chloramines, Chloride, Bactericides, Propiconazole (Slant™, Tilt™), Phosphoric Acid, Sulfuric acid.

CONDITIONS OF SALE AND LIMITATION OF WARRANTY AND LIABILITY

Limitation of Liability: In no event shall seller or manufacturer be liable for special, incidental or consequential damages, or for damages in the nature of penalties. Seller or manufacturer shall not be liable to buyer, by way of indemnification to customer or buyer, if any, for any damages, sums of money, claims or demands whatsoever, resulting from or by reason of, or rising out of the misuse or the failure to follow label warnings or instructions for use of the goods sold by the seller or manufacturer to buyer. Buyer's or user's exclusive remedy and seller's or manufacturer's total liability shall be for damages not exceeding the cost of the product. **Warranty disclaimer:** Ineffectiveness or other unintended consequences may result because of such factors as presence of other materials or the

manner of use or application, all of which are beyond the control of the seller or manufacturer. In no case shall seller or manufacturer be liable for consequential, special or indirect damages resulting from the use or handling of this product. The buyer or its customers shall assume all such risks. Tests have not been carried out under all possible conditions and seller or manufacturer cannot and does not warrant that the product is compatible with all other chemicals. Seller or manufacturer warrants that product is adequately contained, packaged and labeled and conforms to the affirmation of fact made on the container and label. Seller or manufacturer makes no other warranties, guarantees, or representations of any kind, either expressed or implied, or by usage of

trade, statutory or otherwise, with regard to the product sold, including, but not limited to merchantability, fitness for a particular purpose, use or eligibility of the product for any particular trade usage. Company and seller offer this product, and Buyer and User accept it, subject to the foregoing conditions of sale and limitations of warranty and of liability, which may not be modified except by written agreement signed by a duly authorized representative of Agrovive.

Directions for use:

SHAKE WELL, Store between 50°F and 97°F,
Store in Dark Place

Apply at rate of one (1) quart (946 ml) per acre.

Mix one (1) quart (946 ml) with approximately
10 Gallons of water for foliar application.

**Must Be Used Within 72 Hours of Breaking
Foil Seal Due To Potential Contamination,
otherwise the product is to be disposed of.**

Unopened Bottle Expires 12 Months From:

AGROVIVE™

315 North Heritage Parkway, Tea, SD 57064
agrovive.com | 1.888.638.2861

For proper agronomic application rates suitable for your geographical area or the maximum allowable non-nutrient application rate per acre, consult a trained soil specialist at Agrovive™ or call or write to Agrovive™ with the address provided.

2.5 U.S. GAL (9.46L).....Net Weight 25.03 LBS. (11.35KGS)
275 U.S. GAL (1040L).....Net Weight 2752.75LBS. (1248.6 KGS)

AGROVIVE™

Soy^{fx}™

SOYBEANS



Net Contents 2.5 GALLONS (9.46 Liters)



8 56304 00804 3



Soyfx 0-0-1

Guaranteed Analysis

Soluble Potash (K_2O) 1.00%

Derived from: Potassium carbonate

NONPLANT FOOD INGREDIENTS: Contains 1 million total colony forming units per gallon (1.0x10⁷) total CFU/gallon) of the following bacteria:

Bacillus megaterium 1.0 x 10⁵ CFU/ml
Bacillus Pumilus 1.0 x 10² CFU/ml

Purpose of ingredients: Improves soil structure.

Approved Crops: Soybean

Microorganisms exempt from CFR requirements: 40 CFR 725.

Handling Instructions: Store in a cool, dark place to maximize shelf life.

Precautions

IMPORTANT NOTE: TEST PRODUCT AND TANK MIX ON SMALL TEST AREA OF CROP TO DETERMINE POSSIBLE PHYTOTOXICITY BEFORE APPLYING TO WHOLE OF FIELD OR CROP.

Never mix spray concentrates directly together. Do "jar test" before mixing with other materials

IMPORTANT NOTE: TEST PRODUCT AND TANK MIX ON SMALL TEST AREA OF CROP TO DETERMINE POSSIBLE PHYTOTOXICITY BEFORE APPLYING TO WHOLE OF FIELD OR CROP

MIXING INSTRUCTIONS:

1. Product may settle, shake container well before mixing.
2. Put 2/3 of water in tank.
3. Add correct amount of Product
4. Add other chemicals or fertilizers, if any.
5. Fill tank with balance of water, agitate until thoroughly mixed.
6. Agitation may be required to maintain uniform mixing.

Caution: Do not use with antimicrobial water conditioners, or water containing levels not approved under EPA human drinking water standards. This includes but is not limited to Copper, Bleach, Fluoride, Chloramines, Chloride, Bactericides, Propiconazole (Slant™, Tilt™), Phosphoric Acid, Sulfuric acid.

CONDITIONS OF SALE AND LIMITATION OF WARRANTY AND LIABILITY

Limitation of Liability: In no event shall seller or manufacturer be liable for special, incidental or consequential damages, or for damages in the nature of penalties. Seller or manufacturer shall not be liable to buyer, by way of indemnification to customer or buyer, if any, for any damages, sums of money, claims or demands whatsoever, resulting from or by reason of, or rising out of the misuse or the failure to follow label warnings or instructions for use of the goods sold by the seller or manufacturer to buyer. Buyer's or user's exclusive remedy and seller's or manufacturer's total liability shall be for damages not exceeding the cost of the product. **Warranty disclaimer:** Ineffectiveness or other unintended consequences may result because of such factors as presence of other materials or the

manner of use or application, all of which are beyond the control of the seller or manufacturer. In no case shall seller or manufacturer be liable for consequential, special or indirect damages resulting from the use or handling of this product. The buyer or its customers shall assume all such risks. Tests have not been carried out under all possible conditions and seller or manufacturer cannot and does not warrant that the product is compatible with all other chemicals. Seller or manufacturer warrants that product is adequately contained, packaged and labeled and conforms to the affirmation of fact made on the container and label. Seller or manufacturer makes no other warranties, guarantees, or representations of any kind, either expressed or implied, or by usage of

trade, statutory or otherwise, with regard to the product sold, including, but not limited to merchantability, fitness for a particular purpose, use or eligibility of the product for any particular trade usage. Company and seller offer this product, and Buyer and User accept it, subject to the foregoing conditions of sale and limitations of warranty and of liability, which may not be modified except by written agreement signed by a duly authorized representative of Agrovive.

Directions for use:

SHAKE WELL, Store between 50°F and 97°F,
Store in Dark Place

Apply at rate of one (1) quart (946 ml) per acre.

Mix one (1) quart (946 ml) with approximately
10 Gallons of water for foliar application.

**Must Be Used Within 72 Hours of Breaking
Foil Seal Due To Potential Contamination,
otherwise the product is to be disposed of.**

Unopened Bottle Expires 12 Months From:

AGROVIVE™

315 North Heritage Parkway, Tea, SD 57064
agrovive.com | 1.888.638.2861

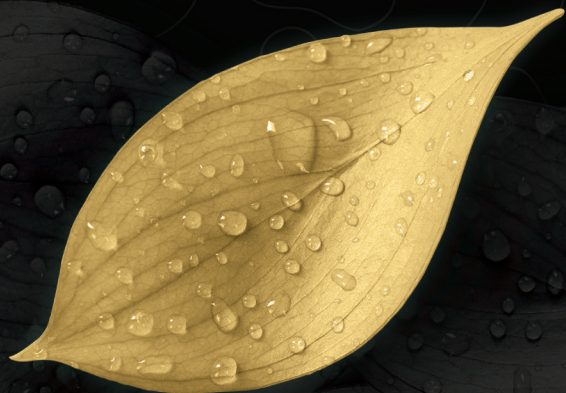
For proper agronomic application rates suitable for your geographical area or the maximum allowable non-nutrient application rate per acre, consult a trained soil specialist at Agrovive™ or call or write to Agrovive™ with the address provided.

2.5 U.S. GAL (9.46L).....Net Weight 25.03 LBS. (11.35KGS)
275 U.S. GAL (1040L)....Net Weight 2752.75LBS. (1248.6 KGS)

AGROVIVE™

SetTM*fx*

POTATO



Net Contents 2.5 GALLONS (9.46 Liters)



8 56304 00808 8



Setfx 0-0-1

Guaranteed Analysis

Soluble Potash (K_2O) 1.00%

Derived from: Potassium carbonate

NONPLANT FOOD INGREDIENTS: Contains 1 million total colony forming units per gallon (1.0×10^7) total CFU/gallon) of the following bacteria:

Bacillus megaterium 1.0×10^5 CFU/ml

Bacillus subtilis 1.0×10^2 CFU/ml

Purpose of ingredients: Improves soil structure.

Approved Crops: Potatoes

Microorganisms exempt from CFR requirements: 40 CFR 725.

Handling Instructions: Store in a cool, dark place to maximize shelf life.

Precautions

IMPORTANT NOTE: TEST PRODUCT AND TANK MIX ON SMALL TEST AREA OF CROP TO DETERMINE POSSIBLE PHYTOTOXICITY BEFORE APPLYING TO WHOLE OF FIELD OR CROP.

Never mix spray concentrates directly together. Do "jar test" before mixing with other materials

IMPORTANT NOTE: TEST PRODUCT AND TANK MIX ON SMALL TEST AREA OF CROP TO DETERMINE POSSIBLE PHYTOTOXICITY BEFORE APPLYING TO WHOLE OF FIELD OR CROP

MIXING INSTRUCTIONS:

1. Product may settle, shake container well before mixing.
2. Put 2/3 of water in tank.
3. Add correct amount of Product
4. Add other chemicals or fertilizers, if any.
5. Fill tank with balance of water, agitate until thoroughly mixed.
6. Agitation may be required to maintain uniform mixing.

Caution: Do not use with antimicrobial water conditioners, or water containing levels not approved under EPA human drinking water standards. This includes but is not limited to Copper, Bleach, Fluoride, Chloramines, Chloride, Bactericides, Propiconazole (Slant™, Tilt™), Phosphoric Acid, Sulfuric acid.

CONDITIONS OF SALE AND LIMITATION OF WARRANTY AND LIABILITY

Limitation of Liability: In no event shall seller or manufacturer be liable for special, incidental or consequential damages, or for damages in the nature of penalties. Seller or manufacturer shall not be liable to buyer, by way of indemnification to customer or buyer, if any, for any damages, sums of money, claims or demands whatsoever, resulting from or by reason of, or rising out of the misuse or the failure to follow label warnings or instructions for use of the goods sold by the seller or manufacturer to buyer. Buyer's or user's exclusive remedy and seller's or manufacturer's total liability shall be for damages not exceeding the cost of the product. **Warranty disclaimer:** Ineffectiveness or other unintended consequences may result because of such factors as presence of other materials or the

manner of use or application, all of which are beyond the control of the seller or manufacturer. In no case shall seller or manufacturer be liable for consequential, special or indirect damages resulting from the use or handling of this product. The buyer or its customers shall assume all such risks. Tests have not been carried out under all possible conditions and seller or manufacturer cannot and does not warrant that the product is compatible with all other chemicals. Seller or manufacturer warrants that product is adequately contained, packaged and labeled and conforms to the affirmation of fact made on the container and label. Seller or manufacturer makes no other warranties, guarantees, or representations of any kind, either expressed or implied, or by usage of

trade, statutory or otherwise, with regard to the product sold, including, but not limited to merchantability, fitness for a particular purpose, use or eligibility of the product for any particular trade usage. Company and seller offer this product, and Buyer and User accept it, subject to the foregoing conditions of sale and limitations of warranty and of liability, which may not be modified except by written agreement signed by a duly authorized representative of Agrovive.

Directions for use:

SHAKE WELL, Store between 50°F and 97°F,
Store in Dark Place

Apply at rate of one (1) quart (946 ml) per acre.

Mix one (1) quart (946 ml) with approximately
10 Gallons of water for foliar application.

**Must Be Used Within 72 Hours of Breaking
Foil Seal Due To Potential Contamination,
otherwise the product is to be disposed of.**

Unopened Bottle Expires 12 Months From:

AGROVIVE™

315 North Heritage Parkway, Tea, SD 57064
agrovive.com | 1.888.638.2861

For proper agronomic application rates suitable for your geographical area or the maximum allowable non-nutrient application rate per acre, consult a trained soil specialist at Agrovive™ or call or write to Agrovive™ with the address provided.

2.5 U.S. GAL (9.46L).....Net Weight 25.03 LBS. (11.35KGS)
275 U.S. GAL (1040L).....Net Weight 2752.75LBS. (1248.6 KGS)

AGROVIVE™

PODTM*fx*

EDIBLE BEANS



8 56304 00807 6

Net Contents 2.5 GALLONS (9.46 Liters)

**Podfx 0-0-1**

Guaranteed Analysis

Soluble Potash (K_2O) 1.00%**Derived from:** Potassium carbonate**NONPLANT FOOD INGREDIENTS:** Contains 1 million total colony forming units per gallon (1.0×10^7) total CFU/gallon) of the following bacteria:Bacillus megaterium 1.0×10^5 CFU/mlErwinia aphidicola 1.0×10^2 CFU/ml**Purpose of ingredients:** Improves soil structure.**Approved Crops:** Edible Legumes (Dry Beans, Dry Peas, Lentils, Chickpeas, Southern Peas, Peanuts)**Microorganisms exempt from CFR requirements:** 40 CFR 725.**Handling Instructions:** Store in a cool, dark place to maximize shelf life.**Precautions****IMPORTANT NOTE:** TEST PRODUCT AND TANK MIX ON SMALL TEST AREA OF CROP TO DETERMINE POSSIBLE PHYTOTOXICITY BEFORE APPLYING TO WHOLE OF FIELD OR CROP.**Never mix spray concentrates directly together. Do "jar test" before mixing with other materials****IMPORTANT NOTE: TEST PRODUCT AND TANK MIX ON SMALL TEST AREA OF CROP TO DETERMINE POSSIBLE PHYTOTOXICITY BEFORE APPLYING TO WHOLE OF FIELD OR CROP****MIXING INSTRUCTIONS:**

1. Product may settle, shake container well before mixing.
2. Put 2/3 of water in tank.
3. Add correct amount of Product
4. Add other chemicals or fertilizers, if any.
5. Fill tank with balance of water, agitate until thoroughly mixed.
6. Agitation may be required to maintain uniform mixing.

Caution: Do not use with antimicrobial water conditioners, or water containing levels not approved under EPA human drinking water standards. This includes but is not limited to Copper, Bleach, Fluoride, Chloramines, Chloride, Bacteriocides, Propiconazole (Slant™, Tilt™), Phosphoric Acid, Sulfuric acid.**CONDITIONS OF SALE AND LIMITATION OF WARRANTY AND LIABILITY**

Limitation of Liability: In no event shall seller or manufacturer be liable for special, incidental or consequential damages, or for damages in the nature of penalties. Seller or manufacturer shall not be liable to buyer, by way of indemnification to customer or buyer, if any, for any damages, sums of money, claims or demands whatsoever, resulting from or by reason of, or rising out of the misuse or the failure to follow label warnings or instructions for use of the goods sold by the seller or manufacturer to buyer. Buyer's or user's exclusive remedy and seller's or manufacturer's total liability shall be for damages not exceeding the cost of the product. **Warranty disclaimer:** Ineffectiveness or other unintended consequences may result because of such factors as presence of other materials or the

manner of use or application, all of which are beyond the control of the seller or manufacturer. In no case shall seller or manufacturer be liable for consequential, special or indirect damages resulting from the use or handling of this product. The buyer or its customers shall assume all such risks. Tests have not been carried out under all possible conditions and seller or manufacturer cannot and does not warrant that the product is compatible with all other chemicals. Seller or manufacturer warrants that product is adequately contained, packaged and labeled and conforms to the affirmation of fact made on the container and label. Seller or manufacturer makes no other warranties, guarantees, or representations of any kind, either expressed or implied, or by usage of

trade, statutory or otherwise, with regard to the product sold, including, but not limited to merchantability, fitness for a particular purpose, use or eligibility of the product for any particular trade usage. Company and seller offer this product, and Buyer and User accept it, subject to the foregoing conditions of sale and limitations of warranty and of liability, which may not be modified except by written agreement signed by a duly authorized representative of Agrovive.

Directions for use:

SHAKE WELL, Store between 50°F and 97°F,
Store in Dark Place

Apply at rate of one (1) quart (946 ml) per acre.

Mix one (1) quart (946 ml) with approximately
10 Gallons of water for foliar application.

**Must Be Used Within 72 Hours of Breaking
Foil Seal Due To Potential Contamination,
otherwise the product is to be disposed of.****Unopened Bottle Expires 12 Months From:****AGROVIVE™**

315 North Heritage Parkway, Tea, SD 57064
agrovive.com | 1.888.638.2861

For proper agronomic application rates suitable for your geographical area or the maximum allowable non-nutrient application rate per acre, consult a trained soil specialist at Agrovive™ or call or write to Agrovive™ with the address provided.

2.5 U.S. GAL (9.46L).....Net Weight 25.03 LBS. (11.35KGS)
275 U.S. GAL (1040L).....Net Weight 2752.75LBS. (1248.6 KGS)

AGROVIVE™

alphaTMjoule

ALFALFA



Net Contents 2.5 GALLONS (9.46 Liters)



8 56304 00800 3

**AlphaJoule 0-0-1**

Guaranteed Analysis

Soluble Potash (K₂O) 1.00%**Derived from:** Potassium carbonate

NONPLANT FOOD INGREDIENTS: Contains 400 million total colony forming units per gallon (4.0x10⁸) total CFU/gallon) of the following bacteria:

Pseudomonas fluorescense 1.0 x 10⁵ CFU/mlBacillus megaterium 1.0 x 10² CFU/ml**Purpose of ingredients:** Improves soil structure.**Approved Crops:** Alfalfa, Clover**Microorganisms exempt from CFR requirements:** 40 CFR 725.**Handling Instructions:** Store in a cool, dark place to maximize shelf life.**Precautions**

IMPORTANT NOTE: TEST PRODUCT AND TANK MIX ON SMALL TEST AREA OF CROP TO DETERMINE POSSIBLE PHYTOTOXICITY BEFORE APPLYING TO WHOLE OF FIELD OR CROP.

Never mix spray concentrates directly together. Do "jar test" before mixing with other materials

IMPORTANT NOTE: TEST PRODUCT AND TANK MIX ON SMALL TEST AREA OF CROP TO DETERMINE POSSIBLE PHYTOTOXICITY BEFORE APPLYING TO WHOLE OF FIELD OR CROP

MIXING INSTRUCTIONS:

1. Product may settle, shake container well before mixing.
2. Put 2/3 of water in tank.
3. Add correct amount of Product
4. Add other chemicals or fertilizers, if any.
5. Fill tank with balance of water, agitate until thoroughly mixed.
6. Agitation may be required to maintain uniform mixing.

Caution: Do not use with antimicrobial water conditioners, or water containing levels not approved under EPA human drinking water standards. This includes but is not limited to Copper, Bleach, Fluoride, Chloramines, Chloride, Bactericides, Propiconazole (Slant™, Tilt™), Phosphoric Acid, Sulfuric acid.

CONDITIONS OF SALE AND LIMITATION OF WARRANTY AND LIABILITY

Limitation of Liability: In no event shall seller or manufacturer be liable for special, incidental or consequential damages, or for damages in the nature of penalties. Seller or manufacturer shall not be liable to buyer, by way of indemnification to customer or buyer, if any, for any damages, sums of money, claims or demands whatsoever, resulting from or by reason of, or rising out of the misuse or the failure to follow label warnings or instructions for use of the goods sold by the seller or manufacturer to buyer. Buyer's or user's exclusive remedy and seller's or manufacturer's total liability shall be for damages not exceeding the cost of the product. **Warranty disclaimer:** Ineffectiveness or other unintended consequences may result because of such factors as presence of other materials or the

manner of use or application, all of which are beyond the control of the seller or manufacturer. In no case shall seller or manufacturer be liable for consequential, special or indirect damages resulting from the use or handling of this product. The buyer or its customers shall assume all such risks. Tests have not been carried out under all possible conditions and seller or manufacturer cannot and does not warrant that the product is compatible with all other chemicals. Seller or manufacturer warrants that product is adequately contained, packaged and labeled and conforms to the affirmation of fact made on the container and label. Seller or manufacturer makes no other warranties, guarantees, or representations of any kind, either expressed or implied, or by usage of

trade, statutory or otherwise, with regard to the product sold, including, but not limited to merchantability, fitness for a particular purpose, use or eligibility of the product for any particular trade usage. Company and seller offer this product, and Buyer and User accept it, subject to the foregoing conditions of sale and limitations of warranty and of liability, which may not be modified except by written agreement signed by a duly authorized representative of Agrovive.

Directions for use:

SHAKE WELL, Store between 50°F and 97°F,
Store in Dark Place

Apply at rate of one (1) quart (946 ml) per acre.

Mix one (1) quart (946 ml) with approximately
10 Gallons of water for foliar application.

**Must Be Used Within 72 Hours of Breaking
Foil Seal Due To Potential Contamination,
otherwise the product is to be disposed of.**

Unopened Bottle Expires 12 Months From:

315 North Heritage Parkway, Tea, SD 57064
agrovive.com | 1.888.638.2861

For proper agronomic application rates suitable for your geographical area or the maximum allowable non-nutrient application rate per acre, consult a trained soil specialist at Agrovive™ or call or write to Agrovive™ with the address provided.

2.5 U.S. GAL (9.46L).....Net Weight 25.03 LBS. (11.35KGS)
275 U.S. GAL (1040L).....Net Weight 2752.75LBS. (1248.6 KGS)