



## 16<sup>th</sup> Street Viaduct Re-Decking Project Community Meeting January 9, 2025



# MEETING AGENDA

1. Introduction to the Moline Centre Program
2. Rock Island Arsenal Viaduct – history, purpose, and needs
3. Arsenal Viaduct Project – summary, timeline, and impacts
4. Project Perspectives – local leadership
5. Ramp Up! Moline – solutions-focused plan
6. Guiding Resources
7. Supporting Ramp Up! Moline
8. Questions and comments



# Introduction to the Moline Centre Program

- Administered by Renew Moline, under contract with the City of Moline
- “Manages the downtown experience”
- Provides support to those who live, work, and own property in downtown Moline
- Develops and coordinates strategic communications for marketing/branding
- Executes event planning, support, and promotion
- Manages vendor contracts to ensure a clean, safe, and appealing environment
- Serves as a liaison to the City on behalf of downtown community
- Facilitates merchants group meetings and networking events





# Moline Centre Program Map

Map Created 12/13/2024

City of Moline GIS

0 500 1,000 2,000 Feet

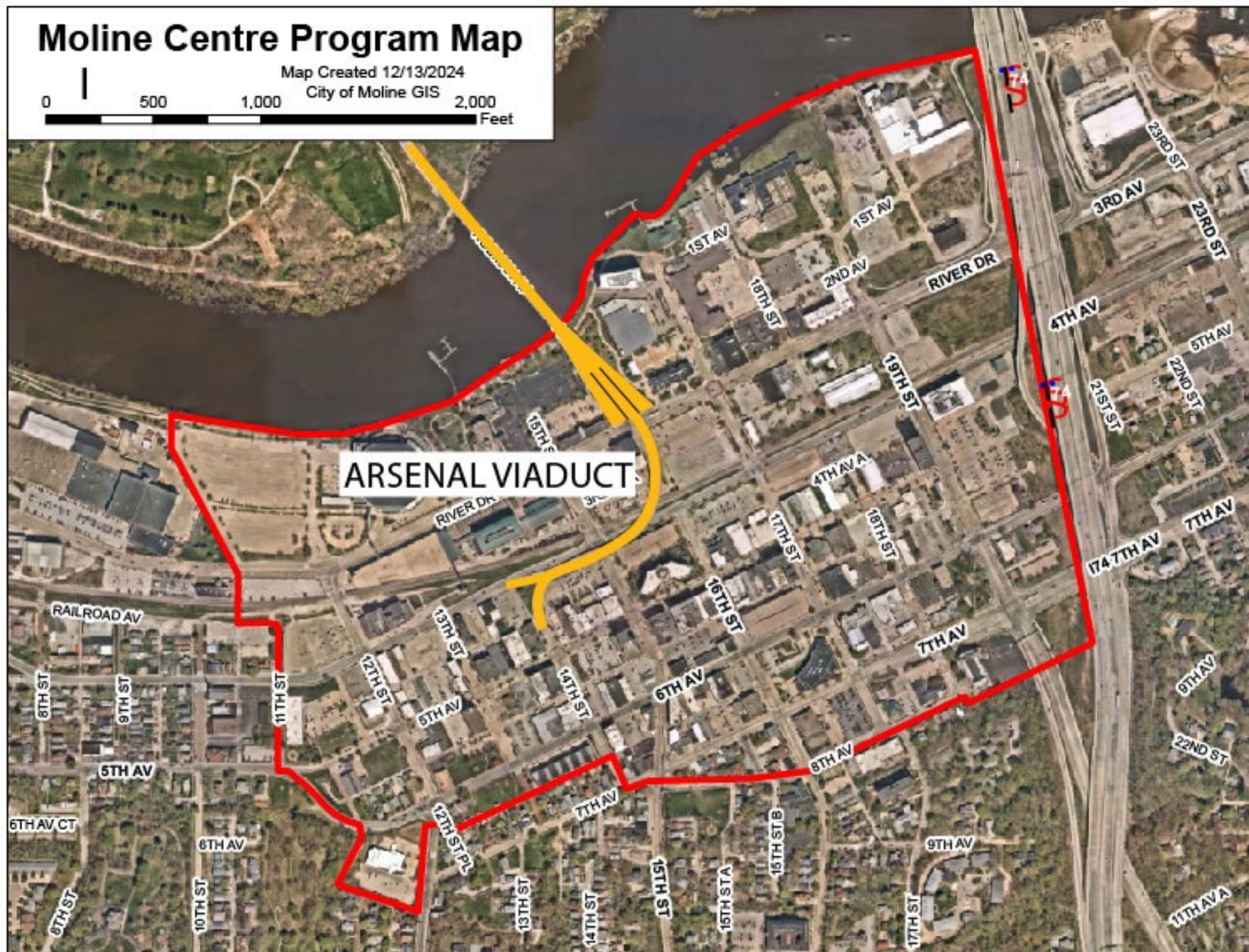




# Moline Centre Program Map

Map Created 12/13/2024  
City of Moline GIS

0 500 1,000 2,000 Feet





# 16TH STREET ARSENAL VIADUCT FACTS



- Originally constructed in 1982
- Vital transportation artery connecting the City of Moline and the QC region with the Rock Island Arsenal
- Viaduct provides direct access for commuters, materials, and military equipment traveling between Arsenal Island and Moline
  - RI Arsenal is the QC's 2<sup>nd</sup> largest employer – 6,300 employees
  - Over 60 Dept. of Defense organizations and private enterprises
  - Expanded on-base housing – 71 new 3-4-bedroom single-family houses added in 2018
- Critical emergency services route
  - City's first responders can cross over the 4<sup>th</sup> Avenue railroad tracks during emergencies
  - City and Arsenal provide emergency response support - Mutual Aid Box Alarm System (MABAS) 43
  - Rock Island, East Moline, Bettendorf, and QC International Airport are also part of MABAS 43
  - Includes a Hazardous Materials Response Team



# 16<sup>TH</sup> STREET ARSENAL VIADUCT ISSUES

Repairs to the viaduct's bearings, piers, and deck occurred in 2004 and 2015

2020 IMEG viaduct inspection recommendations included:

- Replace the entire deck
- Remove loose and spalling concrete from deck underside
- Repaint the spans

2022 IMEG bridge inspection report:

- Expansion joint cracking and spalling
- Abutment erosion, corrosion, and spalling
- Paint system deterioration
- Span delamination – exposed rebar
- Could not inspect areas of spall protections (pictured at right)

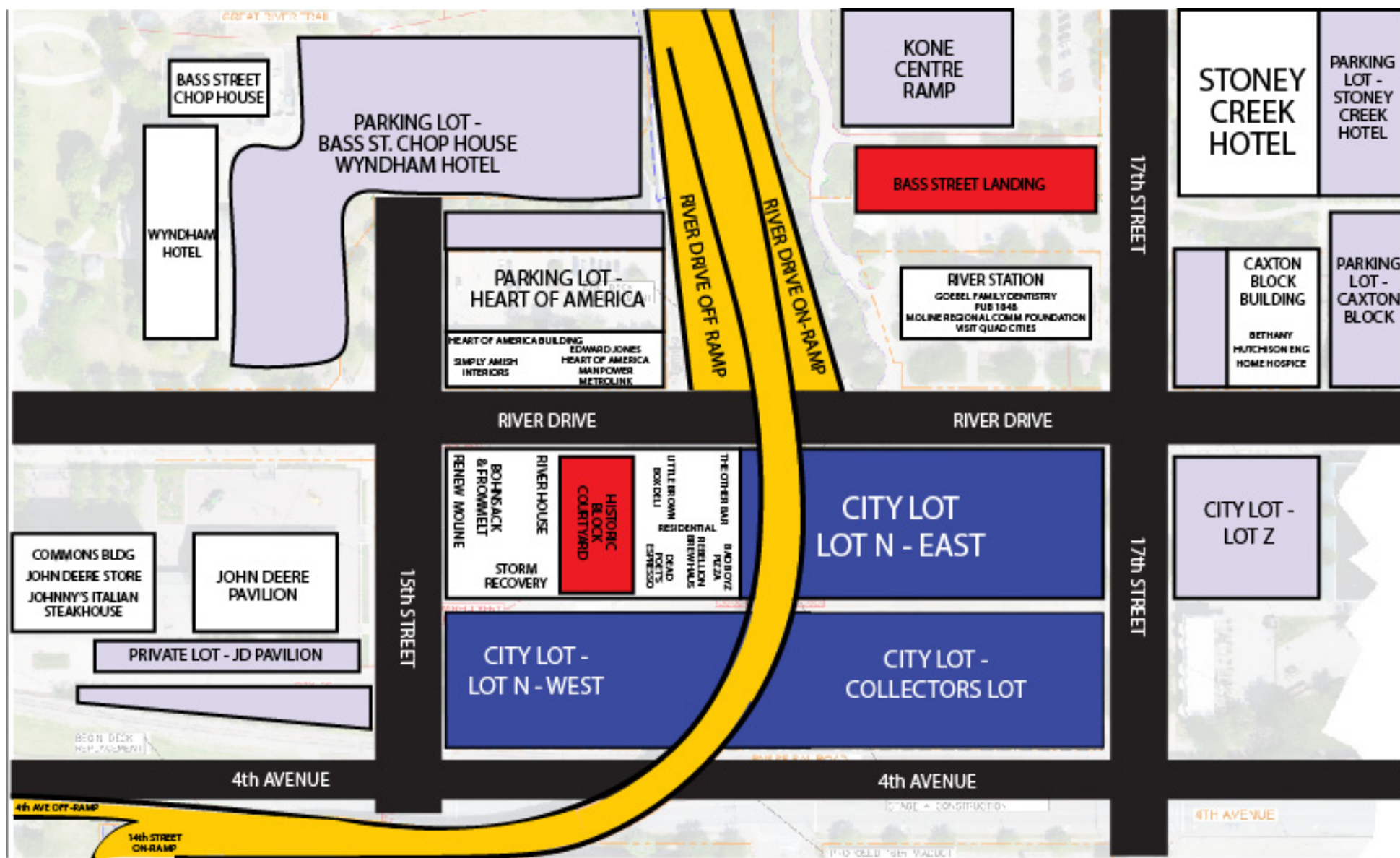


News Coverage:

“Falling concrete in downtown Moline is creating safety problems, says downtown alehouse” – WQAD, 8/11/21

- “large sections broke off into almost frisbee-sized pieces”
- “staff have also found what appears to be a rebar tie, fallen off the bridge”









**City of Moline Critical Bridge Connectivity Project for Rock Island**  
**(“16<sup>th</sup> Street Viaduct Re-Decking Project” or “Arsenal Via**

- ### PROJECT SCHEDULE

### DETOUR SCHEDULE

**RIVER DRIVE CLOSURE** - will occur during Stage 4. River Drive will remain open during Winter Shutdown. Closure will begin late summer in season 2 (2026). Total duration of closure will be approximately 11 weeks. Short term closures of 4th Avenue will also occur during this stage. River Drive and 4th Avenue will not be closed at the same time.

**STAGGERED INTERMITTENT SHORT-TERM CLOSURES OF 4th AVENUE AND RIVER DRIVE** - will occur later in season 2 (late summer 2026 to winter 2027). Either 4th Avenue or River Drive will be always open. Total duration of staggered closures will be approximately 13 weeks.

16TH STREET VIADUCT MOLINE, ILLINOIS PROPOSED CONSTRUCTION EXHIBIT		 IMEG 800 LAUREL, SUITE 100 FARMINGTON, CT 06030 TEL: 860.634.1100 FAX: 860.634.1101 WWW.IMEG-INC.COM		REVISIONS	
IMEG Project No: 230014277.00 File Name: 16TH STREET VIADUCT - MOBILE ILLINOIS - PROPOSED CONSTRUCTION EXHIBIT.dwg © Copyright: 2024 All rights reserved Field Book No: Drawn By: WAN Checked By: JDL Date: 04/16/2024		No.		DESCRIPTION	
1		1		REMOVED PROBABLY UNKNOWN AND ASSOCIATED FACTORS AND NOTES	
		2		ADDED SLOTTED STRUCTURE AT BASE OF MAIN INLET BRIDGE	
Sheet 1 of 1				DATE 7/5/20 9/9/20	



**City of Moline Critical Bridge Connectivity Plan**  
 ("16<sup>th</sup> Street Viaduct Re-Decking Project")

The map illustrates the proposed 16th Street Viaduct Re-Decking Project in Moline, Illinois. Key features include:

- Streets:** 16th Street, 2nd Avenue, 4th Avenue, 5th Street, River Drive, Montgomery Drive, Bass Street, and 15th Street.
- Businesses and Landmarks:** Bass Street Chop House, Wyndham Hotel, John Deere Pavilion, Heart of America Building, Visit Quad Cities Goebel Dentistry, Kone Center Parking, Bass Street Landing, City of Moline Parking, and various other commercial and residential buildings.
- Infrastructure:** The Mississippi River, Great River Trail, and the 16th Street Viaduct.
- Project Phases:** The map shows the proposed 16th Viaduct Deck Replacement and the 4th Avenue Viaduct Deck Replacement, with temporary covered structures for pedestrian access during construction.
- City Jurisdiction:** The City of Moline's jurisdiction is outlined in orange, and the City of Moline's jurisdiction is outlined in blue.

Anticipated start date: July 2025  
Anticipated completion date: Late 2026 or early 2027  
Funding source: Fully funded by a federal grant awarded through the Defense Community Infrastructure Program (DCIP) - \$11.5 million

- Replacement of current bridge deck, parapets, and lighting
- Spot repairs to the steel support beams
- Some limited column patching may also be required

The Arsenal on-ramp and off-ramp at River Drive are expected to always remain OPEN to public traffic during the project

The Arsenal on-ramp at 14<sup>th</sup> Street and off-ramp at 4<sup>th</sup> Avenue will be CLOSED to public traffic during the project

## TENTATIVE PROJECT TIMELINE – 2025-2026

SPRING 2025 – Project bids and contractor hire

JULY 2025 – Remove entire bridge deck, starting at River Drive and moving south and west (approximately 3 weeks)  
- River Drive will be closed for approximately one week during this step

JULY/AUGUST 2025 UNTIL WINTER SHUTDOWN - STAGES 1-3 - 4<sup>th</sup> Avenue will be CLOSED during this period  
- Short-term closures of River Drive may happen, too, but River Drive and 4<sup>th</sup> Avenue will not be closed simultaneously

WINTER SHUTDOWN (JANUARY AND FEBRUARY 2026)

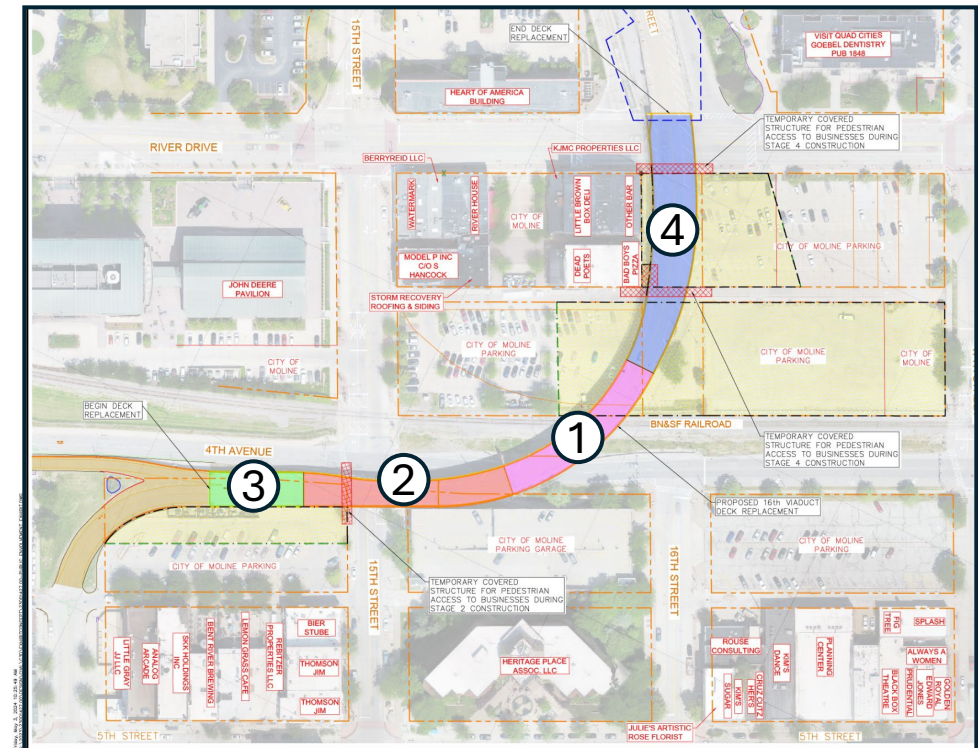
- 4<sup>th</sup> Avenue and River Drive will be open

PROJECT RESUMES – MARCH 2026

- 4<sup>th</sup> Avenue will be closed for completion of stages 1-3

LATE SUMMER 2026 - STAGE 4 BEGINS

- River Drive will be closed (approximately 11 weeks)  
- Short-term closures of 4<sup>th</sup> Avenue may happen, but River Drive will not be closed simultaneously





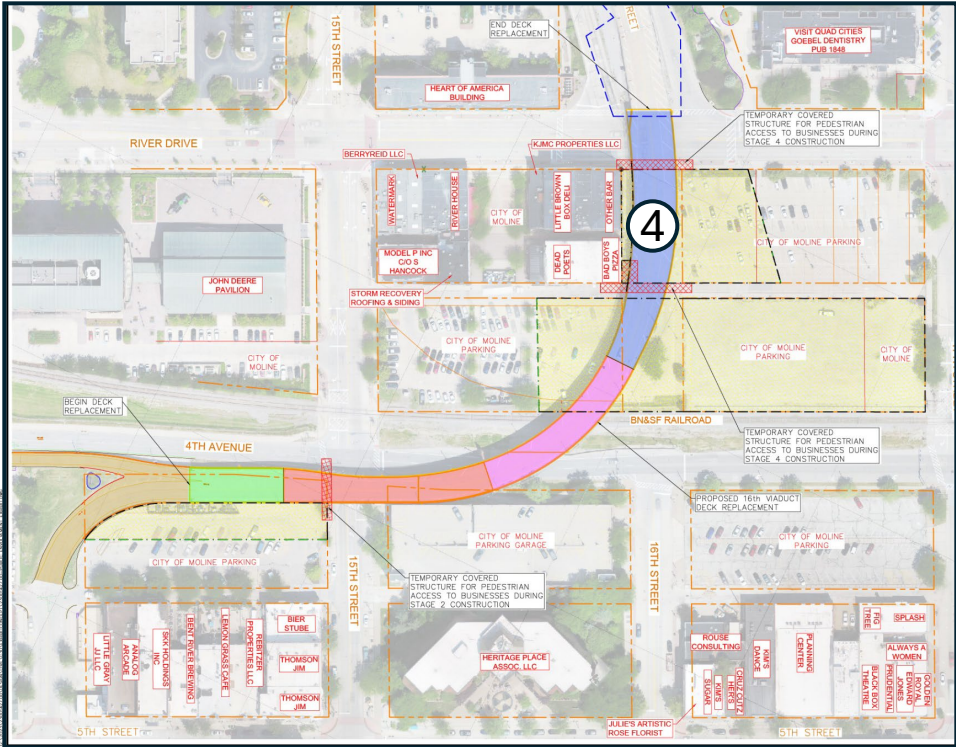
# TENTATIVE PROJECT TIMELINE – 2027 (if project is not completed in 2026)

## WINTER SHUTDOWN (JANUARY AND FEBRUARY 2027)

- River Drive and 4<sup>th</sup> Avenue will be open

## PROJECT RESUMES – MARCH 2027

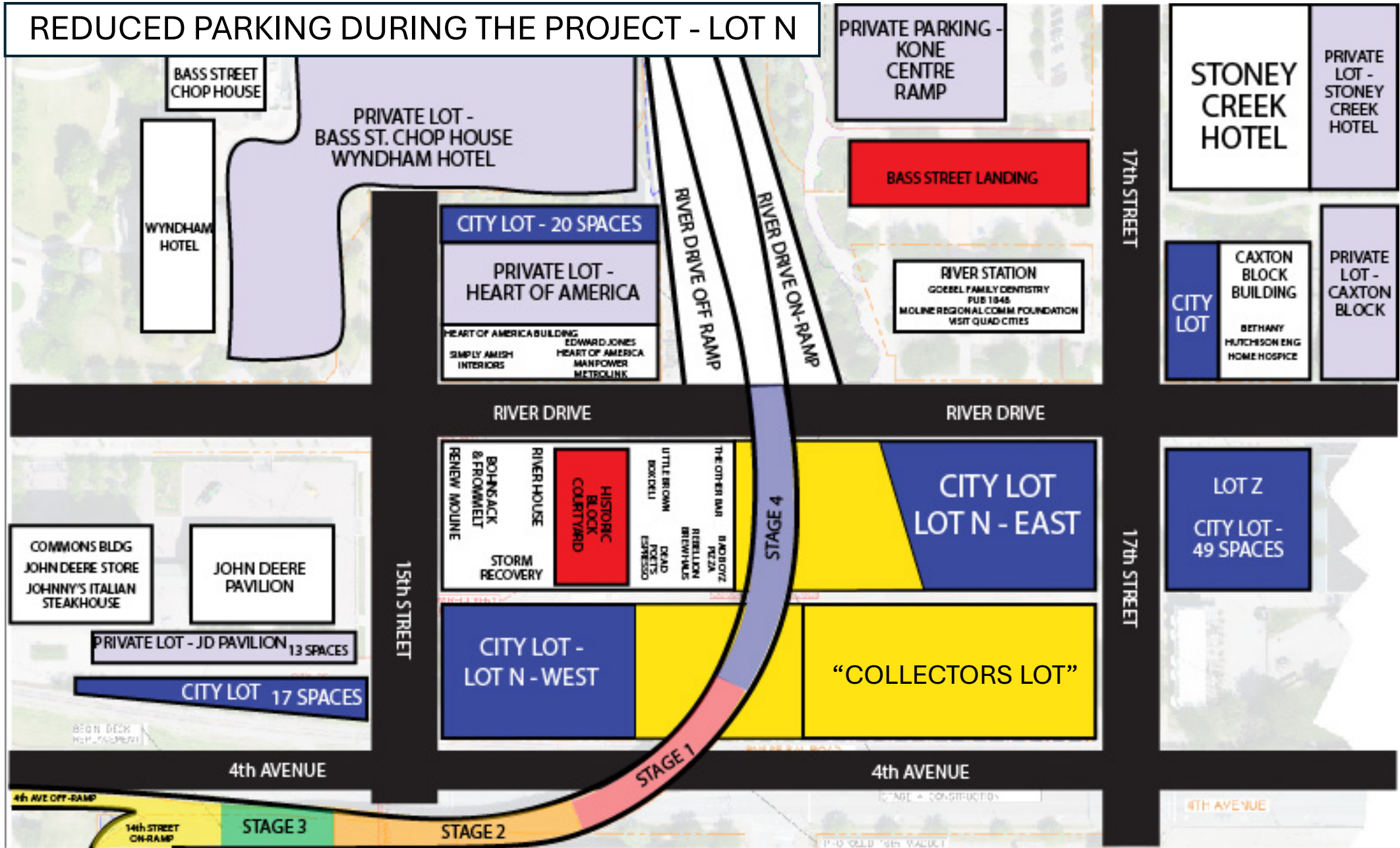
- River Drive will be closed
- Short-term closures of 4<sup>th</sup> Avenue may happen, but River Drive will not be closed simultaneously



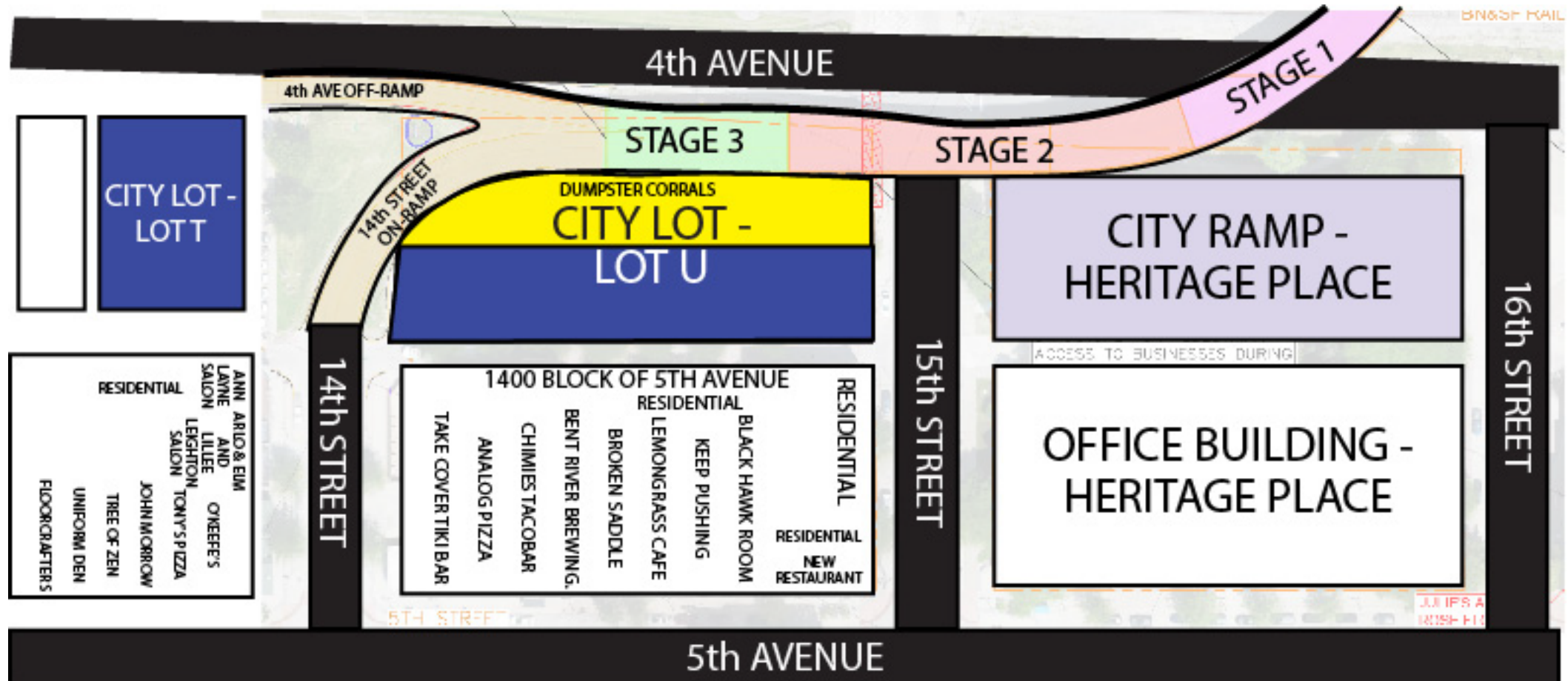




## REDUCED PARKING DURING THE PROJECT - LOT N



## REDUCED PARKING DURING THE PROJECT - LOT U



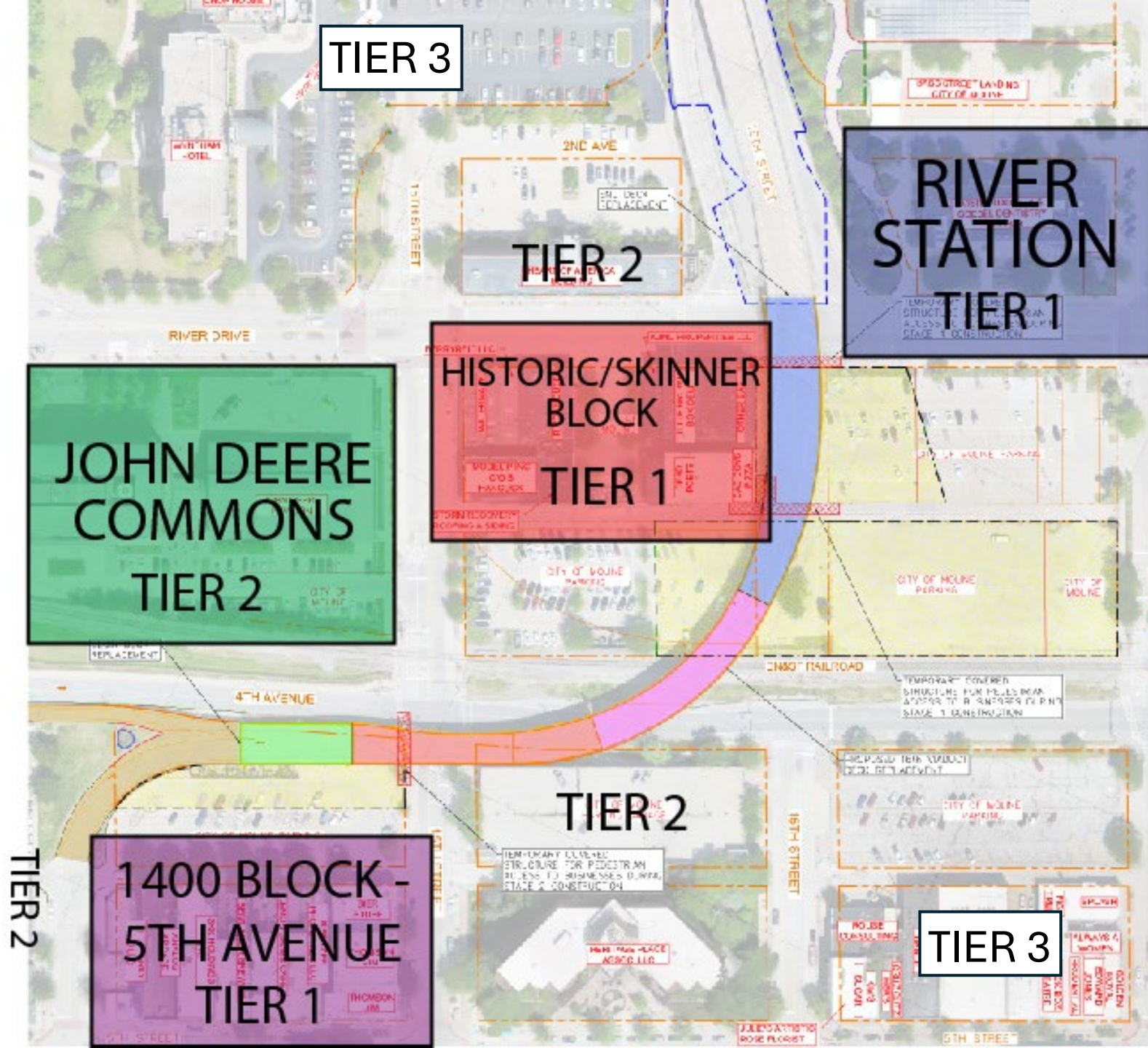












TIER 3

TIER 2

RIVER  
STATION  
TIER 1

JOHN DEERE  
COMMONS  
TIER 2

HISTORIC/SKINNER  
BLOCK  
TIER 1

TIER 2

1400 BLOCK -  
5TH AVENUE  
TIER 1

TIER 2

TIER 3

TIER 2

- TIER 1 PROPERTIES
- Analog Pizza & Arcade
  - Bad Boyz Pizza
  - Bent River Brewing Co.
  - Bohnsack & Frommelt
  - Boston Lofts
  - Broken Saddle
  - Chimie's Tacobar
  - Dead Poet's Espresso
  - GM Ford Block (apts)
  - Goebel Family Dentistry
  - Harold's Chicken
  - Keep Pushing Skate Shop
  - Lemongrass Cafe
  - Little Brown Box Deli
  - Moline Regional CF
  - Pierr Block (apts)
  - Pub 1848
  - Rebellion Brew Haus
  - Renew Moline
  - River House Bar & Grill
  - Storm Recovery
  - Take Cover Tiki Club
  - The Other Bar
  - Visit QC Destination Ctr







## PROJECT PERSPECTIVES

“The City of Moline is very appreciative for the funds provided by the US DOD through the Defense Community Infrastructure Program. The grant will provide all the funding necessary to replace the critical 16<sup>th</sup> Street Viaduct bridge to 14<sup>th</sup> Street at no cost to Moline. The City has built a close relationship with the US military on the Rock Island Arsenal and this project will continue to support this most significant employer in Moline and the greater Quad Cities.”

– Bob Vitas, Moline City Administrator

“Working with our surrounding communities to improve access to the installation is one of our top priorities. This project benefits The City of Moline and the installation, as well as those that live, work and visit the Arsenal”

– Col. William “Joe” Parker, Commander of U.S. Garrison Rock Island Arsenal

“Every day, thousands of Rock Island Arsenal employees use this bridge to get to their jobs. And for years, this bridge needed to be repaired. This important funding coming to Moline to fix this bridge will not only make it safer for my neighbors to get to work, But it will also create good-paying jobs in the process.”

- Congressman Eric Sorensen

Special thanks to Dawn Temple, the City’s Grants Manager and Management Analyst who is the lead author and coordinator of this grant opportunity.



# Introduction to Ramp Up! Moline

Solutions-focused plan coordinated by Renew Moline, the Moline Centre Program, and the City of Moline (staff, leadership, and elected officials)

Implemented in collaboration with, and in support of, downtown merchants (business owners and employees), residents, and property owners

## 3-POINT APPROACH

### 1) Strategic parking management

- Prioritizes customer and visitor parking
- Proposes designated parking spaces for employees and residents
- Coordinates commercial loading zone needs
- Facilitates parking enforcement to execute parking management plan

### 2) Merchant support

- Special event coordination and promotion with event-focused marketing
- Increased promotional support on Moline Centre platforms

### 3) Targeted messaging

- “Internal messaging” for the downtown community – i.e. project updates
- “External messaging” for the public – i.e. detour information, marketing and promotion





# Guiding Resources for Ramp Up! Moline



It's Happening! 6<sup>th</sup> Street – Quincy, Illinois



How to Survive and Thrive During Construction –  
Main Street America



The Impacts of Arts Events Venues on Smaller Downtowns –  
The Economic Development Journal

# Supporting Ramp Up! Moline

- Complete the survey form to provide:
  - Your contact information and opt-in to the Ramp Up! Moline contact list
  - Information about your current parking needs
  - Information about your current dumpster and commercial delivery needs
  - Information about your events and event promotion
- Add the Moline Centre merchant group meetings to your calendar and attend the February 20, 2025, merchant group meeting
- Encourage other merchants, residents, and property owners to get engaged
- Keep messaging positive in-person and on social media
- Add your events to the Moline Centre Program event calendar
- Offer discounts via the City of Moline Compass ID
- Offer a “quick lunch” menu or discounts for project workers
- Support downtown Moline events – arena, City, merchant, and Moline Centre Program events

The level of success of the Ramp Up! Moline plan is directly related to the level of engagement from downtown Moline merchants, residents, and property owners, so please sign up today!





## NEXT STEPS – FOR YOU

Complete your survey TODAY with as much information as you can provide  
Complete a survey for each property and/or business that you own

## NEXT STEPS – FOR ME

Compile the Ramp Up! Moline survey results  
Follow-up with merchants and property owners for more information, as needed  
Develop a parking management proposal for the City  
Develop a marketing and promotion strategy  
Execute the Ramp Up! Moline plan in coordination with the City and the downtown community



# Questions and comments

David Dryer, Director of Engineering, City of Moline

George Ryan, VP Construction Services, Terra Engineering, Ltd.

[www.molinecentre.org/projects](http://www.molinecentre.org/projects)

Follow-up contact information:

Kirk Marske

Moline Centre Program Manager

(309) 762-9190

[kmarske@renewmoline.com](mailto:kmarske@renewmoline.com)

