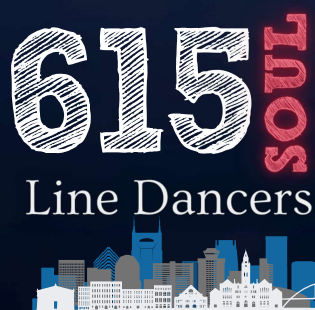


2024

Annual Report



*Building
Awareness with
Impactful
Programming*



www.615SoulLineDance.org

Table of Contents

Letter from the President	3
---------------------------	---

The Who, What, & Why of 615 Soul	4
----------------------------------	---

Our Board	6
-----------	---

Celebrating Our Achievements	7
------------------------------	---

Financial Statements	14
----------------------	----

Looking Ahead	18
---------------	----

2025 Budget	24
-------------	----



TO OUR COMMUNITY:

As we reflect on an extraordinary year, I am filled with gratitude for the milestones we've achieved together. On behalf of 615 Soul Line Dance, thank you to our donors, volunteers, dancers, and community partners who made it all possible.

Celebrating Our Achievements In 2024, we hosted our inaugural Bi-Annual Soiree: NashVegas Nights, a sold-out sensation that brought a different flare to the soul line dance community. We were honored to be featured on Harlem Globetrotters: Play It Forward (Season 3, Episode 1), showcasing the joy and inclusivity of soul line dancing. We launched our Health & Wellness Pop-Up Series, empowering and encouraging movement and wellness education in our urban communities. Lastly, we proudly welcomed Move with Coop and Step Lyte with Bryce into the 615 Soul Line Dance organization, further expanding our accessibility and enriching our programming.

Looking Ahead In 2025, we look to Move with Intent by continuing to expand our reach and bringing in new instructors, being consistent in our overall messaging and introducing our Timeline of Events, and committing ourselves to our goals, mission, and purpose. We also ask YOU to pledge your support to this journey to Expansion, Consistency, and Commitment (EC²) as well.

Thank You None of this would be possible without your unwavering support. Together, we are creating a legacy of joy, movement, and unity. Here's to the year of **Moving with Intent**.

With gratitude and hope,



Earin Rose

President and Treasurer

WHO WE ARE

615 Soul Line Dance is an official 501(c)(3) nonprofit organization established in December of 2022. We are a collective of volunteer soul line dance instructors from across Metro Nashville.

WHAT WE ARE

We embody the core values that guide our steps.

RESPECT

INCLUSIVENESS

COLLABORATION

COMMITMENT

TRANSPARENCY



615 SOUL LINE DANCE CLASSES



OUR WHY

Our purpose is to improve health throughout the urban communities for people who love to line dance.

WHAT WE ARE DOING

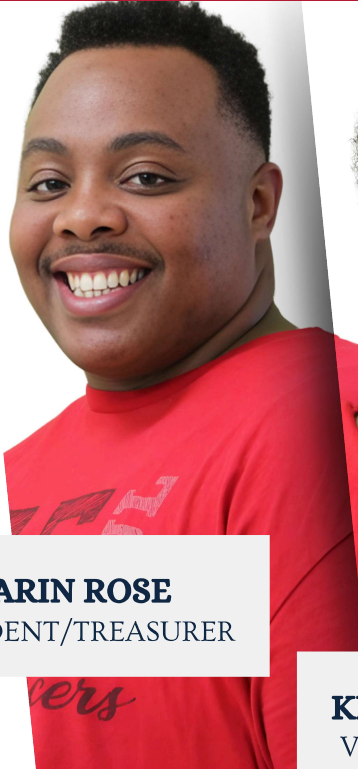
The mission of 615 Soul Line Dance is to encourage physical activity through the art of soul line dancing while promoting heart health, mental wellness, and fellowship.

We look to achieve our mission by:

1. providing soul line dancing classes to the general public to promote heart health and mental wellness;
2. hosting, participating and/or sponsoring events and activities that engage the public in the art of soul line dancing;
3. providing opportunities for line dancers to engage with the community.

OUR BOARD

BOARD OFFICERS



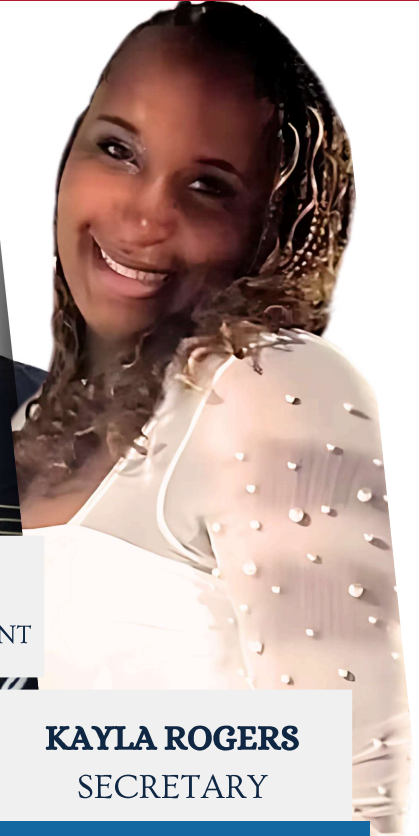
EARIN ROSE
PRESIDENT/TREASURER



KE'ANNA ROSE
VICE PRESIDENT



CATRINA DANIEL
COMMUNITY ENGAGEMENT



KAYLA ROGERS
SECRETARY

BOARD MEMBERS



NICOLE COOPER



BENEÉ WISDOM



**NIKKI HENDRICKS-
BOLLING**



KENNETH DOZIER



CELEBRATING OUR ACHIEVEMENTS



BUILDING AWARENESS



APPEARANCE

Harlem
Globetrotters: Play
It Forward
Season 3 Episode 1

GROUP TRIPS

True Essence Sliders | DWD | Get In Where
You Fit In | STL Flava | NE Soul | TCH



BUILDING AWARENESS

MDHA PARTNERSHIP

Vine Hill Towers |
Hadley Park
Towers | Edge
Field Towers |
Parthenon Towers
| Madison Towers
| Barret Manor



LOCAL PERFORMANCES



BUILDING AWARENESS

GIVING BACK

Back-to-School Drive (264 Backpacks) | Holiday Gift Drive
Drive (26 Foster Children) | Food Drive | Breast Cancer |
Domestic Violence | Veterans Breakfast



17.5% of Total
Revenue

IMPACTFUL PROGRAMMING

MOVE WITH COOP

Line Dance Karokee, Games, Snacks, Fans, & Fun



STEP LYTE W/ BRYCE

WWW.615SOULLINEDANCE.COM

Step Lyte with Bryce

SOUL LINE DANCING

HARTMAN PARK COMMUNITY CENTER
2801 Tucker Road
Nashville, TN 37218

Free

DATE
MONDAYS & WEDNESDAYS

TIME
6:00 - 8:00PM

MORE INFO:
615-862-8479

JOIN US!

615 Soul Line Dancers



It You Got It, Say HEY!!

IMPACTFUL PROGRAMMING

HEALTH & WELLNESS POP-UP SERIES

Financial Literacy | Mental Wellness |
Breast Cancer : Early Detection | Healthy
Eating | Workforce Development



Health & Wellness Pop-Up Series

August - December

MORE INFORMATION COMING SOON AT
WWW.615SOULLINEDANCE.ORG / 615-933-3566

FREE TO THE PUBLIC

LIMITED SPACE AVAILABLE



FUN ACTIVITIES

Boxing | Belly Dancing |
Pilates | Cardio Fitness | T-
Shirt Cutting | Headshots

GUEST INSTRUCTORS

Jerome Bentley | Janean
Morris | Donald Jones |
DeMeria SeGuan

IMPACTFUL PROGRAMMING

NASHVEGAS NIGHTS



250 Guests
from across the country



FINANCIAL STATEMENTS

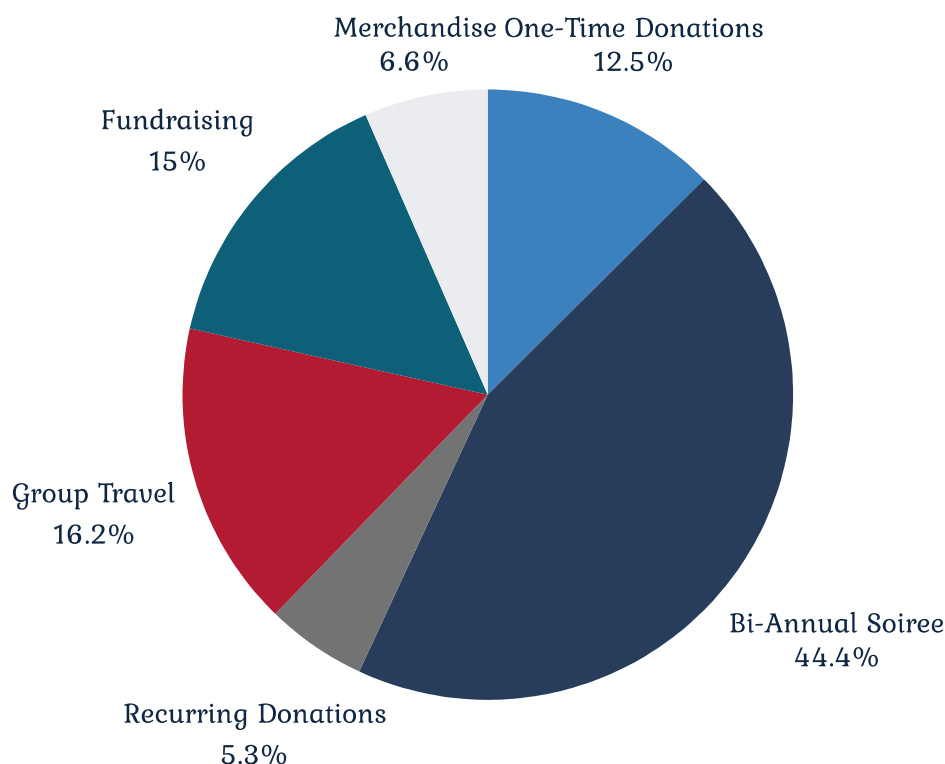
AT A GLANCE

For the year ended December 1, 2024

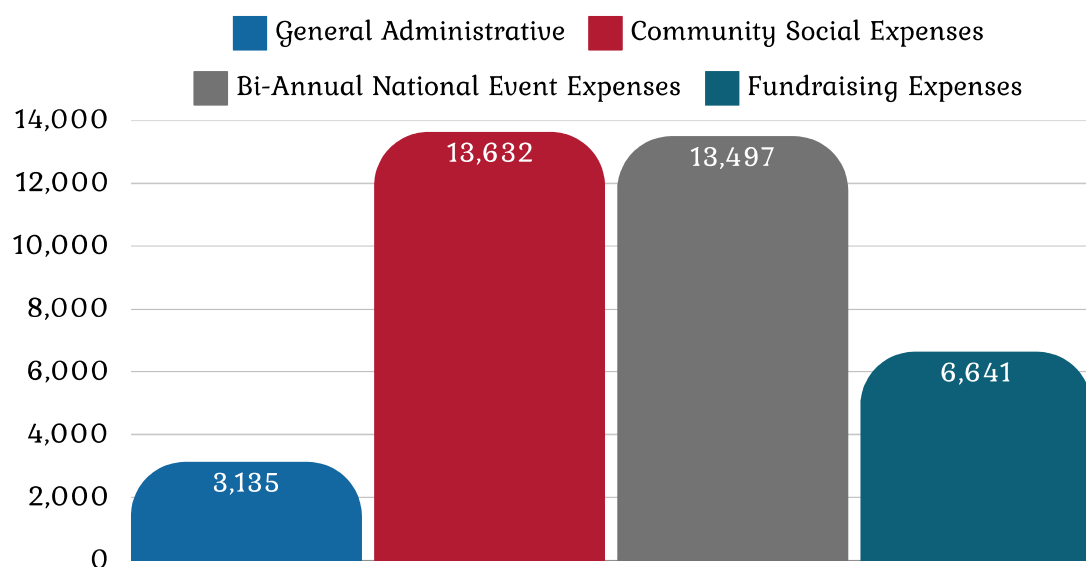
PROFIT & LOSS STATEMENT

Revenue	\$32.9K	\$32.8K
Expenses	\$36.9K	\$39.9K
Net Profit	\$966	(\$7K)

TOTAL REVENUE



TOTAL EXPENSES



FINANCIAL STATEMENTS

PROFIT & LOSS STATEMENT

For the year ended December 1, 2024

	2023	2024	2024 Overall Budget	YoY	VTB	2024 % of Total Revenue
Revenue						
One-Time Donations						
One-Time Donations	2,057	4,746	2,500	2,689	2,246	12.5%
Bi-Annual Soiree						
NashVegas Nights 2024	30,454	5,309	7,250	(25,146)	(1,941)	14.0%
NashVegas Nights 2026	0	11,504	0	11,504	11,504	30.4%
Total One-Time Donations	32,511	21,558	9,750	(10,953)	11,808	56.9%
Recurring Donations	1,495	2,020	13,674	525	(11,654)	5.3%
Grants	0	0	0	0	0	0.0%
Group Travel	0	6,148	3,576	6,148	2,572	16.2%
Other Gifts	5	0	0	(5)	0	0.0%
Fundraising						
615 Soul Bowling Fundraiser	497	0	0	(497)	0	0.0%
Holiday Gift Drive	1,751	3,650	3,000	1,899	650	9.6%
Food Bank Donation	50	125	900	75	(775)	0.3%
Back-To-School Drive	542	1,544	1,200	1,002	344	4.1%
Breast Cancer Awareness Month	50	145	350	95	(205)	0.4%
Combs for Combs	25	0	0	(25)	0	0.0%
Domestic Violence Awareness Month	300	125	350	(175)	(225)	0.3%
Autism Awareness	0	75	0	75	75	0.2%
Merchandise Revenue	13	2,482	0	2,469	2,482	6.6%
Total Revenue	37,240	37,872	32,800	633	5,072	100.0%

FINANCIAL STATEMENTS

PROFIT & LOSS STATEMENT cont.

For the year ended December 1, 2024

	2023	2024	2024 Overall Budget	YoY	VTB	2024 % of Total Revenue
Operating Expenses						
General Administrative Expenses						
Accounting Services	0	115	0	115	115	0.3%
Advertising & Marketing Expenses (6010)	425	1,973	612	1,548	1,361	5.2%
Bank Fees	185	439	794	254	(355)	1.2%
Filing Fees	0	175	100	175	75	0.5%
Other General Expenses	0	3	500	3	(497)	0.0%
Software Expenses (6040)	372	429	374	57	55	1.1%
Total General Administrative Expenses	982	3,135	2,380	2,153	755	8.3%
Community Social Expenses						
Advertising & Marketing Expenses (6110)	233	727	950	494	(223)	1.9%
Apparel Expenses	378	2,099	900	1,721	1,199	5.5%
Group Travel Expense	434	8,395	16,332	7,960	(7,937)	22.2%
Health & Wellness Pop-Up Series	0	1,402	0	1,402	1,402	3.7%
Other Community Social Expenses	276	646	2,500	370	(1,854)	1.7%
Rental Expense	481	182	182	(299)	0	0.5%
Software Expenses (6150)	136	181	0	46	181	0.5%
Total Community Social Expenses	1,939	13,632	20,864	11,693	(7,232)	36.0%
Bi-Annual National Event Expenses						
Advertising & Marketing Expenses (6210)	259	387	0	128	387	1.0%
Bi-Annual National Event Bank Fees	826	335	64	(492)	271	0.9%
Music Equipment Rental	0	722	0	722	722	1.9%
Decorations	1,233	2,334	2,382	1,102	(48)	6.2%
Food and Beverage	17,290	6,228	4,646	(11,062)	1,582	16.4%
General Liability Insurance	0	176	0	176	176	0.5%
Gifts	0	2,538	2,898	2,538	(360)	6.7%
T-Shirts	3,066	777	820	(2,289)	(43)	2.1%
Wristbands	131	0	0	(131)	0	0.0%
Total Bi-Annual National Event Expenses	22,805	13,497	10,810	(9,308)	2,687	35.6%
Fundraising Expenses						
Fundraising Expenses	324	0	0	(324)	0	0.0%
Holiday Gift Drive	1,761	3,559	3,000	1,797	559	9.4%
Food Bank Donation	52	50	900	(2)	(850)	0.1%
Back-To-School Drive	612	2,779	1,200	2,167	1,579	7.3%
Breast Cancer Awareness Month	0	125	350	125	(225)	0.3%
Combs for Combs	32	0	0	(32)	0	0.0%
Domestic Violence Awareness Month	309	129	350	(180)	(221)	0.3%
Total Fundraising Expenses	3,089	6,641	5,800	3,552	841	17.5%
Total Operating Expenses	28,815	36,906	39,854	8,091	(2,948)	97.4%
Net Profit	8,424	966	(7,054)	(7,458)	8,020	2.6%

FINANCIAL STATEMENTS

BALANCE SHEET

For the year ended December 1, 2024

Account	Dec 31, 2024	Dec 31, 2023
Assets		
Current Assets		
Cash and Cash Equivalents	11,340	8,425
Total Current Assets	11,340	8,425
Total Assets	11,340	8,425
Liabilities and Equity		
Equity		
Current Year Earnings	966	8,425
Retained Earnings	10,373	0
Total Equity	11,340	8,425
Total Liabilities and Equity	11,340	8,425



LOOKING AHEAD



EXPANSION

MORE INSTRUCTORS, MORE CLASSES

TUESDAY NIGHTS

KICKING IT
with **KAY**

JOIN US!

7PM - 8:45PM

FREE!

615 SOUL Line Dancers

www.615SoulLineDance.org

This graphic features a woman in a white dress on the left and a group of people dancing in the background. The text is overlaid on a purple and white background.

SOUL Line Dancing
W/ R&R
BEGINNER THURSDAYS

6:00PM - 7:00PM
MADISON LIBRARY
610 Gallatin Pike S, Madison, TN 37115

FREE

615 SOUL Line Dancers

This graphic features a woman in a colorful top on the right and a group of people dancing in the background. The text is overlaid on a purple and white background.

Interested in
being a 615
Soul Instructor
in your area?

EMAIL US!

NEW PARTNERSHIPS

CONSISTENCY

TRANSPARENT TIMELINE OF EVENTS

Sharing Our Plans for the Entire Year



615 Soul Line Dance

TIMELINE OF EVENTS

Q1

Jan-Mar

Annual Meeting (Jan)
NashVegas Nights
(February - Bi-Annual)
Road to 501(c)(3) Status
(Mar-Apr)

Q2

Apr - Jun

Season of Giving (Apr-Jun)
Spring Masquerade Gala*
(May)
Back-to-School Drive (Jun-Jul)

Q3

Jul - Sep

Back-to-School Drive (Jun-Jul)
Season of Wellness (Aug-Sep)

Oct - Dec

Q4

Season of Wellness (Oct-Dec)
Holiday Heroes (Oct-Dec)
Breast Cancer/Domestic Violence
Donation (Oct)
Food Bank Donation (Nov)

The 615 Soul Line Dance Timeline of Events serves as a purposeful guide to foster consistency and community engagement.

Through our Season of Giving, you can pledge your support and donate against that pledge throughout the year, directly supporting our programming and fundraising initiatives outlined in the timeline. Complementing this is our Season of Wellness, which features our Health & Wellness Pop-Up Series. Furthermore, our fundraising initiatives form the backbone of 615 Soul and are represented throughout the year.

Collectively, this Timeline of Events embodies our commitment to giving back and promoting holistic well-being.

COMMITMENT

We are committed to our purpose and mission.
We hold ourselves accountable to our donors,
community, programs, bylaws, and budget.
We are committed to being a Hands-to-Hands
nonprofit organization looking to make a local
impact.

**Will you join our
commitment by making
a pledge?**

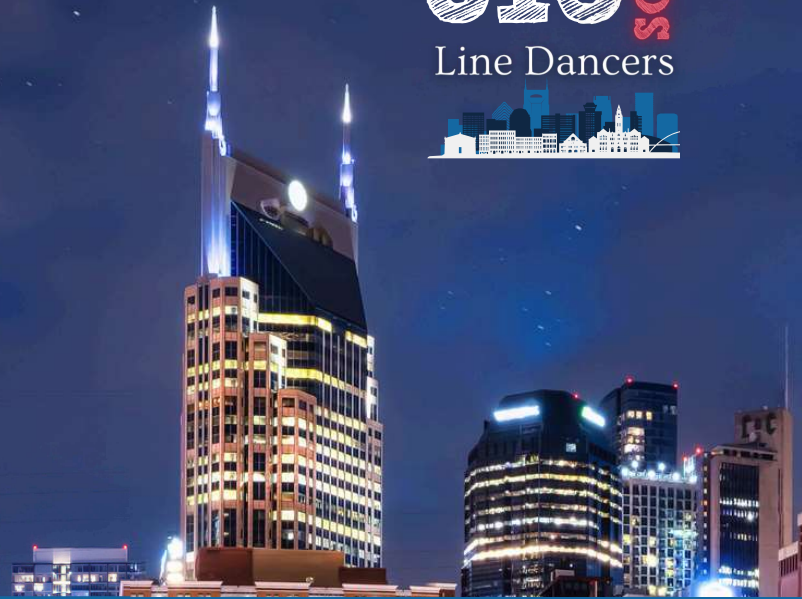
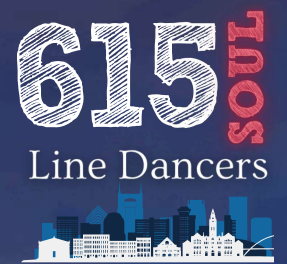


A promise to give a certain
amount at a specific amount
of time (monthly, quarterly,
bi-annually, annually)

GOAL: \$31,250

100 people pledging \$312.50 (ONLY \$26 a
month/Less than \$1 a day) for the year!

TEXT “I Pledge” to 615-933-3566



Moving with Intent

Expansion. Consistency. Commitment

www.615SoulLineDance.org

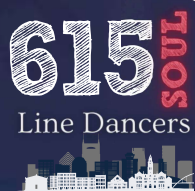
2025 BUDGET

For the year ending December 31, 2025

Account	2025 Overall Budget	% of Revenue
Revenue		
One-Time Donations		
Grants	10,500	9.3%
Bi-Annual Soiree	71,360	63.1%
Total One-Time Donations	81,860	72.4%
Pledges	31,250	27.6%
Total Revenue	113,110	100.0%
Gross Profit	113,110	100.0%
Operating Expenses		
General Administrative Expenses		
Accounting Services	120	0.1%
Advertising & Marketing Expenses (6010)	756	0.7%
Bank Fees	1,045	0.9%
Filing Fees	175	0.2%
Other General Expenses	500	0.4%
Software Expenses (6040)	432	0.4%
Total General Administrative Expenses	3,028	2.7%
Community Social Expenses		
Advertising & Marketing Expenses (6110)	880	0.8%
Apparel Expenses	1,500	1.3%
Group Travel Expense	7,600	6.7%
Health & Wellness Pop-Up Series	4,000	3.5%
Rental Expense	200	0.2%
Software Expenses (6150)	380	0.3%
Total Community Social Expenses	14,560	12.9%
Bi-Annual National Event Expenses		
Total Bi-Annual National Event Expenses	69,532	61.5%
Fundraising Expenses		
Holiday Gift Drive	6,000	5.3%
Food Bank Donation	150	0.1%
Back-To-School Drive	7,800	6.9%
Breast Cancer Awareness Month	350	0.3%
Domestic Violence Awareness Month	350	0.3%
Total Fundraising Expenses	14,650	13.0%
Total Operating Expenses	101,770	90.0%
Net Profit	11,340	10.0%

Year-Over-Year Changes

- NashVegas Nights Registration will run in 2025
- 615 Soul will manage NashVegas Lodging for an increase of \$30K to the budget **saving guests \$30 night.**
- Season of Wellness is included in the budget.
- Reduced Group Travel
- Increase in fundraising:
 - Back-to-School Drive: 264 backpacks to **600** backpacks
 - Holiday Heroes: 20 children to 30 children @\$200 per child



CONTACT US



615 SOUL LINE DANCE

 (615) 933-3566

 615SoulLineDance@gmail.com

 www.615SoulLineDance.com

www.615SoulLineDance.org