



# ENERGY STATEMENT

www.pge.com/MyEnergy

Account No: 8862032309-2  
Statement Date: 11/15/2019  
Due Date: 12/02/2019

## Service For:

BREESE 2 WATER ASSOCIATION  
Please see details page.

## Questions about your bill?

Business Specialist available:  
Mon-Fri: 7am to 6pm  
1-800-468-4743  
www.pge.com/MyEnergy

## Ways To Pay

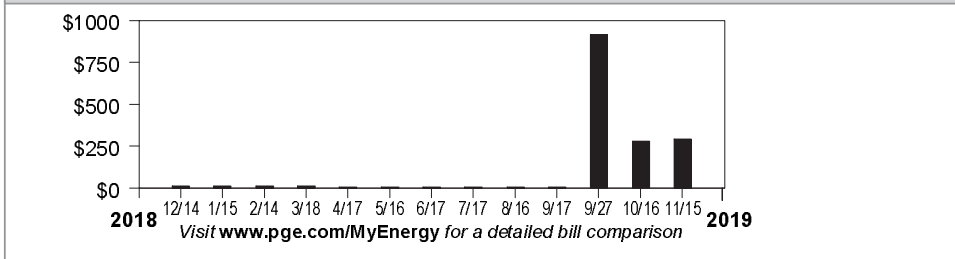
www.pge.com/waystopay

## Your Account Summary

Amount Due on Previous Statement	\$279.38
Payment(s) Received Since Last Statement	-279.38
Previous Unpaid Balance	\$0.00
Current Electric Charges	\$295.86
Electric Adjustments	-250.00

**Total Amount Due by 12/02/2019 \$45.86**

## Electric Monthly Billing History



## Important Messages

**Streetlight rate adjustments** If there have been streetlight installs, removals or modifications in your area during your billing cycle, the total amount billed will include prorated charges based on these adjustments. If you have any questions or would like more information regarding your streetlight bill, please call 1-800-743-5000.

Please return this portion with your payment. No staples or paper clips. Do not fold. Thank you.

99908862032309200000295860000004586



Account Number: 8862032309-2    Due Date: 12/02/2019    Total Amount Due: \$45.86

Amount Enclosed:  
\$ [ ] [ ] [ ] [ ] [ ] [ ] [ ] [ ] [ ] [ ]

BREESE 2 WATER ASSOCIATION  
PO BOX 9062  
RED BLUFF, CA 96080-1662

PG&E  
BOX 997300  
SACRAMENTO, CA 95899-7300



# ENERGY STATEMENT

www.pge.com/MyEnergy

Account No: 8862032309-2  
Statement Date: 11/15/2019  
Due Date: 12/02/2019

## Important Phone Numbers - Monday-Friday 7 a.m.-9 p.m., Saturday 8 a.m.-6 p.m.

### Customer Service (All Languages; Relay Calls Accepted) 1-800-743-5000

#### TTY 7-1-1

Servicio al Cliente en Español (Spanish) 1-800-660-6789  
華語客戶服務 (Chinese) 1-800-893-9555

Dịch vụ khách tiếng Việt (Vietnamese) 1-800-298-8438  
Business Customer Service 1-800-468-4743

#### Rules and rates

You may be eligible for a lower rate. Find out about optional rates or view a complete list of rules and rates, visit [www.pge.com](http://www.pge.com) or call 1-800-743-5000.

If you believe there is an error on your bill, please call 1-800-743-5000 to speak with a representative. If you are not satisfied with our response, contact the California Public Utilities Commission (CPUC), Consumer Affairs Branch (CAB), 505 Van Ness Avenue, Room 2003, San Francisco, CA 94102, 1-800-649-7570 or 7-1-1 (8:30 AM to 4:30 PM, Monday through Friday) or by visiting [www.cpuc.ca.gov/complaints/](http://www.cpuc.ca.gov/complaints/).

To avoid having service turned off while you wait for the outcome of a complaint to the CPUC specifically regarding the accuracy of your bill, please contact CAB for assistance. If your case meets the eligibility criteria, CAB will provide you with instructions on how to mail a check or money order to be impounded pending resolution of your case. You must continue to pay your current charges while your complaint is under review to keep your service turned on.

If you are not able to pay your bill, call PG&E to discuss how we can help. You may qualify for reduced rates under PG&E's CARE program or other special programs and agencies may be available to assist you. You may qualify for PG&E's Energy Savings Assistance Program which is an energy efficiency program for income-qualified residential customers.

#### Important definitions

**Rotating outage blocks** are subject to change without advance notice due to operational conditions.

**Demand charge:** Many non-residential rates include a demand charge. Demand is a measurement of the highest usage of electricity in any single fifteen (or sometimes five) minute period during a monthly billing cycle. Demand is measured in kilowatts (or kW). High demand is usually associated with equipment start-up. By spreading equipment start-ups over a longer period of time, you may be able to lower demand and reduce your demand charges.

**Time-of-use electric** prices are higher every day during afternoons and evenings, and lower at other times of the day. Prices also change by season, with higher prices in the summer and lower prices in the winter.

**DWR bond charge:** Recovers the cost of bonds issued by the Department of Water Resources (DWR) to purchase power to serve electric customers during the California energy crisis. DWR bond charges are collected on behalf of DWR and do not belong to PG&E.

**Power Charge Indifference Adjustment (PCIA):** Ensures that non-exempt customers under PG&E's GT and ECR rate schedules or who purchase electricity (generation) from non-PG&E suppliers pay their share of generation costs.

**Gas Public Purpose Program (PPP) Surcharge.** Used to fund state-mandated gas assistance programs for low-income customers, energy efficiency programs, and public-interest research and development.

Visit [www.pge.com/billexplanation](http://www.pge.com/billexplanation) for more definitions. To view most recent bill inserts including legal or mandated notices, visit [www.pge.com/billinserts](http://www.pge.com/billinserts).

#### Your Electric Charges Breakdown

Generation	\$124.28
Transmission	29.72
Distribution	119.89
Electric Public Purpose Programs	14.52
Nuclear Decommissioning	0.99
DWR Bond Charge	5.59
Competition Transition Charges (CTC)	1.19
Energy Cost Recovery Amount	-0.65
Taxes and Other	0.33
<b>Total Electric Charges</b>	<b>\$295.86</b>

"PG&E" refers to Pacific Gas and Electric Company, a subsidiary of PG&E Corporation. © 2019 Pacific Gas and Electric Company. All rights reserved.

Please do not mark in box. For system use only.

#### Update My Information (English Only)

Please allow 1-2 billing cycles for changes to take effect

**Account Number: 8862032309-2**

Change my mailing address to: \_\_\_\_\_

City \_\_\_\_\_ State \_\_\_\_\_ ZIP code \_\_\_\_\_

Primary Phone # \_\_\_\_\_ Primary Email \_\_\_\_\_

#### Ways To Pay

- **Online via web or mobile at [www.pge.com/waystopay](http://www.pge.com/waystopay)**
- **By mail:** Send your payment along with this payment stub in the envelope provided.
- **By debit card, Visa, MasterCard, American Express, or Discover:** Call 877-704-8470 at any time. (Our independent service provider charges a fee per transaction.)
- **At a PG&E payment center or local office:** To find a payment center or local office near you, please visit [www.pge.com](http://www.pge.com) or call 800-743-5000. Please bring a copy of your bill with you.



# ENERGY STATEMENT

www.pge.com/MyEnergy

Account No: 8862032309-2  
Statement Date: 11/15/2019  
Due Date: 12/02/2019

## Details of Electric Charges

10/16/2019 - 11/14/2019 (30 billing days)

Service For: GURNSEY AVE E .1 MI  
Service Agreement ID: 8862957046  
Rate Schedule: A1X Small General Time-of-Use Service

### 10/16/2019 – 10/31/2019

Customer Charge	16 days @ \$0.65708	\$10.51
Energy Charges		
Peak	125.038000 kWh @ \$0.28713	35.90
Part Peak	119.636500 kWh @ \$0.26348	31.52
Off Peak	328.458000 kWh @ \$0.23612	77.56
Energy Commission Tax		0.17

### 11/01/2019 – 11/14/2019

Customer Charge	14 days @ \$0.82136	\$11.50
Energy Charges		
Part Peak	166.891000 kWh @ \$0.24134	40.28
Off Peak	352.041000 kWh @ \$0.22043	77.60
Energy Commission Tax		0.16

**Total Electric Charges \$285.20**

### Average Daily Usage (kWh / day)

Last Year	Last Period	Current Period
N/A	34.93	36.40

## Adjustments

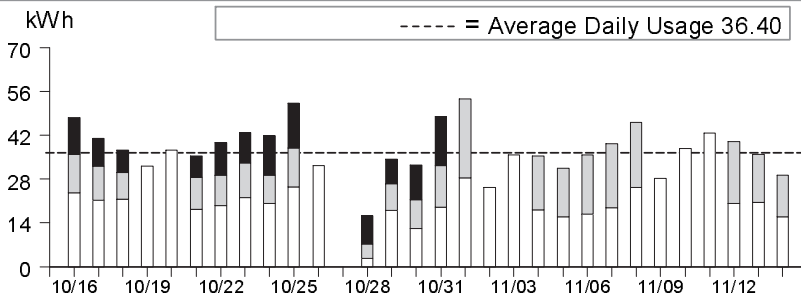
Customer Satisfaction Adjustment -\$250.00

**Total Adjustments -\$250.00**

## Service Information

Meter # 1005834311  
Total Usage 1,092.064500 kWh  
Serial T  
Rotating Outage Block 50

## Electric Usage This Period: 1,092.064500 kWh, 30 billing days



	Usage	Energy Charges
Peak <sup>1</sup>	11.44%	\$35.90
Part Peak <sup>2</sup>	26.25%	\$71.80
Off Peak <sup>3</sup>	62.31%	\$155.16

<sup>1</sup>Peak: 5/1-10/31 12:00pm-6:00pm, M-F (except Holidays);  
<sup>2</sup>Part Peak: 5/1-10/31 8:30am-12:00pm, 6:00pm-9:30pm, M-F (except Holidays); 11/1-4/30 8:30am-9:30pm, M-F (except Holidays);  
<sup>3</sup>Off Peak: Year Round 9:30pm - 8:30am, M-F (except Holidays); Sat-Sun; Holidays



# ENERGY STATEMENT

www.pge.com/MyEnergy

Account No: 8862032309-2  
Statement Date: 11/15/2019  
Due Date: 12/02/2019

## Details of Electric Charges

10/17/2019 - 11/15/2019 (30 billing days)

Service For: 115 GURNSEY AVE  
Service Agreement ID: 8862032165  
Rate Schedule: LS1-A PG&E-Owned Street and Highway Lighting

### 10/17/2019 – 10/31/2019

Charges - per lamp per month <sup>1</sup>  
PGEC LED 060.01 to 065.00 Watt (15 days)                      1 Lamps @ \$10.66200                      \$5.33

### 11/01/2019 – 11/15/2019

Charges - per lamp per month <sup>1</sup>  
PGEC LED 060.01 to 065.00 Watt (15 days)                      1 Lamps @ \$10.66200                      \$5.33

---

**Total Electric Charges** **\$10.66**

<sup>1</sup> Lamp charges are prorated for the number of days in each month

### Average Daily Usage (kWh / day)

Last Year	Last Period	Current Period
2.70	0.71	0.71