

**Service For:**

BREESE 2 WATER ASSOCIATION  
Please see details page.

**Questions about your bill?**

Business Specialist available:  
Mon-Fri: 7am to 6pm  
1-800-468-4743  
www.pge.com/MyEnergy

**Ways To Pay**

www.pge.com/waystopay

**Your Enrolled Programs**

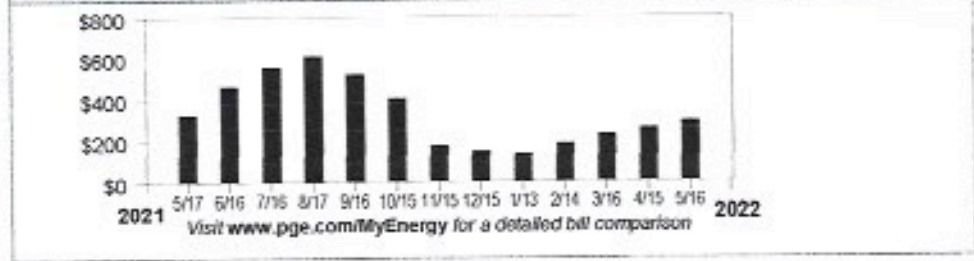
Peak Day Pricing Plan

**Your Account Summary**

Amount Due on Previous Statement	\$245.05
Payment(s) Received Since Last Statement	-245.05
Previous Unpaid Balance	\$0.00
Current Electric Charges	\$291.56

<b>Total Amount Due by 06/02/2022</b>	<b>\$291.56</b>
---------------------------------------	-----------------

**Electric Monthly Billing History**



**Important Messages**

The CPUC Mandated Electric Credit you received in your April bill was a One-Time Customer Credit per the Decision on the Order to Show Cause regarding Pacific Gas and Electric Company's implementation of the Fall 2019 Public Safety Power Shutoff Events.

**Streetlight rate adjustments:** If there have been streetlight installs, removals or modifications in your area during your billing cycle, the total amount billed will include prorated charges based on these adjustments. If you have any questions or would like more information regarding your streetlight bill, please call 1-800-743-5000.

Please return this portion with your payment. No staples or paper clips. Do not fold. Thank you.

99908862032309200000291560000029156



Account Number: <b>8862032309-2</b>	Due Date: <b>06/02/2022</b>	Total Amount Due: <b>\$291.56</b>	Amount Enclosed: \$
--	--------------------------------	--------------------------------------	------------------------

BREESE 2 WATER ASSOCIATION  
PO BOX 9062  
RED BLUFF, CA 96080-1062

PG&E  
BOX 997300  
SACRAMENTO, CA 95899-7300

## Details of Electric Charges

04/15/2022 - 05/15/2022 (31 billing days)

Service For: GURNSEY AVE E .1 MI  
 Service Agreement ID: 8862957046  
 Rate Schedule: B1 Bus Low Use  
 Enrolled Programs: Peak Day Pricing Plan

**Service Information**  
 Meter # 1005834311  
 Total Usage 861.697000 kWh  
 Serial T  
 Rotating Outage Block 50

**Additional Messages**  
 From March 1, 2022 to February 28, 2023, the Wildfire Fund Charge is offset by \$0.00109/kWh to reflect excess funds from the Department of Water Resources (DWR) Bond charge. The Wildfire Fund Charge is also offset by an additional \$0.00084/kWh during this same period for excess funds from the DWR Power charge. These charges were included in your electric charges prior to 2021 and were related to bonds issued and energy provided to customers by DWR during the 2000-2001 California energy crisis.

**04/15/2022 - 05/15/2022**

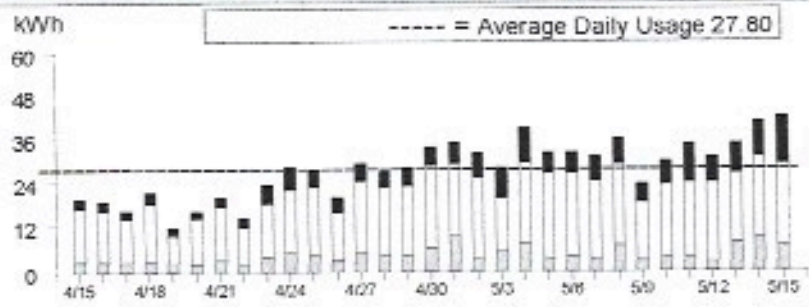
Customer Charge	31 days @ \$0.82136	\$25.46
<b>Energy Charges</b>		
Peak	182.218000 kWh @ \$0.31009	56.50
Off Peak	535.920000 kWh @ \$0.29397	157.54
Super Off Peak	143.559000 kWh @ \$0.27755	39.84
Energy Commission Tax		0.26

**Total Electric Charges \$279.60**

**Average Daily Usage (kWh / day)**

Last Year	Last Period	Current Period
38.77	24.98	27.80

**Electric Usage This Period: 861.697000 kWh, 31 billing days**



	Usage	Energy Charges
Peak <sup>1</sup>	21.14%	\$56.50
Part Peak <sup>2</sup>	0.00%	\$0.00
Off Peak <sup>3</sup>	62.19%	\$157.54
Super Off Peak <sup>4</sup>	16.67%	\$39.84

<sup>1</sup>Peak: Year-round, Daily, 4:00pm-9:00pm  
<sup>2</sup>Part Peak: Summer, 6/1-9/30, Daily, 2:00pm-4:00pm and 9:00pm-11:00pm  
<sup>3</sup>Off Peak: Summer, 6/1-9/30, Daily, 11:00pm-2:00pm  
 Winter, 10/1-2/28, Daily, 9:00pm-4:00pm  
 Winter, 3/1-5/31, Daily, 9:00pm-9:00am and 2:00pm-4:00pm  
<sup>4</sup>Super Off Peak: Winter, Daily, 3/1-5/31, 9:00am-2:00pm

**Details of Electric Charges**

04/16/2022 - 05/16/2022 (31 billing days)

Service For: 115 GURNSEY AVE  
 Service Agreement ID: 8862032165  
 Rate Schedule: LS1-A PG&E-Owned Street and Highway Lighting

**04/16/2022 – 04/30/2022**

Charges - per lamp per month <sup>1</sup>  
 PGEC LED 060.01 to 065.00 Watt (15 days) 1 Lamps @ \$11.96100 \$5.79

**05/01/2022 – 05/16/2022**

Charges - per lamp per month <sup>1</sup>  
 PGEC LED 060.01 to 065.00 Watt (16 days) 1 Lamps @ \$11.96100 \$6.17

**Total Electric Charges \$11.96**

<sup>1</sup> Lamp charges are prorated for the number of days in each month

**Average Daily Usage (kWh / day)**

Last Year	Last Period	Current Period
0.71	0.71	0.71

**Additional Messages**

From March 1, 2022 to February 28, 2023, the Wildfire Fund Charge is offset by \$0.00109/kWh to reflect excess funds from the Department of Water Resources (DWR) Bond charge. The Wildfire Fund Charge is also offset by an additional \$0.00084/kWh during this same period for excess funds from the DWR Power charge. These charges were included in your electric charges prior to 2021 and were related to bonds issued and energy provided to customers by DWR during the 2000-2001 California energy crisis.

**Your Electric Charges Breakdown (from page 2)**

Generation	\$120.78
Transmission	31.84
Distribution	120.00
Electric Public Purpose Programs	16.90
Nuclear Decommissioning	-0.11
Wildfire Fund Charge	4.06
Wildfire Hardening Charge	1.27
Competition Transition Charges (CTC)	0.19
Energy Cost Recovery Amount	-3.80
Taxes and Other	0.26
<b>Total Electric Charges</b>	<b>\$291.56</b>