

## Service For:

BREESE 2 WATER ASSOCIATION  
Please see details page.

## Questions about your bill?

Business Specialist available:  
Mon-Fri: 7am to 6pm  
1-800-468-4743  
www.pge.com/MyEnergy

## Ways To Pay

www.pge.com/waystopay

## Your Enrolled Programs

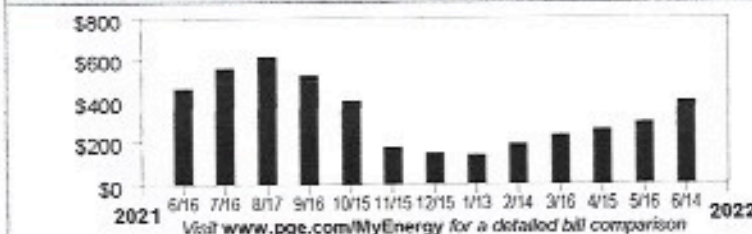
Peak Day Pricing Plan

## Your Account Summary

|  |          |
|--|----------|
| Amount Due on Previous Statement         | \$291.56 |
| Payment(s) Received Since Last Statement | -291.56  |
| Previous Unpaid Balance                  | \$0.00   |
| Current Electric Charges                 | \$400.95 |

**Total Amount Due by 07/01/2022 \$400.95**

## Electric Monthly Billing History



## Important Messages

**Streetlight rate adjustments** If there have been streetlight installs, removals or modifications in your area during your billing cycle, the total amount billed will include prorated charges based on these adjustments. If you have any questions or would like more information regarding your streetlight bill, please call 1-800-743-5000.

Please return this portion with your payment. No staples or paper clips. Do not fold. Thank you.

99908862032309200000400950000040095



Account Number: 8862032309-2 Due Date: 07/01/2022 Total Amount Due: \$400.95 Amount Enclosed: \$

BREESE 2 WATER ASSOCIATION  
PO BOX 9062  
RED BLUFF, CA 96080-1662

PG&E  
BOX 997300  
SACRAMENTO, CA 95899-7300

## Details of Electric Charges

05/16/2022 - 06/13/2022 (29 billing days)

Service For: GURNSEY AVE E .1 MI  
Service Agreement ID: 8862957046  
Rate Schedule: B1 Bus Low Use  
Enrolled Programs: Peak Day Pricing Plan

### 05/16/2022 - 05/31/2022

|                       |                            |         |
|-----------------------|----------------------------|---------|
| Customer Charge       | 16 days @ \$0.82136        | \$13.14 |
| Energy Charges        |                            |         |
| Peak                  | 160.278000 kWh @ \$0.31009 | 49.70   |
| Off Peak              | 393.058340 kWh @ \$0.29397 | 115.55  |
| Super Off Peak        | 97.327660 kWh @ \$0.27755  | 27.01   |
| Energy Commission Tax |                            | 0.20    |

### 06/01/2022 - 06/13/2022

|                         |                             |         |
|-------------------------|-----------------------------|---------|
| Customer Charge         | 13 days @ \$0.82136         | \$10.68 |
| Energy Charges          |                             |         |
| Peak                    | 118.378460 kWh @ \$0.38827  | 45.96   |
| Part Peak               | 67.968540 kWh @ \$0.33904   | 23.04   |
| Off Peak                | 332.125000 kWh @ \$0.31824  | 105.70  |
| PDP Program Details     |                             |         |
| Peak Usage Credits      | 118.378460 kWh @ -\$0.05667 | -6.71   |
| Part Peak Usage Credits | 67.968540 kWh @ -\$0.01683  | -1.14   |
| Event Day Charges       | 9.331000 kWh @ \$0.60000    | 5.60    |
| Energy Commission Tax   |                             | 0.16    |

**Total Electric Charges** **\$388.89**

Usage For This Period's Event Days (4PM to 9PM)

06/10/2022 9.331000 kWh

Average Daily Usage (kWh / day)

| Last Year | Last Period | Current Period |
|-----------|-------------|----------------|
| 54.12     | 27.80       | 40.32          |

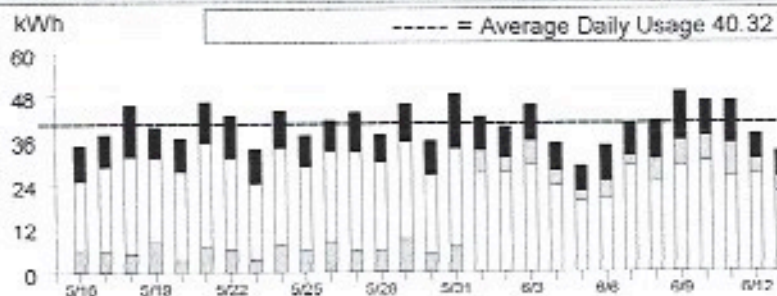
## Service Information

Meter # 1005834311  
Total Usage 1,169.136000 kWh  
Serial T  
Rotating Outage Block 50

## Additional Messages

From March 1, 2022 to February 28, 2023, the Wildfire Fund Charge is offset by \$0.00109/kWh to reflect excess funds from the Department of Water Resources (DWR) Bond charge. The Wildfire Fund Charge is also offset by an additional \$0.00084/kWh during this same period for excess funds from the DWR Power charge. These charges were included in your electric charges prior to 2021 and were related to bonds issued and energy provided to customers by DWR during the 2000-2001 California energy crisis.

## Electric Usage This Period: 1,169.136000 kWh, 29 billing days



|                             | Usage  | Energy Charges |
|-----------------------------|--------|----------------|
| Peak <sup>1</sup>           | 23.63% | \$95.66        |
| Part Peak <sup>2</sup>      | 5.63%  | \$23.04        |
| Off Peak <sup>3</sup>       | 62.02% | \$221.25       |
| Super Off Peak <sup>4</sup> | 8.32%  | \$27.01        |

<sup>1</sup>Peak: Year-round, Daily, 4:00pm-9:00pm

<sup>2</sup>Part Peak: Summer, 6/1-9/30, Daily, 2:00pm-4:00pm and 9:00pm-11:00pm

<sup>3</sup>Off Peak: Summer, 6/1-9/30, Daily, 11:00pm-2:00pm

Winter, 10/1-2/28, Daily, 9:00pm-4:00pm

Winter, 3/1-5/31, Daily, 9:00pm-9:00am and 2:00pm-4:00pm

<sup>4</sup>Super Off Peak: Winter, Daily, 3/1-5/31, 9:00am-2:00pm

## Details of Electric Charges

05/17/2022 - 06/14/2022 (29 billing days)

Service For: 115 GURNSEY AVE

Service Agreement ID: 8862032165

Rate Schedule: LS1-A PG&amp;E-Owned Street and Highway Lighting

### 05/17/2022 - 05/31/2022

Charges - per lamp per month <sup>1</sup>

|  |                      |        |
|--|----------------------|--------|
| PG&E LED 060.01 to 065.00 Watt (15 days) | 1 Lamps @ \$11.96100 | \$6.19 |
|--|----------------------|--------|

### 06/01/2022 - 06/14/2022

Charges - per lamp per month <sup>1</sup>

|  |                      |        |
|--|----------------------|--------|
| PG&E LED 060.01 to 065.00 Watt (14 days) | 1 Lamps @ \$12.15100 | \$5.87 |
|--|----------------------|--------|

**Total Electric Charges** **\$12.06**
<sup>1</sup> Lamp charges are prorated for the number of days in each month

### Average Daily Usage (kWh / day)

| Last Year | Last Period | Current Period |
|-----------|-------------|----------------|
| 0.71      | 0.71        | 0.71           |

## Additional Messages

From March 1, 2022 to February 28, 2023, the Wildfire Fund Charge is offset by \$0.00109/kWh to reflect excess funds from the Department of Water Resources (DWR) Bond charge. The Wildfire Fund Charge is also offset by an additional \$0.00084/kWh during this same period for excess funds from the DWR Power charge. These charges were included in your electric charges prior to 2021 and were related to bonds issued and energy provided to customers by DWR during the 2000-2001 California energy crisis.



**Your Electric Charges Breakdown (from page 2)**

|                                      |                 |
|--------------------------------------|-----------------|
| Generation                           | \$170.63        |
| Transmission                         | 42.93           |
| Distribution                         | 161.67          |
| Electric Public Purpose Programs     | 23.19           |
| Nuclear Decommissioning              | -0.15           |
| Wildfire Fund Charge                 | 5.46            |
| Recovery Bond Charge                 | 2.89            |
| Recovery Bond Credit                 | -2.89           |
| Wildfire Hardening Charge            | 1.71            |
| Competition Transition Charges (CTC) | 0.26            |
| Energy Cost Recovery Amount          | -5.11           |
| Taxes and Other                      | 0.36            |
| <b>Total Electric Charges</b>        | <b>\$400.95</b> |