



ENERGY STATEMENT

www.pge.com/MyEnergy

Account No: 8862032309-2
Statement Date: 10/14/2025
Due Date: 10/31/2025

Service For:

BREESE 2 WATER ASSOCIATION
Please see details page.

Questions about your bill?

Business Specialist available:
Mon-Fri: 7am to 6pm
1-800-468-4743
www.pge.com/MyEnergy

Ways To Pay

www.pge.com/waystopay

Your Enrolled Programs

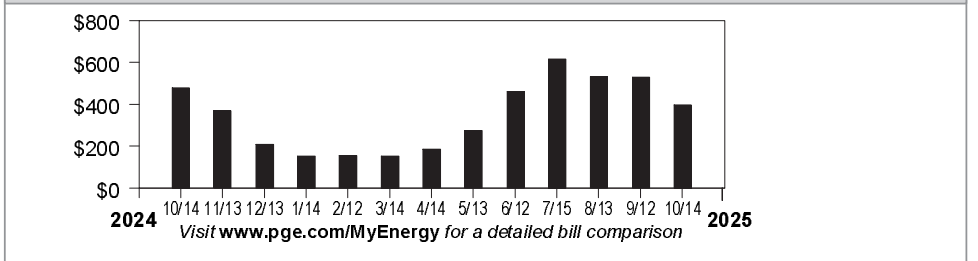
Peak Day Pricing Plan

Your Account Summary

Amount Due on Previous Statement	\$531.29
Payment(s) Received Since Last Statement	-531.29
Previous Unpaid Balance	\$0.00
Current Electric Charges	\$398.07
Electric Adjustments	-58.23

Total Amount Due by 10/31/2025 \$339.84

Electric Monthly Billing History



Important Messages

Streetlight rate adjustments If there have been streetlight installs, removals or modifications in your area during your billing cycle, the total amount billed will include prorated charges based on these adjustments. If you have any questions or would like more information regarding your streetlight bill, please call 1-800-743-5000.

Please return this portion with your payment. No staples or paper clips. Do not fold. Thank you.

99908862032309200000398070000033984



Account Number: **8862032309-2** Due Date: **10/31/2025** Total Amount Due: **\$339.84**

Amount Enclosed:

\$

BREESE 2 WATER ASSOCIATION
PO BOX 9062
RED BLUFF, CA 96080-1662

PG&E
BOX 997300
SACRAMENTO, CA 95899-7300



ENERGY STATEMENT

www.pge.com/MyEnergy

Account No: 8862032309-2
Statement Date: 10/14/2025
Due Date: 10/31/2025

Important Phone Numbers - Monday-Friday 7 a.m.-7 p.m., Saturday 8 a.m.-5 p.m.

Customer Service (All Languages; Relay Calls Accepted) 1-800-743-5000

TTY 7-1-1

Servicio al Cliente en Español (Spanish)	1-800-660-6789	Dịch vụ khách tiếng Việt (Vietnamese)	1-800-298-8438
華語客戶服務 (Chinese)	1-800-893-9555	Business Customer Service	1-800-468-4743

Rules and rates

You may be eligible for a lower rate. Find out about optional rates or view a complete list of rules and rates, visit www.pge.com or call 1-800-743-5000.

If you believe there is an error on your bill, please call 1-800-743-5000 to speak with a representative. If you are not satisfied with our response, contact the California Public Utilities Commission (CPUC), Consumer Affairs Branch (CAB), 505 Van Ness Avenue, Room 2003, San Francisco, CA 94102, 1-800-649-7570 or 7-1-1 (8:30 AM to 4:30 PM, Monday through Friday) or by visiting www.cpuc.ca.gov/complaints/.

To avoid having service turned off while you wait for the outcome of a complaint to the CPUC specifically regarding the accuracy of your bill, please contact CAB for assistance. If your case meets the eligibility criteria, CAB will provide you with instructions on how to mail a check or money order to be impounded pending resolution of your case. You must continue to pay your current charges while your complaint is under review to keep your service turned on.

If you are not able to pay your bill, call PG&E to discuss how we can help. You may qualify for reduced rates under PG&E's CARE program or other special programs and agencies may be available to assist you. You may qualify for PG&E's Energy Savings Assistance Program which is an energy efficiency program for income-qualified residential customers.

Important definitions

Rotating outage blocks are subject to change without advance notice due to operational conditions.

Demand charge: Many non-residential rates include a demand charge. Demand is a measurement of the highest usage of electricity in any single fifteen (or sometimes five) minute period during a monthly billing cycle. Demand is measured in kilowatts (or kW). High demand is usually associated with equipment start-up. By spreading equipment start-ups over a longer period of time, you may be able to lower demand and reduce your demand charges.

Time-of-use electric prices are higher every day during afternoons and evenings, and lower at other times of the day. Prices also change by season, with higher prices in the summer and lower prices in the winter.

Wildfire Fund Charge: Charge on behalf of the State of California Department of Water Resources (DWR) to fund the California Wildfire Fund. For usage prior to October 1, 2020, this charge included costs related to the 2001 California energy crisis, also collected on behalf of the DWR. These charges belong to DWR, not PG&E.

Power Charge Indifference Adjustment (PCIA): The PCIA is a charge to ensure that both PG&E customers and those who have left PG&E service to purchase electricity from other providers pay for the above market costs for electric generation resources that were procured by PG&E on their behalf. 'Above market' refers to the difference between what the utility pays for electric generation and current market prices for the sale of those resources. Visit www.pge.com/cca.

Wildfire Hardening Charge: PG&E has been permitted to issue bonds that enable it to recover more quickly certain costs related to preventing and mitigating catastrophic wildfires, while reducing the total cost to its customers. Your bill for electric service includes a fixed recovery charge called the Wildfire Hardening Charge that has been approved by the CPUC to repay those bonds. The right to recover the Wildfire Hardening Charge has been transferred to a separate entity (called the Special Purpose Entity) that issued the bonds and does not belong to PG&E. PG&E is collecting the Wildfire Hardening Charge on behalf of the Special Purpose Entity. For details visit: www.pge.com/tariffs/assets/pdf/tariffbook/ELEC_PRELIM_JF.pdf.

Recovery Bond Charge/Credit: Your bill for electric service includes a charge that has been approved by the CPUC to repay bonds issued for certain costs related to catastrophic wildfires. The Recovery Bond Charge (RBC) rate is currently \$0.00778 per kWh. PG&E has also contributed certain amounts to a trust fund which is used to provide a customer credit equal to \$0.00778 per kWh (Recovery Bond Credit). The right to recover the RBC has been transferred to one or more Special Purpose Entities that issued the bonds and does not belong to PG&E. PG&E is collecting that portion of the RBC on behalf of the Special Purpose Entities.

Gas Public Purpose Program (PPP) Surcharge. Used to fund state-mandated gas assistance programs for low-income customers, energy efficiency programs, and public-interest research and development.

Visit www.pge.com/billexplanation for more definitions. To view most recent bill inserts including legal or mandated notices, visit www.pge.com/billinserts.

See the table reflecting "Your Electric Charges Breakdown" on the last page

"PG&E" refers to Pacific Gas and Electric Company, a subsidiary of PG&E Corporation. © 2025 Pacific Gas and Electric Company. All rights reserved.

Please do not mark in box. For system use only.

Update My Information (English Only) Ways To Pay

Please allow 1-2 billing cycles for changes to take effect

Account Number: 8862032309-2

Change my mailing address to: _____

City _____ State _____ ZIP code _____

Primary Phone # _____ Primary Email _____

- **Online via web or mobile at www.pge.com/waystopay**
- **By mail:** Send your payment along with this payment stub in the envelope provided.
- **By debit card, Visa, MasterCard, American Express, or Discover:** Call 877-704-8470 at any time. (Our independent service provider charges a fee per transaction.)
- **At a neighborhood payment center:** To find a neighborhood payment center near you, please visit www.pge.com or call 800-743-5000. Please bring a copy of your bill with you.



ENERGY STATEMENT

www.pge.com/MyEnergy

Account No: 8862032309-2
Statement Date: 10/14/2025
Due Date: 10/31/2025

Details of Electric Charges

09/12/2025 - 10/13/2025 (32 billing days)

Service For: GURNSEY AVE E .1 MI
Service Agreement ID: 8862957046
Rate Schedule: B1 Bus Low Use
Enrolled Programs: Peak Day Pricing Plan

09/12/2025 – 09/30/2025

Customer Charge	19 days @ \$0.82136	\$15.61
Energy Charges		
Peak	108.094000 kWh @ \$0.50050	54.10
Part Peak	78.721000 kWh @ \$0.45127	35.52
Off Peak	386.396500 kWh @ \$0.43046	166.33
PDP Program Details		
Peak Usage Credits	108.094000 kWh @ -\$0.05986	-6.47
Part Peak Usage Credits	78.721000 kWh @ -\$0.01778	-1.40
Event Day Charges	15.595000 kWh @ \$0.60000	9.36
Energy Commission Tax		0.17

10/01/2025 – 10/13/2025

Customer Charge	13 days @ \$0.82136	\$10.68
Energy Charges		
Peak	50.581000 kWh @ \$0.42508	21.50
Off Peak	190.905000 kWh @ \$0.40896	78.07
Energy Commission Tax		0.07

Total Electric Charges \$383.54

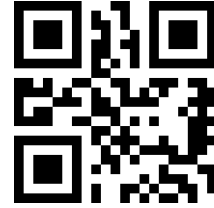
Usage For This Period's Event Days (4PM to 9PM)

09/16/2025	4.937000 kWh	09/23/2025	5.332000 kWh Est.
09/17/2025	5.326000 kWh		

Average Daily Usage (kWh / day)

Last Year	Last Period	Current Period
34.51	36.23	25.46

Rate Identification Number



USCA-PGPG-0612-0000

www.pge.com/rin

To program your smart device, scan the QR code or enter the RIN code above and follow the on-screen instructions.

Service Information

Meter #	1005834311
Total Usage	814.697500 kWh
Serial	T
Rotating Outage Block	50

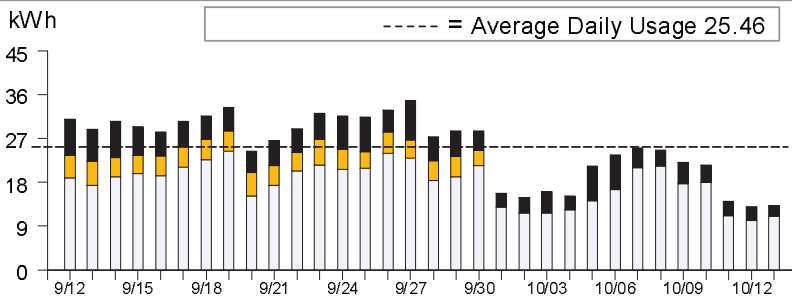
Additional Messages

Peak Day Pricing event includes estimated usage This bill includes estimated usage from a Peak Day Pricing (PDP) event. As a result, usage for the day was billed at the lowest possible price.

CA Climate Credit -

You received a Climate Credit on this month's electric bill. For more information about this California Climate Credit, visit www.cpuc.ca.gov/smallbusinessclimatecredit

Electric Usage This Period: 814.697500 kWh, 32 billing days



	Usage	Energy Charges
Peak ¹	19.47%	\$75.60
Part Peak ²	9.67%	\$35.52
Off Peak ³	70.86%	\$244.40
Super Off Peak ⁴	0.00%	\$0.00

¹Peak: Year-round, Daily, 4:00pm-9:00pm

²Part Peak: Summer, 6/1-9/30, Daily, 2:00pm-4:00pm and 9:00pm-11:00pm

³Off Peak: Summer, 6/1-9/30, Daily, 11:00pm-2:00pm
Winter, 10/1-2/28, Daily, 9:00pm-4:00pm

Winter, 3/1-5/31, Daily, 9:00pm-9:00am and 2:00pm-4:00pm

⁴Super Off Peak: Winter, Daily, 3/1-5/31, 9:00am-2:00pm



ENERGY STATEMENT

www.pge.com/MyEnergy

Account No: 8862032309-2
Statement Date: 10/14/2025
Due Date: 10/31/2025

Details of Electric Charges (continued)

Service For: GURNSEY AVE E .1 MI

Service Agreement ID: 8862957046

Adjustments

CA Climate Credit -\$58.23

Total Adjustments -\$58.23



ENERGY STATEMENT

www.pge.com/MyEnergy

Account No: 8862032309-2
Statement Date: 10/14/2025
Due Date: 10/31/2025

Details of Electric Charges

09/13/2025 - 10/14/2025 (32 billing days)

Service For: 115 GURNSEY AVE

Service Agreement ID: 8862032165

Rate Schedule: LS1-A PG&E-Owned Street and Highway Lighting

09/13/2025 – 10/14/2025

Charges - per lamp per month ¹

PGEC LED 060.01 to 065.00 Watt 1 Lamps @ \$14.51800 \$14.52

Energy Commission Tax 0.01

Total Electric Charges \$14.53

¹ Lamp charges are prorated for the number of days in each month

Average Daily Usage (kWh / day)

Last Year	Last Period	Current Period
0.71	0.71	0.71



ENERGY STATEMENT

www.pge.com/MyEnergy

Account No: 8862032309-2
Statement Date: 10/14/2025
Due Date: 10/31/2025

Your Electric Charges Breakdown (from page 2)

Generation	\$130.19
Transmission	23.64
Distribution	215.80
Electric Public Purpose Programs	21.01
Nuclear Decommissioning	-0.21
Wildfire Fund Charge	4.99
Recovery Bond Charge	6.52
Recovery Bond Credit	-6.52
Wildfire Hardening Charge	2.95
Competition Transition Charges (CTC)	-0.55
Taxes and Other	0.25
Total Electric Charges	\$398.07