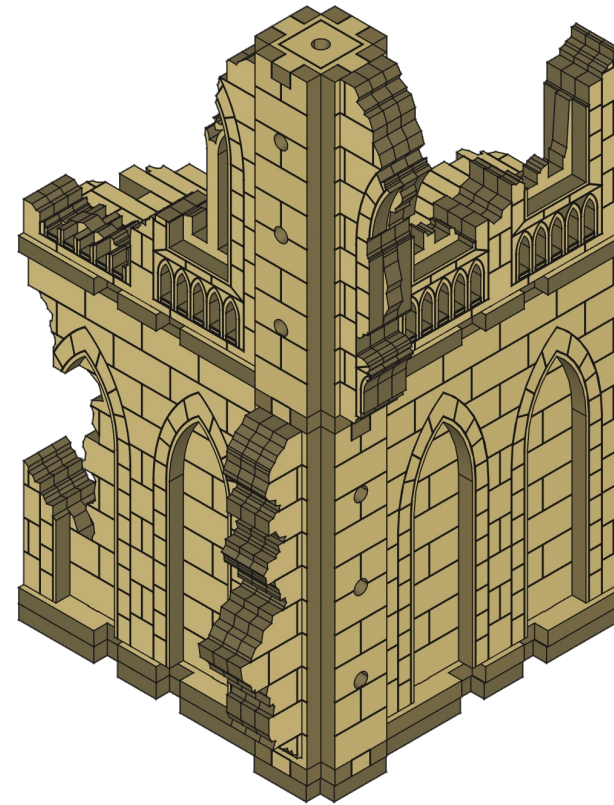


Gothic Cathedral

Ruined Corner 2



43 Pieces

Requires 64 3mm x 3mm neodymium magnets

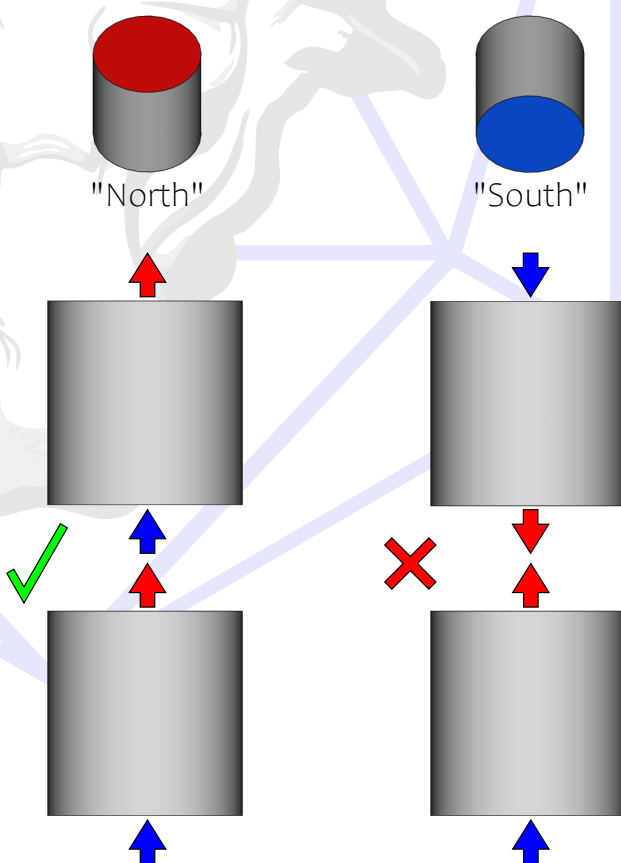


Magnets

Tips and Tricks for Your Success.

WHAT IS POLARITY?

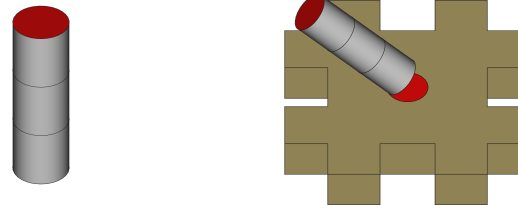
Magnets have a north (+) and a south (-) pole. Opposite poles attract each other and like poles repel. You can't easily tell which side is north or south. In these instructions, red is north and blue is south.



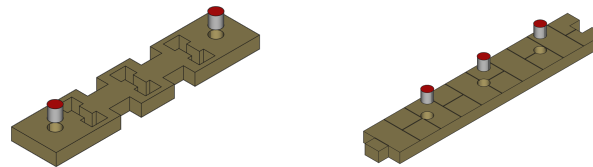
BE CONSISTENT

Because you won't really know which side is north or south, just pick a direction and stick with it. Make one piece and use that to be your guide for the rest.

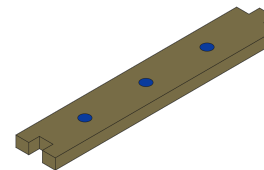
Apply magnets in a stack.
This ensures they are facing the same direction.



Insert the magnets when the pieces are loose.
Make sure they are flush to the exterior side of the piece.

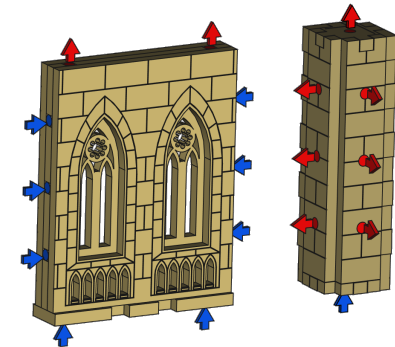


Apply CA glue (super glue) to the back of the magnets.
This will prevent them from falling out or being pulled out.

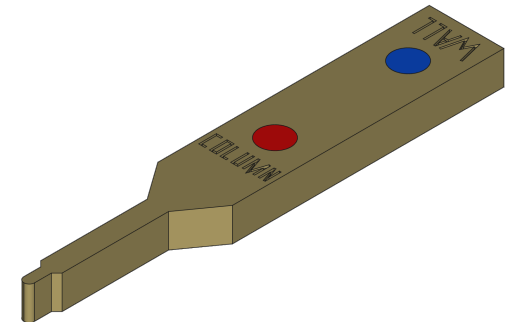


ALIGNMENT

After assembly is finished, the polarities should look like this.
Walls connect horizontally to columns.
Everything stacks vertically.



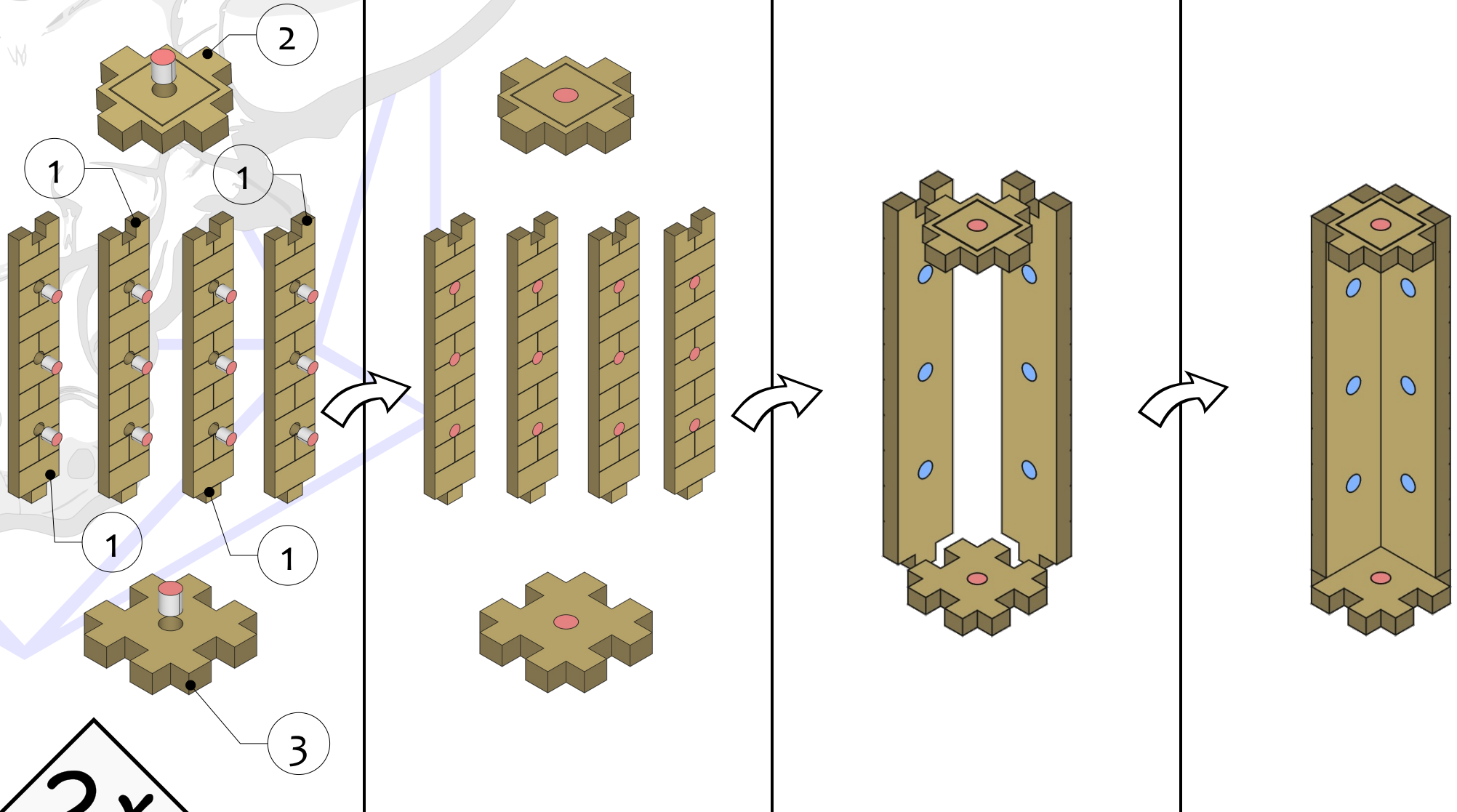
For your convenience, we provide a helper tool in every kit.
This "BSTOOL" has labels to help with aligning your magnets.
Use the tool as if it was a column or wall.
It can also be used to poke pieces out of their sheet or apply glue.



Gothic Cathedral

4-way Column, 1x Tall

Part 1



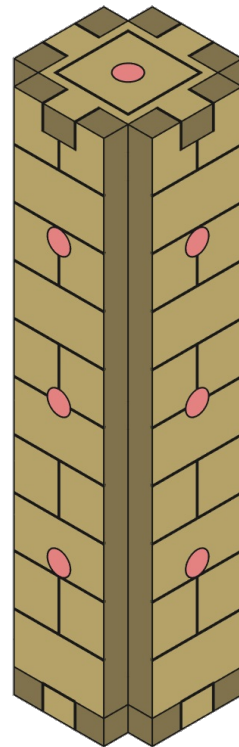
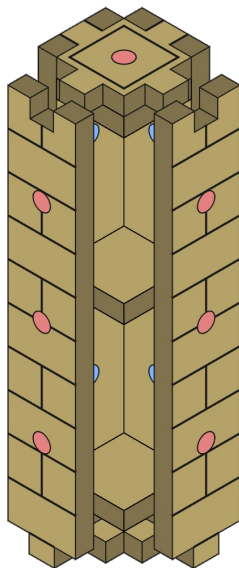
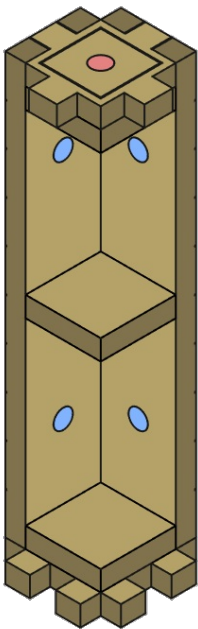
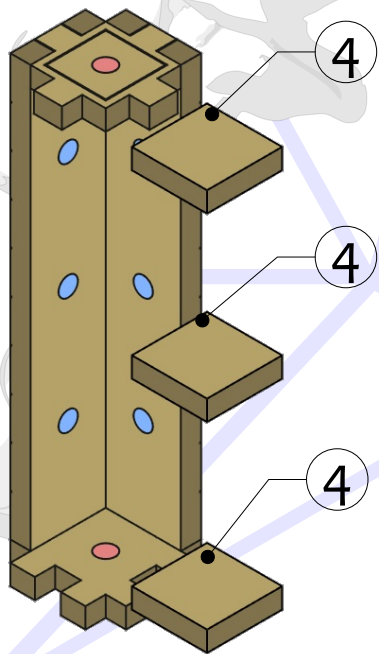
2x



Gothic Cathedral

4-way Column, 1x Tall

Part 2



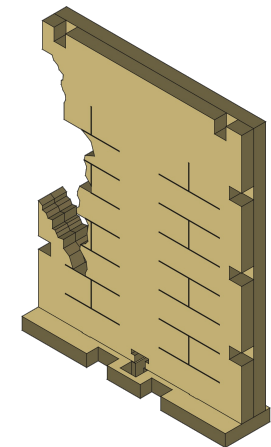
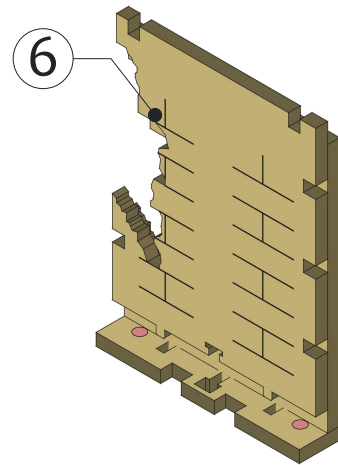
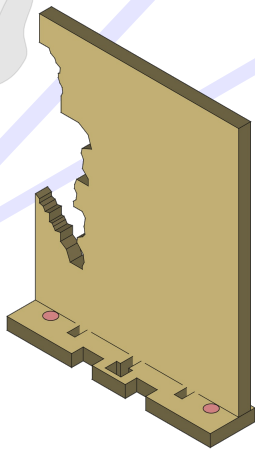
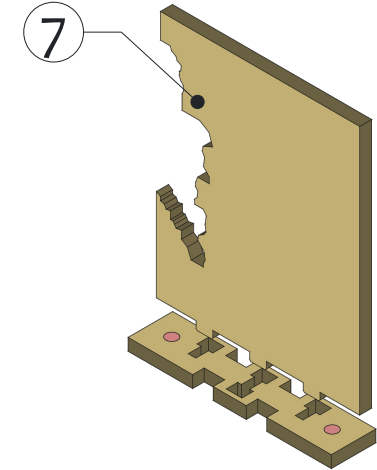
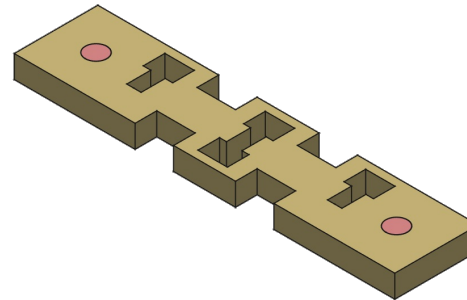
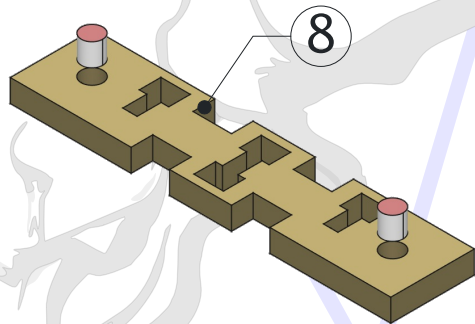
2x



Gothic Cathedral

Double Arch Wall, 1x Tall - Ruined 2

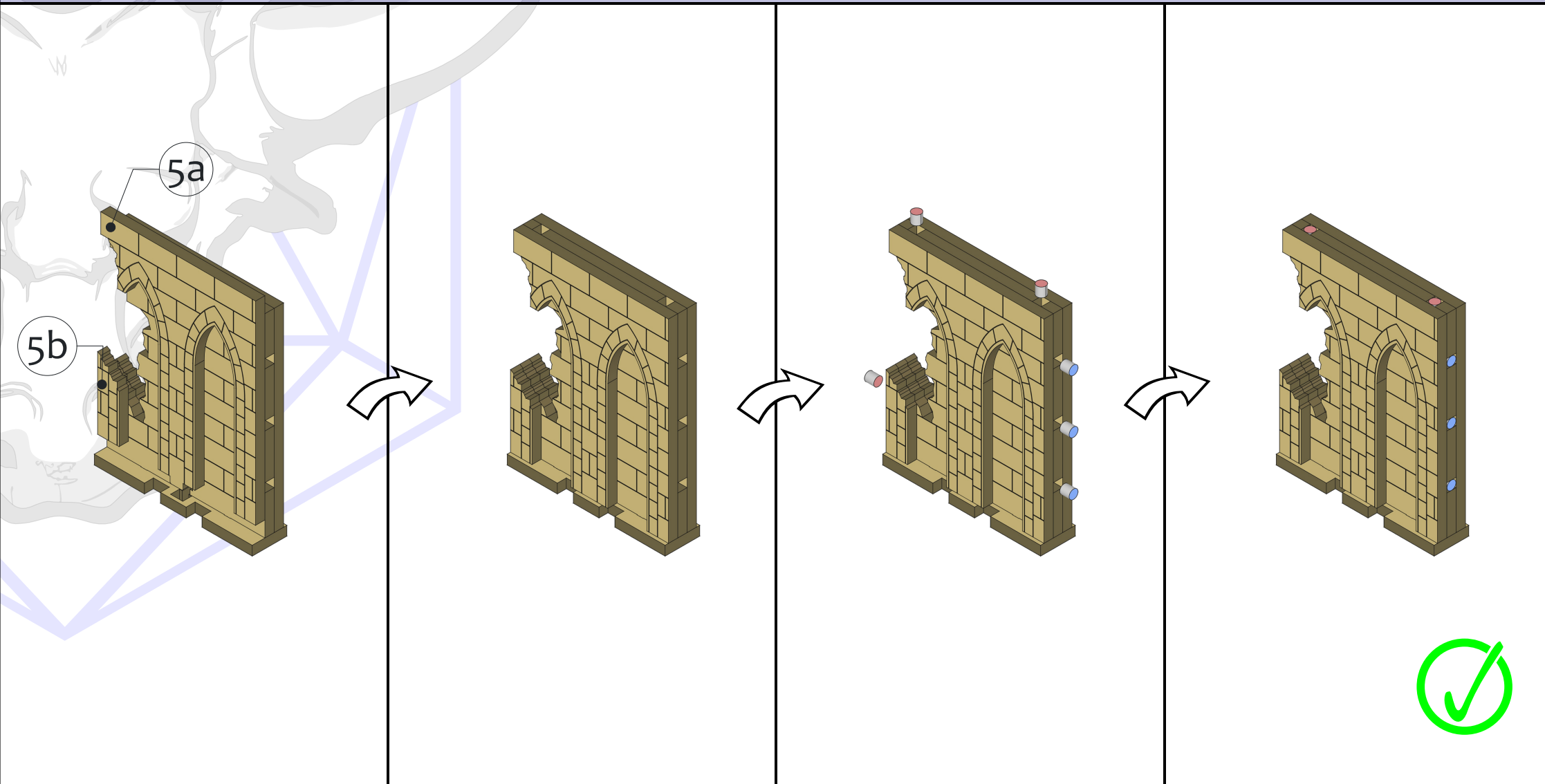
Part 1



Gothic Cathedral

Double Arch Wall, 1x Tall - Ruined 2

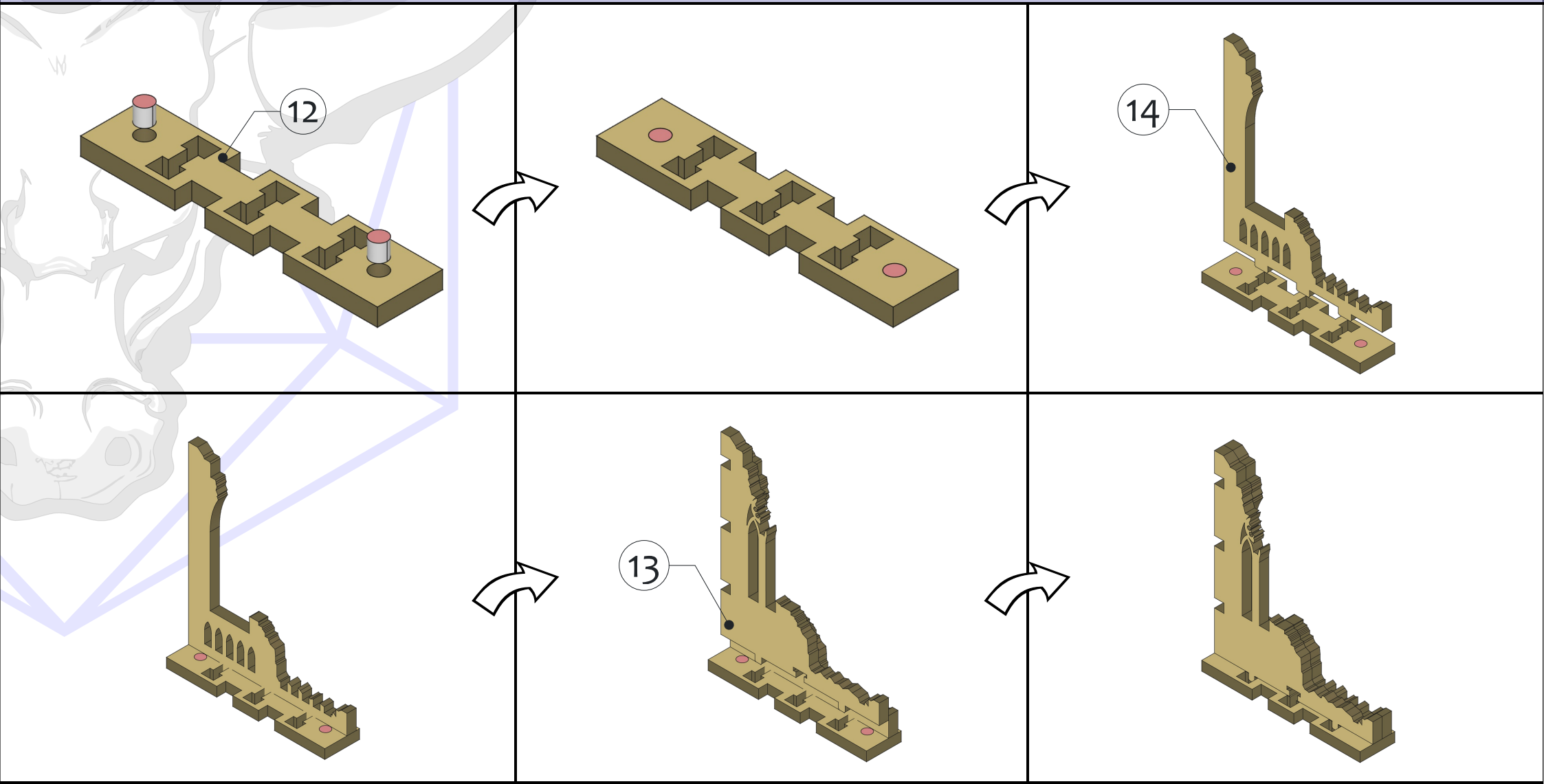
Part 2



Gothic Cathedral

Double Window Wall, 1x Tall - Ruined 8

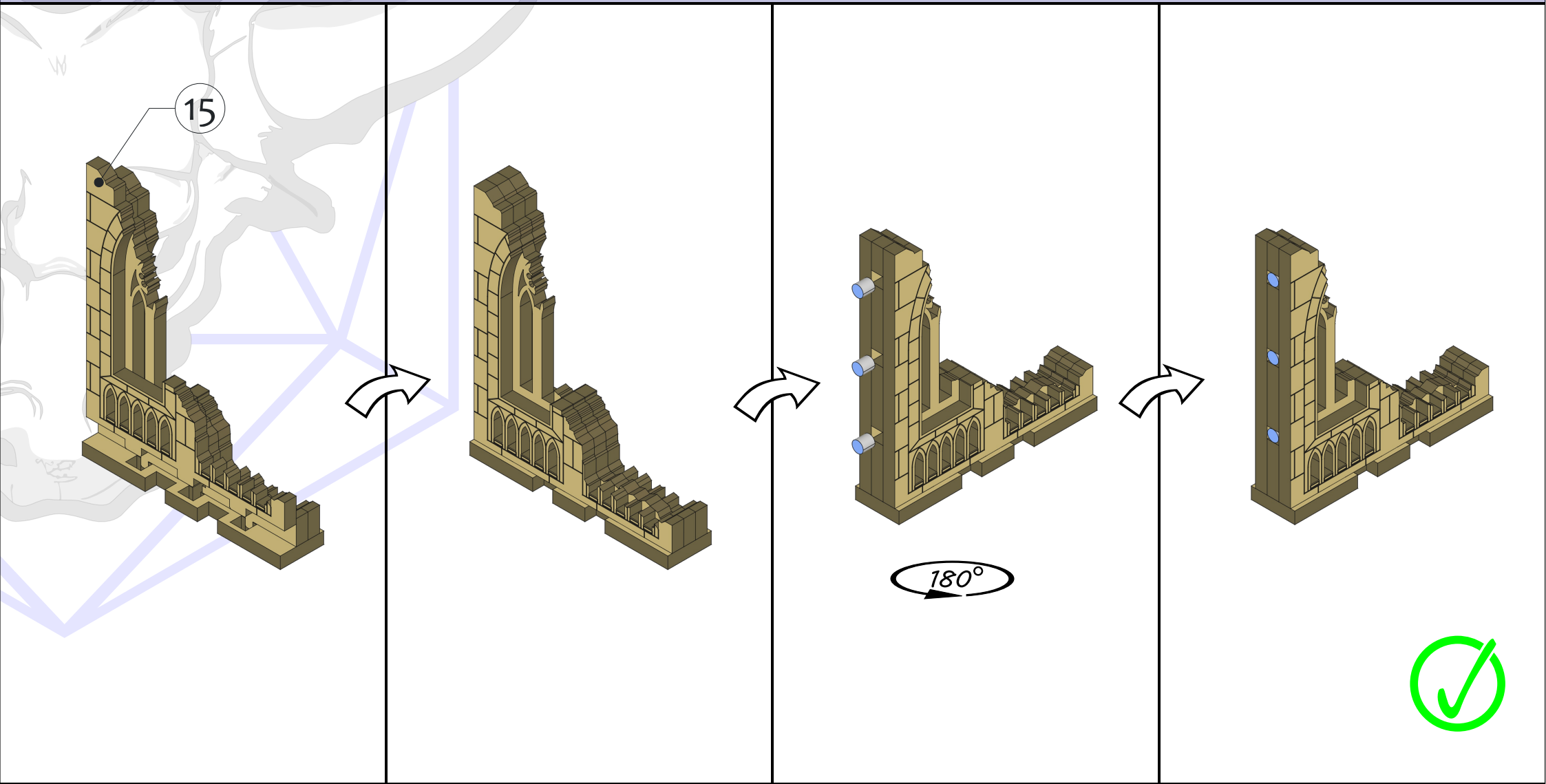
Part 1



Gothic Cathedral

Part 2

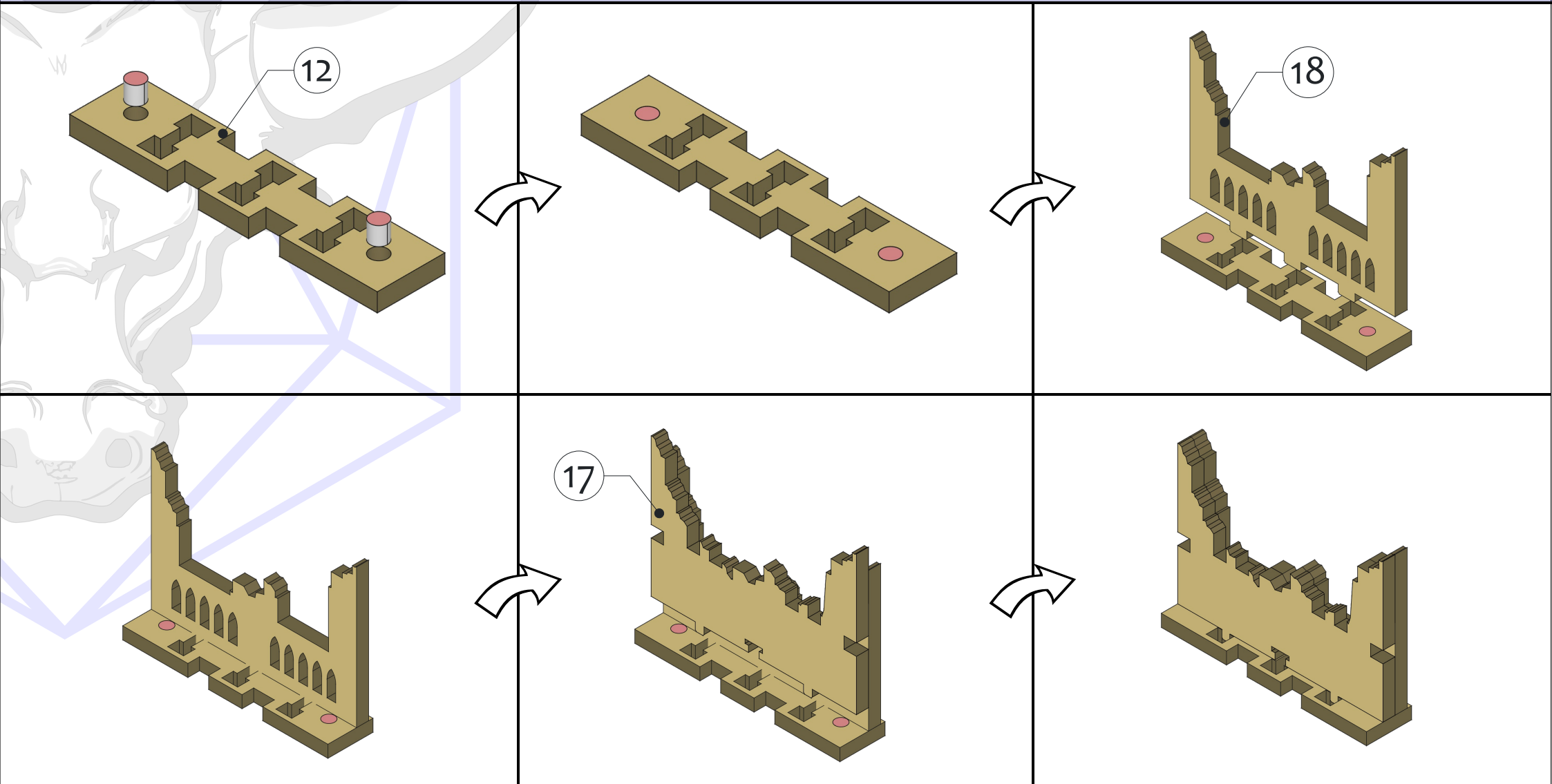
Double Window Wall, 1x Tall - Ruined 8



Gothic Cathedral

Double Window Wall, 1x Tall - Ruined 11

Part 1



Gothic Cathedral

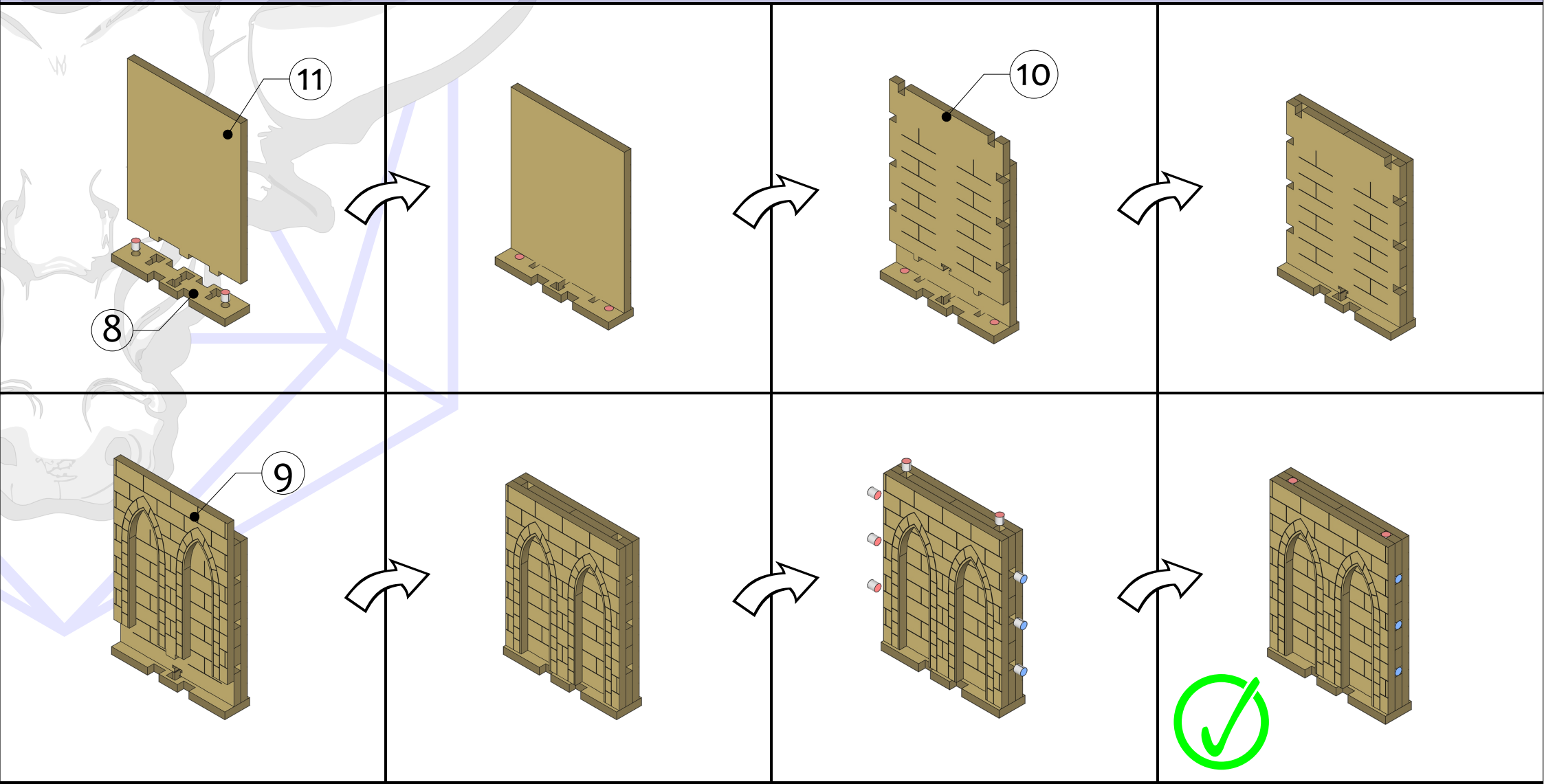
Double Window Wall, 1x Tall - Ruined 11

Part 2



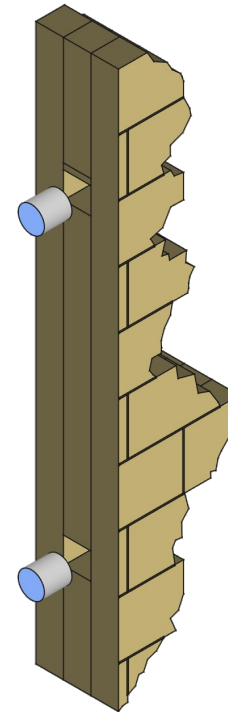
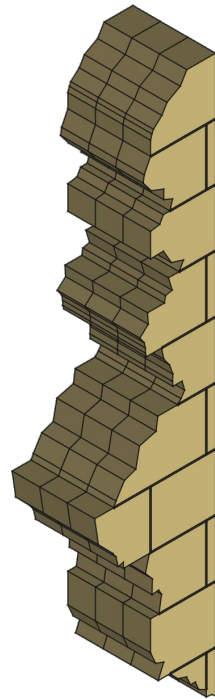
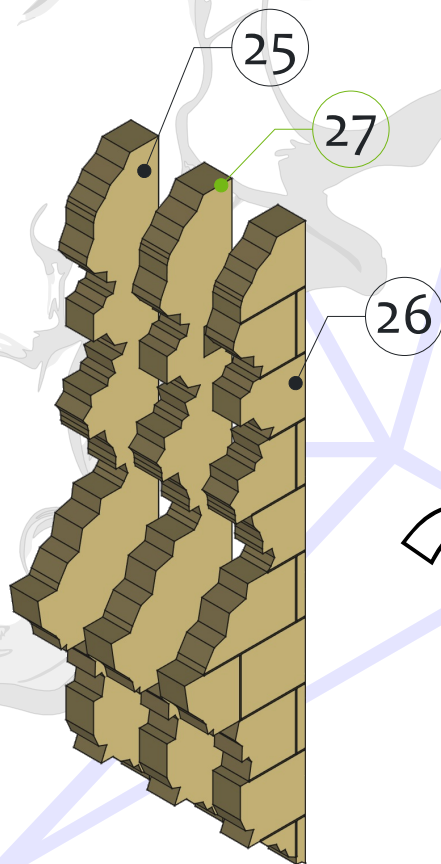
Gothic Cathedral

Double Arch Wall, 1x Tall

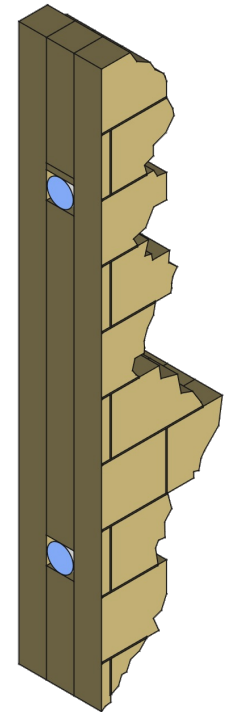


Gothic Cathedral

Column Endcap - Ruined Wall 1

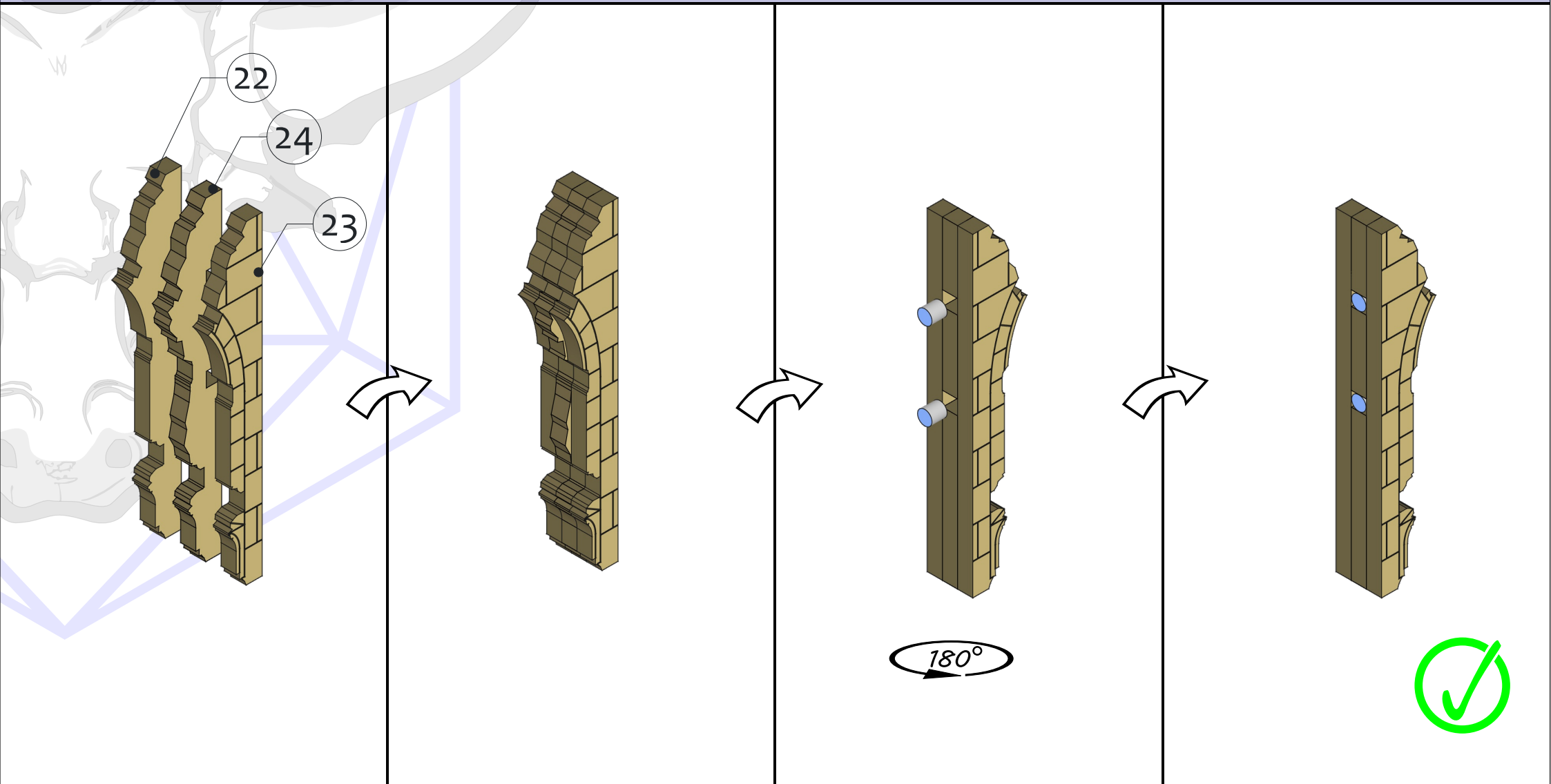


180°



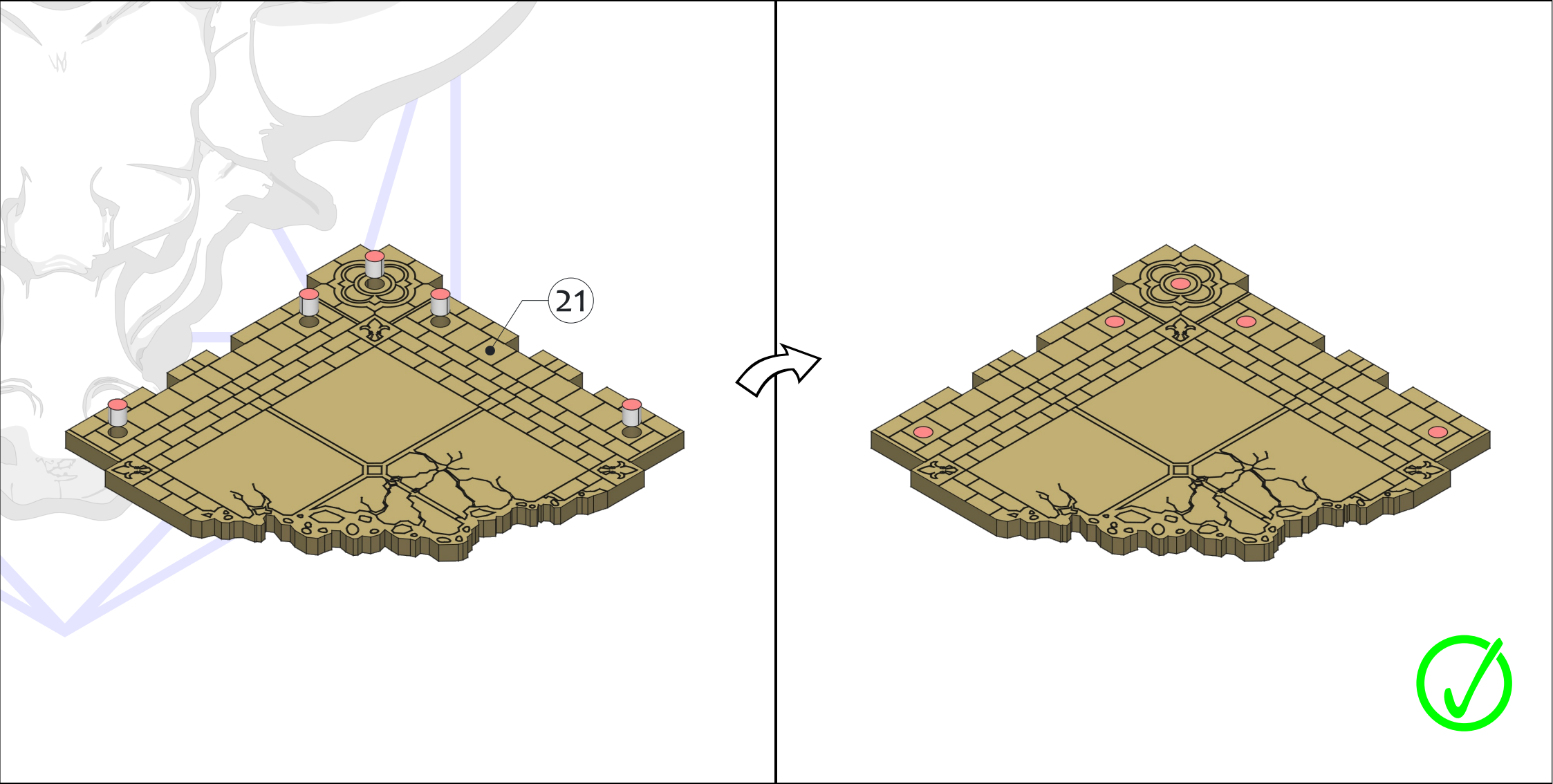
Gothic Cathedral

Column Endcap - Ruined Wall 2



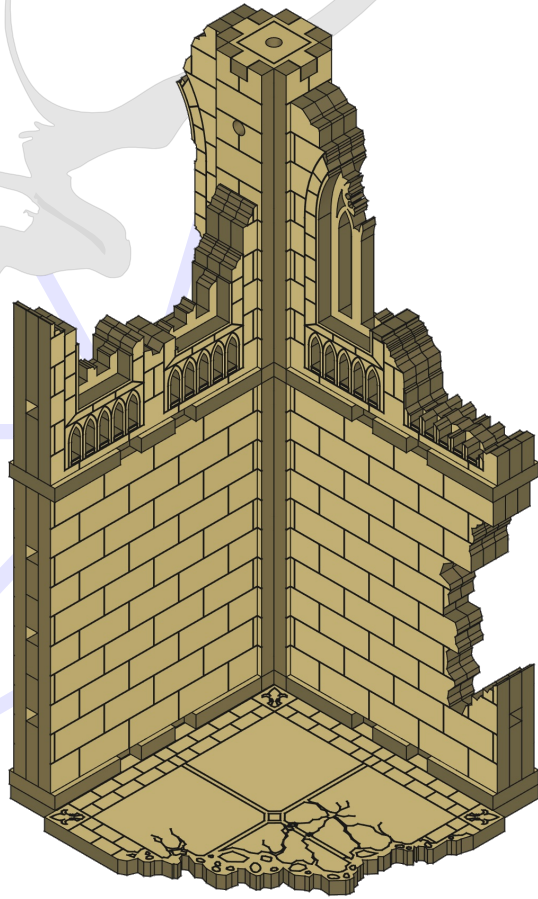
Gothic Cathedral

Stone Tile Floor - Ruined 1

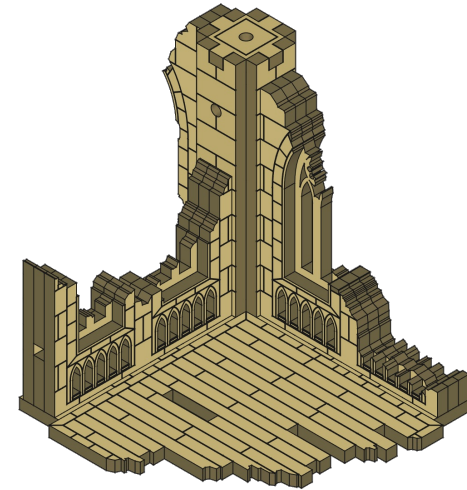


Gothic Cathedral

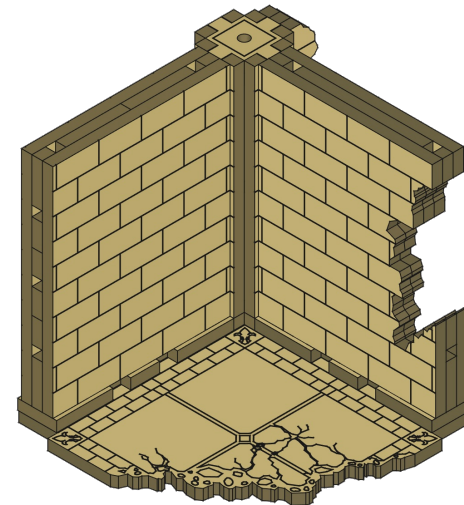
Ruined Corner 2 - Alternate Builds



Remove the upper floor to give the walls a taller look.



The bottom and top sections can also be used as two separate corners.



Gothic Cathedral – Ruined Corner 2 (GR-K003)

Part List

Module	Part	Qty.	Piece #	Pages
4-way Column, 1x Tall (GC-MC004) x2	GC-CW1101	8	1	2
	GC-CB0201	2	2	2
	GC-CB0101	2	3	2
	GC-CS0001	6	4	3
Double Arch Wall, 1x Tall – Ruined 2 (GR-MW011)	GR-WW1138	1	6	4
	GR-WW1139	1	7	4
	GR-WB1102	1	8	4
	GR-WW1137	1	5a/5b	5
Double Window Wall, 1x Tall – Ruined 8 (GR-MW013)	GC-WB1101	1	12	6
	GR-WW1126	1	13	6
	GR-WW1127	1	14	6
	GR-WW1125	1	15	7
Double Window Wall, 1x Tall – Ruined 11 (GR-MW016)	GC-WB1101	1	12	8
	GR-WW1135	1	17	8
	GR-WW1136	1	18	8
	GR-WW1134	1	16	9
Double Arch Wall, 1x Tall (GC-MW004)	GC-WB1102	1	8	10
	GC-WW1103	1	9	10
	GC-WW1104	1	10	10
	GC-WW1105	1	11	10
Column Endcap – Ruined Wall 1 (GR-MC003)	GR-CE001	1	26	11
	GR-CE002	1	27	11
	GR-CE003	1	25	11
Column Endcap – Ruined Wall 2 (GR-MC004)	GR-CE004	1	23	12
	GR-CE005	1	24	12
	GR-CE006	1	22	12
Stone Tile Floor – Ruined 1 (GR-FS0004)	GR-FS0004	1	21	13
Gothic L-Brace (GC-BL0001)	GC-BL0001	1	19	Extra
Wood Plank Floor – Ruined 2 (GR-FW0004)	GR-FW0004	1	20	N/A
BS TOOL	BSTOOL	8	*	N/A

