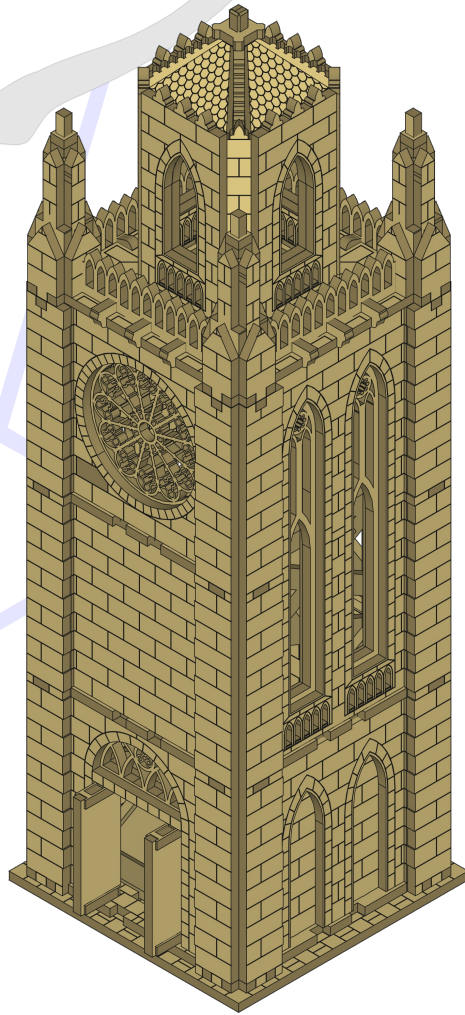


Gothic Cathedral

Rose Dice Tower



197 Pieces

Requires 220 3mm x 3mm neodymium magnets

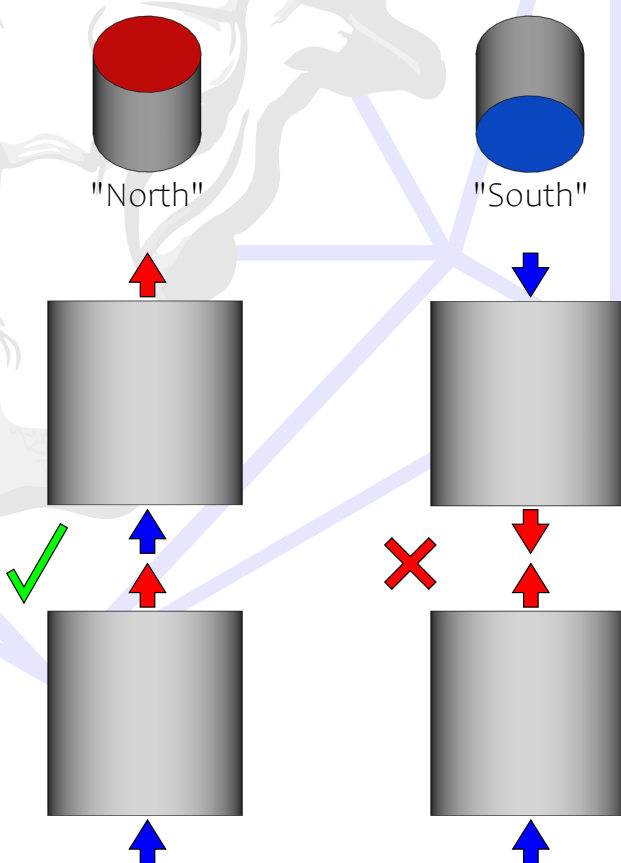


Magnets

Tips and Tricks for Your Success.

WHAT IS POLARITY?

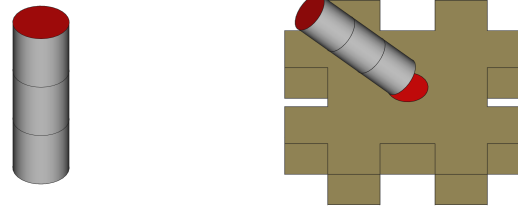
Magnets have a north (+) and a south (-) pole. Opposite poles attract each other and like poles repel. You can't easily tell which side is north or south. In these instructions, red is north and blue is south.



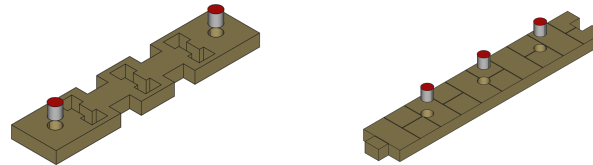
BE CONSISTENT

Because you won't really know which side is north or south, just pick a direction and stick with it. Make one piece and use that to be your guide for the rest.

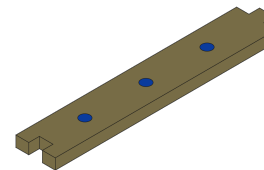
Apply magnets in a stack.
This ensures they are facing the same direction.



Insert the magnets when the pieces are loose.
Make sure they are flush to the exterior side of the piece.

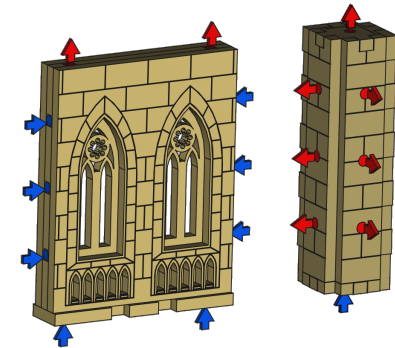


Apply CA glue (super glue) to the back of the magnets.
This will prevent them from falling out or being pulled out.

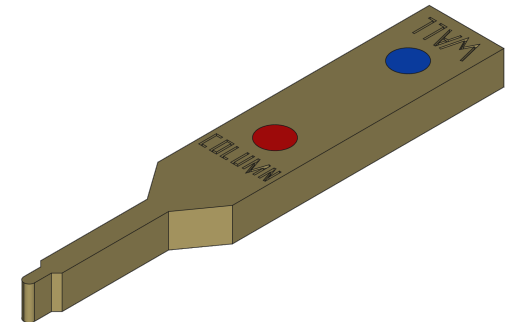


ALIGNMENT

After assembly is finished, the polarities should look like this.
Walls connect horizontally to columns.
Everything stacks vertically.



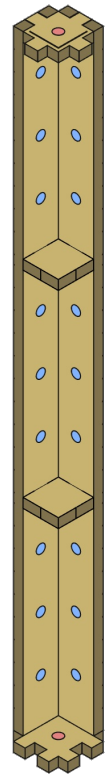
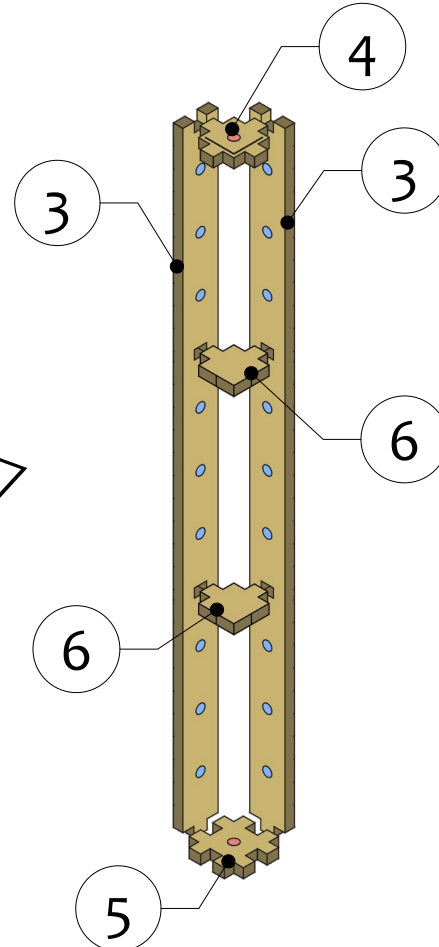
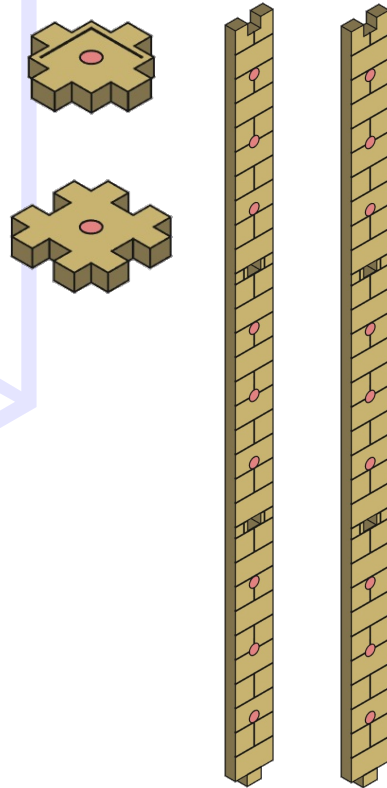
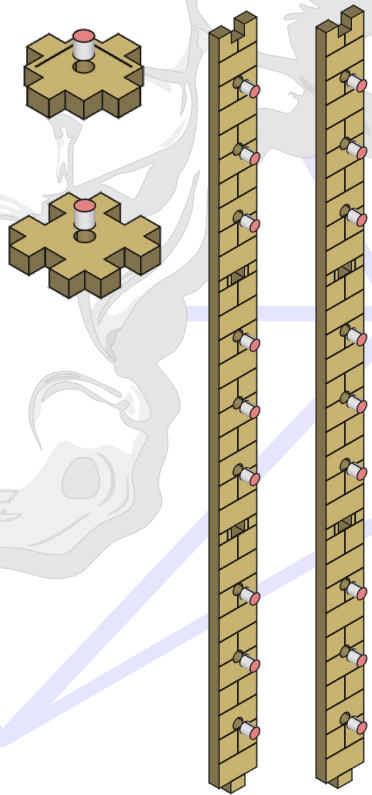
For your convenience, we provide a helper tool in every kit.
This "BSTOOL" has labels to help with aligning your magnets.
Use the tool as if it was a column or wall.
It can also be used to poke pieces out of their sheet or apply glue.



Gothic Cathedral

Flat Faced Corner Column, 3x Tall

Part 1



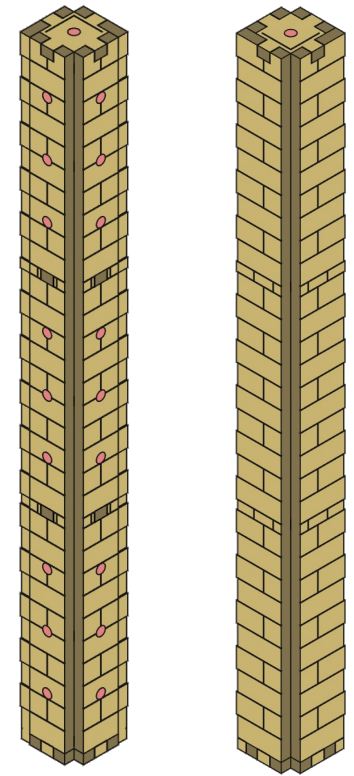
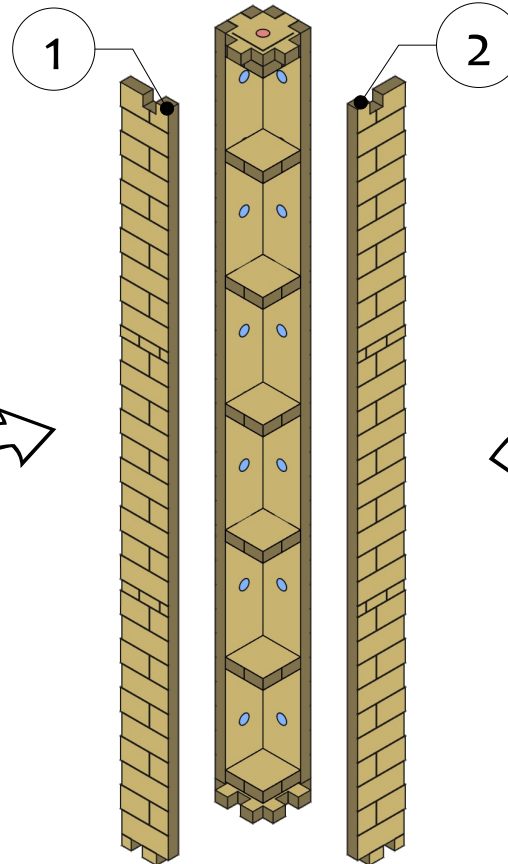
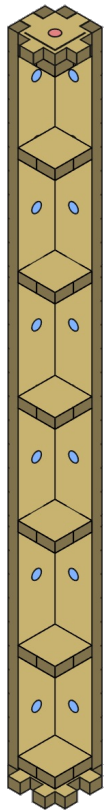
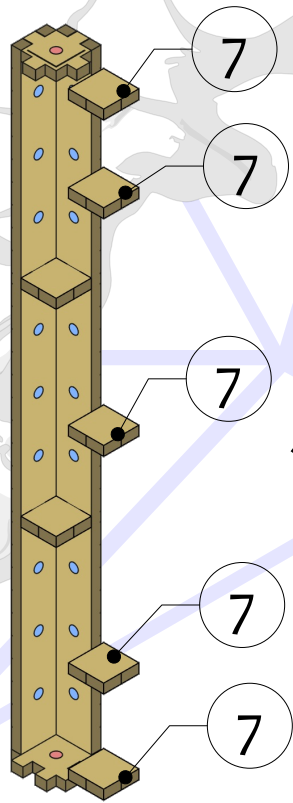
4x



Gothic Cathedral

Flat Faced Corner Column, 3x Tall

Part 2



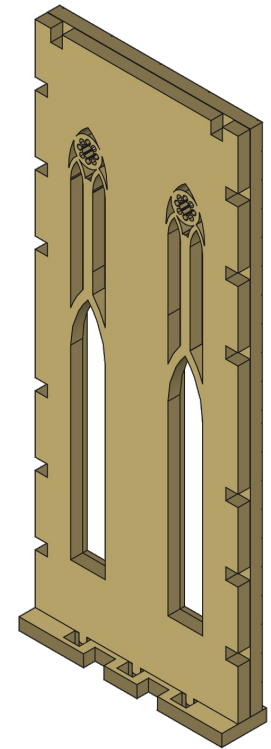
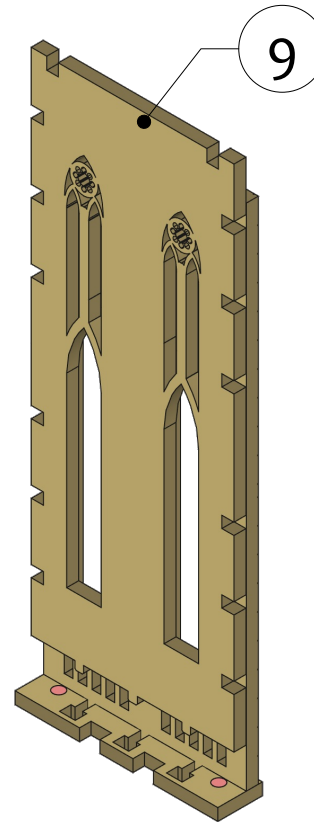
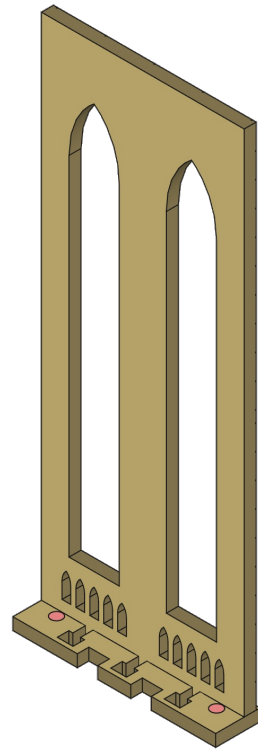
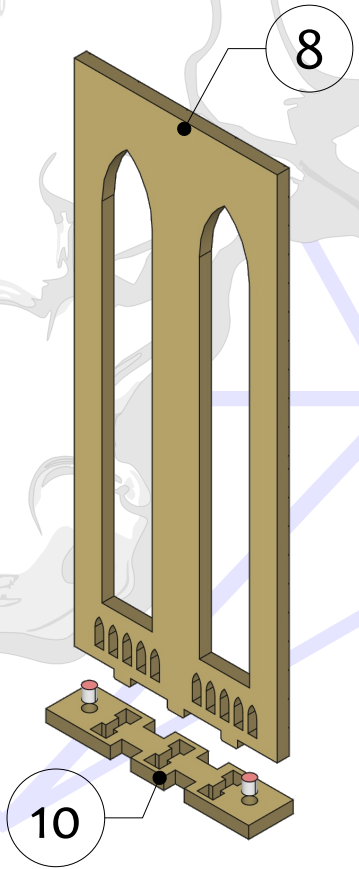
4x



Gothic Cathedral

Double Window Wall, 2x Tall

Part 1



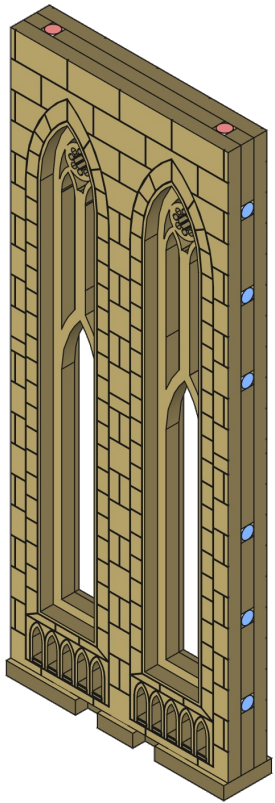
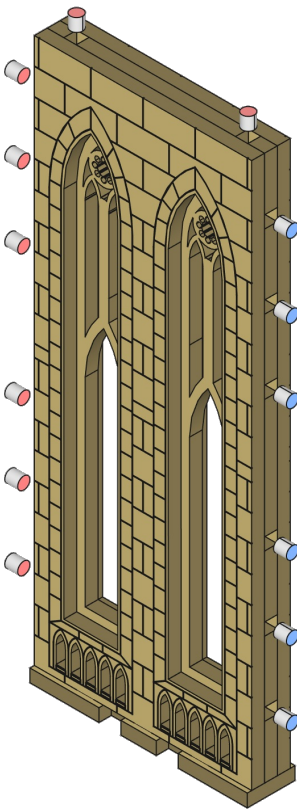
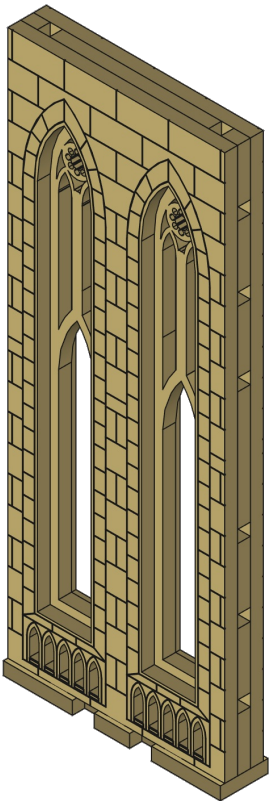
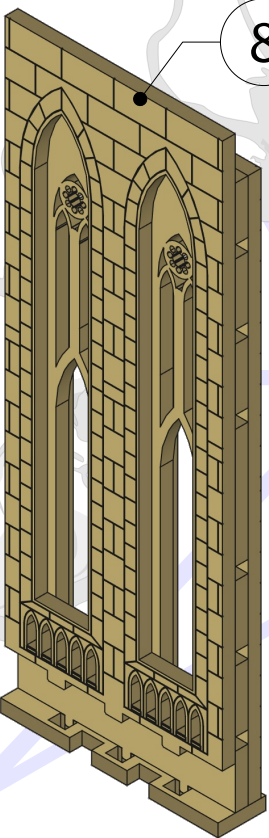
3x



Gothic Cathedral

Double Window Wall, 2x Tall

Part 2

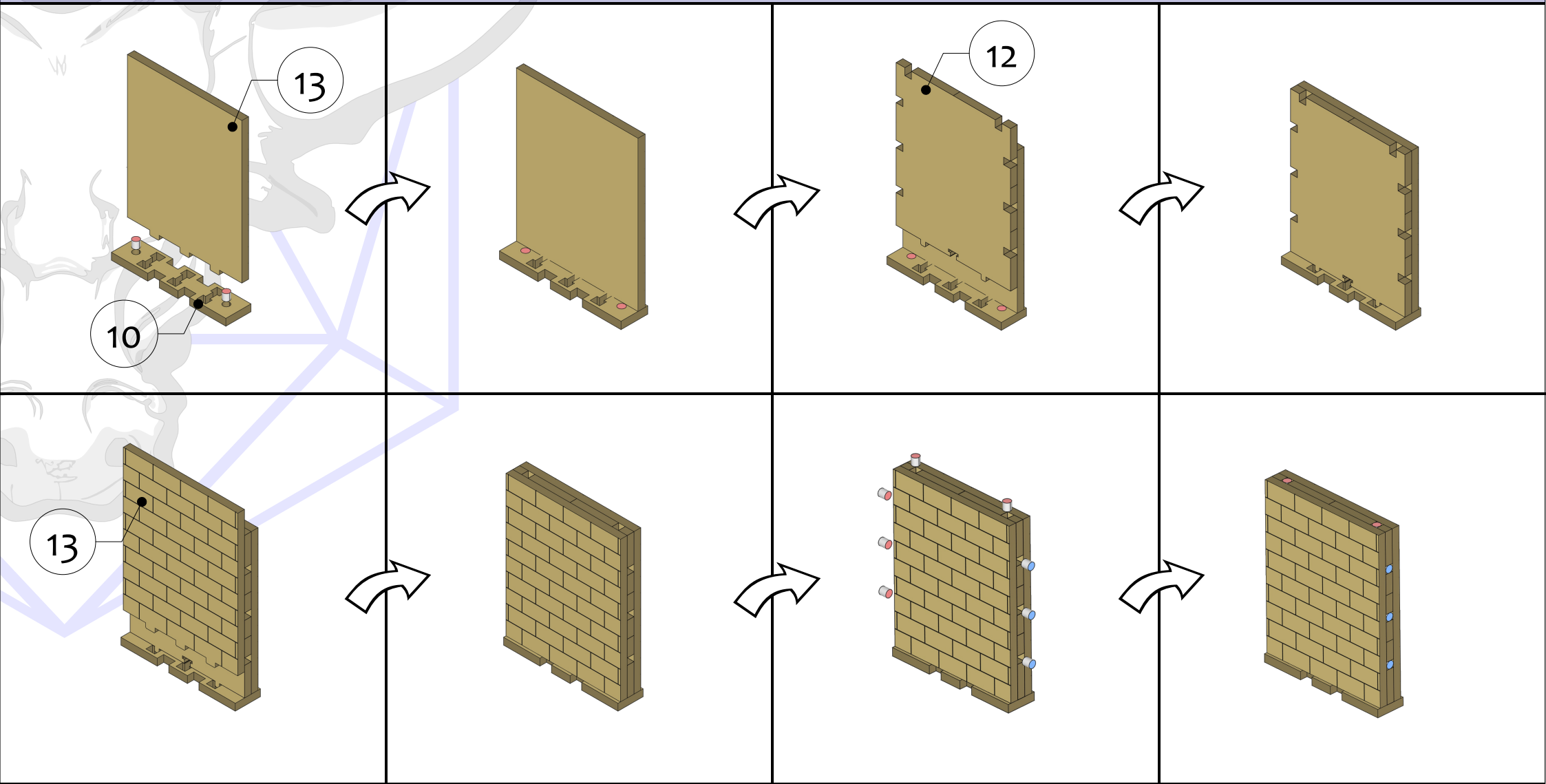


3x



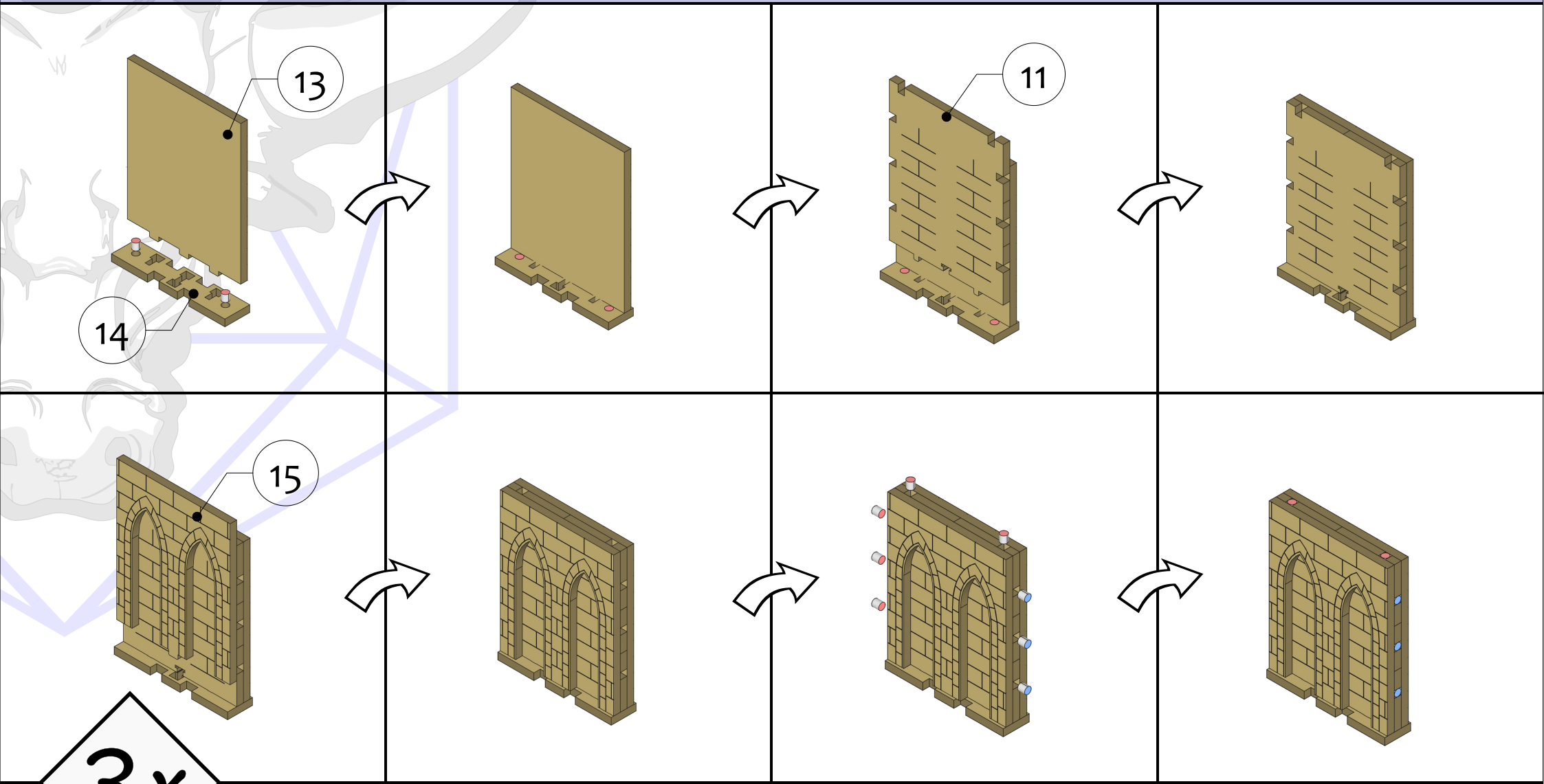
Gothic Cathedral

Flat Faced Wall, 1x Tall



Gothic Cathedral

Double Arch Wall, 1x Tall

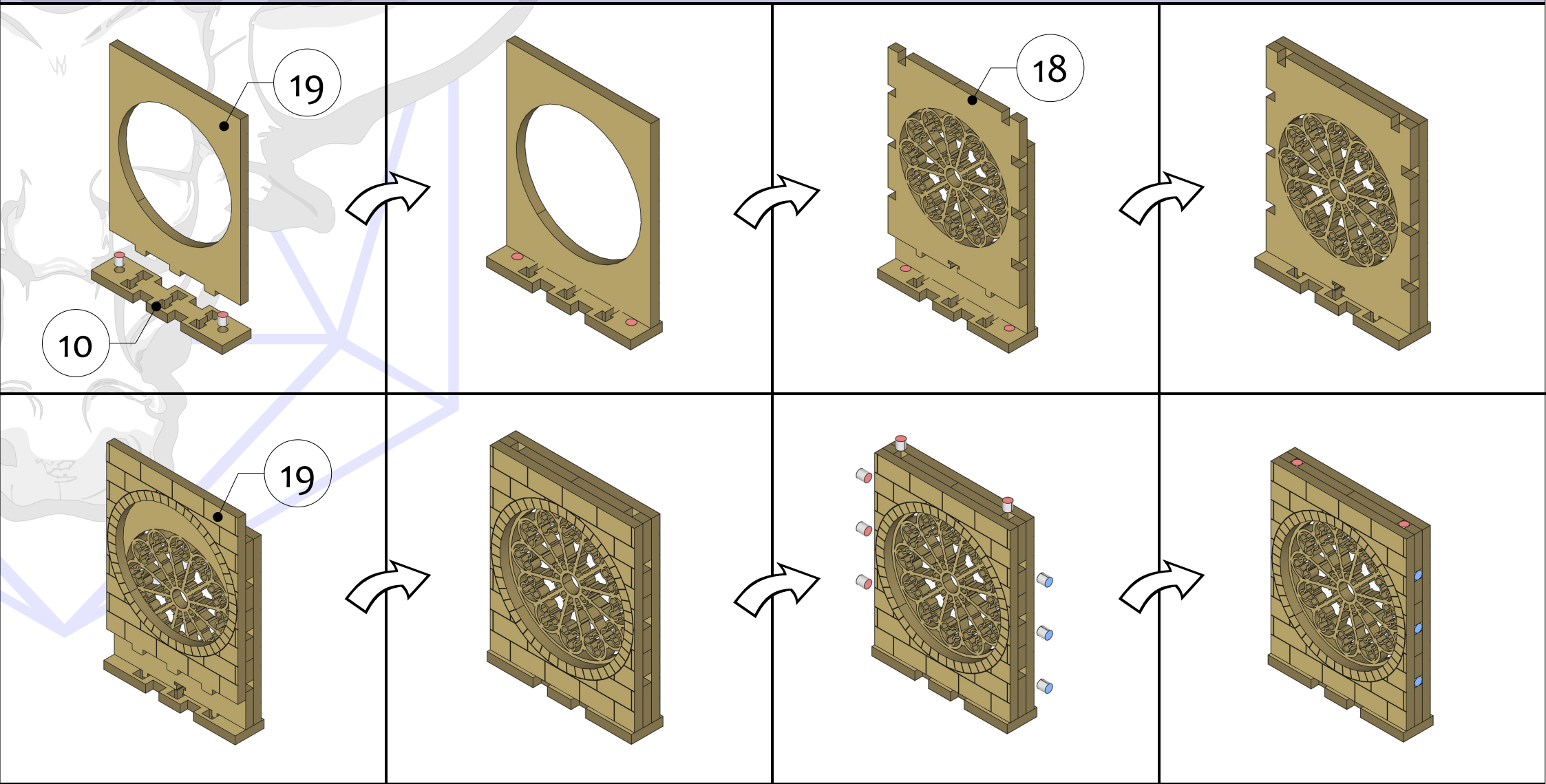


3x



Gothic Cathedral

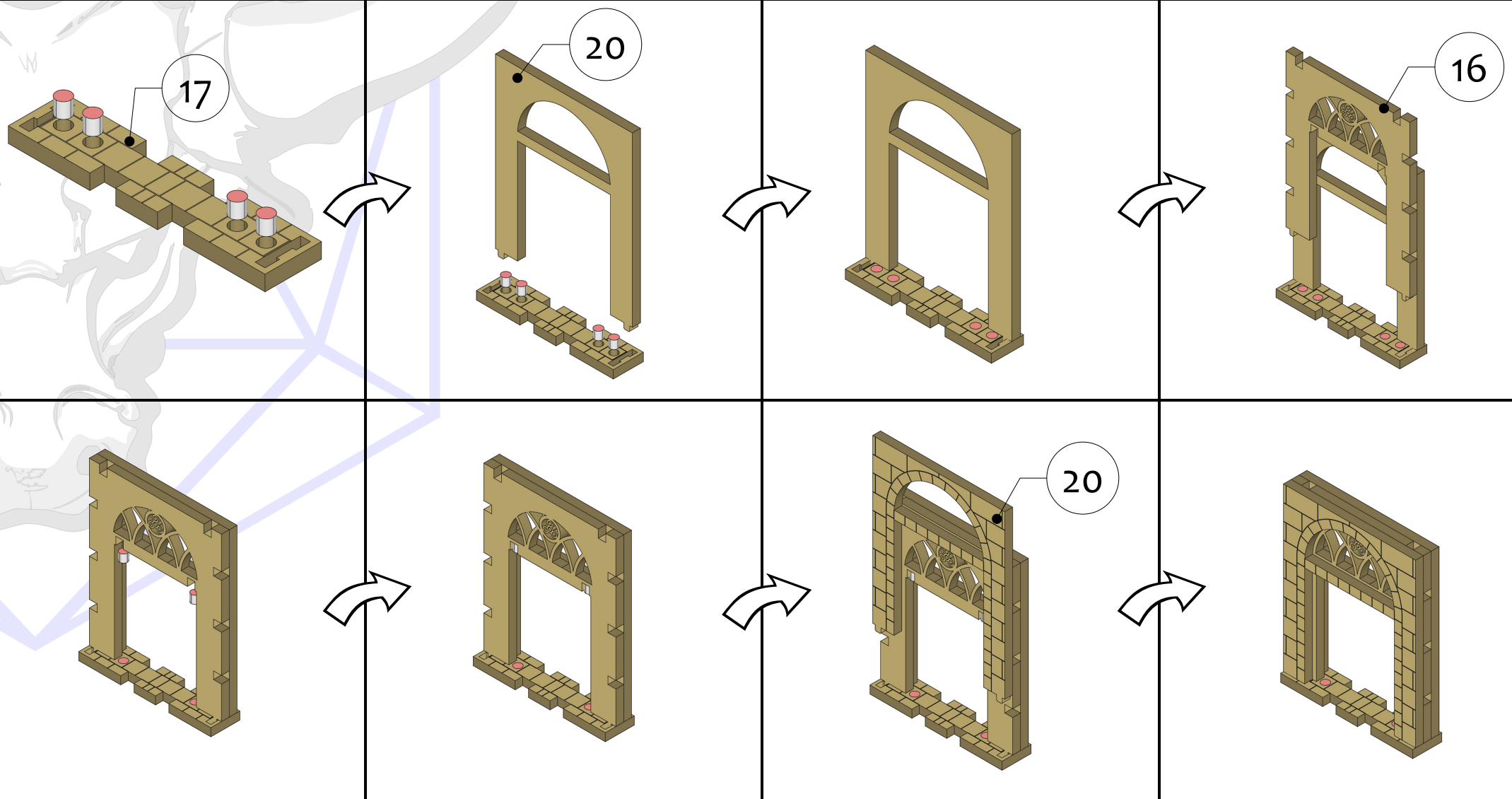
Rose Window, 1x Tall



Gothic Cathedral

Double Door, 1x Tall

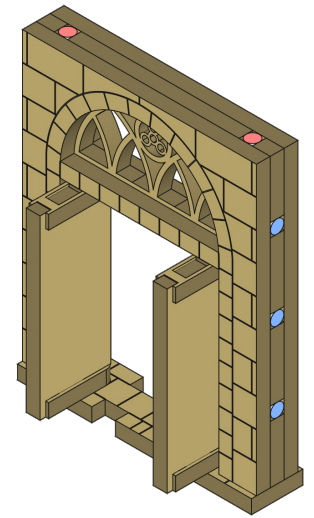
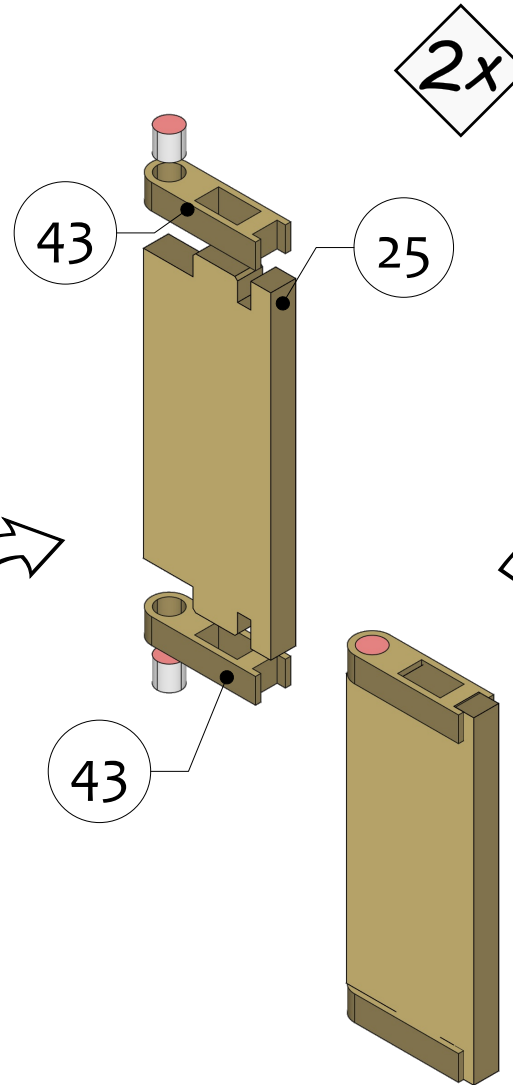
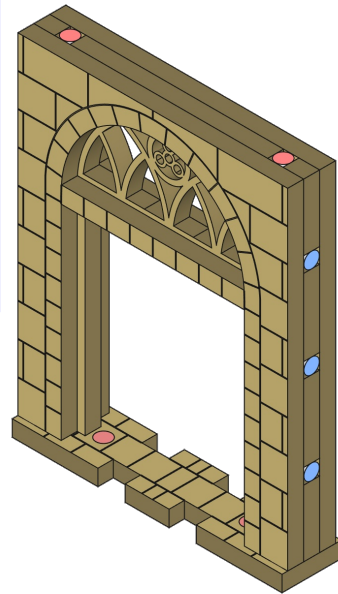
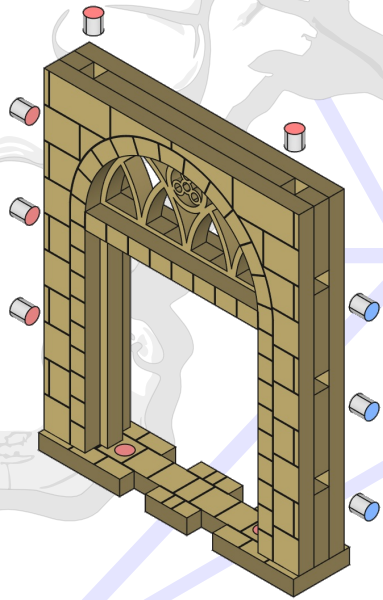
Part 1



Gothic Cathedral

Double Door, 1x Tall

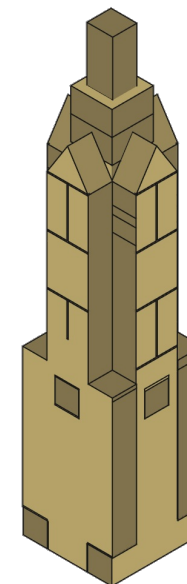
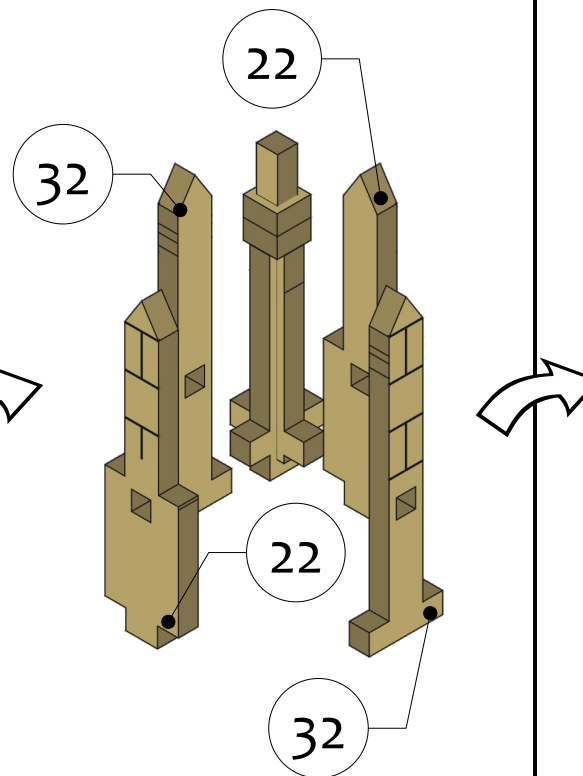
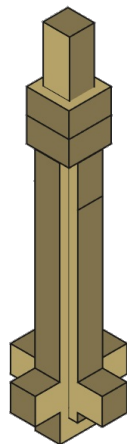
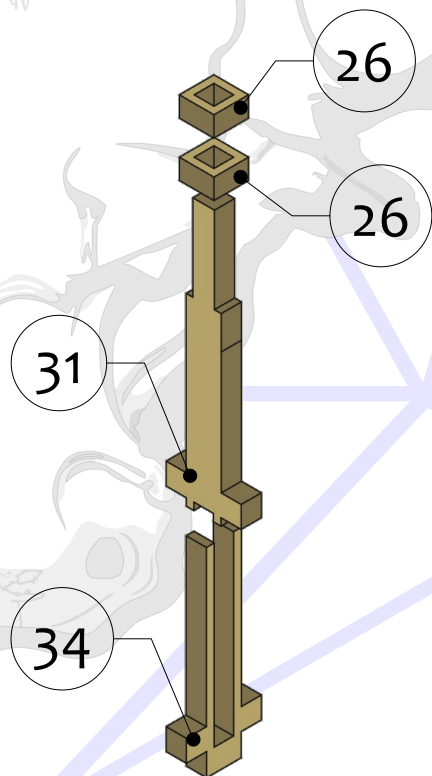
Part 2



Gothic Cathedral

Rose Tower Roof

Part 1



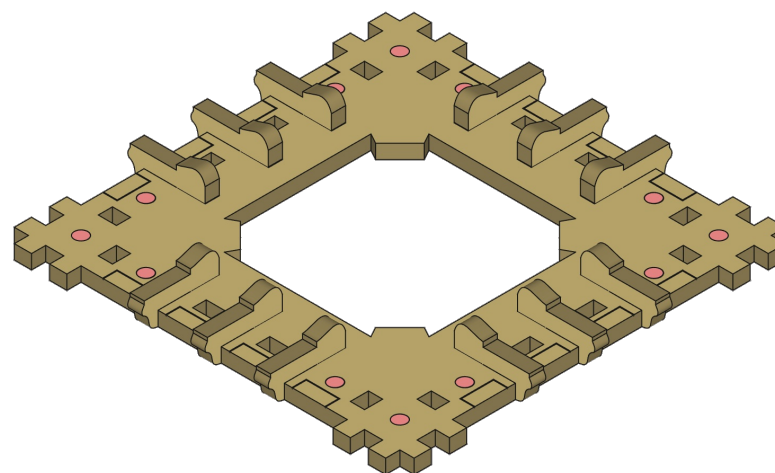
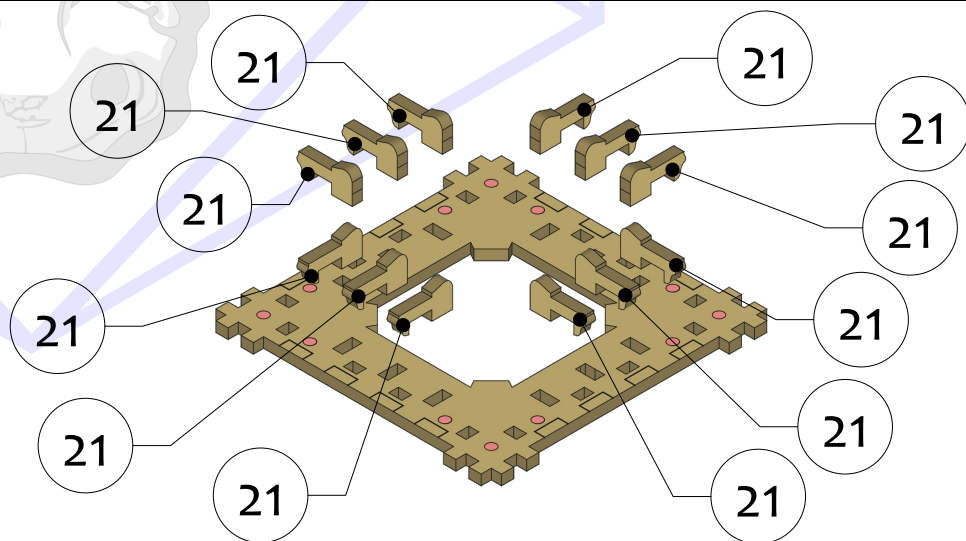
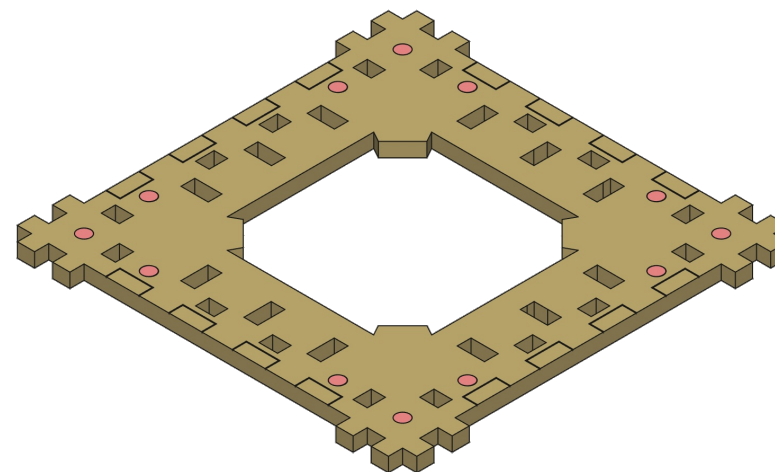
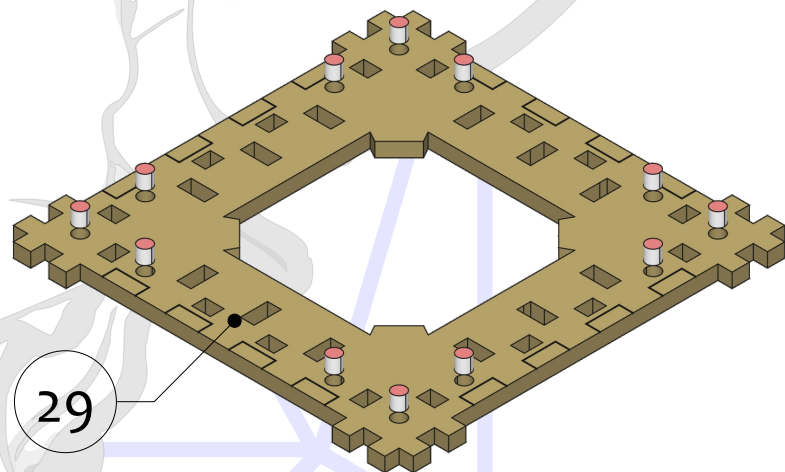
4x



Gothic Cathedral

Rose Tower Roof

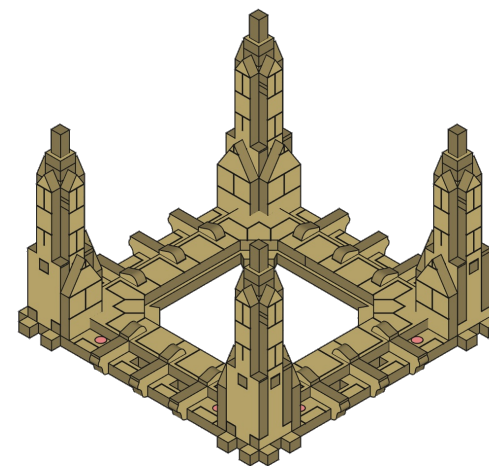
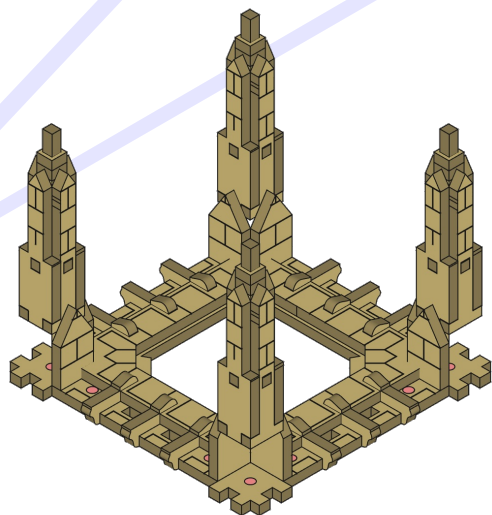
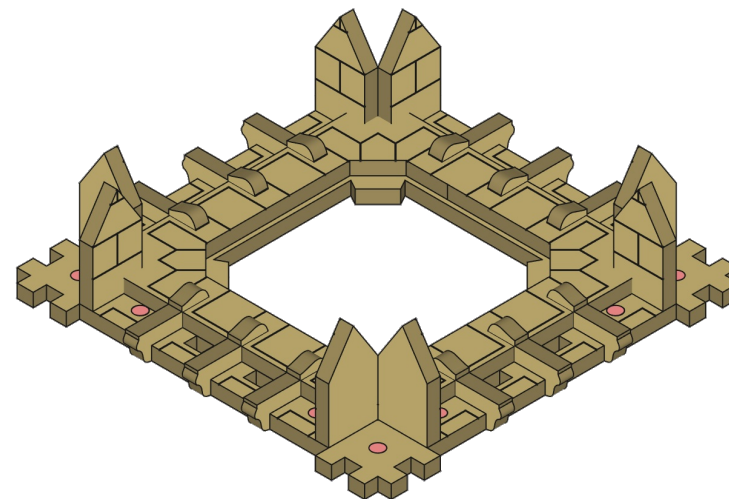
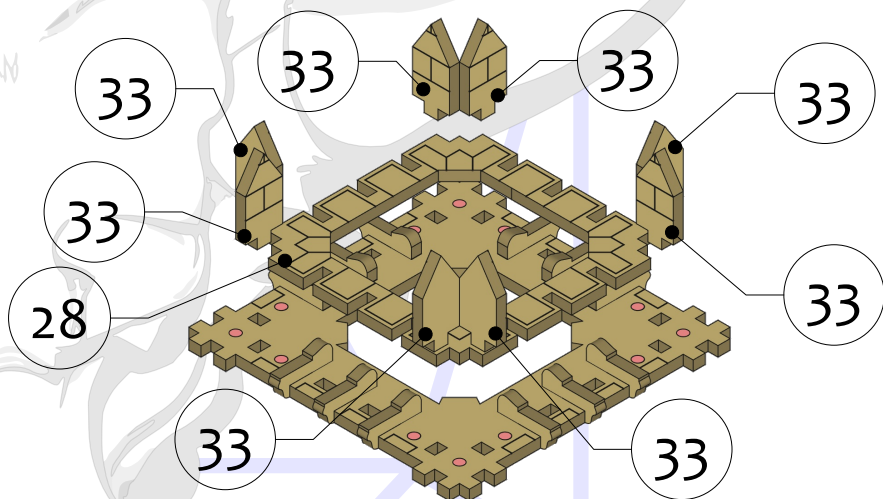
Part 2



Gothic Cathedral

Rose Tower Roof

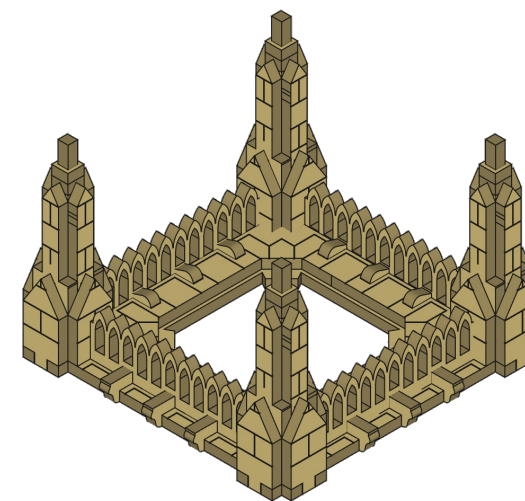
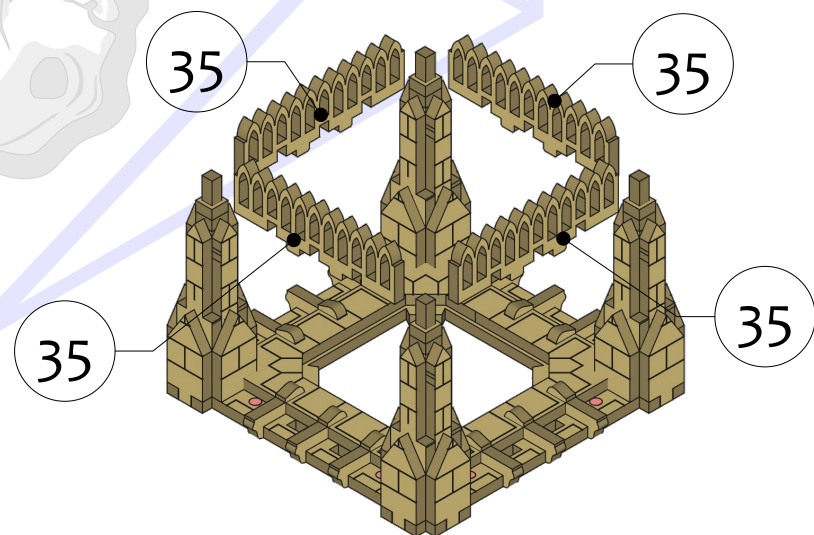
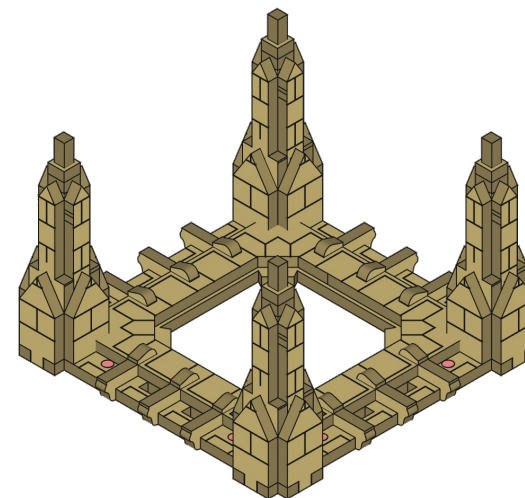
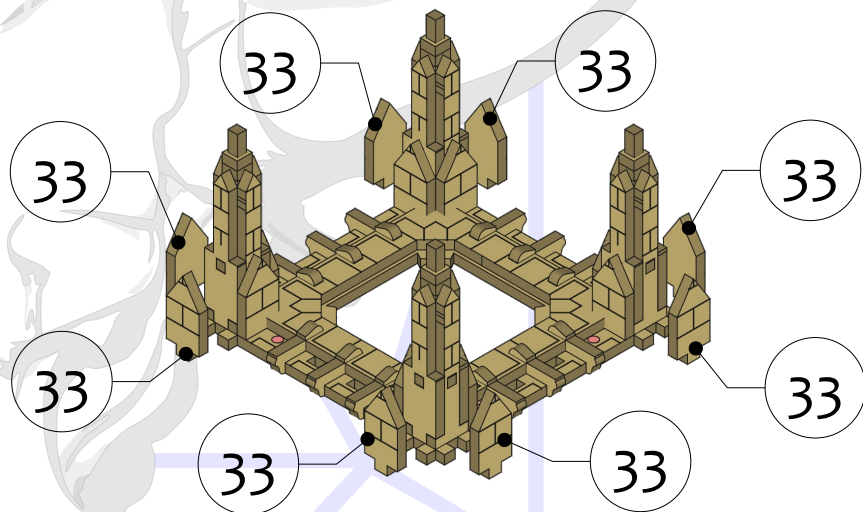
Part 3



Gothic Cathedral

Rose Tower Roof

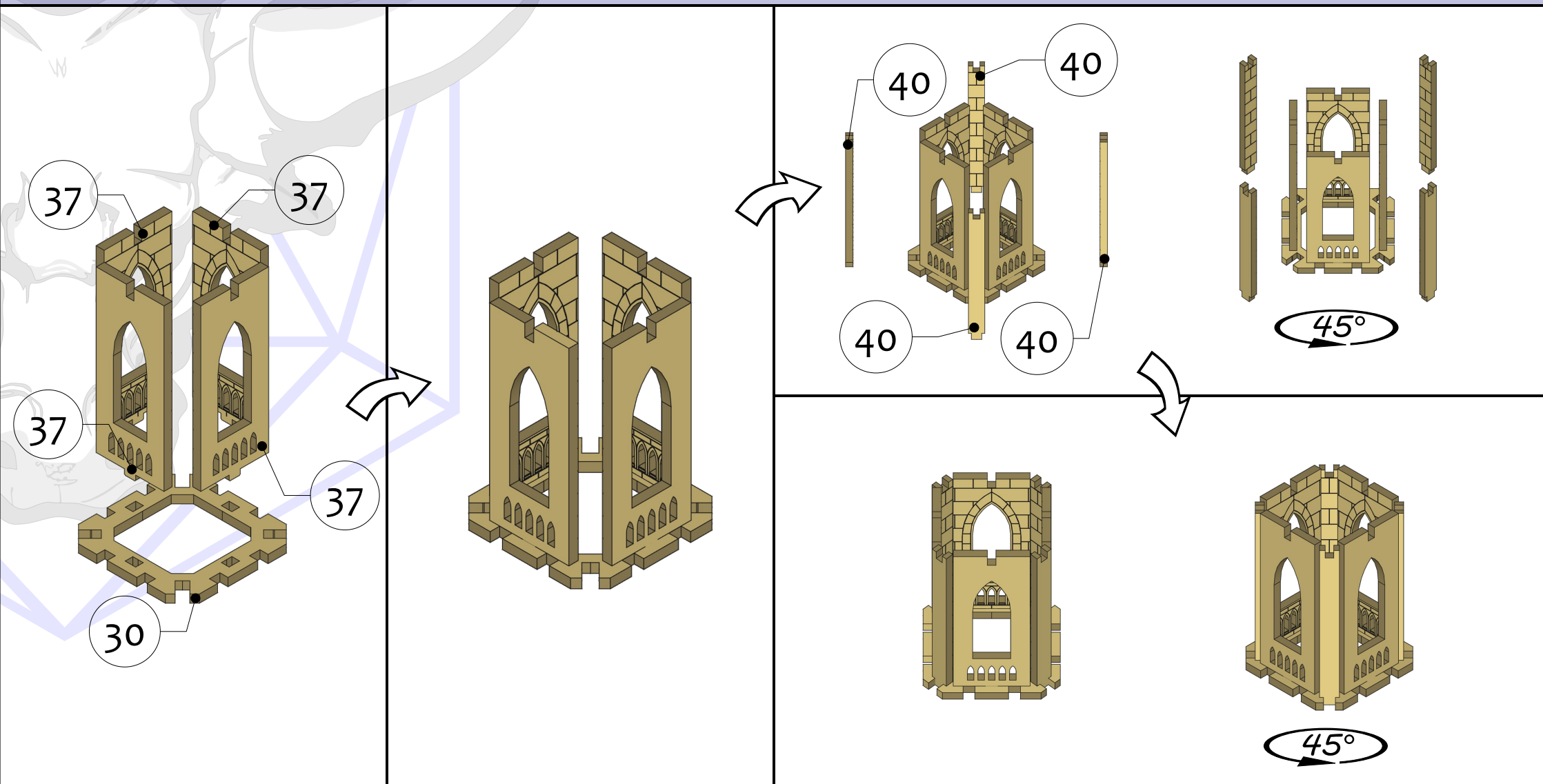
Part 4



Gothic Cathedral

Rose Tower Roof - Bell tower

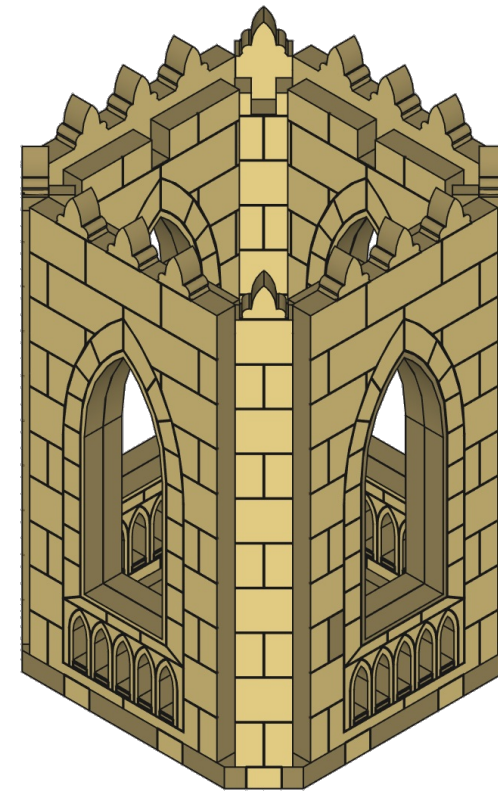
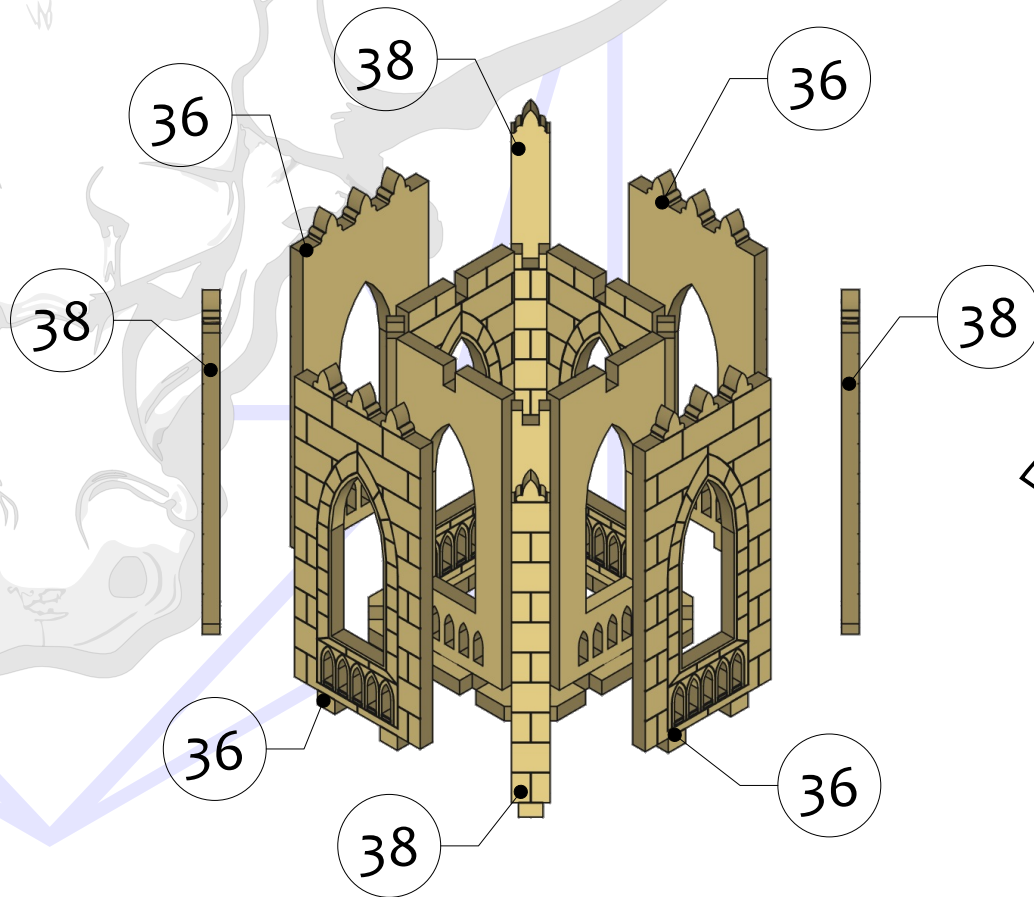
Part 1



Gothic Cathedral

Rose Tower Roof - Bell tower

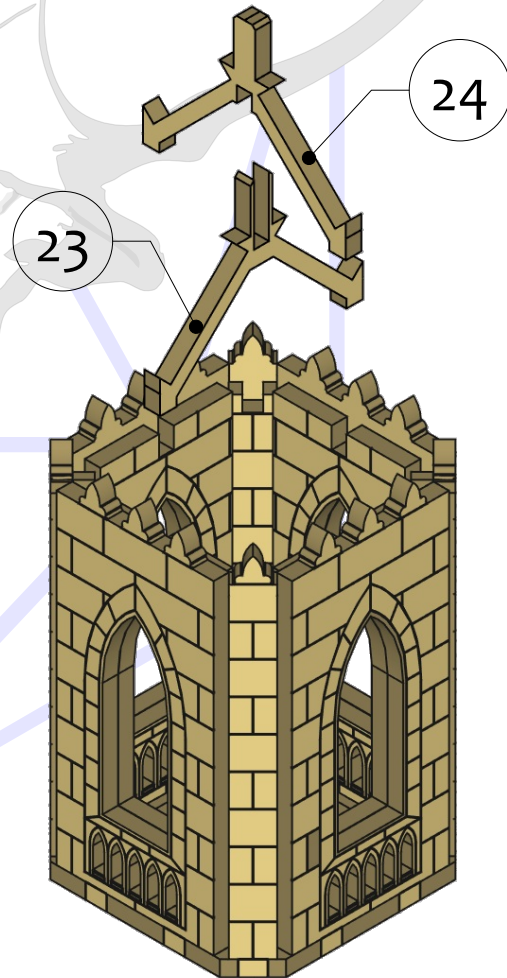
Part 2



Gothic Cathedral

Rose Tower Roof - Bell tower

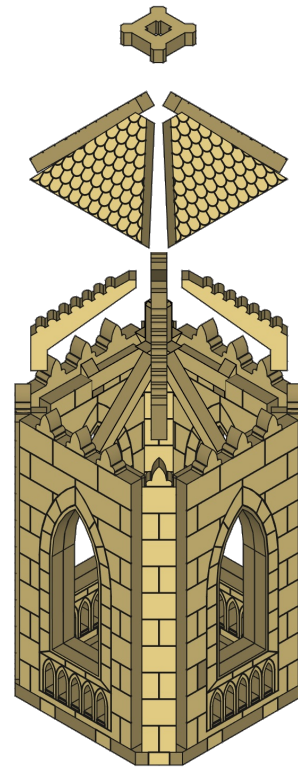
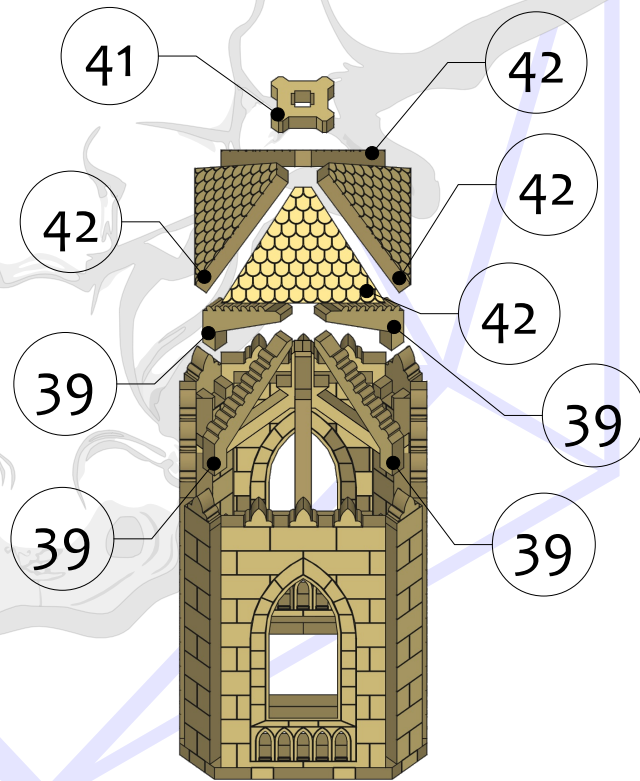
Part 3



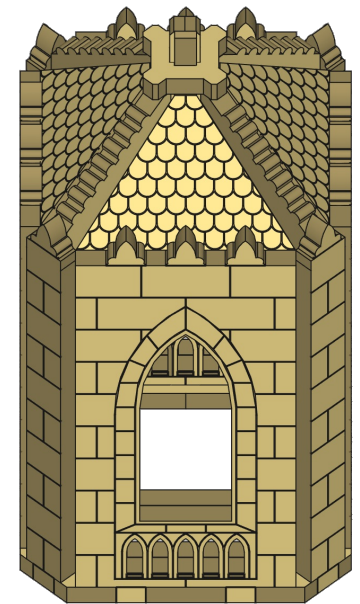
Gothic Cathedral

Rose Tower Roof - Bell tower

Part 4



45°

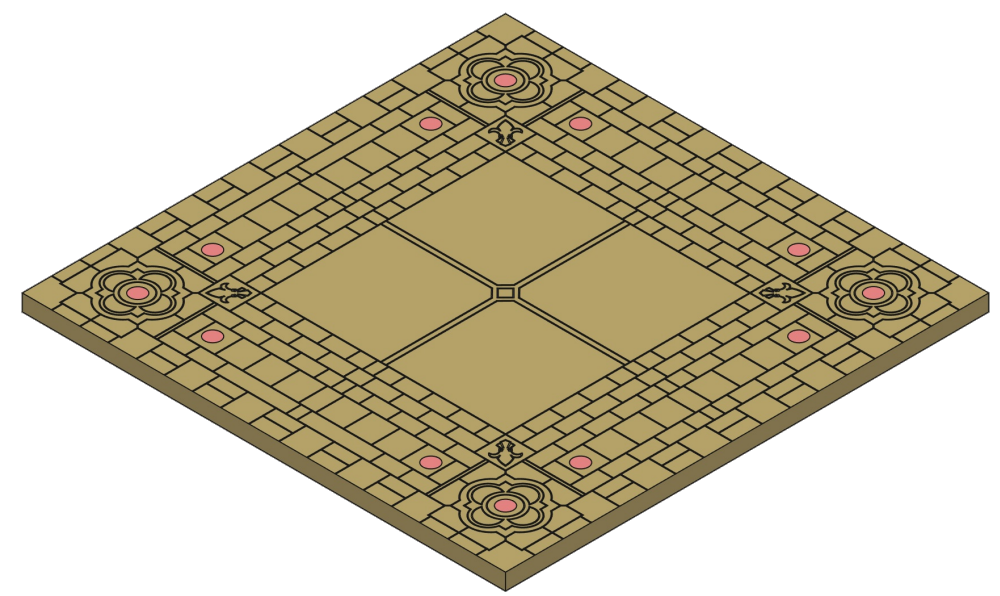
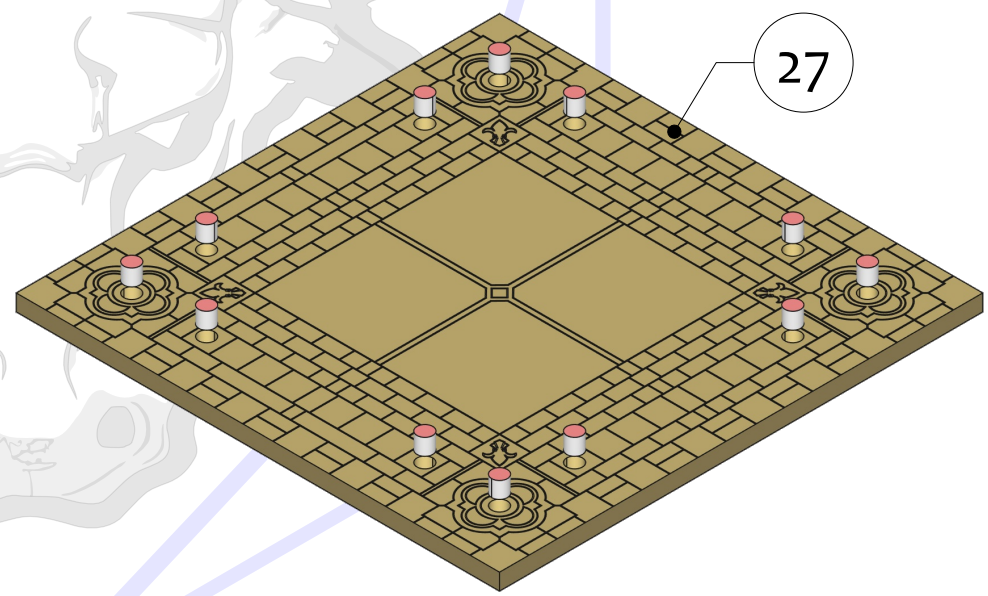


45°



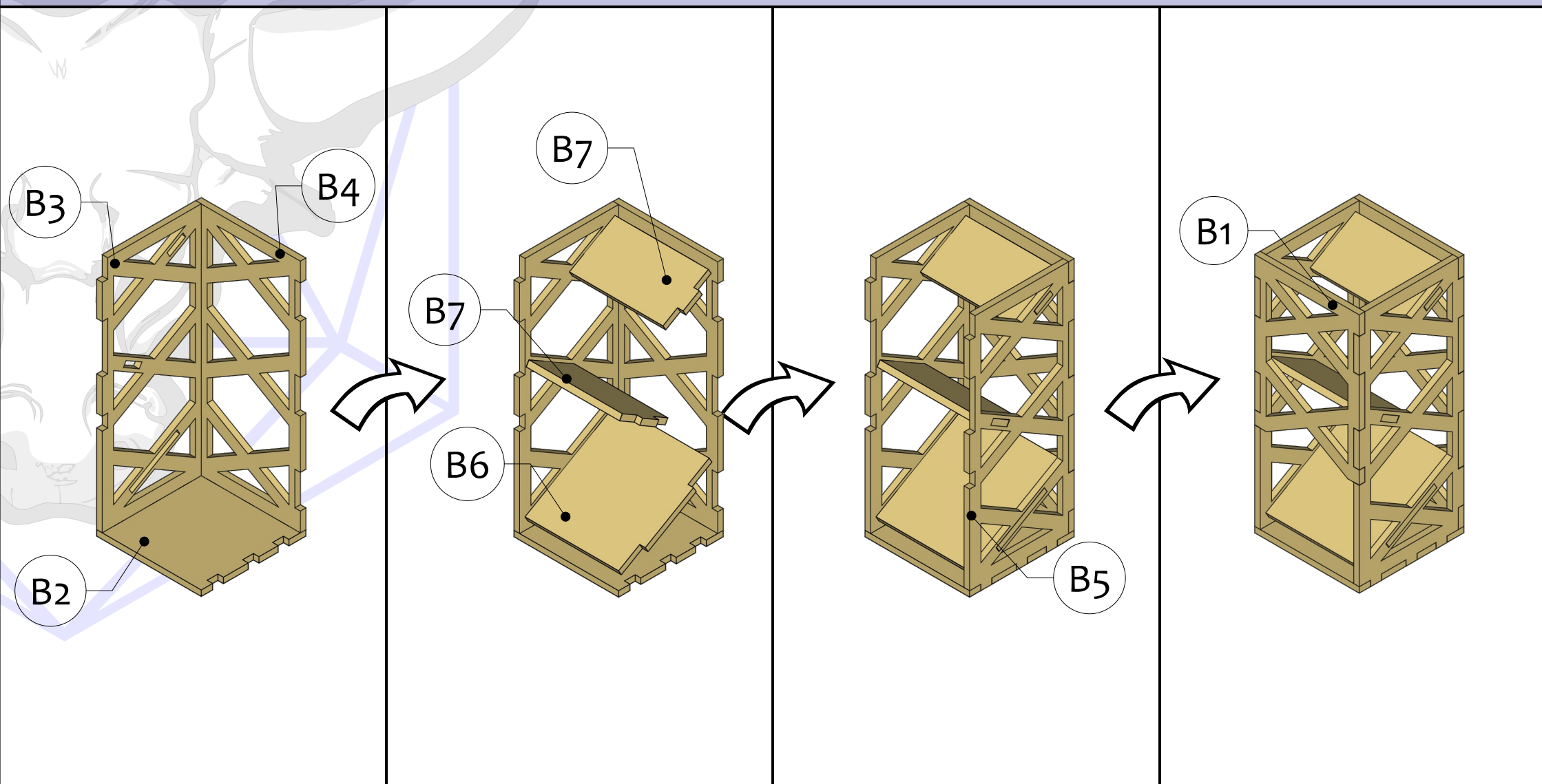
Gothic Cathedral

Square Tower Baseplate



Dice Tower

Baffle Insert



Gothic Cathedral – Rose Dice Tower (GC-K002)

Part List

Module	Part	Qty.	Piece #	Pages
Flat Faced Corner Column, 3x Tall (GC-MC001) x4	GC-CW1301	8	3	2
	GC-CB0201	4	4	2
	GC-CB0101	4	5	2
	GC-CS0002	8	6	2
	GC-CS0001	20	7	2
	GC-CW1302	4	1	3
	GC-CW1303	4	2	3
Double Window Wall, 2x Tall (GC-MW006) x3	GC-WW1206	2	8	4, 5
	GC-WW1207	1	9	4
	GC-WB0001	1	10	4
Flat Faced Wall, 1x Tall (GC-MW007)	GC-WB0001	1	10	6
	GC-WW1106	1	12	6
	GC-WW1105	2	13	6
Double Arch Wall, 1x Tall (GC-MW004) x3	GC-WW1104	1	11	7
	GC-WW1105	1	13	7
	GC-WB1102	1	14	7
	GC-WW1103	1	15	7
Rose Window, 1x Tall (GC-MW008)	GC-WB0001	1	10	8
	GC-WW1107	1	18	8
	GC-WW1108	2	19	8
Double Door, 1x Tall – V2- (GC-MW011)	GC-WD1102	1	16	9
	GC-WB1105	1	17	9
	GC-WD1101	2	20	9
	GC-WD0002	2	25	10
	GC-WD0003	4	43	10
Rose Tower Roof – Base (GC-MR003)	GC-RP0011	8	22	11
	GC-RP0003	8	26	11
	GC-RP0007	4	31	11
	GC-RP0008	4	32	11
	GC-RP0010	4	34	11
	GC-RB0003	12	21	12
	GC-RB0001	1	29	12
	GC-RB0002	1	28	13

Module	Part	Qty.	Piece #	Pages
Rose Tower Roof – Base (GC-MR003)	GC-RP0009	12	33	13, 14
	GC-RR0001	4	35	14
Rose Tower Roof – Bell tower (GC-MR004)	GC-TB0011	1	30	15
	GC-TB0013	4	37	15
	GC-TB0016	4	40	15
	GC-TB0012	4	36	16
	GC-TB0014	4	38	16
	GC-TB0017	1	23	17
	GC-TB0018	1	24	17
	GC-TB0015	4	39	18
	GC-TB0010	1	41	18
	GC-TB0009	4	42	18
Tower Base	GC-BS0001	1	27	19
Baffle Insert	BAFFLEFRONT	1	B1	20
	BAFFLEBASE	1	B2	20
	BAFFLERIGHT	1	B5	20
	BAFFLEBACK	1	B4	20
	BAFFLELEFT	1	B3	20
	BAFFLELARGE	1	B6	20
	BAFFLESMALL	2	B7	20
BS TOOL	BSTOOL	8	*	N/A

