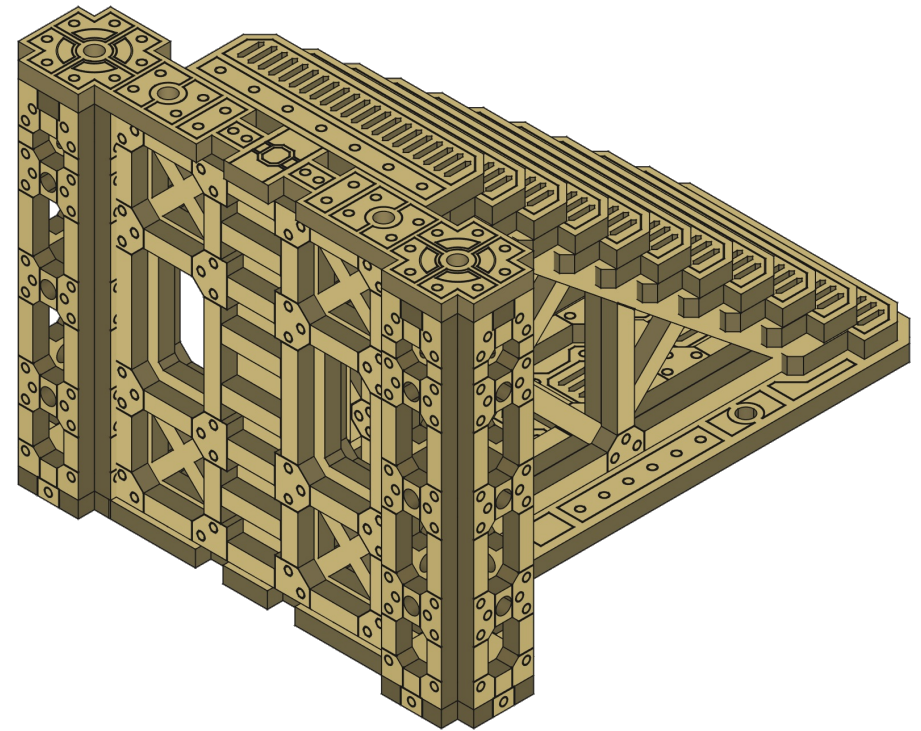
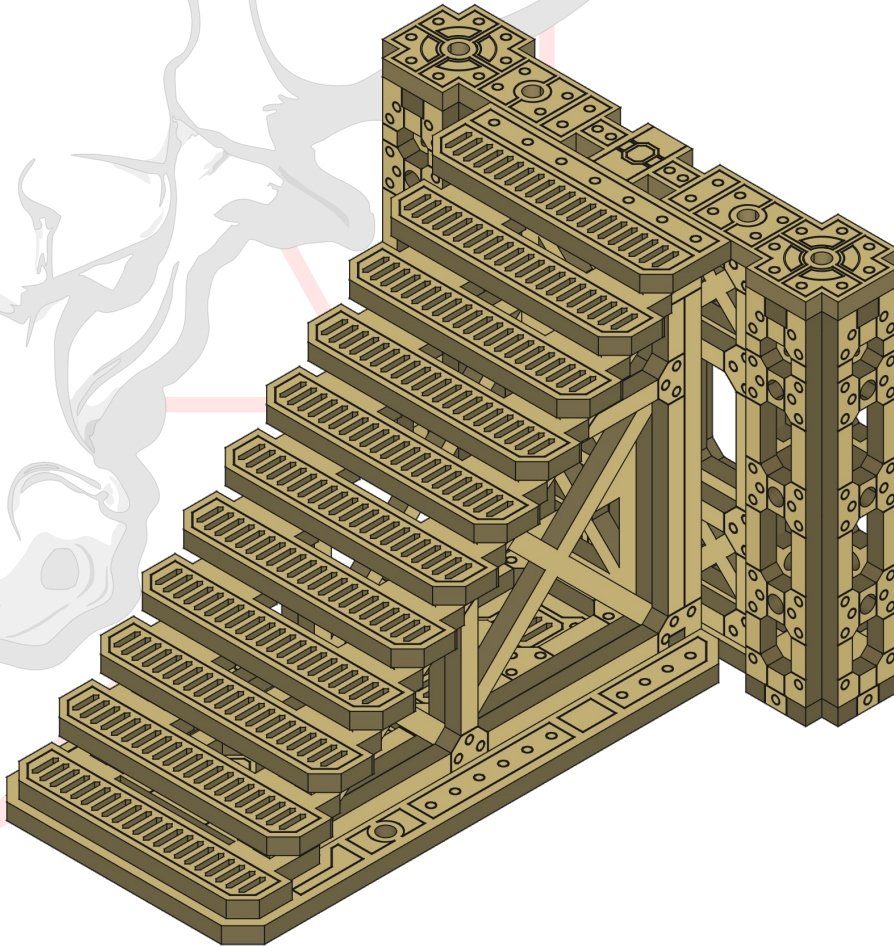


Industrial Complex

Industrial Stairs and Girder Wall



53 Pieces

Requires 58 3mm x 3mm neodymium magnets

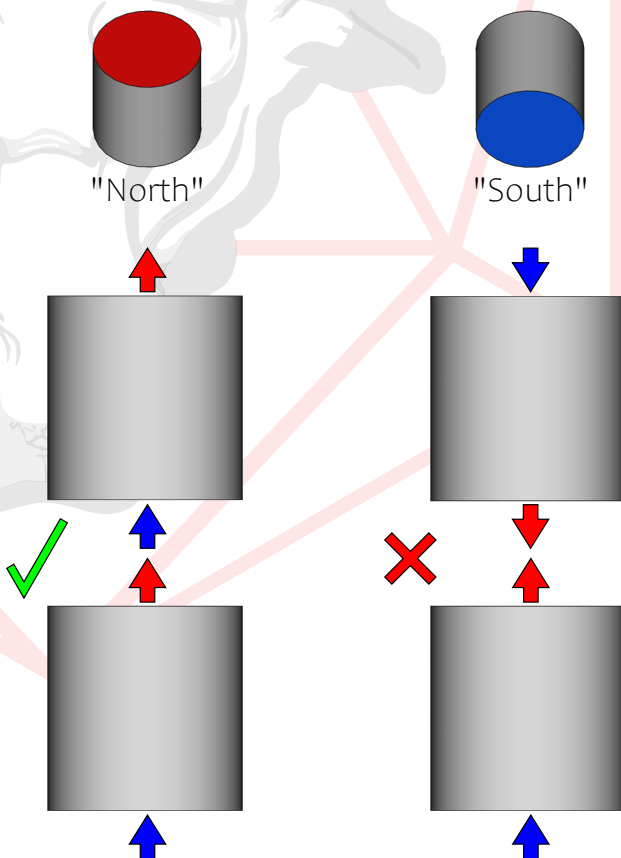


Magnets

Tips and Tricks for Your Success.

WHAT IS POLARITY?

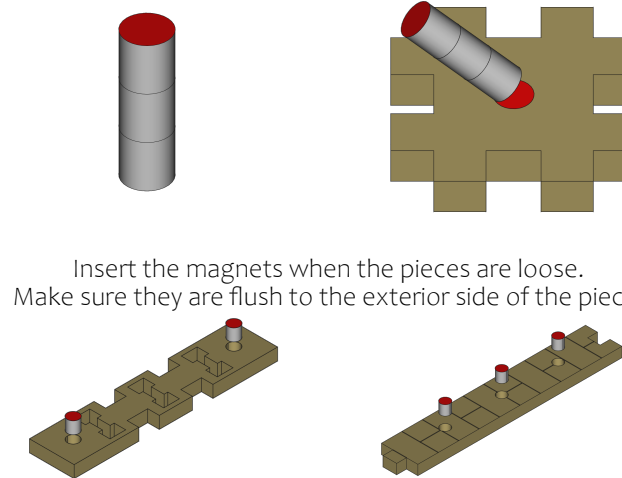
Magnets have a north (+) and a south (-) pole. Opposite poles attract each other and like poles repel. You can't easily tell which side is north or south. In these instructions, red is north and blue is south.



BE CONSISTENT

Because you won't really know which side is north or south, just pick a direction and stick with it. Make one piece and use that to be your guide for the rest.

Apply magnets in a stack.
This ensures they are facing the same direction.



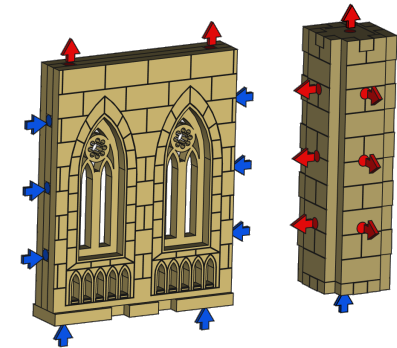
Insert the magnets when the pieces are loose.
Make sure they are flush to the exterior side of the piece.

Apply CA glue (super glue) to the back of the magnets.
This will prevent them from falling out or being pulled out.

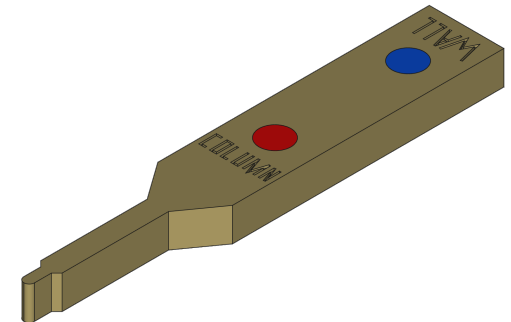


ALIGNMENT

After assembly is finished, the polarities should look like this.
Walls connect horizontally to columns.
Everything stacks vertically.



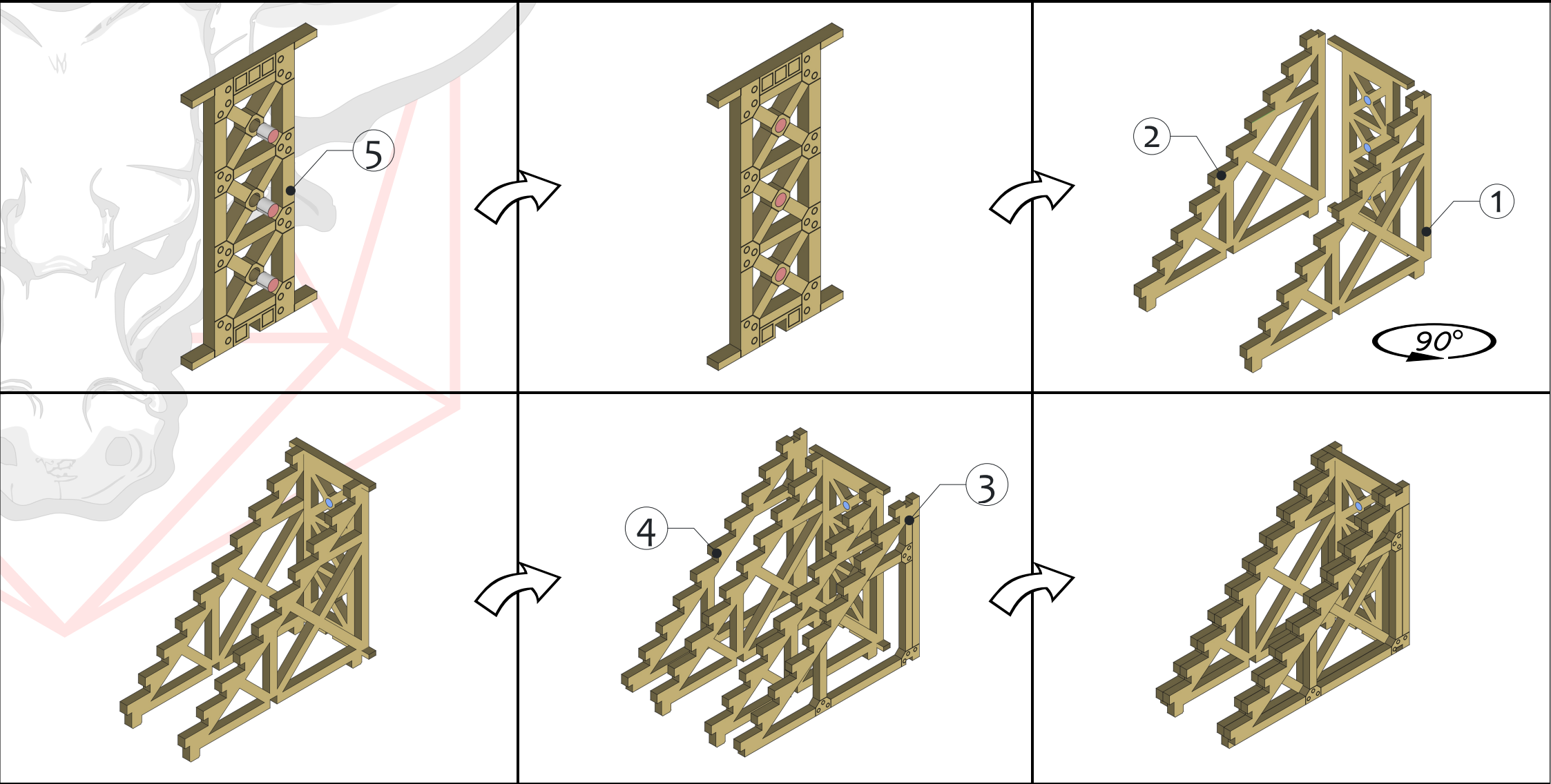
For your convenience, we provide a helper tool in every kit.
This "BSTOOL" has labels to help with aligning your magnets.
Use the tool as if it was a column or wall.
It can also be used to poke pieces out of their sheet or apply glue.



Industrial Complex

Industrial Stairs

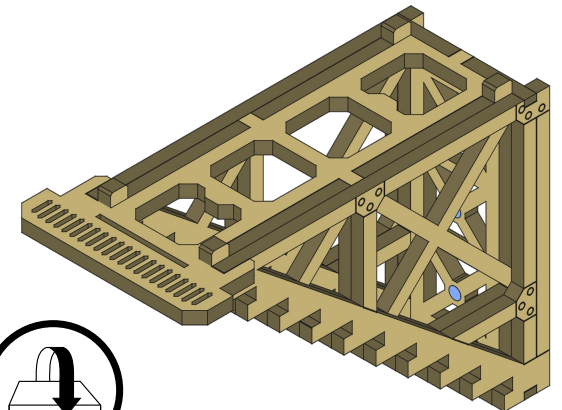
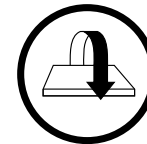
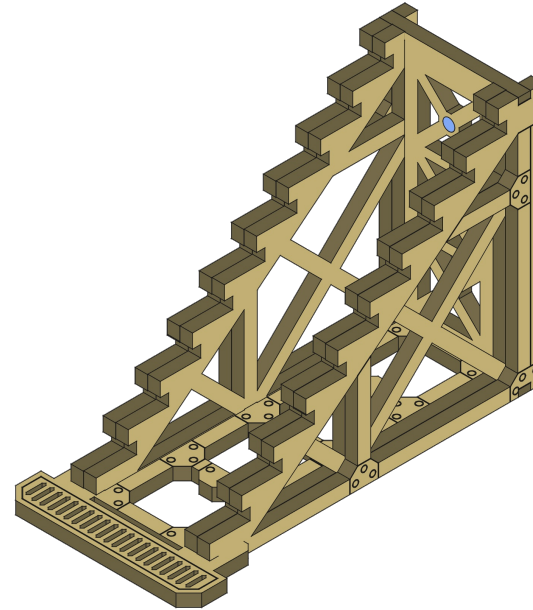
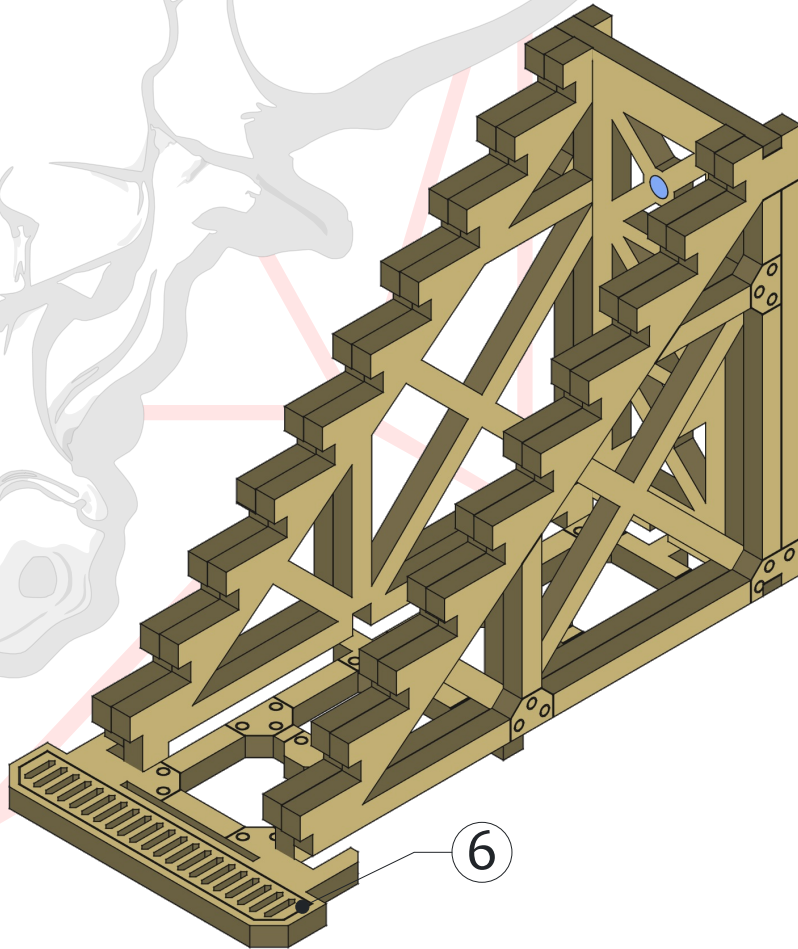
Part 1



Industrial Complex

Industrial Stairs

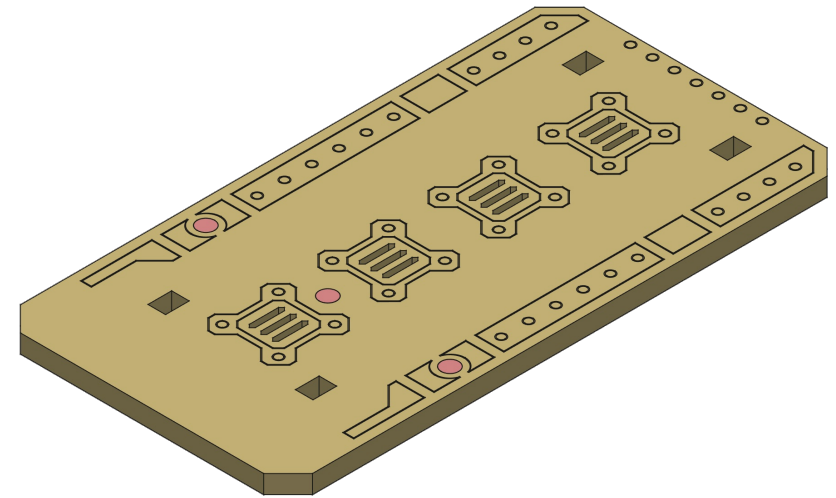
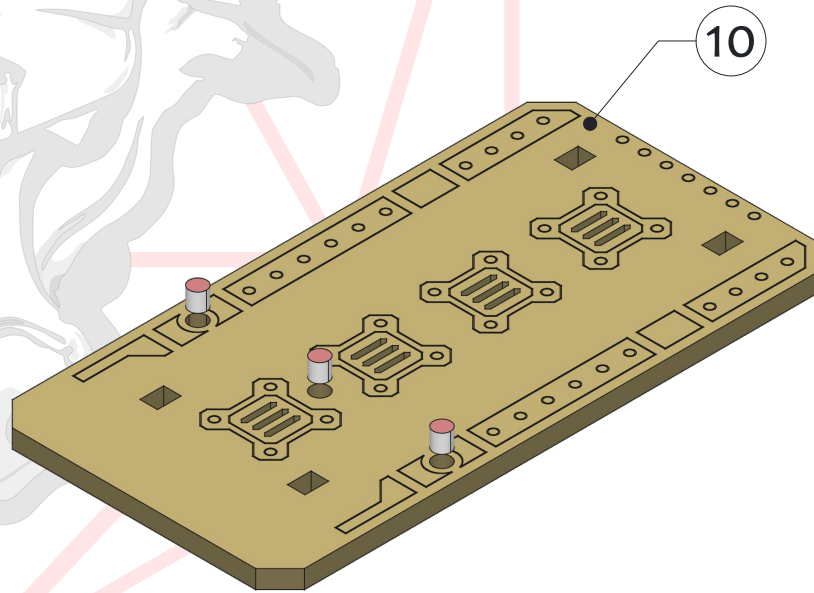
Part 2



Industrial Complex

Industrial Stairs

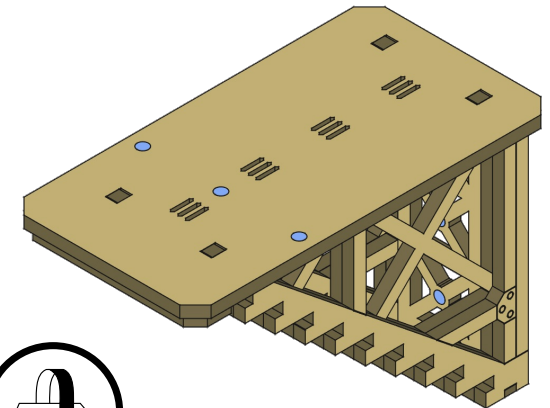
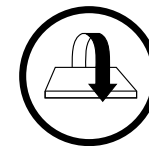
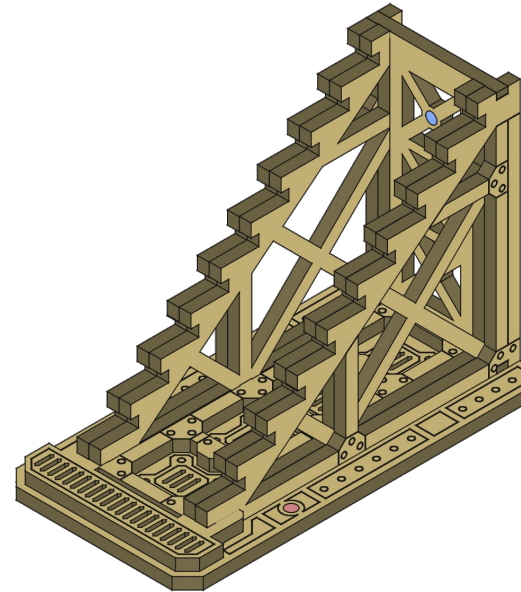
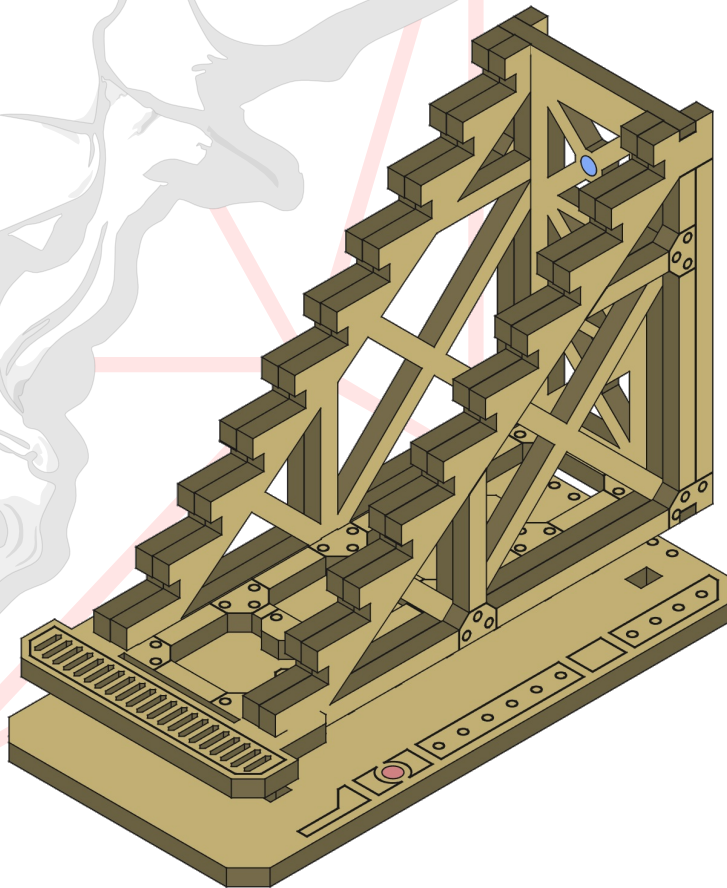
Part 3



Industrial Complex

Industrial Stairs

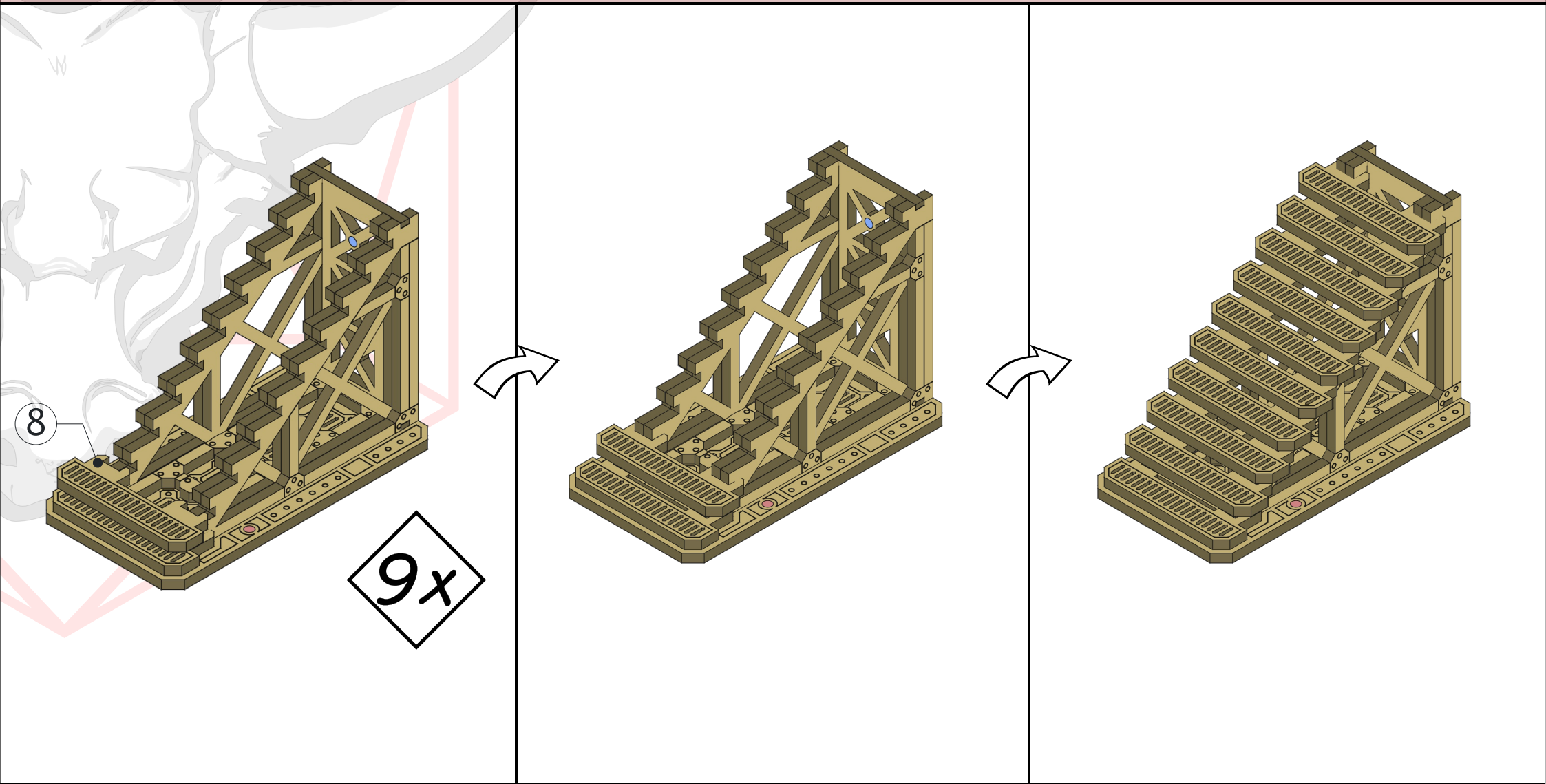
Part 4



Industrial Complex

Industrial Stairs

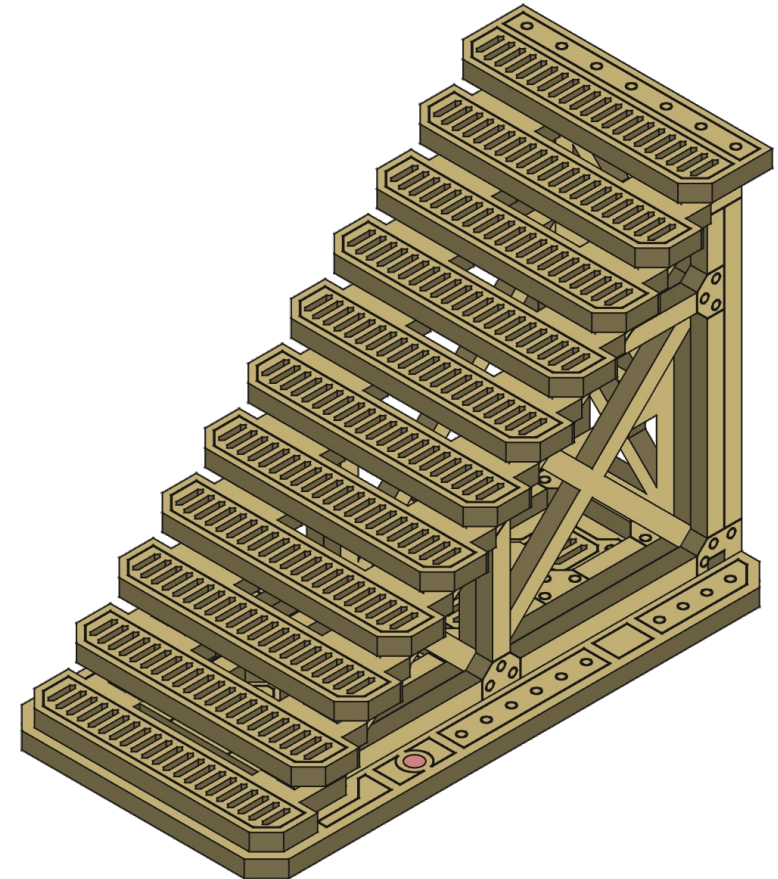
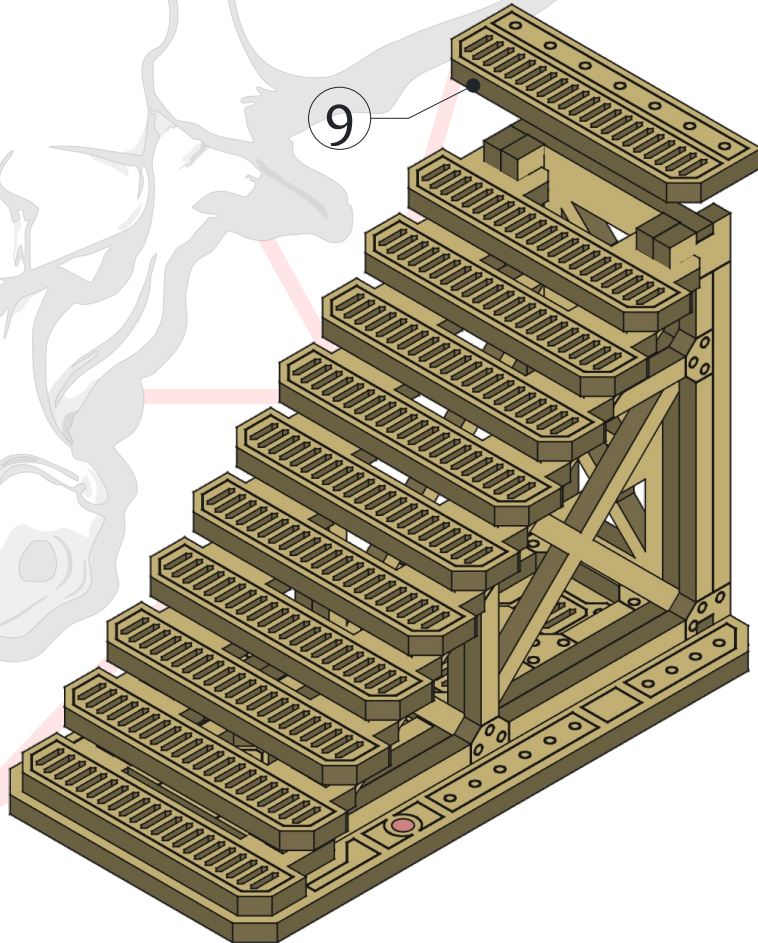
Part 5



Industrial Complex

Part 6

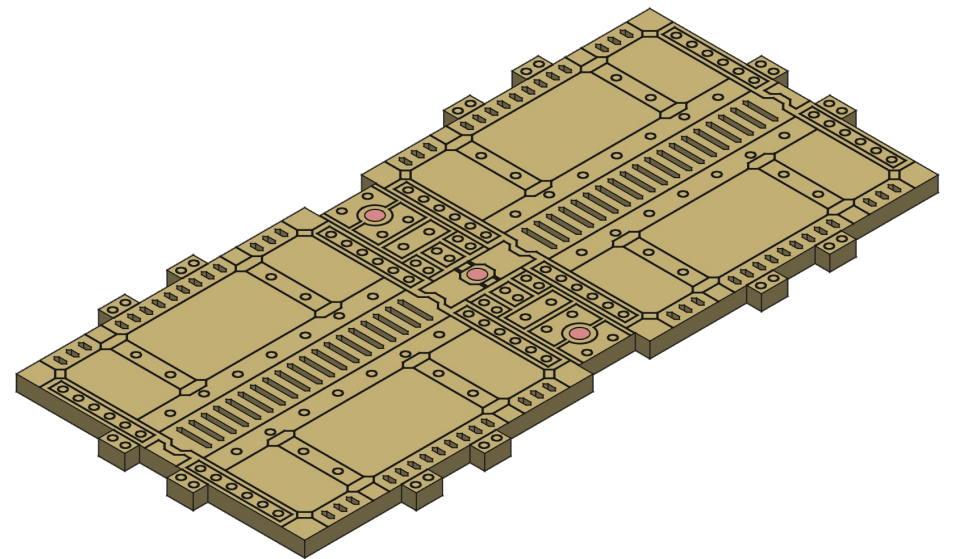
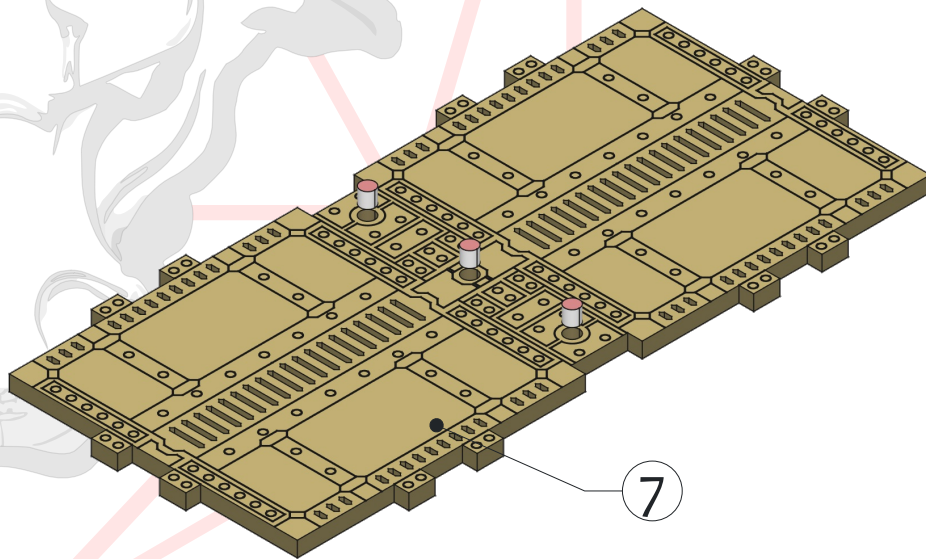
Industrial Stairs



Industrial Complex

Part 7

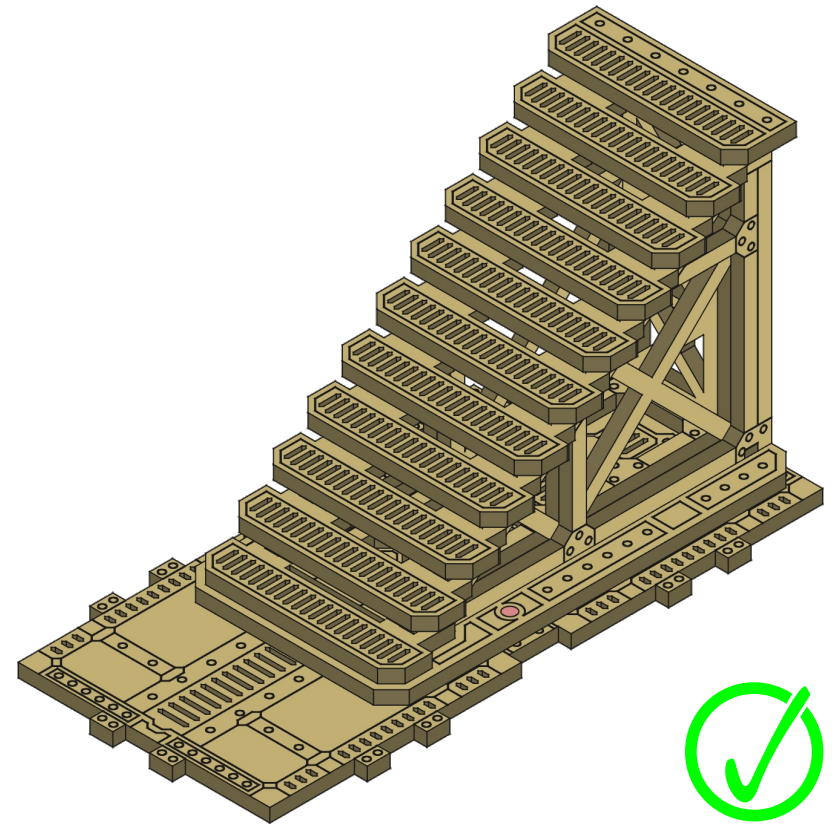
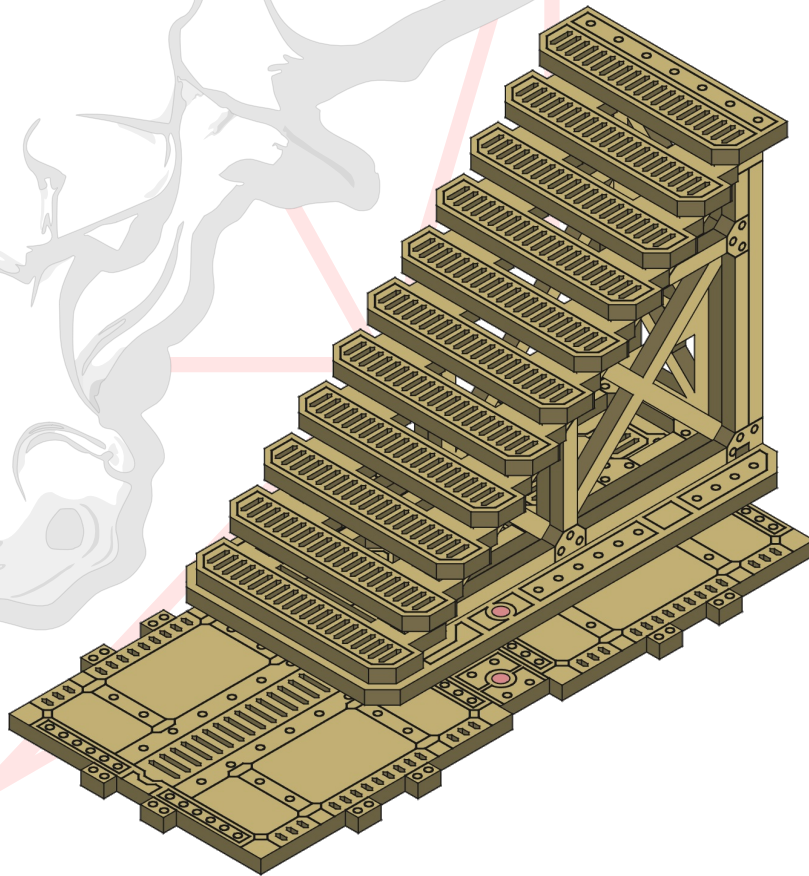
Industrial Stairs



Industrial Complex

Part 8

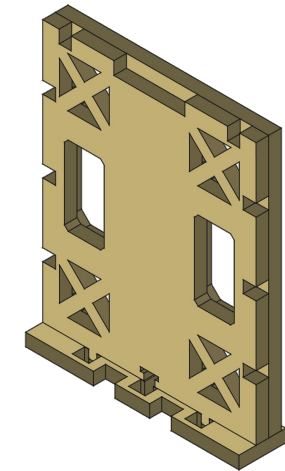
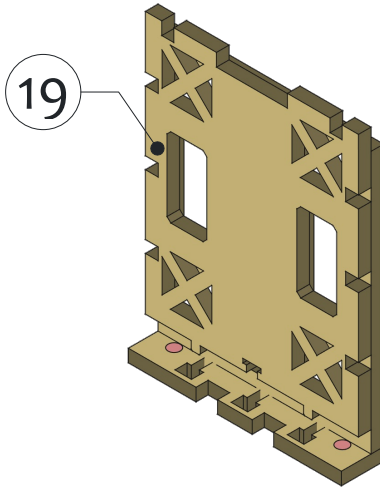
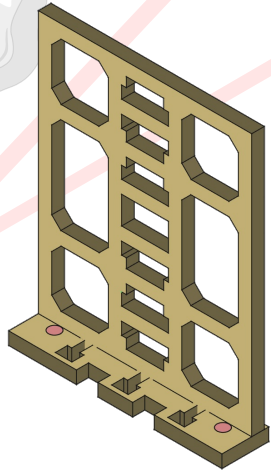
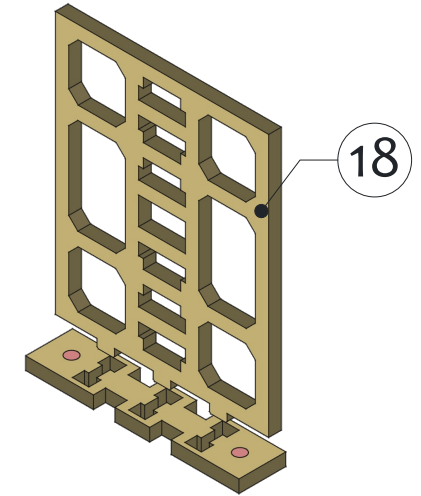
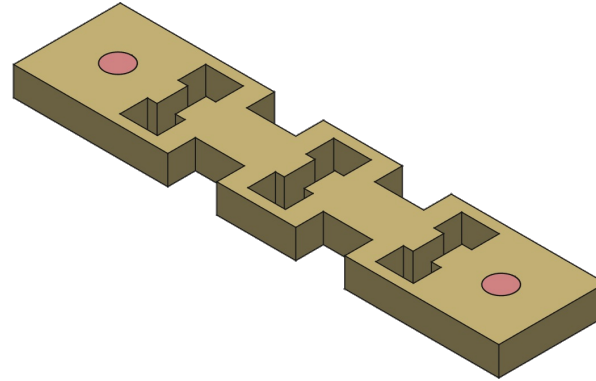
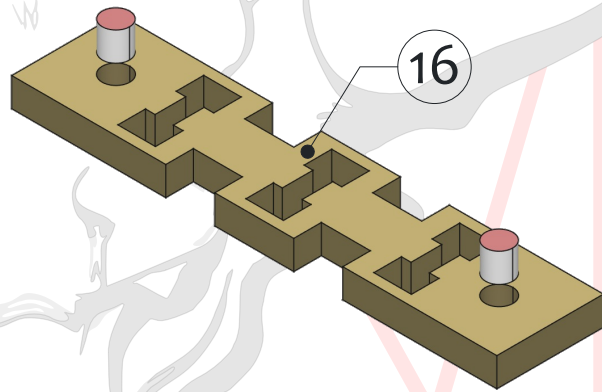
Industrial Stairs



Industrial Complex

Singled Sided Girder Wall

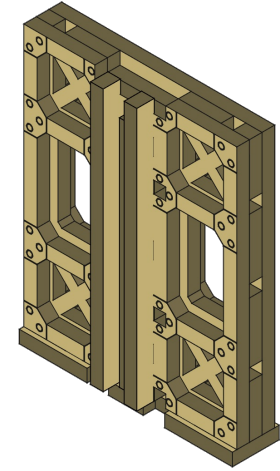
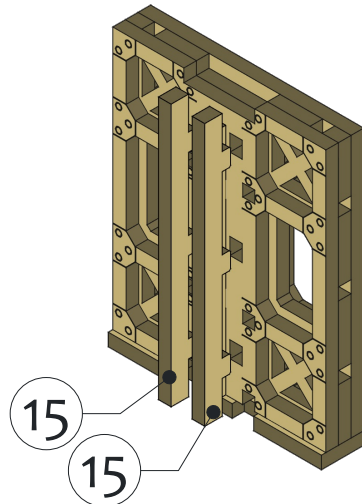
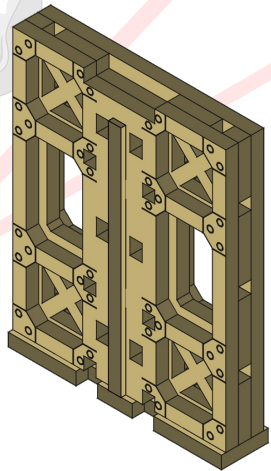
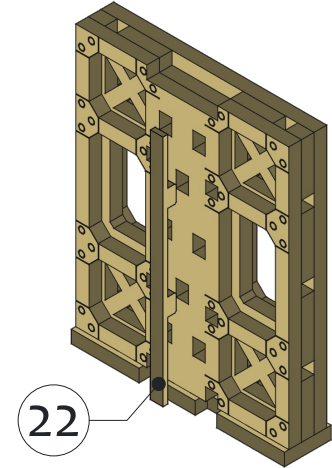
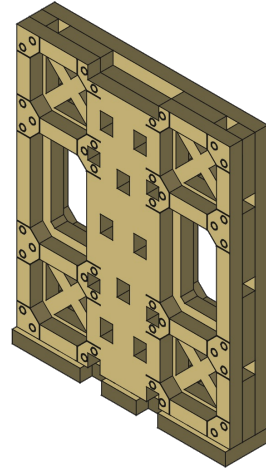
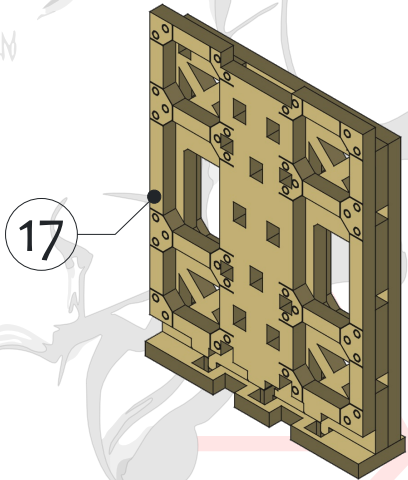
Part 1



Industrial Complex

Singled Sided Girder Wall

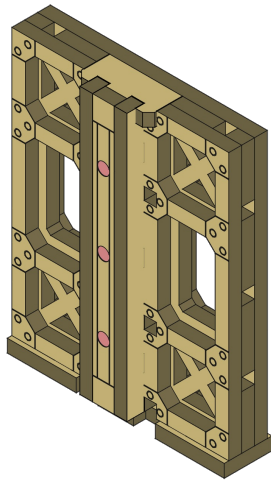
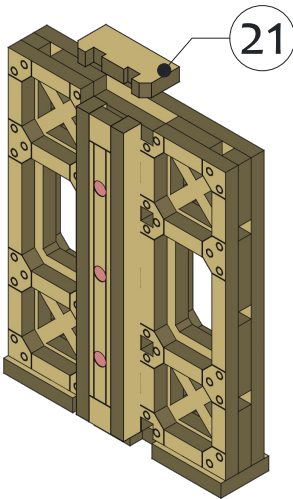
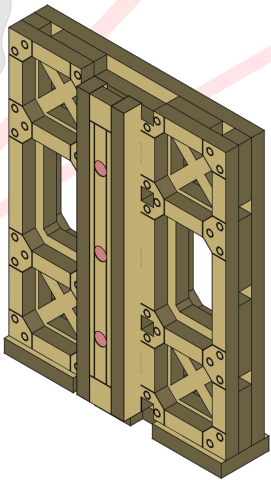
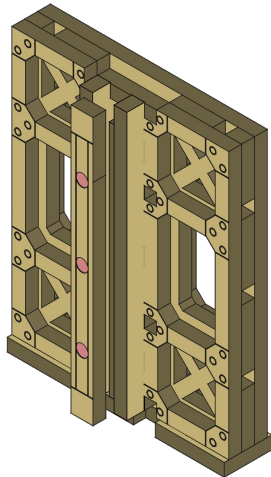
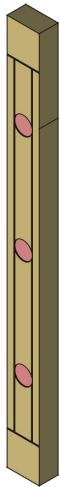
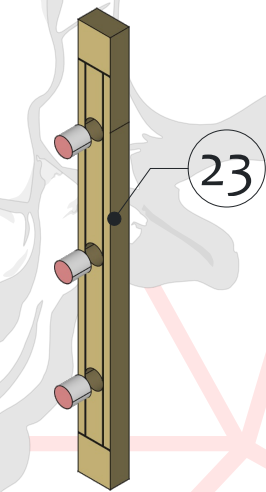
Part 2



Industrial Complex

Singled Sided Girder Wall

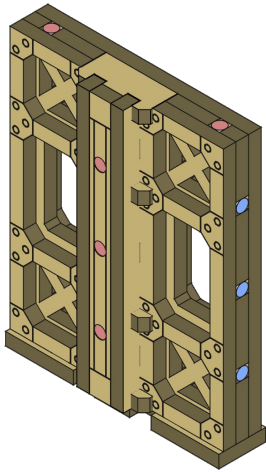
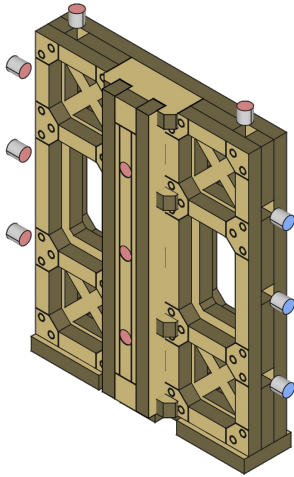
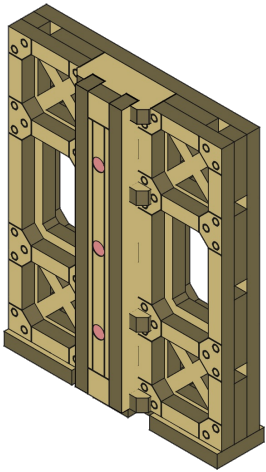
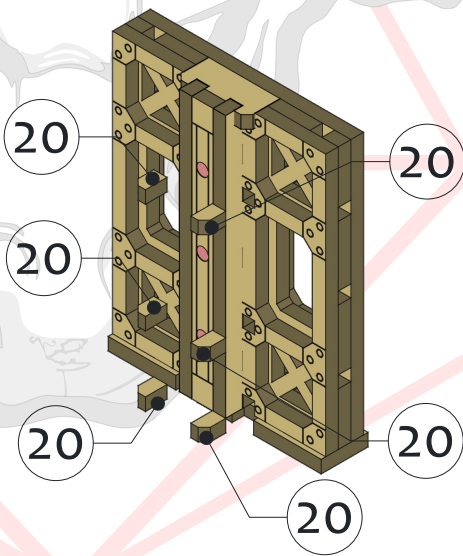
Part 3



Industrial Complex

Singled Sided Girder Wall

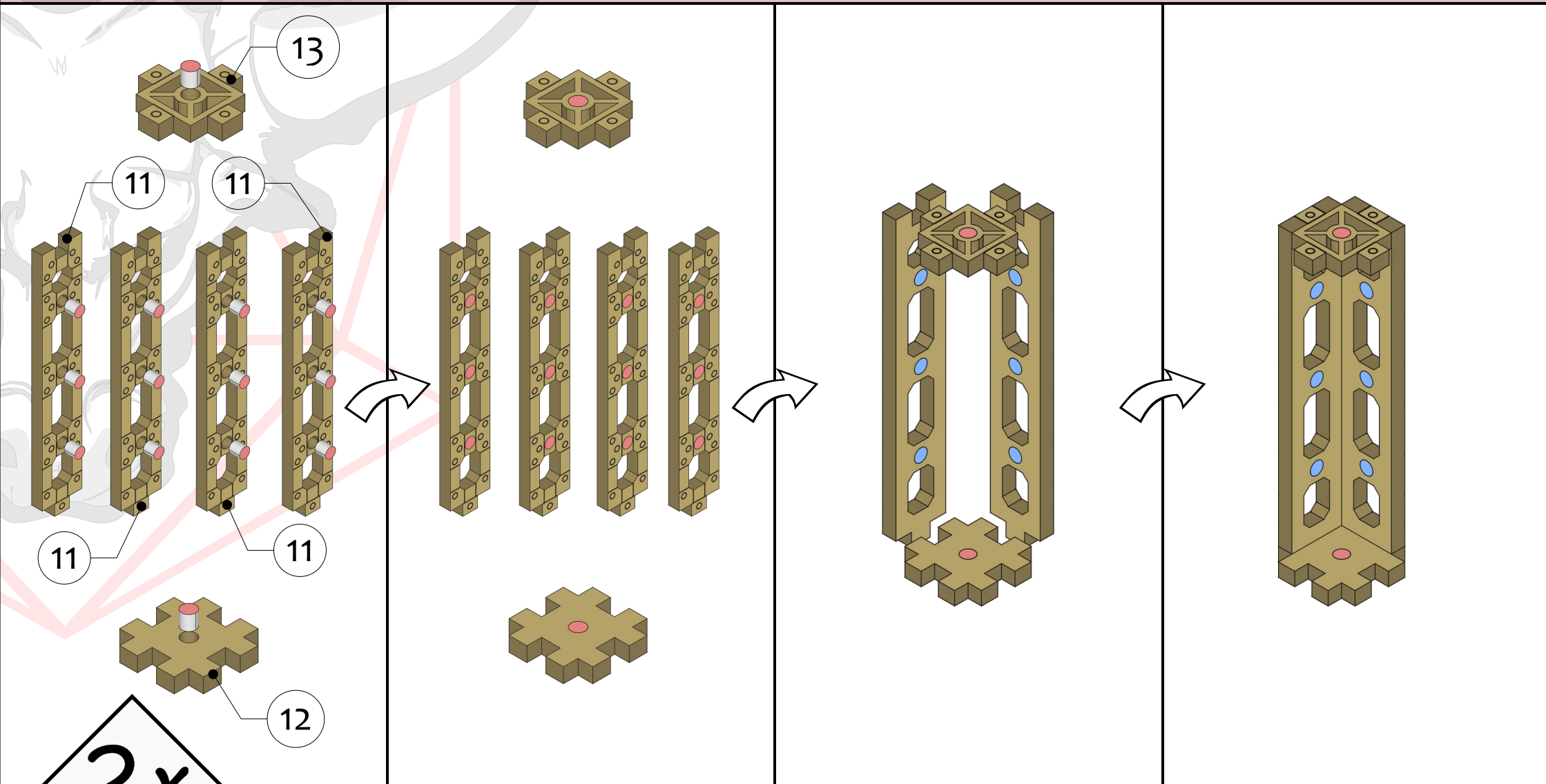
Part 4



Industrial Complex

Girder Column - Square, 1x tall

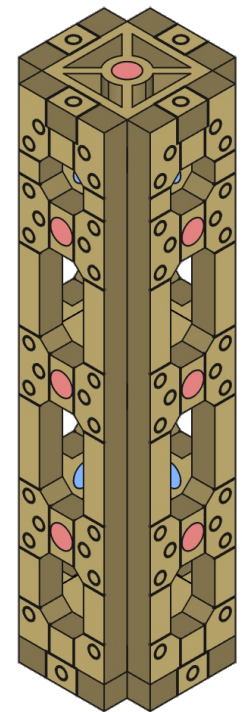
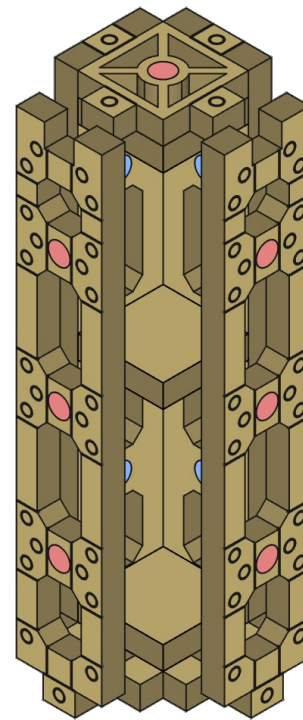
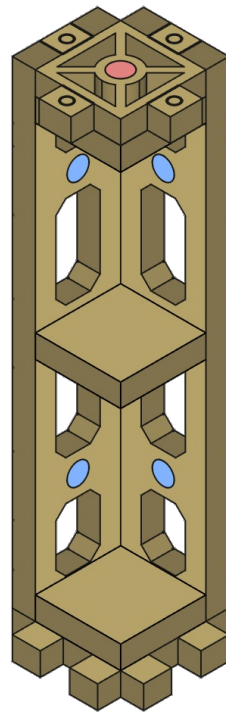
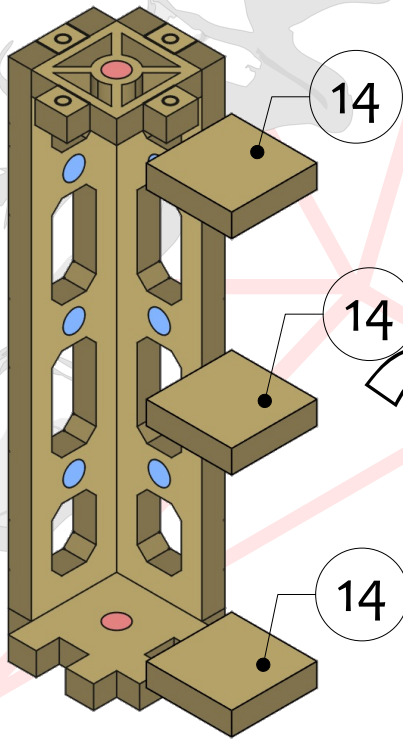
Part 1



Industrial Complex

Girder Column - Square, 1x tall

Part 2

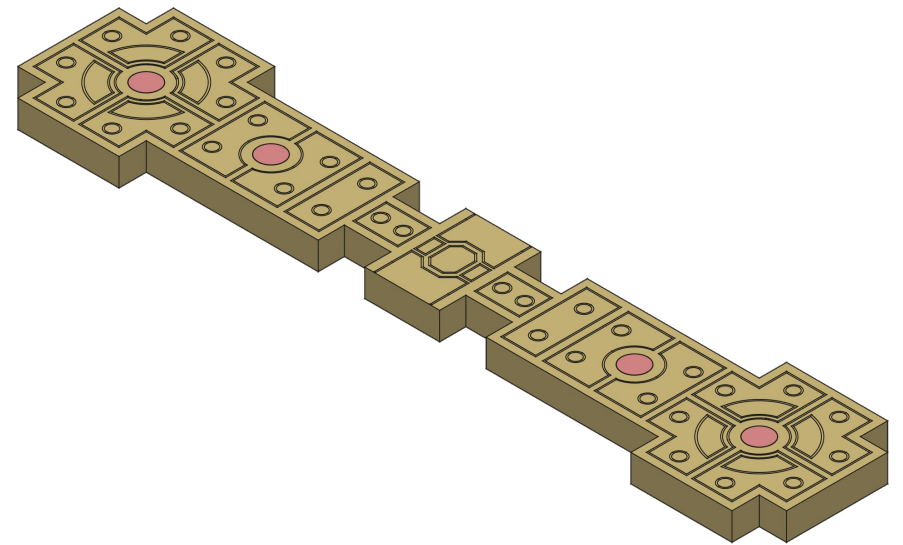
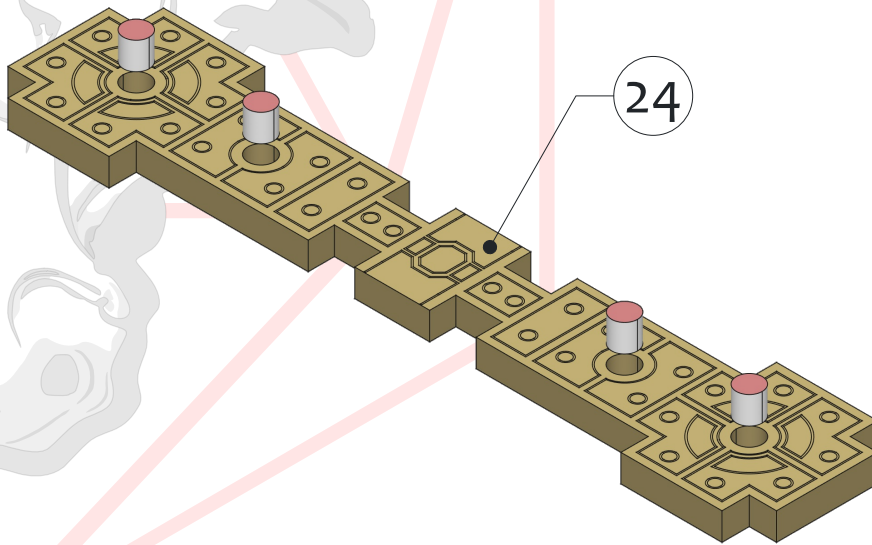


2x



Industrial Complex

Floor Brace - Straight



2x



Industrial Complex – Industrial Stairs and Girder Wall (IC-A002)

Part List

Module	Part	Qty.	Piece #	Pages
Industrial Stairs (IC-MS001)	IC-SA006	2	1,2	2
	IC-SA008	1	3	2
	IC-SA007	1	4	2
	IC-SA003	1	5	2
	IC-SA002	1	6	3
	IC-SA001	1	10	4
	IC-SA004	9	8	6
	IC-SA005	1	9	7
Rectangle Floor - Inset 2 (IC-FR002)	IC-FR002	1	7	8
Single Sided Girder Wall (IC-MW101)	IC-WB1101	1	16	10
	IC-WW1109	1	18	10
	IC-WW1110	1	19	10
	IC-WG1102	2	15	11
	IC-WW1111	1	17	11
	IC-WG1101	1	22	11
	IC-WG1104	1	21	12
	IC-WG1105	1	23	12
	IC-WG1103	6	20	13
Girder Column – Square (IC-MC002)	IC-CW0101	8	11	14
	IC-CB0101	2	12	14
	IC-CB0201	2	13	14
	IC-CS0001	6	14	15
Floor Brace – Straight (IC-FB001)	IC-FB001	2	24	16

