



INVESTMENT PROPERTY CREDIT TENANT-TITLEMAX FOR SALE



**2380 Center Point Parkway
BIRMINGHAM, AL 35215**

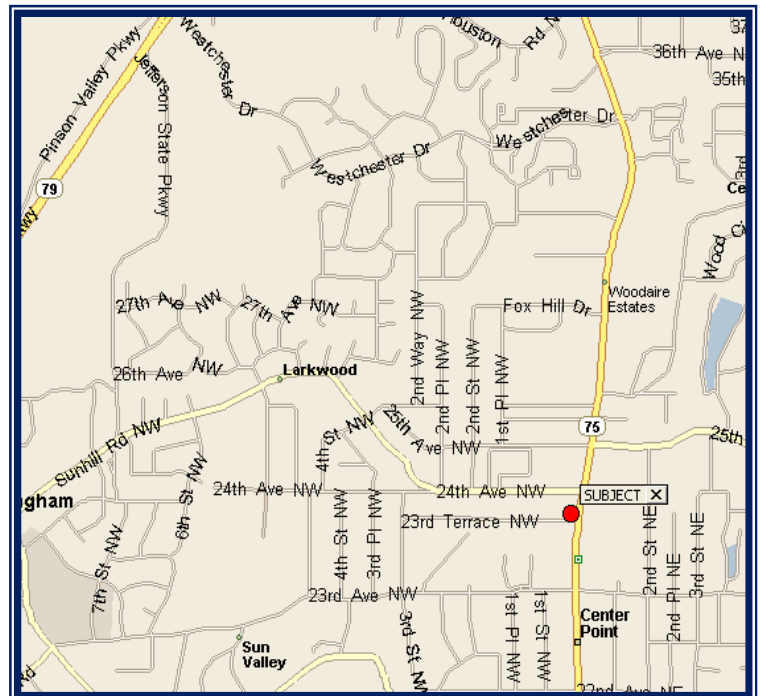
BUILDING: 2,685+/- sq. ft.

LOT 29,818 sq. ft.

BUILT: 1983

FEATURES: TitleMax
Tenant since May 2003
NNN-LL responsible for roof
2% annual increases
High traffic street
Prominent pole sign

PRICE: 8.0% Cap rate= \$ 534,700



Ira D. Levine, CCIM • 2159 Rocky Ridge Road, Suite 103 • Birmingham, Alabama 35216
Phone (205) 824-3697 • Fax (205) 822-8875 • idlevine@ccim.net