

PASCO ABRASIVES

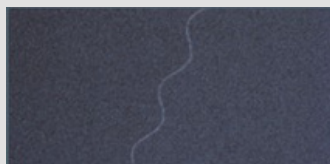
Capabilities



www.pascoabr.com

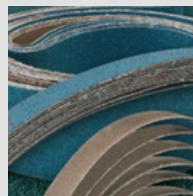
NARROW BELTS

- Widths starting at 1/4"
- Lengths up to 330"
- Joint options:
 - Straight
 - Angle
 - Pasco Lock (scallop)
 - Grain-side tape
- Tape colors: lavender, blue, red, yellow



Pasco Lock (scallop)

Available starting at 1" width



X-long Narrow Belts

up to 330"

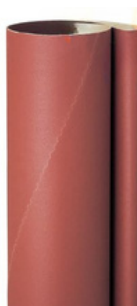


1/4" Narrow Belts

for File belt machines

WIDE BELTS & SECTIONED

- Widths up to 157"
- Segmented/sectioned belts available
- Custom lengths per customer specs
- Joint types:
 - Straight
 - Angle
 - Pasco Lock (scallop)
 - Grain-side tape
- Reinforced with tape (lavender, blue, red, yellow)



Paper

A/O, S/C, Zirc



Cloth

A/O, S/C, Zirc, Cer



Cork

without abrasive or with S/C

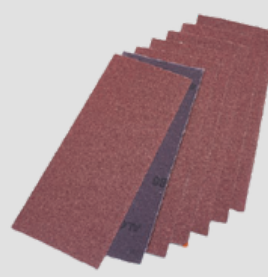
*FILM A/O also available

SHEETS - ROLLS

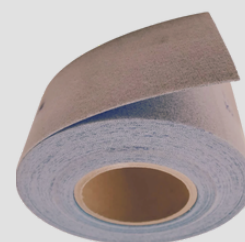
- Sheets available:
 - 4.5" x 5.5"
 - 2.75" x 14"
 - Custom sizes on request
- Rolls available:
 - Widths from 1" to 50"
 - Lengths up to 100 yards



Paper



Cloth



Cloth with velcro

DISCS

- PSA, PSA on roll (5-6"), VEL (limited), and Plain
- Orbital discs: 2"-9", in PSA and VEL formats
- 5", 6", 8" discs: 5-hole, 8-hole, multi-hole
- Grinder discs: 4.5"-8", built for heavy use
- Hole sizes: 5/8", 7/8", 1", or 7/8" with 4, 8, 16 slots
- 4.5", 5" holes: 5/8", 7/8", and 7/8"-16 slot
- 6", 7", 8" support all hole options
- Oversize discs up to 36" available on request



Discs with tab (DWT)



Discs on roll (DOR)



**Discs with holes
for VAC sanders**

Materials available

All F, G, J, X, XX, XY and MET backing weights can be PSA backed



www.pascoabr.com

Aluminum Oxide (AO) options:

Code	Backing material	Backing weight	Backing type	Coat type
AO-D/C-OP	Paper GOLD	D/C	Plain	Open
AO-D/C-OP-PSA	Paper GOLD	D/C	PSA	Open
AO-D/C-OP-VEL	Paper GOLD	D/C	VEL	Open
AO-F-OP	Paper	F	Plain	Open
AO-FILM-OP	Film	FILM	Plain	Open
AO-FILM-OP-PSA	Film	FILM	PSA	Open
AO-FILM-OP-VEL	Film	FILM	VEL	Open
AO-J-CL	Flex Cotton Cloth	J	Plain	Closed
AO-J-OP	Flex Cotton Cloth	J	Plain	Open
AO-X-CL	Stiff Cotton Cloth	X	Plain	Closed
AO-X-OP	Stiff Cotton Cloth	X	Plain	Open
AO-XX-CL	Stiff Cotton Cloth	XX	Plain	Closed
AO-XY-CL	Poly-cotton Cloth	XY	Plain	Closed
AO-XY-OP	Poly-cotton Cloth	XY	Plain	Open
AO-Y-CL	Polyester cloth	Y	Plain	Closed

Silicon Carbide (SC) options:

Code	Backing material	Backing weight	Backing type	Coat type
SC-F-CL	Paper	F	Plain	Closed
SC-MET-PAP	Paper	MET	Plain	Closed
SC-MET-PAP-PSA	Paper	MET	PSA	Closed
SC-XY-CL	Poly-cotton cloth	XY	Plain	Closed
SC-Y-CL	Polyester cloth	Y	Plain	Closed
SC-SURFC-CRS	Non-woven	SURFC	Plain-VEL	
SC-SURFC-MED	Non-woven	SURFC	Plain-VEL	
SC-SURFC-VF	Non-woven	SURFC	Plain-VEL	
CORK-Y	Polyester cloth	Y	Plain	

Zirconia (ZIR) and Ceramic (CER) options:

Code	Backing material	Backing weight	Backing type	Coat type
ZIR-G-CL	Paper	G	Plain	Closed
ZIR-X-CL	Stiff Cotton Cloth	X	Plain	Closed
ZIR-XY-CL-GA	Poly-cotton Cloth	X	Plain	Closed
ZIR-Y-CL	Polyester cloth	Y	Plain	Closed
ZIR-YY-CL-DRY	Polyester cloth	Y	Plain	Closed
ZIR-YY-CL-WET	Polyester cloth	Y	Plain	Closed
CER-Y-CL	Polyester cloth	Y	Plain	Closed



Abrasive grains



Aluminum Oxide (AO)

- Tough, wedge-shaped abrasive for fast cutting.
- Ideal for strong metals and hard woods.
- Resists fracturing; great toughness.
- Typically brown in color.



Silicon Carbide (SC)

- Extremely hard with sharp, sliver-like grains.
- Ideal for nonferrous metals, glass, wood, and plastics.
- Used for finishing coatings and stainless steel.
- Typically black in color.



Zirconia Alumina (ZIRC)

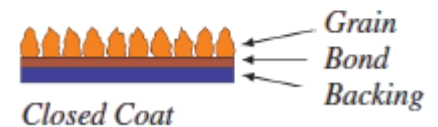
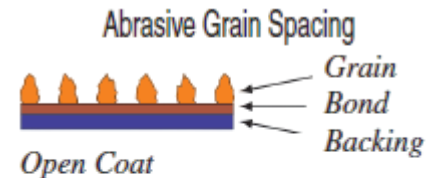
- Blocky, self-sharpening grain with long life.
- Great for heavy metal grinding and wood planing.
- Controlled fracturing reveals new cutting edges.
- Typically blue or green; grits 24–150.



Ceramic (CER)

- Very hard, sharp, and durable abrasive.
- Self-sharpening for consistent cutting performance.
- Ideal for precision grinding and tough metals.
- Typically red or pink in color.

Coat type



Grits	
Check availability per CODE	
16	280
24	320
36	360
40	400
50	500
60	600
80	800
100	1000
120	1200
150	1500
180	2000
220	2500
240	3000

Backing weight

Material	Backing Weight	Features
CLOTH	J	Most flexible and lightest; for contour grinding
	X, XX	Heavier; for general use where flexibility is less critical
	XY, Y	Extremely strong, waterproof, used in severe/wide belt grinding
PAPER	A-G	A is lightest, G is heaviest
FILM	FILM	Excellent durability and tear resistance. Fine finishing and consistent results.

COATED ABRASIVES CROSS REFERENCE CHART

PASCO ID	3M	Norton	VSM	Klingspor	Deerfos	Hermes	Sunmigh	Fujistar
AO-D/C-OP	236U	211/213	KP31	PL31/PS33		VC151		
AO-D/C-OP-PSA	236U	211/213	KP31	PL31/PS33				
AO-D/C-OP-VEL	236U HOOKIT	211/213	KP31	PL31/PS33		VC151V		
AO-F-OP	216UZ/265UZ	H248/258	KP520F	PS20/23			B317 / B347	
AO-FILM-OP	366L				SA331	FC161/164	Q711T	
AO-FILM-OP-PSA	366L				SA331	FC161/164	Q711T	
AO-FILM-VEL	366L HOOKIT				SA331	FC161/164	Q711T VEL	
AO-J-CL	201E	R201	KK511F,J	LS309J	JA165	RB317J		
AO-J-OP			KK504F	LS319J	JW342	RB306J	K35F	
AO-X-CL	214D/E	R228	KK711X	CS310X	XA167	RB346X	R145	
AO-X-OP	240D	R215/232	KK504X	CS311X	XA345	RB316XOP	K35	SWX
AO-XX-CL	248D	R249	KK711X	CS412X	XA911	RB346X	R145	
AO-XY-CL	361F	R247/249	KK711Y	CS410/412Y	PA631		R192 / P355	
AO-XY-OP	270D	R215	KK524X/7	CS341X/Y	PA343	RB316XOP	W25	
AO-Y-CL	361F	R247/249	KK711Y	CS410/412Y	PA631			
CER-Y-CL	777F 967F 977F	R980	XK870K	CS612YY	PS999	CR467		
CORK-Y					PK777	RB555X		
SC-F-CL						BS118		SP40F
SC-SURFC-CRS	SC CRS							
SC-SURFC-MED	SC MED							
SC-SURFC-VF	SC VFN							
SC-XY-CL	461F	R422	CK71X	CS321X	PC221	RB315XY	S181 / P548W	
SC-Y-CL	461F	R422	CK71X	CS321X	PC221	RB315XY	S181 / P548W	
ZIR-G-CL								
ZIR-X-CL			ZK713T	CS411X	XZ677			
ZIR-XY-CL-GA	577F	R823P	KK815Y	CS409Y	PZ528	RB486Y	R203	
ZIR-Y-CL		R823P	KK715X/716Y	CS411Y/408Y	PZ628	RB484Y	R205	
ZIR-XY-CL-GA					PZ528		R203	
ZIR-Y-CL					PZ628		R205	

This cross-reference chart is provided for general reference only. While we have made every effort to align comparable products across coated abrasives manufacturers, variations in grain, backing, bonding, and performance characteristics do exist and may be significant. **We strongly recommend evaluating products under actual operating conditions before final selection.**