



**Minister's Order Pursuant to section 35(1) of "The Highways and Transportation Act, 1997"**

Pursuant to section 35(1) of "*The Highways and Transportation Act, 1997*" it is hereby ordered that, effective as stated in this Order, **at 12:01 am, Friday April 24, 2026** or where it has been stated **effective immediately**. Vehicles other than those exempted in Part II, section 3 (2) and 3 (5) of "*The Vehicle Weight and Dimensions Regulations, 2010*", shall be restricted as follows:

**Steering Axle**

- 10.0 kg per mm (560 pounds per inch) width of tire (manufacturer's stamped dimension) to a maximum of
- 5,500 kg on the steering axle for a truck or truck tractor equipped with a single steering axle.
- 11,000 kg on the steering axle group for a truck or truck tractor equipped with a tandem axle steering group.

**Other Axles**

- 6.25 kg per mm (350 pounds per inch) width of tire (manufacturer's stamped dimension) to a maximum of:
- 1,650 kg (3,638 pounds) per tire, or
- 2,630 kg per tire for axles equipped with single tires with a width of 445 mm or greater.

This order does not permit the weight on any axle, axle group or vehicle from exceeding the maximum weight prescribed in the "*The Vehicle Weight and Dimension Regulations, 2010*" for that axle, axle group or vehicle.

**The restriction does not apply to:**

- Emergency vehicles,
- Ministry of Highways vehicles and municipal maintenance equipment when conducting maintenance or accessing sites on or along the restricted highway,
- SaskPower, SaskEnergy and SaskTel vehicles when accessing sites along the restricted route,
- Recreational vehicles,
- Buses,
- Farm Equipment operated or towed,
- Vehicles directly crossing a Provincial Highway at an intersecting public highway or private road.

Please note that some provincial highways and bridges are subject to special reduced or restricted weights and some are for specific periods of the year, some for precise temperatures. A detailed description of these special restrictions is listed on the last four pages of this Order.

The following Rural Municipality **will be removed** from Spring Road Restrictions **effective immediately** upon posting of this Order.

No. 163 WHEATLANDS

Signed on behalf of the Minister on this 21<sup>st</sup> day of April 2026.



Lana Eering  
Government of Saskatchewan  
Ministry of Highways  
Manager, Highway Hotline/Emergency Planning Officer

**The following Provincial Highways are subject to Spring Road Restrictions.**

- No. 2 From U.S. Border to St. Victor Access
- No. 3 From Manitoba Border to Hudson Bay
- No. 4 From Jct Hwy 55 to Jct Hwy 224
- No. 5 From Manitoba Border to Jct Hwy 57
- No. 8 From Norquay to 14.6 km. South of Forest Boundary (SPECIAL RESTRICTIONS -8,000kgs from Midnight Mar. 14 to Midnight Nov. 15)
- No. 9 From Hudson Bay to Ruby Lake Access
- No. 13 Cadillac to Junction 37
- No. 13 North Jct Hwy 21 to Alberta Border
- No. 15 From Jct Hwy 16 to Jct Hwy 9 (SPECIAL RESTRICTION – 8,000kgs)
- No. 15 From Jct Hwy 2 to Farrerdale
- No. 15 From Farrerdale to Jct Hwy 11
- No. 18 From Jct Hwy 6 to East Jct Hwy 36
- No. 18 From Jct Hwy 35 to Jct Hwy 6
- No. 18 From West Jct Hwy 36 to Rockglen
- No. 18 From Ponteix Grid to Jct. 13 at Robsart
- No. 18 From Jct Hwy 2 to Ponteix Grid
- No. 19 From East Jct Hwy 42 to Elbow Access
- No. 19 From Jct Hwy 18 to North Jct Hwy 363
- No. 20 From Middle Lake to Jct Hwy 320
- No. 20 From 1.6 km North of Pilger to Middle Lake
- No. 20 From Jct Hwy 320 to Jct Hwy 3
- No. 22 From Earl Grey to Jct Hwy 20
- No. 21 U.S. Border to West Jct Hwy 13
- No. 21 East Jct Hwy 13 to Cypress Park Entrance
- No. 21 Jct Hwy 1 to 12 km South of Leader
- No. 22 From Manitoba Border to South Jct Hwy 8
- No. 22 From Jct Hwy 9 to Jct Hwy 47
- No. 22 From Jct Hwy 47 to East Jct grid 617
- No. 24 From 11 km North of Spiritwood to Leoville
- No. 24 From Leoville to Chitek Lake
- No. 25 From Jct Hwy 3 to Jct Hwy 2
- No. 26 From 14 km North of Jct Hwy 304 to South Jct of 55 and 26 south of Peerles
- No. 28 From Jct Hwy 18 to Jct Hwy 377
- No. 30 From Eston Regional Park to Brock (SPECIAL RESTRICTION – 8,000kgs)
- No. 31 From Jct Hwy 4 to 23.1 km west (SPECIAL RESTRICTION – 8,000kgs)
- No. 31 From Herschel to grid 656
- No. 31 From 29.6 km East of Plenty to Plenty (SPECIAL RESTRICTION – 8,000kgs)
- No. 34 From U.S. Border to Jct Hwy 13
- No. 35 From Jct Hwy 48 to Jct Hwy 1
- No. 35 From 3.8 km North of Jct Hwy 1 to Jct Hwy 10
- No. 35 From Jct Hwy 306 to Jct Hwy 33
- No. 35 From Jct Hwy 33 to Jct Hwy 48
- No. 35 From White Fox to Roads End
- No. 36 From U.S. Border to Jct Hwy 2
- No. 37 U.S. Border to Climax
- No. 37 2.35 km North of Gull Lake to Cabri
- No. 42 From the Jct of 367 to the Jct North Jct of 19.
- No. 42 From Riverhurst Ferry to Jct Hwy 373
- No. 42 From Jct Hwy 373 to Lucky Lake (SPECIAL RESTRICTION – 8,000kgs)
- No. 42 From Lucky Lake to Jct Hwy 342
- No. 42 From its Jct with Hwy 44 (km 43.68) to its Jct with Hwy 15 (km 59.92), for a total of 16.2 km. (SPECIAL RESTRICTION – 8,000kgs)
- No. 42 From Jct Hwy 342 to Dinsmore
- No. 43 From Jct Hwy 4 to Jct Hwy 19
- No. 44 From 3 km south-west of Davidson (Meridian Road) to Jct. Hwy 19 (SPECIAL RESTRICTION – 8,000kgs)
- No. 44 South Jct Hwy 21 to 3.33 km West of Mantario (SPECIAL RESTRICTION – 8,000kgs)
- No. 44 3.33 kms West of Mantario to Alsask
- No. 44 From Jct Hwy 19 to Danielson Provincial Park Access (SPECIAL RESTRICTION – 8,000kgs)
- No. 44 From Hwy 44 from 1.12km west of the Junction of Hwy 219 to Hwy 45
- No. 44 From Dinsmore east to Macrorie
- No. 44 From Dinsmore to Jct Hwy 4
- No. 44 From 3.2 Km's West of Eston to N. Jct. of 21
- No. 45 From Birsay to Jct Hwy 15
- No. 45 From 8 kms South of Swanson to Delisle
- No. 47 From Handsworth Road to Jct Hwy 1
- No. 47 From Willowbrook to Buchanan
- No. 47 From 1 km North of Buchanan to Preeceville
- No. 52 From Willowbrook to Homefield
- No. 52 From Homefield to Jct Hwy 15
- No. 55 (old Hwy 55) From Jct Hwy 55 to 3 km West (Marchant Grove) Special Restrictions – 4.5 kg per mm (252 lbs/in) width of tire (manufacturer's stamped dimension) on any wheel to a maximum GVW of 22,686 kg (50,000 lbs), including the steering axle.
- No. 58 From Jct Hwy 18 to Jct Hwy 13
- No. 58 From N limits of Gravelbourg to Jct Hwy 1
- No. 80 From K-1 Mine Access to Churchbridge
- No. 80 From North town limits of Churchbridge to Jct Hwy 10 (SPECIAL RESTRICTION – 8,000kgs)
- No. 99 From Craven to Jct Hwy 6
- No. 106 From Jct Hwy 928 to Creighton
- No. 123 From Jct Hwy 55 to E.B. Campbell Dam
- No. 155 From 7.0 km North of Jct Hwy 165 to La Loche
- No. 167 From Sturgeon Weir River to Creighton
- No. 167 From Denare Beach to Creighton
- No. 201 From 500 m North of Jct Hwy 1 to Jct Hwy 247
- No. 202 Jct Hwy 2 to Buffalo Pound Park

- No. 211 From Jct Hwy 11 to Blackstrap
- No. 212 From Jct Hwy 11 to Fort Carlton Park
- No. 220 From Jct Hwy 20 to Jct 322
- No. 221 Jct Hwy 21 to Cypress Hills Park Gate
- No. 225 From Jct Hwy 2 to east border of NE-7-44-27-W2
- No. 225 From Jct Hwy 312 to east border of NE-11-44-28-W2
- No. 225 From east border of NE-7-44-27-W2 (east of St. Isidore-de-Bellevue) to east border of NE-11-44-28-W2 (MO/3-969-2021-WI1) is 9-month primary.
- No. 229 From Jct Hwy 9 to Jct Hwy 47
- No. 240 From Jct Hwy 55 to Prince Albert National Park SPECIAL RESTRICTIONS – 4.5 kg per mm (252 lbs/in) width of tire (manufacturer’s stamped dimension) on any wheel to a maximum GVW of 22,686 kg (50,000 lbs), including the steering axle
- No. 247 From Jct Hwy 9 to Jct Hwy 47
- No. 255 From Jct Hwy 55 to Tobin Lake
- No. 271 Maple Creek (Jct Hwy 21) to Fort Walsh
- No. 301 From Jct Hwy 1 from 200 metres north of the bridge to Buffalo Pound Park
- No. 306 From Riceton to Jct Hwy 6 (SPECIAL RESTRICTION – 8,000kgs)
- No. 306 From Jct Hwy 35 to Riceton
- No. 307 From Jct Hwy 7 to 13 km North of Jct Hwy 7
- No. 308 From Jct Hwy 8 to Grid 600 (SPECIAL RESTRICTION – 8,000kgs)
- No. 308 From Grid 600 to Manitoba Border
- No. 310 From Jct Hwy 52 to Grid 743
- No. 310 From Jct Grid 743 to Jct Hwy 16 (SPECIAL RESTRICTION – 8,000kgs)
- No. 310 From Jct Hwy 16 to Jct Hwy 5
- No. 312 From Wakaw to Rosthern
- No. 317 From Jct 51 to 12 KM North
- No. 318 From 2 km N of Jct Hwy 18 to Jct Hwy 361
- No. 320 From Jct Hwy 20 to Domremy
- No. 302 From Weldon Ferry to 21 km East of Prince Albert (SPECIALRESTRICTION – 8,000kgs)
- No. 321 Liebenthal (Jct Hwy 21) to 7 km East of the Alberta Border
- No. 324 From Jct Hwy 378 to Mayfair
- No. 332 Jct Hwy 32 to 7.1 km West of Jct Hwy 32
- No. 332 7.1 km West of Jct Hwy 32 to Hazlet (SPECIAL RESTRICTION – 8,000kgs)
- No. 334 From Jct Hwy 13 to 3.3 km south of Jct Hwy 339 (SEE SPECIAL RESTRICTION 8,000 Kgs)
- No. 339 From Jct Hwy 334 to Jct Hwy 39
- No. 340 From Radisson to Hafford
- No. 342 From Jct Hwy 42 to Jct Hwy 4
- No. 342 From Jct Hwy 4 to Grid 647 (north of Lacadena) (SPECIAL RESTRICTION – 8,000kgs)
- No. 355 From Meath Park to Sturgeon Lake Reserve
- No. 343 Jct Hwy 4 to Simmie
- No. 349 From Jct Hwy 35 to 15 km East of Naicam
- No. 350 From U.S. Border to Jct Hwy 18
- No. 357 From Togo to Jct Hwy 8
- No. 358 From Wood Mountain to Limerick
- No. 361 From Manitoba Border to Jct 9
- No. 363 From 43 km West of Moose Jaw to Neidpath
- No. 363 Neidpath to Jct Hwy 4
- No. 364 From Km 19.08 to Km 36.45
- No. 365 From Manitou Beach to Plunkett
- No. 367 From Jct Hwy 42 to Jct Hwy 19
- No. 371 Jct Hwy 21 to Alberta Border (SPECIAL RESTRICTION – 8,000kgs)
- No. 373 From Jct Hwy 42 to Birsay
- No. 374 From Jct Hwy 14 to Tramping Lake
- No. 376 From Asquith to Jct Hwy 40
- No. 377 From Jct Hwy 28 to Jct Hwy 6
- No. 378 From Jct Hwy 4 to Jct Hwy 324
- No. 378 From Jct Hwy 324 to Spiritwood
- No. 379 McMahon to 14.66 km East of Junction No. 4
- No. 908 From Jct Hwy 155 to Ile-a-la-Crosse
- No. 953 From Jct Hwy 2 to Jct Hwy 263

**The following Access Roads are subject to Spring Road Restrictions**

- |                                                            |                              |
|------------------------------------------------------------|------------------------------|
| No. 1 Sintaluta Access                                     | No. 2 Holdfast Access        |
| No. 1 McLean Park Access                                   | No. 2 Penzance Access        |
| No. 1 Grand Coulee Access (SPECIAL RESTRICTION – 8,000kgs) | No. 2 Liberty Access         |
| No. 1 Caron Access (SPECIAL RESTRICTION – 8,000kgs)        | No. 2 St. Victor Access      |
| No. 1 Rush Lake Access                                     | No. 2 Mossbank Access        |
| No. 1 Waldeck Access                                       | No. 2 Imperial Access        |
| No. 1 Webb Access from Km 0 to 1.87 Km                     | No. 2 Simpson Access         |
| No. 1 Tompkins Access                                      | No. 2 Meacham Access         |
| No. 1 Piapot Access                                        | No. 2 Dana Access            |
| No. 2 Sun Valley Beach Access                              | No. 2 Wakaw Lake Park Access |
|                                                            | No. 2 Cudworth Access        |
|                                                            | No. 2 Weyakwin Access        |

No. 2	Ramsey Bay Access	No. 11	Gruenthal Access
No. 2	Paddockwood Access (SPECIAL RESTRICTION – 8,000kgs)	No. 11	Blumenthal Access
No. 3	Prairie River Access	No. 11	Neunlage Access
No. 3	Crooked River Access	No. 11	Macdowell Access
No. 3	Eldersley Access	No. 12	Hepburn Access (SPECIAL RESTRICTION – 8,000kgs)
No. 3	Valparaiso Access	No. 12	Gruenfeldt Access
No. 3	Weldon Access	No. 12	Waldheim Access (SPECIAL RESTRICTION – 8,000kgs)
No. 3	Brancepeth Access	No. 13	Pangman Access
No. 3	30 Metres N of the railway crossing at Birch Hills	No. 13	Khedive Access
No. 3	Shell Lake Access	No. 13	Trossachs Access
No. 3	Medstead Access	No. 13	Bellegarde Access (SPECIAL RESTRICTION – 8,000kgs)
No. 3	Monte Nebo Access	No. 13	Arcola Access
No. 3	Turtle Lake South Bay Access	No. 13	Forget Access (SPECIAL RESTRICTION – 8,000kgs)
No. 4	Blumehof Access (SPECIAL RESTRICTION – 8,000kgs)	No. 13	Limerick Access
No. 4	Rhineland Access	No. 13	Verwood Access
No. 4	Cando Access	No. 14	Senlac Access
No. 4	Metinota Access	No. 15	Semans Access
No. 4	Aquadeo Access	No. 15	Service Road – All thin membrane surfaced roads from Fenwood to Leross
No. 4	Meadow Lake Airport – 220 meters West of Jct Hwy 4(Meadow Lake Urban Limits) to Meadow Lake Airport	No. 15	Punnichy Access
No. 5	From Leroy to 6.45 kms West	No. 15	Conquest Access
No. 5	Veregin Access	No. 15	Milden Access
No. 5	Mikado Access	No. 15	Sovereign Access
No. 5	Kuroki Access	No. 16	Jansen Access
No. 5	St. Gregor Access	No. 16	Guernsey Access
No. 5	Peterson Access	No. 16	Plunkett Access
No. 5	St. Denis Access	No. 16	Viscount Access
No. 6	Lac Vert Access	No. 16	Bradwell Access (SPECIAL RESTRICTION – 8,000kgs)
No. 6	Pleasantdale Access	No. 16	Dalmeny Access from Jct 16 to Jct 305
No. 6	Fairy Glen Access	No. 18	Beaubier Access
No. 8	Tantallon Access (SPECIAL RESTRICTION – 8,000kgs)	No. 18	Gladmar Access
No. 8	Wroxton Access	No. 18	Big Beaver Access
No. 9	Dubuc Access	No. 18	Fife Lake Access
No. 9	Crystal Lake Access	No. 18	McCord Access
No. 9	Ebenezer Access	No. 19	Loreburn Access
No. 9	Endeavour Access	No. 19	Elbow Access
No. 9	Gorlitz Access	No. 19	Kincaid Access
No. 9	Tadmire Access	No. 19	Strongfield Access
No. 11	Disley Access	No. 19	Hawarden Access
No. 11	Bethune Access	No. 20	Duval Access
No. 11	Findlater Access	No. 20	Bulyea Access
No. 11	Findlater Service Road	No. 20	Middle Lake Access
No. 11	Aylesbury Access	No. 20	St. Benedict Access
No. 11	Craik Access	No. 20	Tway Access
No. 11	Girvin Access	No. 21	Golden Prairie Access
No. 11	Davidson South	No. 21	Mendham Access (Jct 21 to 8.1 KM West) (SPECIAL RESTRICTION – 8,000kgs)
No. 11	Kenaston bypass/alternate	No. 22	Dysart Access
No. 11	Hanley Access	No. 22	Earl Grey Service Road
No. 11	Dundurn Access		

- |        |                                                                   |         |                                                         |
|--------|-------------------------------------------------------------------|---------|---------------------------------------------------------|
| No. 22 | Atwater Access                                                    | No. 44  | Glidden Access                                          |
| No. 22 | Grayson Access                                                    | No. 45  | Coteau Beach Access                                     |
| No. 22 | Gerald Access                                                     | No. 48  | Fairlight Access                                        |
| No. 23 | Caragana Access                                                   | No. 48  | Kendal Service Road                                     |
| No. 23 | Zenon Park Access                                                 | No. 48  | Odessa Service Road                                     |
| No. 23 | Weekes Access                                                     | No. 48  | Vibank Service Road                                     |
| No. 25 | Birch Hills Access                                                | No. 49  | Hazel Dell Access                                       |
| No. 25 | Hagen Access                                                      | No. 49  | Hyas Access                                             |
| No. 27 | Aberdeen Access                                                   | No. 49  | Stenen Access                                           |
| No. 31 | Herschel Access                                                   | No. 51  | Handel Access                                           |
| No. 33 | Osage Access Road                                                 | No. 51  | Ruthilda Access                                         |
| No. 33 | Kronau Service Access                                             | No. 51  | Major Access                                            |
| No. 35 | Wishart Access                                                    | No. 55  | Love Access                                             |
| No. 35 | Sylvania Access                                                   | No. 55  | Garrick Access                                          |
| No. 35 | Ridgedale Access                                                  | No. 55  | Choiceland Access                                       |
| No. 35 | Aylsham Access (SPECIAL RESTRICTION – 8,000kgs)                   | No. 55  | Snowden Access                                          |
| No. 36 | Ormiston Access                                                   | No. 80  | Yarbo Access                                            |
| No. 39 | Mc Taggart Service Road                                           | No. 123 | Cumberland House Bridge to the Cumberland House Airport |
| No. 39 | Wilcox Service Road                                               | No. 155 | Buffalo Narrows Airport                                 |
| No. 39 | Roche Percee Access                                               | No. 219 | Glenside Access                                         |
| No. 40 | Speers Access                                                     | No. 219 | Riverside Estate Access                                 |
| No. 40 | David Laird Campground Access (YEAR ROUND RESTRICTION – 8,000kgs) | No. 219 | Furdale Access                                          |
| No. 40 | Leask Access                                                      | No. 312 | Laird Access (SPECIAL RESTRICTION – 8,000kgs)           |
| No. 40 | Marcelin Access                                                   | No. 322 | Kanata Valley Access                                    |
| No. 41 | Hwy 41 North to Aberdeen                                          | No. 322 | Saskatchewan Beach Access                               |
| No. 42 | Marquis Access                                                    | No. 349 | Saint-Front Access                                      |
| No. 42 | Riverhurst Access                                                 | No. 363 | Coderre Access                                          |
| No. 42 | Tuxford Access                                                    | No. 363 | Shamrock Access                                         |
| No. 43 | Palmer Access                                                     | No. 364 | Edenwold Access                                         |
| No. 44 | Plato Access                                                      |         |                                                         |

**The following Rural Municipalities are subject to Spring Road Restrictions.**

- |        |                |         |                    |
|--------|----------------|---------|--------------------|
| No. 6  | CAMBRIA        | No. 69  | NORTON             |
| No. 7  | SOURIS VALLEY  | No. 72  | LAKE OF THE RIVERS |
| No. 8  | LAKE ALMA      | No. 73  | STONEHENGE         |
| No. 10 | HAPPY VALLEY   | No. 76  | AUVERGNE           |
| No. 11 | HART BUTTE     | No. 77  | WISE CREEK         |
| No. 12 | POPLAR VALLEY  | No. 79  | ARLINGTON          |
| No. 17 | VAL MARIE      | No. 94  | HAZELWOOD          |
| No. 38 | LAURIER        | No. 95  | GOLDEN WEST        |
| No. 40 | BENGOUGH       | No. 96  | FILLMORE           |
| No. 42 | WILLOW BUNCH   | No. 97  | WELLINGTON         |
| No. 43 | OLD POST       | No. 102 | LAKE JOHNSTON      |
| No. 45 | MANKOTA        | No. 103 | SUTTON             |
| No. 46 | GLEN MCPHERSON | No. 104 | GRAVELBOURG        |
| No. 49 | WHITE VALLEY   | No. 105 | GLEN BAIN          |
| No. 51 | RENO           | No. 106 | WHISKA CREEK       |
| No. 64 | BROCK          | No. 108 | BONE CREEK         |
| No. 65 | TECUMSEH       | No. 109 | CARMICHAEL         |
| No. 67 | WEYBURN        | No. 110 | PIAPOT             |
| No. 68 | BROKENSHELL    | No. 122 | MARTIN             |

No. 123	SILVERWOOD	No. 250	LAST MOUNTAIN VALLEY
No. 124	KINGSLEY	No. 251	BIG ARM
No. 125	CHESTER	No. 252	ARM RIVER
No. 126	MONTMARTRE	No. 255	COTEAU
No. 127	FRANCIS	No. 256	KING GEORGE
No. 128	LAJORD	No. 260	NEWCOMBE
No. 129	BRATT'S LAKE	No. 261	CHESTERFIELD
No. 130	REDBURN	No. 271	COTE
No. 132	HILLSBOROUGH	No. 273	SLIDING HILLS
No. 133	RODGERS	No. 274	GOOD LAKE
No. 134	SHAMROCK	No. 275	INSINGER
No. 135	LAWTONIA	No. 276	FOAM LAKE
No. 136	COULEE	No. 277	EMERALD
No. 137	SWIFT CURRENT	No. 279	MOUNT HOPE
No. 141	BIG STICK	No. 280	WREFORD
No. 151	ROCANVILLE	No. 281	WOOD CREEK
No. 153	WILLOWDALE	No. 282	MCCRANEY
No. 154	ELCAPO	No. 283	ROSEDALE
No. 155	WOLSELEY	No. 284	RUDY
No. 156	INDIAN HEAD	No. 285	FERTILE VALLEY
No. 157	SOUTH QU'APPELLE	No. 301	ST. PHILIPS
No. 158	EDENWOLD	No. 303	KEYS
No. 159	SHERWOOD	No. 304	BUCHANAN
No. 164	CHAPLIN	No. 305	INVERMAY
No. 171	FOX VALLEY	No. 306	PRAIRIE ROSE
No. 184	GRAYSON	No. 307	ELFROS
No. 187	NORTH QU'APPELLE	No. 312	MORRIS
No. 189	LUMSDEN	No. 315	MONTROSE
No. 190	DUFFERIN	No. 314	DUNDURN
No. 191	MARQUIS	No. 321	PRAIRIEDALE
No. 193	EYEBROW	No. 331	LIVINGSTON
No. 194	ENFIELD	No. 333	CLAYTON
No. 214	CANA	No. 334	PREECEVILLE
No. 215	STANLEY	No. 335	HAZEL DELL
No. 216	TULLYMET	No. 336	SASMAN
No. 217	LIPTON	No. 338	LAKESIDE
No. 218	CUPAR	No. 339	LEROY
No. 219	LONGLAKETON	No. 340	WOLVERINE
No. 220	MCKILLOP	No. 341	VISCOUNT
No. 223	HURON	No. 343	BLUCHER
No. 224	MAPLE BUSH	No. 344	CORMAN PARK
No. 225	CANAAN/LUCKY LAKE	No. 345	VANSCOY
No. 226	VICTORY	No. 346	PERDUE
No. 229	MIRY CREEK	No. 347	BIGGAR
No. 230	CLINTWORTH	No. 349	GRANDVIEW
No. 231	HAPPYLAND	No. 350	MARIPOSA
No. 232	DEER FORKS	No. 351	PROGRESS
No. 241	CALDER	No. 352	HEART'S HILL
No. 243	WALLACE	No. 366	KELVINGTON
No. 244	ORKNEY	No. 368	SPALDING
No. 245	GARRY	No. 369	ST. PETER
No. 246	ITUNA BON ACCORD	No. 370	HUMBOLDT
No. 247	KELLROSS	No. 371	BAYNE
No. 248	TOUCHWOOD	No. 373	ABERDEEN

No.	376	EAGLE CREEK	No.	437	NORTH BATTLEFORD
No.	377	GLENSIDE	No.	438	BATTLE RIVER
No.	378	ROSEMOUNT	No.	440	HILLSDALE
No.	379	REFORD	No.	457	CONNAUGHT
No.	380	TRAMPING LAKE	No.	459	KINISTINO
No.	381	GRASS LAKE	No.	460	BIRCH HILLS
No.	382	EYE HILL	No.	463	DUCK LAKE
No.	394	HUDSON BAY	No.	464	LEASK
No.	395	PORCUPINE	No.	466	MEETING LAKE
No.	398	PLEASANTDALE	No.	467	ROUND HILL
No.	399	LAKE LENORE	No.	468	MEOTA
No.	400	THREE LAKES	No.	486	MOOSE RANGE
No.	401	HOODOO	No.	487	NIPAWIN
No.	402	FISH CREEK	No.	488	TORCH RIVER
No.	403	ROSTHERN	No.	490	GARDEN RIVER
No.	404	LAIRD	No.	491	BUCKLAND
No.	405	GREAT BEND	No.	493	SHELLBROOK
No.	406	MAYFIELD	No.	494	CANWOOD
No.	409	BUFFALO	No.	496	SPIRITWOOD
No.	410	ROUND VALLEY	No.	497	MEDSTEAD
No.	411	SENLAC	No.	498	PARKDALE
No.	427	TISDALE	No.	501	FRENCHMAN BUTTE
No.	428	STAR CITY	No.	520	PADDOCKWOOD
No.	429	FLETT'S SPRINGS	No.	521	DISTRICT OF LAKELAND
No.	430	INVERGORDON	No.	555	BIG RIVER
No.	431	ST. LOUIS	No.	561	LOON LAKE
No.	435	REDBERRY	No.	588	MEADOW LAKE
No.	436	DOUGLAS	No.	622	BEAVER RIVER

Please note that some provincial highways and bridges are subject to special reduced or restricted weights and some are for specific periods of the year, some for precise temperatures. A detailed description of these special restrictions is listed on the last four pages of this Order.

**The following section is not part of the Order but is appended as INFORMATION:  
Special Weight Restrictions on Selected Provincial Highways.**

**The following highways are subject to reduced weights, year-round, by regulation in accordance with the *Vehicle Weight and Dimension Regulations, 2010***

Hwy	Bridge Location Description
2	Bridge over West Poplar Creek from Southern Bridge Abutment to Northern Bridge Abutment. Bridge is located approximately 1.1 km north of the Canada/U.S.A. border.

Hwy	From	To	Description
955	South abutment of the Douglas River Bridge	Northern most limit of Highway 955	Maximum GVW 41 500 kg

**The following BRIDGES are restricted by Minister's ORDER to a maximum gross vehicle weight of Secondary Weights year-round. Winter Weights are not allowed.**

Hwy	Bridge Location Description
2	Bridge over Little Red River from Southern Bridge Abutment to Northern Bridge Abutment. Bridge is located approximately 4.4 km south of Jct. with Hwy 355 and Hwy 2 near Spruce Home. <b>Bridge is located on East Frontage Road.</b>
3	Bridge over Red Deer River from Eastern Bridge Abutment to Western Bridge Abutment located approximately .5km west of Erwood, Sk.
4 Metinota Access	Bridge over Jackfish Narrows from Eastern Bridge Abutment to Western Bridge Abutment. Bridge is located in access road approximately 3.1km west of the Jct. with Hwy 4. <b>(Bridge is located on access road).</b>
312 Gabriel Dumont Bridge	Truss Bridge over South Saskatchewan River from Eastern Bridge Abutment to Western Bridge Abutment.
919	Bridge over Martineau River from Southern Bridge Abutment to Northern Bridge Abutment. Bridge is located approximately 39.5km northwest of the Jct. with Hwy 21 and Hwy 950
925 Dillion River	Bridge over Dillion River from the Eastern Bridge Abutment to Western Bridge Abutment. Bridge is located approximately 0.25 east of Northern Hamlet of St. George's Hill.
935	Bridge over Morin River from the Southern Bridge Abutment to the Northern Bridge Abutment. Bridge is located approximately 7km north of the Jct. with Hwy 165 and Hwy 935.
955 Clearwater Truss Bridge	Truss Bridge over Clearwater River from Southern Bridge Abutment to Northern Bridge Abutment. Bridge is located approximately - 62 km north of Jct 155 and 955 to the Clearwater Bridge.
980 Elbow Lake Access	Bridge over Midnight Creek from Eastern Bridge Abutment to Western Bridge Abutment. Bridge is located approximately .3 km west of Elbow Lake, Sk. <b>The bridge is located on Spirit Lake/Elbow Lake access road.</b>

**The following BRIDGES are restricted by Minister's ORDER to a maximum gross vehicle weight of Primary Weights year-round. Winter Weights are not allowed.**

Hwy	Bridge Location Description
2	Southbound Bridge over Hwy 1 from Southern Bridge Abutment to Northern Bridge Abutment. Bridge is located north of Moose Jaw Sk. at Jct with Hwy 1 and Hwy 2
6	Bridge over Barrier River Overflow from Southern Bridge Abutment to Northern Bridge Abutment. Bridge is located approximately 25.7 km south of Melfort, Sk.
903	Bridge over Beaver River. The bridge is located approximately 16.4 km north of the Jct. with Highway 55.

**The following highways are restricted by Minister's ORDER to a maximum gross vehicle weight of 8 000 kilograms year-round.**

<b>Highway</b>	<b>From</b>	<b>To</b>
1 Caron Access	Jct Hwy 1	Hamlet of Caron
1 Grand Coulee Access	Jct Hwy 1	Village of Grand Coulee
2 Eastside Service Road near Prince Albert	Jct Boundary Street East Service Rd north	Jct Township Road (approx. 2.4 kms)
4 Blumenhof Access	Jct Hwy 4 east	Blumenhof
6 Leroy Access	Jct Hwy 6	Town of Leroy
8 Tantallon Access	Jct. Hwy 8	Village of Tantallon
12 Hepburn Access	Jct. Hwy 12	Village of Hepburn
12 Waldheim Access	Jct. Hwy 12	100 meters west of the west boundary of NW 15-42-5 W3M in the town of Waldheim.
13 Bellegarde Access	Jct. Hwy 13	Bellegarde
13 Forget Access	Jct. Hwy 13	The Village of Forget
15	Jct. Hwy 16	Jct. Hwy 9
16 Bradwell Access	Jct. Hwy 16	Village of Bradwell
21 Mendham Access	Jct Hwy 21 Mendham Access	Intersection with the North-South portion of the Municipal Alternate Truck Route
30	Eston Regional Park located at the southwest corner of Section 20, Township 23, Range 20, West 3rd Meridian	The jct. of municipal Hwy located at the north-east corner of Section 34, Township 28, Range 20, West 3rd Meridian
31	Jct. Hwy 4	Herschel Access Road
31	Grid 656 at NW corner of Section 34, Township 31, Range 17, west of the 3rd Meridian	The intersection of the Plenty grid at the NW corner, Section 21, Township 32, Range 19, west of the 3rd Meridian
39 Bienfait Access	Jct Hwy 39	Jct Hwy 18 (In the Town of Bienfait)
40 David Laird Campsite Road	Jct No. Hwy 40	Jct Hwy No. 16
41 Alvena Access	Jct Hwy 41	2nd Avenue in Village of Alvena
42	Jct Hwy 42 - Keeler Service Road/Railway Ave. S.	Keeler Service Road/Railway Ave. to RM Road 643
42	Jct Hwy 373	Jct Hwy 45 in the Town of Lucky Lake
42	From its Jct with Hwy 44 (km 43.68)	its Jct with Hwy 15 (km 59.92), for a total of 16.2 km.
44	Jct Hwy 19	Junction with the Danielson Provincial Park Access located in the southeast of Section 32, Township 26, Range 6, West of the 3rd Meridian.

44	Jct Hwy 21	Westerly to the Jct with the municipal road located in the NE 1/4 of Section 24, Township 26, Range 27, west of the 3rd Meridian
44	Jct with the municipal road located at the SW 1/4 of Section 26, Township 26, Range 27, west of the 3rd Meridian	Jct with the municipal road located east of Section 31, Township 26, Range 27, west of the 3rd Meridian
306	Riceton	Jct Hwy 6
308	Jct Hwy 8	Jct with Primary Grid 600
310	Jct of Grid 743	Jct of Hwy No. 16
312 Laird Access	Jct Hwy 312	The Village of Laird
332	7.1 km west of Jct Hwy 32	The Village of Hazlet except for that portion between the east and west Jct of Hwy 37
334	Jct Hwy 13	3.3 km south of Jct Hwy 339
342	Jct Hwy 4	Jct of Primary Grid 647 north of Lacadena
371	Jct Hwy 21	Alberta Border

The following highways are restricted by Minister's ORDER to a maximum gross vehicle weight of 8 000 kilograms from March 1<sup>st</sup> to November 30<sup>th</sup> each year.

Hwy	From	To
302	Cecil Ferry Road at the SE corner of Section 22, Township 48, Range 24, west of the 2nd Meridian	Jct of the municipal road located at SE corner of Section 5, Township 49, Range 22, west of Second Meridian (located by the Weldon Ferry)

The following access road is restricted by Minister's ORDER to a maximum gross vehicle weight of 8 000 kilograms from March 1<sup>st</sup> to November 30<sup>th</sup> each year.

Hwy	From	To
2 Paddockwood Access	Jct Hwy 2	Grid Road intersection NE Section 23, Township 52, Range 25, W2nd Meridian

The following highway is restricted by Minister's ORDER to a maximum gross vehicle weight of 8 000 kilograms from March 15<sup>th</sup> to November 15<sup>th</sup> each year and when the ambient temperature is above -6°C.

Hwy	From	To
8	0.5 km North of Junction Highway 49 at Norquay	The community of Swan Plain at the south boundary of SE 27-36-1-W2M

The following Access Road is restricted by Minister's ORDER to a maximum gross vehicle weight of 8 000 kilograms from February 24 to November 15<sup>th</sup> each year and when the ambient temperature is above -6°C.

Hwy	From	To
35 Aylsham Access	Hwy 35 (NW corner of section 32, township 48, range 14, west of second Meridian)	Aylsham (NE corner of section 34, township 48, range 13, west of second Meridian)

The following highway is restricted by Minister's ORDER to a maximum gross vehicle weight of 75% of primary highway weights, except during winter weight season, when winter secondary weights shall apply.

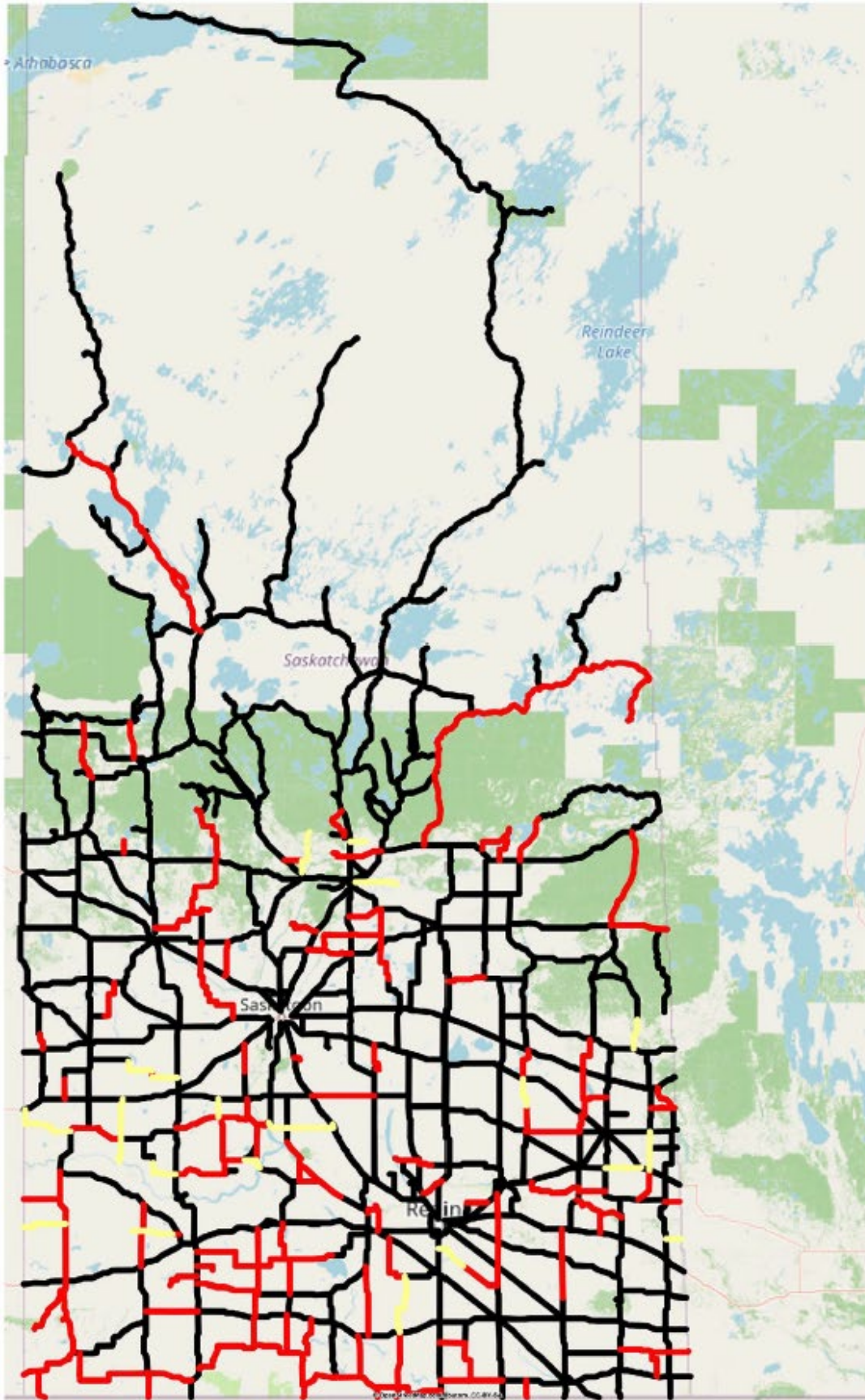
Hwy	From	To
240	Junction Highway 55	No. 240 - From Jct Hwy 55 to Prince Albert National Park SPECIAL RESTRICTIONS – 4.5 kg per mm (252 lbs/in) width of tire (manufacturer's stamped dimension) on any wheel to a maximum GVW of 22,686 kg (50,000 lbs), including the steering axle.

For detailed information on Rural Roads, call the local rural municipality or for Provincial Highway information email the Highway Hotline [hotline@gov.sk.ca](mailto:hotline@gov.sk.ca). The rural municipality administers and maintains the alternate haul routes. They are also responsible for issuing any overweight permits associated with the alternate haul routes.

Saskatchewan Ministry of Highways and Infrastructure provides seasonal highway restriction information on the Internet at: <http://www.saskatchewan.ca/truckingweights> under Special Weights.

Truckers can also contact the Saskatchewan Ministry of Highways, Trucking inquiry line at Toll free in Saskatchewan: 1-866-933-5290 Out of Saskatchewan: 306-933-5290 email: [mhitrucking@gov.sk.ca](mailto:mhitrucking@gov.sk.ca)

Saskatchewan  Spring Road Restriction 2026 - Order 10



**Spring Weight Season**

-  No Restrictions
-  Restricted
-  Future Restrictions

**Special Weight Restrictions**

-  Special Weight Restrictions

Note:  
This map is for quick reference, please refer to the above Order for the exact location.