



**Minister's Order Pursuant to section 35(1) of "The Highways and Transportation Act, 1997"**

Pursuant to section 35(1) of "*The Highways and Transportation Act, 1997*" it is hereby ordered that, effective as stated in this Order, **at 12:01 am, Friday May 8, 2026** or where it has been stated **effective immediately**. Vehicles other than those exempted in Part II, section 3 (2) and 3 (5) of "*The Vehicle Weight and Dimensions Regulations, 2010*", shall be restricted as follows:

**Steering Axle**

- 10.0 kg per mm (560 pounds per inch) width of tire (manufacturer's stamped dimension) to a maximum of
- 5,500 kg on the steering axle for a truck or truck tractor equipped with a single steering axle.
- 11,000 kg on the steering axle group for a truck or truck tractor equipped with a tandem axle steering group.

**Other Axles**

- 6.25 kg per mm (350 pounds per inch) width of tire (manufacturer's stamped dimension) to a maximum of:
- 1,650 kg (3,638 pounds) per tire, or
- 2,630 kg per tire for axles equipped with single tires with a width of 445 mm or greater.

This order does not permit the weight on any axle, axle group or vehicle from exceeding the maximum weight prescribed in the "*The Vehicle Weight and Dimension Regulations, 2010*" for that axle, axle group or vehicle.

**The restriction does not apply to:**

- Emergency vehicles,
- Ministry of Highways vehicles and municipal maintenance equipment when conducting maintenance or accessing sites on or along the restricted highway,
- SaskPower, SaskEnergy and SaskTel vehicles when accessing sites along the restricted route,
- Recreational vehicles,
- Buses,
- Farm Equipment operated or towed,
- Vehicles directly crossing a Provincial Highway at an intersecting public highway or private road.

Please note that some provincial highways and bridges are subject to special reduced or restricted weights and some are for specific periods of the year, some for precise temperatures. A detailed description of these special restrictions is listed on the last four pages of this Order.



Government  
— of —  
Saskatchewan

## SPRING ROAD RESTRICTIONS 2026

Fourteenth Order 2026

The following Rural Municipality **will be removed immediately** from Spring Road Restrictions upon posting this Order.

No. 260 NEWCOMBE  
No. 314 DUNDURN  
No. 321 PRAIRIEDALE  
No. 345 VANSCOY  
No. 379 REFORD  
No. 401 HOODOO

Signed on behalf of the Minister on this 5<sup>st</sup> day of May 2026.

A handwritten signature in blue ink, appearing to read "Lana Eering".

Lana Eering  
Government of Saskatchewan  
Ministry of Highways  
Manager, Highway Hotline/Emergency Planning Officer

**The following Provincial Highways are subject to Spring Road Restrictions.**

- No. 3 From Manitoba Border to Hudson Bay
- No. 4 From Jct Hwy 55 to Jct Hwy 224
- No. 5 From Manitoba Border to Jct Hwy 57
- No. 8 From Norquay to 14.6 km. South of Forest Boundary (SPECIAL RESTRICTIONS -8,000kgs from Midnight Mar. 14 to Midnight Nov. 15)
- No. 9 From Hudson Bay to Ruby Lake Access
- No. 15 From Jct Hwy 16 to Jct Hwy 9 (SPECIAL RESTRICTION – 8,000kgs)
- No. 20 From Middle Lake to Jct Hwy 320
- No. 20 From 1.6 km North of Pilger to Middle Lake
- No. 20 From Jct Hwy 320 to Jct Hwy 3
- No. 22 From Manitoba Border to South Jct Hwy 8
- No. 22 From Jct Hwy 9 to Jct Hwy 47
- No. 22 From Jct Hwy 47 to East Jct grid 617
- No. 24 From 11 km North of Spiritwood to Leoville
- No. 24 From Leoville to Chitek Lake
- No. 25 From Jct Hwy 3 to Jct Hwy 2
- No. 26 From 14 km North of Jct Hwy 304 to South Jct of 55 and 26 south of Peerles
- No. 30 From Eston Regional Park to Brock (SPECIAL RESTRICTION – 8,000kgs)
- No. 31 From Jct Hwy 4 to 23.1 km west (SPECIAL RESTRICTION – 8,000kgs)
- No. 31 From Herschel to grid 656
- No. 31 From 29.6 km East of Plenty to Plenty (SPECIAL RESTRICTION – 8,000kgs)
- No. 35 From White Fox to Roads End
- No. 42 From Riverhurst Ferry to Jct Hwy 373
- No. 42 From Jct Hwy 373 to Lucky Lake (SPECIAL RESTRICTION – 8,000kgs)
- No. 42 From Lucky Lake to Jct Hwy 342
- No. 42 From its Jct with Hwy 44 (km 43.68) to its Jct with Hwy 15 (km 59.92), for a total of 16.2 km. (SPECIAL RESTRICTION – 8,000kgs)
- No. 42 From Jct Hwy 342 to Dinsmore
- No. 44 From Jct Hwy 19 to Danielson Provincial Park Access (SPECIAL RESTRICTION – 8,000kgs)
- No. 44 From Hwy 44 from 1.12km west of the Junction of Hwy 219 to Hwy 45
- No. 44 From Dinsmore east to Macrorie
- No. 44 From Dinsmore to Jct Hwy 4
- No. 44 From 3.2 Km's West of Eston to N. Jct. of 21
- No. 45 From Birsay to Jct Hwy 15
- No. 45 From 8 kms South of Swanson to Delisle
- No. 47 From Willowbrook to Buchanan
- No. 47 From 1 km North of Buchanan to Preeceville
- No. 52 From Willowbrook to Homefield
- No. 52 From Homefield to Jct Hwy 15
- No. 55 (old Hwy 55) From Jct Hwy 55 to 3 km West (Marchant Grove) Special Restrictions – 4.5 kg per mm (252 lbs/in) width of tire (manufacturer's stamped dimension) on any wheel to a maximum GVW of 22,686 kg (50,000 lbs), including the steering axle.
- No. 80 From K-1 Mine Access to Churchbridge
- No. 80 From North town limits of Churchbridge to Jct Hwy 10 (SPECIAL RESTRICTION – 8,000kgs)
- No. 106 From Jct Hwy 928 to Creighton
- No. 123 From Jct Hwy 55 to E.B. Campbell Dam
- No. 155 From 7.0 km North of Jct Hwy 165 to La Loche
- No. 167 From Sturgeon Weir River to Creighton
- No. 167 From Denare Beach to Creighton
- No. 201 From 500 m North of Jct Hwy 1 to Jct Hwy 247
- No. 211 From Jct Hwy 11 to Blackstrap
- No. 212 From Jct Hwy 11 to Fort Carlton Park
- No. 225 From Jct Hwy 2 to east border of NE-7-44-27-W2
- No. 225 From Jct Hwy 312 to east border of NE-11-44-28-W2
- No. 225 From east border of NE-7-44-27-W2 (east of St. Isidore-de-Bellevue) to east border of NE-11-44-28-W2 (MO/3-969-2021-W11) is 9-month primary.
- No. 229 From Jct Hwy 9 to Jct Hwy 47
- No. 240 From Jct Hwy 55 to Prince Albert National Park SPECIAL RESTRICTIONS – 4.5 kg per mm (252 lbs/in) width of tire (manufacturer's stamped dimension) on any wheel to a maximum GVW of 22,686 kg (50,000 lbs), including the steering axle
- No. 247 From Jct Hwy 9 to Jct Hwy 47
- No. 255 From Jct Hwy 55 to Tobin Lake
- No. 307 From Jct Hwy 7 to 13 km North of Jct Hwy 7
- No. 310 From Jct Hwy 52 to Grid 743
- No. 310 From Jct Grid 743 to Jct Hwy 16 (SPECIAL RESTRICTION – 8,000kgs)
- No. 310 From Jct Hwy 16 to Jct Hwy 5
- No. 312 From Wakaw to Rosthern
- No. 317 From Jct 51 to 12 KM North
- No. 320 From Jct Hwy 20 to Domremy
- No. 302 From Weldon Ferry to 21 km East of Prince Albert (SPECIALRESTRICTION – 8,000kgs)
- No. 324 From Jct Hwy 378 to Mayfair
- No. 340 From Radisson to Hafford
- No. 342 From Jct Hwy 42 to Jct Hwy 4
- No. 342 From Jct Hwy 4 to Grid 647 (north of Lacadena) (SPECIAL RESTRICTION – 8,000kgs)
- No. 355 From Meath Park to Sturgeon Lake Reserve
- No. 349 From Jct Hwy 35 to 15 km East of Naicam
- No. 357 From Togo to Jct Hwy 8
- No. 365 From Manitou Beach to Plunkett

No. 373 From Jct Hwy 42 to Birsay  
No. 374 From Jct Hwy 14 to Tramping Lake  
No. 376 From Asquith to Jct Hwy 40  
No. 378 From Jct Hwy 4 to Jct Hwy 324

No. 378 From Jct Hwy 324 to Spiritwood  
No. 908 From Jct Hwy 155 to Ile-a-la-Crosse  
No. 953 From Jct Hwy 2 to Jct Hwy 263

**The following Access Roads are subject to Spring Road Restrictions**

No. 2	Imperial Access	No. 11	Dundurn Access
No. 2	Simpson Access	No. 11	Gruenthal Access
No. 2	Meacham Access	No. 11	Blumenthal Access
No. 2	Dana Access	No. 11	Neunlage Access
No. 2	Wakaw Lake Park Access	No. 11	Macdowell Access
No. 2	Cudworth Access	No. 12	Hepburn Access (SPECIAL RESTRICTION – 8,000kgs)
No. 2	Weyakwin Access	No. 12	Gruenfeldt Access
No. 2	Ramsey Bay Access	No. 12	Waldheim Access (SPECIAL RESTRICTION – 8,000kgs)
No. 2	Paddockwood Access (SPECIAL RESTRICTION – 8,000kgs)	No. 14	Senlac Access
No. 3	Prairie River Access	No. 15	Service Road – All thin membrane surfaced roads from Fenwood to Leross
No. 3	Crooked River Access	No. 15	Punnichy Access
No. 3	Eldersley Access	No. 15	Conquest Access
No. 3	Valparaiso Access	No. 15	Milden Access
No. 3	Weldon Access	No. 15	Sovereign Access
No. 3	Brancepeth Access	No. 16	Jansen Access
No. 3	30 Metres N of the railway crossing at Birch Hills	No. 16	Guernsey Access
No. 3	Shell Lake Access	No. 16	Plunkett Access
No. 3	Medstead Access	No. 16	Viscount Access
No. 3	Monte Nebo Access	No. 16	Bradwell Access (SPECIAL RESTRICTION – 8,000kgs)
No. 3	Turtle Lake South Bay Access	No. 16	Dalmeny Access from Jct 16 to Jct 305
No. 4	Cando Access	No. 19	Strongfield Access
No. 4	Metinota Access	No. 19	Hawarden Access
No. 4	Aquadeo Access	No. 20	Middle Lake Access
No. 4	Meadow Lake Airport – 220 meters West of Jct Hwy 4(Meadow Lake Urban Limits) to Meadow Lake Airport	No. 20	St. Benedict Access
No. 5	From Leroy to 6.45 kms West	No. 20	Tway Access
No. 5	Veregin Access	No. 22	Atwater Access
No. 5	Mikado Access	No. 22	Grayson Access
No. 5	Kuroki Access	No. 22	Gerald Access
No. 5	St. Gregor Access	No. 23	Caragana Access
No. 5	Peterson Access	No. 23	Zenon Park Access
No. 5	St. Denis Access	No. 23	Weekes Access
No. 6	Lac Vert Access	No. 25	Birch Hills Access
No. 6	Pleasantdale Access	No. 25	Hagen Access
No. 6	Fairy Glen Access	No. 27	Aberdeen Access
No. 8	Wroxton Access	No. 31	Herschel Access
No. 9	Dubuc Access	No. 35	Wishart Access
No. 9	Crystal Lake Access	No. 35	Sylvania Access
No. 9	Ebenezer Access	No. 35	Ridgedale Access
No. 9	Endeavour Access	No. 35	Aylsham Access (SPECIAL RESTRICTION – 8,000kgs)
No. 9	Gorlitz Access	No. 40	Speers Access
No. 9	Tadmire Access	No. 40	David Laird Campground Access (YEAR ROUND RESTRICTION – 8,000kgs)
No. 11	Kenaston bypass/alternate		
No. 11	Hanley Access		

- |        |                          |         |  |
|--------|--------------------------|---------|--|
| No. 40 | Leask Access             | No. 55  | Garrick Access   |
| No. 40 | Marcelin Access          | No. 55  | Choiceland Access  |
| No. 41 | Hwy 41 North to Aberdeen | No. 55  | Snowden Access   |
| No. 44 | Plato Access             | No. 80  | Yarbo Access   |
| No. 44 | Glidden Access           | No. 123 | Cumberland House Bridge to the<br>Cumberland House Airport |
| No. 45 | Coteau Beach Access      | No. 155 | Buffalo Narrows Airport                                    |
| No. 49 | Hazel Dell Access        | No. 219 | Glenside Access  |
| No. 49 | Hyas Access              | No. 219 | Riverside Estate Access                                    |
| No. 49 | Stenen Access            | No. 219 | Furdale Access   |
| No. 51 | Handel Access            | No. 312 | Laird Access (SPECIAL RESTRICTION –<br>8,000kgs)           |
| No. 51 | Ruthilda Access          | No. 349 | Saint-Front Access   |
| No. 51 | Major Access             |         |  |
| No. 55 | Love Access              |         |  |

**The following Rural Municipalities are subject to Spring Road Restrictions.**

- |         |                   |         |              |
|---------|-------------------|---------|--------------|
| No. 184 | GRAYSON           | No. 321 | PRAIRIEDALE  |
| No. 214 | CANA              | No. 331 | LIVINGSTON   |
| No. 215 | STANLEY           | No. 333 | CLAYTON      |
| No. 217 | LIPTON            | No. 334 | PREECEVILLE  |
| No. 225 | CANAAN/LUCKY LAKE | No. 335 | HAZEL DELL   |
| No. 226 | VICTORY           | No. 336 | SASMAN       |
| No. 241 | CALDER            | No. 338 | LAKESIDE     |
| No. 243 | WALLACE           | No. 340 | WOLVERINE    |
| No. 244 | ORKNEY            | No. 341 | VISCOUNT     |
| No. 245 | GARRY             | No. 343 | BLUCHER      |
| No. 246 | ITUNA BON ACCORD  | No. 344 | CORMAN PARK  |
| No. 247 | KELLROSS          | No. 346 | PERDUE       |
| No. 248 | TOUCHWOOD         | No. 347 | BIGGAR       |
| No. 251 | BIG ARM           | No. 349 | GRANDVIEW    |
| No. 255 | COTEAU            | No. 350 | MARIPOSA     |
| No. 256 | KING GEORGE       | No. 351 | PROGRESS     |
| No. 271 | COTE              | No. 352 | HEART'S HILL |
| No. 273 | SLIDING HILLS     | No. 366 | KELVINGTON   |
| No. 274 | GOOD LAKE         | No. 368 | SPALDING     |
| No. 275 | INSINGER          | No. 369 | ST. PETER    |
| No. 276 | FOAM LAKE         | No. 370 | HUMBOLDT     |
| No. 277 | EMERALD           | No. 371 | BAYNE        |
| No. 279 | Mount Hope        | No. 373 | ABERDEEN     |
| No. 280 | WREFORD           | No. 376 | EAGLE CREEK  |
| No. 281 | WOOD CREEK        | No. 377 | GLENSIDE     |
| No. 282 | MCCRANEY          | No. 378 | ROSEMOUNT    |
| No. 283 | ROSEDALE          | No. 381 | GRASS LAKE   |
| No. 284 | RUDY              | No. 382 | EYE HILL     |
| No. 285 | FERTILE VALLEY    | No. 394 | HUDSON BAY   |
| No. 301 | ST. PHILIPS       | No. 395 | PORCUPINE    |
| No. 303 | KEYS              | No. 398 | PLEASANTDALE |
| No. 304 | BUCHANAN          | No. 399 | LAKE LENORE  |
| No. 305 | INVERMAY          | No. 400 | THREE LAKES  |
| No. 307 | ELFROS            | No. 402 | FISH CREEK   |
| No. 309 | PRAIRIE ROSE      | No. 403 | ROSTHERN     |
| No. 312 | MORRIS            | No. 404 | LAIRD        |
| No. 315 | MONTROSE          | No. 406 | MAYFIELD     |

No.	409	BUFFALO	No.	468	MEOTA
No.	410	ROUND VALLEY	No.	486	MOOSE RANGE
No.	411	SENLAC	No.	487	NIPAWIN
No.	427	TISDALE	No.	488	TORCH RIVER
No.	428	STAR CITY	No.	490	GARDEN RIVER
No.	429	FLETT'S SPRINGS	No.	491	BUCKLAND
No.	430	INVERGORDON	No.	493	SHELLBROOK
No.	431	ST. LOUIS	No.	494	CANWOOD
No.	435	REDBERRY	No.	496	SPIRITWOOD
No.	437	NORTH BATTLEFORD	No.	497	MEDSTEAD
No.	438	BATTLE RIVER	No.	498	PARKDALE
No.	440	HILLSDALE	No.	501	FRENCHMAN BUTTE
No.	457	CONNAUGHT	No.	520	PADDOCKWOOD
No.	459	KINISTINO	No.	521	DISTRICT OF LAKELAND
No.	460	BIRCH HILLS	No.	555	BIG RIVER
No.	463	DUCK LAKE	No.	561	LOON LAKE
No.	464	LEASK	No.	588	MEADOW LAKE
No.	466	MEETING LAKE	No.	622	BEAVER RIVER
No.	467	ROUND HILL			

Please note that some provincial highways and bridges are subject to special reduced or restricted weights and some are for specific periods of the year, some for precise temperatures. A detailed description of these special restrictions is listed on the last four pages of this Order.

**The following section is not part of the Order but is appended as INFORMATION:  
Special Weight Restrictions on Selected Provincial Highways.**

**The following highways are subject to reduced weights, year-round, by regulation in accordance with the *Vehicle Weight and Dimension Regulations, 2010***

Hwy	Bridge Location Description
2	Bridge over West Poplar Creek from Southern Bridge Abutment to Northern Bridge Abutment. Bridge is located approximately 1.1 km north of the Canada/U.S.A. border.

Hwy	From	To	Description
955	South abutment of the Douglas River Bridge	Northern most limit of Highway 955	Maximum GVW 41 500 kg

**The following BRIDGES are restricted by Minister's ORDER to a maximum gross vehicle weight of Secondary Weights year-round. Winter Weights are not allowed.**

Hwy	Bridge Location Description
2	Bridge over Little Red River from Southern Bridge Abutment to Northern Bridge Abutment. Bridge is located approximately 4.4 km south of Jct. with Hwy 355 and Hwy 2 near Spruce Home. <b>Bridge is located on East Frontage Road.</b>
3	Bridge over Red Deer River from Eastern Bridge Abutment to Western Bridge Abutment located approximately .5km west of Erwood, Sk.
4 Metinota Access	Bridge over Jackfish Narrows from Eastern Bridge Abutment to Western Bridge Abutment. Bridge is located in access road approximately 3.1km west of the Jct. with Hwy 4. <b>(Bridge is located on access road).</b>
312 Gabriel Dumont Bridge	Truss Bridge over South Saskatchewan River from Eastern Bridge Abutment to Western Bridge Abutment.
919	Bridge over Martineau River from Southern Bridge Abutment to Northern Bridge Abutment. Bridge is located approximately 39.5km northwest of the Jct. with Hwy 21 and Hwy 950
925 Dillion River	Bridge over Dillion River from the Eastern Bridge Abutment to Western Bridge Abutment. Bridge is located approximately 0.25 east of Northern Hamlet of St. George's Hill.
935	Bridge over Morin River from the Southern Bridge Abutment to the Northern Bridge Abutment. Bridge is located approximately 7km north of the Jct. with Hwy 165 and Hwy 935.
955 Clearwater Truss Bridge	Truss Bridge over Clearwater River from Southern Bridge Abutment to Northern Bridge Abutment. Bridge is located approximately - 62 km north of Jct 155 and 955 to the Clearwater Bridge.
980 Elbow Lake Access	Bridge over Midnight Creek from Eastern Bridge Abutment to Western Bridge Abutment. Bridge is located approximately .3 km west of Elbow Lake, Sk. <b>The bridge is located on Spirit Lake/Elbow Lake access road.</b>

**The following BRIDGES are restricted by Minister's ORDER to a maximum gross vehicle weight of Primary Weights year-round. Winter Weights are not allowed.**

Hwy	Bridge Location Description
2	Southbound Bridge over Hwy 1 from Southern Bridge Abutment to Northern Bridge Abutment. Bridge is located north of Moose Jaw Sk. at Jct with Hwy 1 and Hwy 2
6	Bridge over Barrier River Overflow from Southern Bridge Abutment to Northern Bridge Abutment. Bridge is located approximately 25.7 km south of Melfort, Sk.
903	Bridge over Beaver River. The bridge is located approximately 16.4 km north of the Jct. with Highway 55.

**The following highways are restricted by Minister's ORDER to a maximum gross vehicle weight of 8 000 kilograms year-round.**

<b>Highway</b>	<b>From</b>	<b>To</b>
1 Caron Access	Jct Hwy 1	Hamlet of Caron
1 Grand Coulee Access	Jct Hwy 1	Village of Grand Coulee
2 Eastside Service Road near Prince Albert	Jct Boundary Street East Service Rd north	Jct Township Road (approx. 2.4 kms)
4 Blumenhof Access	Jct Hwy 4 east	Blumenhof
6 Leroy Access	Jct Hwy 6	Town of Leroy
8 Tantallon Access	Jct. Hwy 8	Village of Tantallon
12 Hepburn Access	Jct. Hwy 12	Village of Hepburn
12 Waldheim Access	Jct. Hwy 12	100 meters west of the west boundary of NW 15-42-5 W3M in the town of Waldheim.
13 Bellegarde Access	Jct. Hwy 13	Bellegarde
13 Forget Access	Jct. Hwy 13	The Village of Forget
15	Jct. Hwy 16	Jct. Hwy 9
16 Bradwell Access	Jct. Hwy 16	Village of Bradwell
21 Mendham Access	Jct Hwy 21 Mendham Access	Intersection with the North-South portion of the Municipal Alternate Truck Route
30	Eston Regional Park located at the southwest corner of Section 20, Township 23, Range 20, West 3rd Meridian	The jct. of municipal Hwy located at the north-east corner of Section 34, Township 28, Range 20, West 3rd Meridian
31	Jct. Hwy 4	Herschel Access Road
31	Grid 656 at NW corner of Section 34, Township 31, Range 17, west of the 3rd Meridian	The intersection of the Plenty grid at the NW corner, Section 21, Township 32, Range 19, west of the 3rd Meridian
39 Bienfait Access	Jct Hwy 39	Jct Hwy 18 (In the Town of Bienfait)
40 David Laird Campsite Road	Jct No. Hwy 40	Jct Hwy No. 16
41 Alvena Access	Jct Hwy 41	2nd Avenue in Village of Alvena
42	Jct Hwy 42 - Keeler Service Road/Railway Ave. S.	Keeler Service Road/Railway Ave. to RM Road 643
42	Jct Hwy 373	Jct Hwy 45 in the Town of Lucky Lake
42	From its Jct with Hwy 44 (km 43.68)	its Jct with Hwy 15 (km 59.92), for a total of 16.2 km.
44	Jct Hwy 19	Junction with the Danielson Provincial Park Access located in the southeast of Section 32, Township 26, Range 6, West of the 3rd Meridian.

44	Jct Hwy 21	Westerly to the Jct with the municipal road located in the NE 1/4 of Section 24, Township 26, Range 27, west of the 3rd Meridian
44	Jct with the municipal road located at the SW 1/4 of Section 26, Township 26, Range 27, west of the 3rd Meridian	Jct with the municipal road located east of Section 31, Township 26, Range 27, west of the 3rd Meridian
306	Riceton	Jct Hwy 6
308	Jct Hwy 8	Jct with Primary Grid 600
310	Jct of Grid 743	Jct of Hwy No. 16
312 Laird Access	Jct Hwy 312	The Village of Laird
332	7.1 km west of Jct Hwy 32	The Village of Hazlet except for that portion between the east and west Jct of Hwy 37
334	Jct Hwy 13	3.3 km south of Jct Hwy 339
342	Jct Hwy 4	Jct of Primary Grid 647 north of Lacadena
371	Jct Hwy 21	Alberta Border

The following highways are restricted by Minister's ORDER to a maximum gross vehicle weight of 8 000 kilograms from March 1<sup>st</sup> to November 30<sup>th</sup> each year.

Hwy	From	To
302	Cecil Ferry Road at the SE corner of Section 22, Township 48, Range 24, west of the 2nd Meridian	Jct of the municipal road located at SE corner of Section 5, Township 49, Range 22, west of Second Meridian (located by the Weldon Ferry)

The following access road is restricted by Minister's ORDER to a maximum gross vehicle weight of 8 000 kilograms from March 1<sup>st</sup> to November 30<sup>th</sup> each year.

Hwy	From	To
2 Paddockwood Access	Jct Hwy 2	Grid Road intersection NE Section 23, Township 52, Range 25, W2nd Meridian

The following highway is restricted by Minister's ORDER to a maximum gross vehicle weight of 8 000 kilograms from March 15<sup>th</sup> to November 15<sup>th</sup> each year and when the ambient temperature is above -6°C.

Hwy	From	To
8	0.5 km North of Junction Highway 49 at Norquay	The community of Swan Plain at the south boundary of SE 27-36-1-W2M

The following Access Road is restricted by Minister's ORDER to a maximum gross vehicle weight of 8 000 kilograms from February 24 to November 15<sup>th</sup> each year and when the ambient temperature is above -6°C.

Hwy	From	To
35 Aylsham Access	Hwy 35 (NW corner of section 32, township 48, range 14, west of second Meridian)	Aylsham (NE corner of section 34, township 48, range 13, west of second Meridian)

The following highway is restricted by Minister's ORDER to a maximum gross vehicle weight of 75% of primary highway weights, except during winter weight season, when winter secondary weights shall apply.

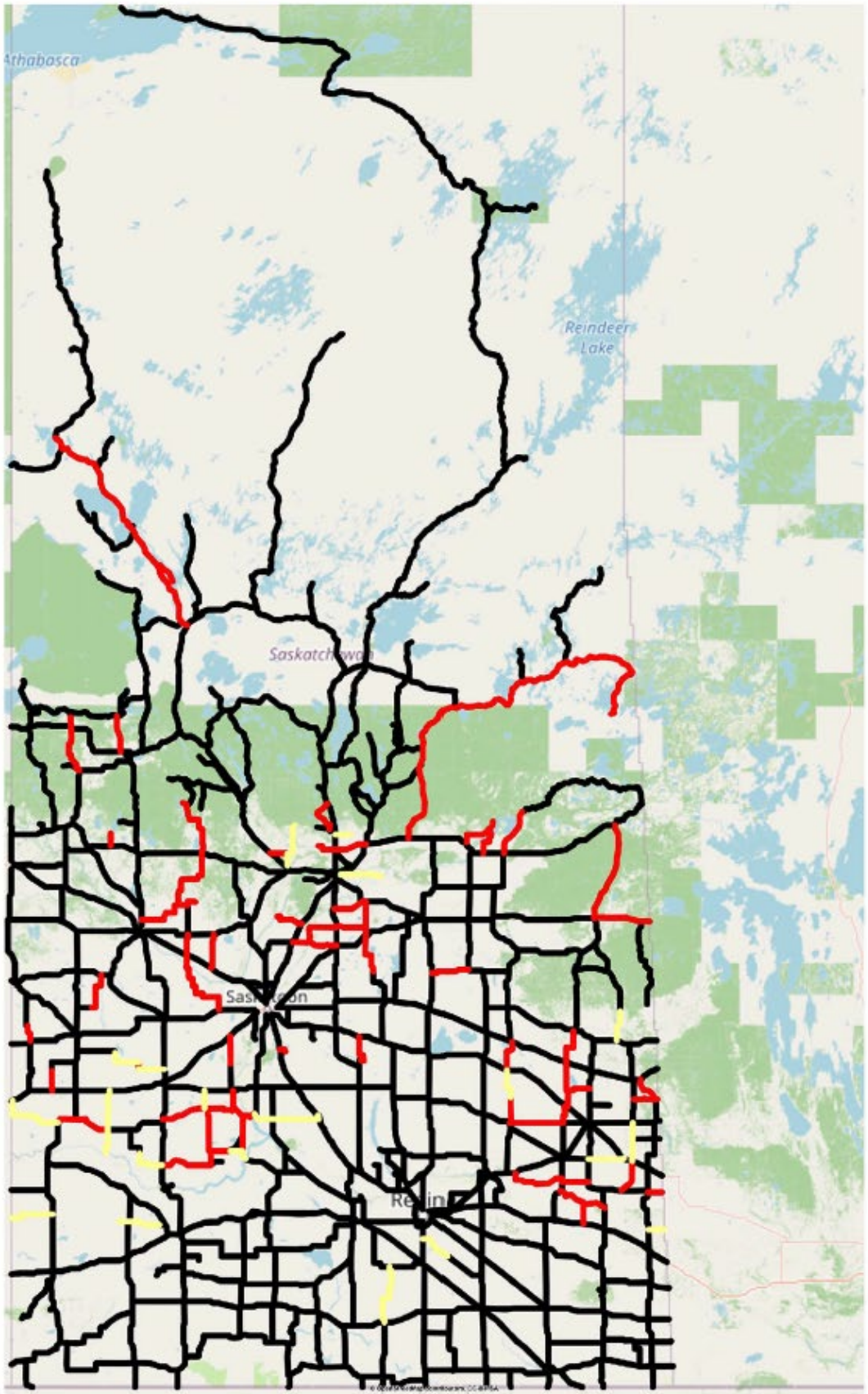
Hwy	From	To
240	Junction Highway 55	No. 240 - From Jct Hwy 55 to Prince Albert National Park SPECIAL RESTRICTIONS – 4.5 kg per mm (252 lbs/in) width of tire (manufacturer's stamped dimension) on any wheel to a maximum GVW of 22,686 kg (50,000 lbs), including the steering axle.

For detailed information on Rural Roads, call the local rural municipality or for Provincial Highway information email the Highway Hotline [hotline@gov.sk.ca](mailto:hotline@gov.sk.ca). The rural municipality administers and maintains the alternate haul routes. They are also responsible for issuing any overweight permits associated with the alternate haul routes.

Saskatchewan Ministry of Highways and Infrastructure provides seasonal highway restriction information on the Internet at: <http://www.saskatchewan.ca/truckingweights> under Special Weights.

Truckers can also contact the Saskatchewan Ministry of Highways, Trucking inquiry line at Toll free in Saskatchewan: 1-866-933-5290 Out of Saskatchewan: 306-933-5290 email: [mhitrucking@gov.sk.ca](mailto:mhitrucking@gov.sk.ca)

Saskatchewan  Spring Road Restriction 2026 - Order 14



**Spring Weight Season**

-  No Restrictions
-  Restricted
-  Future Changes/Restrictions

**Special Weight Restrictions**

-  Special Weight Restrictions

Note:  
This map is for quick reference, please refer to the above Order for the exact location.