



**Minister's Order Pursuant to section 35(1) of "The Highways and Transportation Act, 1997"**

Pursuant to section 35(1) of "*The Highways and Transportation Act, 1997*" it is hereby ordered that, effective as stated in this Order, **at 12:01 am, Friday May 15, 2026**. Vehicles other than those exempted in Part II, section 3 (2) and 3 (5) of "*The Vehicle Weight and Dimensions Regulations, 2010*", shall be restricted as follows:

**Steering Axle**

- 10.0 kg per mm (560 pounds per inch) width of tire (manufacturer's stamped dimension) to a maximum of
- 5,500 kg on the steering axle for a truck or truck tractor equipped with a single steering axle.
- 11,000 kg on the steering axle group for a truck or truck tractor equipped with a tandem axle steering group.

**Other Axles**

- 6.25 kg per mm (350 pounds per inch) width of tire (manufacturer's stamped dimension) to a maximum of:
- 1,650 kg (3,638 pounds) per tire, or
- 2,630 kg per tire for axles equipped with single tires with a width of 445 mm or greater.

This order does not permit the weight on any axle, axle group or vehicle from exceeding the maximum weight prescribed in the "*The Vehicle Weight and Dimension Regulations, 2010*" for that axle, axle group or vehicle.

**The restriction does not apply to:**

- Emergency vehicles,
- Ministry of Highways vehicles and municipal maintenance equipment when conducting maintenance or accessing sites on or along the restricted highway,
- SaskPower, SaskEnergy and SaskTel vehicles when accessing sites along the restricted route,
- Recreational vehicles,
- Buses,
- Farm Equipment operated or towed,
- Vehicles directly crossing a Provincial Highway at an intersecting public highway or private road.

Please note that some provincial highways and bridges are subject to special reduced or restricted weights and some are for specific periods of the year, some for precise temperatures. A detailed description of these special restrictions is listed on the last four pages of this Order.



Government  
— of —  
Saskatchewan

## SPRING ROAD RESTRICTIONS 2026

Sixteenth Order 2026

The following Rural Municipality **will be removed** from Spring Road Restrictions effective immediately upon posting this Order.

No. 428 STAR CITY

Signed on behalf of the Minister on this 12<sup>th</sup> day of May 2026.

A handwritten signature in blue ink, appearing to read "Lana Eering".

Lana Eering  
Government of Saskatchewan  
Ministry of Highways  
Manager, Highway Hotline/Emergency Planning Officer

**The following Provincial Highways are subject to Spring Road Restrictions.**

- |         |   |         |  |
|---------|---|---------|--|
| No. 3   | From Manitoba Border to Hudson Bay  | No. 155 | From 7.0 km North of Jct Hwy 165 to La Loche   |
| No. 4   | From Jct Hwy 55 to Jct Hwy 224  | No. 167 | From Sturgeon Weir River to Creighton  |
| No. 9   | From Hudson Bay to Ruby Lake Access   | No. 167 | From Denare Beach to Creighton   |
| No. 20  | From Jct Hwy 320 to Jct Hwy 3   |         |  |
| No. 24  | From 11 km North of Spiritwood to Leoville  | No. 240 | From Jct Hwy 55 to Prince Albert National Park SPECIAL RESTRICTIONS – 4.5 kg per mm (252 lbs/in) width of tire (manufacturer’s stamped dimension) on any wheel to a maximum GVW of 22,686 kg (50,000 lbs), including the steering axle |
| No. 24  | From Leoville to Chitek Lake  | No. 255 | From Jct Hwy 55 to Tobin Lake  |
| No. 25  | From Jct Hwy 3 to Jct Hwy 2   |         |  |
| No. 26  | From 14 km North of Jct Hwy 304 to South Jct of 55 and 26 south of Peerles  | No. 302 | From Weldon Ferry to 21 km East of Prince Albert (SPECIALRESTRICTION – 8,000kgs)   |
| No. 35  | From White Fox to Roads End   | No. 355 | From Meath Park to Sturgeon Lake Reserve   |
| No. 55  | (old Hwy 55) From Jct Hwy 55 to 3 km West (Marchant Grove) Special Restrictions – 4.5 kg per mm (252 lbs/in) width of tire (manufacturer’s stamped dimension) on any wheel to a maximum GVW of 22,686 kg (50,000 lbs), including the steering axle. | No. 908 | From Jct Hwy 155 to Ile-a-la-Crosse  |
| No. 106 | From Jct Hwy 928 to Creighton   | No. 953 | From Jct Hwy 2 to Jct Hwy 263  |
| No. 123 | From Jct Hwy 55 to E.B. Campbell Dam  |         |  |

**The following Access Roads are subject to Spring Road Restrictions**

- |        |   |         |   |
|--------|---|---------|---|
| No. 2  | Ramsey Bay Access   | No. 19  | Strongfield Access                                      |
| No. 2  | Paddockwood Access (SPECIAL RESTRICTION – 8,000kgs)   | No. 19  | Hawarden Access   |
| No. 3  | Prairie River Access  | No. 23  | Zenon Park Access                                       |
| No. 3  | Crooked River Access  | No. 23  | Weekes Access   |
| No. 3  | Eldersley Access  | No. 25  | Birch Hills Access                                      |
| No. 3  | Valparaiso Access   | No. 25  | Hagen Access  |
| No. 3  | Weldon Access   | No. 35  | Sylvania Access   |
| No. 3  | Brancepeth Access   | No. 35  | Ridgedale Access  |
| No. 3  | 30 Metres N of the railway crossing at Birch Hills  | No. 35  | Aylsham Access (SPECIAL RESTRICTION – 8,000kgs)         |
| No. 3  | Shell Lake Access   | No. 40  | Leask Access  |
| No. 3  | Medstead Access   | No. 40  | Marcelin Access   |
| No. 3  | Monte Nebo Access   | No. 44  | Plato Access  |
| No. 3  | Turtle Lake South Bay Access  | No. 44  | Glidden Access  |
| No. 4  | Meadow Lake Airport – 220 meters West of Jct Hwy 4(Meadow Lake Urban Limits) to Meadow Lake Airport | No. 55  | Love Access   |
| No. 6  | Lac Vert Accessc  | No. 55  | Garrick Access  |
| No. 6  | Pleasantdale Access   | No. 55  | Choiceland Access                                       |
| No. 6  | Fairy Glen Access   | No. 55  | Snowden Access  |
| No. 16 | Jansen Access   | No. 123 | Cumberland House Bridge to the Cumberland House Airport |
| No. 16 | Guernsey Access   | No. 155 | Buffalo Narrows Airport                                 |

**The following Rural Municipalities are subject to Spring Road Restrictions.**

- |     |     |              |     |     |              |
|-----|-----|--------------|-----|-----|--------------|
| No. | 331 | LIVINGSTON   | No. | 464 | LEASK        |
| No. | 394 | HUDSON BAY   | No. | 466 | MEETING LAKE |
| No. | 398 | PLEASANTDALE | No. | 467 | ROUND HILL   |
| No. | 430 | INVERGORDON  | No. | 486 | MOOSE RANGE  |
| No. | 459 | KINISTINO    | No. | 487 | NIPAWIN      |
| No. | 463 | DUCK LAKE    | No. | 488 | TORCH RIVER  |

No. 490 GARDEN RIVER  
No. 491 BUCKLAND  
No. 493 SHELLBROOK  
No. 494 CANWOOD  
No. 496 SPIRITWOOD  
No. 497 MEDSTEAD  
No. 498 PARKDALE

No. 501 FRENCHMAN BUTTE  
No. 520 PADDOCKWOOD  
No. 521 DISTRICT OF LAKELAND  
No. 555 BIG RIVER  
No. 561 LOON LAKE  
No. 588 MEADOW LAKE  
No. 622 BEAVER RIVER

Please note that some provincial highways and bridges are subject to special reduced or restricted weights and some are for specific periods of the year, some for precise temperatures. A detailed description of these special restrictions is listed on the last four pages of this Order.

**The following section is not part of the Order but is appended as INFORMATION:  
Special Weight Restrictions on Selected Provincial Highways.**

The following highways are subject to reduced weights, year-round, by regulation in accordance with the *Vehicle Weight and Dimension Regulations, 2010*

Hwy	Bridge Location Description
2	Bridge over West Poplar Creek from Southern Bridge Abutment to Northern Bridge Abutment. Bridge is located approximately 1.1 km north of the Canada/U.S.A. border.

Hwy	From	To	Description
955	South abutment of the Douglas River Bridge	Northern most limit of Highway 955	Maximum GVW 41 500 kg

The following BRIDGES are restricted by Minister's ORDER to a maximum gross vehicle weight of Secondary Weights year-round. Winter Weights are not allowed.

Hwy	Bridge Location Description
2	Bridge over Little Red River from Southern Bridge Abutment to Northern Bridge Abutment. Bridge is located approximately 4.4 km south of Jct. with Hwy 355 and Hwy 2 near Spruce Home. <b>Bridge is located on East Frontage Road.</b>
3	Bridge over Red Deer River from Eastern Bridge Abutment to Western Bridge Abutment located approximately .5km west of Erwood, Sk.
4 Metinota Access	Bridge over Jackfish Narrows from Eastern Bridge Abutment to Western Bridge Abutment. Bridge is located in access road approximately 3.1km west of the Jct. with Hwy 4. <b>(Bridge is located on access road).</b>
312 Gabriel Dumont Bridge	Truss Bridge over South Saskatchewan River from Eastern Bridge Abutment to Western Bridge Abutment.
919	Bridge over Martineau River from Southern Bridge Abutment to Northern Bridge Abutment. Bridge is located approximately 39.5km northwest of the Jct. with Hwy 21 and Hwy 950
925 Dillion River	Bridge over Dillion River from the Eastern Bridge Abutment to Western Bridge Abutment. Bridge is located approximately 0.25 east of Northern Hamlet of St. George's Hill.
935	Bridge over Morin River from the Southern Bridge Abutment to the Northern Bridge Abutment. Bridge is located approximately 7km north of the Jct. with Hwy 165 and Hwy 935.
955 Clearwater Truss Bridge	Truss Bridge over Clearwater River from Southern Bridge Abutment to Northern Bridge Abutment. Bridge is located approximately - 62 km north of Jct 155 and 955 to the Clearwater Bridge.
980 Elbow Lake Access	Bridge over Midnight Creek from Eastern Bridge Abutment to Western Bridge Abutment. Bridge is located approximately .3 km west of Elbow Lake, Sk. <b>The bridge is located on Spirit Lake/Elbow Lake access road.</b>

The following BRIDGES are restricted by Minister's ORDER to a maximum gross vehicle weight of Primary Weights year-round. Winter Weights are not allowed.

Hwy	Bridge Location Description
2	Southbound Bridge over Hwy 1 from Southern Bridge Abutment to Northern Bridge Abutment. Bridge is located north of Moose Jaw Sk. at Jct with Hwy 1 and Hwy 2
6	Bridge over Barrier River Overflow from Southern Bridge Abutment to Northern Bridge Abutment. Bridge is located approximately 25.7 km south of Melfort, Sk.
903	Bridge over Beaver River. The bridge is located approximately 16.4 km north of the Jct. with Highway 55.

**The following highways are restricted by Minister's ORDER to a maximum gross vehicle weight of 8 000 kilograms year-round.**

<b>Highway</b>	<b>From</b>	<b>To</b>
1 Caron Access	Jct Hwy 1	Hamlet of Caron
1 Grand Coulee Access	Jct Hwy 1	Village of Grand Coulee
2 Eastside Service Road near Prince Albert	Jct Boundary Street East Service Rd north	Jct Township Road (approx. 2.4 kms)
4 Blumenhof Access	Jct Hwy 4 east	Blumenhof
6 Leroy Access	Jct Hwy 6	Town of Leroy
8 Tantallon Access	Jct. Hwy 8	Village of Tantallon
12 Hepburn Access	Jct. Hwy 12	Village of Hepburn
12 Waldheim Access	Jct. Hwy 12	100 meters west of the west boundary of NW 15-42-5 W3M in the town of Waldheim.
13 Bellegarde Access	Jct. Hwy 13	Bellegarde
13 Forget Access	Jct. Hwy 13	The Village of Forget
15	Jct. Hwy 16	Jct. Hwy 9
16 Bradwell Access	Jct. Hwy 16	Village of Bradwell
21 Mendham Access	Jct Hwy 21 Mendham Access	Intersection with the North-South portion of the Municipal Alternate Truck Route
30	Eston Regional Park located at the southwest corner of Section 20, Township 23, Range 20, West 3rd Meridian	The jct. of municipal Hwy located at the north-east corner of Section 34, Township 28, Range 20, West 3rd Meridian
31	Jct. Hwy 4	Herschel Access Road
31	Grid 656 at NW corner of Section 34, Township 31, Range 17, west of the 3rd Meridian	The intersection of the Plenty grid at the NW corner, Section 21, Township 32, Range 19, west of the 3rd Meridian
39 Bienfait Access	Jct Hwy 39	Jct Hwy 18 (In the Town of Bienfait)
40 David Laird Campsite Road	Jct No. Hwy 40	Jct Hwy No. 16
41 Alvena Access	Jct Hwy 41	2nd Avenue in Village of Alvena
42	Jct Hwy 42 - Keeler Service Road/Railway Ave. S.	Keeler Service Road/Railway Ave. to RM Road 643
42	Jct Hwy 373	Jct Hwy 45 in the Town of Lucky Lake
42	From its Jct with Hwy 44 (km 43.68)	its Jct with Hwy 15 (km 59.92), for a total of 16.2 km.
44	Jct Hwy 19	Junction with the Danielson Provincial Park Access located in the southeast of Section 32, Township 26, Range 6, West of the 3rd Meridian.

44	Jct Hwy 21	Westerly to the Jct with the municipal road located in the NE 1/4 of Section 24, Township 26, Range 27, west of the 3rd Meridian
44	Jct with the municipal road located at the SW 1/4 of Section 26, Township 26, Range 27, west of the 3rd Meridian	Jct with the municipal road located east of Section 31, Township 26, Range 27, west of the 3rd Meridian
306	Riceton	Jct Hwy 6
308	Jct Hwy 8	Jct with Primary Grid 600
310	Jct of Grid 743	Jct of Hwy No. 16
312 Laird Access	Jct Hwy 312	The Village of Laird
332	7.1 km west of Jct Hwy 32	The Village of Hazlet except for that portion between the east and west Jct of Hwy 37
334	Jct Hwy 13	3.3 km south of Jct Hwy 339
342	Jct Hwy 4	Jct of Primary Grid 647 north of Lacadena
371	Jct Hwy 21	Alberta Border

The following highways are restricted by Minister's ORDER to a maximum gross vehicle weight of 8 000 kilograms from March 1<sup>st</sup> to November 30<sup>th</sup> each year.

Hwy	From	To
302	Cecil Ferry Road at the SE corner of Section 22, Township 48, Range 24, west of the 2nd Meridian	Jct of the municipal road located at SE corner of Section 5, Township 49, Range 22, west of Second Meridian (located by the Weldon Ferry)

The following access road is restricted by Minister's ORDER to a maximum gross vehicle weight of 8 000 kilograms from March 1<sup>st</sup> to November 30<sup>th</sup> each year.

Hwy	From	To
2 Paddockwood Access	Jct Hwy 2	Grid Road intersection NE Section 23, Township 52, Range 25, W2nd Meridian

The following highway is restricted by Minister's ORDER to a maximum gross vehicle weight of 8 000 kilograms from March 15<sup>th</sup> to November 15<sup>th</sup> each year and when the ambient temperature is above -6°C.

Hwy	From	To
8	0.5 km North of Junction Highway 49 at Norquay	The community of Swan Plain at the south boundary of SE 27-36-1-W2M

The following Access Road is restricted by Minister's ORDER to a maximum gross vehicle weight of 8 000 kilograms from February 24 to November 15<sup>th</sup> each year and when the ambient temperature is above -6°C.

Hwy	From	To
35 Aylsham Access	Hwy 35 (NW corner of section 32, township 48, range 14, west of second Meridian)	Aylsham (NE corner of section 34, township 48, range 13, west of second Meridian)

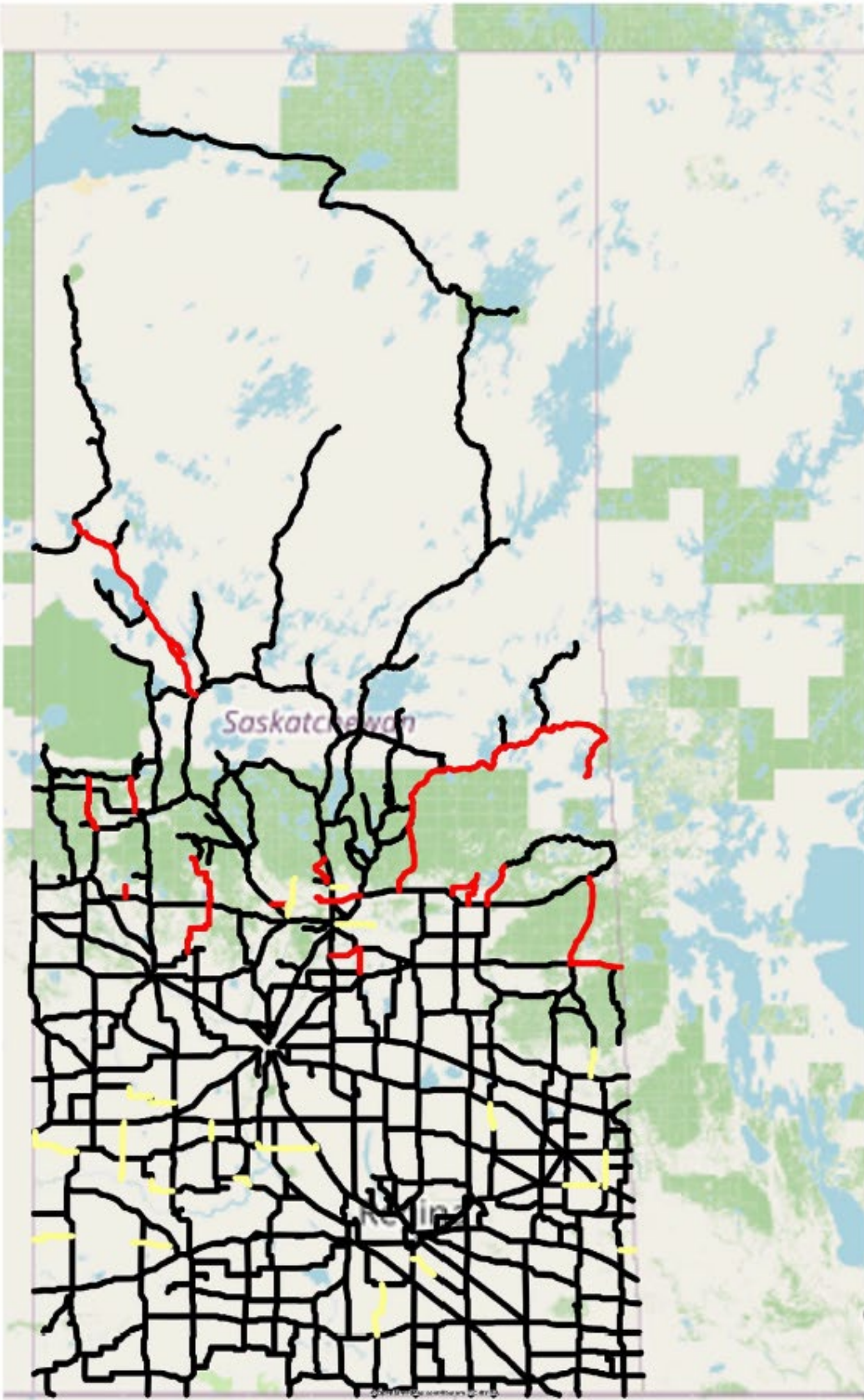
The following highway is restricted by Minister's ORDER to a maximum gross vehicle weight of 75% of primary highway weights, except during winter weight season, when winter secondary weights shall apply.

Hwy	From	To
240	Junction Highway 55	No. 240 - From Jct Hwy 55 to Prince Albert National Park SPECIAL RESTRICTIONS – 4.5 kg per mm (252 lbs/in) width of tire (manufacturer's stamped dimension) on any wheel to a maximum GVW of 22,686 kg (50,000 lbs), including the steering axle.

For detailed information on Rural Roads, call the local rural municipality or for Provincial Highway information email the Highway Hotline [hotline@gov.sk.ca](mailto:hotline@gov.sk.ca). The rural municipality administers and maintains the alternate haul routes. They are also responsible for issuing any overweight permits associated with the alternate haul routes.

Saskatchewan Ministry of Highways and Infrastructure provides seasonal highway restriction information on the Internet at: <http://www.saskatchewan.ca/truckingweights> under Special Weights.

Truckers can also contact the Saskatchewan Ministry of Highways, Trucking inquiry line at Toll free in Saskatchewan: 1-866-933-5290 Out of Saskatchewan: 306-933-5290 email: [mhitrucking@gov.sk.ca](mailto:mhitrucking@gov.sk.ca)



**Spring Weight Season**

-  No Restrictions
-  Restricted
-  Future Changes/Restrictions

**Special Weight Restrictions**

-  Special Weight Restrictions

Note:  
This map is for quick reference, please refer to the above Order for the exact location.