



CIELO VERDE PHASE 5

1483

by
Jacobson Homes

Livable Area:

1,483 sq. ft.

Footprint:

3 Bedrooms

1 3/4 Bath

2 Car Garage

9' Ceilings

Options:

10' Ceilings

Fireplace in Living Room

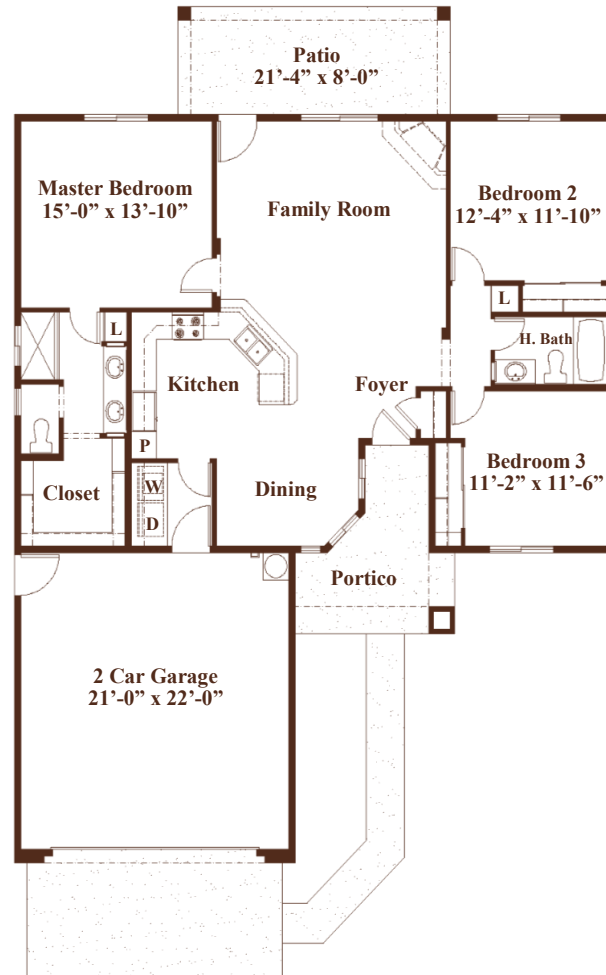
Granite

8' High Garage Door

Tile Roof

Patio Under Truss

Stuccoed Eaves



All dimensions and floor areas are approximate. Prices and specifications are subject to change without notice, solely at builder's discretion. Elevation drawings are artistic interpretations of the appearance of the design, which may differ from the actual results when built. Each home to be constructed is subject to terms of approval of a building permit by the City of Yuma. Options and additions depicted are not available on all plans or lots.



Main: 1334 S 5 Ave. | Sales: 3310 S. Ave 8E, Suite #1 Yuma, AZ 85365 | Tel: 928-329-9000 |
[www. JacobsonHomesYuma.com](http://www.JacobsonHomesYuma.com)

