

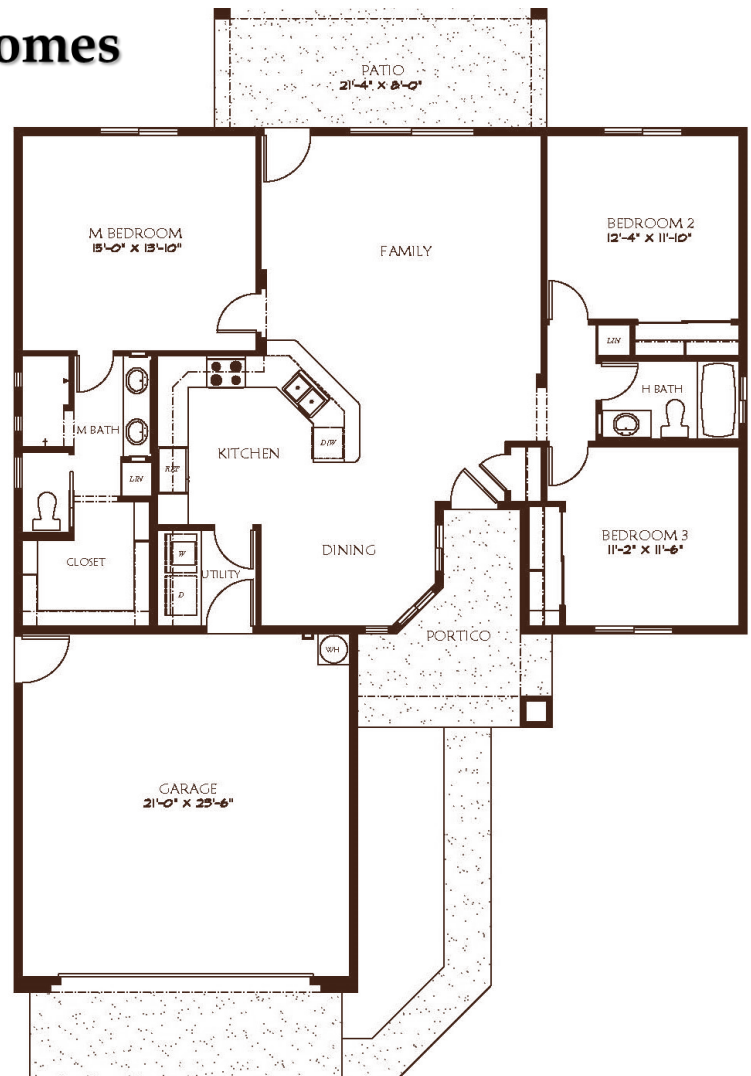


CIELO VERDE PHASE 3B

1483



Livable Area:
1,483 sq. ft.
Footprint:
3 Bedrooms
1 3/4 Bath
2 Car Garage
9' Ceilings
Options:
10' Ceilings
Fireplace in Living Room



All dimensions and floor areas are approximate. Prices and specifications are subject to change without notice, solely at builder's discretion. Elevation drawings are artistic interpretations of the appearance of the design, which may differ from the actual results when built. Each home to be constructed is subject to terms of approval of a building permit by the City of Yuma. Options and additions depicted are not available on all plans or lots.



Main: 1334 S 5 Ave. | Sales: 3310 S. Ave 8E, Suite #1 Yuma, AZ 85365 | Tel: 928-329-9000 |
[www. JacobsonHomesYuma.com](http://www.JacobsonHomesYuma.com)

