



CIELO VERDE PHASE 3B

by
Jacobson Homes

1684

Livable Area:

1684 Sq. Ft.

Footprint:

3 Bedrooms

1 3/4 Bath

3 Car Tandem Garage

Options:

Game Room/ Den

4th Bedroom

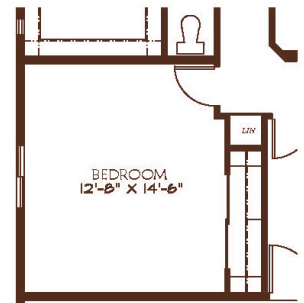
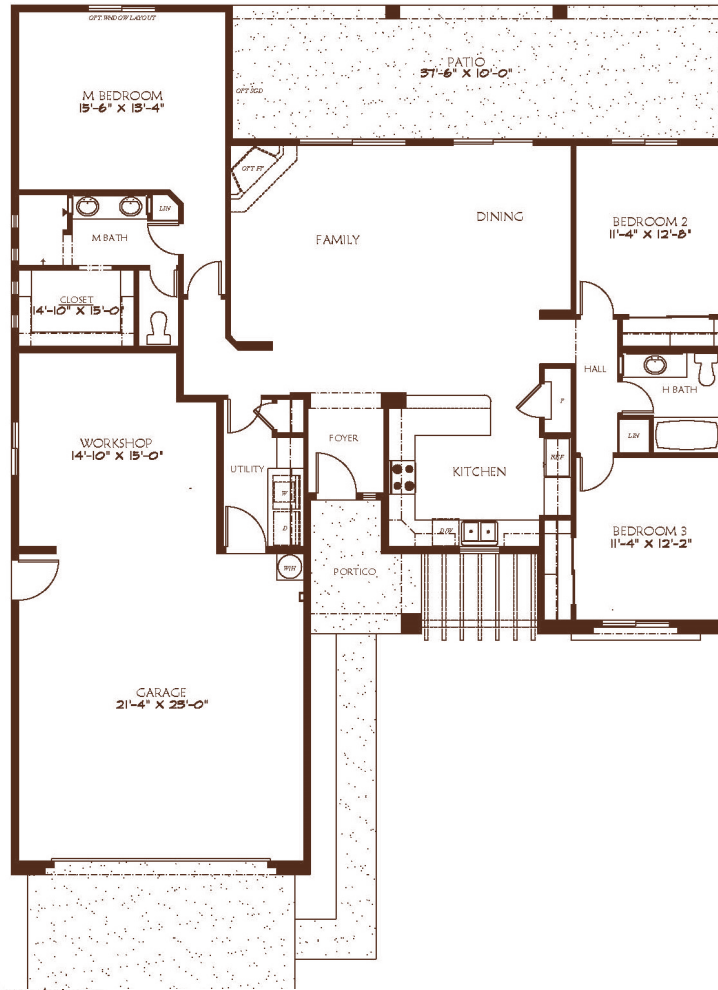
Opt. Master Bath Design

Fireplace

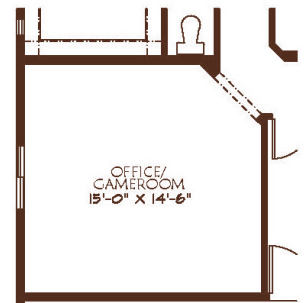
Standard Features:

Granite counter tops

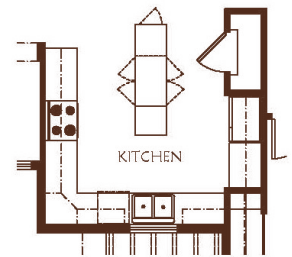
Snail Master Shower



OPTIONAL BEDROOM



OPTIONAL GAMEROOM/OFFICE



OPTIONAL KITCHEN ISLAND



All dimensions and floor areas are approximate. Prices and specifications are subject to change without notice, solely at builder's discretion. Elevation drawings are artistic interpretations of the appearance of the design, which may differ from the actual results when built. Each home to be constructed is subject to terms of approval of a building permit by the City/County of Yuma. Options and additions depicted are not available on all plans or lots.



Main: 1334 S 5 Ave. | Sales: 3310 S. Ave 8E, Suite #1 Yuma, AZ 85365 | Tel: 928-329-9000 | [www. JacobsonHomesYuma.com](http://www.JacobsonHomesYuma.com)

