



# CIELO VERDE PHASE 5

# 1862

by  
**Jacobson Homes**

**Livable Area:**

1862 Sq. Ft.

**Footprint:**

3 Bedrooms

2 Full Bath

Living Room

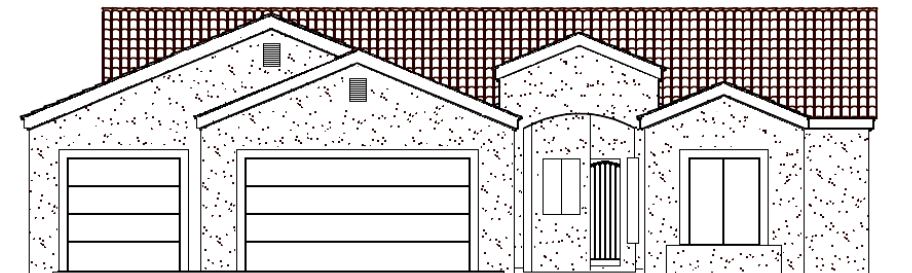
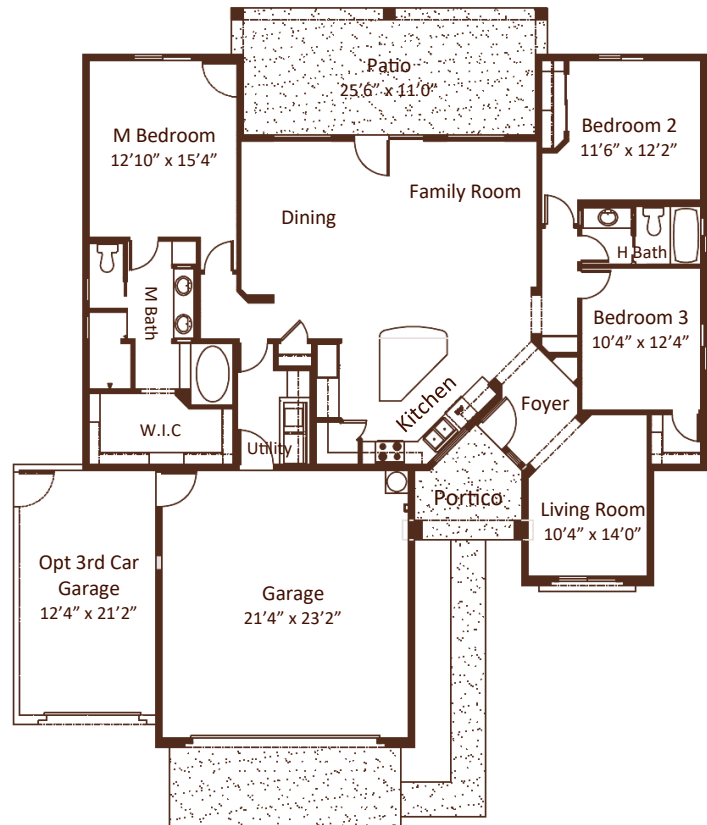
**Options:**

Two Master Suites

Fireplace in Living Room

Patio door in M. Bedroom

3 Car Garage



All dimensions and floor areas are approximate. Prices and specifications are subject to change without notice, solely at builder's discretion. Elevation drawings are artistic interpretations of the appearance of the design, which may differ from the actual results when built. Each home to be constructed is subject to terms of approval of a building permit by the City/County of Yuma. Options and additions depicted are not available on all plans or lots.



Main: 1334 S 5 Ave. | Sales: 3310 S. Ave 8E, Suite #1 Yuma, AZ 85365 | Tel: 928-329-9000 |  
[www.JacobsonHomesYuma.com](http://www.JacobsonHomesYuma.com)

