



CIELO VERDE PHASE 3B

1901



by
Jacobson Homes

Livable Area:

1901 Sq. Ft.

2189 Sq. Ft. w/4th

Bedroom option

Footprint:

3 Bedrooms

2 Bath

Tandem 3rd car garage

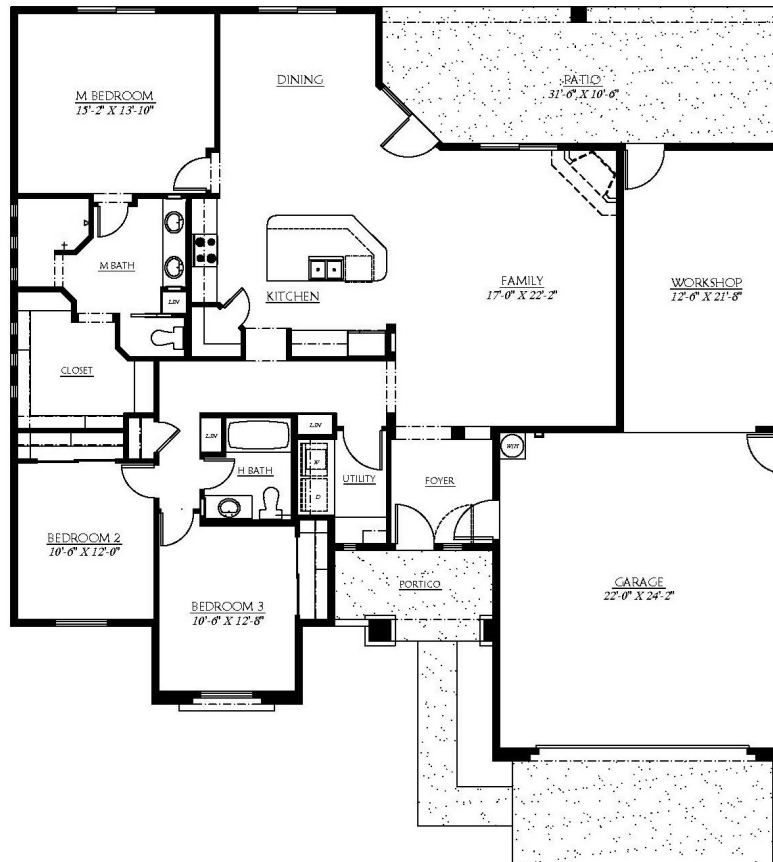
Options:

4th bedroom/3rd bath

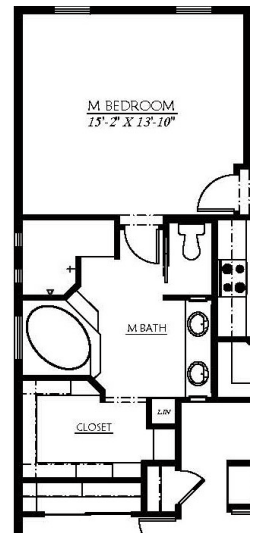
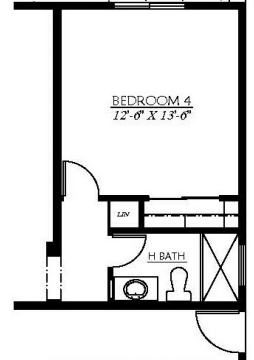
Garden tub

Master bath layout

Fireplace



* Optional 4th
bedroom in lieu
of tandem garage



* Optional Master
bath layout



All dimensions and floor areas are approximate. Prices and specifications are subject to change without notice, solely at builder's discretion. Elevation drawings are artistic interpretations of the appearance of the design, which may differ from the actual results when built. Each home to be constructed is subject to terms of approval of a building permit by the City/County of Yuma. Options and additions depicted are not available on all plans or lots.



Main: 1334 S 5 Ave. | Sales: 3310 S. Ave 8E, Suite #1 Yuma, AZ 85365 | Tel: 928-329-9000
www. JacobsonHomesYuma.com



Last Updated 3/8/23