



CIELO VERDE PHASE 3B

by
Jacobson Homes

1963

Side Entry

Livable Area:

1963 Sq. Ft.

Footprint:

4 Bedrooms

1 3/4 Bath

2 Car Garage

Options:

Office/ Den

Extended Patio

Standard Features:

Granite counter tops
throughout

Ceiling Fans,

In all bedrooms & family room

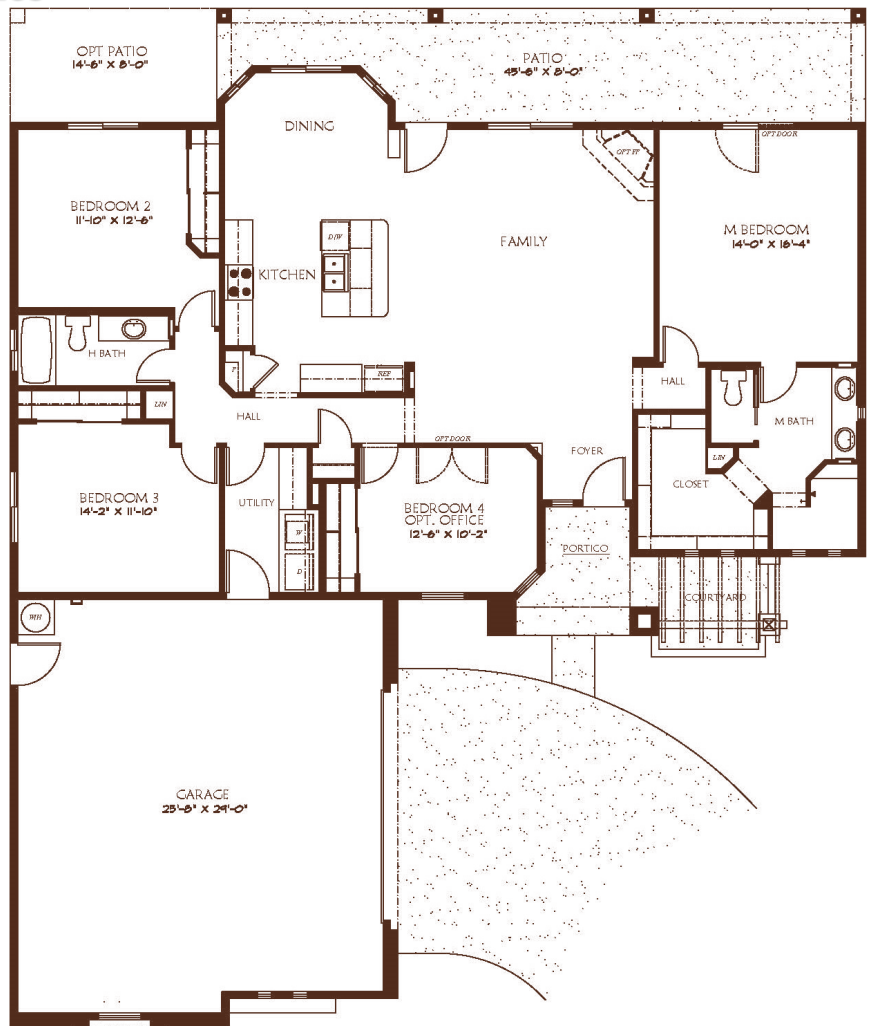
Snail Master Shower

Tile everywhere,

except bedrooms & family room

Oversized 2 car garage

(Over 725 Sq. Ft.)



All dimensions and floor areas are approximate. Prices and specifications are subject to change without notice, solely at builder's discretion. Elevation drawings are artistic interpretations of the appearance of the design, which may differ from the actual results when built. Each home to be constructed is subject to terms of approval of a building permit by the City/County of Yuma. Options and additions depicted are not available on all plans or lots.



Main: 1334 S 5 Ave. | Sales: 3310 S. Ave 8E, Suite #1 Yuma, AZ 85365 | Tel: 928-329-9000 |
[www. JacobsonHomesYuma.com](http://www.JacobsonHomesYuma.com)

