



CIELO VERDE PHASE 5

2199

 by
Jacobson Homes

Livable Area:

2199 Sq. Ft.

Footprint:

4 Bedrooms

2 1/2 Bath

2 Car Garage

Options:

Office/Den

Master Double Door

Sliding Glass Door to Courtyard

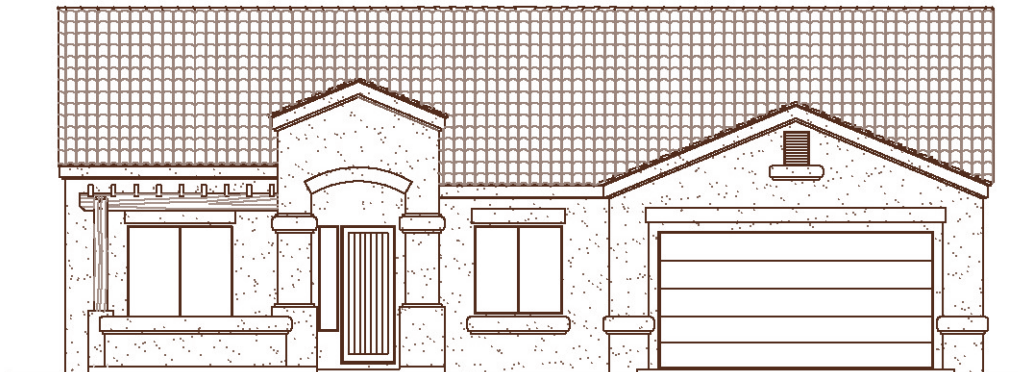
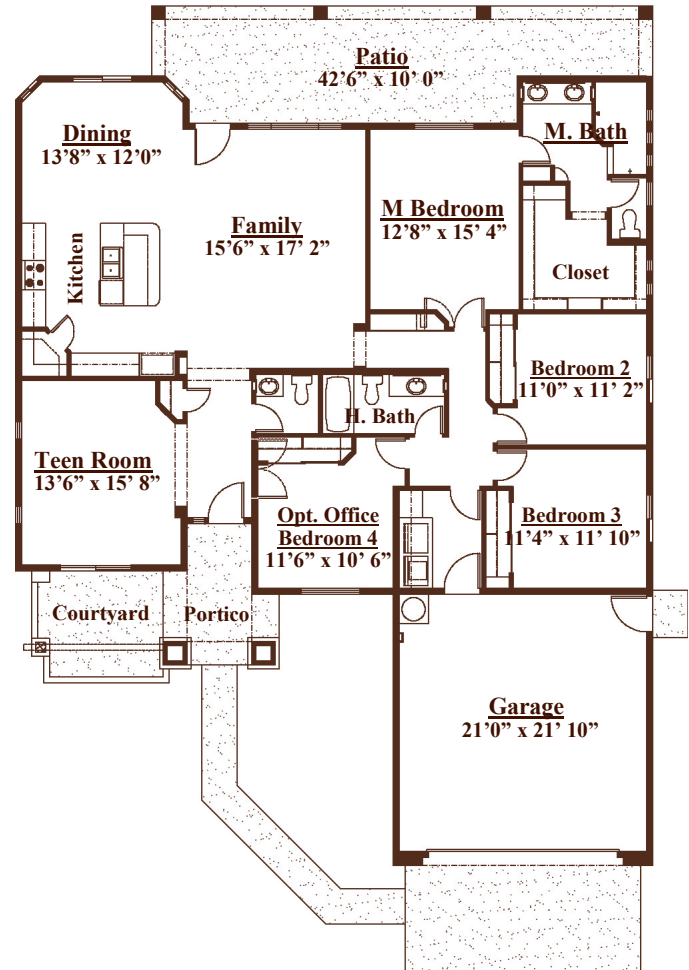
Fireplace

Standard Features:

Granite Kitchen Counter Tops

Tiled "snail" Master Shower

Trellised Front Courtyard



All dimensions and floor areas are approximate. Prices and specifications are subject to change without notice, solely at builder's discretion. Elevation drawings are artistic interpretations of the appearance of the design, which may differ from the actual results when built. Each home to be constructed is subject to terms of approval of a building permit by the City/County of Yuma. Options and additions depicted are not available on all plans or lots.



Main: 1334 S 5 Ave. | Sales: 3310 S. Ave 8E, Suite #1 Yuma, AZ 85365 | Tel: 928-329-9000 | Fax: 928-314-9980
www. JacobsonHomesYuma.com

