



CIELO VERDE PHASE 3

by **Jacobson Homes**

2229

Livable Area:

2229 Sq. Ft.

Footprint:

3 Bedrooms

2 3/4 Bath

Teen Room

Tandem Garage

Options:

3 Car Garage

Formal Living Room

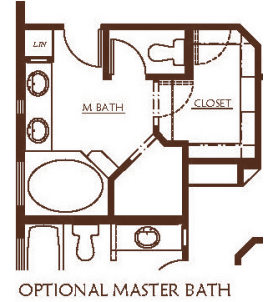
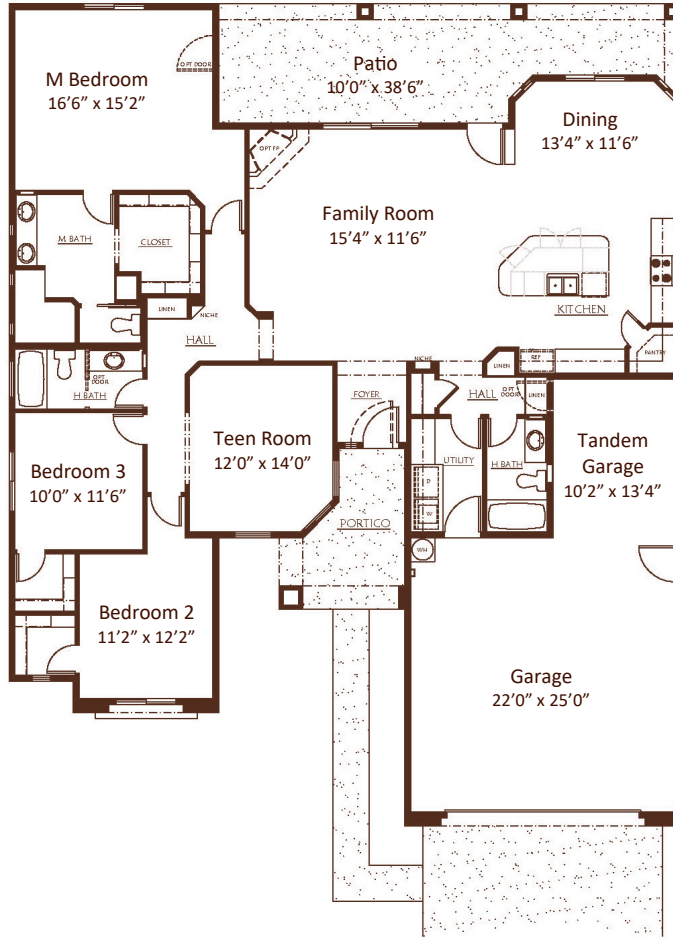
Master Bathroom Garden Tub

Master Bedroom Patio Door

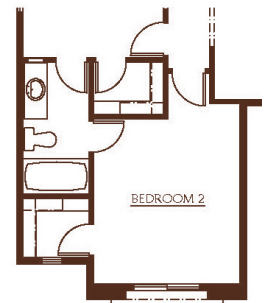
Up to 4 or 5 Bedrooms

Jack & Jill Bathroom

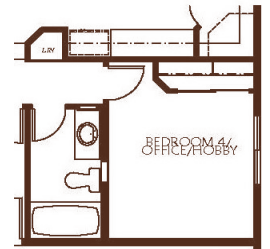
Fireplace



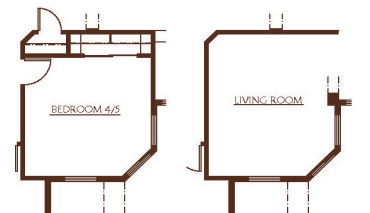
OPTIONAL MASTER BATH



OPTIONAL JACK & JILL BATHROOM



(In lieu of Tandem)
OPTIONAL BEDROOM 4/5
(with opt. 4th bedroom/office the square footage increases to 2371)



OPTIONAL BEDROOM 4/5 OPTIONAL LIVING ROOM
(In lieu of Teen Room)



All dimensions and floor areas are approximate. Prices and specifications are subject to change without notice, solely at builder's discretion. Elevation drawings are artistic interpretations of the appearance of the design, which may differ from the actual results when built. Each home to be constructed is subject to terms of approval of a building permit by the City/County of Yuma. Options and additions depicted are not available on all plans or lots.



Main: 1334 S 5 Ave. | Sales: 3310 S. Ave 8E, Suite #1 Yuma, AZ 85365 | Tel: 928-329-9000 | Fax: 928-314-9980
www. JacobsonHomesYuma.com

