



CIELO VERDE PHASE 5

2637



by
Jacobson Homes

Livable Area:

2,637 Sq. Ft.

2,926 Sq. Ft. w/opt. Bedroom

Footprint:

4 Bedrooms

3 bath

3 Car Garage

Options:

Up to 6 Bedrooms

Teen Room

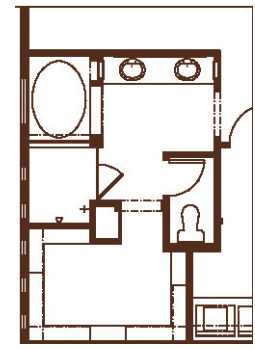
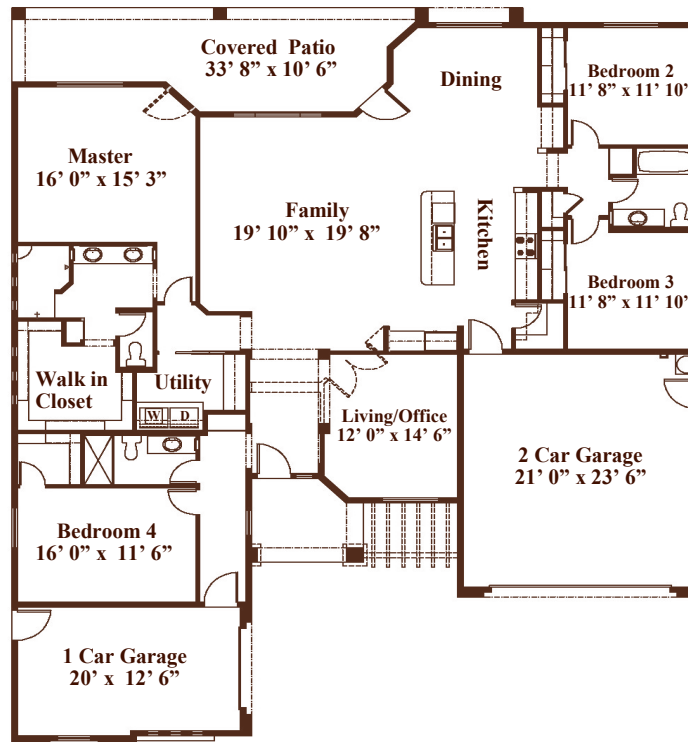
In-law Suite

Game Room

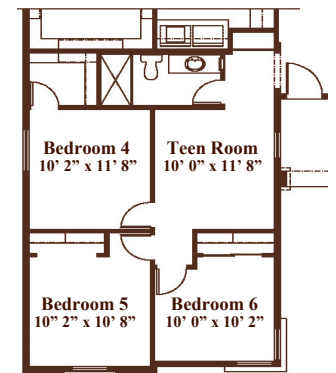
Master Bath Layout

Granite Counters in Bathrooms

Fireplace



OPT. MASTER BATH



OPT. BEDROOM



All dimensions and floor areas are approximate. Prices and specifications are subject to change without notice, solely at builder's discretion. Elevation drawings are artistic interpretations of the appearance of the design, which may differ from the actual results when built. Each home to be constructed is subject to terms of approval of a building permit by the County/City of Yuma. Options and additions depicted are not available on all plans or lots.



Main: 1334 S 5 Ave. | Sales: 3310 S. Ave 8E, Suite #1 Yuma, AZ 85365 | Tel: 928-329-9000 |
www. JacobsonHomesYuma.com

