



COURTYARDS

at CIELO VERDE PHASE 2B

BY  **Jacobson Homes**

1584M

CV2B Lot 38
8318 E. Paraiso Pkwy
\$376,174.00

Livable Area:

1584 Sq. Ft.

Footprint:

Width: Depth:

3 Bedrooms

1 3/4 Bath

2 Car Garage

Standard:

9' Ceilings

Granite counter tops throughout
Tile throughout except bedrooms

Shaker style cabinets
Stainless steel appliances

Double vanity (master)

Tiled walk-in shower

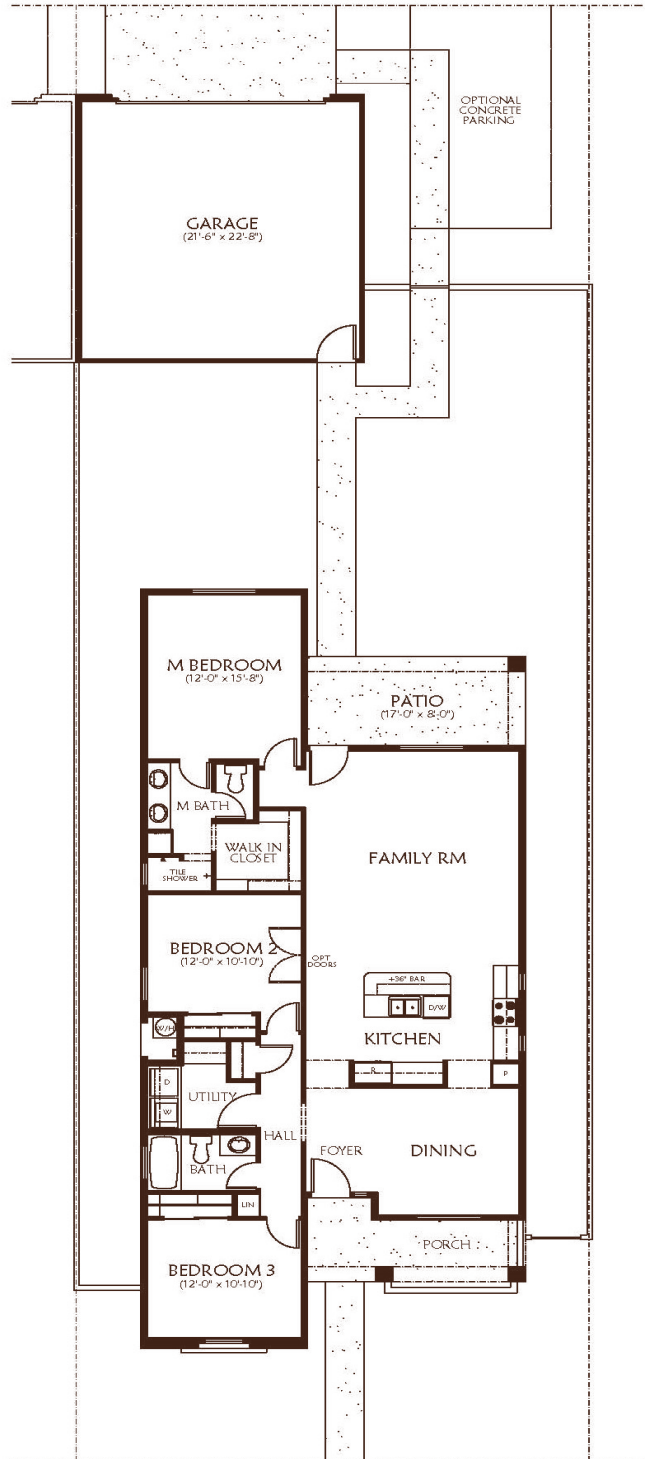
Two 4' gate

Santa Fe Elevation

Upgrade:

Premium lot

10' double gate



All dimensions and floor areas are approximate. Prices and specifications are subject to change without notice, solely at builder's discretion. Elevation drawings are artistic interpretations of the appearance of the design, which may differ from the actual results when built. Each home to be constructed is subject to terms of approval of a building permit by the City of Yuma. Options and additions depicted are not available on all plans or lots.



Main: 1334 S 5 Ave. | Sales: 3310 S. Ave 8E, Suite #1, Yuma, AZ 85365 | Tel: 928-329-9000
www. JacobsonHomesYuma.com

