



# COURTYARDS

at CIELO VERDE PHASE 2B

BY  **Jacobson Homes**

# 1584B

Lot 39

8330 E. Paraiso Pkwy.

\$388,000.00

### Livable Area:

1584 Sq. Ft.

### Footprint:

Width: Depth:

3 Bedrooms

1 3/4 Bath

2 Car Garage

### Standard:

9' Ceilings

Quartz counter tops throughout

Tile throughout except bedrooms

Ceiling fans in living room & bedrooms.

Double vanity (master)

Tiled walk-in shower in master

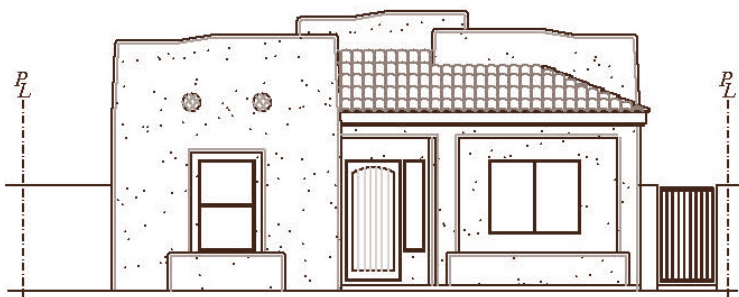
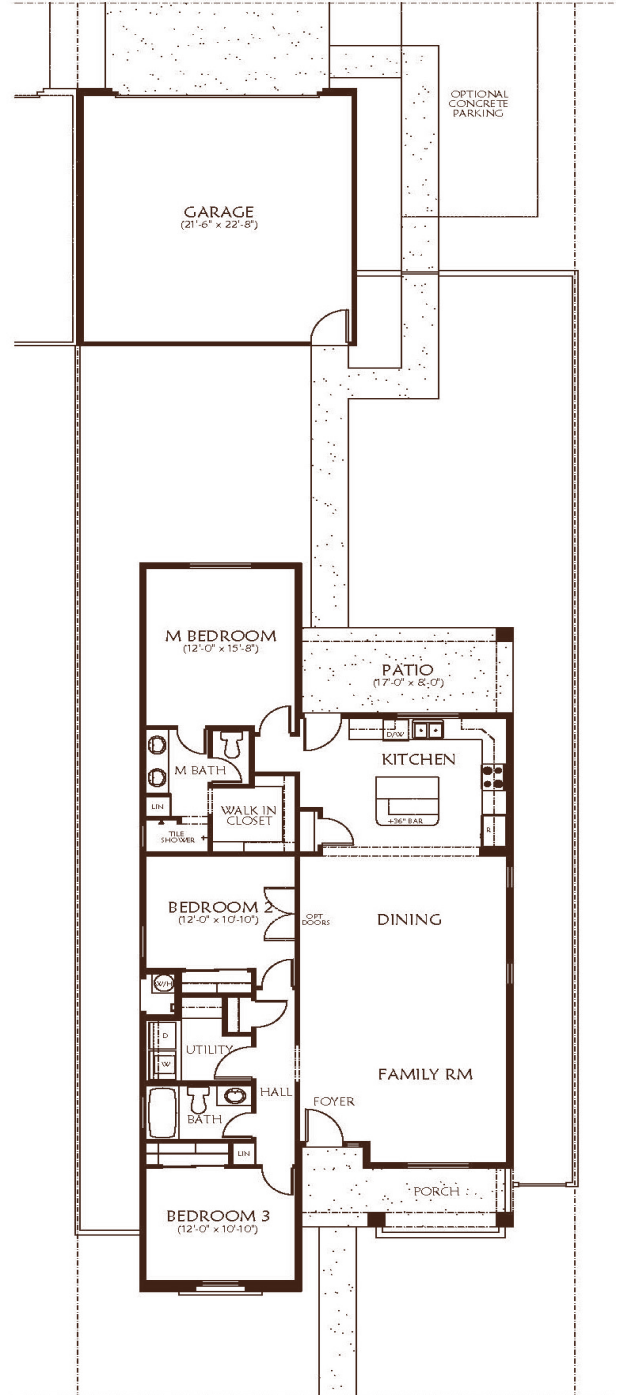
Stainless steel appliance

Santa Fe Elevation

### Upgrades:

10' Double gate in addition to single gate

Premium Lot



All dimensions and floor areas are approximate. Prices and specifications are subject to change without notice, solely at builder's discretion. Elevation drawings are artistic interpretations of the appearance of the design, which may differ from the actual results when built. Each home to be constructed is subject to terms of approval of a building permit by the City of Yuma. Options and additions depicted are not available on all plans or lots.



Main: 1334 S 5 Ave. | Sales: 3310 S. Ave 8E, Suite #1, Yuma, AZ 85365 | Tel: 928-329-9000

[www.JacobsonHomesYuma.com](http://www.JacobsonHomesYuma.com)



Last Updated 6/4/24