



COURTYARDS

at CIELO VERDE PHASE 2B

BY  **Jacobson Homes**

1802

CV2B Lot 40
8342 E. Paraiso Pkwy
\$407,560.00

Livable Area:

1802 Sq. Ft.

Footprint:

Width: Depth:

3 Bedrooms

Office

1 3/4 Bath

2 Car Garage

Standard:

9' Ceilings

Tile throughout except for bedrooms

Ceiling fans in living room and bedrooms

Granite counter tops throughout

Double vanity (master)

Tiled walk-in shower

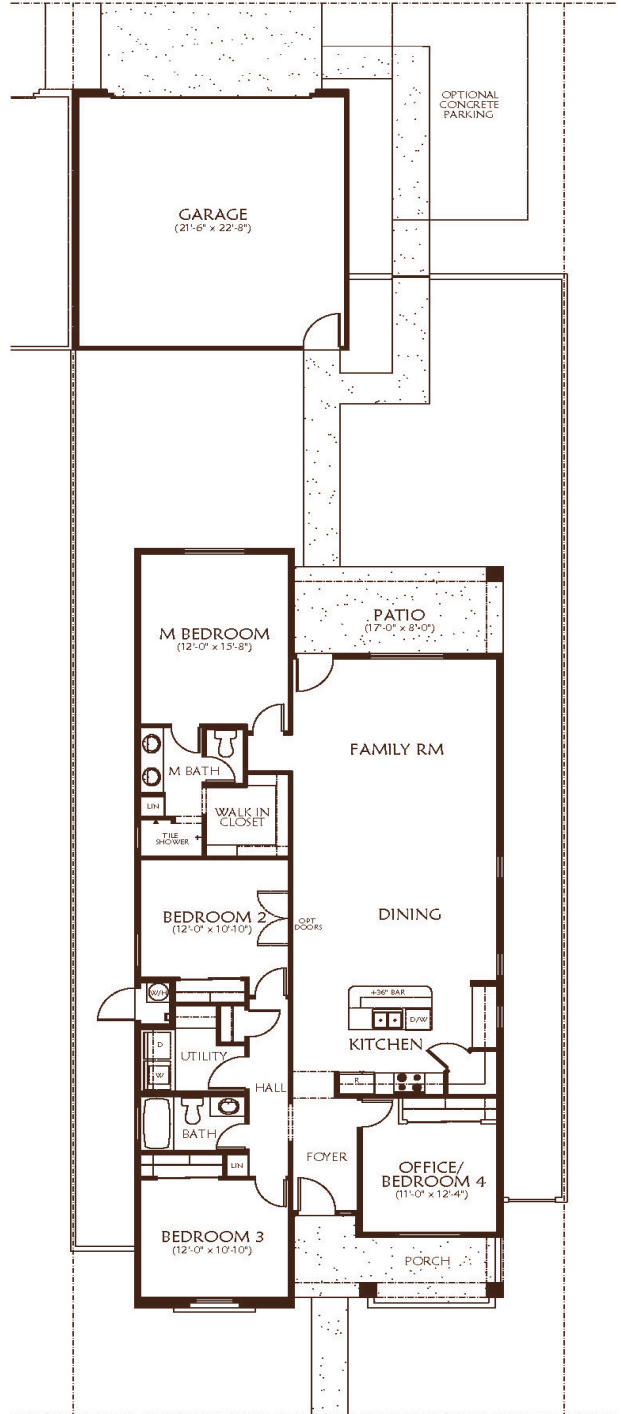
Stainless steel appliances

Santa Fe Elevation

Upgrade:

10' double gate in addition to the single gate

Corner Lot



All dimensions and floor areas are approximate. Prices and specifications are subject to change without notice, solely at builder's discretion. Elevation drawings are artistic interpretations of the appearance of the design, which may differ from the actual results when built. Each home to be constructed is subject to terms of approval of a building permit by the City of Yuma. Options and additions depicted are not available on all plans or lots.



Main: 1334 S 5 Ave. | Sales: 3310 S. Ave 8E, Suite #1, Yuma, AZ 85365 | Tel: 928-329-9000
www. JacobsonHomesYuma.com

