



# COURTYARDS

## at CIELO VERDE PHASE 2B

BY  **Jacobson Homes**

# 1584B

### Livable Area:

1584 Sq. Ft.

### Footprint:

Width: 30' Depth: 68'

3 Bedrooms

1 3/4 Bath

2 Car Garage

### Standard:

9' Ceilings

Granite or Quartz counter tops throughout

Tile throughout except bedrooms

Double vanity (master)

Tiled walk-in shower (master)

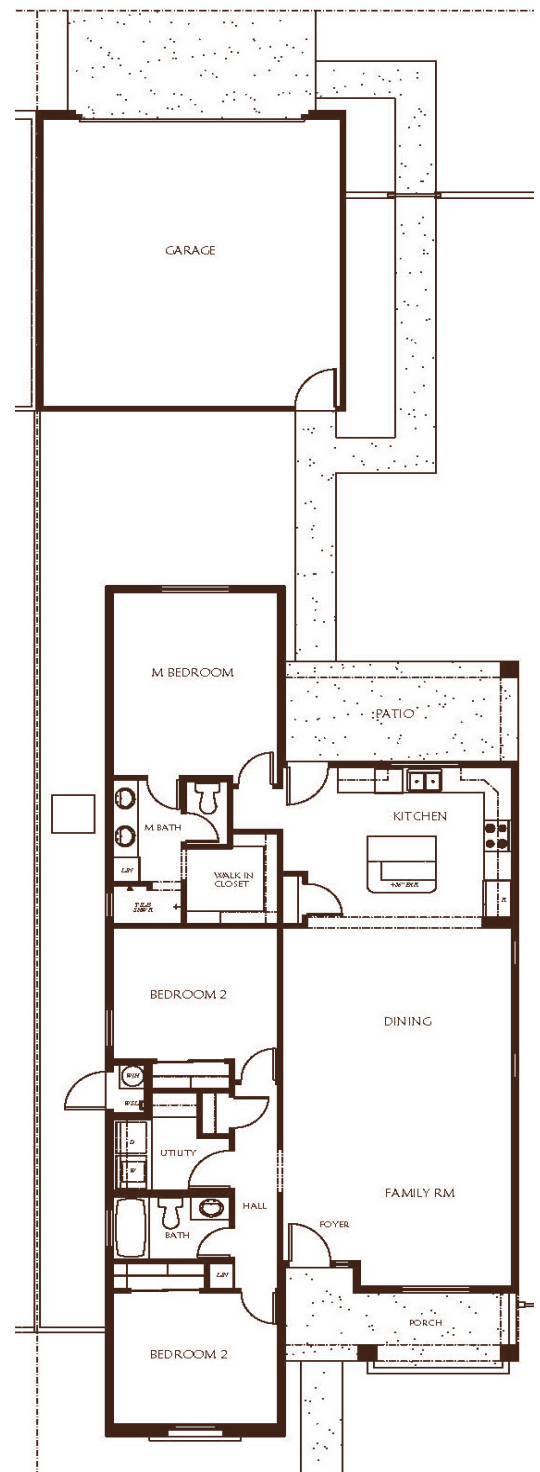
(2) single 4' gates & (1) 12' double gate

### Only Structural Options Available:

Bedroom #2 Den option

(closet removal is not an option)

Optional concrete parking



All dimensions and floor areas are approximate. Prices and specifications are subject to change without notice, solely at builder's discretion. Elevation drawings are artistic interpretations of the appearance of the design, which may differ from the actual results when built. Each home to be constructed is subject to terms of approval of a building permit by the City of Yuma. Options and additions depicted are not available on all plans or lots.



Main: 1334 S 5 Ave. | Sales: 3310 S. Ave 8E, Suite #1, Yuma, AZ 85365 | Tel: 928-329-9000  
[www.JacobsonHomesYuma.com](http://www.JacobsonHomesYuma.com)



Last Updated 2/25/25