



COURTYARDS

at CIELO VERDE PHASE 2B

1802

BY  **Jacobson Homes**

Livable Area:

1802 Sq. Ft.

Footprint:

Width:30' Depth:70'

4 Bedrooms

1 3/4 Bath

2 Car Garage

Standard:

9' Ceilings

Tile throughout except for bedrooms

Granite or Quartz counter tops throughout

Double vanity (master)

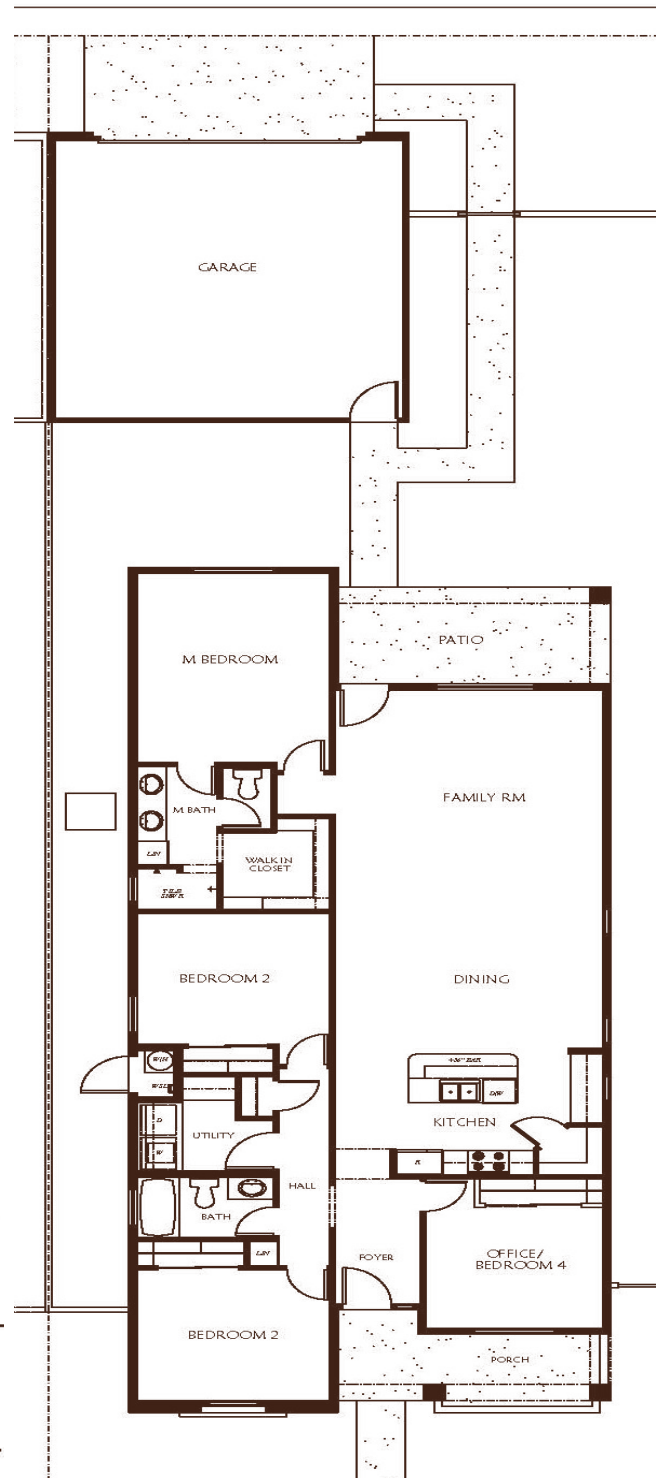
Tiled walk-in shower (master)

(2) 4' single gates & (1) 12' double gate

Only structural options available:

Den/Office/Sitting Room
with bedrooms 2 or 4 (closet stays)

Optional concrete parking



All dimensions and floor areas are approximate. Prices and specifications are subject to change without notice, solely at builder's discretion. Elevation drawings are artistic interpretations of the appearance of the design, which may differ from the actual results when built. Each home to be constructed is subject to terms of approval of a building permit by the City of Yuma. Options and additions depicted are not available on all plans or lots.



Main: 1334 S 5 Ave. | Sales: 3310 S. Ave 8E, Suite #1, Yuma, AZ 85365 | Tel: 928-329-9000
www.JacobsonHomesYuma.com



Last Updated 2/25/25