



# CIELO VERDE PHASE 4



by  
**Jacobson Homes**

# 1727

## Livable Area:

1727 Sq. Ft.

## Footprint:

4 Bedrooms

1 3/4 Bath

2 Car Garage/side entry

## Standards:

9' Ceilings

Granite/Quartz Counter Tops

Shaker style Cabinets

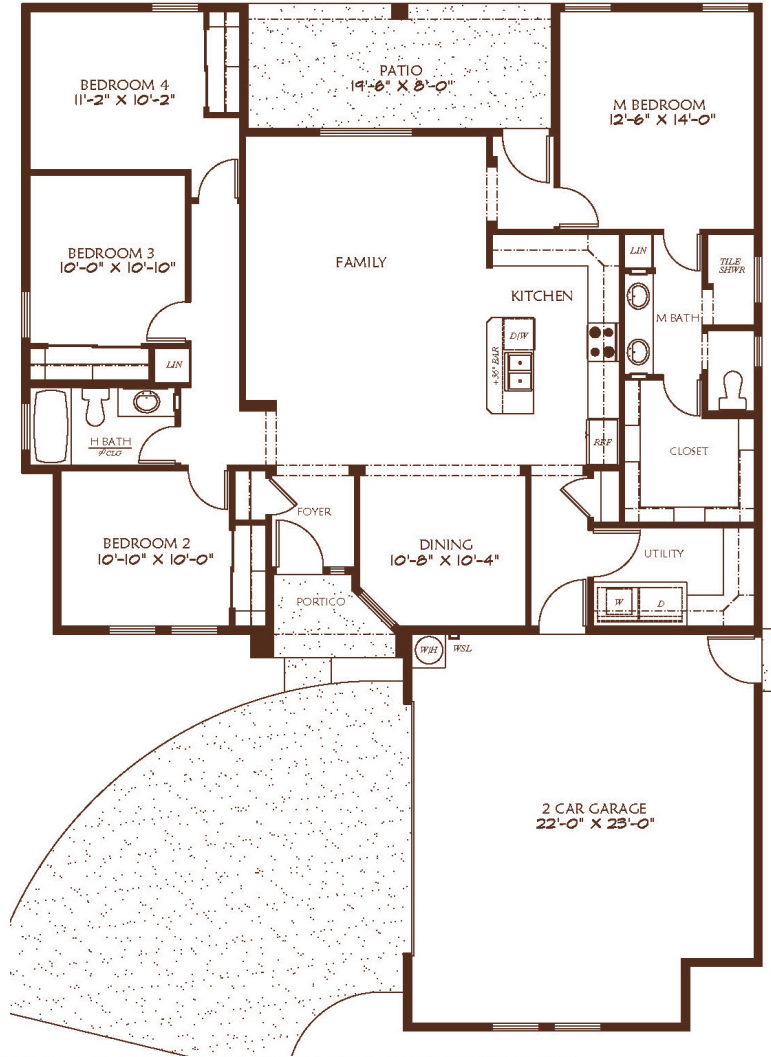
Stainless steel appliances (gas range)

Tiled Flooring throughout except  
bedrooms

Tiled Walk-in Shower with double  
vanities in Master bathroom

Covered Patio Under Truss

12' double gate on garage side  
(no single gate)



W-47'-6"

D- 66'-0"

All dimensions and floor areas are approximate. Prices and specifications are subject to change without notice, solely at builder's discretion. Elevation drawings are artistic interpretations of the appearance of the design, which may differ from the actual results when built. Each home to be constructed is subject to terms of approval of a building permit by the City of Yuma. Options and additions depicted are not available on all plans or lots.



Main: 1334 S 5 Ave. | Sales: 3310 S. Ave 8E., Yuma, AZ 85365 | Tel: 928-329-9000 |  
[www.JacobsonHomesYuma.com](http://www.JacobsonHomesYuma.com)



Last Updated 07/28/25