



CIELO VERDE PHASE 6

1475

by **Jacobson Homes**

Livable Area:

1475 Sq. Ft.

Footprint:

3 Bedrooms

1 3/4 Bath

2 Car Garage

Standards:

9' Ceilings

Granite Counter Tops

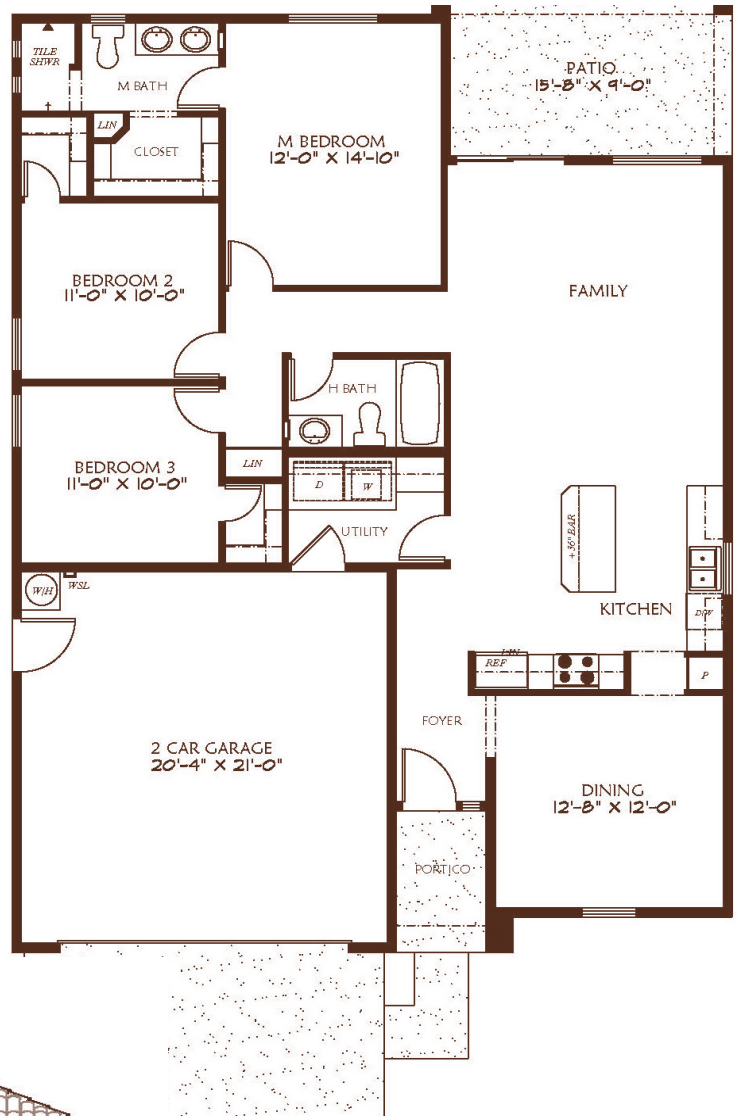
Shaker style cabinets

Tiled flooring throughout

except bedrooms

Tiled walk-in Shower in Master

Covered Patio Under Truss



All dimensions and floor areas are approximate. Prices and specifications are subject to change without notice, solely at builder's discretion. Elevation drawings are artistic interpretations of the appearance of the design, which may differ from the actual results when built. Each home to be constructed is subject to terms of approval of a building permit by the City/County of Yuma. Options and additions depicted are not available on all plans or lots.



Main: 1334 S 5 Ave. | Sales: 3310 S. Ave 8E, Suite #1 Yuma, AZ 85365 | Tel: 928-329-9000 | [www. JacobsonHomesYuma.com](http://www.JacobsonHomesYuma.com)

